



IMAGES OF THE  
**HAWKE'S BAY RUGBY  
UNION  
REPRESENTATIVES**

REPRODUCED FROM THE PHOTOGRAPH  
SUPPLEMENTS OF THE

***AUCKLAND WEEKLY  
NEWS***

**FROM 1900 TO WORLD WAR TWO**

Reproduced courtesy Auckland District Library,  
through its Sir George Grey Memorial collection.  
Provided from the Ewan McGregor Image Collection.



HAWKE'S BAY REPRESENTATIVES 1901



AWNS-19050817-3-4.

**HAWKE'S BAY REPRESENTATIVES 1905**

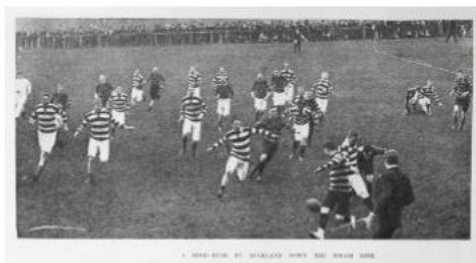
**HAWKE'S BAY V. AUCKLAND, 1905**



AWNS-19050817-3-1

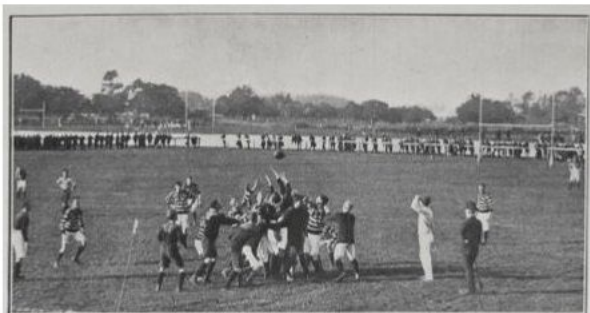
**HAWKE'S BAY V. AUCKLAND, 1905**

A GOOD RUSH BY AUCKLAND DOWN THE TOUCH LINE.



AWNS-19050617-3-2

**HAWKE'S BAY V. AUCKLAND AUGUST 10, 1907: A THROW IN**



HAWKE'S BAY V. AUCKLAND: A THROW IN.

AWNS-19070815-11-2

**HAWKE'S BAY V. AUCKLAND AT ALEXANDRA PARK: A SHOT FOR A GOAL BY THE HOME TEAM**



FOOTBALL, HAWKE'S BAY V. AUCKLAND, AT ALEXANDRA PARK: A SHOT FOR A GOAL BY THE HOME TEAM. AUGUST 11, 1907.

19070815-11-5

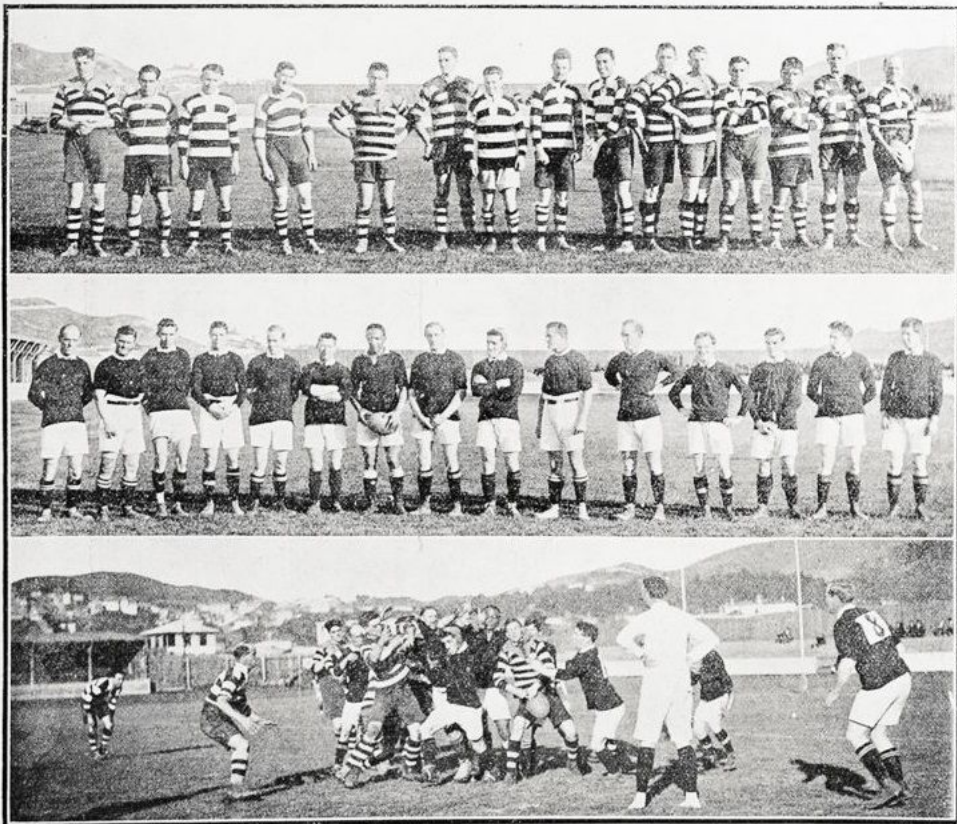
**HAWKE'S BAY V. AUCKLAND 1907: AN EXCITING MOMENT IN THE GAME**



HAWKE'S BAY V. AUCKLAND: AN EXCITING MOMENT IN THE GAME.

AWNS-19070815-11-6

**RANFURLY SHIELD CONTEST: THE RUGBY FOOTBALL MATCH BETWEEN WELLINGTON AND HAWKE'S BAY LAST WEEK. WHICH WAS WON BY THE FORMER BY 20 POINTS TO 5. The top picture shows the Hawke's Bay representatives, the middle is that of the Wellington players, while the bottom views show the match in progress.**



**RANFURLY SHIELD CONTEST: THE RUGBY FOOTBALL MATCH BETWEEN WELLINGTON AND HAWKE'S BAY LAST WEEK. WHICH WAS WON BY THE FORMER BY 20 POINTS TO 5.**

The top picture shows the Hawke's Bay representatives, the middle is that of the Wellington players, while the bottom views show the match in progress

W. H. Saunders, photos.

**SPRINGBOKS VERSUS THE MAORI REPRESENTATIVES AT HASTINGS: A GENERAL VIEW OF THE GAME.**



19210915-34-5.

**THE SPRINGBOKS VERSUS THE COMBINED POVERTY BAY AND HAWKE'S BAY TEAM: SNAPSHOTS OF THE GAME WHICH WAS WON BY THE FORMER BY 14 POINTS TO 8.**



THE SPRINGBOKS VERSUS THE COMBINED POVERTY BAY AND HAWKE'S BAY TEAM: SNAPSHOTS OF THE GAME WHICH WAS WON BY THE FORMER BY 14 POINTS TO 8. The match was played at Napier, and was witnessed by about 4000 persons. The illustrations are: 1. Some of the spectators. 2. A general view of the game. 3. In mid-air; Markes (Springboks) taking the ball, while Mafiki (Maori) possibly is expecting a pass. 4. Maori girls greet the Springboks with a pot dance. P. C. Borell, photos.

AWNS-19210915-41-2



**"GRIM SET FACES" A STUDY IN EXPRESSIONS DURING THE RECENT RANFURLY SHIELD  
FOOTBALL MATCH BETWEEN HAWKE'S BAY AND WELLINGTON AT NAPIER, 1923**

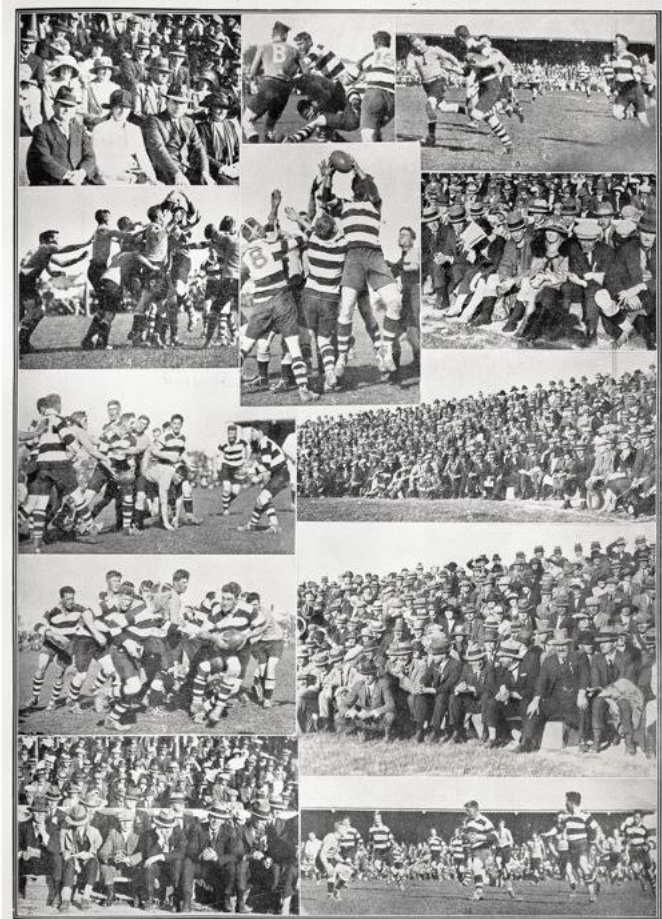


GRIM SET FACES A STUDY IN EXPRESSIONS DURING THE RECENT RANFURLY SHIELD FOOTBALL MATCH BETWEEN HAWKE'S BAY AND WELLINGTON AT NAPIER

L. C. SHAW, 1923.

AWNS-19230809-44-5

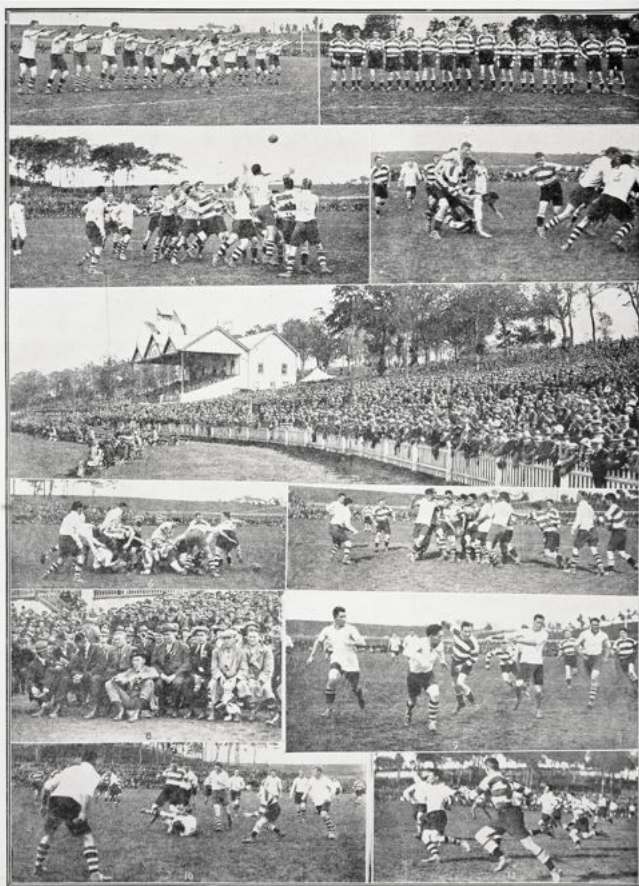
RANFURLY SHIELD RUGBY MATCH AT NAPIER ON SEPTEMBER 22 1923: HAWKE'S BAY  
VICTORIOUS OVER AUCKLAND BY 20 POINTS TO 5.



RANFURLY SHIELD RUGBY MATCH AT NAPIER ON SEPTEMBER 22: HAWKE'S BAY VICTORIOUS OVER AUCKLAND BY 20 POINTS TO 5.

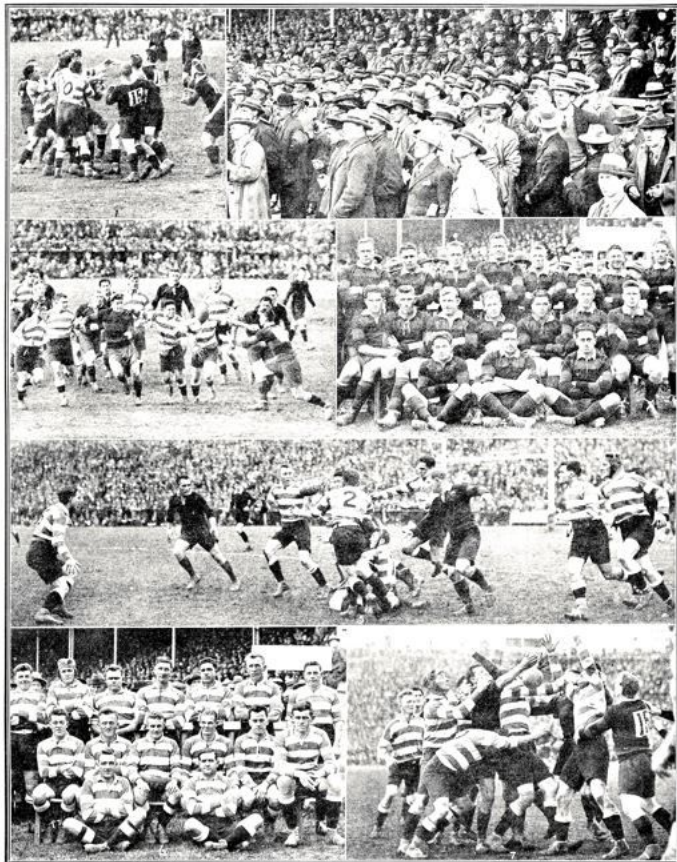


VICTORY FOR AUCKLAND OVER HAWKE'S BAY IN RUGBY UNION MATCH THAT RAISED \$1000  
FOR THE WAR MEMORIAL MUSEUM ON SATURDAY LAST, 1923



VICTORY FOR AUCKLAND OVER HAWKE'S BAY IN RUGBY UNION MATCH THAT RAISED \$1000 FOR THE WAR MEMORIAL MUSEUM ON SATURDAY LAST.

RUGBY UNION FOOTBALL MATCH OF THE SEASON: AUCKLAND AND HAWKE'S BAY DRAW,  
1925



RUGBY UNION FOOTBALL MATCH OF THE SEASON: AUCKLAND AND HAWKE'S BAY DRAW.

In a hard and thrilling match, featuring one of the great scrums between the two sides of New Zealand, the Hawke's Bay and Auckland Rugby Union players played a great game at Eden Park. On the right, the work being done in a scrum with the referee watching.

- A scrum for possession during the forward play.
- A large crowd of spectators.
- A scrum with the referee watching.
- A scrum with the referee watching.
- A scrum with the referee watching.
- A scrum with the referee watching.
- A scrum with the referee watching.

1926

FAMOUS ALL BLACK FOOTBALLER'S ROMANCE.



FAMOUS ALL BLACK FOOTBALLER'S ROMANCE.

AWNS-19260810-50-2



NEW ZEALAND'S PREMIER RUGBY UNION FOOTBALLERS, THE HAWKES BAY REPRESENTATIVES.

Left to right: M. Brewster (captain), C. Bouverie, Singh, Connolly, Walker, Makarua, Swain, Preece, Neve, Irvine, Kaitiaki, Cooke, Blake, Mill, Johnson. In debating the Hawke's Bay against Wellington, they have defeated the "challengers" by 36 points to 6, and a week later defeated Auckland by 41 to 11. In the Auckland match James captured Preece.

-R. C. Smith.

ABOVE: 1926

**PREMIERSHIP OF NEW ZEALAND RUGBY UNION FOOTBALL WRESTED FROM HAWKE'S BAY  
BY THE WAIRARAPA REPRESENTATIVES, 1927**



PREMIERSHIP OF NEW ZEALAND RUGBY UNION FOOTBALL WRESTED FROM HAWKE'S BAY BY THE WAIRARAPA REPRESENTATIVES

An incident of the match for the Ranfurly Shield, which Wairarapa won by 13 points to 51 at Napier on June 8. The picture shows starting one of their scoring phases which ended in a try. Hawke's Bay had been the holders of the shield since 1925.

—Landslide.

AWNS-19270809-47-2

**HAWKE'S BAY DEFEATED AT LAST: FURTHER SNAPSHOTS OF THE MATCH WHICH GAVE  
WAIRARAPA THE RANFURLY SHIELD**



HAWKE'S BAY DEFEATED AT LAST: FURTHER SNAPSHOTS OF THE MATCH WHICH GAVE WAIRARAPA THE RANFURLY SHIELD.

In the left photo, Hawke's Bay, is seen wringing a tackle. Right: A. E. Cooke clears for Wairarapa in characteristic style.

—Landslide.

AWNS-19270809-47-3

**HAWKE'S BAY MEN LEAD NEW ZEALAND ON THE PLAYING FIELD, 1927**



HAWKE'S BAY MEN LEAD NEW ZEALAND ON THE PLAYING FIELD.  
Messrs. T. C. Lowry (left) and M. Brownlie photographed together last week.  
Mr. Lowry is New Zealand's cricket captain and Mr. Brownlie is leader of the  
"All Blacks."  
—Deighton.



OLD RIVALRY MEET IN THE FIRST BIG RUGBY MATCH OF THE SEASON IN NEW ZEALAND.



OLD RIVALRY MEET IN THE FIRST BIG RUGBY MATCH OF THE SEASON IN NEW ZEALAND.

Members cheer the game on Waikanae Park, Dunedin, on June 4, when Waikanae defeated Dunedin 10 to 0 after a thrilling contest. The result of the game was decided with interest by many of the spectators who were present.

1. The Waikanae players, led by A. Brown.
2. Only the Waikanae players, led by A. Brown.
3. A player from Dunedin being held in a scrum by Waikanae players.
4. Dunedin players being tackled by Waikanae players.
5. A player from Dunedin being held in a scrum by Waikanae players.
6. The Dunedin players.

—H.E. Photographs.

**HAWKE'S BAY, ONE OF THE GREATEST STRONGHOLDS OF RUGBY FOOTBALL IN  
NEW ZEALAND**

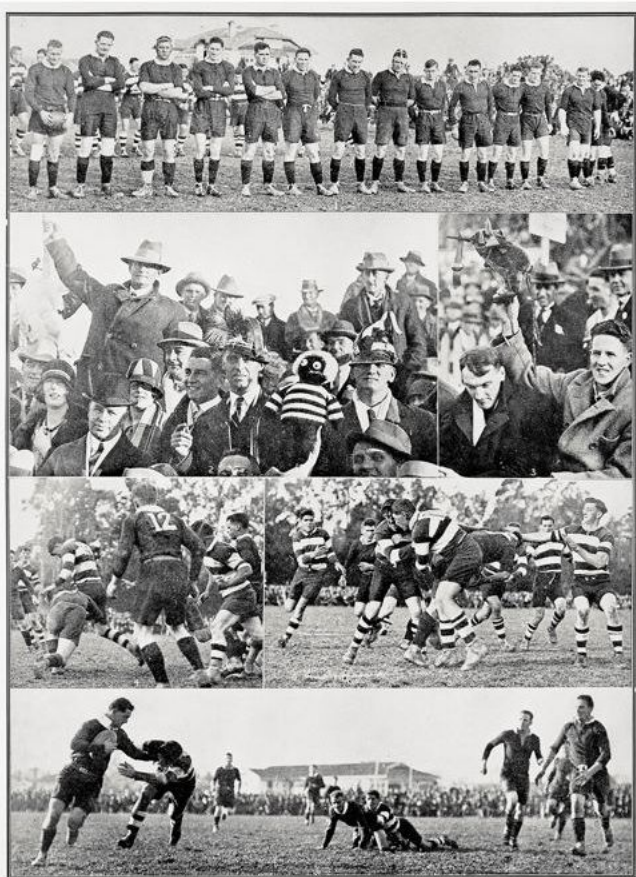
**McLean Park, Queen's Birthday match v Wairarapa featured above**



ONE OF THE GREATEST STRONGHOLDS OF RUGBY FOOTBALL IN NEW ZEALAND.

AWNS-19280614-46-8

PROVINCIAL RUGBY SUPREMACY IN NEW ZEALAND: FIRST CHALLENGE OF THE 1929 SEASON  
FOR THE COVETED RANFURLY SHIELD.



PROVINCIAL RUGBY SUPREMACY IN NEW ZEALAND: FIRST CHALLENGE OF THE SEASON FOR THE COVETED RANFURLY SHIELD.

The Waikato Rugby Association appreciably defeated the Hawke's Bay side against the Hawke's Bay's excellent last season's champion of Marlborough, the game was hot, close, and fairly contested, the final score being 20 points to 6 in Waikato's favor.

1. The victorious Waikato team lined up on the field.

2. The crowd of spectators on the right side.

3. Hawke's Bay player attempting to tackle.

4. Hawke's Bay player in attack.

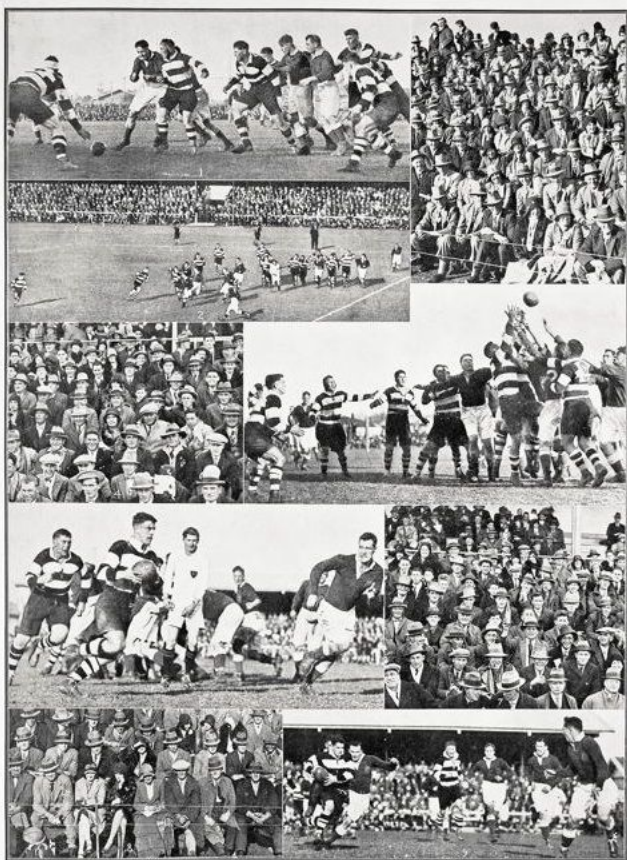
5. Hawke's Bay player running with the ball, being tackled by the Waikato player.

6. Waikato player running with the ball, being tackled by the Hawke's Bay player.

7. Waikato player running with the ball, being tackled by the Hawke's Bay player.

8. Hawke's Bay player in attack.

THE BRITISH RUGBY FOOTBALL TOUR: HAWKE'S BAY DEFEATED LAST SATURDAY AFTER A GALLANT FIGHT.



THE BRITISH RUGBY FOOTBALL TOUR: HAWKE'S BAY DEFEATED LAST SATURDAY AFTER A GALLANT FIGHT.

Please before a record attendance for the district of 12,000 people, but Hawke's Bay's success at McLean Park, Napier, produced a thrilling struggle in which the Hawke's Bay forwards were successful. British record a victory but only in the last few minutes of the game, winning by 10 points to 6.

5. Overright, the Hawke's Bay, wins the scrum, commencing to kick on the full team.  
 6. A general view of game. W. Borealis, the famous "All Black" captain, has the 3 and 4. Among the record gathering of spectators on the side line.

1. Forwards, looking for opportunity of the ball in one of the line-outs.  
 2. In London, Hawke's Bay half-back, holding steady the side of the scrum.  
 3. A full of Hawke's Bay spectators during the scrum.  
 4. A scrum, Hawke's Bay last making a successful effort to gain the height of 4. 5. Borealis, the British team-captain.

**BIG RUGBY IN EARTHQUAKE-STRICKEN NAPIER: AUCKLAND SOUNDLY BEATEN BY THE CLEVER HAWKE'S BAY REPRESENTATIVES, 1931**



**BIG RUGBY IN EARTHQUAKE-STRICKEN NAPIER; AUCKLAND SOUNDLY BEATEN BY THE CLEVER HAWKE'S BAY REPRESENTATIVES.**

In a game confined mainly to the forwards, but with occasional flashes of swift ball-line back play, the Hawke's Bay Rugby representative defeated Auckland at McLean Park last Saturday by 10 points to 4 in an earthquake-stricken Napier. The attendance was between 300 and 400. The ground was very heavily littered on top and both drains running from the north-western corner, which was just in the last week, did not give sufficient notice for the players. Nevertheless, the tackle landed the ball with considerable violence, and in various positions it was very well controlled. The whole play, great above all, of Auckland, winning the ball from a scrum. On the left of St. Crispin, the distinctive Auckland ball-line, it's about no contrasting area. —Edw. Thompson.

**HAWKE'S BAY DEFEATED BY AUCKLAND'S REPRESENTATIVES AFTER A BRIGHT EXHIBITION  
OF RUGBY AT EDEN PARK, AUCKLAND LAST SATURDAY, 1931**



HAWKE'S BAY DEFEATED BY AUCKLAND'S REPRESENTATIVES AFTER A BRIGHT EXHIBITION OF RUGBY AT EDEN PARK, AUCKLAND, LAST SATURDAY.  
 Here, the Auckland halfback (in knee) has down on the ball in order to stop a strong Hawke's Bay forward rush. The visiting players are distinguished by the broad bands on their jerseys. Over 10,000 spectators saw the match which resulted in victory for the local team by 22 points to 14. Hawke's Bay had previously defeated Auckland this season by 14 to 6. —Staff Photographer

AWNS-19310826-50-3

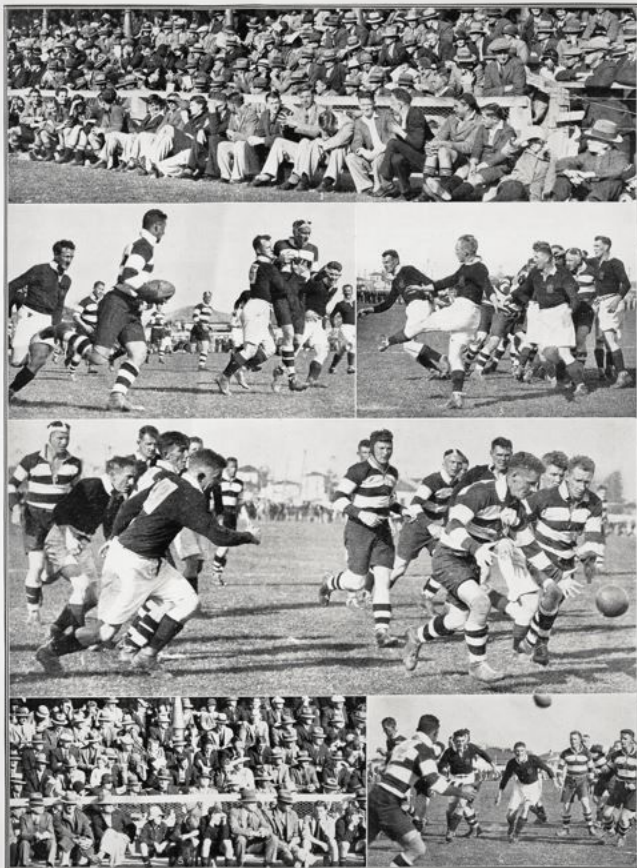
**BRIGHT INTER-PROVINCIAL RUGBY FOOTBALL MATCH IN AUCKLAND: VISITING HAWKE'S BAY  
TEAM NARROWLY DEFEATED**



BRIGHT INTER-PROVINCIAL RUGBY FOOTBALL MATCH IN AUCKLAND: VISITING HAWKE'S BAY TEAM NARROWLY DEFEATED  
 Here, the Auckland forward, breaking away from a scrum to start an attack during last Saturday's match against Hawke's Bay at Eden Park, Auckland. R. Wainwright, Auckland captain, is in the center background. The home team won an interesting match by 21 points to 20. —Staff Photographer

AWNS-19330823-35-1

HAWKE'S BAY'S GREAT RUGBY FOOTBALL VICTORY: THE WELLINGTON REPRESENTATIVES DEFEATED IN NAPIER, 1933



HAWKE'S BAY'S GREAT RUGBY FOOTBALL VICTORY: THE WELLINGTON REPRESENTATIVES DEFEATED IN NAPIER

Photo: Radio program of 1933. Caption: The Hawke's Bay Rugby Representative team, Wellington, in an exciting game at Wellington Park, Napier, New Zealand. At one moment the scene stood at 30-0. Wellington scored first, but the Hawke's Bay players were inspired. Their valiant and able team, from 100 spectators, came up to meet the Wellington team with a slight breeze, and there was a good indication of a reversal of their fortunes in the Wellington game.

1. One of the spectators.

2. G. Hogg, the Hawke's Bay wing/interceptor, when a pass from a forward who

3. Ellis, the Wellington fullback and captain, gets in a clearing kick.

4. Another Hawke's Bay forward, combining over in a loose end.

5. Another view of the stand.

6. Smith (left) about to receive a pass.

—Ed. Photomaster





TOURING AUSTRALIAN RUGBY TEAM BEATEN AT NAPIER: SUCCESS OF HAWKE'S BAY, 1936



TOURING AUSTRALIAN RUGBY TEAM BEATEN AT NAPIER: SUCCESS OF HAWKE'S BAY ON SATURDAY

REPRESENTATIVE RUGBY AT NAPIER: VISITING AUCKLAND TEAM DEFEATED BY HAWKE'S BAY IN A FAST GAME



REPRESENTATIVE RUGBY AT NAPIER: VISITING AUCKLAND TEAM DEFEATED BY HAWKE'S BAY IN A FAST GAME  
.AWNS-19380923-50-2

HAWKE'S BAY V. SOUTH AFRICA, 1937



Upper left: Williams scoring South Africa's first try. Upper right: Williams fails to intercept as Babrow tackles a Hawke's Bay player. In the centre is Hofmeyr. Lower: Du Toit fending off a defender as he broke away in movement which led to another try the visitors.

**A section of the crowd: The match was witnessed by a record gathering of 16,000.**



AWNS-19370922-56-2

**Johnson having a shot at goal for Hawke's Bay.**



AWNS-19370922-56-3

**Loose Play among the forwards: Lotz and Jackson are breaking away from the ruck as Dalton stoops to gather in the ball.**



Loose play among the forwards: Lotz and Jackson are breaking away from the ruck as Dalton stoops to gather in the ball.

AWNS-19370922-56-4

**Excitement and enjoyment evident among some of the Maori spectators.**



Excitement and enjoyment evident among some of the Maori spectators.

AWNS-19370922-56-5

**AUCKLAND'S TOURING RUGBY REPRESENTATIVES SUFFER HEAVY DEFEAT AT THE HANDS OF HAWKE'S BAY: LAST SATURDAY'S MATCH AT NAPIER, 1938**



AWNS-19380921-55-3