

Chambers Estate

Hawke's Bays Ultimate Life Style Subdivision





For the first time this land, part of the Chambers family estate since 1852, is available for purchase as a lifestyle development.

With breathtaking panoramic views of Hawke's Bay, the 24 prestigious building sites offer peace and tranquillity with the convenience of being so close to the Village.

This prestigious development has been designed so that the beauty and idyllic environment has been retained. This is a once in a lifetime opportunity to purchase a lifestyle property in this unsurpassed location.



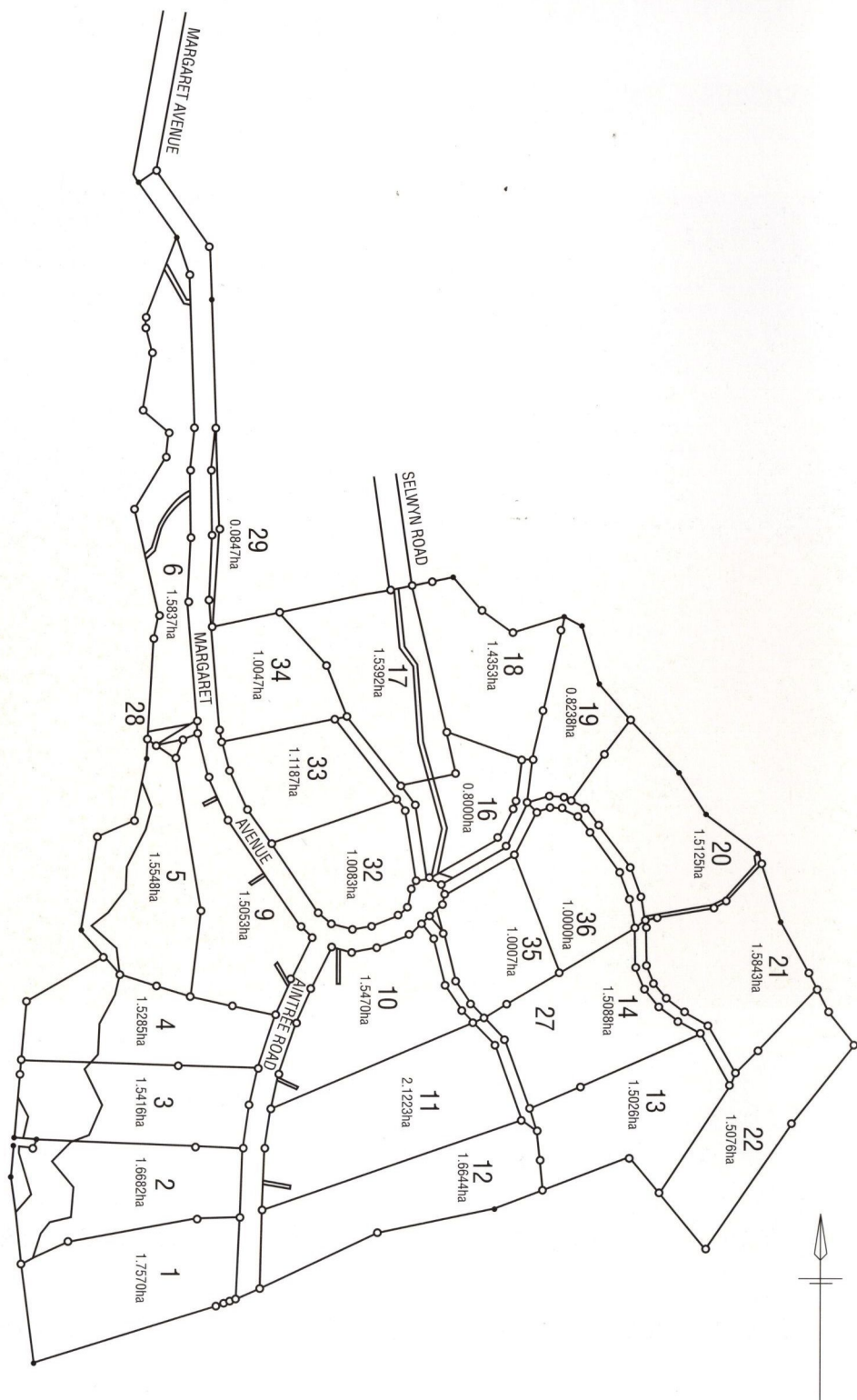
Set at the extension of Margaret Avenue, Havelock North approximately four minutes from Havelock North Village. This new subdivision offers a lifestyle opportunity unrivalled in Hawke's Bay.

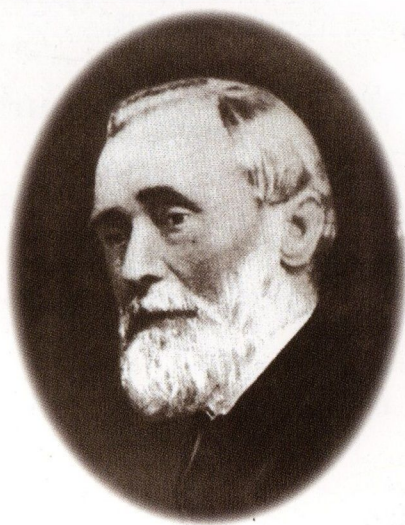
Sites for sale are available from 0.8 to 2.1 hectares ($2\frac{1}{2}$ - 5 acres), and are fully fenced with power and water to all sites and town sewerage to eighteen of the twenty four sites.

Part of Hawke's Bays history is now available to you, please feel free to view at anytime.

Chambers Estate

Hawke's Bays Ultimate Life Style Subdivision





John Chambers (1819 - 1893) of Te Mata, Havelock North. John and his wife Margaret were the founders of one of Hawkes Bay's most distinguished farming families. Amongst the Chambers family's many benefactions was the gifting of Te Mata Park to the people of Hawke's Bay.

We feel confident that John & Margaret Chambers would have approved of this development.

For more information on this superb development opportunity please contact



Alison Small

Direct Line (06) 873 5920

Fax (06) 873 5902

A/H (06)

Mobile



The Professionals

Tremain Real Estate Ltd