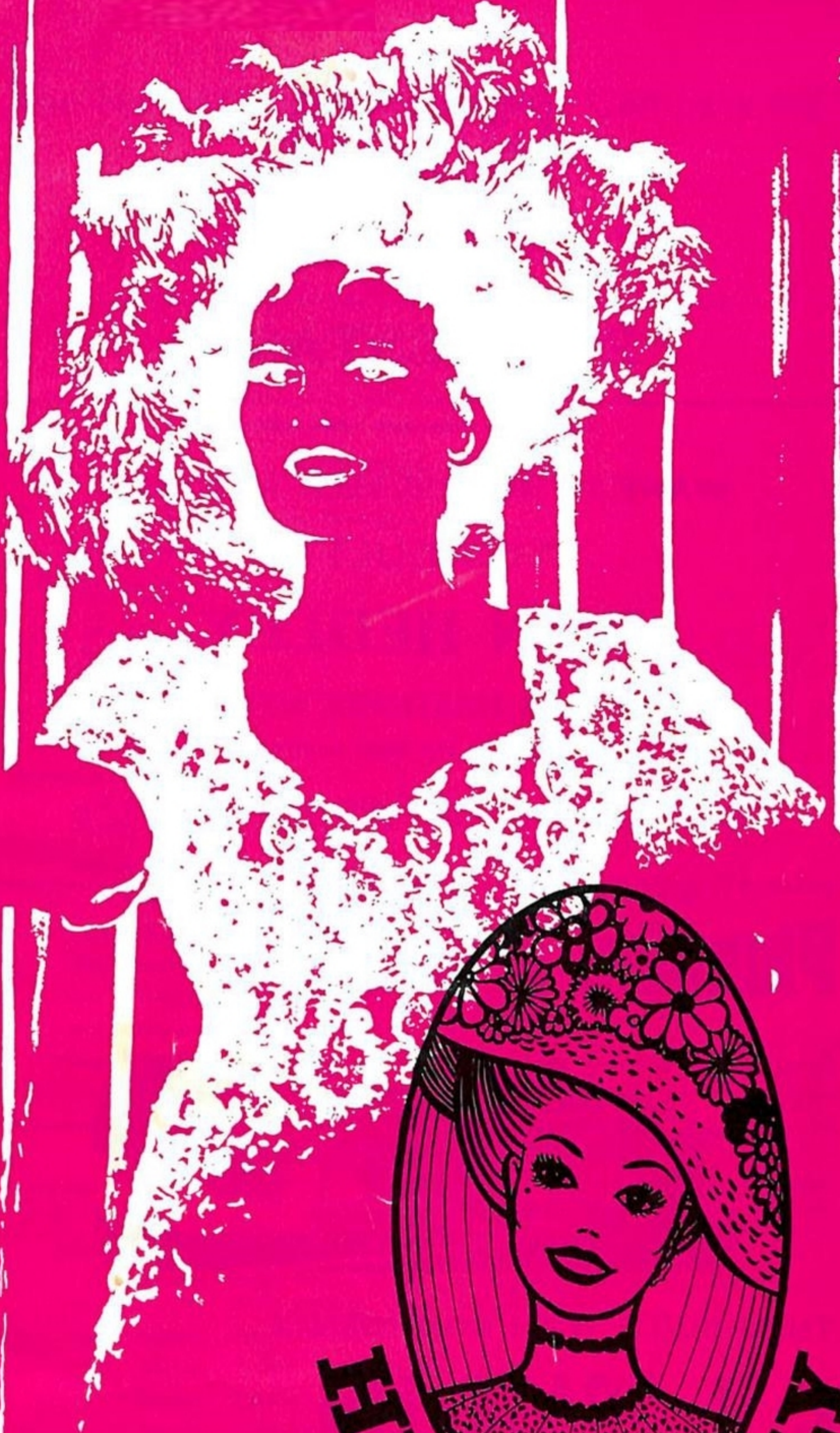


20c



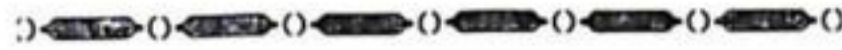
HASTINGS MUSICAL COMEDY COMPANY

21st PRODUCTION 1971



M.R.E.I.N.Z.

REAL ESTATE



WANT TO BUY OR SELL A HOUSE?

CONSULT

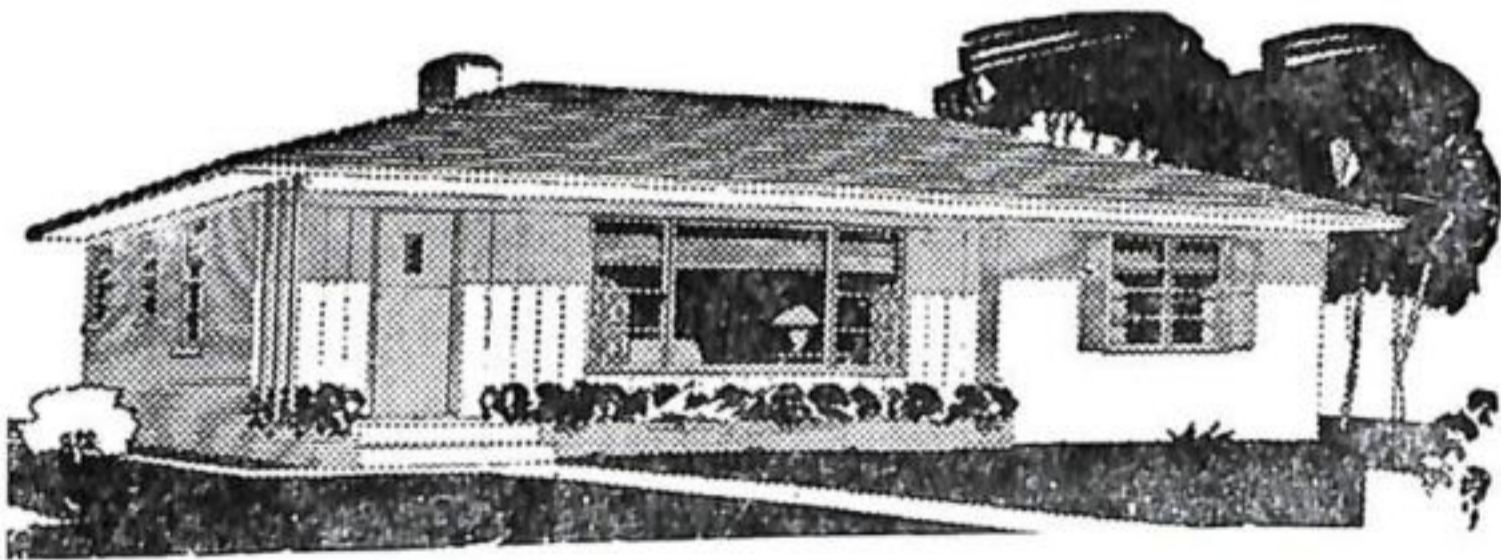
IVAN HEDLEY

AT OUR HASTINGS OFFICE

(Phone 82-219 after hours)

We Guarantee Prompt Service

Planning to Build?



THEN BUILD WITH CONFIDENCE

C. J. TRASK LTD.

BUILDING CONTRACTORS

HAWKE'S BAY LOCKWOOD AGENTS



REGISTERED MASTER BUILDER

Phone 86-431 Hastings, P.O. Box 792
CONSIDER OUR DESIGN, QUOTE
AND BUILD SERVICE.

If you are obtaining tenders
give us the opportunity.

The Hastings Musical Comedy Company Inc.
21st Production 1971

HELLO DOLLY

HASTINGS MUNICIPAL THEATRE, JUNE 24th - JULY 3rd

NAPIER MUNICIPAL THEATRE, July 7th - 10th

PRODUCTION PERSONNEL

Director	Margaret O'Sullivan
Assistant Director	Judith Cater
Musical and Choral Director	Ross Gandar
Choreographer Ballet Mistress Ensemble Principle Routines	Betty Burns
Chorus Mistress Rehearsal Pianist	Mary Bell
Wardrobe Design and Manufacture	Ursula and Ruth Calson
Scenic Design	Keith Brazier
Lighting Design	Cedric Wright
Properties	Jeanne Hall, Bob Buckley, Alistair Forbes, John Graham.
Stage Director	Colin Spence
Stage Manager	Carl Wright
Chief Electrician	John Henderson
Sound Technicians	Alistair Bibby, Murray Thoms
Stage Assistants	Max Harrington, Malcolm Palmer, Trevor Hall, Bryan Petrie, Dick Everarts
Scene Painting	Keith Brazier, Ross McKee (Spurdle & Moran) and members of Company
Scenery Construction	Carl Wright, Colin Spence, Max Harrington, Keith Cooze, Bryan Petrie, Dick Everarts, Harry Barr, Bob Murray
Make-Up	Particia O'Leary, Susan Astwood, Karen Beadle, Ailsa Bousfield, Sheryl Fiddler, Grace Hunt, Jill Hui, Marion Jones, Helen Kale, Debbie Lucas, Robyn O'Leary, Vivienne Osborne, Barbara Plank, Christine Wall, Diane Whitworth
Dressers	Peggy Brazier, Jill Birch, Doreen Hamilton, Rita Howard, Frances Murray, Zelda McCarthy, Thelma Harrington, Kerrie Page
House Manager	George Mitchell
Cashier	Alannah Tomlinson
Librarian	Patricia O'Leary
Prompts	Anne Howard, Marie Evans
Call Stewards	Ron Andrews, Aden Hui
Publicity & Advertising	Jim McCarthy, Keith Brazier, Murray Dale, Gooch Parahi, Richard Edmonds, George Mitchell
Programme	Christine Andersen, Gooch Parahi, Keith Brazier
Front of House Staff	Jim McCarthy, Ron Parker, Mike Topham, Pam Growcott, Dawn Wright, Betty Timms, Glenda Hawke, Josephine Watson, Brenda Parker, Barbara Harris, Jill Henderson
Programme Sellers	Cathy Cameron, Robyn Jury, Phillipa Brown, Judith Fenton, Pauline Moss, Barbara Caves, Pam Drummond, Margot Broughton, Sharon Cameron, Tricia Boon, Caroline Bennett, Diana Furnace, Sue Curd, Vivienne Rippon, Jeanette Murray

Your Trusted

FISHER & PAYKEL

Dealers

AGNEW'S

and SPECIALISTS IN

HOME Electric HEATING by ROLLS

HASTINGS — NAPIER — PALMERSTON NORTH



"Dolly" on Broadway

There's a saying on Broadway that we'd all be millionaires if we knew what the public wants . . . in fact the public doesn't know what it wants until it sees it.

The public hadn't voiced it's opinion but, the time was ripe for a musical that was happy, exuberant, a pleasure to sit back, watch and listen to. A show with no complications . . . The combined talents of a top Broadway producer, director, writer, composer, choreographer and designers came up with "Hello Dolly!"

It opened at the St. James Theatre, New York, on January 16, 1964, and it's star Carole Channing was signed until 1967—evidence of producers confidence and the box office pressure. It is one of the all-time greats, surpassing even "My Fair Lady" at the ticket windows.

Greatest values in Hawke's Bay at

HUNTS

BOYS AND GIRLS
SCHOOL UNIFORM SPECIALISTS

Baby Wear ●
Mens Wear ●
Boys Wear ●
Girls Wear ●
Womens Wear ●
Haberdashery ●
Manchester ●
Dress Material ●
Ladies Stockings ●

PHONE 89-051
HERETAUNGA STREET
HASTINGS



Director

MARGARET O'SULLIVAN


Margaret, Director of "Dolly", already with one highly successful production presented in Hawke's Bay last year—that of "West Side Story" for the Ngaio Revue Club.

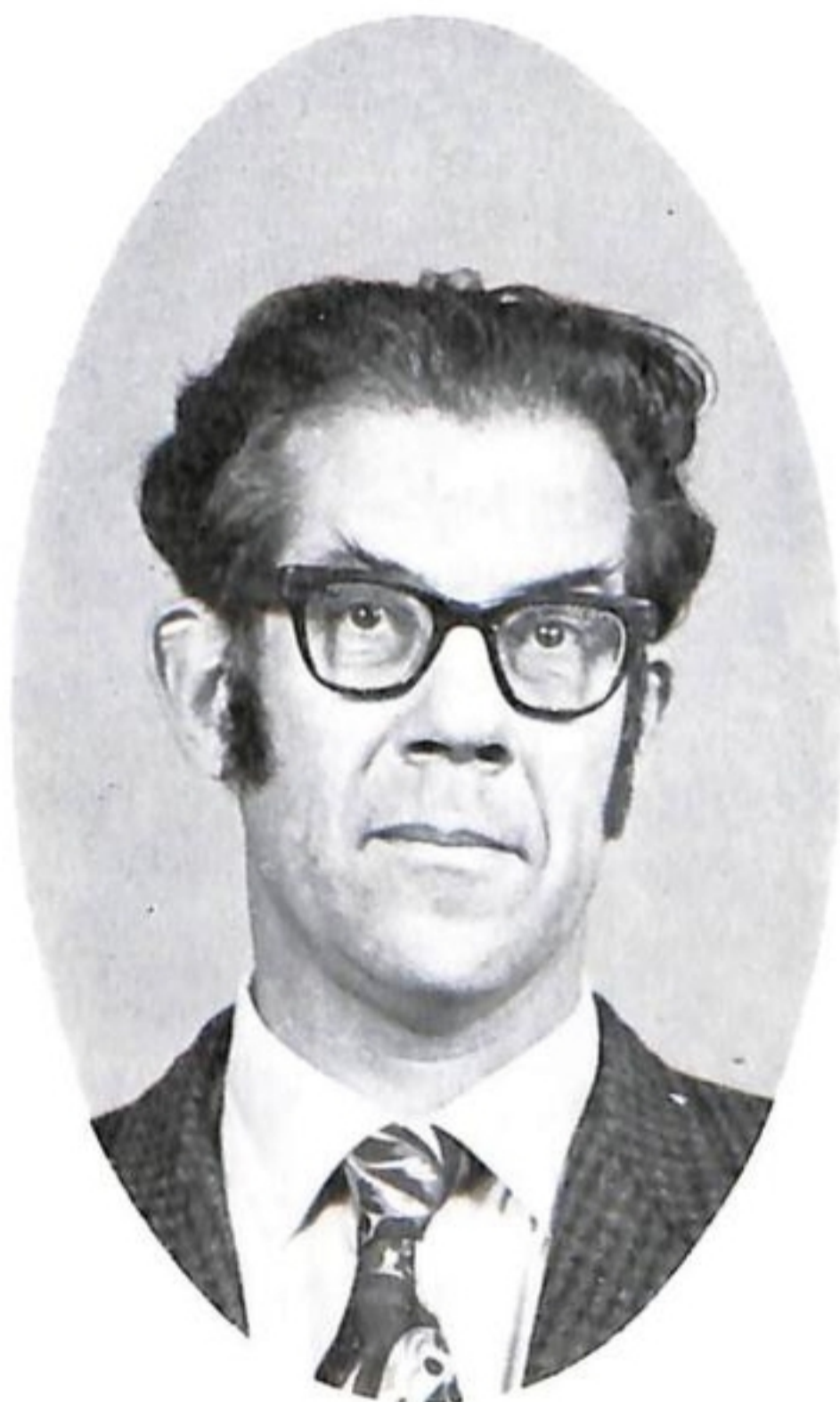
Margaret has been associated with theatre in one form or another all her life. With a New Zealand Premiere such as "Hello Dolly" time in travelling from Wellington to Hastings has certainly reaped high reward in presenting this top class Musical. 

Musical Director

ROSS GANDAR

Musical Director for the successful "West Side Story" seen in Hawke's Bay last year . . . this year directs our chorus and conducts the orchestra for "Dolly".


In recent years Ross has directed the musical aspect of many stage and television shows. Thank you Ross for the time and technical ability you've given in directing and presenting for Hawke's Bay Theatre exceptionally fine music in "Dolly". 



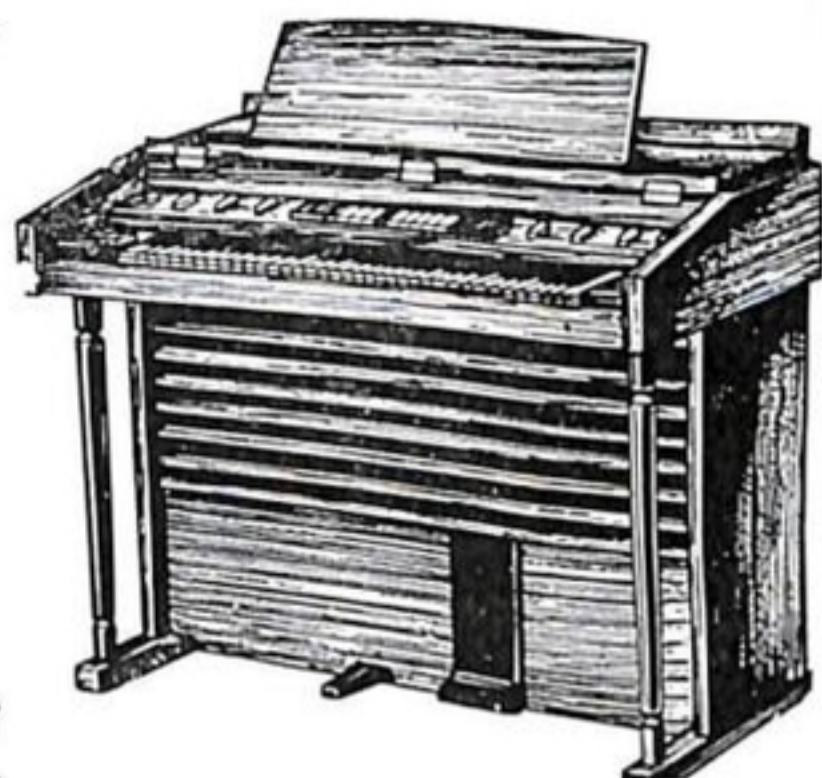
Assistant Director

JUDITH CATER

The one person around whom this whole production revolves

Not only Dolly Levi on stage . . . but also Assistant Producer behind the scenes. With experience and vigour Judith has spent many hours rehearsing principals and directing the chorus—a great personality who the Company wouldn't be without! 

GIVE YOUR MUSIC THAT
"ELEGANT" STYLING
ON A SUTCLIFFE'S
ELECTRONIC ORGAN



We have a marvellous selection of fully contained Console Model Electronic Organs available for Immediate Delivery
MARINUCCI, EKCO, KAWAI, TEISCHORD

CALL FOR A DEMONSTRATION

SUTCLIFFE'S LTD.
HASTINGS & HAVELOCK NORTH



HARVEY FULTON & HILL
HASTINGS

Registered Valuers . Real Estate Agents . Auctioneers
Clearing Sale Experts

Agents: T. & G. Society — South British Insurance Co.

RUSSELL ST., HASTINGS ● **TELEPHONE 86-184**



WISH THE HASTINGS MUSICAL COMEDY
COMPANY A VERY HAPPY 21st BIRTHDAY
AND THANK THEM FOR 21 YEARS OF
ENJOYABLE ENTERTAINMENT.



Choreographer


BETTY BURNS

Six months ago—a fantastic job ahead—now a "fantastic" job accomplished. Principal, ballet and chorus movement play a major role in "Dolly". Betty—with several lead dancing parts in Hawke's Bay Musicals has choreographed and captured so much to set "Dolly" alive. The Waiters Gallop—in itself a highlight of this New Zealand Premiere. 

Chorus Mistress

MARY BELL

A well known name with our Company for many years—well known for her hundreds of hours spent in rehearsing with chorus and principals . . . time given for which we are forever grateful.

Extending this year, a special thank-you for Mary for assisting our Musical Director in producing such magnificent choral work for "Dolly". 



BUY A NEW **HONDA**

MOTORCYCLE OR POWER CYCLE

FROM MOTOR EXTRAS LTD. Queen St., Hastings

YOU CAN BUY ON THESE TERMS

- 6 months guarantee
- 2 free service checks
- H.P. terms by arrangement
- 3 months to pay cash price
- Deposit includes insurance
- You can win a \$10 voucher

TALK IT OVER WITH

MOTOR EXTRAS LTD.

THE **HONDA** PEOPLE OF HASTINGS

KERSHAW'S LTD.

Heretaunga Street East

They stock all nursery requirements, Prams, Push-chairs, Cots, Baby blankets, special Lambskin mattress-overlays, Cuddle Rugs, Baths, Winter Gowns ribbon/lace finish @ \$1.60, Summer Gowns @ \$1.35, full size Naps in four qualities, down to the humble fancy Bibs @ 30c.

KERSHAW'S Ltd., for Furniture, Upholstery, Linos, Carpets, Bedding—complete furnishers.

KERSHAW'S LTD., HASTINGS

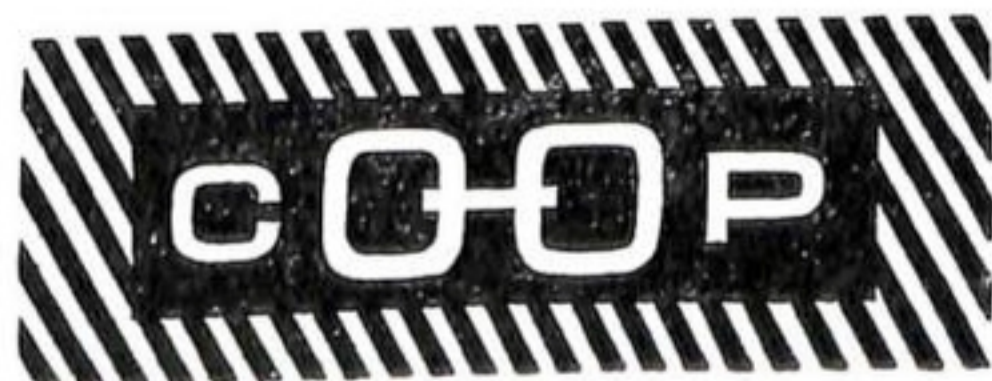


Sovereign Cocktail Table

A FINE PRODUCTION IN NEW ZEALAND TIMBERS
SOVEREIGN WOODWORKERS LTD., WANGANUI

**. . . isn't it time
you changed**

to



. . . with eleven modern, spacious markets throughout Hawke's Bay, stocked full of savings—Competitive prices on everything guarantees that by shopping at CO-OP your total food bill is noticeably reduced!



"Hello Dolly"

1898. An early summer morning . . . Dolly Levi, born Gallagher, widow of merchant, Ephram Levi, leaves New York bound for Yonkers with business in mind—Matchmaking! Matrimonial Matchmaking! To find a suitable second wife for wealthy Mr Horace Vandergelder—having in mind a young widow, Mrs Irene Molloy, but having decided that Mr Vandergelder's second wife will be—Dolly Levi!

On the way to a happy ending Dolly gives dancing lessons, encourages young love, spreads joy, arranges three of four marriages and sways a police court judge.

Involved in some of the ramifications of Dolly's many activities—are Horace Vandergelder's two clerks, Cornelius Hackl and Barnaby Tucker, who finally rebel against the stinginess of their employer and go on an overdue spree in New York, aided by Dolly.

Fate decrees that Cornelius and Barnaby meet the young widow Mrs Molloy, a Milliner, and her assistant, Minnie Fay. Mrs Molloy cheerfully swaps Horace Vandergelder for his clerk, Cornelius, and Minnie Fay and Barnaby are impudently united.

Back in Yonkers after his ill-fated visit to New York, Vandergelder—now without clerks and without Dolly, realises he would be more foolish than ever should he let this wonderful woman out of his life . . . and so asks Dolly, who has conveniently arrived expecting such a turn of events, to forgive and marry him!

It is easy to see why Thornton Wilder titled his original story from which "Hello Dolly" has been adapted, "The Matchmaker."



"Some Enchanted Evening"

SOUTH PACIFIC

"Cockeyed Optimist"

SOUTH PACIFIC

"There's Nothing Like a Dame"

SOUTH PACIFIC

"Bloody Mary"

SOUTH PACIFIC

"Bali Ha'i"

IN NAPIER FROM AUGUST 28

P.S.: You'll want some more . . . "Oliver !" next year

"South Pacific," by Napier Operatic Society, stars Robert Houston, Dawn Unsworth, Anthony Bewley Gillian Davies.

Miss New Zealand 1967 at Mr Ron's Salon



Hello Dolly . . . at Ron's Salon
It Takes a Woman at Ron's Salon
I put My Hand in Hair
at Ron's Salon
Elegance . . . at Ron's Salon
It Only Takes a Moment
at Ron's Salon
Ribbons Down My Back
at Ron's Salon
So Long Dearie . . . at Ron's Salon

Love to see you . . . at Ron's Salon Phone 83-293 Hastings

L. J. HARVEY LTD.

RUSSELL STREET, HASTINGS

STOCKISTS OF

fine bone china
glassware
silverware
kitchenware
hardware
artificial flowers





Dolly Levi

JUDITH CATER

Producer, Dancer, Comediene, Actress, Choreographer—Judith Cater's talents are unlimited . . . as Dolly Levi, an extremely demanding role, Judith excels in looks, personality, acting—and truly lives the part. You'll undoubtedly remember Judith from past productions—but you'll never forget "Dolly Levi".



Horace Vandergelder

JAMES CAMP

James has produced for the Tomoana Players, acted with the same and the Hastings Group Theatre as well as with our company.

As the wealthy, overbearing, staid Horace Vandergelder, James portrays this role to perfection . . . he appears foolish early in the show—but with a change of events and mind—we envy his catch in Dolly Levi.



Dolly Levi (Understudy)

DOREEN MUDGWAY

Lead roles, all aspects of back stage and executive work have involved Doreen with the Company for most of it's productions . . . as understudy to Dolly, hours of rehearsing for a part in which she may not be seen, a task done for which we are really grateful . . . thank you 'Dolly No. 2'.



It only takes a moment . . .

TO OPEN A CAN OF LEOPARD!

LEOPARD BREWERIES LTD. CONGRATULATE THE HASTINGS MUSICAL COMEDY COMPANY ON 21 YEARS OF FINE ENTERTAINMENT

THE HASTINGS MUSICAL COMEDY COMPANY INC.

Presents its 21st Annual Production

Music and Lyrics by
JERRY HERMAN

Book by
MICHAEL STEWART

Director
MARGARET O'SULLIVAN

Assistant Director
JUDITH CATER



Musical Director
ROSS GANDAR

Chorus Mistress
MARY BELL

Choreographer
BETTY BURNS

HELLO DOLLY!

By arrangement with J. C. Williamson Ltd.

CAST in order of appearance

MRS DOLLY GALLAGHER LEVI

JUDITH CATER

Understudy Doreen Mudgway

ERNESTINA DOROTHY LEE

AMBROSE KEMPER JOHN LEIPST

MR HORACE VANDERGELDER

JAMES CAMP

ERMENGARDE FRANCES SIMMONDS

CORNELIUS HACKL DIGBY EDGECOMBE

BARNABY TUCKER BRUCE MURRAY

MINNIE FAY ELAINE BIRCH

IRENE MOLLOY YVONNE HOWMAN

MRS ROSE JOAN WOOLLARD

HORSE CHRISTINE ANDERSEN

CHERIDAH SEWELL

RUDOLPH LAWRENCE GEOR

JUDGE FRED JACKSON

COURT CLERK BOB MURRAY

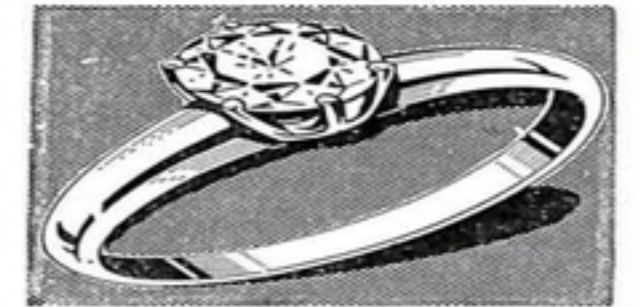


Elegance

. . . in Menswear for Winter '71. Stylish 2 & 3 piece suits from Leading Fashion Houses present "Masculine Elegance" in M & G's Luxurious Upstairs Suitlounge.



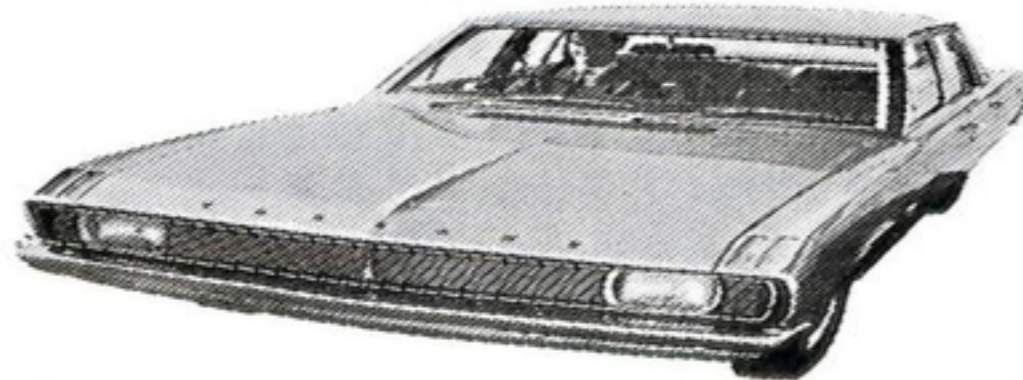
MILLAR & GIORGI (HB) LTD
123 HERETAUNGA ST. HASTINGS



Elegance is a Diamond Ring from

Rosser ENGRAVERS and WATCH REPAIRERS Co. (JEWELLERS) Ltd.

237 Heretaunga Street W
Phone 89-986



We offer you

CONFIDENTIAL

TERMS FINANCED ENTIRELY BY OURSELVES

REPUTATION

SERVING THE MOTORIST SINCE 1908

CHRYSLER
HILLMAN
COMMER

TOURIST MOTORS

LOWEST TERMS

INTEREST RATE OF 8% ON HIRE PURCHASE

SELECTION

NEW & USED OF THE WIDEST RANGE

HASTINGS
NAPIER
WAIPUKURAU

Synopsis of Scenes

ACT 1

- Scene 1: Street scene in New York City in the 1890's.
Grand Central Station.
- Scene 2: Horace Vandergelder's Feed Store, Yonkers, New York.
Yonkers Railroad Station.
- Scene 3: New York Street and exterior of Mrs Molloy's Hat Shop.
Interior of Hat Shop.
Fourteenth Street Parade.

ACT 2

- Scene 1: Outside the Hoffman House Hotel.
Harmonia Gardens Exterior.
- Scene 2: Harmonia Gardens Restaurant.
- Scene 3: Courtroom.
- Scene 4: Vandergelder's Feed Store.

Musical Numbers

ACT 1

Opening Act 1	Chorus
I Put My Hand In	Dolly
Yonkers March	Orchestra
It Takes A Woman	Horace Cornelius, Barnaby & Chorus
Reprise: It Takes A Woman	Dolly and Horace
Put On Your Sunday Clothes	Dolly, Cornelius Barnaby, Ambrose and Chorus
Encore: Put On Your Sunday Clothes	Chorus
Incidental (Hat Shop)	Orchestra
Ribbons Down My Back	Mrs Molloy
Reprise: Ribbons Down My Back	Mrs Molloy
Motherhood March	Dolly, Mrs Molloy and Minnie
Dancing	Dolly, Mrs Molloy, Cornelius & Barnaby
Incidental (I Put My Hand In)	Orchestra
Before The Parade Passes By	Dolly and Chorus
Finale Act 1	Dolly

ACT 2

Entr'acte	Orchestra
Elegance	Mrs Molloy, Minnie, Cornelius & Barnaby
March to Harmonia Gardens	Ernestina
Waiter's Gallop	Orchestra
Hello, Dolly—Agitato	Orchestra
Hello, Dolly	Dolly and Men
Encore: Hello, Dolly	Men
Reprise: Waiter's Gallop	Orchestra
Polka	Orchestra
It Only Takes A Moment	Cornelius
It Only Takes A Moment: Part II	Mrs Molloy, Cornelius and Chorus
End of Courtroom Scene	Orchestra
So Long, Dearie	Dolly
Finale Ultimo	Dolly, Mrs Molloy, Horace, Cornelius and Chorus

The Orchestra

PIANO

Mrs M. Bell

TROMBONE

Mr D. Robinson

TRUMPET

Mr S. Boston, Mr T. Tattersfield

WOODWIND

Mrs E. Hocking, Mr A. Tibbenham

Mr A. Meakin, Mr A. Thorpe

Mr A. Buckley, Mr W. Stephen

Mr O. Knight

BASS

Mr J. Hardacre

PERCUSSION

Mr J. Seton



Cornelius Hackl

DIGBY EDGECOMBE

With experience in many Hawke's Bay productions, Digby's vocal, acting and dancing ability are given full rein in his role as Cornelius—"He's excited about Broadway" and we're excited about Digby!

Barnaby Tucker

BRUCE MURRAY

For a young man, Bruce has had a lot of stage experience. 'Simple' 'lovable' Barnaby finds there's more adventure in New York than seeing a 'stuffed Whale' . . . with Minnie, Dolly, the Harmonia Gardens and Cornelius, he has a 'whale of a time.'



Minnie Fay

ELAINE BIRCH

Elaine has had previous experience in our production "Can-Can" and in Hastings Light Opera major productions and pantomimes . . . a talented actress with all the essentials to portray Minnie Fay

Irene Molloy

YVONNE HOWMAN

Understudy to Laurey in "Oklahoma" last year. It is our pleasure to match Yvonne's personality and delightful voice with the charming Mrs Molloy . . . indeed her face is as pretty as her hats!

**BUILDERS AND
HOUSEHOLD HARDWARE
PAINT
AND WALLPAPER**

F. L. BONE & SON LTD.

HASTINGS

QUALITY WITH VALUE



Ermengarde

FRANCES SIMMONDS

Previous experience with Napier Rep., Hastings Group Theatre, and C.A.S. Theatre Auckland Frances has yearned for a part in a musical for sometime—and we think she's delightful as Ermengarde!



Ambrose

JOHN LEIPST

An active member of the chorus for several years—last year, a part in "Oklahoma". This year, the role of Ambrose creates action aplenty for him, including a polka competition and courting Ermengarde.



Ernestina

DOROTHY LEE

Another first for our Company. A vital role creating action aplenty for Horace—especially with her hootchi cootchi!



Mrs Rose

JOAN WOOLARD

Joan's first appearance on stage for our Company—a minor role—as important to the show as is her strong voice in the chorus.



Judge FRED JACKSON

Well known to Hawke's Bay audiences, Veteran actor Fred has had parts in many previous local musicals. Once again it's great to say "Hello Fred" glad to have you in "Dolly".

**tip
top**

"The Best Show In Town"

for Drycleaning
Laundry
Linen Hire

800 W. Heretaunga St. Phone 68-107 (2 lines)



"Dolly" our 21st production

We've come of age! 21 years of providing Hawke's Bay with the best in Musical Entertainment . . . from home grown Revues to a New Zealand Premiere of Broadway's longest running Musical.

1971—a proud year for us . . . from practices in Tyre Retreading plants, painting scenery in old sheds, rehearsals in the Apple & Pear Board Cool Stores, wrapped in overcoats for warmth . . . to our own large, heated, well lit Rehearsal Hall . . . all the time gaining experience and knowledge of theatre and building audiences . . . you the people who see every year—making our efforts rewarding.

This year "Hello Dolly" a New Zealand Premiere is an exciting choice for us, as our 21st production . . . we welcome you to it's staging!



Past Productions of this Society

1951—HOLIDAY CRUISE
1952—SHOWTIME '52
1953—SHOWTIME '53
1954—SALLY
1955—NO, NO, NANNETTE
1956—ROSE MARIE
1957—NAUGHTY MARIETTA
1958—SHOWBOAT
1959—RIO RITA
1960—STUDENT PRINCE

1961—SOUTH PACIFIC
1962—CAROUSEL
1963—ZIP GOES A MILLION
1964—BELLE OF NEW YORK
1965—SHOWBOAT
1966—CALL ME MADAM
1967—CAN-CAN
1968—PAJAMA GAME
1969—THE KING AND I
1970—OKLAHOMA!

KENWOOD **Official Service Agents**



Sales — Service — Parts

HECTOR JONES ELECTRICAL CO. LTD.

CORNER KING & QUEEN STS.

HASTINGS PHONE 89-049

Building Dolly

. . . a gigantic undertaking—and we're fortunate in having a team of such skilled men, who's hours of work in breaking down old scenery and rebuilding, have produced the impressive sets for this production.

"Showboat" and "Can-Can"—two previous shows, built to lavish scale by our Company provided timber for construction of "Dolly . . . along with mountains of screws, hinges and castors; gallons of glue, bolts of canvas and 25 gallons of paint create a magnificent illusion—a setting in which Dolly Levi can work her magic.



Carl Wright, President of the Company (centre front) with some of his team of builders and property makers.

HERETAUNGA MOTORS LTD.

For top quality used vehicles
'A' Grade Mechanical Repairs

FREE PICK UP AND DELIVERY ON NEXT LUBRICATION

PHONE 88-070



Designed for the Seventies by Hardy Amies

The Waiters Suits are made to
the Exclusive Designs of
Mr Hardy Amies . . .

PROUDLY MADE IN NEW ZEALAND BY
CAMBRIDGE CLOTHING CO., LTD.

WHAT IS AN ELEGANT WOMAN?

YOU

IN BLACKMORE'S FASHIONS

What is a Blackmores woman ?

Well, she's any woman who needs a special somebody to cater to her every fashion whim. She's all woman. And all women. And Blackmores Floor for Ladies is that special somebody who caters for those woman who want fine fashion . . . for the sophisticated woman, fashions by Rosemarie Muller, Babs Radon and El Jay and Society, Sonny and Peppertree for the swinging younger set. Let Blackmores Floor for Ladies be your special somebody who caters to your fashion whims.

Blackmore's FLOOR FOR LADIES

*Congratulations to the members of the
Hastings Musical Comedy Co.
for their time and effort in presenting
another show which is a great success.*

We the . . .

CLIFF PRESS PRINTERS
HASTINGS

are proud to have the opportunity of presenting the programme for

"Hello Dolly"



"Hello Dolly" Posters, Programme & Graphics designed and produced by Artists at Process Signs.

● Graphic Art for Leaflets, brochures, letterheads, labels, cartons & containers; Press & Magazine advertising; Exhibition Stands; Rubber Stereo Cutting.

Silk Screen Printing on any material

PROCESS SIGNS LTD - 116 DUCHESS CRES. HASTINGS PH: 88-134

Beauty . . . is so Personal



The House of Beauty

Skin type, bone formation, colouring, age—personality too . . . and the image we present—fragile or sophisticate, pussycat or panther . . . These are so highly individual that the widest choice of cosmetics is so necessary to meet your special needs.

For the largest selection from the most famous brands, for expert assistance . . . visit our pleasant Cosmetic Centre.

ELIZABETH ARDEN ● CYCLAX
HELENA RUBENSTEIN ● MAX FACTOR
MARY QUANT ● SHISEIDO ● DOROTHY GRAY

Thanks and Appreciation

All Retailers and companies who have supported us with advertising and participation in "Elegance Week".

A. W. Holder & Sons Ltd.

Process Signs, Posters, etc.

H.B. Herald Tribune, Daily Telegraph, N.Z.B.C., Cliff Press Printers, Ray Hutchinson Ltd.

Doreen Millinery Salon (Mrs D. Ritchie)

Hawke's Bay & Gisborne Savings Bank

Management & Staff of H.B. Consumers Co-op Ltd.

Mr Alec Houston, Publicity Photographs

Hastings Citizens Band

Mr Ces. Fitzwater

Oak Foods, Peter Pan Foods Ltd.

U.E.B. Textiles Ltd.

Plummers Millinery Ltd., Auckland (Theatrical Department) Mens hats.

Miss Pamela Kingi—assistant to the Misses Calson.

The Hastings City Council, Mr Bob Cater, Mr L. W. Kennedy, Mr Gwyn Ace, Mr Les Ross.

Toogood Brothers Ltd., Greater Hastings,

Heather Donaldson—Hairdresser.

Mr Alan McCormick, Aerial Mapping Ltd., Mr John Gordon,

Joyce Jeffries (Sweet Stall).

Colour Transparency Service

Lovell Smith—Photographer

Camera House, Hastings, Mr D. Potts Mr Richard Edmonds, Colour Photography.

Shirley Start, Edna Riggs, Verna Foddy, for serving suppers in theatre.

Ian Galbraith, Vic Graham, Harold Robinson for erecting archway.

To the members, friends and business firms who have given so generously of their time and assistance to make this a success, we express our grateful thanks.



The Hastings Musical Comedy Co. Inc.

(A Member of the N.Z. Federation of Operatic Societies)

OFFICERS 1971

Patron	Sir Edwin Bate, O.B.E.
President	Carl Wright, Esq.
Vice-President	G. K. Mitchell, Esq.
Committee	Miss P. O'Leary, Mrs S. Millman, Mr K. Brazier, Mr M. Dale, Mr J. McCarthy, Mr G. Parahi, Mr Cedric Wright
Hon. Secretary	Mrs M. Mitchell
Hon. Treasurer	A. G. Barlow, Esq.
Hon. Solicitors	Messrs Kelly, McNeil & Co.
Hon. Auditors	Messrs Esam & Cushing

SOCIAL COMMITTEE

Frances Murray, Christine Andersen, Peggy Brazier, John Leipst, Thelma Harrington, Zelda McCarthy, Jeanne Hall, Betty Timms, Beth Tong, Dawn Wright, Desmond Riggs.

HONORARY LIFE MEMBERS

Mr H. Spence Mr D. Whitworth Mr W. Wilson Mrs T. H. Brown

HONORARY MEMBERS

Mrs Mary Bell Mr N. J. Toomey Miss May MacDonald
Mrs D. Mudgway Mr K. E. Brazier Miss Rita Howard

SUBSCRIBING MEMBERS

Allan, P. F.	Fleming, R. J.	Lay, Mrs E. G.	Savage, Mrs P.
Baird, H. A. A.	Foster Brook Ltd.	Leipst, B. F.	Seton, J.
Baird, Mrs H. A. A.	Foulds, G.	Leipst, Miss S.	Shakespeare, R.
Barr, Mrs F.	Giorgi, R. V.	Libby, Mrs I. M.	Shooter, W. D.
Bateman, Mrs S.	Giorgi, Mrs R. V.	Lowe, Miss P. E.	Sisson, Mrs I.
Bauerfeind, Mrs G.	Goldman, Mrs J.	Malcolm, Mrs B. A.	Small, Mrs K.
Bayliss, Mrs W.	Goodbehere, Mrs D.	Malcolm, Mr & Mrs K. F.	Smith, C. R.
Beattie, Mrs J.	Graham, L. M.	Manning, Mrs C.	Spence, C. H.
Beckett, Mrs L.	Grant, W. C.	Marshall, R.	Spence, Mrs H.
Beckett, R.	Crowcott, Miss P.	Mills, Miss M.	Strickland, Mrs A.
Beckett, Mrs R.	Hall, T. L.	Mudgway, Mrs C. R.	Sutcliffe's Ltd.
Beckett, W. D.	Hamilton, Mrs J. B.	McCalman, D. J.	Tankersley, Mrs S.
Bennett, G.	Hancock, R. J.	McDermott, J.	Tapson, Mrs J.
Bennett, Mrs R. L.	Hannon, A. J.	McGavock, W.	Teunon, F. G. S.
Binss, J. W.	Hannon, G. J.	McRae, Mrs N.	Thomas, M.
Bone, Mrs V. J.	Hastie, B. R.	Neho, M.	Totty, Mrs J.
Bradshaw, L. E.	Heald, C. H.	Nicoll, I. R.	Treacher, Mrs E. M.
Burns, D. J. W.	Heaps, Mrs J. A.	Nottingham, Mrs I.	Treacher, Miss K. M.
Camp, J.	Hemingway, E.	Nottingham, Mrs R.	Warnes, W.
Cesarini, M.	Hickey, Mrs M. C.	O'Leary, Mrs W. T.	Watt, Mrs D.
Charlesworth, Mrs J.	Hill, Mr & Mrs E. F.	Olsen, D. L.	Whitehead, Miss S. A.
Charlton, Mrs F. W.	Holderness, J. H.	Pacey, Mrs G.	Wiggins, D.
Chester, Mrs A. C.	Hope, Mrs D. A.	Palmer, M.	Wilkinson, Mrs B.
Coates, B.	Hopkins, D. J.	Palmer, N. R.	Williams, K. J.
Cox, P.	Howman, N. J.	Palmer, Mrs O.	Williamson, Mrs G. H.
Cullum, Mrs H. J.	Humphrey, I.	Palmer, R. W.	Wilson, Mrs J.
Dakers, Mrs I. K.	Humphrey, Mrs L. M.	Parkhill, M.	Woodcock, Mrs K.
Dames, Mrs E.	Hunt, J. A.	Paton, Mrs M. M.	Woodham, Miss M.
Dent, Mrs M. N.	Inglis, I.	Poppelwell, H.	Woollard, Mrs J.
Duncan, R. J.	Inglis, Mrs I.	Ritchie, Dr B.	Wratt, Mrs B. A.
Dunham, Mrs J.	Jenkinson, Mrs J. D.	Rogers, Mrs C.	Wright, C. J.
Elsmore, Mrs B.	Jones, J. W.	Rosenberg, C.	Wright, Mrs C. J.
Fairclough, J.	Kirkby, Miss L. M.	Round Mr & Mrs L.	Young, A.
Farmer, Mrs J.	Kirkman, N.	Ryan, Mrs J. A. H.	Andersen, Mrs R. H.
Fippard, N. B.	Kyle, Mrs T. A.	Sampson, Mrs R. D.	

Why not become a subscribing or active member of the Society? Your subscription entitles you to two free seats for our major production, plus seats for all our shows at Concession Rates. Are you a singer, an actor, an artist, a dancer? Can you construct scenery, handle publicity, have you knowledge of stage management, stage lighting? Can you sew costumes, design posters, or do that all important job of making teas at rehearsals and during productions. If you can and are willing to help, please contact—

The Secretary,
Hastings Musical Comedy Company,
Post Office Box 277,
Hastings.



Best tobacco money can buy



Rothmans of Pall Mall - World famous since 1890