



NAPIER OPERATIC SOCIETY

MUNICIPAL THEATRE,  
NAPIER,  
15TH TO 22ND SEPTEMBER,

1/-

MUNICIPAL THEATRE,  
HASTINGS,  
26TH TO 29TH SEPTEMBER.

IT'S FUN SHOPPING AT  
**DOCKERY'S**



THE HOME OF ALL GOOD  
THINGS TO EAT

PLANT NOW

***Anderson's***

**BETTER GROWN  
SEEDLINGS**

J. N. Anderson & Son Ltd. P.O. Box 106 Napier  
Phone 2016 Napier

# NAPIER OPERATIC SOCIETY (INC.)

## 1956 OFFICERS OF THE SOCIETY

Patron: JACK HARRIS, Esq.

President: A. E. HERNIMAN, Esq.

Vice-President: SID HENNEY, Esq.

Hon. Secretary and Treasurer

R. H. WIMSETT, Esq.

Hon. Assistant Secretary:

B. GROSSMAN, Esq.

Hon. Auditor: I. L. PRIME, Esq.

Hon. Solicitor: W. WILLIS, Esq.

Executive Committee:

Mrs E. MONRAD, Messrs PETER COX, E. COLLIER, R. ROSS, R. LAVIN,

C. WHITE, W. B. SPENCE.

---

## THE PREVIOUS PRODUCTIONS OF THE SOCIETY

"The Gondoliers" - - - -	1908	"Floradora" - - - -	1924
"The Mikado" - - - -	1909	"The Arcadians" - - - -	1928
"The Geisha" - - - -	1910	"The Sunshine Girl" - - - -	1929
"The Runaway Girl" - - - -	1911	"Our Miss Gibbs" - - - -	1930
"A Greek Slave" - - - -	1912	"Rio Rita" - - - -	1938
"Toreador" - - - -	1913	"The Belle of New York" - - - -	1939
"Miss Hook of Holland" - - - -	1914	"Boots and All" - - - -	1940
"The Blue Moon" - - - -	1915	"Chu Chin Chow" - - - -	1954
"The Geisha" - - - -	1921	"The Desert Song" - - - -	1955
"A Country Girl" - - - -	1923		

The 1954 production ("Chu Chin Chow") was a milestone in the history of the Society. This colossal musical extravaganza had not been attempted by any Society, other than Auckland, Wellington and Christchurch. This was followed up by a magnificent production of "The Desert Song." This production was witnessed by 15,557 people. It is with the greatest confidence that we now present Sigmund Ronberg's "The New Moon."

## Early History of the Society —

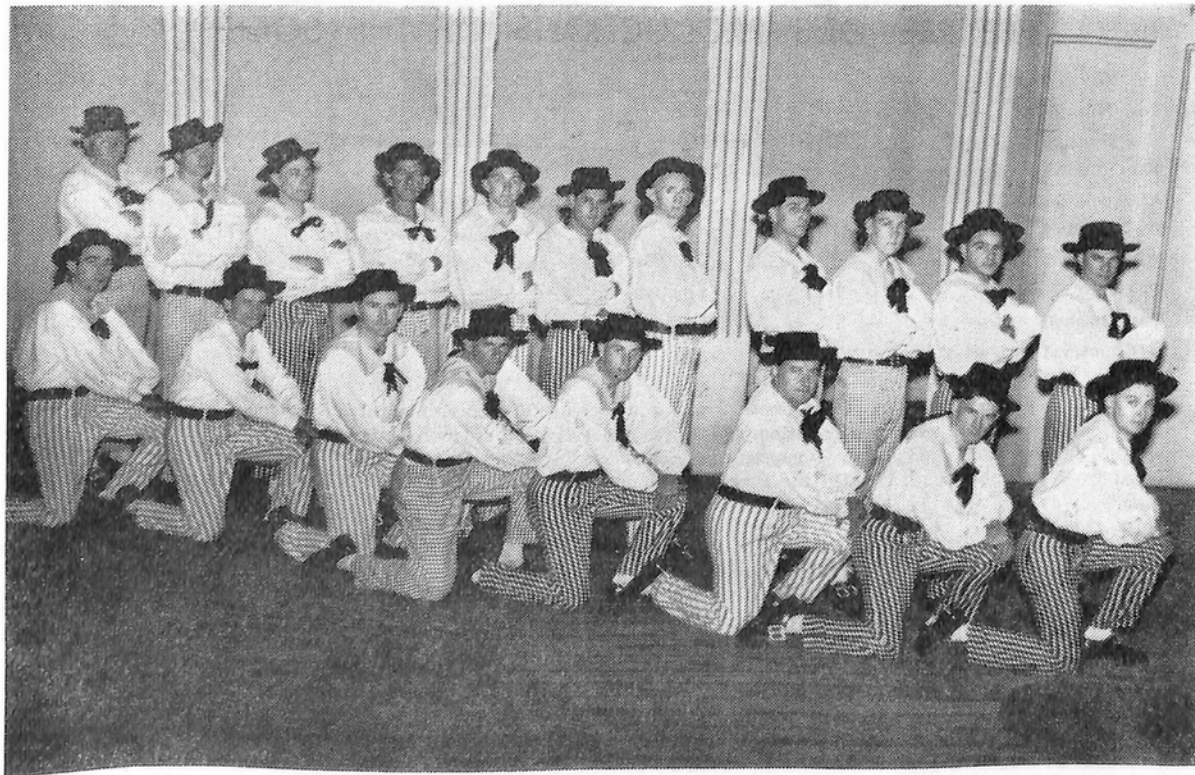
The Society was formed in the 1880's and there is in the Hawke's Bay Art Gallery and Museum a programme of the Society's production of the "Mikado" in March of 1887. The Society also possesses a programme of its production of "Madame Favart" in October, 1882.

Unfortunately, many of the earliest records of the Society were lost in the 1931 earthquake, but the Society can claim to be one of the oldest musical societies in New Zealand.





Ladies and Courtiers at Monsieur Beauvoir's Mansion in New Orleans.



Sailors from The New Moon.



# THE STORY OF "THE NEW MOON"

—:—

"THE NEW MOON" is reminiscent of a stirring period. We have a thrilling story set amidst a picturesque environment, a sea fight that would do credit to Billy Hayes, and hero, heroine and villain in the best style of romantic melodrama. The authors specially notify that the basic story of the play is founded on the life of Robert Misson, a French aristocrat, whose autobiography was written in the late eighteenth century. The period of the play is those fateful years in French history, 1792—1793, and the scene in the First Act is the grand salon of M. Beaunoir's mansion, near New Orleans, and in the Second Act we are in the neighbourhood of the Caribbean Sea, with a kind of Free State Island, with an unconventional colony founded by Robert, on somewhat Utopian lines.

Robert Misson, with his faithful attendant, Alexander, had escaped from France, where Robert, an ardent Revolutionist, had killed a distinguished nobleman. Alexander and he have become bondsmen to M. Beaunoir, who is, however, the owner of a ship called "The New Moon" In pursuit of Robert there arrives the sinister figure of Vicomte Ribaud, whose duty it is to transport Robert back to France.

In spite of his inferior position, the gallant bearing of Robert has made a distinct appeal to the susceptible heart of Marianne, his master's daughter. The intricacies of his wooing constitute the main features of love interest, in which he has for his rival the Captain of The New Moon, Georges Duval. The comic love theme is shared between Alexander and Julie, while the shrewish and most humorous Clotilde has amorous intentions on the heart of Alexander, thereby relieving a much worried Besac.

All these details are satisfactorily set out in the First Act. There is also a typical Spanish setting, where Phillippe stirs the men to accept Robert as their leader. Amid the gay revellers there is a mysterious cloaked figure which, when unmasked, proves to be the wily Ribaud, who is in search of the wanted Robert. A swift change of clothing ensures Robert's attendance at the ball, where he can pursue his role of ardent lover to Marianne.



Grace Tough  
as Marianne Beaunoir.

Robert Houston  
as Robert Misson.

# 1956 - PRODUCTION PERSONNEL - 1956

## THE EXECUTIVE COMMITTEE OF THE SOCIETY and

Producer . . . . .	Eva Moore	Lighting Director . . . . .	G. E. Tyler
Musical Director and Chorus Master . . . . .	Cedric White	Chief Electrician . . . . .	Ira Owen
Ballet Mistress . . . . .	Jean Ballantyne	Floor Electricians . . . . .	R. Cashman
Stage Director . . . . .	Cedric Wright	Dome Spot Operators . . . . .	A. Dobbs
Assistant Stage Manager . . . . .	Les. Woodfine	Properties . . . . .	Jack Isles
Hon. Pianist . . . . .	Winifred Quarrie	Wardrobe . . . . .	J. Savage
Hon. Prompts . . . . .	Jennie Lee	Secretary-Treasurer . . . . .	Edwin Brown
Make-up . . . . .	Ursula Calson	Assistant Secretary . . . . .	Hazel Collier
Call Steward . . . . .	Bill Wells		Rodney Wimsett
	Ellen Petersen		Brian T. Grossman
	Publicity and Programmes		Sid Henney



Members of the Ballet.

Right to left: Ngaire Porter, Angela Horrocks, Norah Glew, Betty Crawford, Heather Bentley, Diane Rowell.



A Group showing Robert Misson (played by Robert Houston), Vicomte Ribaud (Gavin Garner) and Marianne Beaunoir (Grace Tough).



## EVA MOORE



Eva Moore, who is the producer of "The New Moon," the Napier Operatic Society's 1956 production, is probably one of the best known and most successful producers of amateur musical comedy in New Zealand.

She is one of five sisters of theatrical fame. Carrie Moore, a star both in England and Australia, and Australia's original "Merry Widow," is one of the sisters. Edward German wrote the part of Honour in "Tom Jones" for her and her name appears in so many original scores in London that they constitute a record. Lillie Moore, another sister, toured New Zealand with the J. C. Williamson productions of "The Student Prince," "Desert Song," "Arsenic and Old Lace," "The Girl Friend," and many others.

Eva Moore has played the leading soprano roles in all the Gilbert and Sullivan operas, also the "Quaker Girl," "Merry Widow," "Waltz Dream," "The Geisha," and dozens of others. She has travelled more than half round the world many times—a thorough coverage of all the playable towns of Australia, then to China, Japan, Manila, Honolulu, and extensive tours of Canada and the U.S.A. In New Zealand she had produced for Auckland, Wellington, Christchurch, Dunedin, Blenheim, Nelson, Palmerston North (where she created a record for both amateurs and professionals), Wanganui, New Plymouth and Hamilton.

In 1954 she was responsible for the production "Chu Chin Chow," and in 1955 for "The Desert Song," and Napier theatre-goers can remember what a success she made of these fabulous shows. It is with real pleasure we welcome her back to Napier to produce "The New Moon."

This year's activities include productions for the Wanganui Society ("Rio Rita"), Masterton Society ("Rio Rita"), Palmerston North Society ("The Desert Song").



Try . . .

## AERATED HOT SALTWATER BATHS

MUNICIPAL : MARINE PARADE,  
BATHS : NAPIER . . .  
- for -

THEIR WONDERFUL TONIC PROPERTIES.

Telephone 2477 for appointments.

# NAPIER OPERATIC SOCIETY (INC.)

PRESENTS

## “THE NEW MOON”

Book and Lyrics by Oscar Hammerstein 2nd, Frank Mandel and Lawrence Schwab.

Music by Sigmund Romberg.

Try . . .

## AERATED HOT SALTWATER BATHS

MUNICIPAL : MARINE PARADE,  
BATHS : NAPIER . . .  
- for -

RHEUMATISM & KINDRED AILMENTS.

Telephone 2477 for appointments.

### CAST OF CHARACTERS

(IN ORDER OF APPEARANCE)

SEAMSTRESS . . . . .	GLENICE FLAVELL
JULIE . . . . .	MAUREEN BRADY
M. BEAUNOIR . . . . .	GORDON JOHANSEN
VICOMTE RIBEAU . . . . .	GAVIN GARNER
CAPTAIN GEORGES DUVAL . . . . .	KEN STEWART
FOUCHET . . . . .	BRIAN COPELAND
ROBERT MISSON . . . . .	BOB HOUSTON
ALEXANDER . . . . .	BOB ROSS
BESAC . . . . .	REG. JOHNSON
JACQUES . . . . .	BOB WRIGHT
EMILE . . . . .	GEORGE FOSTER
BRUNET . . . . .	VAUGHAN GABITES
MARIANNE BEAUNOIR . . . . .	GRACE TOUGH
PHILLIPPE L'ENTENDU . . . . .	RAY DALTON
DOORMAN OF THE TAVERN . . . . .	JIM BROWNLIE
A FLOWER GIRL . . . . .	MONA FAUCHELLE
A SPANIARD . . . . .	DAVID SWEETAPPLE
PROPRIETOR . . . . .	COLIN WELLS
TAVERN DANCER . . . . .	NGAIRE PORTER
CLOTILDE . . . . .	JOY McNAMARA
ADMIRAL DE JEAN . . . . .	TERRY DURNEY

### SYNOPSIS OF SCENES

(The whole action of the play takes place in the years 1792—1793)

#### ACT 1

- SCENE 1: Grand Salon of Monsieur Beaunoir's Mansion near New Orleans—Afternoon.
- SCENE 2: Entrance to Chez Creole—that night.
- SCENE 3: Interior of Chez Creole—a few minutes later.
- SCENE 4: Same as Scene 2—evening.
- SCENE 5: Same as Scene 1—midnight.

— INTERVAL —

#### ACT 2

- SCENE 1: The deck of The New Moon—late afternoon a week later.
- SCENE 2: The road from the beach, Isle of Pines.
- SCENE 3: The Stockade, one year later.
- SCENE 4: Same as Scene 2.
- SCENE 5: Marianne's Cabin, late that evening.
- SCENE 6: Same as Scene 3, next morning.

Scenery designed by Harry Baker, painted by Will Conroy (late of the Savoy Theatre, London) and constructed under the supervision of Kirkland Yates.

### ORCHESTRA.

Musical Director: Cedric White.

Piano: Winifred Quarrie.

Violins: E. Collier, M. Williams, G. Wade, E. Dunn, V. Tidy, J. Hannah, D. Hansen, N. J. Brunton. 'Cello: S. Girvan. Basses: R. Lavin, B. Hansen, D. Smith. Flutes: E. Hocking, A. Clarke. Clarinet: P. Blanchette. Bassoon: L. Abbott. Trumpets: H. F. Vincent, D. Johnson. Trombone: G. Faulknor. Tympani, Drums and Effects: J. Seaton.

Producer - - - EVA MOORE

Choreography - - - JEAN BALLANTYNE

Photos by RUSSELL YEUNG, HI-LIGHT STUDIOS.

# NAPIER OPERATIC SOCIETY (INC.)

## *Ladies of the Chorus . . .*

Margo Bull  
Margaret Brooking  
Yoland Beuth  
Abelheid van der Bend  
Ruth Calson  
Rose Dassler  
Annette Downes  
Lilian Eddy  
Annette Evans  
Glenice Flavell  
Geraldine Fitzgerald  
Mona Fauchelle  
Valerie Hunter

Pat Jackson  
Marise McDonald  
Kerry McDonald  
Janet McDonald  
Lorna McKeegan  
Jennifer McKenzie  
Naomi Mooney  
Diana Mooney  
Wendy Marsh  
Betty Munro  
Gail O'Reilly  
Rosemary Orton  
Margaret Paton

Beverley Prebensen  
Olga Rean  
Janice Raven  
Nancy Robertson  
Betty Rae  
Eva Robinson  
Betty Robinson  
Irma Sutherland  
Barbara Welch  
Ruth Wilson

## *Gentlemen of the Chorus . . .*

Barry Brebner  
Jim Brownlie  
Brian Copeland  
Cedric Catton  
Terry Durney  
Geof Dohig  
George Foster  
John Gearing  
Vaughan Gabites

Ron Giles  
Tim Holderness  
Rod Hall  
Allan Holt  
Jerry Hoffman  
Peter Halpin  
Brian Isles  
Allan Johnson  
Garth Laurent

Howard Marsh  
Noel Mackie  
Alex McClelland  
James Paxie  
Robin Rae  
David Sweetapple  
Colin Wells  
Bob Wright

## *Ladies of the Ballet . . .*

### **Soloists—**

Ngairé Porter  
Betty Crawford  
Heather Bentley  
Lynette Rivett-Carnac

### **Corps de Ballet—**

Staveley Kennan  
Norah Glew  
Angela Horrocks  
Diane Rowell  
Lynn Hawley

### **Male Dancer—**

Lawrence Ruffell

## MUSICAL NUMBERS

### ACT 1

1. Overture.
2. Opening Chorus: "Dainty Wisp of Thistledown"—Girls.
3. Song: "Marianne"—Robert.
4. Entrance: Marianne and Chorus.
5. Duet: "The Girl on the Prow"—Marianne, Besac and Chorus.
6. Duet: "Gorgeous Alexander"—Julie, Alexander and Girls.
7. Ballet.
8. Interrupted Trio: "I'm Seeking the Hand of a Maiden"—Marianne, Duval and Robert.
9. Finaletto I.
10. Dance Duo—Emile and Gerard.
11. Tavern Scene.
12. Flower Song: "Red Wine in Your Glasses"—Flower Girl.
13. Solo Dance—Tavern Dancer.
14. Song: "Softly as in a Morning Sunrise"—Phillippe and Chorus.
15. Duet: "Stout-hearted Men"—Robert, Phillippe and Men.
16. Finaletto II.
17. Tango Ballet.

18. Tango—Marianne and Girls.
19. Incidental Music.
20. Song: "One Kiss"—Marianne and Girls.
21. The Trial—Julie, Clotilde, Alexander and Girls.
22. Ballet.
23. Finale: "Gentle Airs and Courtly Manners."
24. Duet: "Wanting You"—Marianne and Robert.

## ACT 2.

25. Opening Chorus: "Yo, Heave-o"—Besac and Sailors.
26. Duet: "Funny Little Sailor Man"—Clotilde and Besac.
27. Ballet.
28. Song: "Lover, Come Back to Me"—Marianne.
29. Battle Scene.
30. Finaletto and Drill.
31. Quartet: "Love is Quite a Simple Thing"—Julie, Alexander, Besac and Clotilde.
32. Opening Music—Stockade Scene.
33. Chorus: "Just One Year Ago We Were Mated."
34. Duet: "Try Her Out at Dances"—Julie and Alexander.
35. Bridesmaids' Ballet.
36. Reprise of "Softly as in a Morning Sunrise"—Phillippe and Men.
37. Song: "Never For You"—Marianne.
38. Reprise of "Lover, Come Back to Me"—Marianne, Robert and Men.
39. Dark Change.
40. Cabin Scene: "One Kiss, One Girl."
41. Finale Ultimo.



Gavin Garner as Vicomte Ribaud.



Gordon Johansen as Monsieur Beaunoir.



## CEDRIC WHITE

Has directed the Musical side of the Society for many years. He was a member of the original "Kiwi" Concert Party and remained in England under a Government education grant and passed through the Royal Academy of Music. On his return to New Zealand he toured with the J. C. Williamson organisation, but eventually settled in Napier, where he is in practice as a Public Accountant. He was Musical Director for the highly successful "Chu Chin Chow" and "The Desert Song," and once again is Musical Director for the 1956 production of "The New Moon."



## JEAN BALLANTYNE

Ballet Mistress, is an Advanced Teacher of the Royal Academy of Dancing, London, and has trained with well-known teachers in England, on the Continent, in Australia and New Zealand. In the course of her dancing career Miss Ballantyne has been closely associated with the Amateur Theatre, and has been responsible for numerous Children's Recitals. Her Senior Ballet toured the Hawke's Bay area for the Community Arts Service in 1947.



Robert Misson (played by Robert Houston) greets his faithful follower, Phillippe (Ray Dalton).



**Maureen Brady**  
as Julie.

**Bob Ross**  
as Alexander.



**Joy McNamara**  
as Clotilde.

**Reg. Johnston**  
as Besac.

## NAPIER OPERATIC SOCIETY (INC.)

### CREDITS.

#### Assistants to Wardrobe Mistress—

C. Houston, R. Mardon, M. Salvigny, E. H. White, J. Williams, E. Field, P. Barclay.

#### Assistants to Property Director—

Ron Ingle, Brian Carlen, Trevor Billington, Noel Tolhurst, W. B. Spence, Mrs Spence, Jack Crisp, Lionel Fleming, Paul Stratford, Mrs W. White, Mrs E. Monrad, Miss Pat Spriggs, Mrs J. Reeves, Pearce Williams, John Collier.

#### Assistants to Make-up Supervision—

Bonnie Houston, Helen McConochie, Isobel Johnson, Beth Sweetapple, Dawn Wright.

#### Spinet Pianiste—Mary Powell.

### GRATEFUL ACKNOWLEDGMENTS.

The Daily Telegraph Co. Ltd.

The H.B. Herald Tribune.

Napier Repertory Society for Spotlights.

Derek Olphert—Design and painting of Pirate Ship and sea scene.

Wellington Operatic Society—Scenery sets.

Auckland Operatic Society—Wardrobe.

New Plymouth Operatic Society—Wigs.

Palmerston North Operatic Society—Wigs.

Cyril Eagle—Construction work.

Lionel Fleming—Construction of cannon.

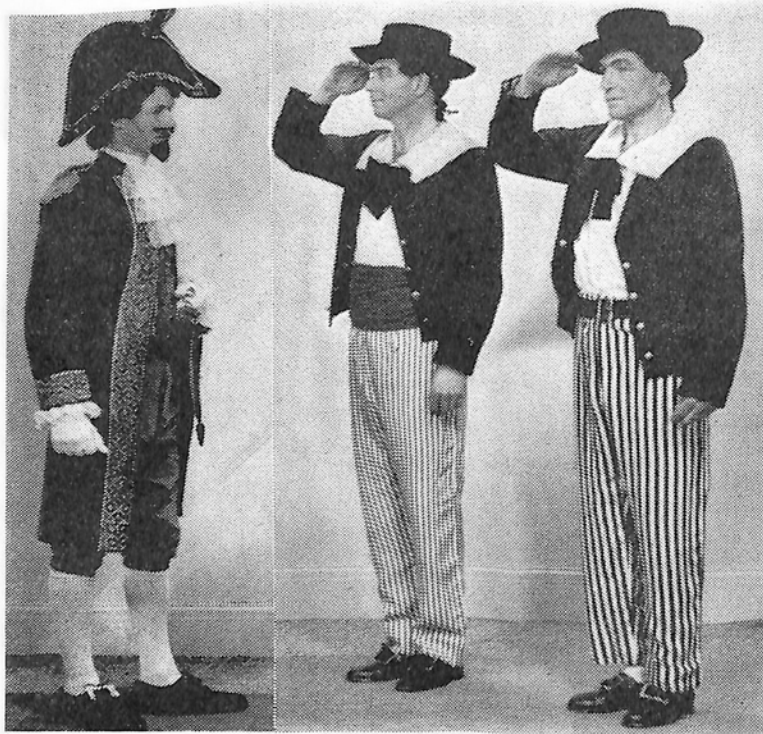
B. R. Meredith & Co. Ltd.—Steel framing for scenery mounting.

Ruth Calson—Construction of chandelier.

Ian Mills—Programme cover design.

Don Brathwaite, Austin McDonald and Beverley Cobb—Sabre instruction.

R. A. Kilby—Antique furniture.



Admiral de Jean (Terry Durney) receives a salute from Brunet (Vaughan Gabites) and Jacques (Bob Wright).



Mona Fauchelle as the Flower Girl.

Continued from Page 3

In the Second Act we are aboard The New Moon, which is supposed to be on its way back to France. The New Moon is attacked by pirates on the way, and Captain Duval, while about to raise the white flag, is deposed by Robert, who then takes command. The pirates board The New Moon and an exciting hand-to-hand struggle takes place, but is stopped when Robert recognises his friend Phillippe as leader of the pirates. (Phillippe had, in fact, set out to rescue Robert.) The pirate ship catches fire and is cut adrift.

The New Moon, under command of its new captain, makes for the Isle of Pines, where, a year later, we meet them all under the unconventional conditions named above. Robert and Marianne have gone through a form of marriage, in name only, and Ribaud tries to bring about a mutiny so that Robert can be deposed and surrendered to the French ships that are lying off the island, but when Admiral de Jean comes ashore to announce that Louis XVI has been guillotined all become citizens of the new French Republic, Marianne cheerfully styling herself "Citizeness Misson," but Ribaud proudly maintains his dignity with his family with "I am the Vicomte Ribaud," with its inevitable penalty.



Ngaire Porter as a Tavern Dancer.



# **BARRYS BOTTLING CO. LTD.**

*Wine and Spirit Merchants*

*Napier*



Hawke's Bay Agents for —

**COATES PLYMOUTH GIN**  
**DANIEL CRAWFORD'S SCOTCH WHISKY**

## **COACH LINES . . .**



TO —

**AUCKLAND, ROTORUA, CHATEAU, TAUPO,**  
**WAIROA, WAIKAREMOANA Etc.**

Coaches available for special trips to any part of the country

**HAWKE'S BAY MOTOR CO. LTD.**

DICKENS STREET, NAPIER.

::

RUSSELL STREET, HASTINGS.



For prompt attention . . .

Remember Our After Hours

Phone 50 Taradale

USE OUR WORLD WIDE TELEGRAPH  
SERVICE

**ROBSON'S TRES BON**

Day Phone 3242 Napier — Say It With Flowers



*Avoid Regrets . . .*

Be completely satisfied that you are getting  
full value for your money . . . Obtain a  
quotation from Blythes for

**BODY CARPET AND  
LINOLEUM.**

For 84 years Blythes have set a standard in Hawke's Bay for  
*QUALITY, VALUE AND WORKMANSHIP.*



Remember . . . our quotation is your protection.

**BLYTHES LIMITED**  
DEPARTMENTAL STORE