



Thomas Ezekiel Cross 1858 - 1952.

Left: Tom in London 1888, observing the English end of the fledgling frozen meat trade.

Right: Tom in 1928 at a luncheon for former chairmen of the Humber Bay County Council.



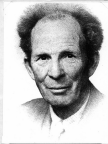
Woodland

Woodland, St. George's Rd. Hastings, modelled on the home of the Barker family, Dumfriesshire Scotland. Tom married Susan Barker who died 1887 when Amy was born. She "Dollie". They moved to Hastings and built this house early 1890s.

Woodland was badly damaged by the 1931 earthquake and the top floor was removed. Tom sold it late 1930s and moved with Dollie to ABERDEEN. The house was moved to Bay View a few years ago.



David Anna Thompson Cross, nee Barker,
(Della) with Tom's children, about 1902.
Rear Amy Susie (Barnicot) daughter of
Susan nee Barker, Jessie (Abraham), Della,
Hugh Edward, Louis Audrey (Harriet)
front Thomas Grant.
Mary Margaret (Dewar) not born till 1900



Hugh Edward Cross. M.C. O.B.E. 1926

In 1923 Hugh took over some acres of hill country sparsely covered with native grass and made of it a beautiful fertile farm whose stock commanded top prices in the saleyards. Like Tom, he served on the County Council, and H.B. Rabbit Board which he chaired for years. A keen golfer all his life, he was N.Z. Amateur Champion in 1920.

He died in Napier in 1962.



Hugh Edward Cross 1896 - 1962.

Second son of Tom and Dottie.

Served in France 1918-1919, with M.C. Major.

Married Dolmiva Bekaham (Mina),

English actress 1922. Took over Palooka
Station, H.B. 1923. Children Catherine,

1923. Susan Jane 1926. Thomas Hugh 1928.

Hugh served with 2AFPF 1940-46 in Egypt and Italy



Patcha Station Homestead, 1901

Patcha Station Homestead was originally a one roomed where fur customers and ploughmen built up to in several stages. It must have reached this form soon after 1882, when Tom bought it and put in a manager with a large family. It survived the earthquakes in 1937 with loss of chimneys and battered front and was altered further after war had broken in the 1950's.



1926. Rowing Club. 1. Mrs. M. G. Grant, 2. Miss M. G. Grant, 3. Miss M. G. Grant, 4. Miss M. G. Grant, 5. Miss M. G. Grant, 6. Miss M. G. Grant, 7. Miss M. G. Grant, 8. Miss M. G. Grant, 9. Miss M. G. Grant, 10. Miss M. G. Grant, 11. Miss M. G. Grant, 12. Miss M. G. Grant, 13. Miss M. G. Grant, 14. Miss M. G. Grant, 15. Miss M. G. Grant.

Family Residence, Palmerston North, 1926

T. Grant Cross, M.C. joined the British Army 1913, fought in France 1917-19, married Isabel "Midge" Harman 1917, retired with rank of Major 1922. Served in India in the Army as planting tea. Visited N.Z. 1926, stayed with Audrey and Ralph Harman - above - and at Woodland.

Audrey, Miva and Hugh, Richie and Jessie Abraham, Grant, with Janet R. on Tricycle, David Harman, Mary Abraham, Ann Harman. Grant and Midge retired to England about 1950



Grandchildren at Woodland, 1922.

Margaret Otto Barker - "Madge" or "M", Tom
Catherine, Susan and Thomas Cross.

The road from Ptocha was tortuous,
rough and dusty and Susan and Thomas
always cavestick. We went to town twice
a year, and to Woodland at Christmas



Cousins at Woodland 1935

*Catherine, Susan, Tom, David Dewar,
Margaret Dewar, Thomas Cross.*

Mary Cross married John Dewar, a
Scottish engineer working in India. They
came home on leave. Other cousins whom
we saw occasionally were the Abrahams
and Howats from Palmerston North.

In 1933 Richie Abraham died. Jessie went into
business making beautiful clothes for
children. The Howats went to Australia.



Three Generations. 1938.

In 1939 Mira went to England. Tom, Della and Al went to Patoka to care for Hugh. When Mira returned they moved to Napier. Woodland had been sold. War had broken out and Hugh joined up and sailed for Egypt in 1940. Mira became a matron at Wanganui Collegiate while a manager ran Patoka. Al died in 1942 and Della in 1943 and Tom went into business in Hastings. I believe he still classed Patoka wool at shearing time. He died in Hastings Hospital in September 1952.