



**THE ROTARY CLUB OF NAPIER'S
JUBILEE PROJECT**

PRESENTS

Kiss Me Kate

AND

**A funny thing happened on
the way to the forum**

Produced by the Auckland Operatic Society

Saturday, 19th February, 1972, Matinee 2 p.m. and 8 p.m.

Sunday, 20th February, at 8.15 p.m.

Municipal Theatre - Napier

20c



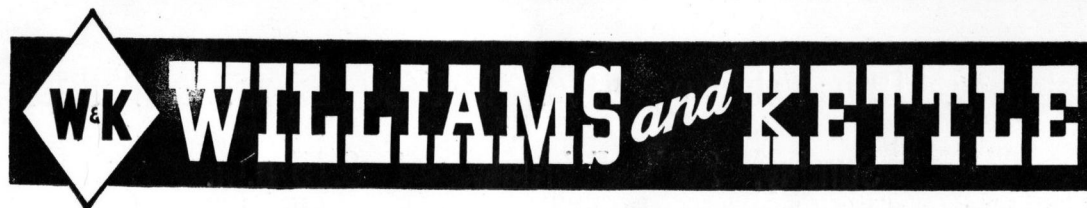
*when the occasion
calls for wines*

THEN ADD TO YOUR
ENJOYMENT

WITH THE RIGHT
WINE FROM W&K.

VISIT OUR MODERN CELLARS AT
ONEKAWA AND MAKE YOUR SELECTION
FROM THE FINEST RANGE AVAILABLE

*remember, every occasion is worthy of the
best—make it an occasion with the best wines from W & K*



TARADALE ROAD . ONEKAWA . NAPIER

A Message from the President



The Rotary Club of Napier is one of the oldest and largest clubs in New Zealand. This club was chartered in 1924 with a membership of less than thirty, which has today grown to 119.

The Rotarians, who represent a cross section of business and professional life in this community, all work enthusiastically for the betterment of our community and greater world understanding.

Rotary is a service club and therefore a non-profit organisation supporting projects including grants to charities and community services, volunteer service abroad, Rotary exchange students abroad, and group study exchange.

With the co-operation of the other Rotary clubs in the area, Interact clubs at the girls' and boys' high schools and also a Rotaract club for young adults have been formed. These have been a very worthwhile project, their efforts have been well received.

I would like to personally thank the committee under the chairmanship of Mr Jack Marshall for arranging the staging of these productions. I would also like to thank you, the audience, for your participation and patronage.

H. P. JENSEN,
President.

SPECIAL THANKS

The Napier Rotary Club expresses special thanks to Rotarian John Anderson, of Napier, who has provided the floral and plant arrangements in the theatre. He is managing director of J. N. Anderson and Son Ltd., nurserymen and house plant specialists, and has given generous support to the club over the years.

DRIVE A NEW CAR FOR 1972

NEW MORRIS MINI 1000	PRICE \$2106
NEW MORRIS MINI 1000 AUTOMATIC	PRICE \$2395
NEW MORRIS MINI CLUBMAN	PRICED AT \$2315
NEW MORRIS 1100 Mk II	PRICED AT ONLY \$2492
NEW MORRIS 1300	COMPARE THIS PRICE \$2601
NEW MORRIS 1300 AUTOMATIC	PRICE \$2878
NEW MORRIS TASMAN	PRICE \$3596
NEW MORRIS KIMBERLEY	PRICE \$3865
NEW MORRIS KIMBERLEY AUTOMATIC	PRICED AT \$4125
NEW WOLSELEY 1300 Mk II	PRICE \$2987
NEW WOLSELEY 1300 Mk II AUTOMATIC	PRICE \$3265
NEW WOLSELEY 18/85 Mk II AUTOMATIC	PRICE \$4448

AVAILABLE FOR DELIVERY NOW

ASK FOR A DEMONSTRATION

Stewart Greer Motors Ltd.

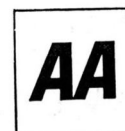
THE MORRIS PEOPLE

L.M.V.D.

NAPIER—Phone 55-119

HASTINGS—Phone 67-009

WAIPIKURAU—Phone 714



THE AUTOMOBILE ASSOCIATION (H.B.) INC.

**EVERY MOTORIST SHOULD
BELONG TO THE "A.A."
ARE YOU A MEMBER?**

If not — Enquire Today — One of our officers will be pleased to call and explain the many benefits of Membership.

Telephone Numbers are —

Napier	56-889	Hastings	84-101
Waipukurau	438	Dannevirke	8717
	Wairoa	7074	

KISS ME KATE

A witty story telling of a Theatrical Troupe's amatory and financial misfortunes during the Baltimore try-out of Shakespeare's comedy "The Taming of the Shrew".

A FUNNY THING HAPPENED ON THE WAY TO THE FORUM

Time: Two hundred years before the Christian Era.
A day in Spring.

The Place: A street in Rome in front of the houses of Senex, Lycus and Erronius

Action continuous with a single intermission.

AN AUCKLAND OPERATIC SOCIETY PRODUCTION

Stage Manager Dennis Cleary
Set Designer

Choreographer Robert Young

Wardrobe Joan Maynard

Lighting Peter Shaw

Show Manager Leslie Maynard



LEONE HORNER



How are YOU saving?

**Ballots up to \$40,000 Can Be Won
if you join**

THE

NORTHERN BUILDING SOCIETY

44 TENNYSON STREET, NAPIER

P.O. Box 597

Phone 53-081

**For MEN'S & BOY'S
WEAR**

See

Mackay's



Emerson St., Phone 56-030, Napier :: Gloucester St., Taradale.

KISS ME KATE

Music and Lyrics by Cole Porter

CAST

PIANIST	Ian Laird
FRED GRAHAM (Petruchio)	David Skinner
HARRY (Baptista)	Ray Dormer
LOIS LANE (Bianca)	Leone Horner
LILLI VANESSI (Kate)	Sherrin Levy
BILL CALHOUN (Lucentio)	Ashley Peppereil
PAUL	Barry Hart
HATTIE	Sandra Sewell
1st GANGSTER	Terry Barry
2nd GANGSTER	John Manning
GREMIO	Rex Blanchette
HORTENSIO	Barry Hart
HARRISON HOWELL	Brian O'Connor

with

PRIN BARRY
CHRISTINE GALVIN
ERIN O'NEILL
JILL PROUDFOOT

Owen Bold Sports Depot

LTD.

FOR ALL SPORTING EQUIPMENT

DALTON STREET, NAPIER

PHONE 58-895

BOOKS ARE OUR BUSINESS

When you require:

★ GIFTS ★ BOOK TOKENS ★ PENS, DRAWING SETS

EVERETT'S BOOKSHOP LTD.

BOOKSELLERS AND STATIONERS

37 HASTINGS STREET

PHONE 55-494

NAPIER

Fosters

Ship Chandlery Ltd.

BOATING & FISHING
EQUIPMENT
SPECIALISTS

TARADALE RD.
NAPIER
Phone 35-828

**FOR CARTAGE, CUSTOMS,
SHIPPING, STORAGE**

and our new

MULTIPLE SERVICE — NAPIER TO HASTINGS

BARRY BROS., LTD.

PHONE 54-064 NAPIER; 89-300 HASTINGS

A FUNNY THING HAPPENED ON THE WAY TO THE FORUM

Music and Lyrics by Stephen Sondheim.

CAST

PROLOGUS & PSEUDELOUS

Rob White

SENEX

Terry Barry

PROTEANS

Barry Hart

Ashley Pepperell

DOMINA

Sandra Sewell

HYSTERIUM

Brian O'Connor

HERO

Rex Blanchette

LYCUS

Robert Young

TINTINABULA

Jill Proudfoot

PANACEA

Christine Galvin

THE GEMINAE

Prin Barry

Erin O'Neill

VIBRATA

Janet Parker

GYMNASIA

Myra Hanford

PHILIA

Sherrin Levy

ERRONIUS

Ray Dormer

MILES GLORIOSUS

David Skinner

PIANIST IAN LAIRD



SHERRIN LEVY

WHEREVER
THERE'S
BUSINESS
THERE'S

Burroughs

FOR — ADDING MACHINES
CASH REGISTERS
CALCULATORS
ACCOUNTING MACHINES
COMPUTERS

Consult—

Burroughs Limited

Kennedy Road, Napier. —::— Phone 54-906

SWISS

BERNINA

Precision Built for

Quality Conscious Women



Firestone

The Strong one

FIRESTONE TIRE AND
RUBBER CO. LTD.
P.O. BOX 310
HASTINGS

SIMKIN & EDMONDS LIMITED

REAL ESTATE AGENTS

Auctioneers' Representatives

DICKENS STREET — NAPIER

Buying and Selling Real Estate in Town and Country.

Renting of Houses, Flats, and Commercial Buildings.

Arranging for Auction of all types of Property.

Specialist Staff in Town Property, Farms, Orchards and Cropping Land.

THERE'S A

GREAT SHOW

OF FURNITURE AND FURNISHINGS

AT

CHRISTIES


OF NAPIER

**WELDING
EQUIPMENT**

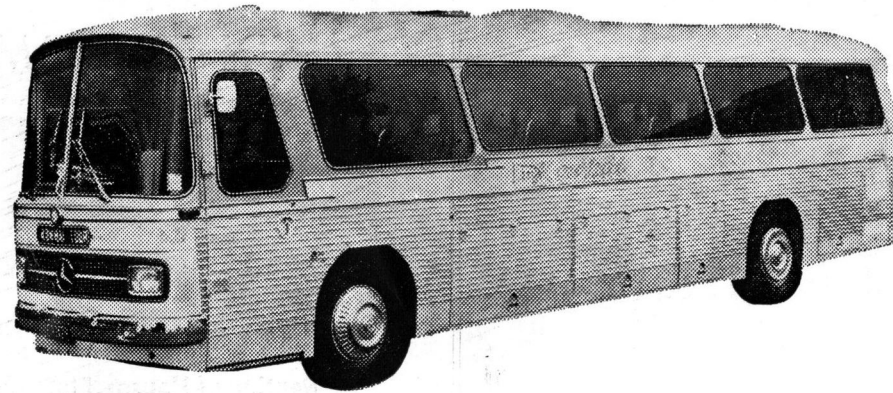
Philips Electrodes, Welding Machines

Flow Meters, Gas Torches, Protective

Clothing — Contact

 **Weldwell (N.Z.) Ltd.**

SALE ST., NAPIER



ENJOY THE PERSONAL SERVICE AND LUXURY
TRAVEL ON A "KOWHAI" COACH TOUR HOLIDAY

**A BIG SELECTION OF DEPARTURE DATES FOR BOTH NORTH AND SOUTH
ISLAND TOURS**

See Your Travel Agent for full particulars or contact —



KOWHAI SCENIC
COACH TOURS LTD.

P.O. BOX 155, NAPIER

PHONE 53-119

The Rotary Golden Jubilee – SOUTH PACIFIC APPEAL

To mark the 50th anniversary of Rotary in New Zealand ten Clubs in Districts 293 of which Napier is part decided to promote an appeal for \$50,000.00 for the following purposes.

- (a) To support volunteer workers in the South Pacific area.
- (b) To provide bursaries to enable selected students to attend educational institutions in the South Pacific.
- (c) To provide grants for educational and training purposes or for the furtherance of practical development projects.
- (d) To provide vocational training in the Pacific Islands or New Zealand. To enable practical assistance in such schemes as irrigation and animal husbandry. To provide for attendance at seminary by Island people including New Zealanders.

A Board of Trustees will be established to administer the trust and the area of activity in the South Pacific area in general with

special emphasis on those Island territories which have, or have had, direct links and affiliations with New Zealand.

The Napier Rotary Club has agreed to raise approximately \$2,500.00 and the purpose of this visit by the Auckland Operatic Society is to give the citizens of our fair city the opportunity of not only enjoying a feast of music repartee but also the opportunity of supporting this appeal which is for the benefit of our near neighbours in the South Pacific who so greatly need and merit our continuing interest and encouragement.

SUPPORT VALUED

The Napier Rotary Club thanks all local business houses who have supported this venture with their advertising, for the 50th anniversary appeal project. We trust that patrons will give return support to these advertisers.

For Superb Cars



DAIMLER, ALFA ROMEO, SKODA

GEE MOTORS LTD.

L.M.V.D.

CARLYLE STREET :: NAPIER

**Coffees of distinction
for people who care**

A CHOICE OF OVER TWENTY BLENDS TO SATISFY
THE MOST DISCERNING PALATE



FRESHLY GROUND WHILE YOU WAIT

— AT —

DOCKERY'S

Specialty Food House

EMERSON STREET

— THE HOME OF ALL GOOD THINGS TO EAT —

Our 33 Customer Services can help you in 33 different ways



If you're a farmer, then your time is money. The more time you can invest in the farm, the better the farm will be. This is where A.N.Z.'s 33 Customer Services can help. And here's why. Firstly, because we've been involved with farmers and farming here in New Zealand for over 130 years, we have a wealth of information and experience that we're only too happy to pass on. Secondly, because of this experience, our wide range of Services will meet all your banking needs comprehensively and thoroughly. They're designed to save you time. So call at your nearest ANZ Bank Branch. We'll welcome the chance to show you how our 33 Customer Services can help you.



AUSTRALIA AND NEW ZEALAND BANKING GROUP LIMITED
33 ways to help you with 33 Customer Services.



HAWKE'S BAY FURS

FOR ALL FUR REQUIREMENTS

Telephone 58-789

Rotarian D. S. McDonagh, Master Furrier

HASTINGS STREET, NAPIER, N.Z.

"The One Stop Comfort Shop"

FOR ALL HOME COMFORTS

- "WARMAIRE" CENTRAL HEATING
- CEILING INSULATION
- AIR CONDITIONING (Buy or Lease)

Whittleston Heating Ltd.

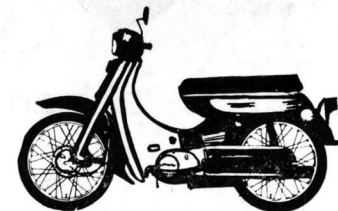
Austin Street, Onekawa.

NEW PHONE 36-724



YAMAHA

IT'S A BETTER MACHINE

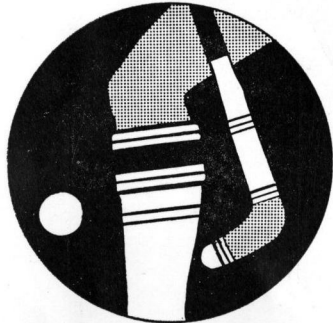


JACK BURN LTD.

NAPIER — HASTINGS — WAIPUKURAU — DANNEVIRKE

WHAT'S YOUR LINE?

SPORT?



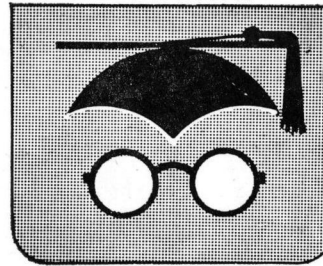
FOOD/FLOWERS?



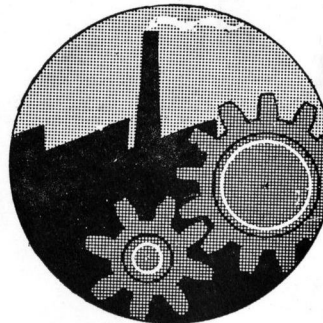
BUSINESS?



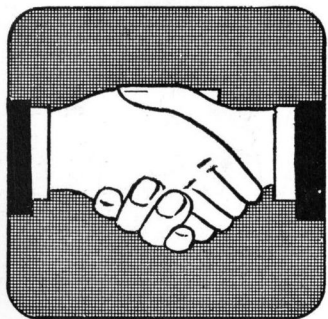
EDUCATION?



INDUSTRY?



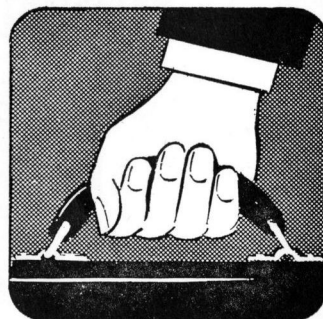
LIVESTOCK/FARMING?



SOCIAL SERVICES?



RELIGION?



PROFESSIONAL?

If you're
getting together
out-of-town

**NAC
GET-TOGETHER
FARE
REDUCTIONS
MAKE THE
GOING EASY**

10% REDUCTION in NAC fares for ten or more adults flying to a common destination for a common purpose:

For full details and conditions ask for the descriptive booklet from your travel Agent or NAC Travel Office.

20% REDUCTION in NAC fares for groups of twenty or more adults travelling between main centres and across Cook Strait during off-peak hours, outside holiday periods.

NAC 'GET-TOGETHER' FARE REDUCTIONS



NAC

NEW ZEALAND'S NATIONAL AIRLINE

TRAVEL BY
NEWMANS

in

Safety — Comfort — Economically

Convenient daily timetables operate between —

NAPIER — HUTT VALLEY — WELLINGTON

NAPIER — PALMERSTON NORTH — WANGANUI

NAPIER — PICTON — NELSON — WEST COAST

NAPIER — PICTON — CHRISTCHURCH

With connecting services to other areas.

Ask for our brochure detailing

NEWMANS COACH HOLIDAYS

Book through any Newmans Office or through any
Travel Agency

