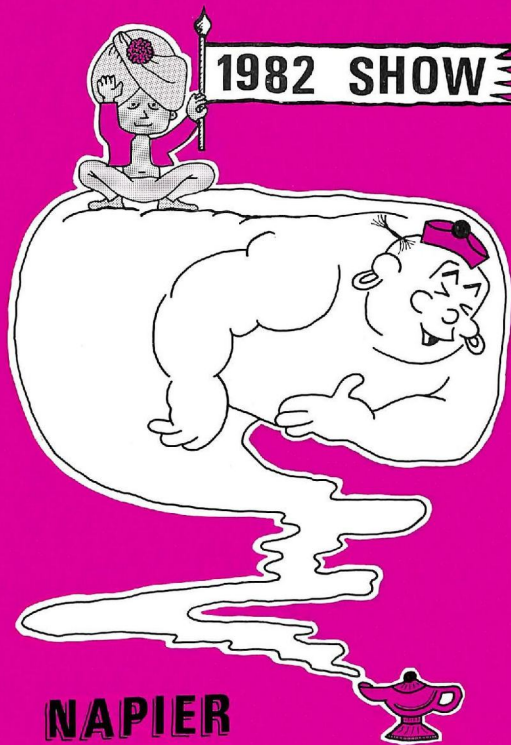


1982 SHOW



**NAPIER
FRIVOLITY
MINSTRELS**



86th YEAR OF ENTERTAINMENT

FOR ARTISTS PAINTS AND ACCESSORIES

SEE FULL SELECTION AT

WALLY IRELANDS

Emerson Street, Napier.

Telephone 54-209

Picture Framing a speciality

Also Stockists of Unframed Prints — Everyday Cards
PROMPT ATTENTION GIVEN MAIL ORDERS

YOU DON'T NEED A MAGIC LAMP TO SEE THE GEMS WE HAVE IN OUR CAVE!!

BMX BICYCLES **10-SPEED BICYCLES**
AND ALL OTHER STANDARD BICYCLES

BICYCLES HAVE BEEN OUR BUSINESS FOR 27 YEARS

NORMAN ETHERIDGE CYCLES

HASTINGS STREET, NAPIER

MEMBER OF MASTER CYCLE TRADERS FEDERATION OF NEW ZEALAND

Make it a hit . . .



Pianos — Instruments — Music — Records

H.B. AGENTS FOR THE FAMOUS KNIGHT PIANOS

FOR TOP GRADE MEAT ONLY
TRY

EAGLE MEAT CO.

16 LATHAM STREET, NAPIER

PHONE 56-063

Free Delivery

Personal Service



JOHN FERGUSON

"MESSAGE FROM OUR PRESIDENT"

Welcome to this, another production by the Napier Frivolity Minstrels. You will see this year that the Frivs in keeping with style changes, have for the first time in 86 years discontinued with the traditional Mr Interlocutor and Darkies. I'm sure you will all enjoy the fine minstrel show our show director Joy Boston has arranged for tonight's production.

In choosing "ALADDIN", Margaret Atkins once again has a top pantomime for your entertainment during the second half of our performance. As in many years now, Edith Ferguson brings superb control to our stage singing and I'm sure you will enjoy our large orchestral group. Thank you one and all for another successful performance.

NAPIER FRIVOLITY MINSTRELS INC.
PROUDLY PRESENTS THEIR
86th MINSTREL SHOW
FOLLOWED BY THEIR 1982 COMEDY PANTOMIME
ALADDIN

EXECUTIVE COMMITTEE 1982:

President: JOHN FERGUSON.

Vice-Presidents: GLYN LAWRENCE. MURRAY BURNELL.

Secretary: FAY ROGERS.

Treasurer: CHRISTINE MEAD.

Committee: Mesdames SUE WILTON, JUNE TAYLOR, Messrs KEN SMITH, KEN SUTTON, LEON SPEAKMAN, MIKE COATS, ERIN McBRIDE.

Advertising Committee 1982: Chairman: MURRAY BURNELL.

Committee: SUE WILTON, VIRGINIA TRASK, MICHAEL COATS.



Gilberds

SOFT DRINKS

HECTOR McGREGOR LTD.

(Established 1917)

ELECTRICAL CONTRACTORS AND RETAILERS

We recommend **THE FRIVS** for delightful entertainment
BUT SEE US FOR QUALITY ELECTRICAL WORK and APPLIANCES

Repairs of all types of Electrical Appliances a speciality

— CALL OR PHONE US ABOUT YOUR ELECTRICAL PROBLEMS —

Dalton Street

Phone 57-569

Napier

NAPIER PARENTS CENTRE

CONGRATULATE

NAPIER FRIVS ON A FUN FILLED FAMILY SHOW

Parents Centre also provides great family fare with Parent Education Courses — Ante Natal, Post Natal, Early Childhood and Adoption — and Coffee Mornings where parents with young children can meet for a chat.

IF YOU WOULD LIKE TO KNOW MORE ABOUT US,
PHONE JILL DUCKWORTH, 444-864 NAPIER.

**The Home Entertainment
specialists**

Colin Townshend's

35 EMERSON ST. (where the Carpet's Greener!)

NAPIER

Phone 56-999 or 56-955

Residential, Colin 432-534



**COLOUR T.V. ● VIDEO ● REFRIGERATION
HI FI & STEREO SPECIALIST**



FAY ROGERS

SECRETARY:

In this important role we are fortunate once again having Fay Rogers. Secretary for many years now, is also our Prompt for the pantomime Aladdin. During the year Fay also assists in the wardrobe department which certainly makes sure of a busy and continuous season. The Frivs wish to thank Fay for her efforts in yet another production.

SHOW DIRECTOR: MINSTREL SHOW

Tonight's production of the Frivs 1982 Minstrel Show certainly is a fast moving slick presentation. Credit must go to the many long hours Joy has involved herself with staging a production such as this. The Frivs sure have a winner in Joy — and they hope you also find tonight's performance a winner. Thank you Joy Boston — from the Frivs.



JOY BOSTON



MARGARET ATKINS

SHOW DIRECTOR: PANTOMIME

Having produced a number of pantomimes for the Frivs, Margaret once again brings another high standard with Aladdin. The cast have all worked well to bring Aladdin to the stage tonight, and the Frivs also thank Margaret for her efforts in the presentation of this pantomime. Do sit back and enjoy another 1½ hours of comedy — with ALADDIN.

MUSICAL DIRECTOR:

Edith Ferguson is a well known name in musical circles in Napier, and the Frivs are indeed proud to have Edith associated in the capacity of musical director once again.

Edith is responsible for all the musical numbers, with the detailed singing on stage and control of our well balanced orchestral ensemble.

The Frivs thank Edith for her untiring efforts in the music department of our show.



EDITH FERGUSON



Clendon Street Electrical Ltd.

CADBURY ROAD ONEKAWA NAPIER TELEPHONE 434 388

FOR ALL YOUR ELECTRICAL WORK
TRY US FOR PROMPT EFFICIENT SERVICE.

- ★ Domestic
- ★ Commercial
- ★ Country Work



FIVE VANS WITH
RADIO TELEPHONE
CONTACT

Also

Local installing agent and N.Z. Distributors for
"TEVAC" Odourless Toilet Systems

TIRED AND DIRTY CARPETS

Spring back to life again with...

"DEEP STEAM" CARPET CLEANING



Agents for
Deep Steam
Carpet Cleaning



Consult . . .

H.B. Kiwi Cleaners Ltd

(Established 1952)

SOIL IS EXTRACTED – THAT'S THE DIFFERENCE

NAPIER
Phone 435-540

HASTINGS
Phone 435-540

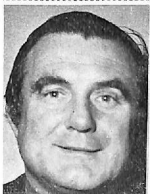
CENTRAL H.B.
Waipawa 206



WALLY IRELAND

THE FRIVS PATRON

Wally Ireland has been a member of the Napier Frivolity Minstrels since 1918, and is still actively involved with the company. Wally is in charge of refreshments during our rehearsal period, a task for which the Frivs say thank you.



TREVOR ATKINS

STAGE MANAGER

Trevor Atkins is this year in charge of all the behind the scenes workers. A most important and time consuming task, that Trevor handles extremely well. A Friv for many years, the Frivs say thank you — for this production back stage.



EVELYN FOSTER

WARDROBE MISTRESS

A very demanding role, one which Evelyn has carried out well with the help of a team of assistants. The costumes bring to the stage a bright and colourful scene. The Frivs also thank Evelyn and helpers for their work.



H. W. LOUIE (1969) LTD:

408 ELLISON ROAD — HASTINGS

REGISTERED ELECTRICAL CONTRACTORS

AUTHORISED CHAMPION SERVICE AGENTS

WIDOW TWANKEY LETS US SERVICE HER WASHING MACHINES — WE COULD ALSO SERVICE YOURS.

INDUSTRIAL & DOMESTIC INSTALLATION & MAINTENANCE

PHONE 87-606 AFTER HOURS 86-662 or 799-782

MICROWAVE OVENS

Come to the Professionals —



Duckworth's

switched on service



3 FREE
1½ HOUR
LESSONS

• Our Customers!

FOR YOUR ENTERTAINMENT

The Frivs

86th MINSTREL SHOW

Directed by: JOY BOSTON

Musical Director: EDITH FERGUSON

1. OPENING: "LET ME ENTERTAIN YOU", "A WONDERFUL DAY LIKE TODAY", "DIAMONDS ARE A GIRLS BEST FRIEND", "SMILE", "LET ME ENTERTAIN YOU".
2. Lesley Jeffares sings for you, "DON'T CRY OUT LOUD".
3. Dixie numbers featuring, "A GOOD MAN IS HARD TO FIND", "MUSKRAT RAMBLE", "WIBBLY WOBBLY WALK", "ALEXANDER'S RAGTIME BAND".
4. JOHN FERGUSON'S MAGICAL MYSTERY with Chorus numbers, "PERFIDIA", "BLUE MOON", "DOMINO".
5. Glyn Lawrence sings for your enjoyment, "WHEN I FALL IN LOVE".
6. "I ENJOY BEING A GIRL" — featuring Wayne Lister and Chorus.
7. A beautiful number, "DON'T CRY FOR ME ARGENTINA" — Helen Emery, Evelyn Foster, Glyn Lawrence.
8. Our dancers feature in "ZORBA THE GREEK".
9. Lesley Jeffares and June Lawrence give you "ALL THAT JAZZ".
10. Three numbers, "THANK HEAVEN FOR LITTLE GIRLS", "GIGI", "THE NIGHT THEY INVENTED CHAMPAGNE" — full Chorus featuring Vivienne Chapman as Gigi.
11. Our moment of comedy "IN THE PARK".
12. South Pacific medley "THERE IS NOTHIN' LIKE A DAME", "A WONDERFUL GUY", "HONEY BUN", "I'M GONNA WASH THE MAN", "THIS NEARLY WAS MINE" — full Chorus and Dancers.
13. Our Grand Finale featuring the music from a latest hit show of London, "A CHORUS LINE". "HELLO TWELVE", "DANCE 10", "WHAT I DID FOR LOVE", "ONE".

INTERMISSION

The Frivs reserve the right to alter the programme if necessary.

NAPIER FRIVOLITY MINSTRELS INC.

PRESENT

ALADDIN

Directed by: MARGARET ATKINS

Choreographer: JOY BOSTON

Wardrobe: EVELYN FOSTER

Musical Director: EDITH FERGUSON

Stage Director: TREVOR ATKINS

Prompt: FAY ROGERS

CAST IN ORDER OF APPEARANCE

PING	—	—	—	—	—	—	—	—	—	—	—	IAN CHAPMAN
PONG	—	—	—	—	—	—	—	—	—	—	—	RICHARD HARRIS
WISHEE WASHEE (Laundry Boy)	—	—	—	—	—	—	—	—	—	—	—	ROGER WILLIAMS
PEE-GEE (A Panda)	—	—	—	—	—	—	—	—	—	—	—	SUE WILTON
EMPEROR OF CHINA	—	—	—	—	—	—	—	—	—	—	—	GRAEME THOMPSON
EMPRESS OF CHINA	—	—	—	—	—	—	—	—	—	—	—	JULIE ADAMSON
WIDOW TWANKEY	—	—	—	—	—	—	—	—	—	—	—	GLYN LAWRENCE
PRINCESS BALDROUBADOUR	—	—	—	—	—	—	—	—	—	—	—	KERRY McBRIDE
ALADDIN	—	—	—	—	—	—	—	—	—	—	—	JUNE LAWRENCE
ABANAZER	—	—	—	—	—	—	—	—	—	—	—	WAYNE LISTER
SLAVE OF THE RING	—	—	—	—	—	—	—	—	—	—	—	MARIE ORTQUIST
SLAVE OF THE LAMP	—	—	—	—	—	—	—	—	—	—	—	HARRY KOEFOED
CAMEL (Front)	—	—	—	—	—	—	—	—	—	—	—	ERIN GIBSON
(Rear)	—	—	—	—	—	—	—	—	—	—	—	VIRGINIA TRASK

CAST OF VILLAGERS, COOLIES, PRINCESS' ATTENDANTS, CAVE SPIRITS, SLAVES, EASTERN DANCERS, ETC.

SCENES

Act I —

- Scene 1: The Market Place—Pekin.
- Scene 2: Outside of Pekin.
- Scene 3: Widow Twankey's Laundry.
- Scene 4: On the way to the Cave.
- Scene 5: The Magic Cave.

Act II —

- Scene 1: Another Room in the Laundry.
 - Scene 2: Aladdin's Palace.
 - Scene 3: Outside the Palace.
 - Scene 4: The Palace — Africa.
 - Scene 5: A Street in Pekin.
- Back to the Palace for Finale.

MUSICAL NUMBERS

- Entracte: The Orchestra.
- "Ching-a-Ling", Villagers.
- "Sixty Glorious Years", Widow Twankey.
- "Make Way", Ping Pong & Chorus.
- "Widow Twankey Laundry", Chorus.
- "Let's Go Dreaming", Aladdin & Princess.

- "Spirits of the Cave Ballet", The Dancers.
- "Washboard Blues", Chorus.
- "Knee Deep in Diamonds", Aladdin & Chorus.
- "The Rich Abanazer", Abanazer.
- "Eastern Dance", Aladdin, Twankey, Wishee.
- "Ching-a-Ling", Chorus.

OUR DANCING TEAM



DEBBIE O'LEARY



VIVIENNE CHAPMAN



LYN ROBERTSON



LINDA HARRISON



MISSI CHRISTIANSEN



**JOHN FERGUSON
TRAVEL CENTRE**



FOR ALL YOUR TRAVEL ARRANGEMENTS
BOTH INTERNATIONAL AND DOMESTIC



JOHN FERGUSON

PHONE 53420 or 53917
BROADLANDS MALL, NAPIER

PERSONAL ATTENTION ASSURED

FOR YOUR NEXT HOLIDAY
CONSULT JOHN or MAUREEN
YOU'LL BE PLEASE YOU DID



MAUREEN BAYLEY

OPEN FRIDAY NIGHT and SATURDAY MORNING

FULLY BONDED MEMBER OF THE TRAVEL AGENTS ASSOCIATION OF N.Z.

GENTLEMEN OF THE STAGE



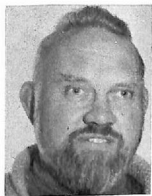
DAVID BOSLEY



IAN CHAPMAN



JOHN FERGUSON



HARRY KOEFOED
(Panto only)



RICHARD HARRIS



GLYN LAWRENCE



WAYNE LISTER



KEN SMITH



GRAEME THOMPSON



ROGER WILLIAMS

LADIES OF THE STAGE



JULIE ADAMSON



HELEN EMERY



EVELYN FOSTER



ERIN GIBSON



ROWENA GODFREY



LESLEY JEFFARES



JUNE LAWRENCE



KERRY McBRIDE



CHRISTINE MEAD



MARIE ORTUIST



VIRGINIA TRASK



SUE WILTON

MEET OUR GRAND ENSEMBLE



Back Row (left to right): RAY BLEWDEN (Violin), CHARLIE JUKES (Violin), MURRAY BURNELL (Sax), KEVIN MORRIS (Sax/Clarinet), PAUL JEFFARES (Guitar), LEON SPEAKMAN (Bass).
Front Row (left to right): JOHN REED (Clarinet), JENNIE LEAHY (Clarinet), JENNY GILDER (Pianist), EDITH FERGUSON (Musical Director), FRANCIE TURNER (Cello), BOB BOSTON (Drums).
Inset: STUART BOSTON (Trumpet). Absent: CLIFF HOWELL.

ACKNOWLEDGEMENTS

Programme Design and Artwork: MAURICE BARTLETT.
Compiling Programme: JOHN FERGUSON.
Programme Advertising: FAY ROGERS.
Ushers/Theatre Staff, Napier: Valued Assistance.
Photography: KEN SUTTON and BRUCE EVANS.
Assistance with Photograph: ALAN ROGERS.
Back Stage Assistance: MURRAY NATTRASS.

H.B. Motor Co.: Management and Drivers.
Front of House Theatre: DICK and STELLA WOOD.
Signwriting Assistance: GORDON SPIVEY.
General Valued Help: BOB WRIGHT.
Rehearsal Facilities: WALLY IRELAND and Helpers.
General Assistance: HATFIELD INDUSTRIES.

FOR ALL MORNING & AFTERNOON TEAS
AND HOT LUNCHES

DON'T GO PAST THE

Napier Cafeteria

HASTINGS STREET

FOR FAST EFFICIENT SERVICE

FINALLY OUR BEHIND THE SCENES WORKERS



Back Row (left to right): WAYNE BLAIR, HARRY KOEFOED, DAVID PHILLIPS (Lighting), STEVEN KIRBY (Sound), GRAHAM ROGERS, DAVID CARR (Lighting).

Front Row (left to right): KEN SUTTON, ROD HATFIELD (Sound), PETER ELLIOTT, ERIN McBRIDE, TREVOR ATKINS (Stage Manager).
Inset: GRAEME LISTER (Scenery Painting).



Back Row (left to right): NGAIRE BOYCE (Wardrobe), PAM CHRISTIANSEN (Wardrobe).

Front Row (left to right): JUNE TAYLOR (Wardrobe Supervisor), EVELYN FOSTER (Wardrobe Mistress), FAY ROGERS (Wardrobe/Promps).
Inset: LINDY KING (Back Stage). Inset: SUE GREENTREE (Make-up Supervisor).

Absent: KAY HOLDER.

.....
DON'T FORGET OUR SELL-OUT SUMMERTIME PRODUCTION

"THE FRIVS RADIO TIMES SHOW"

RESTAURANT THEATRE — WAGHORNE ST., AHURIRI

Show Dates:

FRIDAY, 4th MARCH — SATURDAY, 26th MARCH, 1983
(Inclusive)

LIMITED SEASON ONLY — CANNOT BE EXTENDED

\$15.00 Per Person Includes Full Meal, Beverages, Show

ADVANCE BOOKINGS are now being accepted for this show from

.....
BOOK EARLY FOR SEATS

.....
"3rd Successive Year"

JOHN FERGUSON TRAVEL CENTRE

BROADLANDS MALL, NAPIER

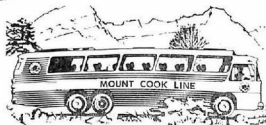
PHONE 53420/53917

P.O. BOX 229, NAPIER

.....
NEXT TIME YOU JOURNEY NORTH . . .
TRAVEL WITH THE



MOUNT COOK LINE



CHARTER COACHES

We have 19-Seater, 33-Seater, 36-Seater,
43-Seater and 46-Seater Coaches available
for hire to anywhere in New Zealand.
TRY US FOR YOUR NEXT CLUB TRIP

Daily Coach Service to —

HAMILTON TAUPO AUCKLAND WAIROA ROTORUA GISBORNE
and all other Northern Destinations



**MOUNT
COOK LINE**

NAPIER, HASTINGS, TAUPO, WAIROA, GISBORNE, AUCKLAND, WELLINGTON & PAHIATUA
.....

WORLD LEADER



The best tobacco money can buy

Year after year Rothmans pay top prices for the most select leaf at the world's leading tobacco auctions. Discerning smokers around the world appreciate in Rothmans the true King size flavour that relies on extra length, a finer filter, and the best tobacco money can buy.

Health Dept. warning: smoking may endanger your health. Low/middle tar

KS 650