

# Friends Of Opapa Railway Station Inc.

## *Inside this Newsletter*

- |                              |
|------------------------------|
| 1. SPECIAL VISITORS          |
| 2. TREE PLANTING.            |
| 3. WORK IN PROGRESS.         |
| 4. PRESERVATION<br>PROGRESS. |
| 5. ACKNOWLEDGEMENTS.         |
| 6. COMING EVENTS!            |

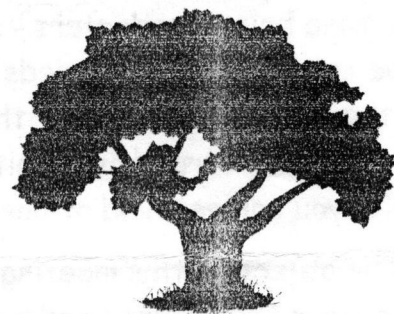
Work on the Cart Dock is progressing well and this feature and will soon see a fence around the edges as in the original. Repairing the Waiting Room doors, The doors have had fitted securing bars and a rod to enable them to be closed and secured without nailing timbers to the floor! and the pickett fence also recieved some attention.

### **SPECIAL VISITORS**

On the Saturday we had a visit by Hastings Councillor Megan Williams with son Jordan, and Mrs Lily Baker of the Historic Places Trust.

### **TREE PLANTING CEREMONY**

Tom Wheeler and Spud Langley attended the tree planting ceremony at Kaye Highwoods Te- Aute store museum. This was to celebrate the area name change, giving back the name of Te- Aute. Which was changed in 1913 to Opapa.



There was a small newspaper artical about this in the Hawkes Bay Herald Tribune!

If anyone can lay their hands on it please give it to Michael Betts so we can archive it with our records.

### **WELCOME TO THE FRIENDS OF OPAPA RAILWAY STATION . Inc.**



On the 1st June we had our Annual General Meeting at the station with a turn out of seventeen people with everyone being very enthusiastic about getting on with restoration work.

### **WORKING BEE.**

It so proved to be with a working bee on saturday and Sunday the 14 & 15th June with 14 helpers preparing the station building for painting.

The nameboard over the Main Entrance was replaced with a replica of the one removed over two years ago! and never returned!



## Does anyone know?



Apparently a stationmaster by the name of Ray Shirley was administrator, or operator of the station during the early 1960's. (last I heard of he was residing in Gisbourne) this being the era we are trying to replicate - it could be worthwhile getting hold of this person to get ideas and pictures of what we are aiming for!

The last couple of weeks saw the removal of the guttering which was a small task in itself! The guttering is rotten all the length, so we will have to replace the whole length of it not just a short section as we hoped.

The Cart Dock has already had a small change! In that the entrance has been widened, The sides of the dock are next to be fitted with the corners already concreted in place, and a small fence to finish it off!

## The plumbing!!!

\*\*\*\* Who can help \*\*\*\*

Presumably! If I am correct, The 3/4 main pipe used to feed the tank, and the feed for the taps and toilet system was from the tank? am I right!

If so! let me have drawings so we can get a tank up for water.

## ELECTRICITY

Approaches have been made to the chief electrician at the Power Board to get the Power cable laid from Spud's house to the railway station building.

A meter has been donated by an inspector of the company and the next step is to dig a trench for the cable and route the cable to the meter box (yet to be found) . We need approx 85 metres 4.0mm cable and a meter box approx 2 feet square.- any ideas! Plenty of helpers with shovels!!!!!!!.

## APOLOGIES.

It was decided at the last meeting that we would have the next meeting about the school holidays, Sorry people!

### NEXT MEETING

To be held at the Station

9:30 a.m Sunday

27 July.

Please bring Shovells to help dig fence post holes.

Please bring weed eaters.- so we can cut down the weeds to the North and South of the Station. Petrol driven units if you can get hold of one.

The object of this meeting is to clear the grounds and have the posts for the picket fence put in place.

Anyone got a post hole borer! or can you get one at a good price for the loan of! -

if so ring Mike at [Phone number withheld - KB] after 6:00 pm.

## ACKNOWLEDGEMENTS

The next page acknowledges all those whom have donated or discounted items to the Railway Station.

Without their help this venture would be a harder task than it is.

**Thank you all!**

# !Friends Of Opapa Railway Station Inc. vol 3 July 1997.



## WORK IN PROGRESS

Prepare and paint station  
spouting and downpipes  
erection of cart dock.  
erection of pickett fence  
Complete waiting room.  
Drainage of low spots.  
Replace pot belly stove & flu  
Dismantle & renew farm fence  
along N. paddock boundary,  
power connection.  
Toilet bowl & cistern.  
washhand basin  
Platform sign.  
Single mans Oxide Hutt.

## WORK COMPLETED.

Sign over foyer.  
Holes repaired in main station  
room.  
Bulletin Board.  
Waiting room seat.

## WORK COMPLETED CONT'D

ticket shutter.  
Mailbox replaced.  
Phone shutter replaced.  
Louvre windows in toilet.  
Lantern light in front of station.

## GENERAL NOTES

Anyone wanting to spend a  
Saturday at Ormondville  
Railway Station or the  
pahiatua Railcar Society,  
please let Spud know! Ph.  
8768367.

Working bees are verry  
important and so we can get  
maximum progress in a short  
space of time we need as  
many persons as possible to  
help out!



We are slowly climbing that hill  
of success and every step is a  
step to completion!



## HEARTFELT SYMPATHIES

To Sandra and Doya:  
upon losing their baby Jade. whom  
passed away on the 2nd July!

### JADE CASSIDY GREY

Please guys accept our most  
Sincere Sympathys and  
Condolences. - regards from the  
committee and assuredly from any  
member whom reads this issue!

## THANKS TO !

Members of the Committee  
whom are prepared to stand for  
yet another year.

## EVERYONE!!!

## WHO HAS HELPED IN ANY WORKING BEE.

## KEEP UP THE GOOD WORK!

Helen Hapi

For helping set up the first meeting  
and being a committee member for  
the first term

## GET WELL SOON!

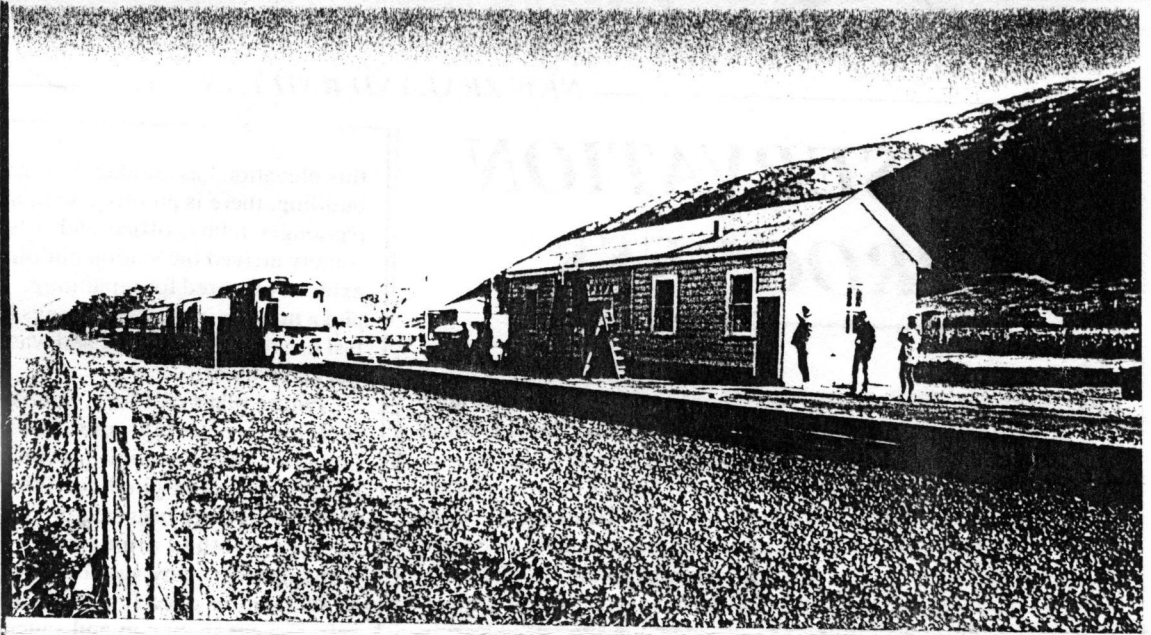
Helen Hapi - Whom has not  
been well for some time now...  
Please make a speedy  
recovery!

WE WANT TO THANK THESE PEOPLE SO FAR, FOR DONATIONS OR DISCOUNTS

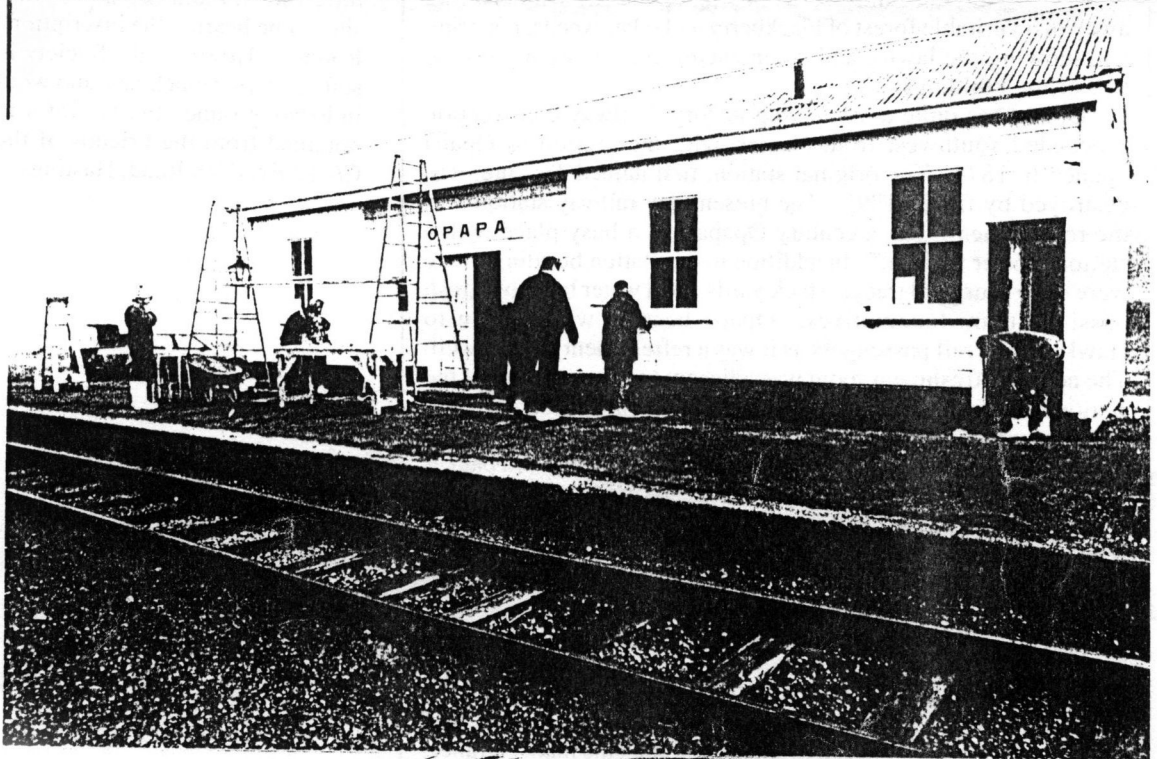
Electric Meter		15/06/97	Rick Barrick.	Power Board
Door lock metal & bolts		20/6/97	M. Betts	
Pot Belly Stove		25/07/97		Stewart & Melva Barr
Fibre Board	20% discount	25/06/97	Tumu Timbers	Peter - Branch Manager
Oxide Hutt		8/4/97	Stewart & Melva	
Bulletin Board		1996/97.	Tom Wheeler	
Workbench			Tom Wheeler	
Waiting room seat			Tom Wheeler	
Paint for ceiling			Tom Wheeler	
Phone Shutter			Tom Wheeler	
Mail box & Electric jug			Tom Wheeler	
Lantern Light		1/1/97	Tom Wheeler & Chas Bone Plumbers	
Station Nameboard		4/6/97	Tom Wheeler & Spud Langley	
Security Bars for main doors		20/6/97	Mike Betts.	
Computer & records/newsletter			Mike Betts	
Use of weed eater/ plants			Ray Beattie.	
Use of Mowers			Spud Langley	
PAint Undercoat			Spud Langley	
Post for pickett Fence			Spud Langley	
Wire for Boundary fence / Battens			Spud Langley	
Cement & Builders Mix			Spud Langley	
Limestone for drive & parking area			Spud Langley	
Weedspray			Spud Langley	
Station Bell			Paul Mahoney	
Plants (iris)			Vicki Robinson	
3/4 Inch mains tap.		7/97.	Andy Joseph	
WATER TANK STAND		7/97.	STAD. BARR.	



Bay Express  
15<sup>th</sup> June.



Working in the  
mist Sun. 15<sup>th</sup>  
June.



Roy Beattie  
Spud Langley  
Andrew Potts.  
John Potts.  
14<sup>th</sup> June



1997

# PRESERVATION PROGRESS

**FRIENDS OF THE OPAPA RAILWAY STATION:** Another recent addition to the diverse range of railway preservation societies in New Zealand is this new central Hawke's Bay group, specifically set up to restore the historic Opapa railway station and adjacent buildings. Largely a result of Hastings resident Kelvin Langley's dedication and enthusiasm to help preserve another small piece of rail heritage, an incorporated society was formed on the 1st of February 1996 to manage the overall project. To date this has concentrated on tidying up the site with clearing away of a veritable forest of blackberry and other weeds, restoring and mowing the lawns, and commencing conservation work on two of the buildings.

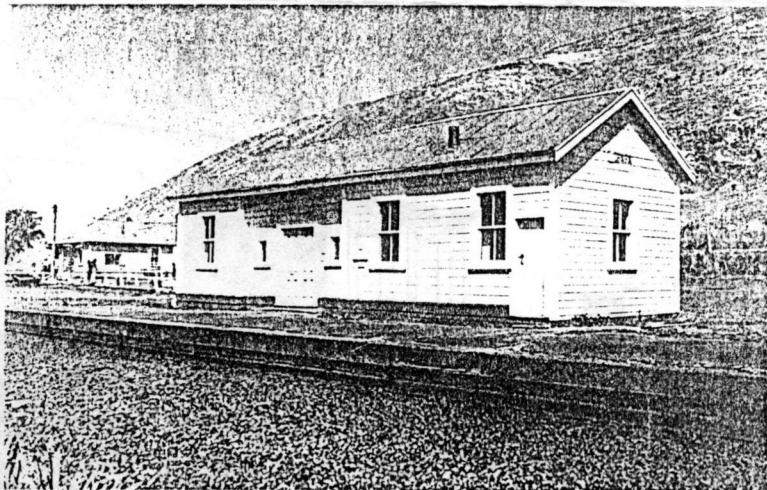
Opapa has quite a fascinating history. Railway construction proceeded southwest from Napier, with the section to Opapa opened in 1876. The original station, first named Te Aute, was destroyed by fire in 1895. The present day railway station was the replacement. For a century Opapa was a busy place with a station master and staff. In addition to the station building, there were once four yard tracks, stock yards and a water tank to refresh passing steam locomotives. Opapa became well known to Hawke's Bay rail passengers as it was a refreshment stop as well. The actual refreshment room was adjacent to the north end of the station, but was redundant after railcars were introduced, and duly demolished in 1945. South of the Opapa station is the steepest grade on the Hawke's Bay railway, that frequently required banker engine operations to assist southbound trains up the 1 in 46 grades to the siding at the top of the hill. Local traffic declined from the 1960's, with the goods yard finally closing in 1981, and the facilities being removed. The station building and crossing loop remained in use for tablet train control until 1991.

The actual station is a relatively simple gabled building, and is believed to be a variation of the Vogel Class 4 station, although its architectural origins are uncertain. The roof is corrugated iron while the exterior walls are clad in rusticated weatherboards. The trackside facade, originally symmetrical around the main entrance, has a recessed bay flanked by sash windows. The north end of

this elevation has another entrance, while at the south end of the building, there is an office with another entry. The interior has a passenger lobby, office and a ladies waiting room. Since the society arrived the station building has been cleaned out, and the exterior prepared for repainting. Inside, damaged door surrounds and a number of the wall linings have been repaired (the station's last use before being rescued was as an ad hoc garage to repair an old car or two!).

Future plans call for a number of secondary jobs to be done, including replacing some railway picket fences around the boundary of the station precinct. Of significance two railway houses in very original condition remain. The northern one of the pair has since been acquired by Mr. Langley, and rehabilitated to give another dimension to the Opapa station project. Concurrently many suitable items are being gathered to display in the station once it is fully restored, including a number of refreshment room cup and saucer fragments recovered from the site, some bearing the inscription "Te Aute Railway Refreshment Rooms". However, the Society is currently looking for a pair of suitable tablet machines, and would be grateful for any assistance in locating same. Further information on this new group can be obtained from the Friends of the Opapa Railway Station Inc., C/- [Address , Hastings, 4021.

withheld - KB]



ABOVE: The newest community based railway station project in the country is based on the small village of Opapa in central Hawke's Bay. Preliminary restoration work had started on the historic century old station building, when photographed on the 27th of December 1996. PHOTO: Reid McNaught

*Friends Of Opapa Railway Station Inc.*

C/- secretary/treas.  
[Address withheld - KB]  
Hastings.

CourierPost-speed & flexibility ++++++

HAWKES BAY MSC NZ SPM 17-JUL-1997 ++++++



**Tom Wheeler**  
8 Tasman st  
Hav. Nth

Postage donated by 'RAUREKA MOTORS' For all your motoring needs

---



# Friends Of Opapa Railway Station Inc.

## Inside this Newsletter

- |  |
|--|
| 1. SAFETY PLAN                           |
| 2. NEW GROUPS.                           |
| 3. WORK IN PROGRESS.                     |
| 4. PRESERVATION PROGRESS.<br>by Lee Hall |
| 5. REAL GOOD NEWS                        |
| 6. COMING EVENTS!                        |

**IMPORTANT NOTICE!**

**PLEASE READ!!!**

A copy of the SAFETY PLAN has been placed in the draw of the desk at the Railway Station.

We all must be familiar with the PLAN and read the booklet, be prepared to sign it after reading and understand the information.

This is necessary and if we don't enforce it we will be taken to task by the O.S.H.

So! for everybody's sake and for the sake of the station read, understand & sign the SAFETY PLAN



**WELCOME TO THE FRIENDS OF OPAPA RAILWAY STATION . Inc.**



On 27 July we had a very good turnout of people to assist digging post holes for the fence and shifting lengths of rail (from over the fence).

### **NEW GROUP!**

#### **HAWKES BAY RAIL.**

This new group is based in Napier and is made of Hawkes bay Branch of the N.Z. Railway & Locomotive Society which will dissolve at the end of the year.

#### **AIMS:**

*These are to preserve and maintain railway heritage buildings and surrounds and to help excursion trains and railcars through the Hawkes bay and Gisborne Lines.*

#### **PROJECTS.**

*Already the group have nearly completed the Eskdale Station with the finishing coat of paint to be applied on Sunday 23rd November.*

*Anyone wanting to help or just to have a look around ring SPUD on*

[Phone number withheld - KB]

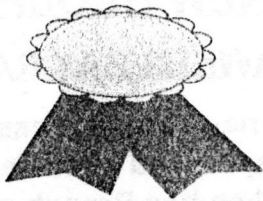


**B.B.Q**

**At Opapa**

Station with the new group  
6:30 p.m. 8th December  
Bring own refreshments.

---



**OFFICIAL OPENING**

The official opening of  
ORMONDVILLE Station  
after 10 years of work will  
be at 2:30 p.m.  
opening speech by M.P.  
Wyatt Chreech.

---

**EXCURSION!**

An excursion from  
Palmerston Nth (diesel  
hailed) and shuttle buses  
to Norswood Fair 7 kms  
distant.

contact Spud!! for more  
details

\*\*\*\*\*

**New  
members**



Always on the look-out for  
New talents.

The more we have the  
least we each have to do!

Welcome to

**Ivan Rule & family**

Thank you for joining our  
group of workers.

**SUBS!**

**There still remain some  
unpaid subs for 1997**

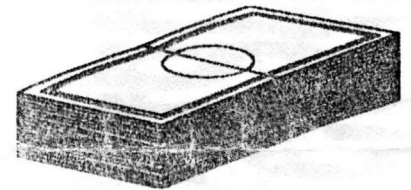
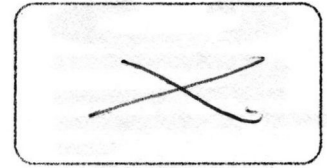
**It is a condition of our  
constitution that all  
members must be  
financial!**

**Those that are not will  
not be allowed voting  
rights and if they are on  
the committee they will  
be removed of any  
responsibility.**

**A tick in the area below will  
signify paid members.**

**A cross will signify UNpaid  
members.**

---



**MONEY!!!**

**We need MONEY!!**

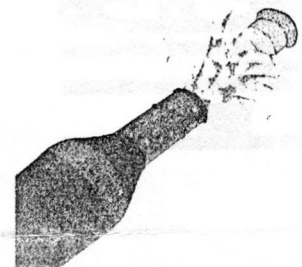
But

Thanks to Trustbank  
Community Grants we now  
have enough money to repile  
the Station.!

This means that we can get  
on with the inside of the  
building once it is levelled  
out.

By the time the Newsletter is  
sent out we will have this  
money in our account and we  
will be waiting for this job to  
be completed.

**THANK YOU  
TRUSTBANK.**



# !Friends Of Opapa Railway Station Inc. vol 4 nov '97.

## ***GISBORNE CITY VINTAGE RAILWAY PROGRESS***

*by Lee Hall.*

On Saturday 8th November I made the trip to Gisborne at the invitation of the city's vintage rail group to inspect progress on the alterations to their two former FM class guards vans which are undergoing conversion to passenger cars.

My original involvement with the FM vans began some years ago when I carried out the structural design and prepared plans for the conversion of two vans owned by the H.B. Y.M.C.A. The YMCA later came to an arrangement with the GCVR for them to use the Y's conversion plans and subsequently I have made several trips to Gisborne to inspect the works in progress.

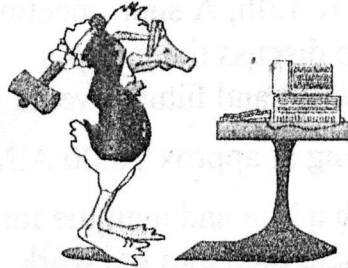
It was a very pleasant surprise to arrive at the depot to find their engine, W.A. 165

outside the shed resplendent in gleaming black paint and polished brasswork ... and in steam. This was only the second time the loco had been fired up since restoration and had been towed from the shed as the steam pipes to the cylinders were removed while temporary connections were made to the steam supply to purge pipework and test the generator and other workings.

She certainly looks a very smart engine (2-6-2T) and is a real credit to the efforts of the Gisborne

group. Judging by the considerable attention the loco was attracting from the passers by in the short time I was there, it is clear that she will be a real drawcard and asset to Gisborne.

I understand the GVCRA are currently in negotiation with Tranz Rail Ltd to come up with an opening agreement. In the meantime, with the work on the locomotive practically complete,



their next priority is to get passenger cars ready for service. The group had purchased the FMs from Railways several years ago with the intention of converting them to passenger vehicles as no passenger cars were available at that time. The conversion work has proved to be a fairly major task and last year, when the opportunity arose, the GVCRA successfully tendered for two ex Trans Rail suburban cars as



backup.

Most of the work on the first FM cars was carried out at the GVCRA.

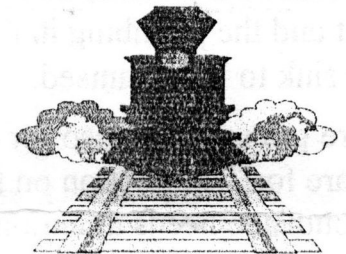
The structural alterations are complete and the exterior of the car has been painted in in Railways Red with silver grey roof and is

awaiting fitting of windows and internal fit out.

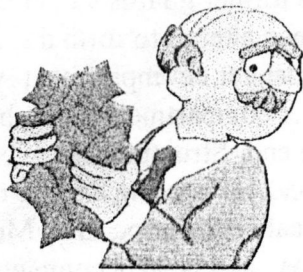
The former guards van body has been altered to form a single passenger compartment with a toilet compartment and lobby at one end. Structural work on the second car is being carried out by local engineering firm, Monk Bros., and is 90% complete. In this car one of the original luggage modules has been retained and the former toilet and central entry lobby will be converted into a larger toilet compartment suitable for wheelchairs. The balance of the car has been converted as the first. There is still quite a bit of work to be done with the fit out of the cars including power supply, lighting, air conditioning, linings and installation of the seating however when completed the vehicles will be first rate.

In the meantime work has started on upgrading the better of the two suburban cars. This has included replacing the roof lining material, decayed timber wall bottom plates, steel floor plates to one end vestibule and general external panel work. I got the impression that this car could be ready in a matter of weeks.

Hopefully it won't be too long now before we see WA 165 back on the road.



# !Friends Of Opapa Railway Station Inc. vol 4 nov '97.



## WORKING BEE!

Summer is here and so too are the longer hours we need to do the jobs that we did not get done during Winter.



## SO!

DECEMBER 13 - 14  
IS WORKING WEEKEND.

*Commencing 9.00 a.m.*

we need to wash the station ,  
Inside and outside.

Prepare the platform walls for  
painting and splash some  
paint about these walls,.

The Chimney needs to be  
fitted and made to look the  
part.

Toilet wall needs to be re-  
built and the plumbing in the  
sink to be organised.

More groundwork also for us  
to care for! The section on the  
Southside needs attention

and the North side fence also  
needs working on!

An annoying hole in the  
Southend wall that lets birds  
in is also in need of fixing!

ALSO!

We need a meeting!

WHEN!

Sunday 13th, A short meeting  
to discuss the group's  
activities and future events.!

Starting at approx 10:00 A.M

With a bite and a nibble for  
lunch, then into the work

WANTED!

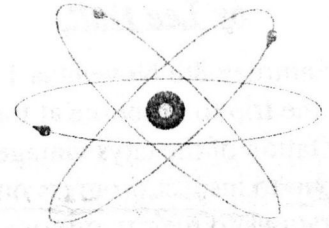
POWER

CABLE: -

4mm OR 6mm wiring cable  
for transferring power from  
spuds house to the station, we  
have the switchboard to  
modify and install but we  
have had little luck picking up  
approx 85 metres of 4mm  
cable for the short trip . We  
really need this to provide  
lighting and electrical needs,  
but will not need be required  
to carry more than 10 amps.  
6mm will be o.k but will not  
be necessary due to the little  
amount of current use.(we  
will use 6mm if anybody can

get it at the right price -  
donated or just given to us).

Anybody know where we can  
scavenge some from?



or at least pick it up at a verry  
reasonable price.

\*\*\*\*\*

The Water stand!

I have reclaimed the  
remaining parts of the water  
stand BUT there are many  
missing pieces. Spud and  
myself took photos at  
Ormondville but a few more  
pieces would make it easier  
to put together!- If anyone has  
any plans or measurements  
then give them to Spud or  
Mike Betts.

All that is left is to just wish  
you all a very merry  
Christmas and a great New  
Year.

*MERRY CHRISTMAS*

&

*HAPPY NEW YEAR*