

THE HASTINGS LIGHT OPERA COMPANY

presents

# VALLEY OF SONG



**NAPIER MUNICIPAL THEATRE**

**MAY 5th and 7th**

**HASTINGS MUNICIPAL THEATRE**

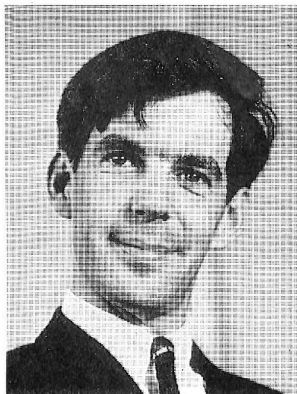
**MAY 10th to 14th**

## PRODUCER

---

### JAMES MORGAN.

James Morgan's first real venture into show business began in the early days of the Hastings Musical Comedy Co., and since then he has worked with every theatre group in Hastings, and with the Napier Repertory Society. His first production was the American drama "Tea and Sympathy" for Hastings Group Theatre. There were demands throughout its performance for the season to be extended and extended again. Another of his productions included the adaptation of "Daniel in the Lion's Den" into a musical play for the Hastings Wesley Youth Group, and also producing a prize winning play in the British Drama League competition before going overseas nearly three years ago. After Valley of Song ends its season he will be producing a Tennessee Williams play for the drama festival. For his long hours of work and his untiring efforts in this production we express our grateful thanks.



## Foreword

### VALLEY OF SONG.

(By Ivor Novello.)

Little has been written about this operetta, mainly because Novello had not completed it before he died. It was not until 1963 that Lyricist Christopher Hassall, and Composer Ronald Hammer, finished the work, which included new arrangements, and additional songs, two of these being "Look in my heart" and "What is it now?"

"Valley of Song" was first presented in Blackpool in 1963, and then played in London where "The Daily Express" acclaimed it as one of the brightest shows of the year.

It seems apparent that Ivor Novello was writing this show around his hit tune of the First World War, "Keep the Home Fires Burning". He had composed it as a young man and the world wide recognition he received for it seems to have inspired "Valley of Song." This song is included and is sung by the men's chorus at the beginning of Act III.

This will be the sixth production that the Hastings Light Opera Company have staged, the previous productions being Gilbert and Sullivan operettas. The success that the company has enjoyed with previous shows has encouraged them to embark on a more ambitious work. In keeping with the Company's aim of performing bigger and more substantial Light Operas "Valley of Song" was chosen as being most suited to the resources of the Company, and one which, we feel, will be favourably received by the Theatre going public.

It is with great pleasure that we bring our 1966 production to you, and we thank you for the support you have given to us in the past.

# HASTINGS LIGHT OPERA COMPANY

(Incorporated)

A member of the New Zealand Federation of Operatic Societies

---

## Officers 1966

**Patron:**

HIS WORSHIP THE MAYOR OF HASTINGS, R. V. GIORGI

**President:** N. FIPPARD.

**Vice-President:** J. LAWSON

**Hon. Secretary:** ELIZABETH LOWE

**Hon. Treasurer:** E. REAY

**Committee:**

MRS. M. BRADY, MRS. F. MURRAY, MRS. S. REAY, D. WILLIAMS, B. MURRAY, J. LINDSTROM

**Hon. Auditor:** S. CUSHING

**Hon. Accountant:** G. FRAZER

---

The Hastings Light Opera Company cordially welcomes you to this, its sixth production. Your part in it is as important as anybody's, and we hope that the performance will reward your coming.

Members, like audiences are important people to any amateur group and this company has vacancies for more. The annual membership fee is £1/1/0 and privileges include two free seats, together with unlimited preferentials, and participation in social activities.

Would those interested please contact the Hon. Secretary, Box 895, Hastings.

**Previous Productions—**

1961 PATIENCE.  
1962 THE GONDOLIERS.  
1963 THE MIKADO.  
1964 IOLANTHE.  
1965 THE PIRATES OF PENZANCE.



NAOMI JAGGER



PETER MACKIE



BETTY McDONALD



OWEN KIRKER



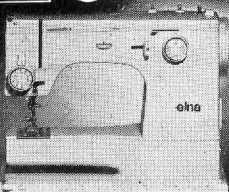
MARIE WENLEY



CARL JAMIESON

quiet elegance — unrivalled strength —  
created with you in mind

**new elna**



designed by women . . . for women  
to give **total** performance!

Sales and Service.

## PARKER SEWING ACCESSORIES

For ALL SEWING SUPPLIES

302 E HERETAUNGA ST.  
HASTINGS

Repairs to ALL MAKES  
of SEWING MACHINES

PHONE 86 346.

# PRODUCTION PERSONNEL

PRODUCER	- - - -	James Morgan.
MUSICAL DIRECTOR	- - - -	Cecil Fitzwater.
OFFICIAL ACCOMPANIST	- - - -	Betty Hague.
PRODUCTION MANAGER	- - - -	John Lindstrom.
WARDROBE MISTRESS	- - - -	Frances Murray assisted by Margaret Perry, Mrs. D. Hamilton, Gail Walker, Penny Waddel, Margaret Moore and K. Whittle.
PROPERTIES MISTRESS	- - - -	Sybil Reay.
STAGE MANAGER	- - - -	Derek Belcher.
HOUSE MANAGER	- - - -	Jack Hannon.
MAKE UP	- - - -	Judith Wellwood, Carol Pascoe, Lorraine Mildon, Brenda Reay, Judith Webb.
ELECTRICIAN	- - - -	John Henderson.
PROGRAMMES	- - - -	John Lindstrom.
LIBRARIAN	- - - -	Maureen Brady.
ADVERTISING	- - - -	Russell Kirkby and John Lindstrom assisted by members of the Company.
FRONT OF HOUSE STAFF HASTINGS	-	Lois Reefman, Bobbie Gamble, Diane Rosser, Anne Symonds, Lynley Hooper, Frank Melling, Eric Reay, Valerie Geddes, Sandra Longworth, Helena Hannah, Maureen Kemp.
STAGE PERSONNEL	- - - -	Cedric Wright, John Henderson, B. McDonald, Ian Gordon, Ken Moore, John Menzies, George Musson and Garry Jansen.

## MUSICAL DIRECTOR

### CECIL FITZWATER.

Napier born Cecil Fitzwater gained his letters for music while in his early twenties. He had mastered the violin, could play the piano, and was a solo cornetist in brass bands. He has been choirmaster and band conductor in Wellington, Auckland, and Hawke's Bay, and has also been Musical Director for the Napier Frivolity Minstrels for the past four years.

In the capacity of Musical Director for "Valley of Song" he has been called upon to assemble and train the orchestra, as well as rehearse the principal singers and chorus, and his wide experience has enabled him to bring a high standard to this production. We know he has enjoyed the work involved even if there were times when he was tempted to put his baton to an unusual use.



# H. I. DIMOCK LTD.

Shop Equipment Specialists

Typewriters  
Portable and Standard  
Cash Registers  
Adding Machines  
Electric Slicers  
Scales  
Coffe Grinders  
Butchers Equipment etc.



Authorised

Agents for Superb "Olympia" Portable and Standard Typewriters  
Built in West Germany by the World's largest typewriter factory.

Your inspection welcomed at our showrooms:

320 Heretaunga Street East, Hastings.  
(Opp. H.B. Electric Power Board)

All makes of Typewriters serviced and repaired.

**H. I. DIMOCK LTD.**

(Phone 85 601)

Branches throughout New Zealand.

SPECIALISTS IN DECIMAL CURRENCY MACHINES.

## ACCOMPANIST

### BETTY HAGUE.

Mrs. Betty Hague is widely known throughout Hawkes Bay as a pianist and organist. She is the organist for St. Patrick's Church, Napier, and also official accompanist for the Napier Frivolity Minstrels. As second accompanist with the Napier Operatic Society she has gained considerable experience in musical productions, and in welcoming her to our midst we would like to express our sincere appreciation for the contribution she has made to the success of "Valley of Song".



# DRAMATIS PERSONAE

LILY MORGAN (The Valley's star soprano & Mrs. Brewster's Secretary and protegee	- - - - -	Naomi Jagger
NAN BREWSTER (A wealthy widow)	- - - - -	Marie Wenley
OLWEN JONES (Mrs. Brewster's Housekeeper and friend)	- - -	Betty McDonald
MARIA (An Italian servant girl)	- - - - -	Betty Hunt
DAVID EVANS (Conductor of Welsh village choir)	- - - - -	Carl Jamieson
GWILIM (Mrs. Brewster's handy man-factotum)	- - - - -	Peter Mackie
RICARDO FAVERO (A cosmopolitan charmer)	- - - - -	Owen Kirker
HUGH GRIFFITHS (Store-manager and choir member)	- - -	John Lindstrom
Reporter (Local paper representative)	- - - - -	Peter Brown
GAUTHIER (An Embassy official)	- - - - -	Jim Lawson
ACROBAT	- - - - -	Glenda Smith

CHORUS OF CHOIR MEMBERS, CARABINIERI, VENETIAN GIRLS, CARNIVAL REVELLERS, BRITISH SOLDIERS, etc.

Glenyse Reynolds, Marjorie Bewley, Angela Houlahan, Rachel Barcham, Tessa Ruffell, Jennifer Louie, Dorothy Boxall, Margaret Boxall, Dianne Coe, Christine Unverricht, Mary Koorey, Glenda Smith, Loraine Graham, Wendy Weston, Dianne Gillies, Margaret Donovan, Sara Holderness, Pauline Gestro, Penny Waddell, Romaine Butterfield, Rachel Morgan, Florence Howarth, Juliet Knowles, Karyn Hague, Lois Hart, Leith Lochhead. Bob Murray, John Lindstrom, David Holmes, Peter Brown, Owen Kirker, Bill Ruffell, David Reefman, Greg Jenkins, Michael Koorey, Logan Cartwright, David McDonald, Derek Rolls, Alan Ovenden.

PROMPT: Bobbie Gamble.

CALL BOYS: Bruce Murray, Keith Broomhead.

## MEMBERS OF THE ORCHESTRA:

CONDUCTOR: Cecil Fitzwater.

PIANO: Betty Hague.

VIOLINS: Enid Dunn, Anita Rae, Adrienne Norris.

CELLO: Joan Palmer, Rhona Woodcock.

BASS: Leon Speakman.

FLUTE: Alan Clarke.

CLARINET: Owen Knight.

FRENCH HORN: Mike Winter.

TRUMPETS: Stewart Boston, Roy Robinson, John Sutton.

TROMBONES: Doug Robinson, David Kitt

TYMPANI & DRUMS: Jock Seton.

# VALLEY OF SONG

by IVOR NOVELLO

---

## Musical Contents

### Overture

#### ACT I

1. Opening Act I. "Cambria" (Chorus).
2. "Nothing Over Sixpence" (Nan, Olwen, Gwilim and Reporter).
3. "I Know a Valley" (Lily, David and Chorus).
- 4.\* "What is it Now?" (Gwilim).
- 4a. "Those were the Days" (Olwen and Gwilim)
5. "Sing!" (Gwilim and Chorus).
6. Finale Act I. (Ensemble).

#### ACT 2

7. Opening Act II. "Step by Step" (Maria, Gwilim and Chorus).
8. "Where do we go from There?" (Maria, Nan, Olwen and the Girls)
- 9.\* "Look in my Heart" (Lily).
- 10.\* Reprise: "Look in my Heart" (Lily, Nan, Olwen, Ricardo and Gwilim).
- 10a.\* Close of Scene.
11. "Lanternlight" (Ricardo and Chorus).
- 12.\* "Carnival in Venice" (Chorus).
13. Ballet (Dancers and Chorus).
- 13a.\* Entrance of Lily.
- 13b.\* Waltz Music.
14. "The Heart of the Melody" (Nan and David).
15. "Rainbow in the Fountain" (Lily and Chorus).
16. Finale Act II (Ensemble).

#### ACT III

- 17.† Opening Act III "Soldier Lad" (Olwen and Men).
18. "The Whole World Over" (Maria and Gwilim).
- 18a.\* Melos.
- 19.\* "The Carol Singers" (Chorus).
- 19a. Carol, "Bundle in the Hay" (Chorus).
20. Melos and Reprise, "Cambria" (Chorus).
21. Finale Act III (Full Company).
- 22.\* Curtain Call Music "Look in My Heart" (Full Company).
23. Play-out.

\* Composed by Ronald Hanmer.

† "Keep the Home Fires Burning" music by Ivor Novello, words by Lena Guilbert Ford, by kind permission of Ascherberg, Hopwood & Crew Ltd.



# The Story

## ACT I—The Entrance Hall, Brewster Towers.

Evening, Summer, 1913.

The Cromidris choir has gathered at the home of Mrs. Nan Brewster, a wealthy widow, owner of a chain of stores. Mrs. Brewster is giving a party to celebrate the 25th Anniversary of the founding of Brewster's stores, and as patron of the choir, has invited them to the party, where she intends making a special announcement. A reporter from the local newspaper "The Swansea Argus" is also attending, and gains much useful information for an article he is writing on Brewster's Stores.

Lily Moran, star soprano of the choir, and David Evans the conductor are joined by the choir in singing one of the songs that David has composed for Lily, "I Know a Valley" and the company chide David for his modesty, when he attempts to belittle his own efforts.

Gwilim, Mrs. Brewster's handy-man and factotum sings "What is it now?", in which he says "Worrying about things never does anyone any good." Olwen Jones, Mrs. Brewster's housekeeper and friend joins Gwilim in a nostalgic duet "Those were the days" in which they recall the wonderful bygone days when the choir was in its heyday.

Gwilim compares the recreations of other countries with that of Wales, and the choir agree that, as Welshmen seem to confine their recreational activities mainly to singing, they may very well come out best in the long run.

Mrs. Brewster makes the surprise announcement that she intends to retire from business and go abroad. She will appoint Hugh Griffiths her local branch manager to take up the position of General Manager of Brewster's Stores. She has decided to go to Venice "The most beautiful City in the World" and wishes to take her entire household staff including Lily with her.

Lily is overjoyed at hearing the news, and as she has always dreamed of spreading her wings and travelling to distant lands, to her, the very name of Venice has magic in it.

David is dismayed at Lily's desire to leave the Valley, as he is in love with her, and wishes to marry her, but his tender appeal to her to remain at home fails to dissuade her. The act closes with the choir singing a happy farewell to Mrs. Brewster and her staff.

## ACT II—Scene I. The Palazzo Felice, Venice.

Morning—Spring, 1914.

The scene opens in Venice with a colourful parade of the Italian Carabinieri in which everyone joins. Maria, an Italian servant girl is very taken with Gwilim, but complains to Nan Brewster and Olwen Jones, that he is not as affectionate as she would like, and these three, in the song "Where do we go from there" join the girl's chorus in discussing the shortcomings of men in general.

Lily in her aria "Look in my heart" sings of the happiness she has found since coming to Venice. She has had a wonderful chance of furthering her singing career by obtaining a leading part in a big musical production in Venice, and has also met and been courted by a dashing Italian Count Riccardo Favero. Lily confides that it all seems so perfect, she is afraid that it seems too good to last, but is reassured by the others when they combine to sing a repeat of "Look in my heart".

## SCENE II — The Same Night.

It is evening in Venice on a warm starry night. The population is in a gay carnival mood, and Riccardo and chorus sing a romantic song about "Lanternlight and Gondolas," and all sing and dance in the street.

During this time the big musical show has had its opening night and in the leading role Lily has been an outstanding success. She is escorted triumphantly on to the scene by Riccardo, and then invites the revellers to a grand masquerade ball later in the evening. During the ball, David, who has made a surprise trip from the Valley in Wales dances with Lily and then taking off his mask reveals himself. Lily is surprised and delighted to see David, but he having seen her with Riccardo and heard of her success is much disillusioned and inclined to be bitter. In a duet with Nan, consoles himself by saying, that although he has lost Lily he still has the songs he wrote for her.

The guests who by this time have refreshed themselves with champagne and supper, in the Palazzo, arrive on the scene and ask Lily to sing her song "Rainbow in the Fountain" again for them. She consents and all join in the chorus.

Nan Brewster as Lily's friend and confidante has many misgivings about the dashing and flamboyant Count Riccardo that Lily has fallen in love with, and as Lily is about to become engaged, feels that she should make some discreet enquiries. In response to these enquiries an Embassy Official, Gauthier, advises that Riccardo is nothing but an adventurer and a schemer, who makes his living by preying on wealthy and talented women. Riccardo has seen that Lily is about to become a star, and wishes to marry her in order to share in her future wealth and glory.

In a very tense scene Nan and David tax Riccardo with the truth, and Lily enters just as Riccardo admits that he was not in love with her, but was marrying her for his own personal gain. Poor Lily finds that the bottom has dropped out of her world, and although all concerned try to restore her spirits by asking her to sing again, she breaks down and rushes from the scene.

## ACT III—Scene I—The Morning Room, Brewster Towers.

Winter — 1914.

War has broken out, the German war machine is advancing throughout Europe. Nan Brewster together with Lily and the rest of the Household staff have returned to Wales. Brewster Towers has been turned into a Hospital and convalescent home to care for the wounded soldiers returning from the front line. Olwen standing by the window sings a sad farewell to the men of the Valley, who are marching away to the war. And as they march, they sing the song that was in everyone's hearts, "Keep the Home Fires Burning".

Maria who has returned from Venice with Mrs. Brewster, is growing a little tired of waiting for Gwilim to name the day when they will be married. Gwilim will not take the plunge until the war is over, and in a duet with Maria "The whole World Over" asks her to be patient and that waiting can only fan the flame.

Soon after this, Gwilim, most unhappily tells Lily that David is missing in action and is presumed dead. He adds that Hugh Griffiths was with David at the time and Hugh saw David fall down, just before he was hit himself. Lily and Nan are shocked at hearing the news but endeavour to retain a last ray of hope.

## SCENE II — Christmas Eve, Brewster Towers.

The members of the sadly depleted choir visit Brewster Towers to sing Christmas carols, and bring a little of the spirit of Christmas to the wounded men. After singing their carols, Olwen announces that a new batch of invalids have just arrived back from France. To the great joy of all David appears with them, and although wounded is safe home again.

Since returning from Venice Lily had been thinking more and more of David and the news of his possible death at the war, had made her realize that it was really David that she loved.

All are happily re-united and the entire company join in singing the song David had written especially for Lily "I Know a Valley".

*There's no better piano value in New Zealand!*

# LIEDERSTROM PIANOS

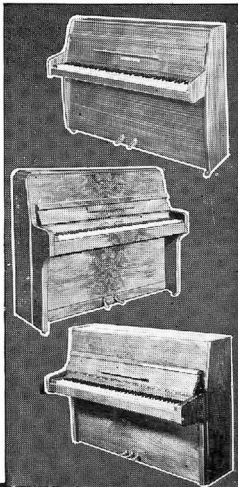
**EXCLUSIVE TO BEGG'S**

The price isn't the reason that the Liederstrom range of pianos has made such an impact on New Zealand piano buyers (although it must have been a great inducement). No, the simple fact is that here are three quality models with styling, tone and finish, that almost defy competition. Begg's New Zealand's leading Piano House for over 104 years make this recommendation to you . . . call in today to any of our piano lounges and see and hear for yourself all three wonderful models. And while you're there ask about the prices — you'll be most pleasantly surprised.

*You Buy the Best at —*

# BEGG'S

**BIGGEST IN MUSIC — BEST IN APPLIANCES**



#### LIEDERSTROM HANOVER

An attractively styled piano (height 3ft. 5ins.) designed to meet modern requirements. The Hanover possesses a remarkable tone and will appeal to the most discriminating pianist. It is superbly finished in hardwearing polyester and is available in Mahogany, Paldao or Walnut. From £216 cash or £22 deposit and 43/9 weekly.

#### LIEDERSTROM ROYALE

Another outstanding example of modern piano styling from Begg's. The distinctive Royale has a 7 octave range and produces a superlative tone. It has a full iron frame and the keyboard is of quality, non-stain Tuskitite. The piano is beautifully finished in hardwearing polyester. Priced from £222 cash or £23 deposit and 44/11 weekly.

#### LIEDERSTROM MODEL 588

Compare this piano with other brands of comparable price. You won't buy better. Quality construction and technical features that comply with the highest standards. It has 7 1/2 octaves, overstrung under damper action, plastic keys and a quality of tone that has to be heard to be appreciated. Its distinguished, modern styling graces any setting and the rich Mahogany or Walnut veneer finish gives added appeal. Astounding value for only £197 cash or 20/- deposit and 40/- weekly.

LP6/2



WARDROBE MISTRESS  
FRANCES MURRAY



PROPERTIES MISTRESS  
SYBIL REAY



CHORUS OF GIRLS.

The Very Latest in Musical Equipment.

## PHILIPS HI FI STEREO



Introducing an entirely new and delightful range of  
PHILIPS Stereo Record Playing Units. Some of the  
features are:—

- \* Basic Unit consists of Transistor Stereo Amplifier, Record Player on Base and two separate Speaker Enclosures.
- \* All components manufactured in attractive contemporary style.
- \* No installation required, immediately ready for use.
- \* Excellent tonal performance providing amazing Extended Range Sound.
- \* A choice of 4 outfits priced from £66/10/0 to £82/10/0.

Call for a Demonstration.

# SUTCLIFFES LTD.

MODERN MUSIC STORE, HASTINGS.



PETER BROWN



BETTY HUNT



JIM LAWSON



GIRLS OF THE CHORUS



CARNIVAL TIME

## ACKNOWLEDGMENTS

The Company gratefully acknowledges the assistance given by:

Mr. Keith Brazier for Painting Scenery.

Miss D. Lindstrom of Wellington for designing posters and programme cover.

Mr. J. Stewart for use of premises to build scenery.

The Hastings City Council, The Hawke's Bay Herald-Tribune, The Daily Telegraph Ltd.  
Bryant and Gadd Ltd. Process Signs. Lovell-Smiths.

The Advertisers in this programme.

S. E. Morgan and Sons. Harnish & Jordan. Mr. Darby.

Opera Technique, Wellington. Tin Hat Club, Hastings.

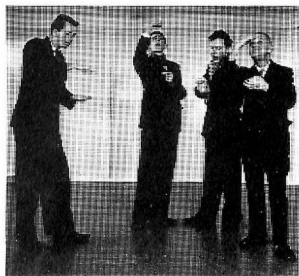
W. E. Pope and those people who in their various capacities contributed so much to the success of this production.



ENGLISHMEN ADORE THEIR CRICKET.  
Alan Ovenden, David McDonald, David Reeman, Derek Rolls.



THE JAVANESE CLIMB COCO TREES  
Bob Murray, David Holmes, John Lindstrom.



FRENCH MEN DINE ON SNAILS & WINE  
Greg Jenkins, Michael Koorey, Logan Cartwright,  
Bill Ruffell.

# MEMBERSHIP LIST

## ACTIVE:

### Messrs:

D. Bacon	J. Hannon	P. A. E. Mackie	D. Reefman
P. Brown	D. Holmes	J. Morgan	D. Rolls
L. Cartwright	G. Jenkins	B. Murray	W. Ruffell
C. Catton	N. Kirky	R. Murray	E. Reay
A. Easton	R. Kirky	J. R. McKeown	D. Williams
D. Fear	O. Kirker	D. McDonald	D. Wilson
C. Fitzwater	M. P. Koorey	A. Ovendon	N. Wolf
P. Gillespie	J. Lawson	N. Oliver	A. Young
I. Gordon	J. Lindstrom	B. Pattullo	K. Moore

### Misses:

R. Barcham	M. Donovan	M. Koorey	M. Perry
M. Bewley	L. Graham	S. Lindstrom	J. Proctor
C. Bishop	D. Gillies	P. Moore	M. Proctor
D. Boxall	P. Gestro	Leith Lochhead	B. Reay
M. Boxall	L. Hart	J. Louie	T. Ruffell
B. Bristol	M. Hebley	E. Lowe	E. Smith
M. Brown	S. Holderness	H. McKay	G. Smith
R. Butterfield	A. Houlahan	S. McKay	C. Unverricht
J. Caulton	K. Hague	L. MacGregor	W. Weston
D. Coe	J. Knowles	R. Morgan	A. Wood

### Mesdames:

M. Bell	F. Howarth	S. Reay	D. Unsworth
M. Brady	N. Jagger	G. Reynolds	P. Waddell
S. Brown	F. Murray	A. Stainer	J. Williams
M. D. Gamble	B. McDonald	M. Moore	E. Young
B. Hague			

## SUBSCRIBING:

### Messrs.

G. Armitage	N. Fippard	D. J. McDonald	F. H. Smith
Hugh A. A. Baird	N. Frizzell	H. A. McKeesick	R. Stratford
C. J. Bartlett	J. R. Fussell	Dr. H. G. McPherson	B. E. Taylor
A. Bewley	F. Geor	A. Nankervis	H. B. Tobin
M. Brooker	R. S. Gray	A. E. Ormandy	S. G. Walter
E. Burrell	G. Hartley	S. Parker	A. Warren
K. Callingham	C. Heald	L. Ross	J. Westerman
R. W. Chaplin	R. Haggerty	B. E. Salt	R. Wheeler
S. Cushing	C. Henderson	B. R. Salt	C. J. Wright
A. Dimock	A. T. Howlett	W. Schroder	H. Wood
Dr. H. Earl	F. Melling	J. Seton	T. Hemmingway

### Mesdames:

M. Beamish	M. I. Giorgi	H. W. Louie	P. Scherf
Mrs. Brooker	N. L. Godsiff	C. P. Lowe	I. Sisson
S. Callingham	Mrs. Hedley Harvey	K. M. Marriott	A. E. Smith
M. F. Clark	J. Henderson	S. E. Morgan	W. N. Smith
T. Conway	J. Holder	N. Pacey	M. Spence
C. Coleman	B. Hunt	V. Plank	C. B. Wilson
L. Corbett	T. Jenkins	N. Rohrs	E. Wilson
L. Cowlick	Mrs. Leonard		

### Misses:

R. Anderson	J. M. Graham	S. Longworth	R. Ruffell
W. D. Beale	A. Grundy	J. Longworth	N. D. Tanner
V. Beattie	P. Lean	R. Morgan	L. Westerman

*Travel* by **NEWMAN'S**  
COACH LINES

**FIVE SERVICES DAILY**

To Palmerston North, Hutt Valley  
and Wellington



**CHARTER COACHES**

Our 36 SEATER Luxury Coaches (shown above) are available at  
most reasonable rates for contract work

**ENTERTAINMENT - RACE MEETINGS**

We regularly run Special Trips to Overseas Theatrical Companies etc.,  
that are not visiting Hawke's Bay.

We arrange theatre seats and meals  
SPECIAL TRIPS are made to MOST RACE MEETINGS

For Further Information Contact:—

**NEWMAN BROS. (N.I.) LTD.**

NEWMAN'S/N.A.C. BUILDING  
Cnr. Railway Road and Eastbourne Street, Hastings.  
— TELEPHONE 89 096 —