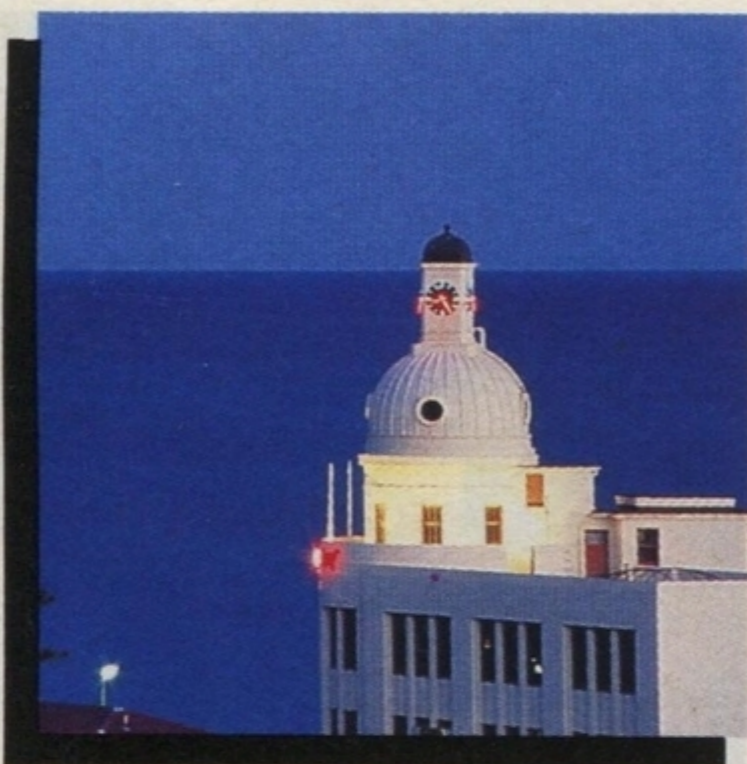


NAPIER AND THE HAWKE'S BAY AREA



ART DECO WALKS

In Napier.. the Art Deco City..

Napier, ravaged by earthquake and fire in 1931, was rebuilt in the heyday of the Art Deco style. Enjoy the sophistication of the Jazz Age in one of the world's youngest historic cities, beautifully set on the shores of the South Pacific.

Palms and Norfolk Pines in 1930's style landscaping enhance the Art Deco, Spanish Mission and Classical Modern architecture.

In between wining and dining in Art Deco restaurants and bars, enjoy the Art Deco Trust's popular guided Walking Tours on Sundays and Wednesdays (more often, or daily in summer). Bus tours and evening "Wineglass Wanders" are also available, and every February, the city celebrates its famous "Art Deco Weekend".

Guided walking tours commence at 2pm, and cost Adults; NZ\$5.00, children (under 15) free. With Qantas Connections, you receive a 20% discount on all walking tours (pay only NZ\$4.00), plus.. receive a 10% discount on all purchases at the Trust's Art Deco shop in Hastings Street.

Cardholder Must PAY DIRECT:

Art Deco Trust
Hastings Street, NAPIER.
For reservations and information,
Tel: (06) 835 0022

**SAVE 20% ON GUIDED WALKS
AND 10% ON PURCHASES WITH
QANTAS CONNECTIONS**



HAWKE'S BAY MUSEUM

The region's major art and history museum

The Hawke's Bay Museum tells the fascinating story of 150 years of European settlement in this beautiful part of New Zealand. Favourites with visitors are the audio-visual presentation "Great Hawke's Bay Earthquake" and the exhibition "Newest City on the Globe" - a record of the post-earthquake reconstruction of Napier and the Art Deco style which makes it unique.

The arts and crafts of the local Maori people are represented in the New Zealand Tourism Award winning exhibition "The Treasures of Ngati Kahungunu".

Long and short term exhibitions of the fine arts, crafts and decorative arts are regularly mounted. The Museum, which is housed in an impressive complex, includes a theatre/cinema, Museum shop and historical library.

Open daily (except Christmas Day), from 10.00am - 5.00pm, admission is NZ\$2.00. (Child under 15 free). With Qantas Connections, you pay only NZ\$1.50 - save 25%! Plus.. also receive a 10% discount on all purchases in the Museum Shop!

Cardholder Must PAY DIRECT:

Hawke's Bay Museum
9 Herschell Street, NAPIER
Tel: (06) 835 7781

**SAVE 25% ON ADMISSION AND
10% IN MUSEUM SHOP WITH
QANTAS CONNECTIONS**



HAWKE'S BAY EXHIBITION CENTRE

Hosting local, national, and international exhibitions...

The Hawke's Bay Exhibition Centre is Hawke's Bay's premier touring exhibition venue, hosting local, national and international exhibitions of the fine arts and crafts.

Operated with the Hawke's Bay Museum in Napier (see separate entry on this page), by the Hawke's Bay Cultural Trust, the Exhibition Centre has recently been extensively modernised and upgraded. The Centre now incorporates the "Centre Cafe", (featuring some of the best regional dining and wines) and its own gift shop.

Located close to Hastings' commercial area, the Exhibition Centre is open every day (except Christmas Day); 10.00am to 5.00pm on weekdays, and 12 noon to 5.00pm on weekends and holidays.

Admission is NZ\$2.00, (children under 15 years free), but with Qantas Connections, you pay only NZ\$1.50! Plus... you'll also receive 10% discount off all purchases in the Exhibition Centre Museum Shop when you show your Qantas Connections card.

Cardholder Must PAY DIRECT:

Hawke's Bay Exhibition Centre
Eastbourne Street
HASTINGS
Tel: (06) 876 2077.

**SAVE 25% ON ADMISSION AND
10% IN MUSEUM SHOP WITH
QANTAS CONNECTIONS**



TRELINNOE PARK - A GARDEN OF LANDSCAPE

Scenic gardens.. peace and tranquillity

Napier, in Hawke's Bay, enjoys some of the best weather in New Zealand... sunshine, blue skies and mild winters. This climate allows a wide botanical range.

Trelinnoe Park is 25 acres and has an emphasis on landscaping. While inspired by the traditional English garden, it is very much a New Zealand garden, using many indigenous trees, shrubs and ferns and a focus on distinctive New Zealand countryside. Its diversity of foliage and flower provides interest throughout the seasons.

Nestled among the trees you'll find Fiona's Tea House offering home made delights!

Open 10.00am - 5.00pm, Thursday through Sunday. Closed mid May - mid August.

Credit Cards: VS MC

Cardholder Must BOOK AND PAY DIRECT:

Trelinnoe Park
NAPIER, Tel: (06) 834 9703.

Admission Per Person	1 JAN - 31 DEC 93	
	Normal Price	You Pay
Adults	4.50	3.50
Price includes 12.5% GST.		

**SAVE 22% WITH
QANTAS CONNECTIONS**

NAPIER AND THE HAWKE'S BAY AREA



THE STABLES COMPLEX Earthquake "31" and Waxworks Museum

London may have Madame Tussaud's but Napier has its own fascinating Waxworks located in an original and historic old stable moved from Taradale. The museum area upstairs, and the colonial street behind, feature wax and action figures in colonial trade and commerce situations. Step back into New Zealand history and see what life was like last century.

Earthquake! Include a visit to Earthquake '31' and experience the events of Napier's 1931 earthquake... as if you were there!

Open 7 days 9.00am - 5.00pm.

With Qantas Connections, save up to 25% on entrance fees!

Cardholder Must BOOK AND PAY DIRECT:

Stables Museum and Waxworks
321 Marine Parade, NAPIER
Tel: (06) 835 1937.

Per Person Admission	1 JAN - 31 DEC 93	
	Normal Price	You Pay
Adult	6.00	4.50
Child	2.50	2.00

Family concessions available.
Credit Cards: AE DC VS MC

**SAVE UP TO 25% WITH
QANTAS CONNECTIONS**



HAWKES BAY AQUARIUM AND MARINELAND OF NEW ZEALAND New Zealand's only marine zoo..

Two of New Zealand's most popular marine attractions! Marineland has 2 shows daily (10.30am and 2.00pm), featuring dolphins, sea-lions and leopard seals. After the show, view the dolphins and sea-lions and visit the native sea bird enclosure.

Hawke's Bay Aquarium... sharks, rays and fish from New Zealand's coastal waters swim amongst towering rocks and a shipwreck right in front of your eyes. An amazing variety of sea life.. from sea horses and sharks to tuatara. Visit at 3.15pm and you can watch a diver hand feeding the fish.

Aquarium open daily from 9.00am - 5.00pm and Marineland 10.00am - 4.30pm.

Cardholder Must BOOK AND PAY DIRECT:

Marineland of New Zealand and
Hawke's Bay Aquarium
Marine Parade, NAPIER
Tel: (06) 835 7579.

Admission Per Person	1 JAN - 31 DEC 93	
	Normal Price	You Pay
Adult Marineland	7.50	6.75
Adult Aquarium	6.50	5.85
Combined visit adult	14.00	11.20

Children pay 50%. Includes 12.5% GST.

**SAVE UP TO 20% WITH
QANTAS CONNECTIONS**



KAMAKA POTTERY Award winning potters

Japanese style and method have had a strong influence in the work of Hastings potters Bruce and Estelle Martin since a visit to Japan in 1978. It was on this trip that the Martins discovered the "anagama" method of firing pots, a technique that dates back to 11th Century Japan. Pots fired in anagama kilns are unique. Unlike most other pottery, the pots do not have a coating or glaze applied before they are stacked into the kiln. Instead they are fired for 8 to 10 days so that the ash and flame produce an unusual natural finish.

Enjoy the landscaped grounds and the Anagama display in the Martin's workshop. They will explain the method of firing and show you their kiln - very few of these kilns now exist anywhere in the world, making these pots rare and unique.

The Martins offer you a generous 20% discount off all pottery purchased when you show your Qantas Connections card (excluding items already discounted).

Cardholder Must PAY DIRECT:

Kamaka Pottery
Valentine Road, Bridge Pa
HASTINGS
Open 9.00am - 5.00pm, please phone ahead: Tel: (06) 879 9555.

**SAVE 20% WITH
QANTAS CONNECTIONS**



HAPUA HOMESTEAD Real Kiwi hospitality

Picture this... the door opens to a blazing log fire.. a wood-panelled room wall-papered with family photographs, classic paintings and generations of memorabilia. A silver tray is proffered with your choice of drinks.. you are shown to your room with its double bed and fresh flowers.

Hosts Dinah and Anthony Williams have been sharing their comfortable 80 year old homestead with many people for over 15 years. Enjoy breakfast on the sunny terrace, a log fire in the drawing room and relax in the swimming pool. The tariff includes accommodation, all meals, liquor and morning and afternoon tea.

Hapua Homestead... a friendly base from which to explore beautiful Hawke's Bay.

Cardholder Must BOOK AND PAY DIRECT:

Hapua Homestead
RD 14, Havelock North, HAWKE'S BAY
Tel: (06) 874 7623. Fax: (06) 874 7623.

Per Person Per Night	1 JAN - 31 DEC 93	
	Normal Price	You Pay
Adult	80.00	64.00
Child (under 12)	40.00	32.00

Price includes 12.5% GST.
No credit card facilities.

**SAVE 20% WITH
QANTAS CONNECTIONS**

ROTORUA, BAY OF PLENTY, EAST CAPE, HAWKE'S BAY AND TONGARIRO



KAMAKA POTTERY Award winning potters

Japanese style and method have had a strong influence in the work of Hastings potters Bruce and Estelle Martin since a visit to Japan in 1978. It was on this trip that the Martins discovered the 'anagama' method of firing pots, a technique that dates back to 11th Century Japan. Pots fired in anagama kilns are unique. Unlike most other pottery, the pots do not have a coating or glaze applied before they are stacked into the kiln. Instead they are fired for 8 to 10 days so that the ash and flame produce an unusual natural finish.

The Martins' work is of such a fine standard that they have been invited to exhibit in galleries throughout New Zealand, at the Vancouver Expo and in Osaka.

Enjoy their 10 acre landscaped grounds and the Anagama display in their workshop. They will explain the method of firing, show you their kiln - very few of these kilns now exist anywhere in the world, making these pots rare and unique.

The Martins offer you a generous 20% discount off all pottery purchased when you show your Qantas Connections card.

CONTACT DIRECT:

Kamaka Pottery,
Valentine Rd, Bridge Pa,
Hastings.
Tel: (06) 879 9555.

**SAVE 20% WITH
QANTAS CONNECTIONS**



HAPUA STATION Real Kiwi hospitality

Picture this....the door opens to a blazing log fire, a wood-panelled room, wall papered with family photographs, classic paintings and generations of memorabilia. A silver tray is proffered with your choice of drink, you are shown to your room with its huge double bed and fresh flowers.

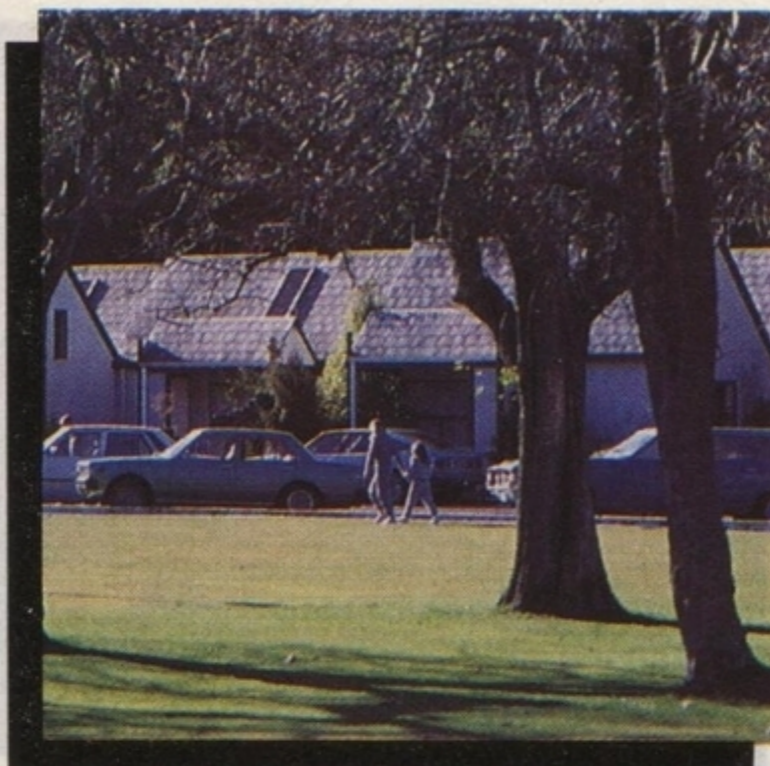
Hosts Dinah and Anthony Williams have been sharing their comfortable 80 year old homestead with many people for over 11 years. Enjoy breakfast on the sunny terrace, a log fire in the drawing room and relax in the swimming pool. Go trout fishing and golfing and take a 4WD trip around the sheep and cattle property. The tariff includes accommodation, all meals, liquor, morning and afternoon tea and sightseeing on the farm.

CONTACT DIRECT:

Hapua Station,
R.D. 14,
Havelock North, Hawke's Bay.
Tel: (06) 835 1623.

	1 JAN - 31 DEC 91	
	Normal Price	You Pay
Per Person Per Night		
Adult	80.00	64.00
Child	40.00	32.00
Price includes GST.		

**SAVE 20% WITH
QANTAS CONNECTIONS**



THC WAIRAKEI HOTEL Located in a geothermal valley

There's tennis, croquet, swimming, horse-riding, jogging and golf, golf at the THC Wairakei Hotel. Renowned for its famous 18-hole golf course, Wairakei offers a challenge to even the most experienced golfing enthusiast.

Close to Lake Taupo and virtually next door to the splendid Huka Falls, Wairakei lies in a picturesque valley. Its rooms have private facilities, tea and coffee making facilities, colour TV, telephone, refrigerator mini bar and a private patio.

The Graham Room restaurant serves dinner, buffet lunch and breakfast and the Fairway Grill offers a bistro and family bar, open for lunch and dinner, Monday to Saturday. A delicious barbecue lunch is served at poolside during summer.

CONTACT DIRECT:

THC Wairakei Hotel,
Highway 1, Wairakei.
Tel: (074) 48021. Fax: (074) 48485.
From Aug,

	1 JAN - 31 DEC 91	
	Normal Price	You Pay
Per Room Per Night		
Villa Room	125.00	100.00
Prices exclude GST.		

**SAVE 20% WITH
QANTAS CONNECTIONS**



LAKELAND MOTOR INN In the heart of the North Island

Lakeland Motor Inn is situated just two miles south of Taupo's main township overlooking the famous Lake Taupo in the heart of the North Island.

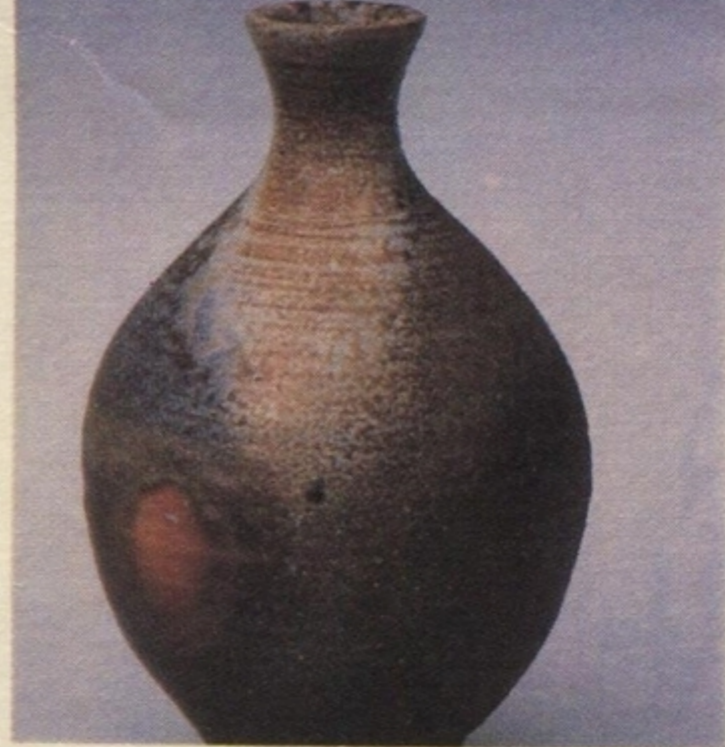
Relax and enjoy the hospitality that Lakeland Motor Inn has to offer their guests - comfortable guest rooms, fully licensed restaurant - they pride themselves on an award winning cuisine at affordable prices. For the energetic Taupo offers you white water rafting, snow skiing, water skiing, paragliding, horse riding and adventure treks, there are also quiet lake cruises and natural thermal pools.

CONTACT DIRECT:

Lakeland Motor Inn,
State Highway 1,
Two Mile Bay, (PO Box 1179),
Taupo.
Tel: (074) 83893. Fax: (074) 83891.
From Aug,
Tel: (07) 378 3893. Fax: (07) 378 3891.

	1 JAN - 31 DEC 91	
	Normal Price	You Pay
Per Room Per Night		
Single/Double	70.00	55.00
Extra Person	15.00	10.00
Price excludes GST.		
Credit Cards: AE DC VS MC		

**SAVE 21% WITH
QANTAS CONNECTIONS**



KAMAKA POTTERY

A touch of Japan

JAPANESE style and method have had a strong influence in the work of Hastings potters Bruce and Estelle Martin since a visit to Japan in 1978. It was on this trip that the Martins discovered the 'anagama' method of firing pots, a technique that dates back to 11th Century Japan.

Pots fired in anagama kilns are unique. Unlike most other pottery the pots do not have a coating or glaze applied before they are stacked into the kiln. Instead they are fired for 8 to 10 days so that the ash and flame produce an unusual natural finish totally unlike normal glazes.

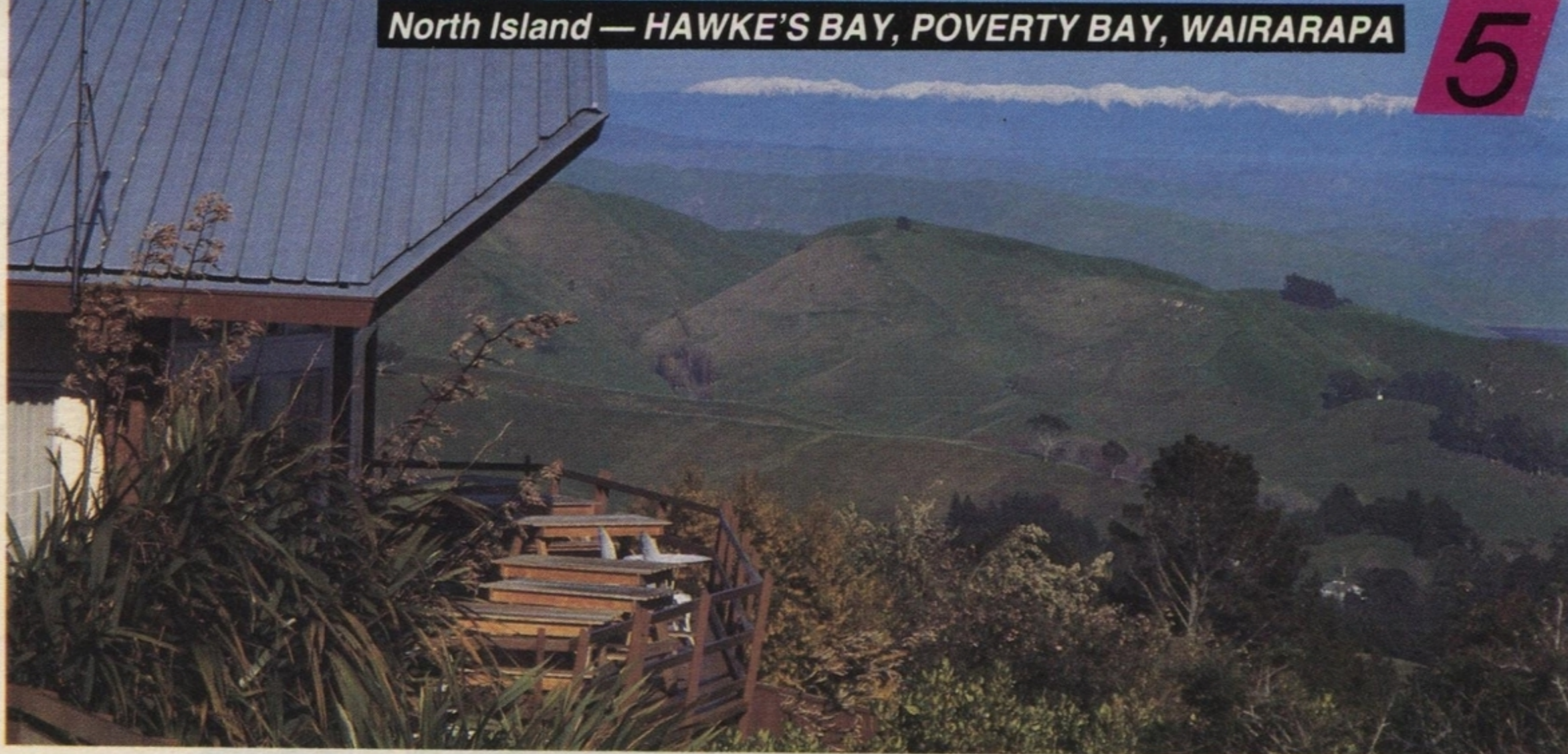
The Martins work is of such a fine standard that they have been invited to exhibit in galleries throughout New Zealand, at the Vancouver Expo and Osaka, Japan. With your Qantas Connections card you can get a generous 20% discount off all pottery purchased when you visit Kamaka Pottery.

Contact Direct:

Kamaka Pottery,
Valentine Rd, Bridge Pa,
Hastings.

Tel: (070) 79 9555.

**SAVE 20% WITH
QANTAS CONNECTIONS**



PEAK HOUSE

PEAK HOUSE RESTAURANT

The best view in Hawke's Bay

NOBODY could argue that Peak House hasn't the best view in Hawke's Bay. It also has food and service to match.

The restaurant is open for lunch and dinner serving some innovative and palate tempting dishes. How about Scallops and Lychees in a Crayfish brandy sauce or Pork Fillets with Orange Marmalade sauce? Or Poached Pears with Butterscotch sauce? Apple and Chestnut crepes?

The restaurant has a BYO licence and opens Wednesday to Monday for lunch; Thursday to Sunday for dinner. It is offering a 10% saving to Qantas Connections members on their lunch or dinner bill — payment by cash or travellers cheques.

Contact Direct:

The Peak House Restaurant,
Peak Road, Te Mata Park,
Havelock North.

Tel: (070) 77 8663.

**SAVE 10% WITH
QANTAS CONNECTIONS**

BREAKAWAY CAMPERS

For the out-of-the-way holiday

GET away from it all and visit the unspoilt places in New Zealand. You can, with Breakaway Campers. These all-weather freedom campers are self-contained with refrigerator and cooking facilities, water tank, toilet, radio, kitchenware,



bedding and linen. They're insulated and fitted with gas heaters. Maps and tourist information of Hawke's Bay area are included.

Breakaway has two types of campervan — a standard 4+2 berth (suitable for a maximum of 4 adults and 2 children) and a 2+2 berth with shower. The vans are powered by economical and comfortable Isuzu diesel units.

Breakaway is based in Napier and Hastings which have direct flights to all the international airports plus bus and train services.

Contact Direct:

Breakaway Campers,
R.D. 11, Hastings.
Tel: (070) 78 8833.

	Normal Price	You Pay
	New Zealand Dollars	
Jan '87	90	79.20-67.50
Feb '87	80	70-60
Mar-May '87	72	63-54

Prices include unlimited kilometres, insurance and GST. No repositioning charges for hires of 21 days or more.

**SAVE UP TO 25% WITH
QANTAS CONNECTIONS**



KAMAKA POTTERY

A touch of Japan

JAPANESE style and method have had a strong influence in the work of Hastings potters Bruce and Estelle Martin since a visit to Japan in 1978. It was on this trip that the Martins discovered the 'anagama' method of firing pots, a technique that dates back to 11th Century Japan.

Pots fired in anagama kilns are unique. Unlike most other pottery, the pots do not have a coating or glaze applied before they are stacked into the kiln. Instead they are fired for 8 to 10 days so that the ash and flame produce an unusual natural finish totally unlike normal glazes.

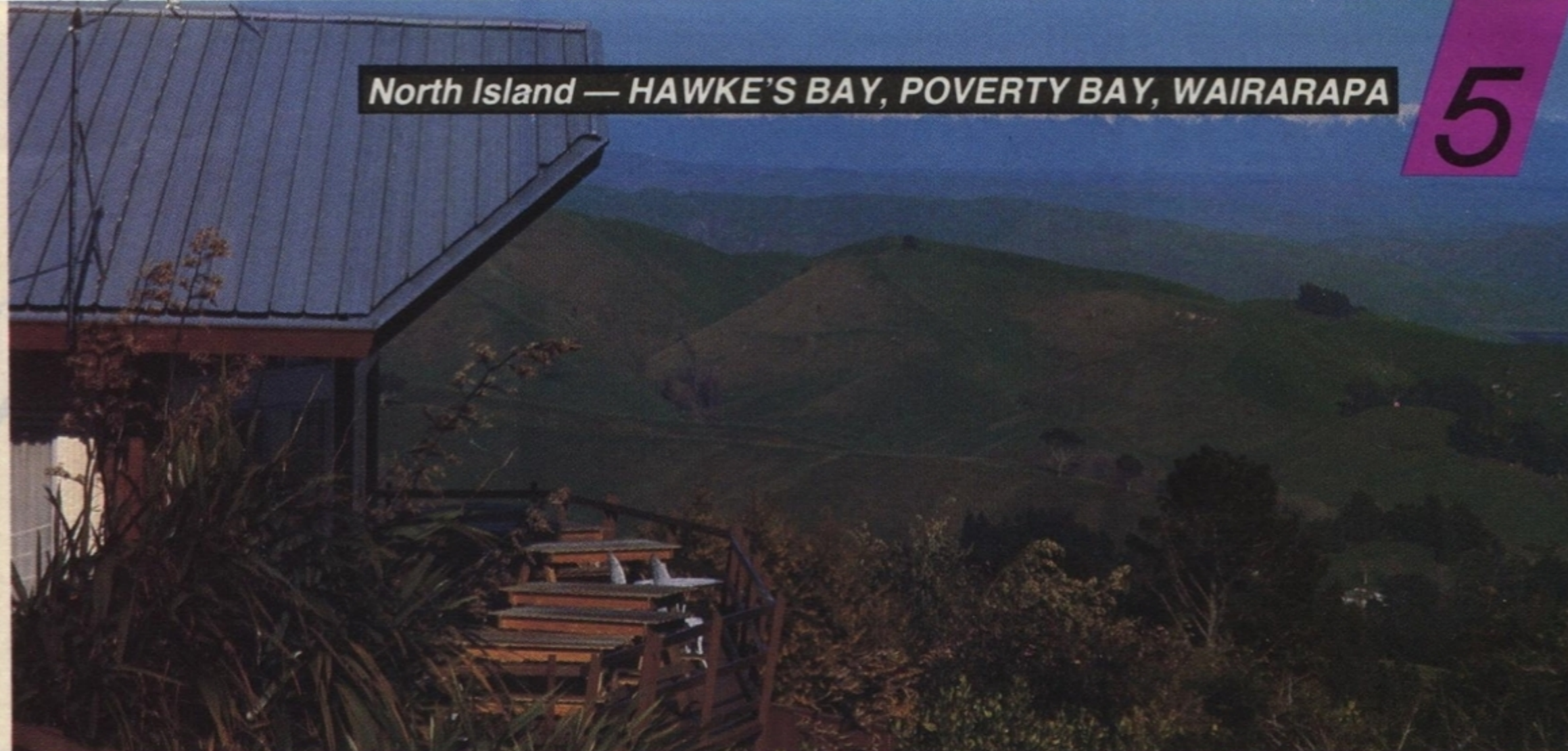
The Martins' work is of such a fine standard that they have been invited to exhibit in galleries throughout New Zealand, at the Vancouver Expo and Osaka, Japan. With your Qantas Connections card you can get a generous 20% discount off all pottery purchased when you visit Kamaka Pottery.

Contact Direct:

Kamaka Pottery,
Valentine Rd, Bridge Pa,
Hastings.

Tel: (070) 79 9555.

**SAVE 20% WITH
QANTAS CONNECTIONS**



5

PEAK HOUSE RESTAURANT

The best view in Hawke's Bay

NOBODY could argue that Peak House hasn't the best view in Hawke's Bay. It also has food and service to match.

The restaurant is open for lunch and dinner serving some innovative and palate tempting dishes. How about Scallops and Lychees in a Crayfish brandy source or Venison steaks with Port and Apple jelly? Or Poached Pears with Butterscotch sauce? Apple and Chestnut crepes?

The restaurant has a BYO licence and opens Wednesday to Monday for lunch; Thursday to Sunday for dinner. It is offering a 10% saving to Qantas Connections cardholders on their lunch or dinner bill - payment by cash or travellers' cheques.

Contact Direct:

The Peak House Restaurant,
Peak Road, Te Mata Park,
Havelock North.

Tel: (070) 77 8663.

**SAVE 10% WITH
QANTAS CONNECTIONS**

BREAKAWAY MOTORHOMES

Self contained motorhomes

GET away from it all and visit the unspoilt places in New Zealand. You can, with Breakaway Motorhomes. These all-weather freedom campers are self-contained with refrigerator and cooking facilities, water tank, lavatory, radio, kitchenware, bedding and linen. They're insulated and fitted with safety gas heaters. Maps and tourist information are included.

Breakaway has two types of motorhome - a standard 4+2 berth

camper (suitable for a maximum of 4 adults and 2 children) and a 2+2 berth Travelhome with private shower, and lavatory, hot and cold water, oven, etc. The vans are powered by economical and comfortable Isuzu diesel units.

Napier based, free delivery and collection anywhere in New Zealand for hires of 28 days or more. (Repositioning costs calculated by inverse proportion.)

Contact Direct:

Breakaway Motorhomes,
R.D. 11, Hastings,
Tel: (070) 78 8833. Fax: (070) 78 8850.

	Travel home	Camper
	You Pay	You Pay

New Zealand Dollars

1 Jan-31 Jan '89	145.35	116.45
1 Feb-31 Mar '89	122.40	97.75
1 Apr-30 May '89	111.35	89.25
1 Jun-15 Oct '89	90.10	72.25
16 Oct-19 Dec '89	141.10	113.05
20 Dec-31 Dec '89	164.90	142.80

Prices include unlimited kilometres, insurance and GST.

**SAVE 15% WITH
QANTAS CONNECTIONS**

