

McLEAN PARK, NAPIER

AUGUST 2nd, 1969

SOUVENIR PROGRAMME 20c

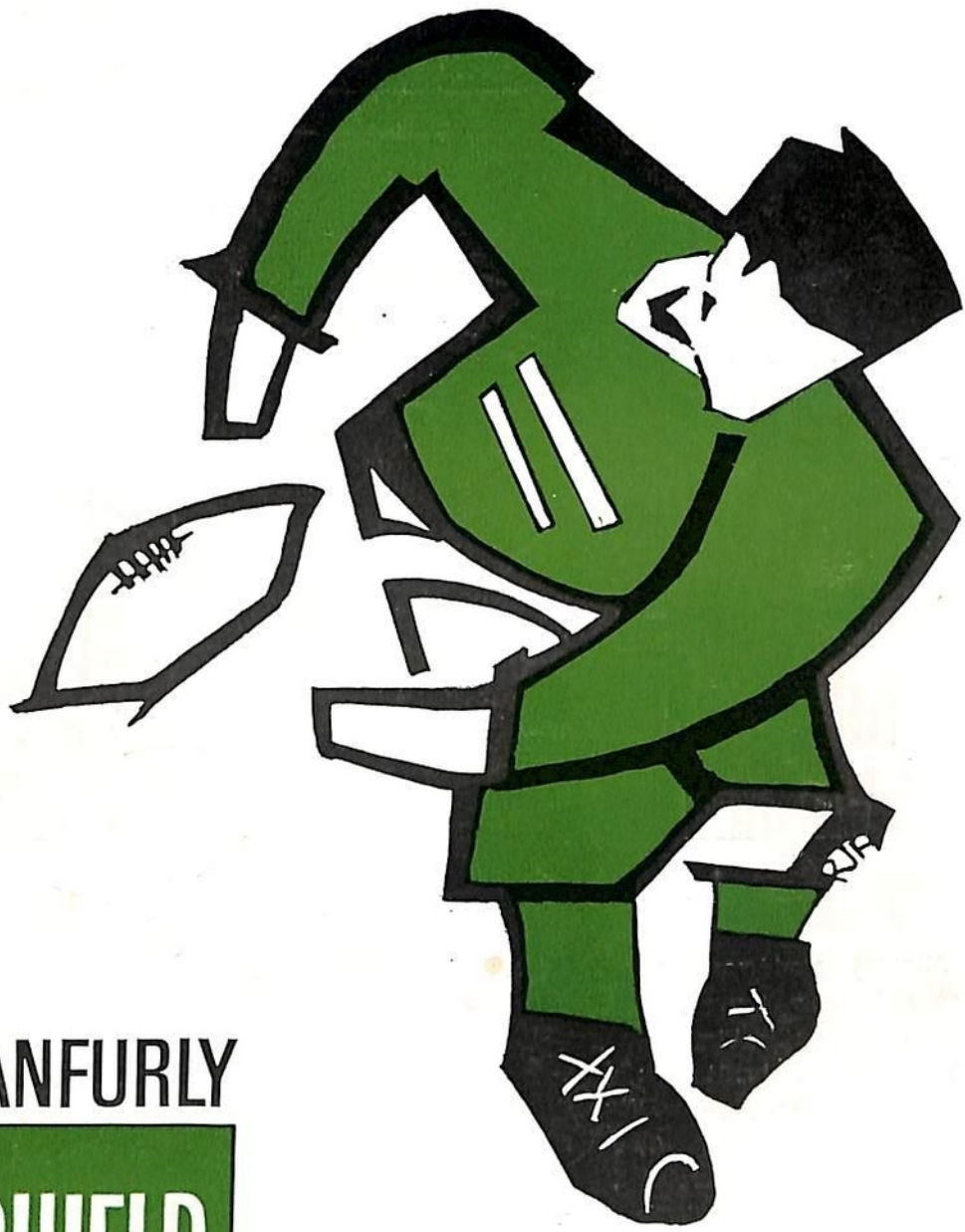
RANFURLY

SHIELD  
RUGBY



MANAWATU

HAWKE'S BAY



---

# World's largest selling most wanted King Size Virginia

All over the world more people  
smoke Rothmans than any  
other King Size Virginia.  
The reason is not hard to find:  
Rothmans extra length, finer filter  
and the best tobacco money  
can buy give you that cooler,  
smoother, more satisfying taste.  
Rothmans King Size really satisfies



MANUFACTURED BY ROTHMANS IN NEW ZEALAND, ALSO IN GREAT BRITAIN,  
AUSTRALIA, CANADA, HOLLAND, SOUTH AFRICA, MALAYSIA, AND EIRE



---

# PRESIDENT'S WELCOME



After the many glories enjoyed by Hawke's Bay over the past two years in defending the Ranfurly Shield, it is a sobering thought to welcome back Manawatu for its second bid for the shield.

For, in 1967 in the very first defence of the trophy in the current Hawke's Bay tenure, Manawatu almost took the shield and denied us the honour it has been in retaining it.

With this in mind we welcome the Manawatu team, its manager, union officials and supporters and wish them all a good game of Rugby and an enjoyable stay in the province.

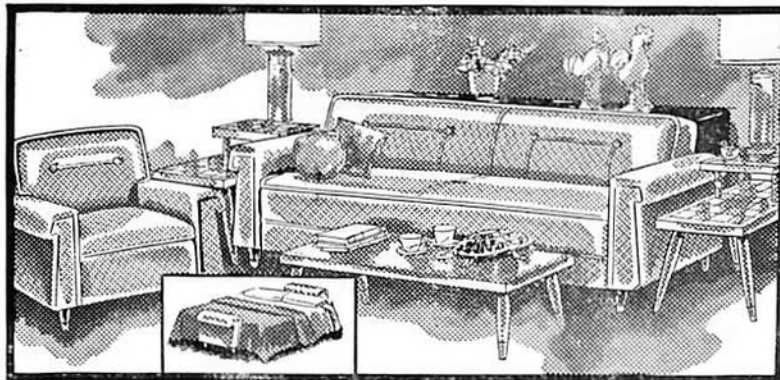
We are assured of a good match today because Hawke's Bay will want to show it was not "lucky" in the first match of 1967 and Manawatu, for its part, will want to prove it was "unlucky" in that game.

May the better team win in a match of good spirit which will further cement the close relations between the two unions.

W. H. GIMBLETT,  
President H.B.R.F.U.

---

## **FOR FINE FURNITURE . . .**



# **C. E. ROGERS and CO. LTD.**

EMERSON STREET, NAPIER

— PHONE 7017



Your  
**ECONOMY DRIVE**

begins with a friendly  
**CALTEX DEALER**

**CALTEX BORON**  
and  
**CUSTOM FIVE STAR**  
**Motor Oil**

— save money  
every mile you drive!



**DB** for **ME**  
*Everytime*



Enjoy it for its flavour — its consistency — its mellow satisfaction. Enjoy it in the strength you prefer. The beer you like — chosen from New Zealand's favourite seven.

**D.B. WAITEMATA**  
**PRODUCTS**

From the brewery that gives you the world's best beer.



---

# TODAY'S CHALLENGERS



**Brian Cuff**



**Alan Cornelius**



**Frank Thompson**

**Jim Francis (Varsity).**—Was a second five-eighth for the Hastings Sub-union representatives last year, but this season has been successfully converted to a full-back. A former Havelock North player, his performances must have put him in line for a national under-23 trial, and in Manawatu's four matches he has averaged 9.5 points a game. Student.

**Roger Twentyman (Freyberg O.B.).**—Played four matches for Southland last season until a knee injury kept him out. Over 15 tries to his credit this season and has scored in nearly every representative match with three against Horowhenua. Land valuer.

**Mike O'Callaghan (Varsity).**—Right back to his last year's form, and now, with close to 40 first-class appearances to his credit, is beginning to show the benefit of that experience. Veterinary student.

**Tony Loveridge (Varsity).**—At 20 is one of the babies of the team and is a local product, as he has worked his way up through the grades in the Manawatu. Is a student teacher at present at Massey on a scholarship.

**Donald Kitchen (Feilding).**—Today marks his "double" blazer match for Manawatu (40) and this alone makes him very experienced. Has also represented Canterbury. Motor Mech.

**Jim Brennan (Oroua).**—Utility back at his best from centre outwards. Made his first appearance for Manawatu last season and in private life is a farmer.

**Gerald Tuarau (H.S.O.B.).**—Made his debut

in the last match against Horowhenua and was a "find". Has a flair for the unusual and this alone makes him dangerous. Draughtsman.

**Brian Cuff (H.S.O.B.).**—Over 30 games to his credit for Manawatu, he may be one of the smallest halves in the business, but he would possess one of the biggest hearts. Clerk.

**Graeme Boness (Feilding).**—Rugged type of half with an "old" head who can be relied upon in any situation. In private life he is a stock and station agent.

**Allan Cornelius (H.S.O.B.).**—A fine leader with the experience of over 80 first-class matches behind him. Was a New Zealand Colt tourist to Australia in 1964. Livestock instructor.

**Ron De Cleene (Varsity).**—Today marks his 76th first-class match. A very experienced flanker with 21 matches to Wellington to his credit before coming to the Manawatu. New Zealand Universities representative and toured Japan with that team. Sheep and wool instructor.

**David Bydder (Feilding).**—Tall, rangy type who shows great promise as a flanker. Really hit the limelight last year when he played for New Zealand Universities. Can play equally as well at No. 8 or lock. Farmer.

**Sam Strahan (Oroua).**—Despite missing the Tests against the Welshmen, must still be well in line for South Africa. Has just on 70 first-class matches to his credit and at only 24 must have much more Rugby left in him. Farmer.

# GET THINGS HAPPENING IN YOUR HOME!



SEE YOUR NEAREST  
HOLTS BRANCH!!

- \* HOME APPLIANCES
- \* TIMBER
- \* HARDWARE
- \* FLOORING
- \* PAINT
- \* WALLPAPER

## 5 REASONS

WHY  
BUYING HAS NEVER  
BEEN EASIER...

**HOLTS**  
THROUGHOUT THE EAST COAST

Cash
Short Term Credit Account
Easy Credit Terms
Monthly Charge Account
Deferred Payment Scheme

**TODAY'S CHALLENGERS** — Continued from page 3.

**Francis Thompson** (Oroua).—Today is his 75th match and they are all for Manawatu. They do not come more honest. Farmer.

**Colin Young** (T.O.B.).—Played 20 matches for Wanganui and won his blazer for Manawatu earlier this season. Useful utility forward. Printer.

**Doug Knight** (Oroua). — A tireless 80 minute footballer. Regular member of the pack since 1965 and now has 50 matches to his credit. Farmer.

**Alex O'Connell** (T.O.B.). — A 23-year-old policeman who played 26 matches for Wanganui before coming to the Manawatu this season.

**Warwick Grieve** (Varsity). — A Hastings Sub-union representative last season. Former Hastings back, but now a specialist hooker. Quick striker who broke even with former All Black Terry McCashin in tight heads Student.

**Kevin Eveleigh** (T.O.B.).—A newcomer to the team who has been a Manawatu representative in most of the lower grades. Farmer.

**Don Kerr** (Varsity).—Young exciting forward who has all the makings of a top class lock. Veterinary student.

**Phil Murphy** (Marist).—Wanganui representative before coming to the Manawatu. An experienced hooker. Stock buyer.



**Mike O'Callaghan**

An illustration for Leopard Beers. A spotted leopard is shown in a dynamic, leaping pose on the left. A speech bubble coming from the leopard contains the text "ALWAYS ON THE BALL!". Below the leopard, the words "LEOPARD BEERS" are written in large, bold, outlined letters. To the right of the leopard is a vertical rectangular shape representing a beer bottle, with a dark oval on its side representing a label or a shadow.

**CABANA  
HOTEL**

**SHAKESPEARE ROAD  
NAPIER**

OUR TEAM AT  
THE CABANA ARE  
WINNERS WHEN IT  
COMES TO HOSPITALITY  
AND SERVICE.

**BE SURE YOU ARE  
AT THE CABANA  
AFTER THE GAME.**

Your Host  
**JACK HICKEY**

.....  
**For that "After the Game"**

Celebrations have your supplies ready . . . Visit

***Dalgety-Loan***

LIMITED

(Incorporated in England)

**WINES & SPIRITS DEPARTMENT**

53 DICKENS STREET, NAPIER—FREE DAILY DELIVERY

**PHONE 8267 (2 LINES)**

Stockists of Popular Brands of WINES, SHERRIES, LIQUEURS. Also ALES,  
STOUT and LAGER

Agents for OLD GENTRY GIN and THREE BARREL BRANDY

— Also —

**WHITE HORSE WHISKY**

DELICATE — DELECTABLE — DISTINCTIVE

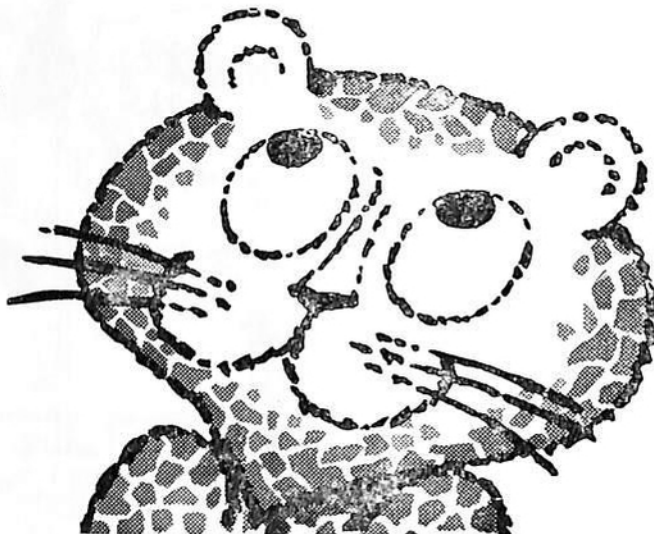
.....

**M M M M M M**

**THAT . . .  
ENTERTAINMENT**

**THAT . . .  
ATMOSPHERE**

**THAT . . .  
LEOPARD**



AT THE

**ALBION HOTEL—TONIGHT**

Your Hosts: DAVID and BARBARA MARKS



# ALMOST, BUT NOT QUITE

(By John Mancer)

Almost, but not quite. This would just about sum up some of Manawatu's latest challenges for the Ranfurly Shield but this could well be the time that they could hit that elusive target.

Hawke's Bay faced them in 1967 for the first shield defence of the present tenure and Manawatu obliged by giving them a shaking though beaten 11-6.

Today marks Manawatu's 11th challenge for the shield and the closest they have gone was twice against Taranaki. In 1958 Taranaki won 9-8 with a try when the referee was "looking" the other way, and then in 1964 Taranaki won 6-3 on a very muddy Rugby Park. Still, all that is past history.

## Close Battles:

Down through the years Manawatu and Hawke's Bay have had some close battles, though lately it has been the black and white hooped jersey that has come out on top. Nevertheless, the winning margins have not been great.

Last season Hawke's Bay won 9-6, with both sides only scoring penalty goals, and in 1966 there was only one point between them. Let us hope that today's match is equally as exciting.

Manawatu came here in 1967 with four wins to its credit from as many matches, but this season it arrives with a 50/50 record, having beaten Wanganui and Horowhenua, but going down to Wellington, rather badly, and Thames Valley by one point.

Retirements and injuries have found the coach Jack Gleeson and his assistant Lou Findlay having to rebuild the team this season, and in the backs they are a very young but promising and exciting.

## Much The Same:

The forward pack is much the same as the one which battled so well here in 1967. In actual fact, there are six of them here today—five in the Manawatu pack and Tote Rumball, whom we have lent to you for the season.

Manawatu has proved a fairly good "nursery" for Hawke's Bay, as we firstly taught Kel Tremain the fundamentals while he was at Massey, and Garry Condon is another immigrant from Palmerston North. Even Colin Le Quesne got a match or so in 1931 for Manawatu.

To a certain extent Hawke's Bay have obliged Manawatu with two players who have a great future. The 20-year-old Jim Francis is a full-back of class, but you can judge for yourself, and he is the type who could well sway the result of today's encounter in Manawatu's favour.



The other you have lent us is Warwick Grieve, and from the hooking berth he could well supply the winning ball.

## Beat Itself:

In 1967 Manawatu beat itself. They had by far the greater share of possession, but the tactics they adopted made one imagine that they were defending the shield rather than trying to lift it.

Today they have solid forwards who are quite capable of matching any eight in the country, and behind them they have young adventurous backs, who I am sure will not be forced on the defensive if they can help it. In 1967 both teams used eight feet of field up and down one sideline, so let us hope that they remember today that the whole field is for playing on.



## VIEWPOINT

Do we need street parades before Ranfurly Shield matches? With all due respect to those who have laboured so hard to provide them—and it appears it is only a few prepared to do so—it is time they were dropped for all but a few matches.

Perhaps the question is, does the public really deserve the parades? The public did nothing to show its appreciation last Saturday morning before the Wairarapa match.

Other unions which have live-wire supporter groups have experienced much the same response and have found support dwindling as the novelty of parades and pre-match fun wears off.

But is it all worth it? Would the effort not be better spent at the park to keep support alive during the match. For example, last Saturday when it appeared the team needed it?

The simple truth seems to be that unless the challenging union can guarantee whole-hearted support for the parade, then they should not be held. Only Wellington and Waikato promise this. Perhaps Taranaki.

If the pre-match parade is to be retained, then it needs more support. It requires more floats, more enthusiasm, more participation—by those in the parade and those watching.

.....  
**Be on the ball and call at:—**

# **Maltsaid's Service Station**

**PHONE  
87-463**



**PHONE  
87-463**

**24 Hour Service—Heretaunga Street, Hastings**

- ★ PETROLS, OILS, DIESEL, KEROSENE
  - ★ TYRES, BATTERIES, ACCESSORIES
  - ★ 24-HOUR BREAKDOWN SERVICE
  - ★ CONFECTIONERY, ETC.
  - ★ EUROPA SPECIALISED LUBRICATION SERVICE
- .....

**Look for this  
distinctive  
decanter bottle—  
costs no more  
than any other  
gin**

**LOCAL DISTRIBUTORS:**

**T. G. MACARTHY**

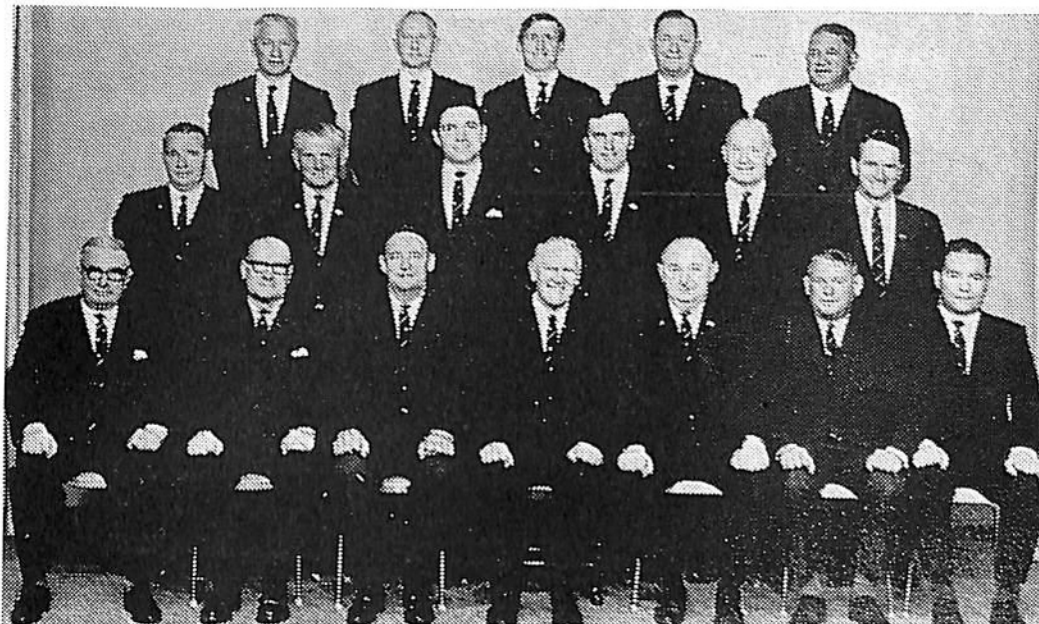
(HAWKE'S BAY LIMITED)

Cnr Bedford Rd & Douglas McLean Ave  
MAREWA

**AVAILABLE AT ALL  
HOTELS and BOTTLE  
STORES**

**We defy you  
to find a  
better gin  
than  
Seagers**





The 1968 management committee of the Hawke's Bay Rugby Union, from left: Back row, Messrs R. C. Tuck, H. L. Bradley, A. C. P. Dagg, M. F. Taylor, W. Walker. Middle row, Messrs R. S. Liddell, T. H. Reid, J. B. Buxton, P. L. Harris, J. I. Mackie, H. McNeil. Seated, Messrs J. B. Mahony, J. F. Taylor, C. M. Le Quesne (selector), W. S. Bramwell (chairman), V. T. Rouse (treasurer), J. J. O'Connor, R. G. Harris (secretary).

# MAGNUS

MOTORS LTD. L.M.V.D.  
AUSTIN & RAMBLER  
DEALERS

NEW & USED CARS  
ALSO  
COMMERCIAL VEHICLES

Dickens & Thackeray Streets  
Phone 4039

.....  
**LIKE THE BAY—LEAD THE WAY**



FORD TRACTORS and TRUCKS

● ESCORT

● CORTINA

● ZEPHYR

● FALCON

# SOUTH PACIFIC MOTORS LTD

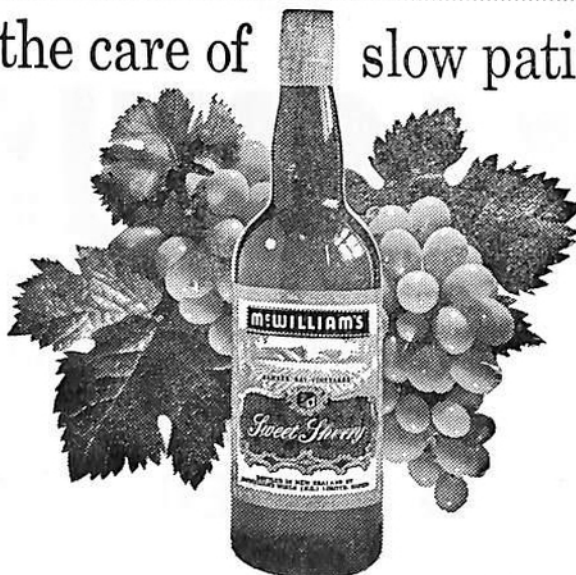
Top of the Town—Hastings Street  
NAPIER



WHERE PART OF THE DEAL  
IS SERVICE

L.M.V.D.

.....  
Rich with the care of slow patient ageing



## McWILLIAM'S WINES



.....

# CURTAIN-RAISER

McLEAN PARK

12.45 p.m.

**NAPIER B.H.S.**

(Blue and White)

15 B. Cottrell

14 A. Gilbert

13 N. Ebbett

12 D. Mills

11 M. Oldershaw

10 J. Pearcey

9 P. Jane

8 G. Richards

7 I. Buchanan

5 G. Bell

3 C. Geddis

6 M. Ashcroft

4 T. Macky

1 C. Frost

2 R. Nolan

Reserves—16 M. Gunnell, 17 S. Wenley, 18 W. Hawkins, 19 T. Paku.

**PALM. NTH. B.H.S.**

(All White)

23 O. Evans

13 T. Pewhairangi

21 M. Yates

19 A. Menhennet

20 R. Hewer

16 P. Scott

14 J. Tangaere

10 W. Steer

24 D. Grant

7 C. Shannon

4 B. Britton

12 J. Matenga

8 J. Fitch

3 P. Bones

1 I. Adler

Reserves—18 D. Newton, 17 S. Leighton, 15 R. Stevens, 11 R. Blackburn, 9 C. McKinnon.

.....  
**Music: NAPIER CITY BAND** (Musical Director: K. Aiken-Jones; Drum Major: D. G. Lipp).  
.....

**Before the Game Refresh Yourself at the**

# HASTINGS HOTEL

**REMEMBER**

**BARS AND BOTTLE STORE**

**OPEN AT 9 a.m.**

**(Bert Sherborne, Proprietor)**

**The Hub of the Plains  
TAKAPAU HOTEL  
TAKAPAU**

YOUR FRIENDLY HOSTS  
BERNARD AND MARJORY KIRSCHBERG  
HAERE MAI HAERE MAI

**Tui Ale at its Best**

BEST TEAM — BEST PRODUCTS



Quality Fisher and Pykel Products

LEONARD - WASHRITE - HOOVER - SHACKLOCK - ATLAS  
MORRISON and MASPORT MOWERS - PYE, MURPHY and  
ULTIMATE RADIOS and TELEVISION - PIANOS - GUITARS  
RECORDS - MUSIC - HI-FI EQUIPMENT - RADIO-TELEPHONES

**CONSULT THE SPECIALISTS**

**TOURIST MOTORS LTD.**

L.M.V.D.

offer THE GREAT NEW

**Chrysler Valiant**

CALL ON US IN . . .

NAPIER — HASTINGS — WAIPUKURAU

2.30 p.m.

**C'MON  
THE  
BAY**

**HOME OF**



**OF HASTINGS**

McLEAN PARK

**MANAWATU**

(Green and White)

- |                   |                 |                 |
|-------------------|-----------------|-----------------|
| 14 M. O'Callaghan | 15 J. Francis   | 13 R. Twentyman |
| 11 D. Kitchen     | 12 T. Loveridge | 10 G. Tuarau    |
|                   | 9 B. Cuff       |                 |
| 8 A. Cornelius    |                 | 6 D. Bydder     |
| 7 R. De Cleene    |                 | 4 F. Thompson   |
| 5 S. Strahan      |                 | 1 A. O'Connell  |
| 3 D. Knight       | 2 W. Grieve     |                 |
- Reserves—16 G. Boness, 17 J. Brennan, 18 P. Murphy, 19 D. Kerr,  
20 K. Eveleigh.

Referee: Mr A. R. TAYLOR (Canterbury)

**HAWKE'S BAY**

(Black and White)

- |                   |                 |                     |
|-------------------|-----------------|---------------------|
| 14 W. L. Davis    | 15 P. R. Carney | 13 M. G. Duncan     |
| 11 J. P. Dougan   | 12 I. R. MacRae | 10 B. D. M. Furlong |
|                   | 9 H. J. Paewai  |                     |
| 8 G. A. Condon    |                 | 6 K. R. Tremain     |
| 7 J. P. Rumball   |                 | 4 R. S. Abel        |
| 5 K. K. Crawford  |                 | 1 H. Meech          |
| 3 N. W. Thimbleby | 2 A. Meech      |                     |
- Reserves—16 I. R. Bishop, 17 M. A. Thomas, 18 D. G. Curtis,  
19 M. R. S. Natusch, 20 D. B. Smith, 21 M. J. O'Malley,  
22 G. T. Wiig, 23 P. D. Pratt, 24 R. M. Robinson,  
T. Davis.



**JAMS**

**Great Energy**

**Food For**

**Great**

**Athletes**

**The Biggest  
BALLROOM  
in the Bay!**

VISITORS—

You're Assured of a  
Welcome on Board the  
Luxurious

**"M.V. TOP HAT"**

**DANCE  
DANCE**

**80c • Dancing • Variety • 80c**  
Men . . . Ties MUST be Worn. Jeans Prohibited.



**TONIGHT  
TONIGHT**



HAWKE'S BAY'S OWN

**Peter Pan**

— and —  
NEW ZEALAND'S BEST  
ICE CREAM AND FROZEN FOODS

**CROWN HOTEL**

at the Port, Napier

**STANDARD ALE ON TAP**

**BARS OPEN 9 a.m. DAILY**

MINI TANKER AVAILABLE FOR FUNCTIONS

PHONE 8920

Also — GOOD ACCOMMODATION—REASONABLE TARIFF  
Licensee: ALLAN RICHARDS

---

## **WESTINGHOUSE**

Manufactured in New Zealand by . . .

# **BEGLEY INDUSTRIES LTD.**

(Under licence to Westinghouse International Electric Co. U.S.A.)

- AUTOMATIC ELECTRIC COFFEE MAKERS
- CABINET ELECTRIC CLOTHES DRYERS
- ELECTRIC FLOOR POLISHERS
- ELECTRIC PANEL HEATING
- TEFLON COATED ELECTRIC FRYPANS
- FRACTIONAL H.P. ELECTRIC MOTORS
- MOULDED CASE CIRCUIT BREAKERS

## **BEGLEY INDUSTRIES LTD.**

Taradale Road, Napier — Phone 36-029

---

# **Schwepesmanship**

## **Opens up**

## **Great**

## **Possibilities**

*The simple art of being a good mixer*

# MORE ATTACK, MORE SUCCESS

By "Flyhalf".

After having watched Hawke's Bay defend the Ranfurly Shield 15 times now since 1966, I was interested to read this week comments by Mr P. S. Burke, captain of the 1958 Taranaki Ranfurly Shield team, and a selector of the Taranaki team in the early 1960s when it also held the shield.

Commenting on the 1963 series in New Plymouth, Mr Burke said that several of the teams which challenged that year looked more like shield defenders than challengers.

Similar comments have been made during 1967 and 1968 about the quality of challenging teams against Hawke's Bay, the only team quoted as an exception being Marlborough.

## Interesting:

These were interesting comments in view of last week's performance by Wairarapa. Here was a team which was determined to attack and the captain, Brian Lochore, said after the match that this had been the intention of his team.

The Hawke's Bay captain, Kelvin Tremain, said there was no comparison between the 1967 Wairarapa team which challenged for the shield and the 1969 Wairarapa side.

For both these men and for the spectators last week it was obvious that Wairarapa had put a great deal of preparation into the challenge, and this was displayed by their single-minded determination to attack and get points on the board.

One wonders, however, whether the introduction of the kick-into-touch rule has not altered the balance of power for the shield holders. Hawke's Bay could not be accused of the same dour tactical battle as Taranaki in retaining the shield, but the approach over the past two seasons has been closely allied to that theory.

Perhaps today's match will give a clearer indication of whether it is as straightforward as in the past to apply a close defensive network to keep challenging unions out.

Last week marked the third try against Hawke's Bay in 15 defences—only one try against for each five matches takes some beating as a record in defence.

Hawke's Bay scored three, but might have scored more: Karaan Crawford would have scored in the first half but for the referee stopping the game for an earlier infringement. Crawford was loping towards the line when the whistle sounded.

Blair Furlong's dropped goal which rebounded off the upright was the making of a try for Bill Davis. Davis unfortunately knocked the ball on and Wairarapa forced down. I suspected, however, that the ball was knocked back over the Wairarapa line by Wairarapa players after Davis touched the

ball. In which case it should have been a scrum and so near to the posts one can only guess what might have happened.

## In a Flash:

John Dougan got the credit for scoring a try and kicking a dropped goal, but he also saved Wairarapa from scoring in the second half. He was across in a flash to kill a likely looking burst into the corner which would have put Wairarapa back in the game.

Mick Duncan gave one of the best wingers exhibitions on the park for a while. He beat his man every time, deserved a try in the opening stages, but made up for this by scoring at the end.

Hawke's Bay's Ranfurly Shield record is:

	P.	W.	L.	D.	F.	A.
1904-21	4	-	4	-	14	54
1922-26	25	25	-	-	729	213
1927-33	4	1	3	-	44	44
1934	4	3	1	-	85	42
1935-65	6	-	5	1	38	66
1966-68	16	14	-	2	322	87
Totals	59	43	13	3	1232	506

## Manawatu's Record This Season

v. Wanganui, won, 27-3. For Manawatu, Mike O'Callaghan (2), Don Kitchen and Ron De Cleene tries; Jim Francis three conversions and three penalty goals.

v. Wellington, lost, 25-6. For Manawatu, Dave Bydder a try and Francis a penalty goal.

v. Thames Valley, lost, 18-17. For Manawatu, Roger Twentyman and Tony Loveridge a try each; Francis three penalty goals and a conversion.

v. Horowhenua, won, 24-0. For Manawatu, Twentyman (3), O'Callaghan and Gerald Tuarau tries; Francis three conversions and a penalty goal.

## Midget Match

Ninth Grade  
TECHNICAL  
(Red)

D. Clarke; P. Clarke, M. Robertson, D. Edmundson; P. Laurent, G. Edmundson; S. Woods; K. Govan; N. Higgs, B. Walker, A. Redman, C. Smith; K. Pearson, G. Wylie, P. Trow. Reserves: R. Cameron, S. Destounis.

COLENSO-PIRATES  
(Black)

S. Hogg; B. Chambers, K. Karitiana, D. Walsh; I. Whare, A. Sherwood; C. Scott; M. Kemp, P. Lamb, P. McSweeney, G. Greer, I. Prisk; W. Lowe, G. Fox, B. Bagget (captain). Reserves: A. Williams, T. Costello.

2.15 p.m. (5min halves).





.....

**It's all part of the game . . .**



**TEAMWORK** that is. The team at the **Hawke's Bay Electric Power Board** are at your service. Call in and see them. Discuss your electrical requirements with their trained advisory staff.

**They Specialise in After Sales Service  
of All Home Appliances**

**P** **HAWKES BAY ELECTRIC  
POWER BOARD**

**NAPIER — MAREWA — HASTINGS**

---

**RUGBY PATRONS  
RUGBY CLUBS**

**YOUR SAVINGS COULD EARN**

**5 $\frac{1}{8}$ %** *from*  
**ONE YEAR UP TO FIVE YEARS**

**5 $\frac{1}{2}$ %** *from*  
**SIX YEARS UP TO NINE YEARS**

**5 $\frac{3}{4}$ %** *from*  
**TEN YEARS UP TO TWENTY YEARS**

**Hawke's Bay Hospital Board**

**Government Guaranteed**

**LOAN**

**Phone HAWKE'S BAY HOSPITAL BOARD FOR DETAILS**

## Hawke's Bay's 1969 Match Record

v. Wairarapa	17 - 14
v. Auckland	6 - 3
v. Counties	17 - 9
v. Wairarapa*	18 - 11
Points	58 37

### AUGUST

- 2 v. Manawatu (Napier)\*.
- 9 v. King Country (Napier)\*.
- 16 v. Bay of Plenty (Whakatane).
- 23 v. Waikato (Napier)\*.
- 30 v. Wellington (Napier)\*.

### SEPTEMBER

- 6 v. Poverty Bay (Gisborne).
- 10 v. North Auckland (Napier)\*.
- 13 v. East Coast (Tokomaru Bay).
- 20 v. Taranaki (Napier)\*.
- 27 v. Canterbury (Napier)\*.

\* Ranfurly Shield.

## Hawke's Bay Points Scorers this Season

	P.	T.	C.	D.G.	Pts.
I. R. Bishop	7	-	2	1	25
J. P. Dougan	-	1	-	2	9
W. L. Davis	-	1	-	-	3
B. D. M. Furlong	-	-	-	1	3
P. R. Carney	1	-	-	-	3
I. R. MacRae	-	1	-	-	3
R. S. Abel	-	1	-	-	3
M. R. S. Natusch	-	1	-	-	3
H. Meech	-	1	-	-	3
M. G. Duncan	-	1	-	-	3
Total	8	7	2	3	58

## Other Representative Matches

Today: King Country v. Wanganui, Taurarunui; Bush v. Horowhenua, Levin; Marlborough v. West Coast (Seddon Shield), Grey-mouth; Bay of Plenty v. Otago, Dunedin; Counties v. Thames Valley, Thames; South Canterbury v. Southland, Invercargill.

Wednesday: Tonga v. Nelson-Golden Bay-Motueka, Nelson; Bay of Plenty v. Southland, Invercargill; Waikato v. Thames Valley, Thames Valley.

**THE**

# **NAPIER - WELLINGTON TRANSPORT CO. LTD.**

**"Your Goods Travel While You Sleep"**

(The Secret of Our Success)

Direct Freight Operators From WELLINGTON to  
NAPIER, HASTINGS and WANGANUI  
and VICE VERSA

Address—Head Office: STATION STREET, NAPIER (Phone 4539 — 3 lines)

Hastings Branch: KING STREET, HASTINGS (Phone 69-115)

Wellington Branch: THORNDON YARDS (Phone 71-689 — 6 lines)



---

# The Napier Harbour Board

---

*Invites YOU to invest NOW  
in their Trustee Security Stock*

**THE PORT OF NAPIER IS ONE OF NEW  
ZEALAND'S MAJOR EXPORT PORTS. HAND-  
LING 900,000 TONS OF CARGO IN THE  
LAST FINANCIAL YEAR.**

**FUTURE DEVELOPMENT INCLUDES NEW  
OVERSEAS BERTHS AND NEW CARGO  
HANDLING AREAS.**

---

## **YOUR MONEY CAN HELP**

---

*For Further Details Apply to The*

**NAPIER HARBOUR BOARD  
TELEPHONE 8684  
P.O. BOX 166  
NAPIER**

## Refereeing Points

(By Hugh McNeill)

In last Saturday's shield match, one very noticeable feature worth commenting on was the few occasions when the ball had to be put into the scrummage more than once.

Admittedly feet were sometimes waving about in the air before the ball was put in, but the referee settled the players down. The players kept their feet back, the ball went in and out it came — first time.

When a referee has continually to ask halfbacks to put the ball into the scrummage, it becomes exasperating for the players, as well as the spectators.

I think the referee, Mr Roy Macey, made this troublesome job look simple in the Hawke's Bay-Wairarapa match.

A decision which many would not have followed was that which led up to Wairarapa being penalised late in the second half.

It was from this kick that Hawke's Bay took a 15-11 lead.

Wairarapa at this time was going back on defence and the Wairarapa captain, Brian Lochore, deliberately knocked the ball forward.

This is a breach covered in the laws and the decision — a penalty kick at the place of the infringement — was definitely correct.

## Selection Panel



Jack Gleeson (left) and Lou Findlay, the selector-coach and assistant coach of the Manawatu team.

## A Good Team

Hawke's Bay was a much improved team from that which played Auckland earlier in the season, All Black selector, Pat Walsh, said after watching last week's defence against Wairarapa.

"Hawke's Bay is already a good team and it is just a matter now of recovering last season's form," he said.



# Travel by Newmans

Daily Services to and from

NAPIER—HASTINGS—PALMERSTON NORTH—HUTT VALLEY—WELLINGTON

Charter Coaches — North and South Island Tours

FOR COMFORT, CONVENIENCE AND COURTESY

Travel By

NEWMAN'S COACHLINES

MUNRO STREET, NAPIER — PHONE 5874

RENTAL CARS

TAKE A TASMAN

Modern Cars to Suit all Purposes

From a Station Wagon to a Mini

IF YOU WANT TO HIRE A CAR GO TO

**TASMAN RENTAL CARS (Napier) LTD.**

NEWMAN'S BUILDING

MUNRO STREET, NAPIER — PHONE 5874



**"ANOTHER NEWMAN'S SERVICE"**

---

# **HAYNES LTD.**

**WHERE THE BEST COSTS LESS**



NAPIER'S LEADING BUTCHERS FOR THE PAST 60 YEARS

HASTINGS STREET, MAREWA, TARADALE and MARAENUI

---

**Symbolising  
the best  
in insurance**

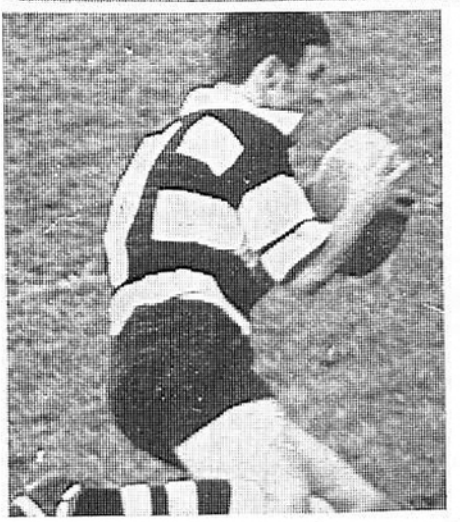


**NORWICH UNION  
LIFE INSURANCE SOCIETY**

**NORWICH UNION  
FIRE INSURANCE SOCIETY LTD.**

**Norwich Union Building, Hastings Street, Napier**

BRANCHES AND REPRESENTATION THROUGHOUT NEW ZEALAND.



Try-scoring against Wairarapa last week — **TOP:** Mick Duncan's last-minute try. **INSET:** John Dougan opens Hawke's Bay's score with a try. **ABOVE:** Hilton Meech scores with Gus Meech and Kel Tremain alongside.

# TEAM STATISTICS

## HAWKE'S BAY

## MANAWATU

HAWKE'S BAY			MANAWATU				
	Age	Height	Weight		Age	Weight	Height
I. R. Bishop	26	5 11½	12 3	J. G. Francis	20	11 7	6 0
P. R. Carney	22	6 0	13 0	M. W. O'Callaghan	23	12 0	5 8
M. G. Duncan	21	6 1	13 10	R. Twentyman	22	12 0	5 9
D. B. Smith	25	5 10½	11 0	D. A. Kitchen	27	11 7	5 6½
D. G. Curtis	25	5 9½	12 3	J. Brennan	20	10 7	5 10
W. L. Davis	26	5 11½	12 12	G. I. Tuarau	24	11 0	5 7
I. R. MacRae	26	6 2	14 10	B. J. Cuff	24	10 7	5 5
J. P. Dougan	22	5 7½	11 3	G. V. Boness	27	10 10	5 6
M. R. S. Natusch	18	5 10	13 0	T. Loveridge	20	11 3	5 9
B. D. M. Furlong	24	6 0	13 7	R. T. De Cleene	27	13 12	6 2
M. A. Thomas	22	5 6	10 7	D. E. Bydder	23	14 6	6 3½
H. J. Paewai	21	5 7	11 9	F. M. Thompson	29	14 5	6 2
G. A. Condon	24	6 2	14 3	C. Young	28	14 4	6 1
T. Davis	22	5 11	14 4	K. A. Eveleigh	21	12 10	5 11
K. R. Tremain	31	6 2	16 7	S. C. Strahan	24	16 7	6 4½
J. P. Rumball	26	6 1	13 12	D. J. Knight	28	14 7	6 0
P. D. Pratt	24	6 1½	12 8	A. L. J. O'Connell	23	15 7	6 2
K. K. Crawford	26	6 3	17 7	P. F. Murphy	27	13 0	5 10
R. M. Robinson	20	6 7	16 7	W. Grieve	22	14 10	6 0
R. S. Abel	33	6 4½	15 7	D. Kerr	22	15 2	6 2
N. W. Thimbleby	30	5 10	15 10				
G. T. Wiig	21	6 3½	15 7				
H. Meech	27	6 3	15 7				
M. J. O'Malley	27	5 11	13 0				
A. Meech	29	5 10½	13 7				

# BARRY BROTHERS LTD

ESTABLISHED 1887

**GENERAL CARRIERS**

**COAL MERCHANTS**

**H.M. CUSTOMS**

AMPLE STORAGE  
FACILITIES  
CRANES and FORKLIFTS

**NAPIER**

HASTINGS STREET

**AHURIRI**

HEAD OFFICE

**HASTINGS**

HASTINGS 89-300, 83-317

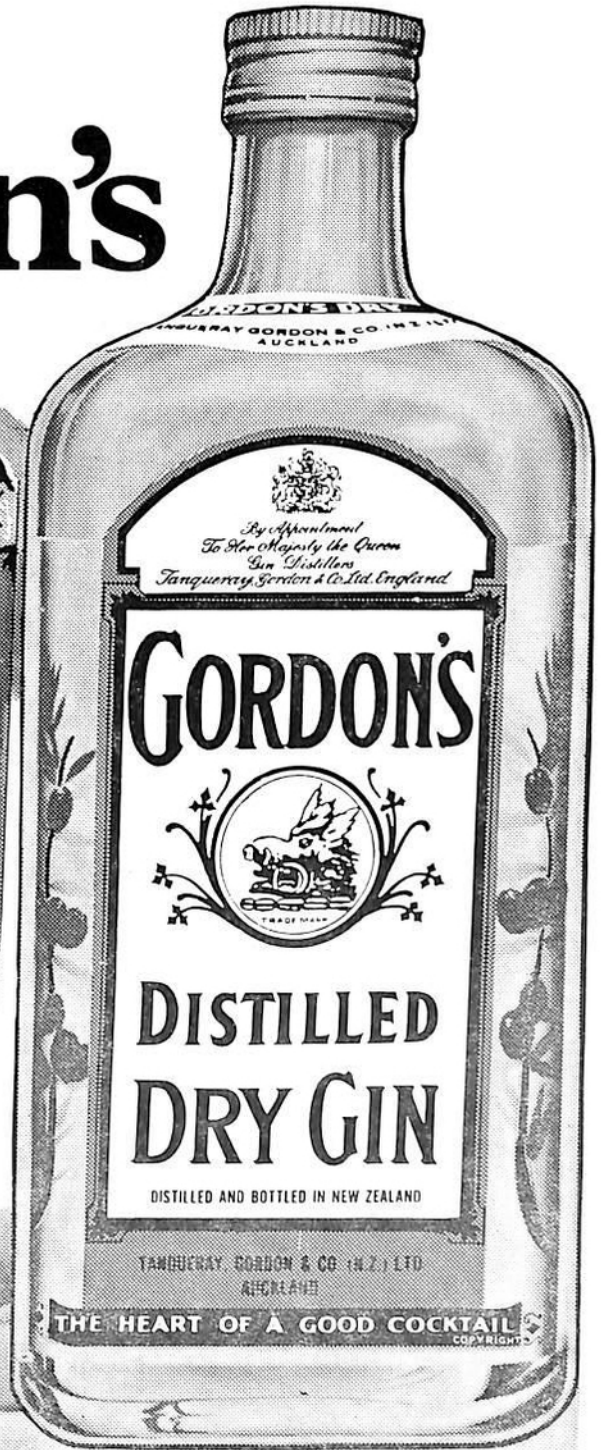
Phones — NAPIER 4062 (Three Lines)

Direct Line From HASTINGS — 83-041



# Mix with Gordon's

Mix Gordon's with Tonic,  
Orange, Lemon or Cola, or  
anything else you  
fancy ...people find  
they're made  
for each other



LOCAL DISTRIBUTORS:

**HARDWICKE and ROBERTSON (H.B.) LTD.**

13 CARLYLE STREET, NAPIER

PHONE 7101



*There's a time  
and a place in your life  
for the full-bodied  
taste of a great  
canned beer*



## **LEOPARD RED LABEL STRONG DRAUGHT BEER**

BREWED AND CANNED BY LEOPARD BREWERY LTD., HASTINGS

Go hunt a Leopard—the really great beer

