

McLEAN PARK, NAPIER

SEPTEMBER 10th, 1969

SOUVENIR PROGRAMME 20c

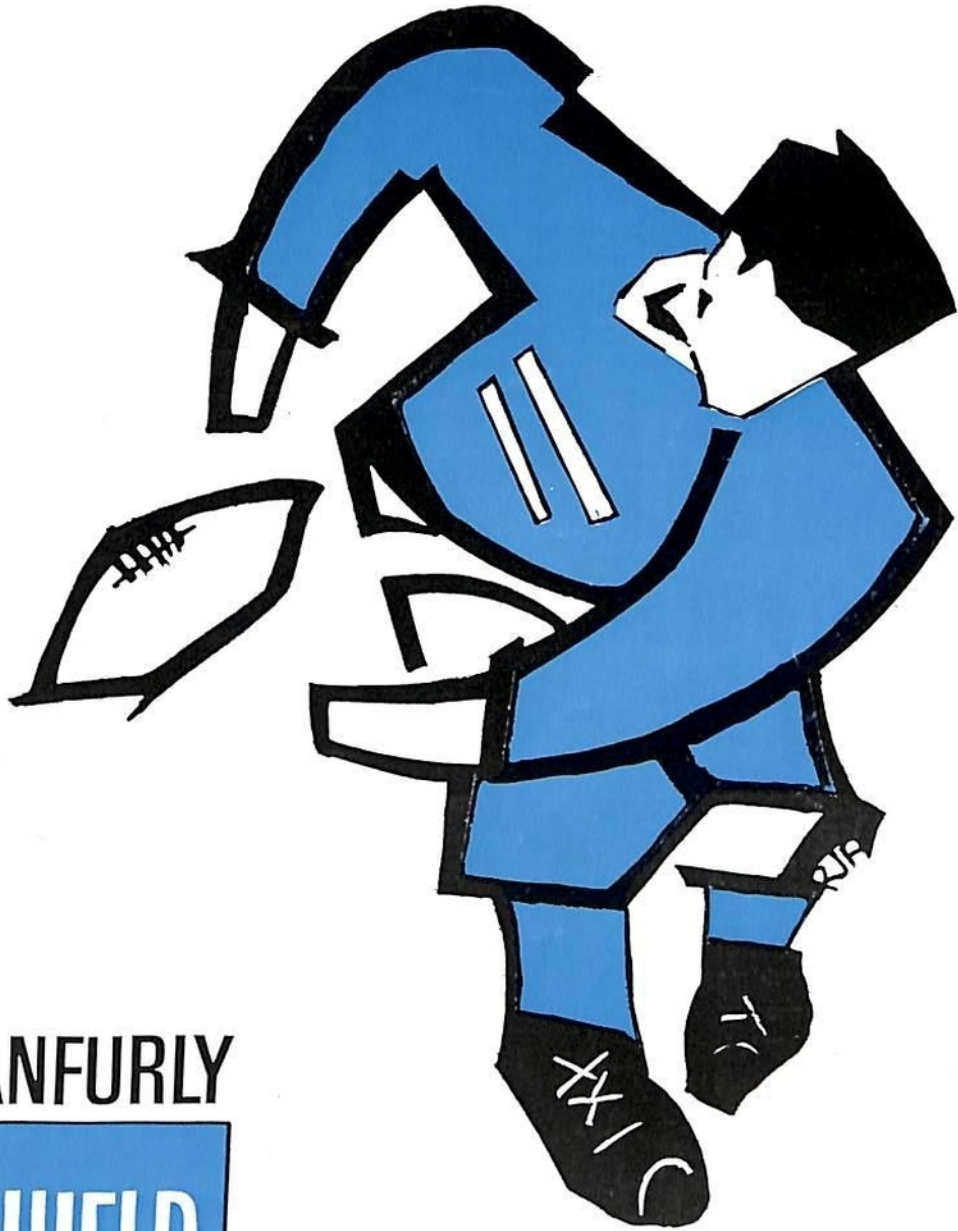
RANFURLY

SHIELD
RUGBY



NORTH AUCKLAND

HAWKE'S BAY

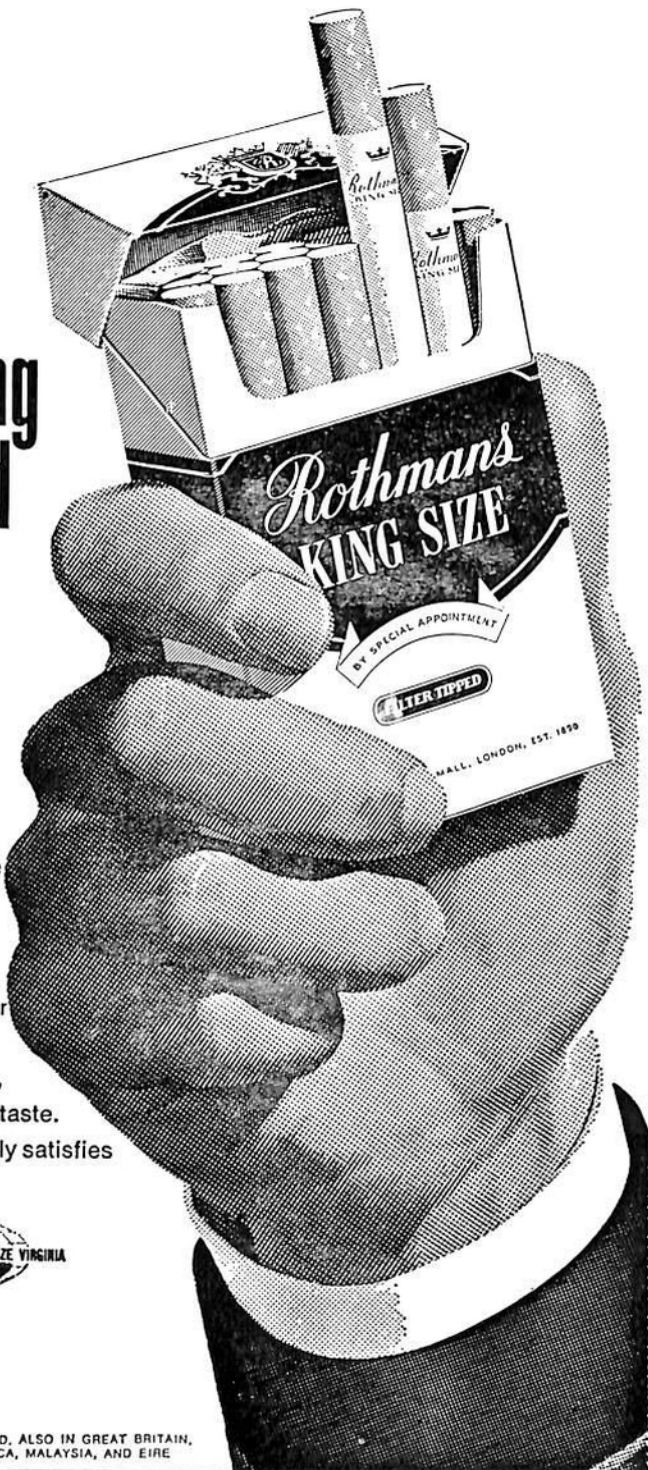


World's largest selling most wanted King Size Virginia

All over the world more people
smoke Rothmans than any
other King Size Virginia.
The reason is not hard to find:
Rothmans extra length, finer filter
and the best tobacco money
can buy give you that cooler,
smoother, more satisfying taste.
Rothmans King Size really satisfies



MANUFACTURED BY ROTHMANS IN NEW ZEALAND, ALSO IN GREAT BRITAIN,
AUSTRALIA, CANADA, HOLLAND, SOUTH AFRICA, MALAYSIA, AND EIRE





Chairman's Welcome

We, in the Bay, extend to the North Auckland team, officials and supporters a hearty welcome and hope that, win or lose, their visit will be a most enjoyable one.

Hawke's Bay and North Auckland have met on only two previous occasions, one in 1929 at Whangarei when North Auckland won 10 points to 5 and again in 1930 at Hastings when Hawke's Bay won 27 to 17. The two teams have never previously met when the Ranfurly Shield has been at stake.

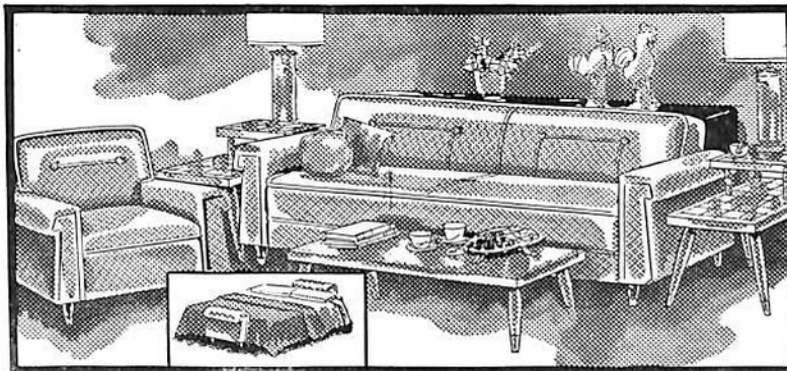
North Auckland has won the Shield on five occasions, the last time when Auckland was defeated on the 20th August, 1969, by 17 points to 11.

Over the years, North Auckland has produced many great players. A few of them being Peter Jones, Muru Walters, Johnny Smith, Ned Erceg, N. P. Cherrington and, of course, the three Going brothers.

We hope that today's game will be one of the great games for the coveted Shield, played at speed in the right spirit and with the best team being successful.

W. S. BRAMWELL,
Chairman, H.B.R.U.

FOR FINE FURNITURE . . .



C. E. ROGERS and CO. LTD.

EMERSON STREET, NAPIER

— PHONE 7017



Your
ECONOMY DRIVE

begins with a friendly
CALTEX DEALER

CALTEX BORON
and
CUSTOM FIVE STAR
Motor Oil

— save money
every mile you drive!



DB for ME
Everytime



Enjoy it for its flavour — its consistency — its mellow satisfaction. Enjoy it in the strength you prefer. The beer you like — chosen from New Zealand's favourite seven.

D.B. WAITEMATA
PRODUCTS

From the brewery that gives you the world's best beer.

NORTH AUCKLAND PEN PORTRAITS

T. (Terry) McDERMOTT. Fullback. Dargaville club. 21 years. 12st 3lb. 5ft 9in. Neat and tidy fullback who times his entry into backline attacks well. Kicks accurately with either foot. A good goal kick. Yet to make his representative debut. He is a farmer.

L. J. (Les) BRADLEY. Wing-threequarter. Mid-Northern Club. 20 years. 11st. 5ft 10in. A newcomer to the squad. Swift, eager and elusive runner. Prominent track sprinter. He played in this year's trial for N.Z. Juniors. He is a carpenter.

H. W. (Wayne) CAREY. Reserve half-back. Kaitaia Club. 25 years. 11st. 5ft 6in. Extremely reliable half-back with an excellent pass. Has ability to make ferret-like runs through the defence. He is a cabinetmaker.

F. J. (Frank) COLTHURST. Hooker. Kerikeri Club. 30 years. 15st 6lb. 6ft. One of the biggest and best hookers in the country. Wasn't bettered by any hooker last season. Former North Island, Auckland and Thames Valley representative. He is a stock and station agent.

B. L. (Brian) GOING. First five-eighths. Mid-Northern Club. 23 years. 13st. 5ft 9in. Bigger (and better) than most five-eighths in the country. Has marvellous hands and always runs at top speed. Played for New Zealand Maoris last season and again this year, in the match against Tonga in Christchurch. He is a farmer.

S. M. (Sid) GOING. Half-back. Mid-Northern Club. 25 years. 12st. 5ft 7in. One of the best half-backs in the world. A great runner from the base of the scrum or ruck, a wonderful passer and an expert kick and follow man. An All Black, North Island and New Zealand Maori player. He is a farmer.

R. A. (Richie) GUY. Prop forward. Waipu Club. 28 years. 15st. 6ft 2in. Powerful scrummager who gets to amazing places in the loose. A determined hunter of the ball. He is a farmer.

L. P. (Laly) HADDON. No. 8 forward. Omaha Club. 29 years. 14st 8lb. 6ft 1in. Played for N.Z. Maoris against 1965 Springboks, 1966 British Isles and 1969 Tongans. Extremely fast for such a big man. Never far from the ball. He is a farmer.

D. W. (Don) HEWITT. Flanker. Old Boys Club. 31 years. 14st 2lb. 6ft 2in. A champion jumper near the back of the lineout and a great tidier-upper. Current captain. Former All Black trialist. He is an accountant.

B. (Bevan) HOLMES. Lock or No. 8 forward. Kamo Club. 23 years. 15st 4lb. 6ft 2in. Young, big and extremely powerful with the ball in hand. Made his mark in the 1968 All Black trials and gained selection in both the New Zealand Juniors and the North Island teams. This year he captained New Zealand Juniors in their match against Tonga. He is a school teacher.

R. R. (Rod) JONES. Centre-threequarter. Omaha Club. 23 years. 14st 6lb. 6ft. Big and powerful, hard to pull down. An excellent tackler. Made first appearance for North Auckland last season when he turned out 13 times. He is a plumber.

J. S. (Jim) KIRTLAN. Lock forward. Kaitaia Club. 28 years. 14st 5lb. 6ft 2in. One of the best lineout men in the business. Former Counties representative. Has played nearly 100 first-class games.

P. B. (Peter) MAC. Prop forward. Old Boys Club. 28 years. 15st 7lb. 6ft 2in. Sturdy front row man. Invaluable in scrummaging, lineouts, and vanguard rushes. Former Taranaki representative. He is an insurance clerk.

J. E. (Joe) MORGAN. Second five-eighths. Mid-Northern Club. 23 years. 12st 7lb. 5ft 10in. Tough, hard tackler and hard runner. Covers expertly. Rated as one of the country's most accomplished second five-eighths in 1968. He is a carpenter.

F. T. (Fred) MORGAN. Reserve Prop forward. Mid-Northern Club. 22 years. 13st 10lb. 5ft 10½in. A tough front-row man who runs and handles like a back. Relishes taking the ball from kick-offs. Newcomer to the North Auckland squad. He is a carpenter.

D. R. (Dennis) PANTHER. Wing-threequarter. Awanui Club. 23 years. 13st. 5ft 10in. Hard-running and extremely fast wing-threequarter. Played for New Zealand Juniors last year and was a reserve for the All Blacks. He is a farmer.

M. J. (Max) ROBINSON. Flanker. Kerikeri Club. 30 years. 14st. 8lb. 5ft. 11in. A non-stop rampager who does two men's work in the tight and loose. Has an unbeatable smother tackle. He is an insurance agent.

T. P. (Terry) SULLIVAN. Reserve hooker. Kaitaia Club. He first played for the Union against the Vikings Club, in 1967, and represented North Auckland against Golden-Bay-Motueka, during last year's South Island tour. He is 22 years of age, weighs 14 stone and stands 5ft 10in. Occupation: Carpenter.

R. (Ray) TRIGG. Half-back or five-eighths or fullback. Dargaville Club. 23 years. 5ft 8½in. 11st 4lb. Former Whangarei representative who has been playing most impressively in Northern Wairoa this season. A solid player who tackles splendidly and handles well. He is a company representative.

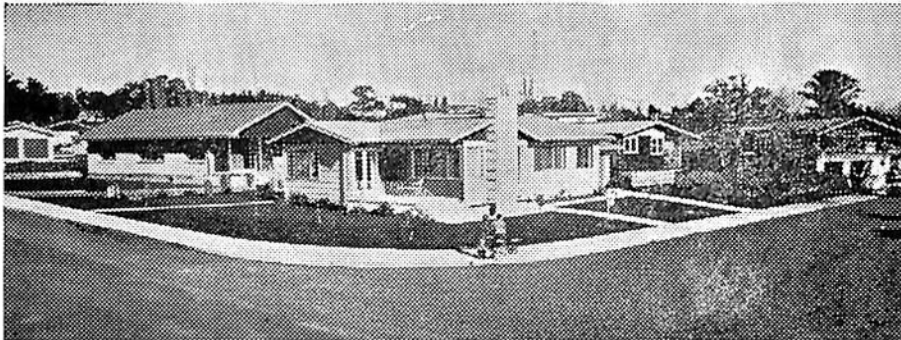
J. E. (Jon) YOUNG. Lock forward. Ruawai Club. 26 years. 6ft 1½in. 15st 8lb. Entered the North Auckland squad late in 1967 and has to date played five representative matches. A good lineout man and a long range goal-kicker. He is a fitter and welder.

P. (Paul) YOUNGER. Reserve centre-threequarter. Dargaville Club. 28 years. 12st 7lb. 6ft. A steady and extremely reliable player who tackles hard and excels in the timing of his passes. He is a farmer.

THEY'RE POPPING UP EVERYWHERE...



***HOLTS HOMES** that is!



FINEST Materials

From the foundations up **HOLTS HOMES** are solid and soundly constructed . . . all material used is first class. Only approved Master Tradesmen build **HOLTS HOMES!**

SAVINGS

HOLTS efficiency and modern building methods result in greater overall savings. **HOLTS** pass these savings on to you. Plus the benefits of better quality control at every stage of construction.

Complete SERVICE

Holts have plans to suit all . . . homes large or small, contemporary or traditional. Our Real Estate Department offers all the necessary information you require to become a proud home owner!

HOLTS HOMES

Enquire now to any branch of Robert Holt & Sons Ltd. — Throughout the East Coast, or for **FREE BOOKLET**, Send to P.O. Box 146, Napier.

Hawke's Bay Points Scorers this Season

	P.	T.	C.	D.G.	Pts.
I. R. Bishop	9	-	8	-	43
P. R. Carney	7	1	5	-	34
W. L. Davis	-	8	-	-	27
J. P. Dougan	-	1	-	4	15
M. D. Duncan	-	3	-	-	9
I. R. MacRae	-	4	-	-	12
B. D. M. Furlong	-	-	-	2	6
H. Meech	-	2	-	-	6
H. J. Paewai	-	2	-	-	6
D. G. Curtis	-	1	-	-	3
K. R. Tremain	-	2	-	-	6
R. S. Abel	-	1	-	-	3
M. R. S. Natusch	-	1	-	-	3
D. B. Smith	-	1	-	-	3
K. K. Crawford	-	1	-	-	3
	16	29	13	6	179

Other Representative Matches

Today: Tonga v. Bay of Plenty, Rotorua; Otago v. Combined Services, Dunedin.

Saturday: North Island v. South Island, Wellington; Bush v. Wellington, Pahiatua; Canterbury v. Wellington, Christchurch; Canterbury v. Mid-Canterbury, Christchurch; Waikato v. Auckland, Auckland; Hawke's Bay

v. East Coast, Tokomaru Bay; Wanganui v. Horowhenua, Wanganui; South Canterbury v. North Otago, Oamaru; Manawatu v. Taranaki, Palmerston North.

Hawke's Bay's 1969 Match Record

v. Wairarapa	17	-	14
v. Auckland	6	-	3
v. Counties	17	-	9
v. Wairarapa*	18	-	11
v. Manawatu*	22	-	6
v. King Country*	19	-	16
v. Bay of Plenty	20	-	14
v. Waikato*	27	-	13
v. Wellington*	14	-	6
v. Poverty Bay	19	-	14
Points	179		106

SEPTEMBER

- 10 v. North Auckland (Napier)*.
- 13 v. East Coast (Tokomaru Bay).
- 20 v. Taranaki (Napier)*.
- 27 v. Canterbury (Napier)*.

* Ranfurly Shield.

Schwepesmanship

Opens up

Great

Possibilities

The simple art of being a good mixer

.....
For that "After the Game"

Celebrations have your supplies ready . . . Visit

Dalgety-Loan

LIMITED

(Incorporated in England)

WINES & SPIRITS DEPARTMENT

53 DICKENS STREET, NAPIER—FREE DAILY DELIVERY

PHONE 8267 (2 LINES)

Stockists of Popular Brands of WINES, SHERRIES, LIQUEURS. Also ALE
STOUT and LAGER

Agents for OLD GENTRY GIN and THREE BARREL BRANDY

— Also —

WHITE HORSE WHISKY

DELICATE — DELECTABLE — DISTINCTIVE

.....

MMMMMM

THAT . . .

ENTERTAINMENT

THAT . . .

ATMOSPHERE

THAT . . .

LEOPARD



AT THE

ALBION HOTEL—TONIGHT

Your Hosts: DAVID and BARBARA MARKS

.....

Hawke's Bay's Three Tries Against Wellington



Ian MacRae crashes across the line in the arms of Wellington's Graham Williams.

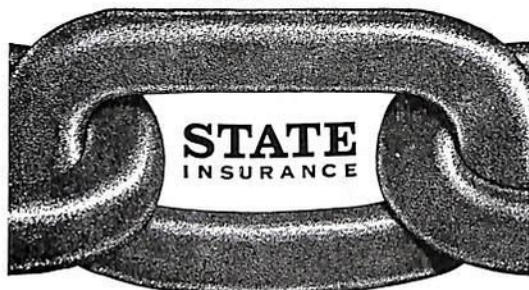


Bill Davis eludes Gerald Kember to score. Hepa Paewai dives past Owen Stephens for a try.

STRENGTH

STABILITY

SERVICE



The key link is a symbol of the strength, stability and security which stands behind every STATE policy.

A FIRE, MARINE or ACCIDENT policy is available to meet your needs.



Men's Swiss Watches

17 JEWEL INCABLOC

Water Protected—Shock Protected—Luminous
Centre Seconds—With Stainless Steel Bracelet

\$14.50

Name Engraved Free

12 Months Guarantee

JENKINS JEWELLERS

EMERSON STREET — NAPIER

(Opposite McGruers)

**Look for this
distinctive
decanter bottle—
costs no more
than any other
gin**

LOCAL DISTRIBUTORS:

T. G. MACARTHY

(HAWKE'S BAY LIMITED)

Cnr Bedford Rd & Douglas McLean Ave
MAREWA

**AVAILABLE AT ALL
HOTELS and BOTTLE
STORES**



**We defy you
to find a
better gin
than
Seagers**

HEARN PRAISES HAWKE'S BAY

"You've seen it all when you've seen a Ranfurly Shield match. You've seen it all and a little more when you've seen the shield holders, Hawke's Bay, at their best."

These comments were made by former English international Danny Hearn after watching Hawke's Bay beat Waikato in the challenge before last.

"In fact", Hearn said, "it was admitted by the Hawke's Bay players after the match that they hadn't played better Rugby in such adverse conditions in the last 18 months.

"You can understand the strength of New Zealand football by investigating this side, its players, and its techniques.

"They were good because they possessed the vitally necessary team spirit built up over a long period of playing together and knowing each other's every whim and fancy.

"Every Rugby player knows that however little or great ability a side has you can move mountains if you have such team spirit.

"This side had team spirit and oodles of confidence in their playing ability.

"They were good because allied to this team spirit they have immense playing ability with large reserves of players which would make any other provincial side green with envy.

"In Tremain they have a captain and a player who is respected not only in his own province or indeed his own country but overseas as well.

"There will be many in Britain who will regret his departure from the international scene.

"He knows the game like the back of his hand and he has the ability to whip a pack into an organised frenzy.

"He totally understands the importance of seeing that the ball is in front of his forwards throughout the 80 minutes and thus he can present a potentially brilliant backline with a constant supply of "good ball".

"With the midfield thrust of Ian MacRae and Bill Davis most defences are going to be exposed more often than not.

"Hawke's Bay is well equipped on the wings and at fullback and so the pressure is able to be taken off MacRae and Davis when required.

"N.Z. critics are too often fond of running down the ability of their three-quarters.

"They constantly suggest that they have never produced runners of the ability of Jack Kyle, Bev Risman or Cliff Morgan.

"This would be true in the glamour position of first five-eighth but it is only because of the pattern of play established in this country.

"The Kyles of this world would not have fitted into a N.Z. pattern.

"But you have devastating runners in the midfield positions. Hawke's Bay has two of them in MacRae and Davis.

"What makes a Ranfurly Shield challenge so different from anything in Britain is a fever which we only associate with Soccer's F.A. Cup ties.

"This total participation by all the inhabitants of an area in one particular match it totally alien to the British Rugby scene.

"Such total commitment may mentally exhaust players after a succession of Ranfurly Shield defences but at the moment it is only looked on as a responsibility to sharpen their play.

"All this produces results not only for Hawke's Bay but for N.Z. Rugby as well.

"Hawke's Bay produced football which was certainly better than an All Black team at its worst and at this time would not have disgraced an All Black XV at or near its best.

"Your system works — if the system is designed to create winning international football—but your system would not work in England because an Englishman is more interested in playing Rugby than playing Rugby for England."

NEW ZEALAND'S TOP REFEREE

In Mr J. P. (Pat) Murphy North Auckland has probably New Zealand's top Rugby referee.

At least he has refereed far more Test matches (13) than any other New Zealander.

Mr Murphy, who is in Napier as a spectator at today's game, has a genius for inconspicuous firmness.

A former Wellington, Auckland and North Auckland loose forward he is now a chartered accountant in Whangarei. He is also secretary of the Northland Trotting Club.

Midget Match

TECH TIGERS

(Red)

D. Morgan, R. Clark, M. Anderson, C. Cook, J. Laurent, R. Hellyer, M. Baird, A. Double, R. Bulled, S. Ireland, P. Parslow, C. Brown, G. Spicer, S. Barrett, B. Bell, C. Mitchell, G. Campbell.

TARADALE JAGUARS

(Maroon and Black)

G. Julian, S. Lineham, T. Ngapira, P. Fry, S. Henry, K. Callinicos, B. Reiper, W. Person, D. Beams, B. Howell, K. Buglas, S. McGregor, B. O'Brien, R. Garner, G. Coker, M. Kepka, T. Arlidge.

2.15 p.m. (5min. halves)

.....
LIKE THE BAY—LEAD THE WAY



FORD TRACTORS and TRUCKS

● ESCORT

● CORTINA

● ZEPHYR

● FALCON

SOUTH PACIFIC MOTORS LTD

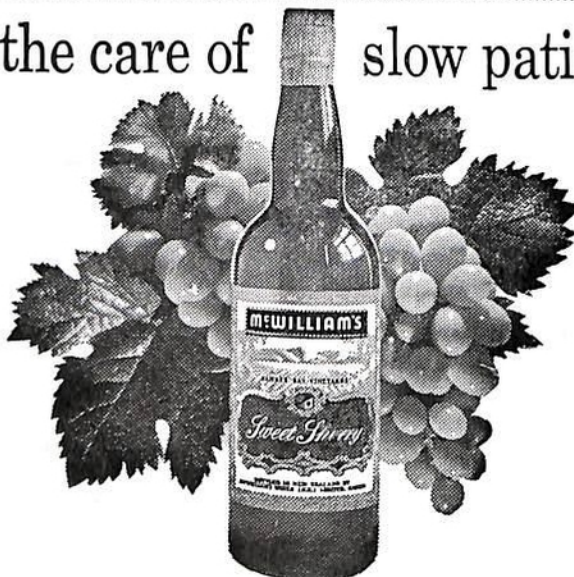
Top of the Town—Hastings Street
NAPIER



WHERE PART OF THE DEAL
IS SERVICE

L.M.V.D.

.....
Rich with the care of slow patient ageing



**McWILLIAM'S
WINES**

CURTAIN-RAISER

McLEAN PARK

12.45 p.m.

Waiouru Cadets

15 A. Pegg
12 A. Fleming
13 J. Porter
11 K. Stanley
9 K. Phillips
8 R. Demster-Rivett
4 D. Olsen
5 S. Belcher
3 P. Robinson
2 B. Lepper
14 R. Alty
10 A. Walker
7 C. Frost
6 B. Herbert
1 J. Smith

Reserves—16 T. Byrne, 17 G. Tuataroa,
18 C. Fremlin, 19 B. Gear.

Napier 3rd Grade

(Black and White)

15 J. Dellow
14 W. Ellsmore
12 K. Hogan
11 G. Evans
8 D. Meredith
7 J. Martin
5 R. Ashcroft
3 P. McIvor
13 I. Rawnsley
10 M. Mewburn
9 L. Cameron
6 R. Young
4 G. French
1 K. O'Connor
2 C. Nolan

Reserves—16 J. Porter, 17 G. Hart, 18
R. Cribb, 19 G. Nielson, 20 A. Wright.

Music: NAPIER CITY BAND (Musical Director: K. Aiken-Jones; Drum Major: D. G. Lipp).

Ahuriri Tavern

After match comfort at its best.
Consume some Leopard while you rest.
Space galore in all the bars.
Ample parking for your cars.

“C’MON THE BAY”



PETER TREHEY, Licensee

ELEVEN

C'MON THE BAY

McKEARNEY & CO.

WINNERS IN AUCTIONEERING AND REAL ESTATE SELLING
VERSUS

— THE HOME SEEKERS —

For all your needs in Good Household Furniture
and all Real Estate Requirements.

McKEARNEY & CO.

(M.R.E.I.N.Z.)

KARAMU RD. NORTH • HASTINGS



HAWKE'S BAY'S OWN
— and —
NEW ZEALAND'S BEST
ICE CREAM AND FROZEN FOODS

Peter Pan

TOURIST MOTORS LTD.

L.M.V.D.

offer THE GREAT NEW

Chrysler Valiant

CALL ON US IN . . .

NAPIER — HASTINGS — WAIPUKURAU

2.30 p.m.

C'MON
THE
BAY

HOME OF



OF HASTINGS

McLEAN PARK

NORTH AUCKLAND

(Cambridge Blue)

- | | |
|-----------------|-------------------|
| 15 R. S. Trigg | 13 L. J. Bradley |
| 14 D. Panther | 12 R. R. Jones |
| 11 J. E. Morgan | 10 B. L. Going |
| 8 L. P. Haddon | 9 S. M. Going |
| 7 D. W. Hewitt | 6 M. Robinson |
| 5 J. E. Young | 4 B. Holmes |
| 3 P. B. Mac | 2 F. J. Colthurst |
| | 1 R. A. Guy |
- Reserves—16 H. W. Carey, 17 P. Younger, 18 T. McDermott,
19 T. P. Sullivan, 20 F. T. Morgan, 21 M. Sloane.

HAWKE'S BAY

(Black and White)

- | | |
|-------------------|---------------------|
| 15 I. R. Bishop | 13 D. B. Smith |
| 14 M. G. Duncan | 12 W. L. Davis |
| 11 I. R. MacRae | 10 B. D. M. Furlong |
| 8 G. A. Condon | 9 H. J. Paewai |
| 7 J. P. Rumball | 6 K. R. Tremain |
| 5 K. K. Crawford | 4 R. S. Abel |
| 3 N. W. Thimbleby | 2 A. Meech |
| | 1 H. Meech |
- Reserves—16 P. R. Carney, 17 M. A. Thomas, 18 J. P. Dougan,
19 D. G. Curtis, 20 M. R. S. Natusch, 21 M. J. O'Malley,
22 G. T. Wiig, 23 P. D. Pratt, 24 R. M. Robinson,
25 T. Davis.

Referee: Mr A. G. DERBY (King Country)



JAMS

Great Energy

Food For

Great

Athletes



The Biggest
BALLROOM
in the Bay!



TONIGHT TONIGHT

DANCE DANCE

VISITORS—

You're Assured of a
Welcome on Board the
Luxurious

"M.V. TOP HAT"

80c • Dancing • Variety • 80c

Men . . . Ties MUST be Worn. Jeans Prohibited.

MURRAY ROBERTS & CO. LTD.

PHONE 8412 — TENNYSON ST. NAPIER

EXECUTIVE AGENTS FOR

SHAW SAVILL and ALBION CO. LTD.

ONE CLASS "NORTHERN STAR", "SOUTHERN CROSS",
"ARANDA", "AKAROA" and "ARAWA" to and from
Southampton via Australian Ports and South Africa via
Panama and Caribbean Ports.

also Agents for

— ALL LEADING TOUR OPERATORS —

VISITORS —
WELCOME TO NAPIER

Enjoy the HERBERT Hospitality at the

TERMINUS HOTEL

(David and Colleen Herbert)

Cool Draught Leopard Ale Available in all Bars
CHILLED LEOPARD FLAGONS AND ALL BRANDS OF
BOTTLED BEER STOCKED

HIGH CLASS—LOW TARIFF ACCOMMODATION

MINI TANKER AVAILABLE — Phone 7980

WESTINGHOUSE

Manufactured in New Zealand by . . .

BEGLEY INDUSTRIES LTD.

(Under licence to Westinghouse International Electric Co. U.S.A.)

- AUTOMATIC ELECTRIC COFFEE MAKERS
- CABINET ELECTRIC CLOTHES DRYERS
- ELECTRIC FLOOR POLISHERS
- ELECTRIC PANEL HEATING
- TEFLON COATED ELECTRIC FRYPANS
- FRACTIONAL H.P. ELECTRIC MOTORS
- MOULDED CASE CIRCUIT BREAKERS

BEGLEY INDUSTRIES LTD.

Taradale Road, Napier — Phone 36-029

MASONIC HOTEL

A WARM WELCOME TO ALL RUGBY SUPPORTERS

— STANDARD ALE ON TAP —

EXCELLENT CUISINE

LUNCH — — \$1.25

DINNER — — \$2.50

Phone 8689 for Table Reservations

Marine Parade



Napier

THE BRAINS BEHIND NORTH AUCKLAND

Thirty two years ago Mr Ted Griffin, now the brains and force behind the powerful North Auckland team, and Mr Bob White (then a brilliant Hikurangi, Whangarei and North Auckland winger) transferred to Hawke's Bay.



They went down at the invitation of Mr Charlie Robbins, a former Whangarei and North Auckland five-eighths, to play for his club team.

Although there were four All Blacks in the Hawke's Bay pack — Jackson, Dalton, Reid and Bowman — Mr Griffin was selected to lock the scrum with Tori Reid.

In all Mr Griffin played 10 games for Hawke's Bay. One of these was against Auckland at Eden Park and Hawke's Bay won 9 - 5 to record its first-ever win on the famous Auckland ground.

By injuring an ear in that fixture, Mr Griffin had to withdraw from the team that met the mighty Springboks.

Mr Colin Le Quesne, present Hawke's Bay selector, played for the Bay the year before and the year after Mr Griffin was there.

The Hawke's Bay club team, for which three former Northlanders turned out, won 16 of its 17 matches.

In 1948 Mr Griffin succeeded Mr Archie Sowman as North Auckland sole selector-coach — a position he has held ever since apart from four years (1953 - 56) when he was on the North Island panel.

The first team he sent out after the Ranfurly Shield was the great 1950 combination led by Johnny Smith which beat South Canterbury 20 - 9.

In 1951 his side beat off challenges from Bay of Plenty and Thames Valley before going down 3 - 6 (two Don Clarke penalty goals from the Rugby Park mud) to Waikato.

In 1953 North Auckland went to Hamilton in an effort to regain the trophy but Waikato turned back the challenge 24 - 5.

Mr Ted Griffin, the 57-year-old mentor of the North Auckland Rugby team which takes the field today, is himself a former Hawke's Bay representative.

At that time Mr Griffin was on the North Island panel.

He was still in higher company two years later when Northland made its ill-fated jaunt to Christchurch — and lost 11 - 39 to Canterbury.

Mr Griffin had the North Auckland reins again in 1958 when the side went down 3 - 14 to Taranaki.

Mr Griffin's next Ranfurly Shield venture was in 1960 and this time it was a successful one.

His team, captained by Ted Thompson, beat Auckland 17 - 11.

After beating off Poverty Bay 24 - 3, Northland lost the shield to Auckland (3 - 6) 11 days after bringing it north.

That's the last North Auckland has seen of the shield.

In 1961 Auckland beat North Auckland 26 - 11, in 1962 Auckland beat North Auckland 8 - 3 and in 1964 Taranaki, thanks to four dropped goals, turned back a determined North Auckland challenge 12 - 8.

Thus Mr Griffin's teams have:—

- Twice lifted the Ranfurly Shield (1950 and 1960). With any luck at all, another triumph would have been chalked in 1964.
- Beaten France and Australia and given the mighty Springboks and the British Lions terrific battles.
- More than held their own with star-studded Auckland sides in annual matches (16 wins, 14 losses and 3 draws).
- Registered 90 wins and 8 draws in the 139 matches (scoring 2038 against 1191) since he took over as selector again in 1956.
- In the same period scored more points each season than the opposition with the exception of 1959 when the points for were 128 and against 129.

NORTH AUCKLAND'S FINE '69 RECORD

North Auckland has a fine record this season. In seven matches they have won six and drawn one. They have amassed 170 points and have only had 31 scored against them.

Their record is:—
Beat Counties, 25-6.
Beat Counties, 5-0.
Drew Auckland, 3-all.
Beat Bay of Plenty, 28-11.
Beat Thames Valley, 24-0.
Beat Southland, 38-6.
Beat Tonga, 47-5.

.....

It's all part of the game . . .



TEAMWORK that is. The team at the **Hawke's Bay Electric Power Board** are at your service. Call in and see them. Discuss your electrical requirements with their trained advisory staff.

**They Specialise in After Sales Service
of All Home Appliances**

P **HAWKES BAY ELECTRIC
POWER BOARD**

NAPIER — MAREWA — HASTINGS

Before and After the Shield Game
Our "Standard" Always the Best

At the
ONEKAWA HOTEL
TARADALE ROAD

PLENTY OF PARKING — COMFORTABLE and ENTERTAINING

ANDY CURTIN (Licensee)

THE
NAPIER - WELLINGTON
TRANSPORT CO. LTD.

"Your Goods Travel While You Sleep"
(The Secret of Our Success)

Direct Freight Operators From WELLINGTON to
NAPIER, HASTINGS and WANGANUI
and VICE VERSA

Address—Head Office: STATION STREET, NAPIER (Phone 4539 — 3 lines)
Hastings Branch: KING STREET, HASTINGS (Phone 69-115)
Wellington Branch: THORNDON YARDS (Phone 71-689 — 6 lines)

50th ANNIVERSARY

1970 marks the 50th anniversary of the formation of the North Auckland Rugby Football Union.

To celebrate the occasion in a fitting manner, it is proposed to hold functions during the weekend of June 18 to 21, 1970.

This will coincide with the Prince of Wales Cup at Whangarei on June 18 and the North Auckland v New Zealand Maoris on June 20. A souvenir booklet will also be published.

The union would like to hear from as many of our past players, officials and referees as possible, and it would be grateful if readers of this programme could bring this notice to the attention of anyone whom they know has been connected with North Auckland Rugby.

These ex-North Aucklanders are asked to get in touch with the Secretary, North Auckland Rugby Union, Box 584, Whangarei.

AN OLD MAGPIE RETURNS

Mr Wattie Barclay of Waitangi, currently president of the North Auckland Rugby Union, is an old Magpie who returns to the McLean Park nest today.

Back in 1927 Mr Barclay was temporarily skipper of the Hawke's Bay team which beat Wairarapa 21-10 in the Battle of Solway.

And after the game he was the subject of an appeal to the New Zealand Rugby Union—an appeal that resulted in Hawke's Bay having the shield taken from it.

Mr Barclay played as a five-eighths but during that Battle of Solway (described by one critic as quite up to standard as a "slaughterhouse rules display") the Hawke's Bay captain Maurice Brownlie and his Wairarapa counterpart Quentin Donald, both All Blacks, were given marching orders by referee Mr Bert McKenzie.

So Mr Barclay moved to wing forward and took over as skipper.

That year marked the end of Hawke's Bay's first great run of Ranfurly Shield triumphs.

Hawke's Bay was quite happy to bid farewell to the shield when it lost to Wairarapa early in 1927 but it wasn't like that before the old dynamic spirit got stirred up—especially when it was rumoured that a Wairarapa player had boasted that he had "sent Bert Grenside to hospital".

So 10,000 people crammed into Solway Park—a ground fashioned to hold 5000—for the return encounter.

Arms flew about like windmills, Brownlie and Donald were sent off and later exonerated (McKenzie spoke of "whitewashing" and resigned from the referees' association).

But that was only the start of the fun.

Doubts about Mr Barclay's residential qualifications were raised—he had been living in Auckland earlier in the season.

It was ascertained that he had been in Napier 15 days before the game and that for provincial matches the residential qualification was 14 days.

Then it was discovered that for Ranfurly Shield matches the restriction was 21 days . . . so Wairarapa protested to the NZRU and the protest was upheld.

Hawke's Bay, feeling the protest to be "a stab in the back", appealed.

Mr Norman McKenzie, that grand old man of Hawke's Bay Rugby, told the NZRU "that we will lodge an application for an injunction against your decision and obtain a ruling from the Supreme Court. Until that is settled the shield stays where it is."

Eventually, six weeks after the game, the shield was handed to Wairarapa.

Mr Barclay started his Rugby career as a breakaway for Southern Hawke's Bay in 1914.

In 1929 his job with the Forestry Department took him to North Auckland.

He's been there ever since. In 1954 he was North Auckland sole selector and until this season served for a number of years as New Zealand Maori selector.

.....

The Napier Harbour Board

*Invites YOU to invest NOW
in their Trustee Security Stock*

**THE PORT OF NAPIER IS ONE OF NEW
ZEALAND'S MAJOR EXPORT PORTS. HAND-
LING 900,000 TONS OF CARGO IN THE
LAST FINANCIAL YEAR.**

**FUTURE DEVELOPMENT INCLUDES NEW
OVERSEAS BERTHS AND NEW CARGO
HANDLING AREAS.**

YOUR MONEY CAN HELP

For Further Details Apply to The

**NAPIER HARBOUR BOARD
TELEPHONE 8684
P.O. BOX 166
NAPIER**

Tackling Lapses

While the record shows that Wellington only scored one try against Hawke's Bay in the last Ranfurly Shield challenge, the tackling of the Bay team on some occasions was woeful.

Even the most patriotic supporters were left aghast when Wellington fullback Gerald Kember twice cut merry capers practically right through the Bay team.

Admittedly, Kember was in brilliant weaving form, but it was surely amazing and a source of anguish to see him make so much ground past so many defenders.

Wellington number eight Andy Leslie, who at this stage would appear to be a definite prospect for the South African tour next year, also featured in some devastating runs mainly because of weak tackling.

* * * *

Kember, the raw-boned youth who was originally brought into the All Blacks as a reserve second five-eighths because he appeared to have a similar style to Ian MacRae, is sadly miss-placed at fullback in the Wellington team.

From Hawke's Bay's point of view it was, however, fortunate that he was not in a position to use his undoubted attacking ability.

Scoring Spree Mounts

Hawke's Bay's Ranfurly Shield scoring spree is continuing to mount.

After the last shield match against Wellington the all-time Hawke's Bay shield tally of points rose to 1332. Of this figure 100 points have been scored in five games this season.

Hawke's Bay now has a lead of 74 points over Auckland, the previous record shield points scorer. And, on the debit side it has only had 558 points scored against it, compared with Auckland's 767.

Of the 64 shield matches Hawke's Bay has played, it has won 48, eight behind Auckland's record tally of 56.

Since winning the shield from Waikato in 1966, Hawke's Bay has repulsed 21 challengers, five short of that achieved by Auckland between 1960 and 1963.

Hawke's Bay's Ranfurly Shield record is:

	P.	W.	L.	D.	F.	A.
1904 - 21	4	-	4	-	14	54
1922 - 26	25	25	-	-	729	213
1927 - 33	4	1	3	-	44	44
1934	4	3	1	-	85	42
1935 - 65	6	-	5	1	38	66
1966 - 69	21	19	-	2	422	139
Totals	64	48	13	3	1332	558



Best of Luck to the Bay Team From . . .

Hastings Progressive Builders . . .

WHEN BUILDING . . .

THE SMALLEST HOUSE OR

THE LARGEST BLOCK OF FLATS

CONSULT FIRST

J. C. MACKERSY LTD.

BUILDERS — CONTRACTORS — JOINERY MANUFACTURERS

KAIAPO ROAD, HASTINGS — PHONE 88-152

The Bay's Leading Builders!

HAYNES LTD.

WHERE THE BEST COSTS LESS



NAPIER'S LEADING BUTCHERS FOR THE PAST 60 YEARS

HASTINGS STREET, MAREWA, TARADALE and MARAENUI

**Symbolising
the best
in insurance**



**NORWICH UNION
LIFE INSURANCE SOCIETY**

**NORWICH UNION
FIRE INSURANCE SOCIETY LTD.**

Norwich Union Building, Hastings Street, Napier

BRANCHES AND REPRESENTATION THROUGHOUT NEW ZEALAND.

MOST FAMOUS OF ALL

Most famous of all North Auckland Rugby forwards has been the steamroller flanker Peter Jones, or, if you like, "Pedro" or "Tiger".

Captain of North Auckland for several seasons, Peter, who still lives in the Far North, became immortal as the result of a sensational try he scored against the Springboks in the fourth Test at Eden Park in 1956.

At the age of 18 he played for Johnny Smith's triumphant North Auckland Ranfurly Shield team in 1950.

He led the North Auckland team which beat the French in 1961 and he scored many fantastic tries in inter-provincial matches.

Peter was at his best when he was playing for "Ted" — North Auckland's sole selector-coach, Mr Ted Griffin.

On the field he was a powerhouse — off it a meek and likeable giant.

The story of a Sunday benefit match in Auckland, from which an injury caused his withdrawal, is always told . . .

The ground announcer said: "As this is a friendly game Peter Jones will not be playing."

And then there was the time, following the 1956 triumph over the Springboks (the late call which went out to Jones, Don Clarke and Kevin Skinner resulted in New Zealand winning the series) when asked by a radio announcer how he felt, he replied in forcibly simple terms that — to his consternation — made radio listeners all over the Dominion rock with laughter.

Relax after the Game . . .

SEE W. & K. for a complete selection of New Zealand and imported Ales, Wines, Spirits and Lagers.

All available at Wholesale Prices!

REMEMBER: You can buy New Zealand Wines in single bottle lots at W. & K. Complete your relaxation with Wines and Spirits from W. & K.

Take advantage of our Saturday hours. Wine & Spirit Department opens on Saturday mornings from 9-12.

W&K WILLIAMS and KETTLE LTD.

Taradale Road — ONEKAWA — Phone 39-185



TEAM STATISTICS

HAWKE'S BAY

NORTH AUCKLAND

	Age	Height	Weight		Height	Weight	Age
I. R. Bishop	26	5 11½	12 3	T. McDermott	5 9	12 3	21
P. R. Carney	22	6 0	13 0	L. J. Bradley	5 10	11 0	20
M. G. Duncan	21	6 1	13 10	H. W. Carey	5 6	11 0	25
D. B. Smith	25	5 10½	11 0	F. J. Colthurst	6 0	15 6	30
D. G. Curtis	25	5 9½	12 3	B. L. Going	5 9	13 0	23
W. L. Davis	26	5 11½	12 12	S. M. Going	5 7	12 0	25
I. R. MacRae	26	6 2	14 0	R. A. Guy	6 2	15 6	28
J. P. Dougan	22	5 7½	11 3	L. P. Haddon	6 1	14 8	29
M. R. S. Natusch	18	5 10	13 0	D. W. Hewitt	6 2	14 2	31
B. D. M. Furlong	24	6 0	13 7	B. Holmes	6 2	15 4	23
M. A. Thomas	22	5 6	10 7	R. R. Jones	6 0	14 6	23
H. J. Paewai	21	5 7	11 9	J. S. Kirtlan	6 2	14 5	28
G. A. Condon	24	6 2	14 3	P. B. Mac	6 2	15 7	28
T. Davis	22	5 11	14 4	J. E. Morgan	5 10	12 7	23
K. R. Tremain	31	6 2	16 7	F. T. Morgan	5 10½	13 10	22
J. P. Rumball	26	6 1	13 12	D. R. Panther	5 10	13 0	23
P. D. Pratt	24	6 1½	12 6	M. J. Robinson	5 11	14 8	30
K. K. Crawford	26	6 3	17 7	T. P. Sullivan	5 10	14 0	22
R. M. Robinson	20	6 7	16 7	R. Trigg	5 8½	11 4	23
R. S. Abel	33	6 4½	16 7	J. E. Young	6 1½	15 8	26
N. W. Thimbleby	30	5 10	15 7	P. Younger	6 0	12 7	28
G. T. Wiig	21	6 3½	15 10				
H. Meech	27	6 3	15 7				
M. J. O'Malley	27	5 11	13 0				
A. Meech	29	5 10½	13 7				

CHARTER

COACHES

For Your Club's Next
Trip Away Choose
From

New Zealand's Largest

Range of Comfortable Coaches!

8-SEATERS — 19-SEATERS — 29-SEATERS — 33-SEATERS
37-SEATERS — 43-SEATERS — 47-SEATERS

There's a Vehicle in Our Fleet to Suit Any Party!

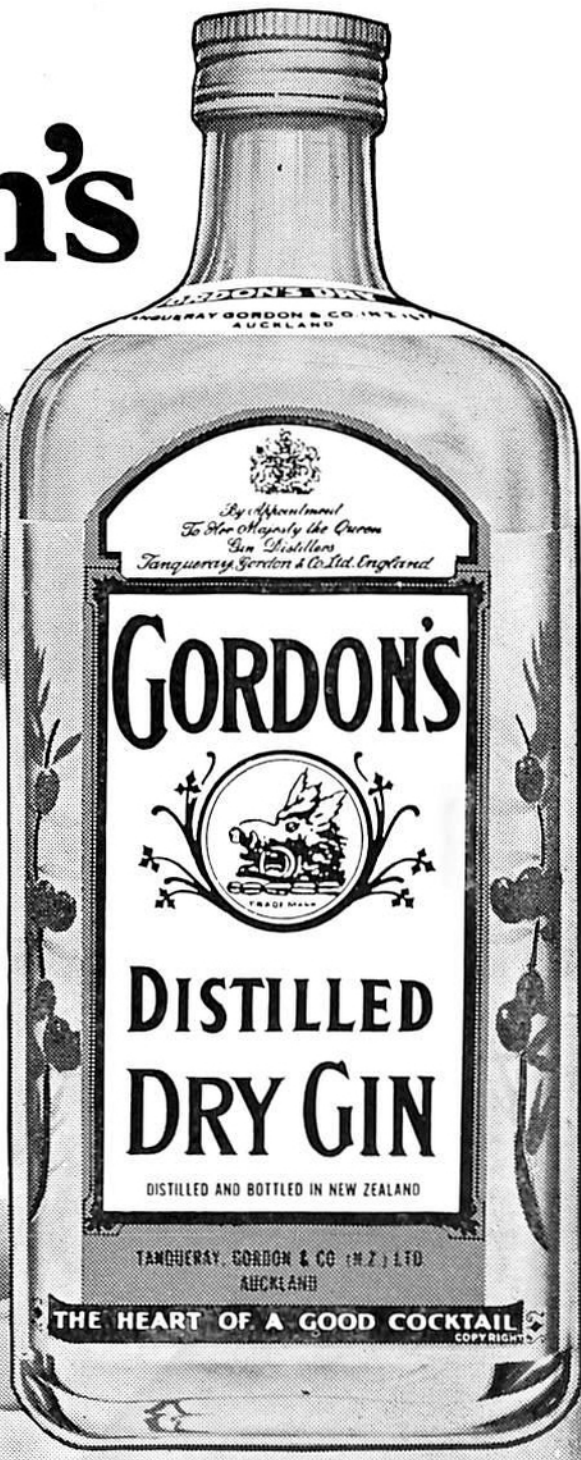
HAWKE'S BAY MOTOR CO. LTD.

HASTINGS AND NAPIER



Mix with Gordon's

Mix Gordon's with Tonic,
Orange, Lemon or Cola, or
anything else you
fancy ...people find
they're made
for each other



LOCAL DISTRIBUTORS:

HARDWICKE and ROBERTSON (H.B.) LTD.

13 CARLYLE STREET, NAPIER

PHONE 7101

*There's a time
and a place in your life
for the full-bodied
taste of a great
canned beer*



LEOPARD RED LABEL STRONG DRAUGHT BEER

BREWED AND CANNED BY LEOPARD BREWERY LTD. HASTINGS

Go hunt a Leopard—the really great beer



1935