

McLEAN PARK, NAPIER

AUGUST 30th, 1969

SOUVENIR PROGRAMME 20c

RANFURLY

SHIELD  
RUGBY



WELLINGTON  
HAWKE'S BAY



---

# World's largest selling most wanted King Size Virginia

All over the world more people  
smoke Rothmans than any  
other King Size Virginia.  
The reason is not hard to find:  
Rothmans extra length, finer filter  
and the best tobacco money  
can buy give you that cooler,  
smoother, more satisfying taste.  
Rothmans King Size really satisfies



MANUFACTURED BY ROTHMANS IN NEW ZEALAND, ALSO IN GREAT BRITAIN,  
AUSTRALIA, CANADA, HOLLAND, SOUTH AFRICA, MALAYSIA, AND EIRE





## Chairman's Welcome

The giants of New Zealand provincial Rugby meet today in what promises to be the match of the season.

Both teams have been carefully nurtured and the public should be treated to a champagne exhibition of Rugby at its best.

To the Wellington team and to the Wellington officials we extend a hearty welcome and hope that they and their thousands of supporters will enjoy their stay in the Bay.

May it be a grand game with the best team "bringing home the bacon".

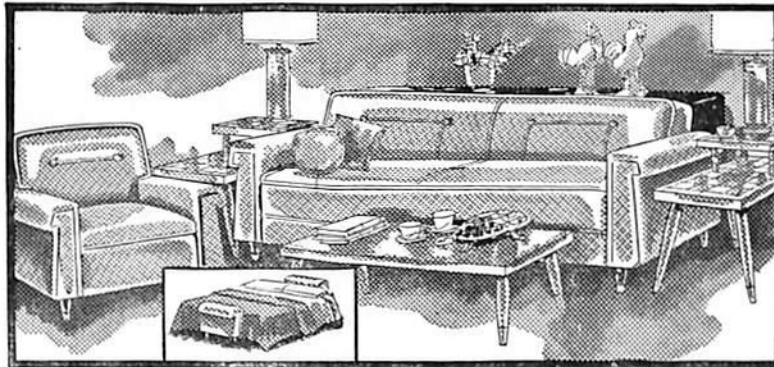
At this stage, however, I think it is desirable that I should repeat the Hawke's Bay motto:

**"TO HAVE AND TO HOLD"**

W. S. BRAMWELL,  
Chairman H.B.R.F.U.

---

## FOR FINE FURNITURE . . .



## C. E. ROGERS and CO. LTD.

EMERSON STREET, NAPIER

— PHONE 7017



Your  
**ECONOMY DRIVE**

begins with a friendly  
**CALTEX DEALER**

**CALTEX BORON**  
and  
**CUSTOM FIVE STAR**  
**Motor Oil**

— save money  
every mile you drive!



**DB** for **ME**  
*Everytime*



Enjoy it for its flavour — its consistency — its mellow satisfaction. Enjoy it in the strength you prefer. The beer you like — chosen from New Zealand's favourite seven.

**D.B. WAITEMATA**  
**PRODUCTS**

From the brewery that gives you the world's best beer.

---

## WELLINGTON PEN PORTRAITS

**G. F. Kember:** One of the finest utility backs in the country. Ideally suited to the full-back game under the new law. Toured Great Britain and France as a utility in 1967.

**J. F. Karam:** A 17-year-old full-back prodigy. Scored 100 points in his first club season. A Centurion Colts representative last season.

**M. O. Knight:** Grand club season, scoring record 26 tries in his first year in Wellington Rugby. Toured Australia last year with the All Blacks.

**O. G. Stephens:** Can be a devastating runner but has failed to reproduce the form which carried him into the third Test against France last year.

**G. R. Weinberg:** A very resourceful wing threequarter. Deceptive runner with fine centre kick. A former New Zealand Universities representative.

**B. L. Hill:** A sharp-running midfield back who is a fine servant of his threequarters. Back in representative Rugby after lay-off for studies. Figured prominently in Wellington triumph over British Isles in 1966.

**R. L. Gray:** A robust, long-striding centre whose length of leg belies the sharpness of his take-off.

**M. Sayers:** Affected by a severe illness during the off-season, has been only a shadow of the player plucked from virtually obscurity for the Inter-island match last year.

**M. Blackburn:** Wellington's "Mr Drop." A balanced five-eighth with neat hands and unerringly accurate left boot. Played for New Zealand Maoris against the Tongans this year.

**I. N. Stevens:** One of the brightest half-back prospects in the country. Long passer of the ball and a very dangerous runner. New Zealand Junior representative last season against the Japanese.

**R. M. J. Barlow:** A tall scrum-half, a consistent passer and also dangerous runner.

**A. R. Leslie:** Developing as long-shot candidate for South Africa next year. A very heady No. 8 with fine understanding with Stevens close to the line.

**W. J. Nicholls:** A powerfully-built all-purpose forward. Extremely mobile for his size and a valuable lineout forward towards the back.

**G. C. Williams:** Very fast and most dangerous going forward. Devastating tackler with uncanny anticipation.

**J. H. W. Kirkby:** Honest flanker, solid in a supporting role.

**R. Guy:** Playing the best Rugby of his career. Aggressive lock with great lineout ability.

**P. Delaney:** Great comeback after year away from representative Rugby. Good lineout forward and a solid, non-stop worker in the tight phases.

**R. B. W. Gill:** Strong forward, prop or lock.

**K. F. Gray:** Widely-rated as finest prop in the world today. Has played for New Zealand since touring Great Britain and France in 1963-64.

**G. A. Head:** Developing into a very strong prop. Completes an all-Petone front row with Gray and Abraham.

**T. K. McDonald:** Back in Wellington after a year overseas, during which time he played for Scottish Districts against the All Blacks. Very good scrummager.

**P. W. V. Abraham:** A solid hooker; very honest toiler, dependable around the front of the lineout.

**LIKE THE BAY—LEAD THE WAY**



FORD TRACTORS and TRUCKS

● ESCORT ● CORTINA ● ZEPHYR ● FALCON

# SOUTH PACIFIC MOTORS LTD

Top of the Town—Hastings Street  
NAPIER



L.M.V.D.

WHERE PART OF THE DEAL  
IS SERVICE

Rich with the care of slow patient ageing



## McWILLIAM'S WINES

## Hawke's Bay Points Scorers this Season

	P.	T.	C.	D.G.	Pts.
I. R. Bishop	8	-	7	-	38
P. R. Carney	6	-	3	-	24
W. L. Davis	-	7	-	-	21
J. P. Dougan	-	1	-	4	15
M. G. Duncan	-	3	-	-	9
I. R. MacRae	-	3	-	-	9
B. D. M. Furlong	-	-	-	2	6
H. Meech	-	2	-	-	6
H. J. Paewai	-	1	-	-	3
D. G. Curtis	-	1	-	-	3
K. R. Tremain	-	1	-	-	3
R. S. Abel	-	1	-	-	3
M. R. S. Natusch	-	1	-	-	3
D. B. Smith	-	1	-	-	3
<b>Total</b>	<b>14</b>	<b>22</b>	<b>10</b>	<b>6</b>	<b>146</b>

## Other Representative Matches

Today: Tonga v. North Auckland, Whangarei; King Country v. Bay of Plenty, Whakatane; Bush v. Manawatu, Palmerston North; Wanganui v. Wairarapa, Wanganui; Nelson-Golden Bay-Motueka v. Canterbury, Motueka; Canterbury v. Buller, Westport; Otago v. Auckland, Auckland; Wellington v.

Horowhenua, Levin; Counties v. Thames Valley, Papakura; Waikato v. Southland, Hamilton; South Canterbury v. North Otago, Timaru; Mid-Canterbury v. Combined Services, Ashburton.

## Hawke's Bay's 1969 Match Record

v. Wairarapa	17	-	14
v. Auckland	6	-	3
v. Counties	17	-	9
v. Wairarapa*	18	-	11
v. Manawatu*	22	-	6
v. King Country*	19	-	16
v. Bay of Plenty	20	-	14
v. Waikato*	27	-	13
<b>Points</b>	<b>146</b>		<b>86</b>

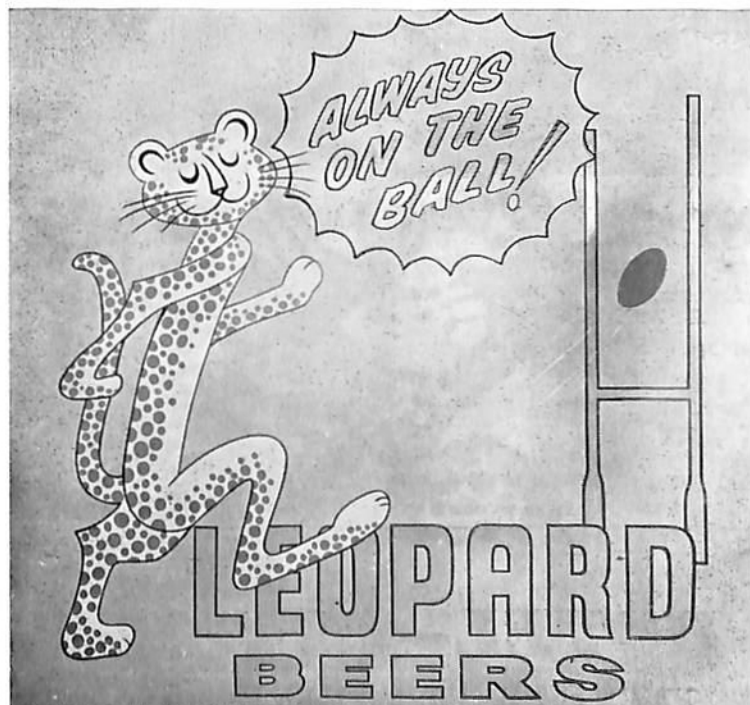
### AUGUST

30 v. Wellington (Napier)\*.

### SEPTEMBER

6 v. Poverty Bay (Gisborne).  
 10 v. North Auckland (Napier)\*.  
 13 v. East Coast (Tokomaru Bay).  
 20 v. Taranaki (Napier)\*.  
 27 v. Canterbury (Napier)\*.

\* Ranfurly Shield.



## CABANA HOTEL

SHAKESPEARE ROAD  
 NAPIER

OUR TEAM AT  
 THE CABANA ARE  
 WINNERS WHEN IT  
 COMES TO HOSPITALITY  
 AND SERVICE.

BE SURE YOU ARE  
 AT THE CABANA  
 AFTER THE GAME.

Your Host  
**JACK HICKEY**

.....  
**For that "After the Game"**

Celebrations have your supplies ready . . . Visit

***Dalgety-Loan***

LIMITED

(Incorporated in England)

**WINES & SPIRITS DEPARTMENT**

53 DICKENS STREET, NAPIER—FREE DAILY DELIVERY

**PHONE 8267 (2 LINES)**

Stockists of Popular Brands of WINES, SHERRIES, LIQUEURS. Also ALES,  
STOUT and LAGER

Agents for OLD GENTRY GIN and THREE BARREL BRANDY

— Also —

**WHITE HORSE WHISKY**

DELICATE — DELECTABLE — DISTINCTIVE

.....

**M M M M M M**

**THAT . . .  
ENTERTAINMENT**

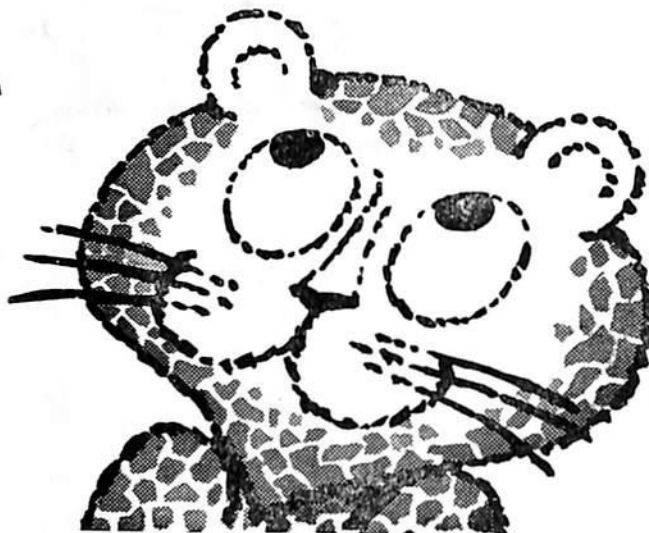
**THAT . . .  
ATMOSPHERE**

**THAT . . .  
LEOPARD**

**AT THE**

**ALBION HOTEL—TONIGHT**

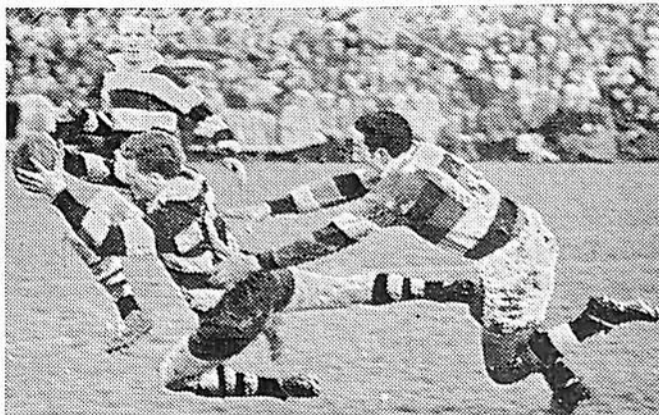
Your Hosts: DAVID and BARBARA MARKS





---

**"FOURMIDABLE" DAVIS TRIES ...**



**... PLUS TWO, AGAINST WAIKATO**



Dennis Smith behind the posts.



Hilton Meech (right) about to score.



# N+Z+I

FIRST IN INSURANCE  
THE NEW ZEALAND INSURANCE CO. LTD.  
Transacts all Classes of Insurance

**FIRE  
MARINE  
ACCIDENT**

**AVIATION  
LIFE**

Also —

**THE LEADING TRUSTEE COMPANY**

Acting as

**TRUSTEES, EXECUTORS and AGENTS**

Hawke's Bay Manager: N. L. PREBBLE. Hawke's Bay Trust Man: H. D. HARKNESS  
Hastings District Manager: K. HALES. Dannevirke Representative: R. B. RITCHIE

**Look for this  
distinctive  
decanter bottle—  
costs no more  
than any other  
gin**

LOCAL DISTRIBUTORS:

**T. G. MACARTHY**

(HAWKE'S BAY LIMITED)

Cnr Bedford Rd & Douglas McLean Ave  
MAREWA

**AVAILABLE AT ALL  
HOTELS and BOTTLE  
STORES**



**We defy you  
to find a  
better gin  
than  
Seagers**

# LOOSE FORWARD FOREVER

By K. R. Hawker

It has often been suggested that if Kel Tremain's prowess and days as a flanker were fast disappearing, then perhaps a lack of pace from yesteryear could readily be compensated for by his playing in a tight forward position.

Tremain has the physique, and ability through his natural Rugby talents to play as, say, either a prop or lock.

I put this question to Tremain when he announced his retirement from International Rugby a few days ago and met with a very prompt denial of the point.

I asked him if in fact he had ever been asked to consider the possibility of playing either as a prop or lock.

"No. I've not been asked and wouldn't want to play in either position.

"I started out as a loose forward and that is the way I wanted to finish up.

"I do not think there is much point in trying to bolster up a fading career by changing positions at this stage.

"I played once as a prop (against Victoria during the 1967 Australian tour) but that was only because I wanted to play and not sit on the bank and watch," Tremain added.

Perhaps Tremain's admirers were clutching at straws in the hope that their hero's day of reckoning could be forestalled. Not so Tremain, his decision to stick with the loose forward role is to be admired.

## WELLINGTON '69 MATCH RECORD

Beat Wanganui, 33-0.  
Beat Wairarapa, 15-8.  
Beat Waikato, 27-15.  
Beat Manawatu, 25-6.  
Lost Wales, 6-14.  
Beat Canterbury, 12-11.  
Beat Taranaki, 20-17.  
Beat Bay of Plenty, 18-8.  
Beat Auckland, 17-13.

Played 9, won 8, lost 1. Points for 173,  
against 92.



## Travel by Newmans

Daily Services to and from  
NAPIER—HASTINGS—PALMERSTON NORTH—HUTT VALLEY—WELLINGTON

Charter Coaches — North and South Island Tours  
FOR COMFORT, CONVENIENCE AND COURTESY

Travel By

**NEWMAN'S COACHLINES**

MUNRO STREET, NAPIER — PHONE 5874

**RENTAL CARS**

**TAKE A TASMAN**

Modern Cars to Suit all Purposes

From a Station Wagon to a Mini

IF YOU WANT TO HIRE A CAR GO TO

**TASMAN RENTAL CARS (Napier) LTD.**

NEWMAN'S BUILDING

MUNRO STREET, NAPIER — PHONE 5874

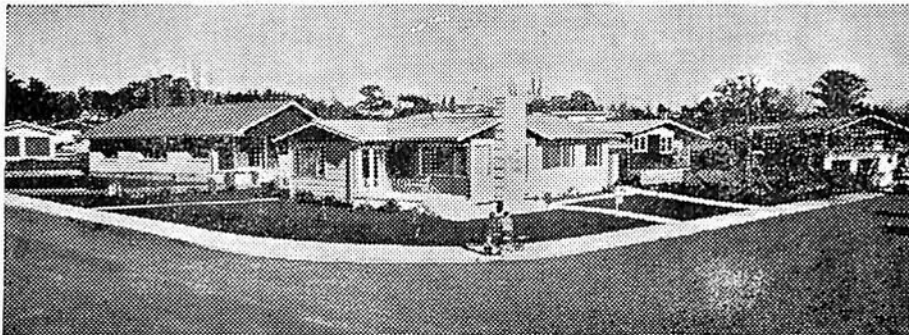


**"ANOTHER NEWMAN'S SERVICE"**

# THEY'RE POPPING UP EVERYWHERE...



**\*HOLTS HOMES that is!**



## **FINEST Materials**

From the foundations up **HOLTS HOMES** are solid and soundly constructed . . . all material used is first class. Only approved Master Tradesmen build **HOLTS HOMES!**

## **SAVINGS**

**HOLTS** efficiency and modern building methods result in greater overall savings. **HOLTS** pass these savings on to you. Plus the benefits of better quality control at every stage of construction.

## **Complete SERVICE**

Holts have plans to suit all . . . homes large or small, contemporary or traditional. Our Real Estate Department offers all the necessary information you require to become a proud home owner!

# **HOLTS HOMES**

Enquire now to any branch of Robert Holt & Sons Ltd. — Throughout the East Coast, or for **FREE BOOKLET**, Send to P.O. Box 146, Napier.



**The Hub of the Plains  
TAKAPAU HOTEL  
TAKAPAU**

YOUR FRIENDLY HOSTS  
BERNARD AND MARJORY KIRSCHBERG  
HAERE MAI HAERE MAI  
**Tui Ale at its Best**



HAWKE'S BAY'S OWN  
— and —  
NEW ZEALAND'S BEST  
ICE CREAM AND FROZEN FOODS

**Peter Pan**

**TOURIST MOTORS LTD.**  
L.M.V.D.

offer THE GREAT NEW

**Chrysler Valiant**

CALL ON US IN . . .  
NAPIER — HASTINGS — WAIPUKURAU

*5th match 19th Success at 2.30 p.m.*

**C'MON  
THE  
BAY**

**HOME OF**



**OF HASTINGS**

McLEAN PARK

**WELLINGTON**

(Black)

- |                  |                            |                             |
|------------------|----------------------------|-----------------------------|
| 15 G. F. Kember  | 12 B. L. Hill              | 13 O. S. Stephens           |
| 14 M. O. Knight  | 11 M. Sayers               | 10 M. Blackburn <i>DG 4</i> |
| 8 A. R. Leslie   | 9 I. N. Stevens <i>T 1</i> |                             |
| 7 G. C. Williams | 5 P. Delaney               | 6 W. J. Nicholls            |
| 3 G. A. Head     | 2 P. W. V. Abraham         | 4 B. Guy                    |
|                  | 1 K. F. Gray               |                             |
- Reserves—16 R. L. Gray, 17 G. R. Weinberg, 18 T. K. McDonald,  
19 J. H. W. Kirkby, 20 R. B. W. Gill.

**HAWKE'S BAY**

(Black and White)

- |                                |                           |
|--------------------------------|---------------------------|
| 15 I. R. Bishop <i>C 3 P 7</i> | 13 D. B. Smith            |
| 14 M. G. Duncan                | 12 W. L. Davis <i>T 2</i> |
| 11 I. R. MacRae <i>T 6</i>     | 10 B. D. M. Furlong       |
| 9 H. J. Paewai <i>T 5</i>      |                           |
| 8 G. A. Condon                 | 6 K. R. Tremain           |
| 7 J. P. Rumball                | 4 R. S. Abel              |
| 5 K. K. Crawford               | 2 A. Meech                |
| 3 N. W. Thimbleby              | 1 H. Meech                |
- Reserves—16 P. R. Carney, 17 J. P. Dougan, 18 M. A. Thomas,  
19 M. R. S. Natusch, 20 D. G. Curtis, 21 M. J. O'Malley,  
22 G. T. Wiig, 23 P. D. Pratt, 24 R. L. Stuart,  
T. Davis.

Referee: Mr K. C. GAWN



**JAMS**

**Great Energy  
Food For  
Great  
Athletes**



**The Biggest  
BALLROOM  
in the Bay!**



**DANCE  
DANCE**

VISITORS—

You're Assured of a  
Welcome on Board the  
Luxurious

**TONIGHT  
TONIGHT**

**"M.V. TOP HAT"**

80c • Dancing • Variety • 80c  
Men . . . Ties MUST be Worn. Jeans Prohibited.

If You've got the block of ice feeling all day  
You need the Golden Warmth of  
**PREMI-AIRE CENTRAL HEATING**

Contact . . .

**J. J. O'CONNOR LTD.**  
ALEXANDRA CRESCENT — HASTINGS

*Bishop 57*

**TARADALE HOTEL**

SLURPERS' PARADISE

STANDARD DRAUGHT  
ON TAP

Prop. F. W. ("Tag") McTAGGET

**TARADALE HOTEL**

---

## **WESTINGHOUSE**

Manufactured in New Zealand by . . .

# **BEGLEY INDUSTRIES LTD.**

(Under licence to Westinghouse International Electric Co. U.S.A.)

- AUTOMATIC ELECTRIC COFFEE MAKERS
- CABINET ELECTRIC CLOTHES DRYERS
- ELECTRIC FLOOR POLISHERS
- ELECTRIC PANEL HEATING
- TEFLON COATED ELECTRIC FRYPANS
- FRACTIONAL H.P. ELECTRIC MOTORS
- MOULDED CASE CIRCUIT BREAKERS

## **BEGLEY INDUSTRIES LTD.**

Taradale Road, Napier — Phone 36-029

---

# **FERNHILL HOTEL**

---

Proprietor: TED BRESNEHAN

**The Only HOTEL in the Area  
That Sells Exclusively  
THE WORLD CHAMPION  
BEER**

# **TUI ALE**

---

## NOT ALL IMPRESSIVE VICTORIES THIS SEASON

Nothing succeeds like success, unless it is excess, and criticism of the Wellington Rugby side this season has been met and countered by the bland reminder that the provincial record in eight matches could hardly be bettered.

Oddly enough, with eight straight wins there is just cause for the critics, none more so than myself, to be silenced. It is true however, that not all the victories have been scored in impressive or conclusive manner.

Still, you can't drown a man if there's no water about and even if there has been a uneasiness about the method of some of the Wellington successes on the provincial paddock the important fact emerges that eight wins in matches isn't a bad sort of record for starters.

The Wellington strength has undoubtedly centred on the strong, robust and mobile pack with experienced men like K. F. Gray, G. C. Williams, B. Guy and P. Delaney giving impetus to young players who have developed with startling significance during the season.

The loose men of the calibre of W. J. Nicholls and A. R. Leslie, complemented by Williams, have been perhaps the feature of the Wellington forward play and a dominating factor in the supremacy the capital city has enjoyed up front.

The lack of midfield thrust has provoked most of, if not all the criticism of this winter but here one must also balance the circumstances as well as the performances.

Although there have been several promising young fullbacks making bright contributions in club matches, none has matured sufficiently or showed that promise is fulfilment in order to earn a place in the Wellington side.

The selector has been forced, as a result, to call on the versatile G. F. Kember, the

This article was written specially for this publication by G. R. David, Sports Editor of "The Evening Post", Wellington.

lad who went overseas with the All Blacks as a five-eighth and returned as a devilish fine fullback.

Playing Kember as the last line of defence has been rewarding and secure but his absence in the key attacking positions has left a certain brittleness that otherwise would have been strengthened.

Mr A. P. Freeman, now in his sixth season as Wellington's sole selector, has invariably held to his policy of retaining the same team, despite setbacks.

True, he has yet to win the Ranfurly Shield for Wellington but his stringent policy, some say it is a dogmatic one, has nevertheless, had fine results including prestige victories over international sides like the 1965 Springboks and the 1966 British Lions.

This season most notable wins so far have been over Canterbury, Taranaki, Waikato, Bay of Plenty and Auckland. Most regrettable loss was to the touring Welshmen.

In almost every instance, the Wellington forwards were the cutting edge of the attack as well as the rapier point of the winning thrust. The backs were orthodox and just a trifle unimaginative but they complemented the work of the pack — which is just about as important as anything else they might have done.

Mr Freeman has aimed at two plateaus this season; the first a climb to consolation, and the second the bid for the summit — a successful Ranfurly Shield challenge.

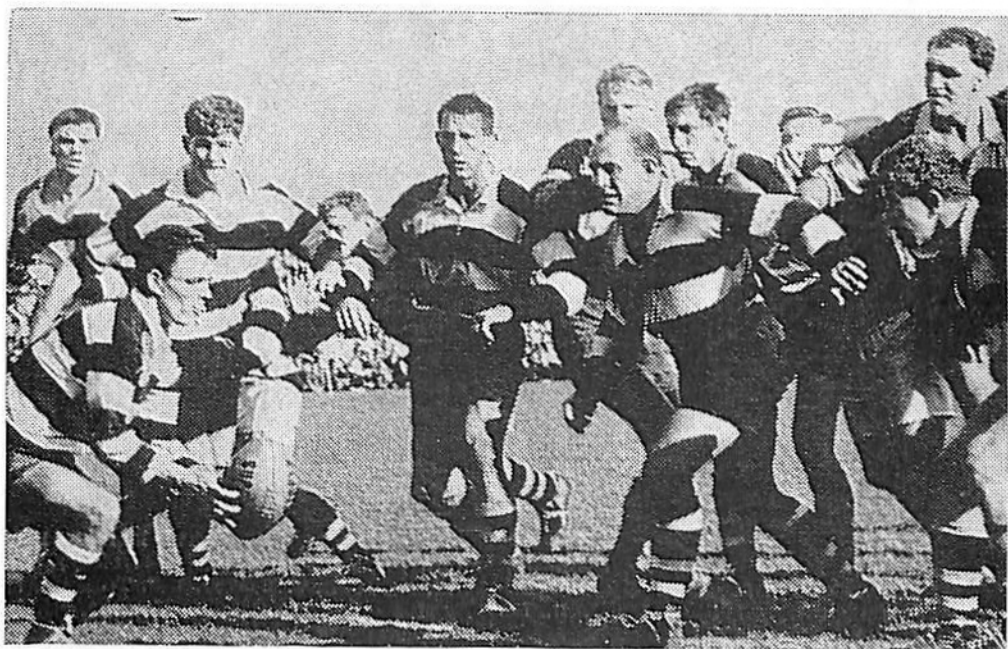
The Wellington side has successfully, if a trifle shakily, achieved the first ascent and, it might be observed, are well prepared for the final climb today.





.....

**It's all part of the game . . .**



**TEAMWORK** that is. The team at the **Hawke's Bay Electric Power Board** are at your service. Call in and see them. Discuss your electrical requirements with their trained advisory staff.

**They Specialise in After Sales Service  
of All Home Appliances**

**P** **HAWKES BAY ELECTRIC  
POWER BOARD**

**NAPIER — MAREWA — HASTINGS**



The Marist 1969 senior Rugby team, co-holders of the Maddison Trophy with Napier O'd Boys, from left: Back row, R. H. Exeter, P. H. Beck, K. E. M. Gibbs, V. L. Hargrave, B. D. M. Furlong, D. B. Buckley, J. R. Smith, D. A. McCuish. Second row: Mr M. McGill (secretary), M. C. Madden, K. J. Parker, G. A. Condon, C. C. Little, P. M. Bryne, B. J. Harker, I. J. Transom, Mr P. F. Primrose (manager). Sitting: Mr J. B. Mahony (chairman), D. E. N. Verschaffelt, Mr F. P. Crotty (coach), N. W. Thimbleby, I. R. MacRae (captain), Mr Keith Falvey (president), M. J. O'Malley, Mr J. Blundell (club captain). In front: A. M. Murphy, G. T. Lenihan, P. J. Hobdell, B. J. Peacock. Absent: J. Beddingfield, A. Johnson, L. Kaye.

**THE**

# **NAPIER - WELLINGTON**

# **TRANSPORT CO. LTD.**

**"Your Goods Travel While You Sleep"**

(The Secret of Our Success)

Direct Freight Operators From WELLINGTON to  
**NAPIER, HASTINGS and WANGANUI**  
 and VICE VERSA

Address—Head Office: STATION STREET, NAPIER (Phone 4539 — 3 lines)  
 Hastings Branch: KING STREET, HASTINGS (Phone 69-115)  
 Wellington Branch: THORNDON YARDS (Phone 71-669 — 6 lines)



HAWKE'S BAY  
v.  
WELLINGTON  
at  
McLEAN PARK

For Today's Match in Tomorrow's Perspective Read

**THE SUNDAY TIMES**

New Zealand's Top Sunday Newspaper.

ALEX VEYSEY will be at McLean Park with his Typewriter . . .  
and BILL MARTIN will be at McLean Park with his Camera  
. . . They are just like THE SUNDAY TIMES and THE DOMINION . . .  
an unbeatable combination.

**On Sunday it's THE SUNDAY TIMES**  
**From Monday to Saturday it's THE DOMINION**

.....

# The Napier Harbour Board

---

*Invites YOU to invest NOW  
in their Trustee Security Stock*

**THE PORT OF NAPIER IS ONE OF NEW  
ZEALAND'S MAJOR EXPORT PORTS. HAND-  
LING 900,000 TONS OF CARGO IN THE  
LAST FINANCIAL YEAR.**

**FUTURE DEVELOPMENT INCLUDES NEW  
OVERSEAS BERTHS AND NEW CARGO  
HANDLING AREAS.**

---

## **YOUR MONEY CAN HELP**

---

*For Further Details Apply to The*

**NAPIER HARBOUR BOARD  
TELEPHONE 8684  
P.O. BOX 166  
NAPIER**

# "INSTANT JUSTICE"

(By "Flyhalf")

In these days of instant this, that and the other thing it is probably only natural that the Rugby referee is the dispenser of "instant justice" on the Rugby field.

It takes our courts days, even weeks sometimes, to decide "beyond a reasonable doubt" that A did something to B that he ought not to have done.

But in two flips of a pea in a whistle the referee has summed up the case for the prosecution and the defence and delivered his judgment. There's no appeal—you likes it or lumps it!

Smiling Laurie O'Keefe, the exponent of the free flow game, had a couple of tough decisions to make last week in the Hawke's Bay-Waikato match.

The first of these is better considered second in the light of the penalty try which was awarded Andy Johnson after being tackled without the ball by Bill Davis.

The referee had to decide whether Johnson, had he actually taken the ball, would have scored a try. Mr O'Keefe decided he "probably" would have. It may well have turned out, of course, that the ball would have beaten Johnson over the deadball line.

This was all the more interesting because a similar situation arose earlier in the match when in fact Ian MacRae did score a try. Mr O'Keefe noticed however that while MacRae was making for the line he was obstructed by Waikato defenders.

He said after the match that he thought a try would probably not have been scored as there were too many Waikato defenders on hand.

But MacRae did score only to find that before touching down the ball Mr O'Keefe had awarded a penalty against Waikato.

It would have seemed, but for the awarding of a penalty, that a penalty try was probably more in order in MacRae's case than in

Johnson's episode at the other end of the ground.

But such are the difficulties of handing out instant justice.

As it turned out, Ian Bishop goaled and the crowd acclaimed his record for a Hawke's Bay player in Ranfurly Shield Rugby. Bishop now has 152 points, 11 points fewer than Canterbury's S. K. Henderson with 163 and 25 fewer than points record holder M. C. M. Cormack, of Auckland.

Bill Davis' four tries gives him a total of 12 in shield Rugby since 1966 and with 36 points he is top try scorer and second to Bishop in total points scored in the 19 shield matches since 1966.

Hawke's Bay's Ranfurly Shield record is:

	P.	W.	L.	D.	F.	A.
1904-21	4	-	4	-	14	54
1922-26	25	25	4	4	729	213
1927-33	4	3	1	-	85	42
1934	4	3	1	-	85	42
1935-65	6	-	5	-	38	66
1966-69	19	17	-	2	890	122
Totals	62	46	13	3	1300	541

63-47-13-3      14      1314 - 547

## Midget Match

N.H.S.O.B.

(White)

B. Nelson, M. Angen, R. Wong, G. Beirne, P. Ahern, J. Hick, M. Tester, W. McIntyre, L. Cave, A. Horrocks, G. Nicholson, S. Conolly, M. Paradine, S. Derwin, R. Squire, J. Orringe, S. Norton, A. Warren, B. Hansen.

WAIROA

(Green)

C. Lambert, L. Aitken, J. Hooper, S. Winiata, P. Gemmell, G. Taylor, D. Winiana, J. Gemmell, R. Corbin, J. Henare, S. Pitman, R. Joe, T. Rarere, M. White, R. Karpene, B. Jones, A. Marsh, L. McIntyre.  
2.15 (5mins halves).

---

# **HAYNES LTD.**

**WHERE THE BEST COSTS LESS**



NAPIER'S LEADING BUTCHERS FOR THE PAST 60 YEARS

HASTINGS STREET, MAREWA, TARADALE and MARAENUI

---

**Symbolising  
the best  
in insurance**



**NORWICH UNION**  
**LIFE INSURANCE SOCIETY**

**NORWICH UNION**  
**FIRE INSURANCE SOCIETY LTD.**

**Norwich Union Building, Hastings Street, Napier**

BRANCHES AND REPRESENTATION THROUGHOUT NEW ZEALAND.

---

## POPULAR IN RUSSIA

Ever since Rugby schoolboy William Webb Ellis first took the ball into his arms and ran in 1823, "Rugby" has spread throughout the world. Now, this muddy, vigorous game of Tom Brown's Schooldays has taken a firm place on the playing fields of Russia.

The original makers of the oval rigger ball, James Gilbert, one-time shoemakers who have a small premises in Rugby, have just had one of their largest single export orders of recent years. Surprisingly, from the Soviet Union.

"We are making 300 match balls for them," said managing director of the family firm, 47-year-old Alan Thomas in a recent report from Britain.

"We make about 250 balls a week and supply many countries. But this is the first order that we have had from Russia. We sometimes send them to Rumania."

Rugby football has existed in Russia for some years. But is was never particularly popular. It was once frowned on by a Russian magazine for young people who said "that it maimed the soul and bodies of players."

But more recently there has been a wide-spread call for encouragement throughout Russia.

Meanwhile in Sweden, a country where Rugby is played but not to any great extent, it is nothing for players to make a round trip of some 700 miles just for a weekend match.

Although the game started there in 1931, there are only some eight clubs — the reason for this lack of growth is in part due to the climate as from November to April the grounds are usually covered with snow and frozen hard.

There is a league competition which runs from Spring to Autumn but other matches are arranged on a friendly basis between Denmark, Holland and the Eastern bloc countries, of Poland and Czechoslovakia.

The Swedish clubs are well catered for financially and receive municipal grants — especially generous where youth is concerned.

The national Rugby union also gets \$3000 a year from the State to cover the cost of administration, publicity, instructional matter and international exchanges.

---



New Zealand's National Airline

**Yes Sir! Any Passenger Flying to a Business or Social Function Qualifies for the Special N.A.C. 10%**

## GET TOGETHER DISCOUNT

... Providing at least 10 people are flying to it. They need NOT be travelling together, or even from the same air port.

Organisers of conferences, reunions, excursions and other functions should apply to any N.A.C. Aircentre or Travel Agent for individual 10% Discount Vouchers and full information.

**FLYING'S THE WAY TO GET TOGETHER!**



# TEAM STATISTICS

## HAWKE'S BAY

## WELLINGTON

	Age	Height	Weight		Height	Weight	Age
I. R. Bishop	26	5 11½	12 3	O. G. Stephens	5.8½	12.2	22
P. R. Carney	22	6 0	13 0	M. O. Knight	6.0	12.12	23
M. G. Duncan	21	6 1	13 10	B. L. Hill	5.8	12.2	23
D. B. Smith	25	5 10½	11 0	R. L. Gray	6.2	13.12	23
D. G. Curtis	25	5 9½	12 3	M. Sayers	5.11	12.7	22
W. L. Davis	26	5 11½	12 12	G. F. Kember	6.1	13.7	23
I. R. MacRae	26	6 2	14 0	M. Blackburn	5.7	11.6	25
J. P. Dougan	22	5 7½	11 3	I. N. Stevens	5.9	11.7	21
M. R. S. Natusch	18	5 10	13 0	R. M. J. Barlow	5.9½	12.4	22
E. D. M. Furlong	24	6 0	13 7	G. R. Weinberg	5.10½	12.10	23
M. A. Thomas	22	5 6	10 7	J. Karam	5.8	12.0	17
H. J. Paewai	21	5 7	11 9	A. R. Leslie	6.2	14.3	24
G. A. Condon	24	6 2	14 3	W. J. Nicholls	6.2	15.5	25
T. Davis	22	5 11	14 4	G. C. Williams	6.0	13.10	24
K. R. Tremain	31	6 2	16 7	J. H. W. Kirkby	6.2	15.4	24
J. P. Rumball	26	6 1	13 12	B. Guy	6.4½	16.4	24
P. D. Pratt	24	6 1½	12 8	P. Delaney	6.3	14.10	29
K. K. Crawford	26	6 3	17 7	R. B. W. Gill	6.2	17.7	25
R. M. Robinson	20	6 7	16 7	K. F. Gray	6.2	16.12	29
R. S. Abel	33	6 4½	16 7	G. A. Head	6.1	15.7	25
N. W. Thimbleby	30	5 10	15 7	T. K. McDonald	6.2	14.9	27
G. T. Wiig	21	6 3½	15 10	P. W. V. Abraham	6.1	14.6	25
H. Meech	27	6 3	15 7				
M. J. O'Malley	27	5 11	13 0				
A. Meech	29	5 10½	13 7				

# Schwepesmanship

Opens up

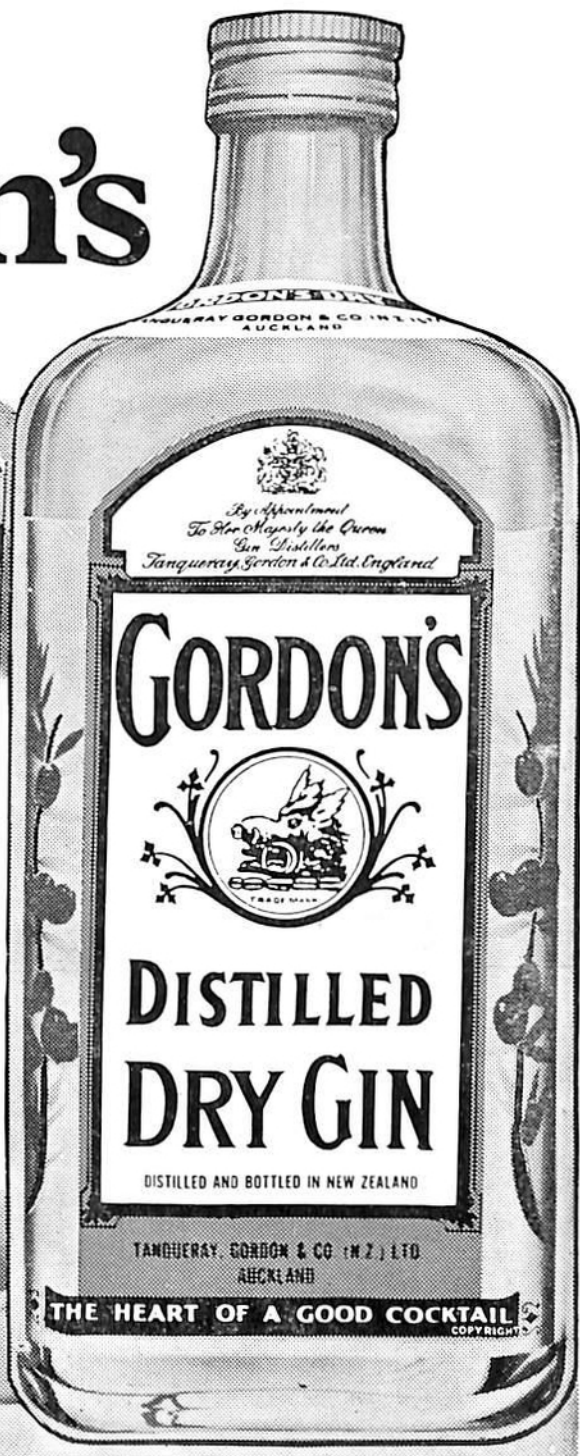
Great

Possibilities

*The simple art of being a good mixer*

# Mix with Gordon's

Mix Gordon's with Tonic,  
Orange, Lemon or Cola, or  
anything else you  
fancy ...people find  
they're made  
for each other



LOCAL DISTRIBUTORS:

**HARDWICKE and ROBERTSON (H.B.) LTD.**

13 CARLYLE STREET, NAPIER

PHONE 7101

*There's a time  
and a place in your life  
for the full-bodied  
taste of a great  
canned beer*



## **LEOPARD RED LABEL STRONG DRAUGHT BEER**

BREWED AND CANNED BY LEOPARD BREWERY LTD., HASTINGS

*Go hunt a Leopard—the really great beer*

