

# Shield '67



**The  
Ranfurlly  
Shield in  
Hawke's Bay,  
1967.**

**40c**



**BACK IN HAWKE'S BAY** after 32 years, the Ranfurly Shield at Napier, September, 1966: From left.—Back row: M. Williams, L. Cooper, K. Crawford, G. Condon, I. Bishop, G. Stone, D. Kirkpatrick, J. O'Connor (manager), N. Thimbleby, D. Snow, W. S. Bramwell (chairman), M. Duncan, C. Le Quesne (selector), T. Johnson, G. Watts, A. Waldin, K. Tremain (captain), I. MacRae, J. Nuku. Front row: A. Dick, D. Smith, A. Meech, I. Hay (masseur) W. Davis, H. Paewai.

CRASHING tries by Tremain . . . a steamroller run by Crawford . . . that shield-saving kick from Furlong . . . and an indomitable team spirit. These were some of the memorable mind pictures created by Hawke's Bay's seven-match defence of the Ranfurly Shield in the mild, sunny Winter of 1967. And these are among the moments of tension, drama, despair and joy recaptured in word, pictures, facts and figures in "Shield '67" . . .



# FOREWORD

The season of '67 was one of the greatest for Hawke's Bay Rugby. Seven challenges for the Ranfurly Shield successfully thwarted. Fourteen matches played in all and only one lost.

It was the justification of selfless dedication by the team's selector, Mr C. M. Le Quesne, the hard work and enthusiasm of the players and the never failing support of administrators and followers of the game through the years.

With no major international tour, attention focused on Hawke's Bay and the Ranfurly Shield series was pre-eminent on the New Zealand Rugby calendar.

The Hawke's Bay team lifted its game above all obstacles; delighted huge crowds with bright, entertaining and winning Rugby.

How many times throughout the season were memories of the 1920s of Hawke's Bay Rugby recalled? Younger generations joined the old in reflecting on past performances. Would the team of the late 1960s recapture the glories of the record-breaking successes 40 years earlier?

Few will dispute the team's achievements in 1967 had the hallmark of greatness. But the question remains: Was it the step into a great new era?

## CONTENTS

	Page
<b>Features:</b>	
H.B.R.F.U. Comments . . . . .	2
Looking Back by C. M. Le Quesne . . . . .	3
Shield Tension; an interview with K. R. Tremain . . . . .	9
H.B. Statistics . . . . .	10
Hawkeye's Story . . . . .	48
Post-war Shield Giants, by J. B. Buxton . . . . .	51
Shield History . . . . .	52
<b>Challenges:</b>	
Manawatu . . . . .	14
Waikato . . . . .	18
Wairarapa . . . . .	25
Southland . . . . .	30
Taranaki . . . . .	34
Otago . . . . .	38
Wellington . . . . .	42
<b>Photo Features:</b>	
The Defenders . . . . .	5
McLean Park From the Air . . . . .	28
Hawkeye Parade . . . . .	29
Earlier H.B. Shield Winners . . . . .	55

Written and compiled by K. R. Hawker and R. G. Mulholland.  
 Pictures by The Daily Telegraph photographers, D. C. McLachlan, R. Marshall and D. A. Alford.



**MR MAGILL**

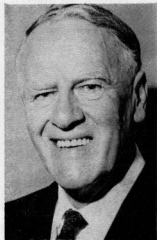
# "A great season"

**By MR P. R. MAGILL, President H.B.R.F.U.**

The season closes triumphantly with the shield staying in Hawke's Bay, and one wonders who would have visualised, after our unsuccessful challenge at Taranaki, that we would have had the opportunity of a second chance so soon, against Waikato.

The events since that challenge are now history, and the younger generation of Hawke's Bay's Rugby players have had the same thrill as their fathers in seeing Hawke's Bay repulse all comers.

This experience is going to reflect in the youngsters' approach to the game for many, many years. Already, throughout the province, one can sense a new dedication from the 11th to the junior grades, which, if spoken out loud, would say: "I am going to play for Hawke's Bay."



**MR BRAMWELL**

**By MR W. S. BRAMWELL, Chairman H.B.R.F.U.**

It has been a great thrill for all members of the Hawke's Bay management committee to administer Rugby during the season. Holding the shield has given a tremendous impetus to Rugby throughout the province.

Every sub-union and all clubs in the district have played their part by giving valuable assistance to the Union and the result of the season has, in my opinion, welded the Union into a strong position on the playing fields and administratively.

The Union during the past season has realised the wonderful benefit and sense of security its temporary seating, which was purchased some years ago, has given. The seating capacity of the ground has been increased by about 12,000 and this has been of great benefit to the 34,000 additional patrons who have been able to attend.

At the end of this great season I would like to thank most sincerely all members of the management committee, members of sub-unions and all other Rugby supporters who have, by their enthusiasm, helped to make this season the great success it has been.



**MR C. M. LE QUESNE**, a Hawke's Bay representative from 1932 until 1936 and again in 1938. A member of the 1934 team which won the shield for the second time for Hawke's Bay; North Island (1935), All Black trialist (1935), Hawke's Bay selector since 1957.

# LOOKING BACK

*By C. M. Le Quesne (H.B.'s Selector)*

**When we looked at what lay before us in defending the Ranfurly Shield during 1967, we knew it was going to be a tough job. We set out to make the task as easy as possible.**

Looking back now after seven successful defences, I don't think we made mistakes in arranging the programme. Unfortunately, we had to face major unions in each match so it was all the more difficult in deciding the order of playing them.

Once this was done though, we were confident we could hold the shield, at least until the last three matches. It would have been ideal if we could have met a minor union as a pipe-opener. I realised Otago would be strong—that was why we played them in the second-last match.

The preparation started in February and by the time the first match arrived we had decided the team should meet together on the Saturday morning before each game. After the Manawatu match, we all thought it better to have everyone together on the Friday night. We booked into a hotel and this worked splendidly. By the time we left for the park, the whole team was in the right spirit for the game.

By the time we arrived at July, the team had built on the tremendous spirit developed in the previous seasons. Those who are not with the team will find it hard to understand what I mean by team spirit, but anyone who saw the way Neil Thimbleby called the team together after Kel Tremain was hurt in the Southland match, will understand what I mean.

Just before the first representative match, we lost Tony Waldin and Max Loughlin—both our first five-eighths. Tony was just coming right and Max had been our No. 1 in this position. Then we lost Hepa Paewai and, towards the end of the season, Tom Johnson and Denis Smith.

The fact that we held the shield in spite of these setbacks proves the great depth in Hawke's Bay Rugby at the present time.

I have always endeavoured to bring in younger players. They know that they might not get a game but they get a chance to practice with the regular team and to learn and gain experience. The matches in between the shield games provided opportunities for them to have a run. The way these younger players have developed has proved the value of this policy.

I said in an interview at the start of the season that Hawke's Bay had a team which could adapt its play to any style and the shield series certainly proved this.

We have a natural running game, but at times the team had to play the tight game in a hard forward battle. Not that we like playing the game that way, but you don't play the game for fun in shield Rugby. We had to adapt our game or lose. You have to face facts.

Hawke's Bay's greatest strength this season has been its adaptability—team spirit.

Everyone, including myself, had reached a tremendous pitch of excitement for the Manawatu match. There was the tremendous build-up everywhere—in the Press

Continued overleaf

## Looking back:

and radio and among followers of the game throughout Hawke's Bay. The team was absolutely scared to do anything wrong. I suggest that had Waikato been the first match, the conditions would have been the same for the Hawke's Bay team. Had Manawatu come second, they would have got the same treatment as Waikato received.

The fear of losing the shield in the first match and being laughed at was uppermost in our minds. No person or team likes to be laughed at.

On top of all this, Ian Bishop had been in bed for a couple of days with the flu' and had been involved in a car accident on the Saturday morning; Rod Abel had pulled a calf muscle and needed injections before he could play and could not jump in the line-outs; Blair Furlong had been in bed for the week with the flu' and a septic throat.

Because of their experience these three could not be left out. We could not afford to play inexperienced players in this game. And each of them played. That is team spirit!

Many were not impressed with the way the team played, but first things first. Hawke's Bay still had the shield and that, as far as the team was concerned, was what mattered. We realised though, the sooner we got back the team's natural game the better.

The other lesson learned from the Manawatu game was that only fit players would play in the remaining defences, and we stuck to that.

Before the Manawatu game, only Kel Tremain, John Buxton and myself had had experience of shield Rugby. It was over 30 years since the shield had been in the province, and everyone, administrators included, had to find out how things should be done. We came out of the Manawatu

match just that little bit wiser. We all profited from the experience and amended our ideas accordingly.

Manawatu was the turning point as far as everyone was concerned. The open game had not been lost sight of, but you just don't play open Rugby for the sake of it.

And the hardest game? Well, I suppose the Taranaki match. The feeling was in the game—from the public, the Press and the players. Man for man, the Taranaki match was the hardest Hawke's Bay had to face during 1967. The best game?—undoubtedly the Taranaki match again.

Taranaki certainly had the strongest pack and we met them with a forward pack which had a reputation of being open and loose. The fact that we played the hard forward struggle and won made it the best game. From a spectator point of view, the Waikato challenge was the most sensational. Everyone enjoyed that.

It was unfortunate the Otago game was sandwiched between the Taranaki and the Wellington game because, once the Taranaki match was over, the tension seemed to lift. The general feeling throughout the province was that Otago was just a fill-in before meeting Wellington.

Unfortunately, this feeling found its way into our camp and affected the players' attitude. The result was a very close match.

The shield has undoubtedly brought together the people of Hawke's Bay. Just what it has done for the Rugby of the province is probably too early to say. The remarkable thing has been the tremendous support from the public. Make no mistake about it, the team felt the Hawke's Bay public behind them in the Otago game. The Supporters' Club also did a wonderful job in giving the team heart.

Now that 1967 is over, a new season has to be faced. It'll be as hard, but the depth is present in Hawke's Bay Rugby.

Percy Tombs has developed young talent in his B team and there is still more to be brought into the limelight.

I don't think there is any cause to feel Hawke's Bay will be lacking in players to defend the shield next season.

There should be again at least seven challenges. Bush normally play the B team, but they could request a shield match, in which case they would have to play the A team. Other unions to play in Hawke's Bay are Poverty Bay, Auckland, Bay of Plenty, East Coast, Counties. Marlborough asked for a match this season but missed out so it is likely they will be interested next season.

On top of this, Hawke's Bay will tour the South Island and, with other away matches against Taranaki, Manawatu and Wellington, there should be seven home and seven away matches. The job of arranging these satisfactorily in between the tour, the visit of the French team and trial matches and the like is something we have yet to think about.

The team has been a credit to Hawke's Bay and Rugby in the province. Their loyalty is unquestioned. John Buxton came in as assistant coach and has done a great job. He was popular among the team and the team learned that John knew what he was talking about. It was the first time in my 11 years as selector there has been an assistant coach, and such a position is invaluable during such a tremendous shield season.

The team's physical education instructor, Bryan Wilson, masseur Ian Hay and manager Jim O'Connor each had their part to play and carried out their jobs wonderfully well. The union and the public was with the team all the way. It is not only the 15 playing who keep the shield. It is this "greater team", for want of a better expression, which combines to make such a magnificent achievement possible.

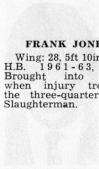
We will all be trying to repeat the success in 1968.

# The Defenders



**MICK DUNCAN**

Three-quarter: 19, 6ft, 13st 8lbs; H.B. Junior 1965, H.B. 1966-67. Showed some of last year's form towards end of season. Farm hand.



**FRANK JONES**

Wing: 28, 5ft 10in, 13st; H.B. 1961-63, 1967. Brought into squad when injury troubled the three-quarter line. Slaughterman.

MR. J. DIXON



**BILL DAVIS**

Centre: 24, 5ft 11½ins, 12st 12lbs; H.B. Junior 1958-60, H.B. 1961-67. All Blacks 1963 and 1967. Regained All Black place with brilliant form although troubled with knee injury towards end of season. Company representative.

MR. B. WILLIAMS



**DOUG CURTIS**

Wing: 23, 5ft 9in, 12st 5lbs; H.B. Junior 1959-60, H.B. B 1964-65, H.B. 1967. Brought in for first match of season and a regular member since. Stock agent.

**KELVIN TREMAIN**  
Flanker: 29, 6ft 2in, 15st 12lbs; Southland 1957, Manawatu 1958, Canterbury 1959, 1961, Auckland 1960, H.B. 1962-67; All Black 1959-67. An honour-packed career, enhanced by many glorious exhibitions throughout the shield series. Stock agent.



**IAN MACRAE**

Five-eighth: 24, 6ft 2ins, 13st 7lb; West Coast 1961, Bay of Plenty 1962, H.B. 1963-67, All Blacks 1963, 1966, 1967, N.Z. Colt 1964, North Island 1963-64, 1966-67. A brilliant and dangerous runner at all times. Timber company employee.



**IAN BISHOP**

Full-back: 24, 5ft 11½ins, 12st 7lbs; H.B. Junior 1961-62, H.B. 1963-67. Goal kicker for the past two seasons. Engineers' assistant.



**DENIS SMITH**

Wing: 23, 5ft 10½ins, 11st; H.B. Junior 1962-63, H.B. 1964-67. Missed several matches because of injury. Clerk.





**BLAIR FURLONG**

Five-eighth: 22, 6ft, 13st; H.B. Junior 1961-62, H.B. 1963-65, Bay of Plenty 1967, H.B. 1967. Came back to province a matured and skilled player. Clerk.



**AIDAN THOMAS**

Half-back: 20, 5ft 6 1/2 ins, 10st; King Country Junior 1965, H.B. 1967. Original B team selection but made the A team and took over No. 1 half-back position after Paewai withdrew because of injury. Bank officer.



**HEPA PAEWAI**

Half-back: 19, 5ft 6 ins, 11st 2lbs; H.B. 1966-67. Injured in Waikato match but reached N.Z. under-23 trials before further injury kept him out for rest of season.

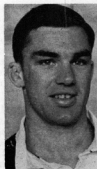
**TOM JOHNSON**

No. 8: 28, 6ft 1in, 14st 9lbs; Counties 1957, Waikato 1958, H.B. 1959-63, Auckland 1964, H.B. 1965-67. Played his 100th first-class match this season but troubled with injury throughout year. Branch manager.



**DAVE BONE**

Flanker-No. 8: 26, 6ft 1in, 13st 7lbs; H.B. 1960-64, 1967. Made an impressive return to top class provincial Rugby. Company director.



**GARY CONDON**

Flanker: 22, 6ft 2in, 13st 7lbs; H.B. 1965-67, Combined Services 1966. Took over position on side of scrum following injury to Johnson. Constable.



**KARAAN CRAWFORD**

Lock: 24, 6ft 3in, 17st 4lbs; H.B. 1964-67, N.Z. Juniors 1965. All Black trialist. Improved line-out forward and delighted crowds with his bursting runs. Teacher.



**ROD ABEL**

Lock: 31, 6ft 5in, 17st; Canterbury 1960-62, H.B. 1963-65, 1967. Came out of retirement to give his invaluable experience to province. Salesman.



**ROBBIE STUART**

Lock: 19, 6ft 3ins, 15st 7lbs; H.B. Junior 1966, H.B. 1967. Understudy to Abel and Crawford. Clerk.





**NEIL THIMBLEBY**

Prop: 28, 5ft 10ins, 15st 2lbs; H.B. 1959-67. Iron man in the front row, reached a milestone and a H.B. first in playing his 100th game for the province against N.S.W. Country. Water-sider.



**HILTON MEECH**

Prop: 25, 6ft 3in, 15st 2lbs; Wairarapa Junior 1960, H.B. 1962-64, Canterbury B 1965, Canterbury 1966, H.B. 1967, N.Z. Universities 1966. A powerful prop who played some of his best games towards end of season. Farmer.



**MYLES REDDY**

Hooker: 25, 5ft 11ins, 12st 7lbs; North Auckland Junior 1961, North Auckland 1965-66, H.B. 1967. Took over position as No. 1 hooker and played in all shield matches. Builder.

**GUS MEECH**

Hooker: 27, 5ft 10½ins, 13st 7lbs; H.B. Junior 1959, H.B. 1963-67. Lost hooking place during season to Reddy. Reserve in shield matches. Market gardener.



# RESERVES

In all there were 28 players called upon to play for the Hawke's Bay team throughout the season.

The shield was defended with 18 players engaged regularly in the seven defences and a further three players were used during the series as reserves.

The original squad of 24 was supplemented during the season because of injury and later in the season further players were brought in to build up the strength of the reserves.

Others to play for the province in non-shield matches during the season were: Paul Carney (full-back), Geoff Martin (five-eighth), Neil Armstrong (five-eighth), Tony Dick (loose forward), Lou Cooper (prop or lock), Peter Smith (loose forward) and Nick Smith (loose forward). David Selby (half-back) was a reserve for the latter stages of the season.



**MR J. BUXTON**



**MR I. HAY**



**MR B. WILSON**



**MR J. O'CONNOR**

## BACKROOM TEAM

FOUR MEN who played a vital part in the shield successes throughout the season were the assistant coach, former All Black Mr John Buxton, the masseur, Mr Ian Hay, the physical education instructor, Mr Bryan Wilson, and the team manager, Mr Jim O'Connor.



# *Rugby Brains!*

*It makes sense to*

*Follow all Sportsmen to . . .*

## The Bay's Largest RUGBY OUTFITTERS

FINE CLOTHING AND FOOTWEAR FOR  
MEN AND BOYS ON AND OFF THE  
FIELD AT . . .

*Millar & Giorgi*  
**(H.B.) LTD**

123E HERETAUNGA STREET — HASTINGS — Phone 87-183

# The agony, ecstasy of keeping 'the log'

(A special interview with Hawke's Bay captain, K. R. Tremain)

**The tremendous loyalty of all members of the Hawke's Bay team was the biggest factor in the successful defence of the shield, according to the team's captain and All Black, K. R. Tremain.**

The joy and elation of success made all the agony of preparation worthwhile, but he admitted there was one regret — that having the shield did not earn All Black status for one or two other players in addition to himself, Ian MacRae and Bill Davis.

"This has been a wonderful year for Hawke's Bay Rugby and for myself personally as captain of this successful side.

"As one reflects on the deeds which have been done on a piece of turf 110 yards long and 75 yards wide, the agony of weeks of grinding around the roads, over the hills and up and down the field in training are quickly forgotten.

"One's mind recollects only the happier moments of joy and elation at accomplishing yet another successful shield defence."

"The meeting in the hotel on a Friday evening, and the genial game of cards in which everyone joins. The hours of sleeping, which come hard to all of us as the thoughts of tomorrow's game fight away the sleep which we all crave for.

"At seven o'clock, there is breakfast. We all try to be merry but already one can feel the nervous strains of the coming match filling each player's stomach — with that tightening knot of tension which I guarantee no man can keep away. The Hawkeye procession comes up the street

and, with its light-hearted banter, it helps to break the strain which envelops everyone."

**What about the "hate-sessions", the intense tactical discussions in which players are drilled on match day?**

Tremain grinned, drew back quickly on his cigarette, and continued:

"About 1.30 we have our team talk, and it is taken so seriously by each man. It is when all pre-arranged moves and plans of attack and defence are once again gone over so that by now a name automatically means a move or a counter-move.

"Then we move on to the bus and to the park. We watch everyone making toward McLean Park, laughing and talking over the prospects of today's game. We sit, not afraid to speak, but each generally wondering if he, through some unavoidable mistake, will mean the loss of the game, yet determined it won't.

"In the park, each player goes to his own peg to get changed for superstitiously a change of pegs could mean a change of fortune on the field.

"There's the smell of linament as the players are rubbed down. The click-clack as sprigs hit concrete with the nervous jump. Out in the corridor other players run, jump, bend, exercise, each in his own way getting his body and muscles warm and ready for the battle."

**When do you finally lose that nervousness?**

"As soon as we get out there, the nerves leave us and the thoughts of the job in hand are put into action by mind and body. For the next 85 minutes we can think of nothing else but victory.

"What a joy it is to see our moves falling

into place and a try being scored as a result. Finally we have won and we realise that 'all' has been worthwhile, we haven't let our coaches or the public down."

**What has been the greatest single factor in Hawke's Bay success?**

"The team has been a tremendously loyal band of friends. By now they are all friends, brought about by spending hours together.

"I am honoured that they have allowed me to be one of them off the field of play yet respected my decisions on the field, whether they be right or wrong.

"No request was too big for the youngest or the eldest member of the side and this loyalty in my mind has been the greatest single factor to success."

**In a season of success, were there any disappointments?**

"Looking back, I am only sorry that having the shield did not give one or two other players the pride of wearing the Silver Fern, which I think they richly deserved.

"However, it is the problem of not being in a main centre where publicity of deeds well done are spread nationwide and this, in some way helps one along the path to this emblem to which we all strive."

**And what of next season — and more shield challenges?**

"I am looking forward to this with more keenness than I have ever known in my football career.

"With the lessons we have learned in the past seven defences, I know we are treading the path of a great side, and within our small group we are cementing friendships which will last for ever."

# The season's statistics

## H.B. MATCH RECORD

### 1967

	For	Ag
v. Wairarapa, at Masterton	22	12
v. N.S.W. Country, at Hastings	28	8
v. Counties, at Papakura	20	12
v. Auckland, at Auckland	3	14
v. Manawatu, at Napier*	11	6
v. Waikato, at Napier*	35	9
v. Poverty Bay, at Gisborne	13	6
v. Wairarapa, at Napier*	27	6
v. Bay of Plenty, at Rotorua	8	8
v. Southland, at Napier*	29	6
v. East Coast, at Tokomaru Bay	19	0
v. Taranaki, at Napier*	16	3
v. Otago, at Napier*	9	8
v. Wellington, at Napier*	12	12
	252	110

\* denotes Ranfurly Shield defence.  
 Played 14, won 11, lost 1, drew 2.

### 1966

v. Wairarapa, at Napier	22	0
v. East Coast, at Hastings	44	9
v. Auckland, at Napier	14	6
v. Wairarapa, at Masterton	12	18
v. Poverty Bay, at Napier	24	0
v. Canterbury, at Hastings	12	12
v. British Isles, at Napier	11	11
v. South Canterbury, at Hastings	21	8
v. Taranaki, at New Plymouth	13	13
v. Manawatu, at Palm. North	14	13
v. Counties, at Napier	34	6
v. Waikato, at Hamilton*	6	0
v. Wellington, at Wellington	6	20
	233	116

\* denotes Ranfurly Shield challenge.  
 Played 13, won 8, lost 2, drew 3.

## H.B. POINTS SCORERS

### 1967

	P	T	Con	D.G.	Pts
I. R. Bishop	18	—	25	1	107
K. R. Tremain	—	8	—	—	24
I. R. MacRae	—	6	—	—	18
G. I. Martin	—	—	—	4	12
D. G. Curtis	—	4	—	—	12
B. D. M. Furlong	1	2	—	1	12
W. L. Davis	—	3	—	—	9
D. R. Bone	—	3	—	—	9
M. G. Duncan	—	3	—	—	9
N. W. Thimbleby	—	2	—	—	6
D. B. Smith	—	2	—	—	6
R. S. Abel	—	2	—	—	6
M. A. Thomas	—	2	—	—	6
P. Carney	—	—	2	—	4
A. Dick	—	1	—	—	3
N. R. Armstrong	—	1	—	—	3
K. K. Crawford	—	1	—	—	3
G. A. Condon	—	1	—	—	3
	19	41	27	6	252

### 1966

	P	T	Con	DG	Pt
I. R. Bishop	18	—	25	—	104
D. B. Smith	—	13	—	—	39
M. G. Duncan	—	6	—	—	18
W. L. Davis	—	4	—	—	12
T. W. Johnson	—	4	—	—	12
K. R. Tremain	—	3	—	—	9
K. K. Crawford	—	3	—	—	9
G. A. L. Stone	—	2	—	—	6
A. M. Loughlin	—	—	—	2	6
I. R. MacRae	—	2	—	—	6
L. W. Cooper	—	2	—	—	6
G. A. Condon	—	1	—	—	3
N. W. Thimbleby	—	1	—	—	3
Total	18	41	25	2	233

## CROWDS, RECEIPTS

Whatever benefits may accrue to the province holding the Ranfurly Shield, the most tangible of these is the financial boost.

A crowd of 21,500 packed McLean Park, Napier, for the first challenge against Manawatu. The gross gate for this match was \$10,000, from which an initial charge of 20 per cent is made over to the Napier City Council, which maintains the park.

Sundry other expenses had to be drawn out of this figure—After-match reception, a proportion of the cost to erect the temporary stands, expenses of the team, gate-keepers and a host of other items which are directly incurred by the particular game.

The Hawke's Bay Rugby Union expected that each match would return a net profit of about \$6000, or a total of between \$40,000 and \$45,000 for the seven matches.

The Otago match was a special challenge and the travel and accommodation expenses of the Otago team have to be met by the Hawke's Bay Rugby Union.

The union published and distributed programmes for each of the seven matches and it was expected that the venture would realise a substantial return.

	Attendance	Estimated Gross Gate
v. Manawatu	21,500	\$10,000
v. Waikato	22,500	\$10,500
v. Wairarapa	18,800	\$9,250
v. Southland	19,600	\$9,500
v. Taranaki	24,200	\$11,000
v. Otago	19,150	\$9,500
v. Wellington	25,580	\$11,500
Total	151,600	\$71,250

# APPEARANCES FOR H.B.

	Wairarapa	N.S.W. Country	Counties	Auckland	MANAWATU*	WAIKATO*	Poverty Bay	WAIARAPA*	Bay of Plenty	SOUTHLAND*	East Coast	TARANAKI*	OTAGO*	WELLINGTON*	Total matches
I. R. Bishop	1	1	1	1	1	1	1	1	1	1	1	1	1	1	13
M. Duncan	1	1	1	1	1	1	1	1	1	1	1	1	1	1	10
W. Davis	1	1	1	1	1	1	1	1	1	1	1	1	1	1	11
D. Curtis	R	1	1	1	1	1	1	1	1	1	1	1	1	1	12
I. MacRae	1	1	1	1	1	1	1	1	1	1	1	1	1	1	12
B. Furlong	-	-	R	1	1	1	1	1	1	1	1	1	1	1	9
A. Thomas	-	-	-	-	-	-	1	1	1	1	1	1	1	1	8
H. Paewai	1	1	1	1	1	1	1	1	1	1	1	1	1	1	6
D. Smith	1	1	1	1	1	1	1	1	1	1	1	1	1	1	8
F. Jones	-	-	-	-	-	-	-	-	-	-	1	R	-	R	1
P. Carney	-	-	-	-	-	-	-	-	-	1	1	-	-	-	1
G. Martin	-	1	1	-	-	-	1	-	R	-	1	-	-	-	4
N. Armstrong	1	-	-	-	-	-	1	-	R	-	1	-	-	-	3
A. Dick	-	-	-	-	-	-	-	-	-	-	1	-	-	-	1
L. Cooper	R	-	1	-	-	-	1	-	1	-	1	-	-	-	4
R. Stuart	-	-	-	-	-	-	1	-	R	-	1	-	R	-	2
A. Meech	1	1	-	1	-	-	1	-	-	-	1	R	-	-	5
T. Johnson	-	-	-	-	-	1	1	1	-	-	-	-	-	-	3
D. Bone	-	1	1	1	1	1	1	1	1	1	-	1	1	1	12
G. Condon	1	1	1	1	1	-	-	R	-	1	1	1	1	1	10
K. Crawford	1	1	1	1	1	1	-	1	1	1	-	1	1	1	12
R. Abel	1	1	1	1	1	1	1	1	1	1	1	1	1	1	14
P. Smith	1	-	-	-	-	-	-	-	-	-	-	-	-	-	1
K. Tremain	1	1	1	1	1	1	-	1	1	1	-	1	1	1	12
N. Thimbleby	1	1	1	1	1	1	1	1	1	1	1	1	1	1	14
M. Reddy	-	-	1	-	1	1	-	1	1	1	-	1	1	1	9
H. Meech	1	1	-	1	1	1	-	1	1	1	-	1	1	1	11
N. Smith	-	-	-	-	-	-	-	-	-	-	1	-	-	-	1

R denotes replacement.

\* denotes Ranfurly Shield matches.

**REPRODUCTION or MODERN**

***E. J. Treacher Ltd***

**FURNITURE**

**Is the Bay's Best!**



An exclusive range of Furniture . . . Take a grand tour of our Furniture Stores, explore a new world of living, all designed for comfort, adaptability and beauty, created for you . . . BY PEOPLE WHO KNOW!

**TERMS  
AVAILABLE**

WRITE, OR 'PHONE US FOR A QUOTATION — IF YOU ARE OUT OF TOWN. DELIVERY FREE THROUGHOUT THE NORTH ISLAND!

***E. J. Treacher Ltd***  
**QUALITY FURNISHERS**

**NAPIER — HAVELOCK NORTH — HASTINGS**  
'Phone 77-033

Hastings St., Cathedral End Heretaunga St., Blackmore's Block  
'Phone 5440 'Phone 82-627

**We Will Make to Your Own DESIGN or Copy a Picture!**



**TICKETS FOR** shield matches were often like gold. There was a never-ending quest to get tickets and some people queued for up to three days before tickets went on sale. Queue-jumping and the shortage of tickets prompted fractious conditions in Napier. Here, a queue forms outside McLean Park before the public sale of tickets at 5.30 p.m. on Tuesday nights.

## **CHALLENGE ONE:**

# The hard truths of shield Rugby

Despite a loss to Auckland a week earlier, the morale of the Hawke's Bay team remained high as the key match—the first defence of the Ranfurly Shield—drew nearer.

Hooker Gus Meech was dropped from the side after conceding eight tightheads against Auckland and Myles Reddy, who had done well against Bruce McLeod in the Counties match, was the replacement.

The only other change in the team was the replacement on the wing of Mick Duncan by Doug Curtis, who came into the squad at the last moment for the first representative match of the season against Wairarapa.

Manawatu were unbeaten and had not had their line crossed. And they looked that sort of team when they took the field with the tall lock, Sam Strahan, starting the game with tremendous line-out jumping.

Hawke's Bay had their first set-back when Lindsay Meads kicked a penalty goal for Manawatu after only five minutes. It was not until 20 minutes later in the game that Hawke's Bay had a chance to equalise. This time, Ian Bishop landed his kick from in front.

Then Hawke's Bay took the lead after 25 minutes when Hepa Paewai kicked

ahead from outside the Manawatu 25 and, hurtling through as the ball bounced near the Manawatu goal-line, Dave Bone picked up and dived over.

The try of the match came when Blair Furlong hammered the ball towards the wing and Kel Tremain and Bill Davis had the ball moving to Ian MacRae who dived over. This time Bishop converted and half-time came up with Hawke's Bay leading 11—3.

**That margin proved important, as, throughout the second half, Manawatu continued to dominate the lineouts and with half-back Don McCaskie and first five-eight Cam Stewart kicking often, Hawke's Bay were called on to defend.**

And defend they did—especially after Meads narrowed the gap with a penalty goal early in the second half.

Manawatu's game looked rather more like a defence of the shield than a challenge and with Hawke's Bay still feeling their way in to the shield series it was enough that they could defend so splendidly.

## **Hawke's Bay 11 Manawatu 6**

Half-time: 11—3.

**Hawke's Bay:** D. R. Bone and I. R. MacRae (tries); I. R. Bishop (conversion and penalty goal).

**Manawatu:** L. Meads (two penalty goals).

**Referee:** Mr J. P. G. Pring (Auckland).

**Crowd:** 21,500. **Date,** July 22.

As Manawatu continued to attack, the hopes of Hawke's Bay supporters began to dwindle. But by the time of the final whistle, the most important decision had been reached: Hawke's Bay would defend the shield again.

**Captain Tremain commented after the game:** "The experience will stand us in good stead for the challenges to come . . . the match certainly proved to us that Ranfurly Shield Rugby is a lot different from ordinary representative Rugby."

How right he was!

**Hawke's Bay:** I. R. Bishop; D. G. Curtis, W. L. Davis, D. B. Smith; I. R. MacRae; B. D. M. Furlong; H. J. Paewai; D. R. Bone; G. A. Condon, K. K. Crawford, R. S. Abel, K. R. Tremain (captain); N. W. Thimbleby, M. S. Reddy, H. Meech.

**Manawatu:** R. Paewai; R. Kitchen, L. Stewart; D. McCaskie (captain); A. Cornelius; R. de Cleene, S. Strahan, F. Meads, R. O'Callaghan, W. Kitchen, C. Thompson, J. Rumball; K. Neesdale, B. Kitchen, D. Knight.





**IAN MACRAE** executes a majestic mid-air dive to score against Manawatu.

# The Word for GIN Sir is... GORDON'S

Take the word of the man who knows — most people ask for Gordon's Gin by name. That's why Gordon's is New Zealand's and the world's largest selling gin.



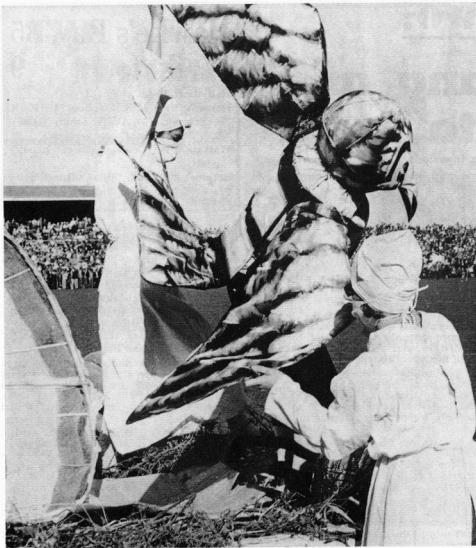
One favourite — Gordon's. The world's biggest selling gin. Naturally. It's still distilled to Alexander Gordon's 1769 formula — the world's most favoured. We wouldn't tamper with it. Gordon's is unchanged and unchallenged to this day. Ask for Gordon's by name.

ONE FAVOURITE

Local Distributors:—

**Gordon's**  
**HARDWICKE & ROBERTSON (H.B.) LTD.**

13 CARLYLE STREET, NAPIER — PHONES 7101, 8513



**FIRST MATCH INCIDENTS:** "Bunny" Tremain is congratulated by Manawatu's line-out forward Sam Strahan, as the two wearied players leave the field. **LEFT:** In a much-publicised pre-match "operation," the Hawkeye egg produces Hawkeye Junior, a man-sized cheer-leader, reputed to be the offspring of the huge mascot, Hawkeye.

## **CHALLENGE TWO:**

# **Cowbells rang and H.B. went to town**

**Waikato brought the first of the big invasions. Mooloo supporters—the cowbells ringing and red, yellow and black ribbons flying—arrived in their thousands for the match.**

The Waikato team, however, had had a tough week. It was their fourth match within eight days. Still, Hawke's Bay had only won 6—0 to take the shield in 1966 and had only narrowly beaten Manawatu.

Tom Johnson, yet to play in a representative match earlier in the season, was brought into the team to play his 100th first-class match. Dave Bone, who had been on the back of the scrum for the Manawatu match, was moved to the side and Gary Condon went into the reserves.

The match started with plenty of sparkle, but there was no scoring in the first 25 minutes. Brian Cooper missed a penalty goal attempt and Ian Bishop was astray with a couple.

**But if Rugby ever deserved to be called the "champagne game," here was the match which fully earned the tag.**

Blair Furlong belted the ball up the wing for Doug Curtis to race through and bowl the Waikato full-back, Cooper. Kel Tremain hurred himself on the ball, scooped it up and was off like a greyhound to score. Bishop converted.

Then it was Neil Thimbleby's turn. He got within 15 yards of the Waikato goal-line before unloading to Tremain who was over near the posts. Bishop again converted.

Ten points ahead, but still the bottle had not been completely uncorked. Cooper straightened out his kicking and by the time half-time arrived, he had kicked a couple of goals and Hawke's Bay led 10—6.

Out popped the cork in the second half: Dave Bone charged down a clearing kick. Karaan Crawford crashed through and the ball sped along the backs to Ian MacRae who kicked ahead and gathered in to score. Bishop converted.

Rod Abel, Crawford and Tremain started off the next scoring move. MacRae was next in the chain and he kicked over the line and beat full-back Cooper to the ball and score. Bishop again converted.

This was followed by Bill Davis and Dennis Smith joining forces and MacRae was in again. Davis was the king pin in the next move which gave Smith a try in the corner.

**Hawke's Bay 35**  
**Waikato 9**

**Half-time:** 10—6.

**Hawke's Bay:** I. R. MacRae (4), K. R. Tremain (2), D. B. Smith (tries); I. R. Bishop (7 conversions).

**Waikato:** B. Cooper (three penalty goals).

**Referee:** Mr D. H. Millar (Dunedin).

**Crowd:** 22,500. **Date,** July 29.

It was not over yet. Cooper goaled from a penalty, but Hawke's Bay had the last word as Furlong cut through and MacRae was up with him to take the pass, beat off the tackles and score.

**And every time Ian Bishop converted. Seven glorious kicks. Seven glorious tries and, with the ball being moved fast and furious, there was only the Hawke's Bay team in the game during the second half.**

Tremain was carried shoulder high from the field and even the Waikato supporters who had arrived by the thousand in Hawke's Bay for that game, went away happy. There was never Rugby, shield Rugby, like it!

**Hawke's Bay:** I. R. Bishop; D. B. Smith, W. L. Davis, D. G. Curtis; I. R. MacRae; B. D. M. Furlong; H. J. Paewai; T. W. Johnson; D. R. Bone, K. K. Crawford, R. S. Abel, K. R. Tremain (captain); N. W. Thimbleby, M. S. Reddy, H. Meech

**Waikato:** B. Cooper; W. Birtwistle, A. Johnson, J. Bell; Q. Tapsell, D. Wood (captain); J. R. Wood; R. Baldwin; B. Guest, G. Clarke, I. Patterson, D. Dysart; G. Bramer, J. Wright, B. Forrest.

# THE MAGNIFICENT SEVEN

AGAINST WAIKATO



TREMAIN'S FIRST



TREMAIN AGAIN



MacRAE'S TURN



MacRAE'S SECOND



MacRAE AGAIN



SMITH SCORES



FOURTH TO MacRAE

**Hawke's Bay, Leaders in Rugby...**

**Magills, Leaders in Carpet!**

**Riccarton <sup>80</sup>/<sub>20</sub> Axminster**



IF YOU CANNOT COME TO  
US . . .

**RING 4518  
NAPIER**

and one of our Carpet Repre-  
sentatives will call on you with  
samples and give a

FREE QUOTATION

**ROBERT MAGILL LTD.**

CARPET SHOP — HASTINGS STREET — Phone 4518



**KARAAN CRAWFORD** on the warpath charges through the Waikato team as Doug Curtis (No. 13) races up alongside.

# TRAVEL BY NEWMANS



Daily Services to and from

NAPIER—HASTINGS—PALMERSTON NORTH—HUTT VALLEY—WELLINGTON

Charter Coaches—North and South Island Tours

FOR COMFORT, CONVENIENCE and COURTESY  
TRAVEL BY . . .

**NEWMANS COACHLINES**

MUNRO STREET, NAPIER — PHONE 5874

## RENTAL CARS

TAKE A TASMAN

Modern Cars to Suit all Purposes

From a Station Wagon to a Mini

IF YOU WANT TO HIRE A CAR, GO TO

**TASMAN RENTAL CARS (Napier) LTD.**

NEWMANS-TASMAN BUILDING

MUNROE STREET, NAPIER — PHONE 5874



**“ANOTHER NEWMAN'S SERVICE”**



# Bishop kicks a "ton"

"Congratulations, Ian," says Waikato full-back Brian Cooper (right) after Ian Bishop's magnificent goal-kicking display to convert each of the seven Hawke's Bay tries.

And in almost every match during the season Bishop gave an immaculate display of goal-kicking. It was fitting that he should bring up his century in points for first-class matches in 1967 with the penalty goal in the Otago match.

This was the kick which put Hawke's Bay in the lead in that "cliff-hanger" defence of the shield and gave Bishop his century for the second successive season.

In 1966, besides kicking the three points from a penalty goal which gave Hawke's Bay the lead against Waikato, he scored a total of 104 points.





**THE "BIG PUSH" TRY:** Wairarapa and Hawke's Bay forwards crash to the ground and beneath the sprawling heap of bodies over the Wairarapa line, David Bone gets the try.

## **CHALLENGE THREE:**

# Crashing Karaan turns the tide

Aidan Thomas, the 20-year-old Taupo half-back who had made his debut a week earlier in Gisborne, was brought into the shield side for the Wairarapa match to replace the regular half-back, Hepa Paewai, injured in the Waikato challenge.

This was the only change in the Hawke's Bay team which had cavorted around McLean Park to thrash Waikato. With a win in the first match of the season against Wairarapa at Masterton, great things were expected of the holders.

But when the match began, Tom Johnson—a key figure in the Waikato win—was an early casualty, and there was not the same success in clearing the ball from the line-outs.

Ian Bishop gave Hawke's Bay the lead when he kicked a goal from a penalty after the first couple of minutes, and when Kel Tremain charged down Brent Elder's clearing kick on the Wairarapa line, Neil Thimbleby crashed over to score.

Down 6—0. Wairarapa played extremely well, with Dermott Payton kicking a goal from a penalty and then, with Wairarapa attacking, Ray Kemp was beautifully set up to kick a dropped goal.

With the half-time score level, the game could have gone either way.

**But it went in Hawke's Bay's favour**

shortly after the start of the second half when Karaan Crawford steam-rolled his way for 40 yards to pass to Tremain, who scored beneath the posts. Ian Bishop converted.

This was the turning point. After 12 minutes, Dave Bone came off the scrum near the Wairarapa line and, taking Thomas' pass, dummied to Ian MacRae moving on the inside.

Bone swung the ball back out to Bill Davis, who cut his way through to score and again Bishop's conversion was over.

After 25 minutes Hawke's Bay used the "big push" and Wairarapa's scrum was hurled back over its goal-line and Dave Bone dropped down on the ball to score. Bishop converted.

Three minutes later, Tremain took a tap kick from a penalty near the Wairarapa line. He charged like a super-powered tank through the Wairarapa team to score.

This time Bishop failed to convert, but he made no mistakes with his conversion

## Hawke's Bay 27 Wairarapa 6

Half-time: 6—6.

Hawke's Bay: K. R. Tremain (2), D. R. Bone (2), W. L. Davis, N. W. Thimbleby (tries); I. R. Bishop (three conversions, one penalty goal.)

Wairarapa: D. H. Payton (penalty goal); R. W. Kemp (dropped goal).

Referee: Mr J. P. Murphy (North Auckland).

Crowd: 18,800. Date: Aug. 12.

of the next try, which started when Davis threw a pass on to the blind side where Blair Furlong sped for the Wairarapa line.

Furlong was just inside the Wairarapa 25 when he passed to Gary Condon, who flicked the ball on to Bone, who went in for his second try.

Another big win; the Bay line was intact and nothing looked like stopping the holders, except perhaps Wellington—still a couple of months away.

Hawke's Bay: I. R. Bishop; D. B. Smith, W. L. Davis, D. G. Curtis, I. R. MacRae, B. D. M. Furlong, M. A. Thomas; T. W. Johnson (replaced by G. A. Condon); D. R. Bone, K. K. Crawford, R. S. Abel, K. R. Tremain (captain); N. W. Thimbleby, M. S. Reddy, H. Meach.

Wairarapa: D. H. Payton; T. W. Wilkinson, M. G. Blackwell, B. L. Shanks; W. J. Mason, R. W. Kemp; B. F. Elder; B. J. Lochore (captain); G. R. Mahupuku, D. Oliver, R. E. Meadows, I. Turley; A. M. Sutherland, B. C. McCarthy, W. N. Rowlands.



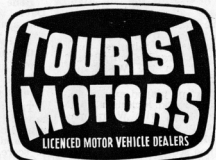
The Sensational 1725 c.c. HILLMAN HUNTER

*For  
Motoring...*

*Choose one of our Team*

**Before Christmas — See us now!**

- ★ **Chrysler Valiant**
- ★ **Hillman Hunter**
- ★ **Hillman Imp**



**NAPIER—HASTINGS—WAIPIKURAU**



**BILL DAVIS** leaves Wairarapa defenders high and dry as he moves in to score after Dave Bone had set the backs in action from a scrum.



**SHIELD VENUE:** McLean Park, Napier, photographed from the air when a record crowd for the ground of 24,200 was set at the Taranaki challenge. The record was raised again in the Wellington match to 25,850.



**HAWKEYE** parades through Napier were a feature on the morning of each match. With participation from the challengers most noticeable for the Waikato, Taranaki and Wellington matches, the parades proved a popular drawcard. Here the Napier City Band, followed by Hawkettes and the mighty bird herself, set out along crowd-lined Emerson street.

## CHALLENGE FOUR:

# Three - try the star Tremain

Hawke's Bay struck its most serious crop of injuries in the Bay of Plenty match at Rotorua a week before the Southland match and speculation was rife throughout the week whether a weakened Hawke's Bay side could hold out the Southland pack.

Southland, downed by Wellington on the Wednesday by 22 points to 12, had a forward pack led by All Black Jack Hazlett and a line-out leaping lock in Graeme Pohlen, who was expected to take a feast of possession.

A light shower fell before the match, but the ground was as firm as ever as the teams took the field, and in the first minute Southland took the lead when full-back Barry Cullen—whose reputation as a goal kicker had reached Hawke's Bay after the Wellington match—landed a penalty goal.

Ian Bishop returned the compliment with a penalty after nine minutes, and from then on it was Hawke's Bay's game, with the forwards outplaying the Southland style.

It was a great day for the Hawke's Bay forwards, with Pohlen being denied possession in the lineouts by Karaan Crawford and Rod Abel, and the loose forwards

having a feast with the Southland inside backs.

**Southland were too slow round the field and towards the end of the game spectators saw one of the most unpleasant of all incidents in the series when Kel Tremain was bowled and writhed in pain on the field.**

But if this game belonged to any one player it was Tremain, and members of the Southland team will have everlasting memories of his dynamic three tries in the second half.

By half-time the Hawke's Bay game had become confined to the forwards and first five-eighth Blair Furlong, who was turning in his best game for the holders.

His kicking was superb and this saved the hobbling Davis from too much work, and Ian MacRae, who had been flattened in a tackle earlier on, was grateful for Furlong's decision to direct the game.

Furlong had danced his way through some tackles to score after 26 minutes and with Bishop's conversion and another penalty gave Hawke's Bay an 11-6 lead at half-time.

Then came Tremain: seven minutes after the start of the second half he dived through the Southland line-out on the Southland line to score. Bishop converted.

With 16 minutes to full-time, the Hawke's Bay pack gave the Southland forwards a hefty push back over the line and diving off the side of the scrum to score was Tremain.

## Hawke's Bay 29 Southland 6

Half-time: 11-6.

**Hawke's Bay:** K. R. Tremain (3), B. D. M. Furlong (tries); I. R. Bishop (four conversions, three penalty goals).

**Southland:** B. J. Cullen (two penalty goals).

**Referee:** Mr R. K. Marsh (Wellington).

**Crowd:** 19,600. **Date:** Sept. 2.

Getting more than his share of attention, Tremain was still the man Southland had to watch, and with six minutes to go MacRae broke clear and handed on to Tremain, who cleared the ball out to Duncan.

Duncan screamed up the touch-line and passed back infield to Tremain, who crashed over in the corner like a three-quarter as he was dragged down by John Lindsay. And Bishop again converted.

Three magnificent tries to Tremain and Bishop's unerring boot had added 17 points to the winning margin of 29 points to six.

**Hawke's Bay:** I. R. Bishop; M. G. Duncan, W. L. Davis, D. G. Curtis; I. R. MacRae, B. D. M. Furlong; M. A. Thomas; D. R. Bone; G. A. Condon, K. K. Crawford, R. S. Abel, K. R. Tremain (captain); N. W. Thimbleby, M. S. Reddy, H. Meech.

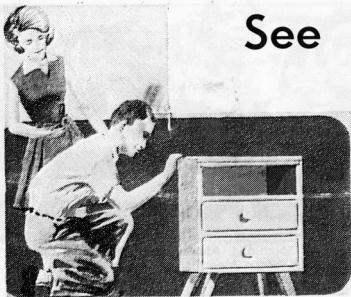
**Southland:** B. J. Cullen; G. A. Townsend, I. S. T. Smith, D. L. Hazlett; R. R. Welsh, A. D. Blackler; L. Taiaroa; G. H. Dermody; A. R. Frew, G. T. Pohlen, P. Grant, H. A. Miller; J. C. Lindsay, G. G. Spencer, E. J. Hazlett (captain).





**UP TOP AND DOWN** below, Hawke's Bay conquered the might of Southland. **Above** (from left): Greig Spencer, Jack Hazlett and Graeme Pohlen prepare to pit their strength against Hilton Meech, Myles Reddy (barely visible) Karaan Crawford, Neil Thimbleby, Rod Abel, Gary Condon, Dave Bone and Kel Tremain. **Below:** Boots, bodies and Blair Furlong—a grass-top view of Furlong's try.





See

**HOLTS**

for all pre-cut  
furniture!

Here's your chance to really save on furniture for **your** home. See Holts for a complete range of quality pre-cut furniture in a host of exciting Contemporary and Conventional styles.

- Divans
- Bookcases
- Bedroom Suites
- Cabinets
- Desks

All available on **EASY CREDIT TERMS** at

**HOLTS**

THROUGHOUT THE EAST COAST



## "WILLIE - AWAY" . . .

**A TYPICAL** Hawke's Bay "willie-away" move in the making as Karaan Crawford runs off the end of the line-out in the Southland match and Dave Bone (No. 8) throws the ball into Crawford's hands.

## **CHALLENGE FIVE:**

# Resolute pack in great struggle

Shield Fever really struck Hawke's Bay in the week before the Taranaki challenge — reckoned by most to be the toughest challenge Hawke's Bay would have to face.

The week before the match was notable for two things: a rumpus over the sale of tickets which created fractious conditions at McLean Park on the Tuesday when the tickets went on sale—and persistent showers of rain.

Hawke's Bay stocks slumped a little when it was learned that Bill Davis—selected a couple of weeks earlier for the All Blacks to tour Great Britain—was still recovering from his injury and would not be playing.

From the kick-off, with Taranaki having won the toss, Kel Tremain, the irrepressible Hawke's Bay skipper, had driven play ahead to the Taranaki line.

Little Aidan Thomas skipped round the side of the scrum, spun the ball back inside to Blair Furlong, and a gorgeous gap opened up for Furlong to score. Ian Bishop's conversion from in front grazed the posts, but was over.

Only a minute gone and the Bay led 5—nil.

Then began the forward battle with the

wise boot of Taranaki first five—eighth Ross Brown attempting to put the challengers on attack, but Hawke's Bay doubled their defences against his efforts. With Ian Bishop and Kerry Hurley kicking penalty goals, Hawke's Bay led 8—3 at half-time.

Big Kel was at it again in the early stages of the second half with a strongman act. Carrying half the Taranaki pack on his back he charged to within a few yards of the Taranaki line.

The Hawke's Bay pack won the ball, Dave Bone leapt off the back and picked it up, passed to Thomas, and what a happy lad it was who thrust himself and the ball over the Taranaki goal-line. With a grin that spread from ear to ear, Thomas was slapped on the back and congratulated by his team-mates as he walked back, and Bishop fired the conversion between the uprights.

If the first try had set Taranaki back on their heels to start with, this second effort certainly put the seal on the game as far as Hawke's Bay was concerned.

A few chances came the way of both teams and towards the end Taranaki almost went across, but once again Hawke's

## Hawke's Bay 16 Taranaki 3

Half-time: 8—3.

**Hawke's Bay:** B. D. M. Furlong and M. A. Thomas (tries); I. R. Bishop (two conversions, two penalty goals).

**Taranaki:** K. P. Hurley (one penalty goal).

**Referee:** Mr C. F. Robson (Waikato).

**Crowd:** 24,200. **Date:** Sept. 16.

Bay's Rock of Gibraltar defences lived up to their fine reputation.

Bishop was spot on with a couple more penalties, but in a moment of over-keenness, Doug Curtis got in front of one and three points went by the board.

A great game had been won by a determined and resolute effort by the Hawke's Bay forwards. There was little open Rugby from either team, but Hawke's Bay supporters felt justified in thinking that if Hawke's Bay could beat Ferdinand's men, then the shield would stay in Hawke's Bay until 1968.

**Hawke's Bay:** I. R. Bishop; D. G. Curtis, M. G. Duncan, D. B. Smith (replaced by F. Jones); I. R. MacRae, B. D. M. Furlong; M. A. Thomas; D. R. Bone; G. A. Condon, K. K. Crawford, R. S. Abel, K. R. Tremain (captain); N. W. Thimbleby, M. S. Reddy (replaced by A. Meech), H. Meech.

**Taranaki:** K. P. Hurley (replaced by B. Gilhooly); L. Clarke, G. McCutcheon, W. Currey; J. Irving, R. H. Brown (captain); D. Wards; T. Jenkins; M. Mills, A. Smith, I. Eliason, B. Collins; A. Gardiner (replaced by F. Harris), J. Major, B. Muller.



**"WOULD YOU** believe I've scored?" grins a delighted Aidan Thomas as he grounds the ball in front of Taranaki five-eighth, Ross Brown (No. 10).

# IT'S ALL PART OF THE GAME . . .

Teamwork that is. The team at the Hawke's Bay Electric Power Board are at your service. Call in and see them. Discuss your electrical requirements with their trained advisory staff.

*They specialise in after sales service of all home appliances.*



# **P**HAWKES BAY ELECTRIC **POWER BOARD**

**NAPIER — MAREWA — HASTINGS**

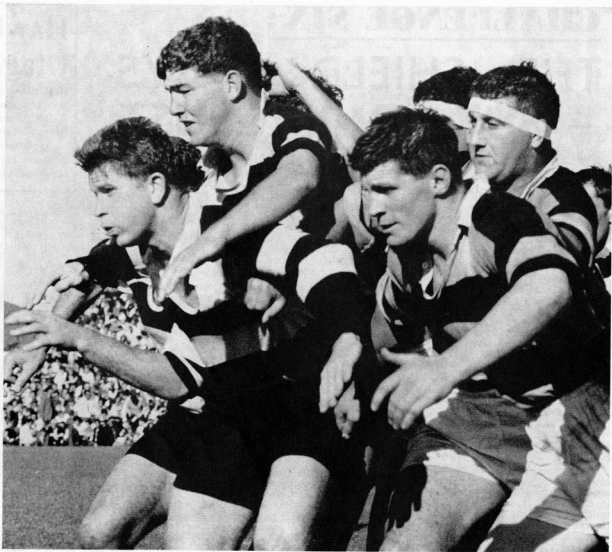
## H.B. PACK HELD UP THE BEST

They huffed and puffed but could not blow down the Hawke's Bay pack. Myles Reddy and Hilton Meech (right) hold back Taranaki All Blacks John Major and Brian Muller.

Individually, the Taranaki pack—which also contained All Blacks Murray Wills and Alan Smith—was the toughest Hawke's Bay came up against.

However, the versatility of the Hawke's Bay pack became increasingly evident.

And the forwards continued to pave the way for victories and '67 provided lasting memories of a pack capable of winning in both styles, open and tight.



# **CHALLENGE SIX:**

## **THE SHIELD STAYS — BUT ONLY JUST**

The dark blues from Otago were lighter and smaller in the forwards and given little chance of winning when they arrived in Napier for the sixth challenge—but what a surprise everyone got.

Lighter and smaller certainly, but not lacking in enthusiasm or vigour and in the first half they had Hawke's Bay groping for answers and led 8—3 at half-time.

**There was plenty of talk in the week between the Taranaki challenge and Otago's about the difference All Blacks, Chris Laidlaw and Earl Kirton would make to the Otago challenge, and they did just this.**

Unbeaten by any other pack in the country earlier in the season, Otago's forwards showed a great deal of dash and drive, while the big Hawke's Bay pack was lethargic for the first half.

Kirton employed the high kick often and loose forwards like Warren Townsend and Bruce Matuschka were always following through quickly. It was from one such move that winger Doug Curtis was pinned down with the ball near the Hawke's Bay goal-line.

Curtis tried to run across field, but was blocked. He got up and tried to kick for touch. He mis-kicked and Townsend was through in a flash to score. Laurie Mains converted, and not only had Otago broken Hawke's Bay's record of keeping their line intact, but were ahead by five points.

Ian Bishop kicked a penalty goal, but

worse things came for Hawke's Bay when Mains landed his penalty goal, and half-time came up with Otago leading, 8—3.

Just what coaches Colin Le Quesne and John Buxton said at half-time is anyone's guess, but it was a transformed Hawke's Bay team which stormed down over the hard ground from the kick-off.

The ball came back quickly from a ruck to Aidan Thomas, who elected to run on the blind side. The farther he ran, with Curtis galloping alongside him, the wider the gap became and Thomas dived over for a try. If ever Hawke's Bay needed Bishop to convert the try it was then, but his kick went just to the left of the posts. Otago 8, Hawke's Bay 6.

Rod Abel came away from one melele like the Abel of old and barging through sent the backs away, but Davis could not find the gap with yards to go. Then Dave Bone came off a scrum and, dummying to Ian MacRae, sent Davis going out in the open. Mick Duncan took the pass and set out for the corner, but he failed to fend off the sole defender and ran into touch yards from the corner.

**Hawke's Bay 9**  
**Otago 8**

Half-time: 3—8.

**Hawke's Bay:** M. A. Thomas (try); I. R. Bishop (two penalty goals).

**Otago:** W. W. Townsend (try); L. Mains (conversion and penalty goal).

**Referee:** Mr K. Bush (Manawatu).

**Crowd:** 19,150. **Date:** Sept. 23.

Kel Tremain almost snatched the ball off the boot of an Otago player as he cleared on the Otago line, and Bone just failed to pick up the ball and dive over.

All these were highlights of the opening period in the second half, and it was while this pressure was on that Kirton was caught off-side and the trusty boot of Bishop kicked the goal down the middle.

Hawke's Bay led by one point, and Bishop had kicked his 100 points for the season.

The Hawke's Bay crowd roared like it had never done before, and stirred by this support, Hawke's Bay defended like champions and came back again.

**Hawke's Bay:** I. R. Bishop; M. G. Duncan, W. L. Davis, D. G. Curtis; I. R. MacRae, B. D. M. Furlong; M. A. Thomas; D. R. Bone; G. A. Condon, K. K. Crawford (replaced by R. L. Stuart), R. S. Abel, K. R. Tremain (captain); N. W. Thimbleby, M. S. Reddy, H. Meech.

**Otago:** L. Mains; E. D. Duckworth, S. R. Inglis, M. P. Collins; D. G. Peddie, E. W. Kirton; C. R. Laidlaw (captain); B. R. Matuschka; D. J. Mather, J. W. Levido, A. J. Banks, W. W. Townsend; D. P. Bendle, G. P. Booth, A. J. Kreft.





**BRINGING HAWKE'S BAY** back into the game, half-back Aidan Thomas scores on the blind side. Otago's Don Mather dives too late as Errol Duckworth and Doug Curtis look on.

# FIRMANS

## Service Station & Caravan Centre

**The Most Modern and  
Up-to-Date Service Station  
in Hawke's Bay**

- OPEN ALL DAY EVERY DAY
- 11 PETROL PUMPS FOR QUICK SERVICE
- 4 TRAFFIC LANES
- FULL STOCKS OF TYRES and ACCESSORIES

**Stockists of New Zealand's  
Finest  
Caravans and Trailers**

- COMPLETE CARAVAN and ROCK-GAS SERVICE
- ANY SIZE ROCK-GAS BOTTLE FILLED WHILE YOU WAIT WITH GENUINE ROCK-GAS

**Whatever your Motoring or Caravan Requirements are —**

**Always Contact FIRMANS First!**

PHONES 39-057 — BOX 491 — HYDERABAD ROAD, NAPIER



**ONLY TRY** against the holders. Otago flanker Warren Townsend is awarded the try by referee, Mr K. Bush.  
**From left:** Aidan Thomas (No. 9), Kel Tremain, Dave Bendle, Doug Curtis (on ground), Ian MacRae, Earl Kirton, Townsend, Mick Duncan and Blair Furlong.

## **CHALLENGE SEVEN:**

# Last - second kick rescues shield

All the tension and drama of the '67 shield series reaches a nerve-tingling climax as Blair Furlong steadies himself in front of the Wellington posts . . .

The clock shows full-time. The score is 9-12. The record crowd surges around the field . . . hoping praying, exhorting. Then a hush!

Thomas, cool, immaculate, spins the ball back to Furlong. He checks . . . WHAM!

The ground explodes as the ball soars between the uprights. Thousands swarm over the ground. McLean Park has never seen anything like it. The shield's intact.

This was the fairy-tale finish of the Wellington match with Hawke's Bay players being swept shoulder-high off the field.

A dropped goal had saved the day and drawn the match, but it had not all been like that. Two dropped goals from the boot of Mattie Blackburn, Wellington's first five-eighth, had lowered Hawke's Bay's hopes and sent the large band of Wellington supporters into raptures.

The first half had seen Hawke's Bay being penalised frequently in line-outs and scrums and the "big-kick" Wellington full-back, Mick Williment, attempting six goals from penalties, but succeeding only twice.

Neither side was attempting to use its back line. As the second half started the veteran Wellington line-out forward Nev. MacEwan began to leap higher than ever and with the ball spinning back cleanly to half-back Ian Stevens, the Wellington team had got on top.

Blackburn had kicked his first dropped goal, but, meanwhile, Mick Duncan had scorched up the touch-line and scored, after Karaan Crawford had charged away. Ian Bishop's trusty boot had kicked a penalty goal, but Hawke's Bay were trailing 6-9 at half-time.

After 11 minutes in the second half, Blackburn cracked away with another dropped goal and, as the minutes ticked by inexorably, victory seemed to slip out of Hawke's Bay's grip.

The game had hardly warmed the crowd with sparkling Rugby, but it was enjoyable hard, tough Rugby with tempers becoming frayed as the forwards hammered away at each other trying to breach open the defences.

**But with 15 minutes to go, the tide changed. Hawke's Bay attacked. Once, twice . . . on and on. The Wellington defence reeled back as the Hawke's**

## Hawke's Bay 12 Wellington 12

Half-time: 6-9

**Hawke's Bay:** M. G. Duncan (try), I. R. Bishop (two penalty goals), B. D. M. Furlong (dropped goal).

**Wellington:** M. Blackburn (two dropped goals), M. Williment (two penalty goals).

**Referee:** Mr D. H. Millar (Dunedin)

**Crowd:** 25,850. **Date:** September 30.

**Bay team thrust this way, that way and back again.**

A try seemed impossible as Wellington threw everything it knew into holding out the determined shield holders.

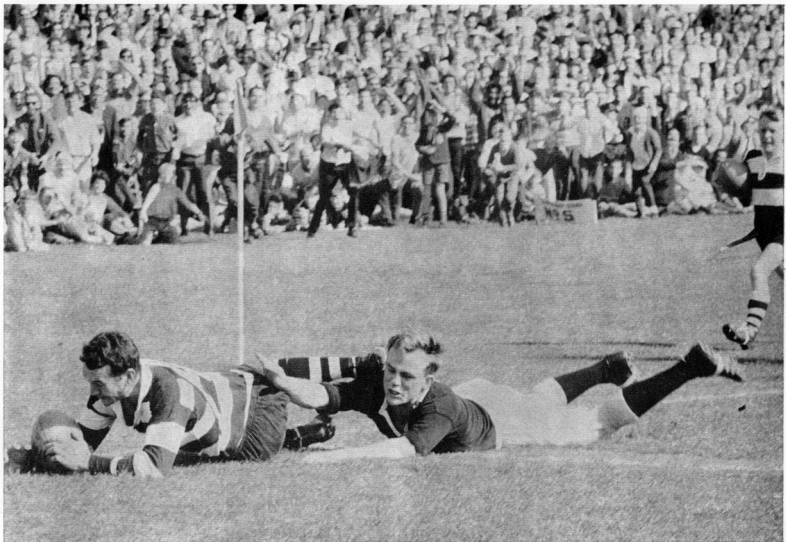
**Nine minutes to go . . .** Wellington are penalised and Bishop goals. Three points to draw. Can they do it?

**Five minutes to go . . .** Hawke's Bay again attack. Wellington clear. Hawke's Bay again. Pent-up emotions are forcing the crowd onto the ground.

**One second to go.**—The kick, The game. The season. It's all over.

**Hawke's Bay:** I. R. Bishop; M. G. Duncan (replaced by F. Jones), W. L. Davis, D. G. Curtis; I. R. MacRae, B. D. M. Furlong; M. A. Thomas; D. R. Bone; G. A. Condon, K. K. Crawford, R. S. Abel, K. R. Tremain (Captain); N. W. Thimbleby, M. S. Reddy, H. Meech.

**Wellington:** M. Williment; R. Gray, B. Hill, P. Myers; G. Kember, M. Blackburn (replaced by J. Dougan), I. Stevens; W. Nicholls; G. Williams, N. MacEwan, P. Delaney, T. Lister; J. Finn, T. McCashin, K. Gray (Captain).



**MICK DUNCAN**, the Hawke's Bay winger, grounds the ball as Wellington flanker Graham Williams stretches out in a vain bid to stop the only try in the final challenge.



**KEL TREMAIN**, supported by Dave Bone (left), crashes into Wellington first five-eighth **Mattie Blackburn**, as he clears in the final desperate minutes. Blackburn had kicked two dropped goals, but had to leave the field after this incident. **RIGHT:** **Karaan Crawford** charges, clutching the ball like a Harlem Globetrotter, in a final minute dash for the Wellington line.

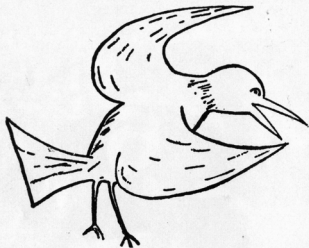
# The kick that saved the shield

Blair Furlong, the Hawke's Bay first five-eighth, becomes the hero of the match as he kicks the dropped goal which gave Hawke's Bay a 12-12 draw against Wellington.

The camera records the epic kick in the last second of the match, the kick which kept the shield in Hawke's Bay till next season.

Later, Furlong gallantly attributed the immaculate kick to "the female inspiration" — he had announced his engagement that day.





**Wattie's**

**Congratulations to a great team on its magnificent performance in turning back seven mighty challenges.**

**EAT**

**Wattie's**

**CANNED and FROZEN FOODS**

**For complete satisfaction.**

**J. WATTIE CANNERIES LTD.,**  
Hastings ● Gisborne ● Nelson  
Branches throughout the country.





**MOMENTS AFTER:** Hawke's Bay captain, Kel Tremain, replies to the tumultuous reception extended to the team after their hair-breadth defence against Wellington. From left: Gary Condon, Bill Davis, Doug Curtis, Ian Bishop (partly obscured), Tremain, Karaan Crawford, Rod Abel (foreground), David Bone, and Blair Furlong with his arm round half-back Aidan Thomas.

# HAWKEYE!

## The story of H.B.'s mighty mascot



**"Hawkeye"—Hawke's Bay's giant magpie Rugby mascot—first captured the imagination of the province's Rugby supporters when she burst on to the Ranfurly Shield scene just three years ago.**

Since then the name "Hawkeye" and the slogan "I'm a Hawkeye Guy" have become Rugby bywords in Hawke's Bay and beyond.

How did all this come about? Well, let's go back to the beginning and let Hawkeye creator, Mr H. K. Stevenson, the secretary of the Hawke's Bay Supporters' (Hawkeye) Club, tell the story—

"A campaign by The Daily Telegraph a few months before the Hawke's Bay challenge to Taranaki for the Ranfurly Shield in 1965 for a suitable Rugby mascot for Hawke's Bay had not brought forth any exciting suggestions," Mr Stevenson recalls.

"One of the newspaper's sports writers asked me if I had any bright ideas and I said I would think about it.

"Half an hour later I was back and said: 'Hawke's Bay with their black and white colours used to be known as the Magpies. Let's make it a magpie . . . and a big one, say 12 feet high with a 20ft wingspan.'

"I offered to attempt to 'get the idea off the ground' and went to a friend keen

on commercial art, Mr Ian Mills, and said: 'Draw me an angry magpie.'

"In a flash came a pencil drawing on the lid of a shoe box and I was off to see two Rugby enthusiasts, Messrs Ray and Ernie Wilg, who had a steel shop attached to their business. I explained what I had in mind and they said: 'Leave it to us, we'll build it.'

"Within a few hours the giant magpie was taking shape. The shield challenge was just 10 days away.

"The question of a name was being bandied around in The Daily Telegraph when a staff member, Mr J. S. Henney, suggested 'Hawkeye'. That was it.

"So 'Hawkeye' was born.

"With the mascot under way, I considered there should be a Rugby Supporters' Club and a meeting was called. Forty turned up and the supporters were immediately roped in to working bees to carry out the covering, painting and other work on 'the bird'.

"The public's appetite to see the bird was whetted by publicity and so when 'Hawkeye' led a great invasion of supporters to New Plymouth for the challenge, just about the whole of Hawke's Bay turned out to see the mascot as it was transported through the various Hawke's Bay centres.

"I concocted the slogan 'I'm a Hawkeye Guy' and with car stickers and hats carry-

ing this slogan, thousands made the journey to support the team in Taranaki

"This was the first invasion.

"The second invasion came last year when Hawke's Bay unexpectedly gained a challenge at the end of the season. With only a week's notice, the Hawke's Bay Rugby Supporters' Club whipped up tremendous enthusiasm, resulting in the successful invasion of Waikato for the shield.

"The club organised a memorable welcome home for the victorious team, when a grand procession through the streets of Napier to a Sound Shell reception drew one of the largest crowds ever seen in the city.

"The Hawke's Bay Rugby Supporters' Club since the province gained the shield has grown in membership from an initial 40 to more than 600.

"It was realised that 'Hawkeye' was too cumbersome and difficult to take on to the field so a scheme was devised whereby the bird should lay an egg, the egg should hatch and out should come a 'chick'.

"This mobile replica of 'Hawkeye' has delighted the crowds with his antics since he was 'hatched' at the first challenge of the season against Manawatu.

**"The club has organised seven pre-game processions during the season, together with cheer leaders and a host of other gimmicks, all designed to encourage and foster Rugby with fun in the Hawke's Bay province."**



**HAWKETTES ENTERED** the Hawkeye family early in the season and carrying their "Bay-Bay-Bay" banners. acted as cheer-leaders at the games. **Above:** Hawkeye Junior poses with his "harem." **Right:** Hawkeye Junior— Napier enthusiast Graham Nicholson with friend before the final challenge by Wellington.



# THE GREATEST NAME IN CIGARETTES

All over the world, on six continents, in over 160 countries  
and on more than 100 airlines the swing is to  
Rothmans King Size — the world's largest selling — most wanted —  
King size Virginia. The reason is not hard to find: Rothmans extra length,  
finer filter and the best tobacco money can buy, give you that cooler,  
smoother, more satisfying taste. Rothmans King Size really satisfies.

**ROTHMANS KING SIZE**  
**REALLY**  
**SATISFIES**

## OTAGO TAKE THE LAURELS?

# THE POST - WAR GIANTS

In attempting a comprehensive analysis and evaluation of Ranfurly Shield Rugby during the post-war era, I feel constrained to adopt the publisher's favourite prologue—"not to be reproduced", etc.

How does one attempt to compare a Canterbury team, scraping out of a desperate last-minute situation against Otago, with an Auckland side whacking lovely West Coast to the tune of 52-6?

In my opinion, four provinces, namely, Otago, Canterbury, Auckland and Taranaki, have emerged, by dint of performance, as logical contenders if one wishes to adjudicate upon the great post-war teams.

The mighty Otago side of the late 1940s developed into a formidable side under the tutorship of V. G. Cavanagh. Cavanagh believed implicitly in the theory that no opposition player should be allowed the luxury of carrying the ball.

He expected his men to tackle so that the unfortunate challenger would stay tackled. Down came the forwards with the word "ruck" etched on their brains. Out shot the ball and Otago backs were usually scampering before the enemy had even contemplated regrouping.

Much of this teaching remains with Otago today, and was amply demonstrated at McLean Park not long ago.

The perfection of such a style of play allowed Otago to run the ball freely, with the result that in the space of 19 games 83 tries were scored, of which 40 were notched by the threequarters, and only 15 by the forwards.

It was not until 1953 that a further sequence of successful defences began when Canterbury convincingly accounted for Wellington 24-3.

Jack Rankin, Neil McPhail and Jack Morton were at the helm during these great days. The team was also blessed with a captain, P. B. Vincent, and vice-captain, R. H. Duff, of international calibre, who played a vital part in defences against 24 consecutive challengers. It is worth noting that of the players participating in this series 18 players had or were destined to wear the Silver Fern.

Canterbury put together 87 tries—64 by backs and 23 by forwards. They were renowned for a style of play which featured outstanding lineout techniques, solid scrummaging, speed to the breakdown and use of a threequarter line which had great attacking ability.

After a titanic struggle, resulting in victory against the 1956 Springboks, Canterbury's energy was sapped, allowing Wellington to squash any hopes for a new record of consecutive defences.

Auckland's previous brief term as shield holder traced back to 1934 when Hawke's Bay had been halted after three defences. During the intervening years, Auckland had developed a reputation for spectacular, free-flowing Rugby, but seemed to lack the will to strive for a consistent record.

Two old campaigners in F. R. Allen and J. G. Simpson were to be the architects of a changed philosophy, and so for the next 3½ years and a record of 25 defences the shield remained at Eden Park.

Many Rugby pundits, particularly those

**By J. B. Buxton,  
HB's Assistant Coach**

domiciled in northern parts, felt that Auckland brought a new dimension to Ranfurly Shield Rugby. However, it is debatable whether Auckland's style was any more attractive than the teams already discussed. Certainly, the tries were scored, but it is worth noting that the humble forward, until now regarded mainly as a work horse, had emerged as a scoring weapon.

Taranaki next appeared on the scene, by capturing the trophy from Wellington after the latter's first defence. Ferdinand's successful defences continued for 16 games, during which time it appeared that the shield was to be defended at all costs.

Try-scoring rates dropped appreciably, while dropped goals registered rose alarmingly. Only those nurtured on the traditional Taranaki game could fully appreciate the rugged, slogging style of the yellow and black forwards, aided and abetted by backs who were not always enterprising.

To sum up, I am unable to say which post-war team was "the greatest". Technique, tactics, players and the rules change, but if one believes in the time-honoured principles of Rugby as a running and passing game, with the forwards setting up scoring opportunities for backs, then I feel the laurels must be awarded to Otago, with Canterbury not far behind.

As for the latest custodians of the shield, I must leave final judgment to many thousands of critics, better qualified than I, who made such a grand contribution towards a truly memorable season.

**Let it be said, though, that Hawke's Bay strives not for record, but to play Rugby according to the real traditions of the game.**

# 65 YEARS OF SHIELD HISTORY

Although the Ranfurly Shield was first presented in 1902, it was not played for until 1904, but has been challenged for each year since then, with the exception of the war years (1915-18 and 1940-45).

The following is a complete record of all matches.

## Early Years

1904.—Wellington beat Auckland, 6-3; Canterbury, 6-3; Otago, 15-13.

1905.—Wellington drew with Wairapa, 3-3; beat Hawke's Bay, 11-3. Auckland beat Wellington, 10-6.

1906.—Auckland beat Canterbury, 29-6; Taranaki, 18-5; Southland, 48-12; Wellington, 11-5.

1907.—Auckland beat Buller, 21-0; Hawke's Bay, 12-3; Wanganui, 6-5.

1908.—Auckland beat Marlborough, 32-0; Wellington, 24-3; Taranaki, 9-0; Otago, 11-5.

1909.—Auckland beat Taranaki, 18-5.

1910.—Auckland beat Hawke's Bay, 11-3; drew with Wellington, 3-3; beat Taranaki, 16-9; Canterbury, 6-4.

1911.—Auckland beat South Auckland, 21-5; Poverty Bay, 29-10.

1912.—Auckland beat Taranaki, 6-5; Wellington, 12-0; drew with Otago, 5-5.

1913.—Auckland beat Wellington, 6-5; Poverty Bay, 27-3. Taranaki beat Auckland, 14-11.

1914.—Taranaki beat Wanganui, 17-3; Manawatu, 11-3; Horowhenua, 14-3; Wairapa,

22-3; Canterbury, 6-5; Southland, 6-0. Wellington beat Taranaki, 12-6.

## Between Wars

1919.—Wellington beat Canterbury, 21-8; Taranaki, 18-10; Canterbury, 23-9; Auckland, 24-3; Wanganui, 30-3.

1920.—Wellington beat Canterbury, 15-3; Bay of Plenty, 22-3; Taranaki, 20-9; Hawke's Bay, 20-5; Auckland, 23-20; Taranaki, 16-5; Wanganui, 20-14; Auckland, 20-3; South Canterbury, 32-16; Otago, 16-5. Southland beat Wellington, 17-6.

1921.—Southland beat Otago, 10-8. Wellington beat Southland, 28-13; Auckland, 27-19; Otago, 13-8.

1922.—Hawke's Bay beat Wellington, 19-9; Bay of Plenty, 17-16; King Country, 42-8.

1923.—Hawke's Bay beat Wairapa, 6-0; Wellington, 10-6; Poverty Bay, 15-0; Canterbury, 9-8; Horowhenua, 38-11; Auckland, 20-5.

1924.—Hawke's Bay beat Wairapa, 30-14; Poverty Bay, 46-10; Nelson, 35-3; Auckland, 23-6; Manawatu, 31-5.

1925.—Hawke's Bay beat Wairapa, 22-3; Canterbury, 24-18; Southland, 31-12; Taranaki, 28-3; Wellington, 20-11; Otago, 34-14.

1926.—Hawke's Bay beat Wairapa, 77-14; Wanganui, 36-3; Wellington, 58-8; Auckland, 41-11; Canterbury, 17-15.

1927.—Wairapa beat Hawke's Bay, 15-11; Bush, 53-3. Hawke's Bay beat Wairapa, 21-10 (subsequently lost by protest). Manawhenua beat Wairapa, 18-16; Taranaki, 9-3; Wanganui, 25-6. Canterbury beat Manawhenua, 17-6.

1928.—Canterbury beat South Canterbury, 29-9. Wairapa beat Canterbury, 8-7; Bush,

57-11; Marlborough, 26-8; Wellington, 9-3; Manawhenua, 31-10.

1929.—Wairapa beat Hawke's Bay, 10-6; Auckland, 17-14; Manawhenua, 37-16; Canterbury, 17-12. Southland beat Wairapa, 19-16.

1930.—Southland beat Wanganui, 19-0; Otago, 37-5; Hawke's Bay, 9-6. Wellington beat Southland, 12-3.

1931.—Wellington beat Southland, 36-13. Canterbury beat Wellington, 8-6; Otago, 17-6.

1932.—Canterbury beat South Canterbury, 11-5; Auckland, 14-0; West Coast, 5-3; Wellington, 9-8; Buller, 13-0; Waikato, 17-6.

1933.—Canterbury beat Ashburton, 31-7; Southland, 21-3; Otago, 8-5; West Coast, 23-14; Buller, 13-3; drew with Taranaki, 15-15; beat South Canterbury, 6-3; King Country, 36-0.

1934.—Hawke's Bay beat Canterbury, 9-0; beat Wanganui, 29-16; Taranaki, 23-8. Auckland beat Hawke's Bay, 18-14.

1935.—Auckland beat North Auckland, 29-8. Canterbury beat Auckland, 16-13; Wairapa, 27-16; Southland, 8-3; West Coast, 16-11; South Canterbury, 12-11. Otago beat Canterbury, 15-6.

1936.—Otago beat Southland, 16-3; Auckland, 14-5; Manawatu, 11-5; South Canterbury, 26-3; Canterbury, 16-0; North Auckland, 30-0; Wellington, 16-3; West Coast, 30-0.

1937.—Southland beat Otago, 12-7.

1938.—Otago beat Southland, 7-6; Canterbury, 16-7; South Canterbury, 27-16; North Otago, 12-0; Hawke's Bay, 4-0; Taranaki, 24-3. Southland beat Otago, 10-5; Wellington, 10-3; Ashburton County, 20-16.

1939.—Southland beat Otago, 23-4; Manawatu, 17-3; Bush, 38-0; Ashburton County, 50-0.

# Post-War

1946.—Southland beat Otago, 3-0; Canterbury, 11-3; South Canterbury, 35-9; Wairarapa, 12-3; North Otago, 15-3.

1947.—Otago beat Southland, 17-11; North Auckland, 31-12; Auckland, 18-12; Southland, 8-0; North Otago, 42-3.

1948.—Otago beat Southland, 25-0; Canterbury, 31-0; Wanganui, 20-3; Hawke's Bay, 12-6; Poverty Bay, 40-0; South Canterbury, 36-6; Wellington, 11-0.

1949.—Otago drew with Buller, 6-6; beat Manawatu, 22-3; Southland, 6-3; Waikato, 27-5; Taranaki, 6-5; Auckland, 16-5.

1950.—Otago beat Southland, 22-3. Canterbury beat Otago, 8-0. Wairarapa beat Canterbury, 3-0. South Canterbury beat Wairarapa, 17-14. North Auckland beat South Canterbury, 19-9.

1951.—North Auckland beat Bay of Plenty, 16-12; Thames Valley, 19-6. Waikato beat North Auckland, 6-3; Auckland, 14-6; Bay of Plenty, 32-10; Taranaki, 21-12; Wanganui, 14-0.

1952.—Waikato beat Thames Valley, 17-3; Wairarapa, 14-0. Auckland beat Waikato, 9-0. Waikato beat Auckland, 6-3; King Country, 18-8; Manawatu, 12-3; West Coast, 20-6.

1953.—Waikato beat Bay of Plenty, 19-3; North Auckland, 24-5; drew with Taranaki, 3-3. Wellington beat Waikato, 9-6; Southland, 22-6; East Coast, 42-0; Otago, 9-3; Taranaki, 26-3; Auckland, 23-6. Canterbury beat Wellington, 24-3; Buller, 19-3.

1954.—Canterbury beat Southland, 18-10; Wairarapa, 16-3; South Canterbury, 21-11; drew with Waikato, 6-6; beat Taranaki, 11-6; West Coast, 8-0; drew with Otago, 9-9; beat Wanganui, 17-13; Buller, 22-0.

1955.—Canterbury beat Auckland, 12-6; South Canterbury, 19-6; Wellington, 30-11; North Auckland, 39-11; Otago, 15-8; West Coast, 20-11; Thames Valley, 24-11.

1956.—Canterbury beat Mid-Canterbury, 14-6; Hawke's Bay, 21-9; Wanganui, 19-6; South Canterbury, 38-17; Southland, 17-3. Wellington beat Canterbury, 8-0; Auckland, 9-6.

1957.—Wellington beat Bush, 22-9; Poverty Bay, 15-3; Wanganui, 34-5. Otago beat Wellington, 19-11; South Canterbury, 6-3. Taranaki beat Otago, 11-9.

1958.—Taranaki beat G.B.-Motueka, 56-8; Mid-Canterbury, 16-0; King Country, 15-11; Manawatu, 9-8; Wanganui, 22-9; drew with Wellington, 6-6; beat Waikato, 15-3; North Auckland, 14-3; Counties, 11-5.

1959.—Taranaki beat Nelson, 31-14; Wanganui, 17-11; Wellington, 22-6; Otago, 23-3. Southland beat Taranaki, 23-6. Auckland beat Southland, 13-9.

1960.—Auckland beat Thames Valley, 22-6; Counties, 14-3. North Auckland beat Auckland, 17-11; Poverty Bay, 24-3. Auckland beat North Auckland, 6-3; Manawatu, 31-8; Bay of Plenty, 9-6; Wellington, 22-9; Taranaki, 25-6; Canterbury, 19-18.

1961.—Auckland beat Hawke's Bay, 5-3; King Country, 17-3; Counties, 17-12; Otago, 14-9; Southland, 9-6; Wellington, 13-8; Waikato, 10-0; North Auckland, 26-11.

1962.—Auckland beat Thames Valley, 24-9; Bay of Plenty, 19-6; North Auckland, 8-3; West Coast, 52-6; Waikato, 15-11; Taranaki, 27-3; Canterbury, 15-6; Bush, 46-6; Wellington, 20-8.

1963.—Auckland beat Wairarapa, 22-8; Wanganui, 41-18; drew with Hawke's Bay, 3-3. Wellington beat Auckland, 8-3. Taranaki beat Wellington, 17-3; Wanganui, 14-12.

1964.—Taranaki beat Buller, 11-0; drew with Wanganui, 15-15; beat Wellington, 3-0; King Country, 21-0; Canterbury, 12-9; Wairarapa, 32-8; Waikato, 14-9; Manawatu, 6-3; North Auckland, 12-8.

1965.—Taranaki beat Bush, 33-6; Wanganui, 23-9; Wellington, 11-3; drew with Southland, 6-6; beat Hawke's Bay, 21-17. Auckland beat Taranaki, 16-11; Waikato, 14-6.

1966.—Auckland beat King Country, 14-6; drew with Canterbury, 11-11. Waikato beat Auckland, 15-11. Hawke's Bay beat Waikato, 6-0.

1967.—Hawke's Bay beat Manawatu, 11-6; Waikato, 35-9; Wairarapa, 27-6; Southland, 29-6; Taranaki, 16-3; Otago, 9-8; Wellington, 12-12.

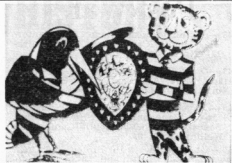
# The complete shield record

	P	W	D	L	F	A
Auckland	83	56	4	23	1258	767
Bay of Plenty	7	—	7	56	144	
Buller	7	—	1	6	12	105
Bush	6	—	6	6	35	249
Canterbury	72	45	4	23	1012	686
Counties	3	—	—	3	20	42
East Coast	1	—	—	1	0	42
G.B.-Motueka	1	—	—	1	8	56
Hawke's Bay	51	36	2	23	1055	469
Horowhenua	2	—	—	2	14	52
King Country	7	—	—	7	36	163
Manawatu	10	—	—	10	47	161
Manawhenua	6	3	—	3	84	110
Marlborough	2	—	—	2	8	58
Mid-Canterbury	5	—	—	5	29	131
Nelson	2	—	—	2	17	66
N. Auckland	16	5	—	11	163	266
N. Otago	3	—	—	3	6	69
Otago	58	35	3	20	824	466
Poverty Bay	7	—	—	7	29	196
S. Canterbury	15	1	—	14	141	329
Southland	42	20	1	21	521	508
Taranaki	61	34	5	22	753	638
Thames Valley	5	—	—	5	35	106
Waikato	28	14	2	12	301	274
Wairarapa	29	12	1	16	420	486
Wanganui	19	—	—	18	151	428
Wellington	67	37	4	26	881	705
West Coast	9	—	—	9	68	212

# The Men From U.N.C.L.E.

HAWK-EYE SOLO AND LENNY LEOPARDARKIN

The series of lighthearted articles, "The Men from U.N.C.L.E.," sponsored by the Leopard Brewery Ltd., Hastings, appeared in the Press each night before the Ranfurly Shield challenges. "The Men from U.N.C.L.E.," written by Jock Stevenson and illustrated by Trevor Hayter, created great amusement.



HAWK-EYE and Lenny with the U.N.C.L.E. "Secret weapon."



MANAWATU.—Pegasus . . . scratched!



WAIKATO.—Wot! . . . No Mooloo Juice?



WAIRARAPA.—Stag party!



SOUTHLAND.—Next course . . . oysters!



TARANAKI.—Steak Ferdinand



WELLINGTON.—King of Tail Twisters!



## EARLIER H.B. SHIELD WINNERS

1922

### AT RIGHT:

**Back row:** W. Barclay, J. C. MacGregor, C. J. Brownlie, J. A. McNab, B. A. Grenside, L. A. Miller, L. H. Hingston.

**Second row:** R. L. Dine, S. Gemmell, G. L. Yates, J. H. Scott, N. J. Daley, J. K. Kirwin, J. M. Blake, W. R. Irvine.

**Third row:** W. V. Blake, C. S. Findlay (manager), A. Kirkpatrick (captain), H. E. Seed (manager), N. L. Kivell (vice-captain).

**Front row:** D. H. C. O'Donoghue, U. W. Batchelor, M. Wynn.



1934

### AT LEFT:

**Back row:** E. G. Apsey, C. Le Quesne, R. Skittrup, M. Kelly, T. W. D. Ireland, E. Evans.

**Middle row:** B. J. Mahony, E. Jackson, E. R. G. Steere (captain), J. Le Quesne, H. Shirreffs, S. Reid, H. L. Bradley.

**Front row:** L. Clothier, Hawea-Mataira, C. Smith, C. H. Rolls, W. R. Collins, J. Vartan.



**UNDERNEATH THE STAND**, away from the cheering crowd, the autograph hunters, the back-slapping, the Hawke's Bay team — tired and weary — slump down on the benches to reflect on another match won — of what was achieved or what might have been achieved. Neil Thimbleby (left), Mick Duncan (centre) and Neil Armstrong pause pensively before changing and turning their thoughts toward another challenger — a week later.



**SHIELD CRUSH** . . . these were among more than 150,000 people who attended the seven Ranfurly Shield matches during the season.

