

Burwell

Napier
Operatic
Society
2003



Napier Operatic Society President - *Lesley Reid*

Welcome to this performance of "Buddy - The Buddy Holly Story".

The 3rd February 1959 was "the day the music died". Just as the world was perched on the edge of the most exciting musical decade in history, the young genius who made it all possible was tragically killed, aged just 22, leaving behind a legacy of over 30 timeless hits.

"Buddy - The Buddy Holly Story" tells his story, presents his music and features some of Buddy's greatest hits, including "That'll Be The Day", "Peggy Sue", "True Love Ways", "Heartbeat" and many, many more. With the Big Bopper's "Chantilly Lace" and Ritchie Valens' "La Bamba", taking you towards total music overload, this dazzling and beautifully staged extravaganza will have you the audience rocking and rolling in the aisles.

We are again privileged to have David Sidwell of Hamilton as our Director. David has previously directed "Jesus Christ Superstar" and our most recent production of "Les Misérables" for the Society. He has been ably assisted by Hawke's Bay's own Dean Roberts as Musical Director, with Tessa-May Brown as Vocal Co-ordinator, and Belinda Harvey as Choreographer. We hope they have all enjoyed working with Napier Operatic and we look forward to relishing their talents in the future.

On behalf of Napier Operatic, I extend our gratitude to you our patrons, for your ongoing support.

The Society sincerely thanks our Sponsor, Esam Cushing & Co for their generous and ongoing support. We are extremely grateful to Brian Martin and Sir Selwyn Cushing; their benevolence enables the Society to stage productions of the calibre you are about to see.

So please savour this rock 'n' roll tribute to the man, the music... the legend!

Lesley Reid

Kingdom Music

...LET THE MUSIC PLAY

"Kingdom Music stores are pleased to be a part of the MusicWorks Group, the largest musical instrument retail group in New Zealand, consisting of 34 stores. We **GUARANTEE** the **BEST PRICES** from the **BEST BRANDS**, with the **BEST SERVICE**".



Jamie Houston B.Mus
Manager Napier Branch

Kingdom Music Works
Proud Supporter
of Napier
Operatic Society

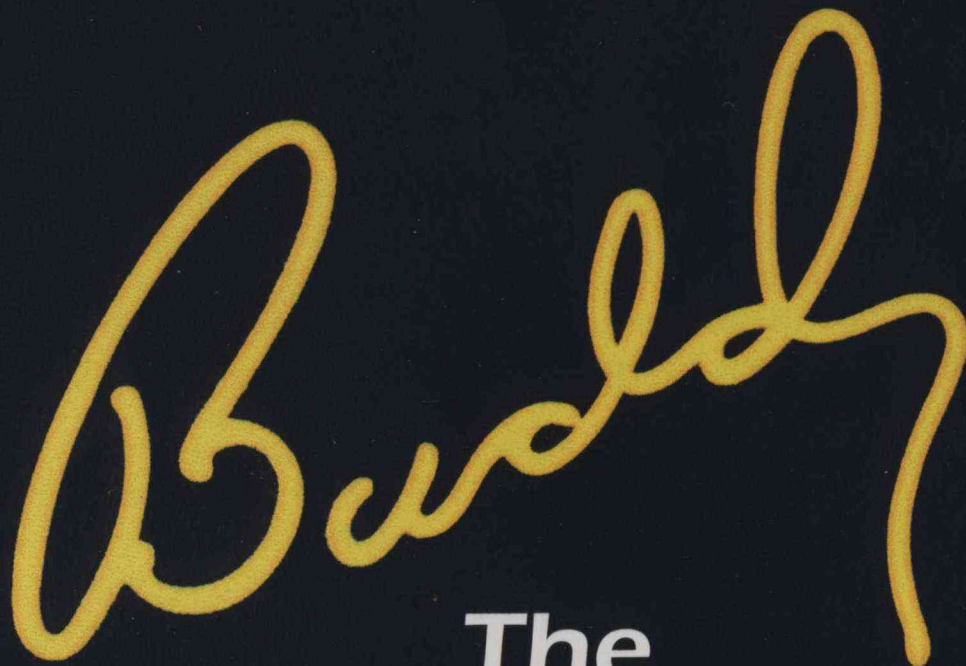


Your Local MusicWorks Dealer
NAPIER 128 Dalton St
Ph 834 0900
HASTINGS 105 Market St
Ph 878 9999

NAPIER OPERATIC SOCIETY

By arrangement with Paul Elliot, Laurie Mansfield & Greg Smith
Buddy Holly Productions Ltd

presents



Buddy Holly

The BUDDY HOLLY Story

Written by ALAN JANES

Directed by DAVID SIDWELL

Musical Director DEAN ROBERTS

Choreographer BELINDA HARVEY

Vocal Co-ordinator TESSA-MAY BROWN

Lighting Design PAUL COLLIER

Sound Design TERRY MOLLOY, Redd Acoustics

From an original idea by Laurie Mansfield

Additional material by Rob Bettinson

**NAPIER MUNICIPAL
THEATRE**

4 - 12 APRIL 2003

The use of cameras and recording devices is prohibited.
Patrons are requested to ensure all cell phones are switched off.



Director - David Sidwell

Director...musical director...orchestrator/arranger...pianist...lecturer...David has 35 years' involvement in music and theatre under his belt.

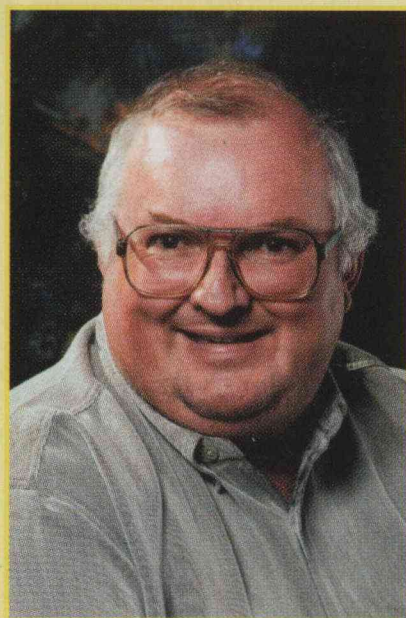
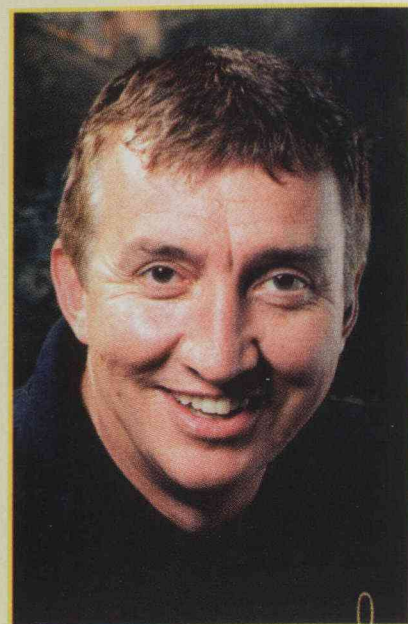
As Musical Director, some of David's many credits include Chicago, Evita, Annie, Hello Dolly!, Nunsense I & II, Juke Box, A Chorus Line, Les Misèrables, Gypsy, Caught in the Act (with Tina Cross), and South Pacific.

David has also directed countless productions. Among them, A Funny Thing Happened on the Way to the Forum, Mack and Mabel, The Best Little Whorehouse in Texas, Chess - the musical, Big - the musical, Jesus Christ Superstar, 70, Girls, 70, Les Misèrables, Tell Me On A Sunday, Buddy - The Buddy Holly Story.

Working professionally with theatre groups both in New Zealand and Australia, David has had successful seasons of Andrew Lloyd Webber & Friends (Gold Coast & New Zealand), Westend to Broadway with the Wellington Sinfonia, Tell Me On A Sunday (Circa Theatre), the critically acclaimed Wellington production of West Side Story, and the New Zealand premiers of The Secret Garden and Big - the musical.

David is highly regarded in New Zealand Music Education and works extensively as a composition and performance music moderator for the New Zealand Qualifications Authority. He currently lectures in music in the Department of Media Arts at The Waikato Institute of Technology (Wintec).

Having grown up in Central Hawkes Bay, David has enjoyed the opportunity to be back in the Bay and to work with such a dedicated and truly talented company and production team to bring you this latest fresh production of 'Buddy' - The Buddy Holly Story.



Musical Director - Dean Roberts

This is the fourth show Dean has been involved in with Napier Operatic. After the great rock & roll of 'Return to the Forbidden Planet', he is back to get you all up and dancing with 'Buddy'.

Dean is one of the many school teachers involved with 'Buddy', teaching at Napier Intermediate for the past 6 years. This time his wife Karoline joins him in the band on Trombone

Choreographer - Belinda Harvey

Belinda started dancing at the age of 3, learning classical ballet. At the age of 7 she began studying tap, jazz and theatre.

In 1999 Belinda graduated the 3 year National Diploma in Teaching Dance course at the NZ School of Dance, also gaining an Associate of the ISTD. Since moving to Hawkes Bay, Belinda has opened her own Dance Studio in Napier. Belinda has always had a love of theatre and has been involved with many stage shows, both in the Wairarapa and Hawkes Bay, whether it be backstage, onstage as a performer or as a choreographer.





Vocal Co-ordinator - Tessa-May Brown

As Vocal Co-ordinator for "Buddy", Tessa has been having a 'busmans' holiday as her day job is teaching singing! However, she has thoroughly enjoyed the task and delighted in being able pass on to the cast, particularly the newer members, her expertise and experience.

Tessa was happy to be asked to work once again with the Napier Operatic Society and considers herself lucky to have another opportunity to be on the production team with Director David Sidwell. Couple this with an enthusiastic and talented cast and the job has been a real pleasure.

Assistant to the Director - Sonya Aifai

Sonya has been an active member of Napier Operatic for 15 years, working in a variety of areas ranging from props to catering to directing the Theatre School productions. She has been a member of the Executive committee for 6 years and enjoys researching new shows as a part of the show selection committee.

Sonya has enjoyed working with David in the past 3 shows he has directed for NOS. She has learnt a great deal to help her with her interest in directing.

To the cast of "Buddy", Sonya would like to say thank you for your hard work and she has enjoyed working with you.



The BUDDY HOLLY Story

Buddy Holly began life as Charles Hardin Holley on the 7th September 1936. He was the fourth child of Ella Holley who decided to call him Buddy, which was traditionally the nickname of the youngest member of the family. In his younger days he was influenced by Hank Williams and Jimmy Rodgers songs and began to play the piano at the age of twelve. The surname Holley became Holly after Buddy's name was miss-spelt on a recording contract in 1956 and he never changed it.

BUDDY HOLLY & THE CRICKETS

There were many stories of how the Crickets came to be named. Many early rock and roll groups chose names based on birds, jewels, flowers and astronomical objects. Buddy decided to consider an insect for the groups name. They came up with the idea of the Crickets.

In 1957, artists were usually limited to four singles per year or maybe an LP. This was not anywhere near large enough an outlet for Buddy's creative genius.

Even before *That'll Be The Day* had entered the American chart, the first Buddy Holly solo single was released. The Crickets next session produced the immortal *Peggy Sue* although this was issued under Buddy's own name on Coral, it became a worldwide instant hit. *Peggy Sue* was the second Crickets release and the third million seller for Buddy and the group. In December, Buddy Holly and the Crickets were fast becoming household names to millions of teenagers.

That Christmas they starred with Fats Domino, Jerry Lee Lewis and The Everly Brothers at the Paramount Theatre, New York.

1959

Early in January 1959, Buddy headlined a package show called "The Winter Dance Party" which also featured Richie Valens (whose recording of Donna was no.10 in the U.S charts), Dion and the Belmonts, and 'The Big Bopper'

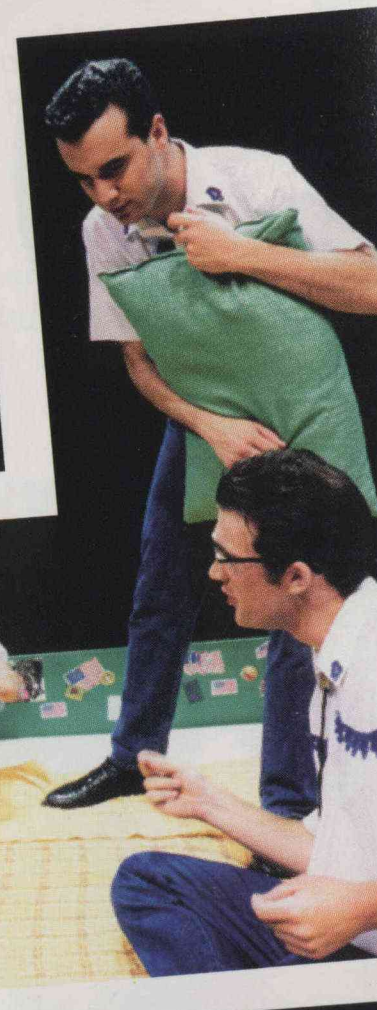
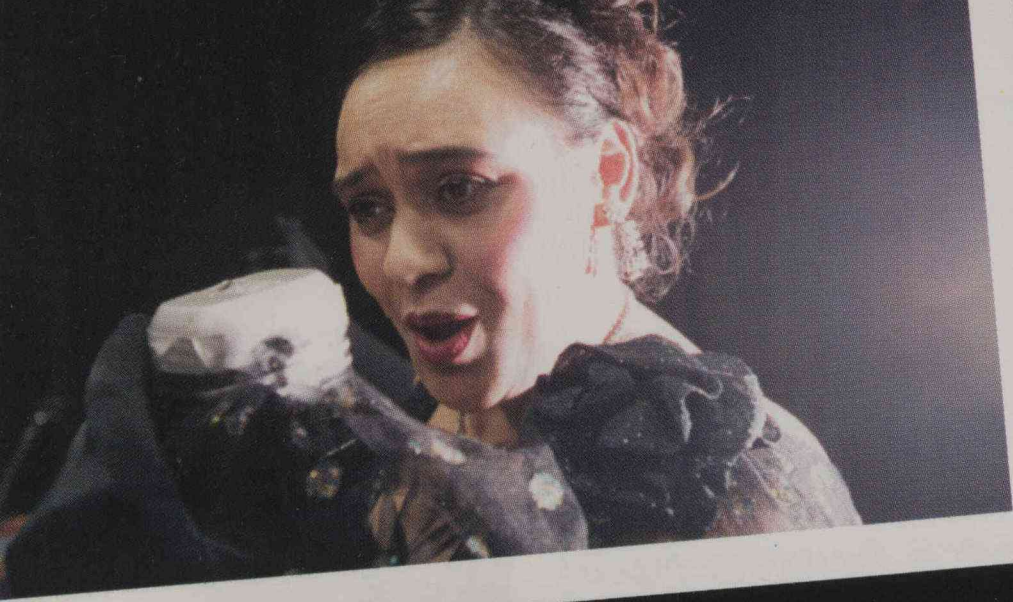
By February the tour had reached Clear Lake, Iowa and was due to appear the next evening at the Moorehead Armory, Minnesota. Earlier Buddy had chartered a four seater plane to take two of his group, Waylon Jennings, Tommy Allsup and himself to Moorehead after the show at Clear Lake so they could get decent nights sleep. When "The Big Bopper" and Ritchie Valens heard of Buddy's arrangement, Jennings and Allsup were persuaded by them to give up their seats on the plane, as they also relished a good nights sleep instead of a long cold trip on the bus.

The plane took off shortly before 1.00am and headed in a northwest bearing, in the direction of Fargo - the nearest airport for the following evening venue. The snow and overcast sky obliterated all visible landmarks and the horizon. The gusty wind caused most of the instruments to fluctuate. The pilot may never have realised that while executing what he thought was a climbing turn, the aircraft was actually descending. The official report later said: "When approximately five miles had been traversed, the tail light of the aircraft was seen to descend gradually until it disappeared from sight. Following this, many unsuccessful attempts were made to contact the aircraft by radio. The wreckage was found in a field later that morning".

The tragic news that Buddy Holly, Ritchie Valens and "The Big Bopper" (JP Richardson) had died in a plane crash in America's Midwest, not only stunned millions of fans around the world, but left a vacuum in rock 'n' roll history that has never been filled.

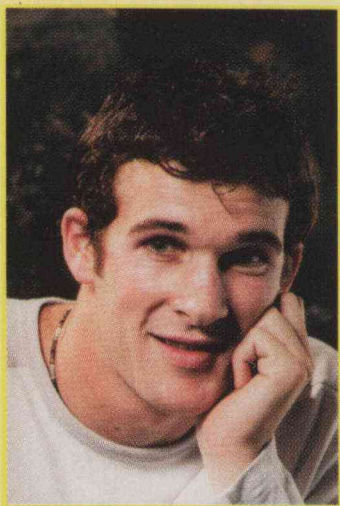


3 February 1959



Buddy

CAST - Principals



James Schaw -BUDDY HOLLY

James has been involved in theatre for 6 years now. His debut on stage was a performance of 'Love a Rainy Night' for Central Hawkes Bay College.

After studying at the Eastern Institute of Technology, he has performed in 4 shows for Napier Operatic Society. After taking a year off to travel overseas, he has relished taking up the role of Buddy Holly in this production.

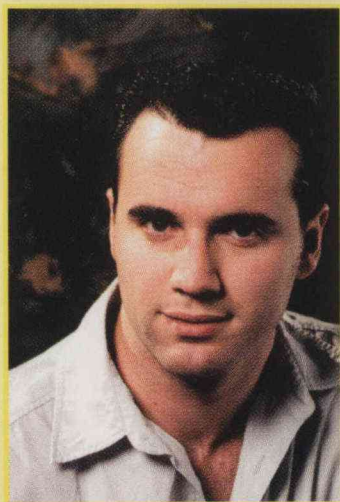
This being the biggest role in his career to date, he is very excited about sharing this experience with you.



Andrew Burch -JERRY ALLISON

Theatre is Andrew's one true passion in life. Since birth he has sung, danced and clowned his way through the world he knows. 'Buddy' is the tenth show Andrew has had the pleasure to be involved with for Napier Operatic Society.

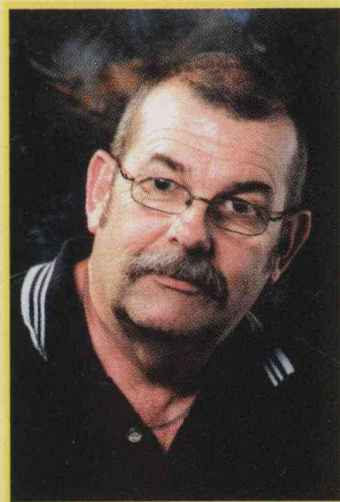
Andrew hopes to leave our shores at the end of this year to pursue a professional career in Performing Arts.



Scott Buttery -JOE B MAUDLIN

After many years backstage as a child/teenager, the discovery that Scott could actually (almost) hold a tune, led to a switch to on-stage involvement.

Scott says that he really enjoys the challenge of on-stage work, despite the occasional jeers from the backstage boys and an ongoing reluctance to wear make up. Though it has been hard fitting rehearsals around running a restaurant and part time DJ at Shed 2 as 'Special Agent 002', Scott has thoroughly enjoyed the experience. - Rock 'n Roll!



Chris Davidson -HIPOCKETS DUNCAN

This is Chris Davidson's third show for Napier Operatic and follows his roles as Basil in 'Dirty Weekends' and Prospero in 'Return to the Forbidden Planet'.

Although (surprisingly) Buddy Holly's supernova burned out before Chris really got into music, his influence on groups such as the Rolling Stones and Blind Faith make him a really special musician.

Chris is enjoying the role of Hipockets as it is giving him another chance to develop his Texan drawl, but he hopes never to be mistaken for George W Bush!



Ross Corbett -NORMAN PETTY

Ross enjoys singing in a variety of genre, from Choral to Opera, Folk, Rock, Oratorio, Barbershop, Jazz and Musical Theatre. His involvement with Napier Operatic began in 1980 with 'Jesus Christ Superstar' and resumed in the 1995 production of 'Les Misérables'. Since then he has taken lead roles with Napier Operatic in 'Chess' - the Arbitor, 'Pirates of Penzance' - The Pirate King and 'Return to the Forbidden Planet' - Captain Tempest. Ross sings with the Linden Singers and Bay Harmony, so having a non-singing lead role is a new experience - although he is thoroughly enjoying his Hayrider and Clearlake vocalising in 'Buddy'.

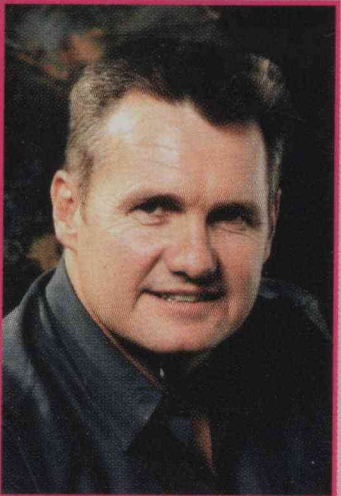
CAST - Principals continued



Samantha Grant-Smith -**MARIA ELENA**

Samantha is pleased to be joining the cast of 'Buddy' and playing Buddy's wife Maria Elena and for this to be her second production with Napier Operatic Society.

Samantha, originally from London, England, trained at the Guildford School of Acting and has 5 years of professional theatre behind her. Her experience includes many national tours around the UK and some West End shows, including Les Misèrables at the Palace Theatre, London and the 10th Anniversary concert at the Royal Albert Hall. She now lives in Havelock North with her husband Greig and wants to thank him for all his love and support.



Jeff Foley -**BIG BOPPER**

Jeff, a local detective, is married with 4 children. A relative newcomer to theatre he performed in his first show, 'HMS Pinafore', in 2000 at the ripe young age of 37. His latest show was last years production of Les Misèrables, which he relished being a part of.

He loves Rock 'n' Roll and is enjoying being involved in 'Buddy' and working with such a talented cast.



Shane McLachlan -**RICHIE VALENS**

This is Shane's second show with Napier Operatic, previously appearing in 'Jesus Christ Superstar'. He is excited about 'Buddy' and can't wait to entertain you all.

Shane's boisterous and enthusiastic nature ensures he is never far from trouble in rehearsal. The prospect of playing Ritchie Valens is an opportunity that Shane is relishing. Previous roles include Huckleberry Finn in 'Big River' and Amos in 'Chicago' for Taradale High School.



Edina McFarland -**VI PETTY**

Edina has always enjoyed music and singing and last year she found time away from her teaching position to join Napier Operatic Society and thoroughly enjoyed her role in 'Some Enchanted Evening'. At St John's College she has helped direct many of the school's musical productions and is now pleased to be on stage rather than back stage. She doesn't know why she left it so long.



Kerry Unsworth -**MISS SANTIAGO**

Having joined Napier Operatic at the tender age of 17 years as 'Sandy' in the first production of 'Grease', Kerry has enjoyed learning the craft in countless productions since.

She is enjoying meeting up with many friends both onstage and backstage, as well as making new ones and is in awe of the talent that the Hawke's Bay district continues to produce.

She wishes to thank her husband and 2 children for their understanding and for letting her do what she loves.

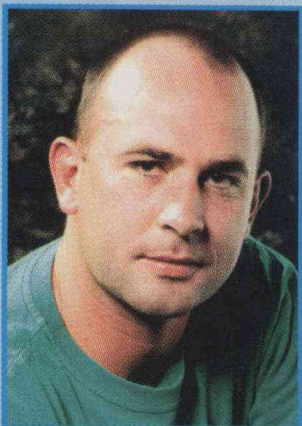


CAST - Company



Alison Beal -MISS APOLLO

Ali completed a Diploma in Performing Arts - Voice at the EIT in 1996/97, followed by a Diploma in Performing Arts - Opera in Auckland in 1998. She performed in 'Sweeny Todd' and 'Grease' while attending Taradale High School, as well as being in the stage band, orchestra and choir. Last year she was a member of the cast of 'Best Little Whorehouse in Texas' for Theatre Hawkes Bay. She is currently a member of Input Entertainment, an improvisational acting group, as well as International Actors of Mystery also an improvisational acting group. She is really enjoying the challenge of being a part of 'Buddy', which is her first show for Napier Operatic. She hopes y'all have a good time and enjoy the show.



Trent Dallimore -NIKI SULLIVAN

'Buddy' is Trent's first major production for Napier Operatic Society after appearing in a cameo role in 'Return to the Forbidden Planet'. He has enjoyed rehearsing for the show and has come to appreciate the enormous amounts of work the whole team puts into each show. Trent would like to thank everyone for their support and patience over the past three months, particularly Lou and TJ, and promises he will get his cricket pads back on next season.



Michael Kedzlie -APOLLO M C

Michael was born in the Chatham islands and raised in Dunedin. His last performance was in the Dunedin Operatic Society's production of 'Half a Sixpence' back in 1980. He has been involved in the hospitality industry since 1986, firstly in a bar, then as a disc jockey for 4½ years, professionally modelling for 2 years, an Elvis impersonator off and on for 7 years and lastly a restaurant/bar owner and HB Rugby referee. Being in 'Buddy' is another challenge in an exciting region.



Julie Marr -SHIRLEY

After 'Les Misérables' Julie said she would have a break, but just could not resist auditioning for "Buddy" and working with David again. Over the last 22 years Julie has done fourteen shows with Napier Operatic Society, also helping backstage doing make up and dressing. She just cannot get enough of theatre! Rehearsals have been fun, energetic (she wishes she was 20 again) with lots of laughs. Enjoy the show everyone! Thank you to Rochelle and Bridgette again, for being patient, supporting daughters. 'Buddy' just rocks - rock with it!!



Sarah Mills -CANDY

Sarah has been involved in theatre since high school, where she was part of the company in many musicals and had the lead role in several dramas. She has been involved in Little Theatre while at University and since leaving has stayed involved. She spends a lot of her spare time in the water, diving or water skiing and loves the outdoors. Sarah has only lived in Napier a short time and is employed in Customer Services at Amcor Kiwi Packaging in Hastings. She says the best thing about being in 'Buddy' is meeting new people. She hopes always to be involved in some sort of theatre.



Carol Williams -MARY LOU SOKOLOF

Carol has had a great love for performing since 1985 and has appeared with Central HB College, Waipawa M & D, Wellington College of Education and Stratford on Stage. She has played many roles, a highlight being Eliza in 'My Fair Lady'. Carol appeared in 'Les Misérables' last year with Napier Operatic Society and loved it. Having seen 'Buddy' in London and enjoying it immensely, she could not pass up the opportunity to be involved.



Buddy

ACT ONE

Hayriders – Rose of Texas – Do You Think of Me Darling? – Ready Teddy - Wash Day Jingle – That'll Be the Day – Blue Days Black Nights – Ollie Vee - Every Day – Gonna Have a Good Time – Party Party – True Love – Not Fade Away – Peggy Sue – Hold Me Close – Oh Boy

ACT TWO

Astoria Jingle – Think it Over – Chantilly Lace – Maybe Baby – Peggy Sue got Married – Heartbeat – La Bamba – Its Raining in My Heart – It Doesn't Matter Anymore – Rave On – Sometimes We'll Sigh – Johnny B Goode – Oh Boy

CAST / PARTS

BUDDY HOLLY
James Schaw

JERRY ALLISON
Andrew Burch

JOE B MAUDLIN
Scott Buttery

HIPOCKETS DUNCAN
Chris Davidson

NORMAN PETTY
Ross Corbett

BIG BOPPER – JP RICHARDSON
Jeff Foley

RITCHIE VALENS
Shane McLachlan

MARIA ELENA
Samantha Grant-Smith

VI PETTY
Edina McFarland

MISS SANTIAGO
Kerry Unsworth

NIKI SULLIVAN
Trent Dallimore

MISS APOLLO
Alison Beal

APOLLO MC
Michael Kedzlie

MURRAY DEUTCH
Trent Dallimore

HAYRIDERS LEADER
Ross Corbett

HAYRIDERS GUITAR
Edina McFarland

HAYRIDERS DOUBLE BASS
Shane McLachlan

HAYRIDERS DRUMS
Trent Dallimore

SUNDAY PARTY RADIO ENGINEER
Jeff Foley

DECCA PRODUCER
Jeff Foley

DECCA ENGINEER
Shane McLachlan

DECCA MUSICIAN
Ross Corbett

MC at CLEARLAKE
Chris Davidson

CANDY
Sarah Mills

SHIRLEY
Julie Marr

ENGLISH DJ
Trent Dallimore

TOMMY
Scott Avery

DION
Trent Dallimore

MARY LOU SOKOLOF
Carol Williams

JACKDAW
Michael Kedzlie

SNOWBIRD #1
Sarah Mills

SNOWBIRD #2
Samantha Grant-Smith

SNOWBIRD #3
Edina McFarland

SNOWBIRD #4
Julie Marr

SNOWBIRD #5
Carol Williams

DJ – KRWP
Trent Dallimore

DJ – KSPT
Michael Kedzlie

DJ – WDAS
Trent Dallimore

DJ – WWOL
Jeff Foley

DJ – KCLS
Shane McLachlan

JINGLE SINGER #1
Sarah Mills

JINGLE SINGER #2
Samantha Grant-Smith

JINGLE SINGER #3
Edina McFarland

JINGLE SINGER #4
Julie Marr

JINGLE SINGER #5
Carol Williams

MUSICIANS AT APOLLO
Band

MUSICIANS AT CLEARLAKE
Band

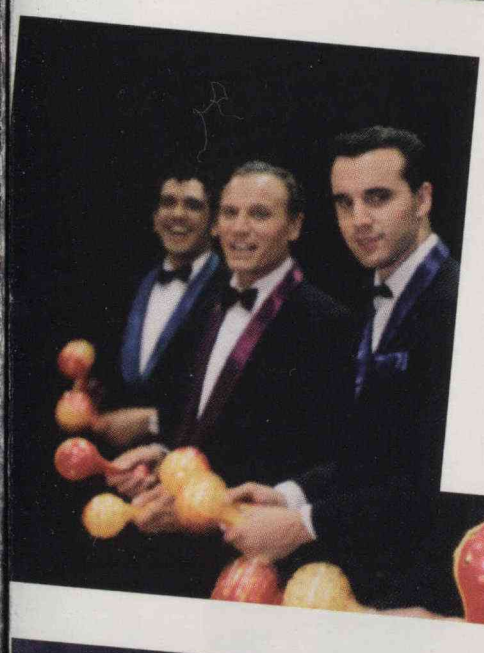
BAND

LEAD GUITAR
RHYTHM GUITAR
BASS GUITAR
DRUMS
KEYBOARD #1

Kevin Watson
Bruce Welby
Paul du Fresne
Dennis Maunder
Wendy Hunt

KEYBOARD #2
TRUMPET
TROMBONE
TENOR SAX

Frances Burch
Rachel Amies
Karoline Roberts
Dean Roberts



Buddy

BUDDY - Production Team

Production Manager/ Assistant to the Director	Sonya Aifai
Production Secretary	Chris Kenah
Co Stage Directors	Pierre van der Zwet Brendan Hey
Stage Manager	Lynda Shirras
Head Flyman	Harley Jones
Lighting Design	Paul Collier
Props Manager	Michelle Winter
Wardrobe Manager	Maria Peta
Make Up Supervisor	Philippa Jones
Hair Designer	Tanya Dylan
Rehearsal Pianist	Wendy Hunt



Back Row: Pierre van der Zwet, Paul Collier, Brendon Hey.
Middle Row: Harley Jones, Sonya Aifai, Donna O'Shaughnessy, Maria Peta.
Seated: Michelle Winter, Lynda Shirras, Chris Kenah, Wendy Hunt.
Front Row: Tanya Dylan, Philippa Jones.

Buddy - Production Crew

Stage Crew	Scott Avery, Glen Baker, Marc Collier, Tracy Crosse, Belinda Harvey, Neill Page, Darren Picone Colin Pritchard, Ian Scott.
Fly Crew	Patteson Aifai, Clive Buttery, Alan Howes, Alan Jones, Malcolm Kenah, Eion McKinnon, Nigel Stillwell.
Lighting Operators	Shane Byron, Paul Collier, Peter Eade, Anthony Gouder, Brent Smith
Properties Team	Pam Christensen, Anne Collier, Anita Davies, Allan Den Boer, Chris Kenah, Wendy Mooney
Wardrobe & Dressers	Bev Carroll, Norah Griffen, Margery Gurney, Gail Jones, Adrienne Parsons, Lois Reefman, Chris Shields.
Make Up	Gillian Andrews, Felicity Baker, Annette Clifford, Karen Green, Christine Hannah, Julie Johnston, Sarah Kerr, Sue Stilwell.
Hair & Wigs	Tracy Crosse, William Waitoa
Sound Desk	Robert Pay.
Radio Microphones	Darryl Mitchell, Sonya Aifai
Cast & Crew Suppers	Donna O'Shaughnessy assisted by: Chris Cheyne, Anne Clifford, Pam Christensen, Lola Davis, Di Fraser, Lynne Gibson, Bev O'Neill, Pat Parsonson.
Publicity Manager	Eileen van Dadelszen
Publicity Team	Barbara Brown, Donald Hurley, Gail Jones, Nic McGrath, Karen McLean, Darryl Mitchell, Dale Reid
Signs	Oliver Christoffersen, Gail Jones, Darryl Mitchell, Colin Pritchard
Programme	Chris Kenah, Darryl Mitchell
Front of House Managers	Dale and Ian Reid
Front of House Staff	Friends of the Society

We apologise if, due to programme deadlines, we have been unable to include all names in the programme.

ANOTHER SUCCESSFUL PROGRAMME PRODUCTION
FROM THE PHOTOGRAPHY OF CLIVE RALPH



CLIVE RALPH
PHOTOGRAPHER

*For all creative commercial
images call:*

025 439 865

or

(06) 835 7204

Officers of the Society



Patron
Peter Cox

Treasurer
Mary Crook

President
Lesley Reid

Immediate Past President
Neill Page

Vice President
Darryl Mitchell

Hon. Solicitor
John Matthews

Secretary
Tessa-May Brown

Hon. Photographer
Clive Ralph

Executive Committee

Chairman

Merv Dallimore

Members

Sonya Aifai, Clive Buttery,
Marc Collier, Jeff Foley,
Anthony Gouder, Irene McKinnon,
Norah Griffin, Alan Jones,
Colin Pritchard, Kaye Tristram

Life Members

Gwyn Ace, Cliff Allen, John Briggs,
Barrie Browne, Lyndsay Browne
Gillian Davies, Peter Eade, Donald Hurley,
Alan Jones, Brian Nathan, Colin Pritchard,
Ian Reid, Lois Reefman, Les Robertson,
Peter Shepherd, Fred Twyford,
Dawn Unsworth, Ros van der Ven

Acknowledgements

Coronation Street Neighbours
Hayter & Flemming Signs
Print Solutions
The Radio Network
Venables Willis Print
Kingdom Music
Raphael Antiques
Premier Plants

Napier Operatic Social Club
Carters
Fastway Couriers
Porritt Primary School
Maori Wardens
Shane Morrison
Sole Savers
Friends of the Society

NAPIER MUNICIPAL THEATRE 20 SEPT - 4 OCT 2003

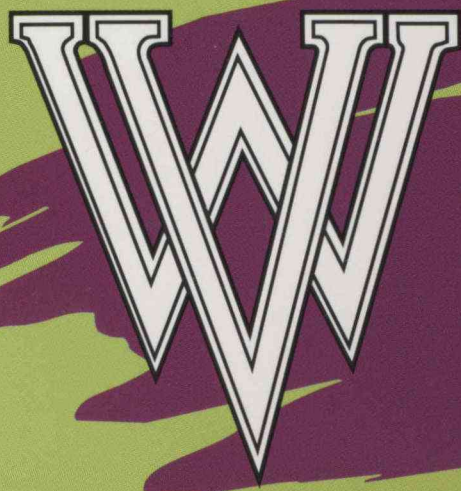
Directed by SYLVIA RICHARDSON

Musical Director STEPHEN GIBBS

Choreographer CELESTE STANIFORTH

The all new production
of the classic family story
of a little orphan girl
and her best friend
and their great
adventure!

Annie



PRINTING

A Smart Start

VENABLES • WILLIS

PHONE: 843 3171 • FAX: 843 2055

*For all your Printing Needs,
we're you're Best Buddy*



Hits of the 70's, 80's, 90's and Today

ESAM  CUSHING

*"If we rave on about crazy dealing
it's because we know how you'll be feeling.
In the markets that are reeling
we're so glad to be revealing.
That the little things we say and do
can make your investments work for you."*

*We are delighted again to support the Napier Operatic
Society in staging this lively production and to help foster
the artistic spirit and talent of our region.*

Esam Cushing & Co

*Hastings
04 April 2003*

Esam Cushing & Co
A New Zealand Stock Exchange Firm

127 Queen Street East, PO Box 241, Hastings, New Zealand - Telephone (06) 876 8129 Fax (06) 878 5059
Email: esam@esamcushing.co.nz Website: www.esamcushing.co.nz
Partners: Brian J Martin CA Sir Selwyn J Cushing KNZM, CMG, FCA, CMA, ACIS