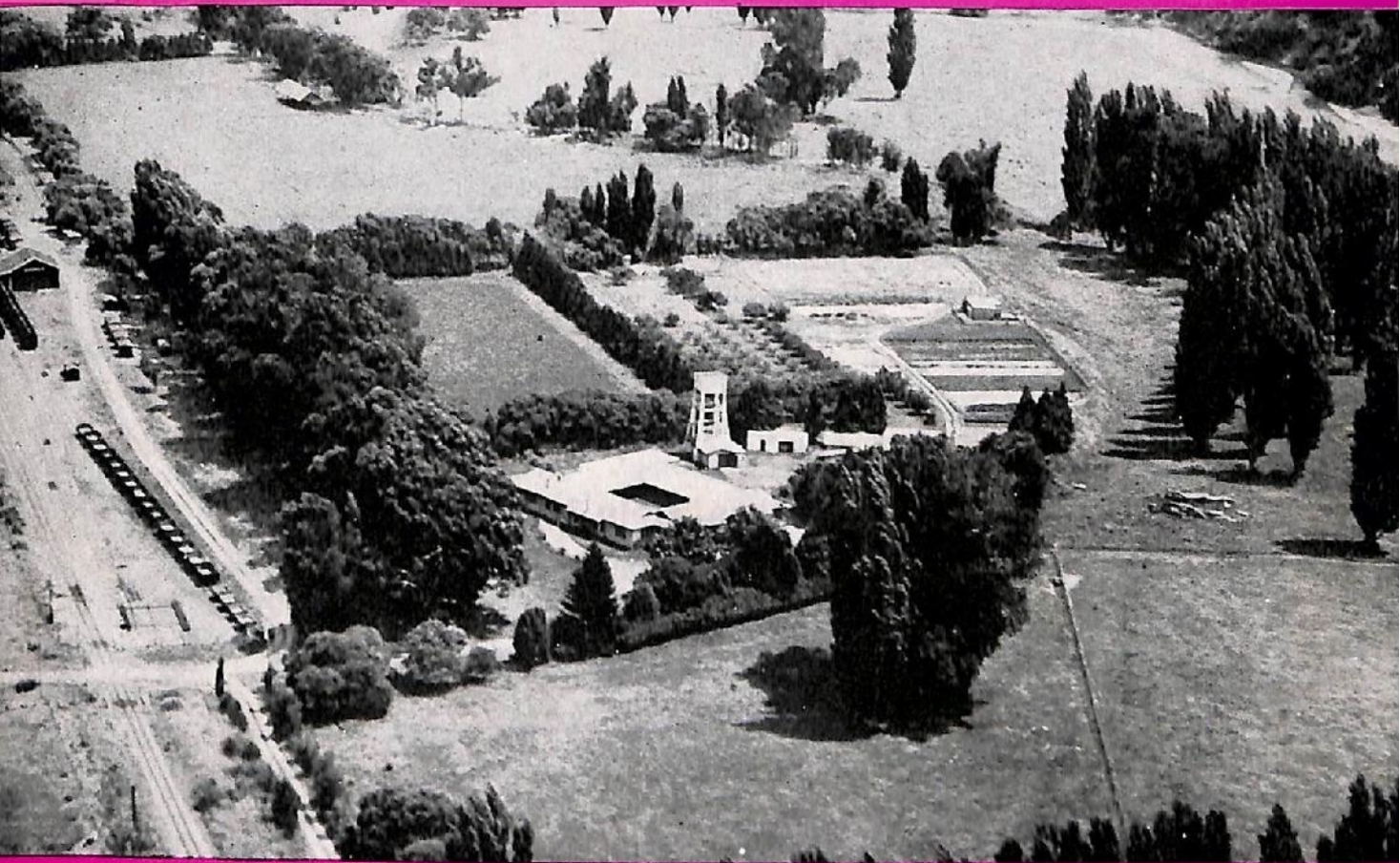


**WE NEED YOUR
HELP**



HAWKE'S BAY CHILDREN'S HOME

ANNUAL APPEAL

These are the Homes we Administer

Family Homes — We have at present two Family Homes, one in Taradale and one in Havelock North. Each is designed to take six children, usually the girls and smaller boys. A third home is to be established at Flaxmere shortly.

France House, Eskdale — This can take up to 20 older boys when the home is fully staffed.

This is how we Administer them

A Board of nine Trustees is responsible for the overall administration of the homes.

The Trustees are assisted by a Ladies' House Committee for each house and these committees handle the day to day problems.

In each Family Home there is a married couple and, just as in an ordinary home, the husband goes out to work each day and the wife does the housework.

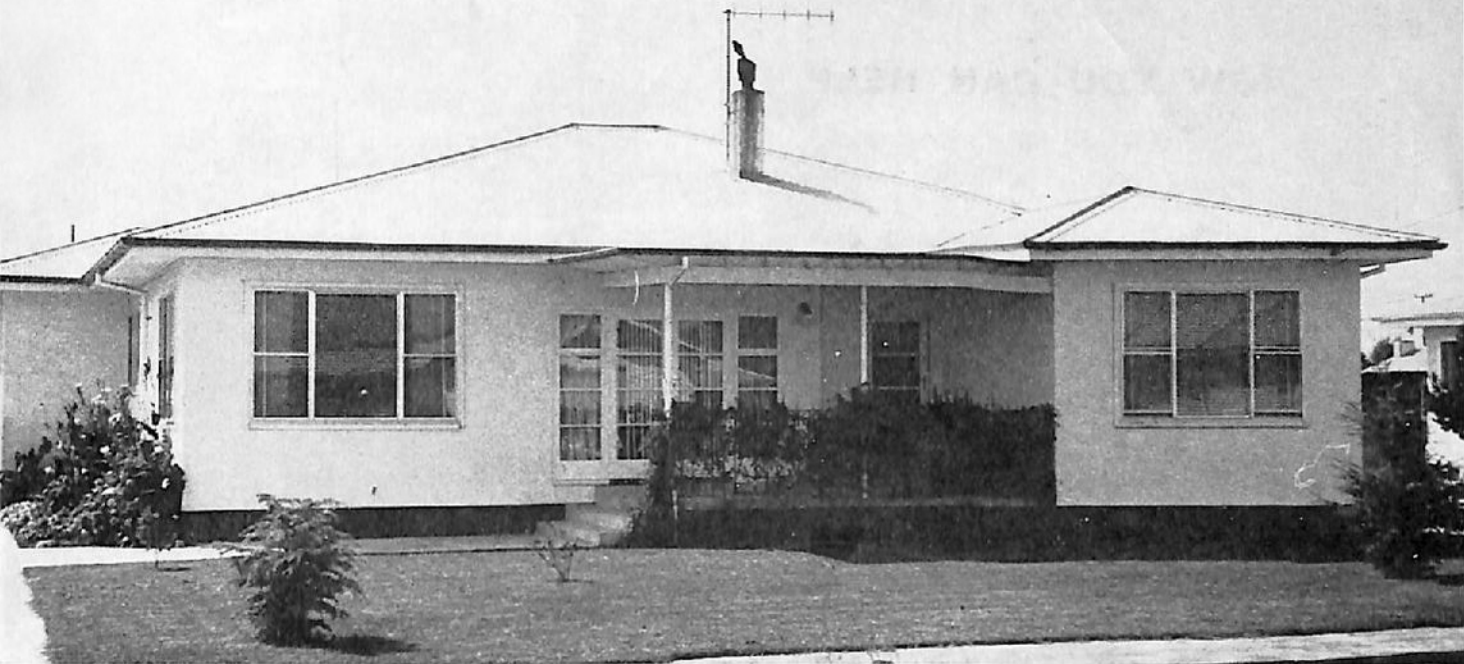
At France House the Master and Matron are assisted by two full-time helpers.

Who are the Children we Help?

Providing there is room we accept any child over 5 years who has no satisfactory home. There are no restrictions as to religion, sex, colour or nationality. We are not, however, a reform home and children with police records are not usually accepted.

Why do we ask the Public to Give Financial Assistance?

We endeavour to collect maintenance from the parents of our children but for various reasons it is seldom possible to recover the full cost. We receive their family benefits and a Government subsidy of \$1.00 per child per week. In addition we have been able to accumulate some investments from the proceeds of legacies received during past years and these produce some income. However, there is always a gap of about \$4000 which must be met from members' subscriptions, donations, street collections and shop days.



One of our Hawke's Bay children's homes

Address

.....

.....

Date.....

H. M. SWINBURN
Secretary-Treasurer
Box 259
Napier

In response to your Annual Appeal,

- (a) I have pleasure in enclosing a donation for \$.....
- (b) You may enter my name in the Register of Subscribers.

Signature.....

HOW YOU CAN HELP

- (a) By sending a donation. These are deductible for Income Tax purposes and gifts are exempt from Gift Duty.
- (b) By becoming an Annual Subscriber. This does not oblige you to pay a definite amount each year but we will send you an annual reminder and you pay what you can. You will also receive a copy of the Annual Report.
- (c) By making provision in your Will for a bequest to the Home.