

# CHESS

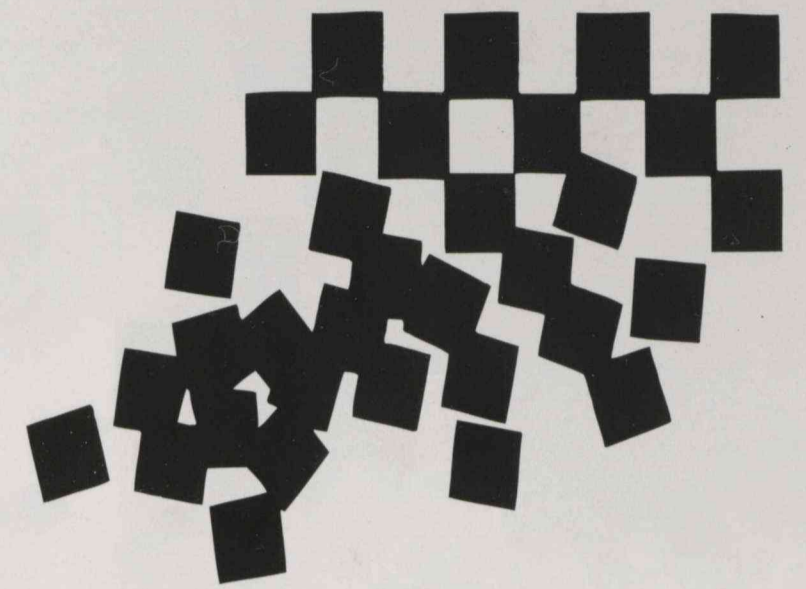
THE MUSICAL

NAPIER OPERATIC SOCIETY

1995



By Arrangement with the Play Bureau (NZ) Ltd and Samuel French, London



# CHESS

## THE MUSICAL

Benny Anderson • Tim Rice • Bjorn Ulveaus

**NAPIER OPERATIC SOCIETY**

Directed by JANE PIERARD

Musical Director DEAN ROBERTS

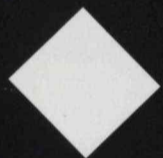
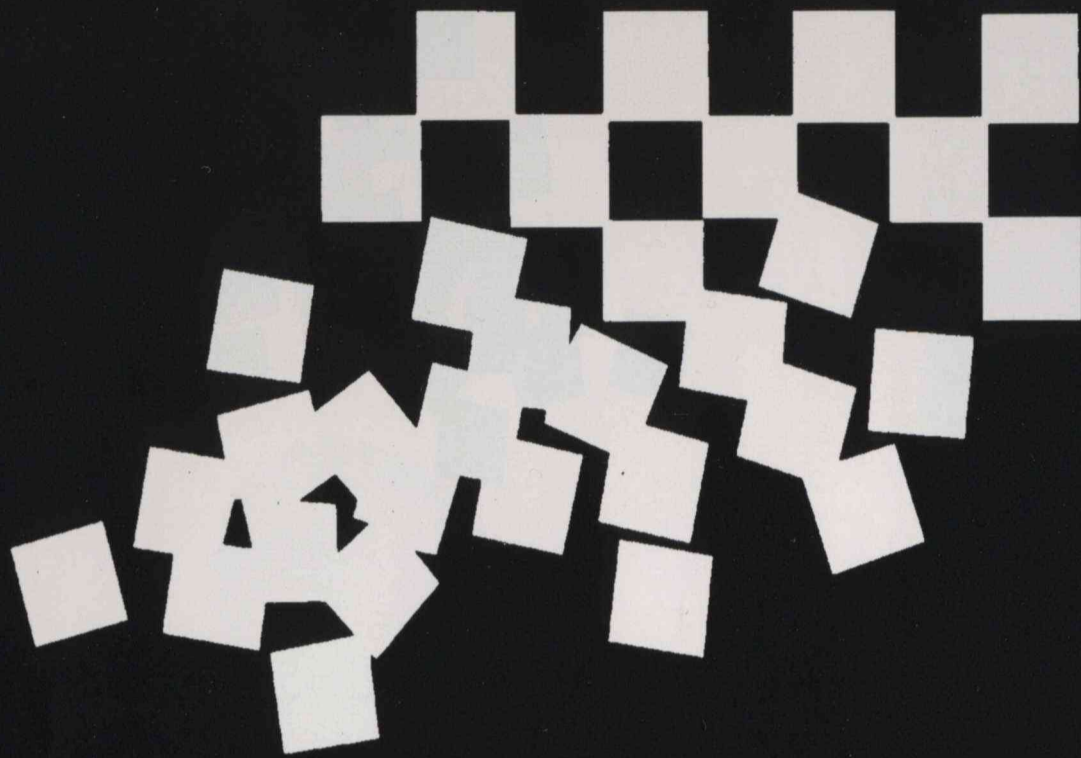
Choreographer BRIAR HORROCKS

**NAPIER MUNICIPAL THEATRE**

15 - 30 SEPTEMBER 1995

---

THE USE OF CAMERAS AND RECORDING DEVICES IS PROHIBITED



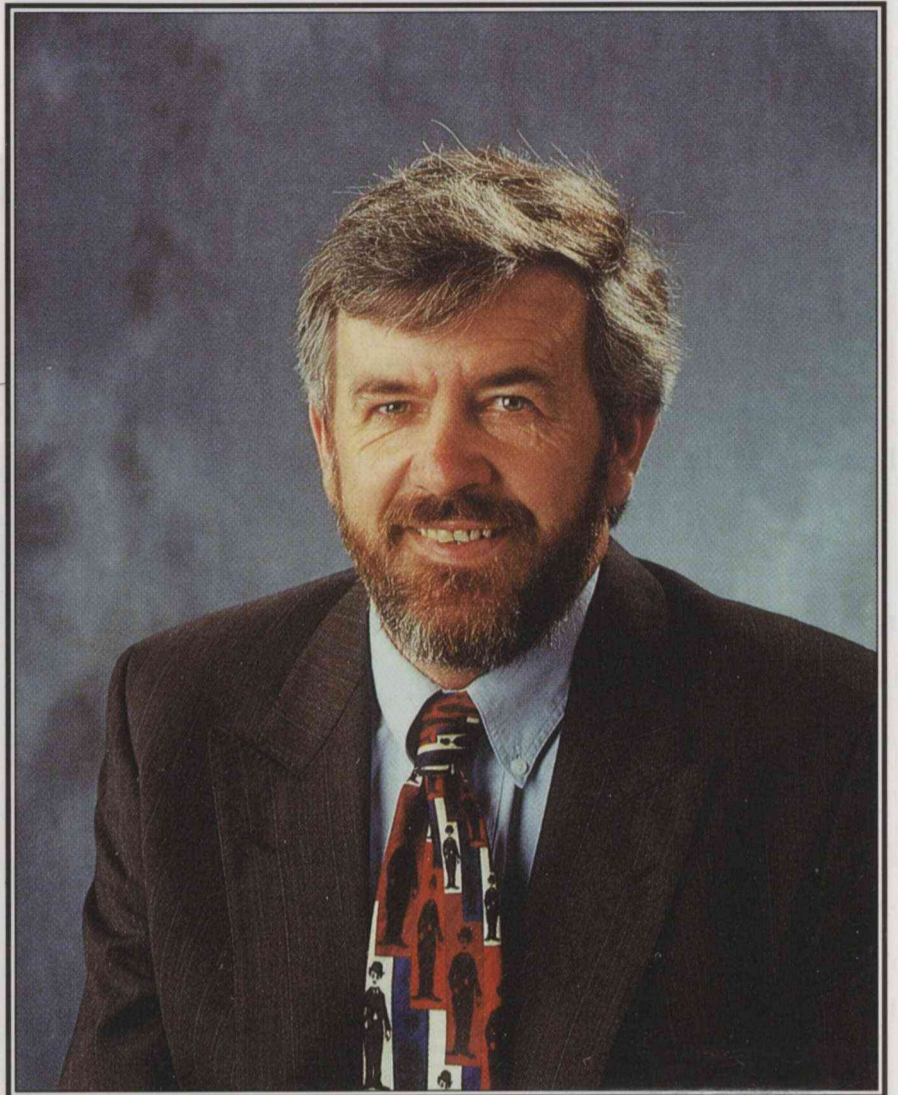
# CHESS

THE MUSICAL

**Supporting Sponsor of the  
Napier Operatic Society**



Bank of New Zealand



### *Presidents Welcome*

I take great pleasure in welcoming you to tonight's performance of "Chess".

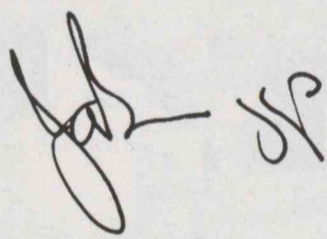
Chess with it's contemporary style and powerful musical score represents the most innovative of modern musicals. It combines with interesting complex characters who face intriguing themes of love, sacrifice and finally betrayal.

Thanks must go to a very talented Jane Pierard, our Director for her creative ability to bring all her ideas to fruition for this production. This is Jane's first production for us but I'm sure it will not be her last.

Thanks also to Briar Horrocks our Choreographer, Dean Roberts our Musical Director, Karyn Briggs for her choral work and to all our cast, crew and production team for the many hours of hard work over the last few months.

Once again a very special thanks to you, our valued patrons for your continued support of Napier Operatic Society productions.

Please sit back and enjoy "Chess The Musical".



John Briggs  
President


*"Chess is not like life...  
Chess is Life  
Just like the theatre."*

FERNANDO ARRABAL



# THE STORY OF CHESS

## — THE MUSICAL

 The World Chess Championship is to take place in Merano, Italy, between the Champion (Frederick Trumper — American) and the Challenger (Anatoly Sergievsky — Russian). The small community has prepared a grand welcome for the World Champion (*Merano*). Freddie, accompanied by his second and lover (Florence Vassy — Hungarian — born Englishwoman) behaves petulantly and aggressively, and at a Press Conference, denounces his opponent, the press and the Soviet. (*Commie Newspapers/Press Conference*)

This press conference is watched by Anatoly and his second, KGB employed, Alexander Molokov. Anatoly realises that every move made by Freddie is a calculated one. (*Anatoly and Molokov/Where I Want to Be*)

Prior to the opening ceremony delegates of both the Russian and American camps feign bon-homie while inwardly plotting to win at any cost. (*US Versus USSR*)

The Arbiter takes charge, while all (diplomats, merchandisers, press etc) struggle to get everything they can out of the occasion. (*Arbiter's Song/Hymn/Merchandiser's Song*)

The first game, overshadowed by dislike and suspicion, ends in a scuffle and Freddie walks out, leaving Florence to try and salvage the situation with Molokov. We learn that Florence left Hungary as a baby, during the Russian invasion. A secret meeting is arranged between Freddie and Anatoly to try and save the situation. (*The Arbiter/A Model of Decorum and Tranquillity/Florence and Molokov*)

Florence confronts Freddie and tells him she will not tolerate his treatment of her any longer. (*1965 Budapest Is Rising/Nobody's Side*)

The secret meeting takes place and Florence realises that she is attracted to Anatoly. (*Mountain Duet*) The game continues while Florence reflects on her life with Freddie and how her story could be so different (*Someone Else's Story*). The game goes badly for Freddie; he blames Florence for his failure and she tells him she is going to leave him. He tries to justify his own actions to himself, but then resigns. (*Florence Quits/Pity The Child*)





"The best move in Chess  
as in life,  
Is always — the one that is made."



SAVIELLY TARTAKOVER



This is not the only drama at the Championships — Anatoly pleads with Florence to help him defect to the West and he gains the freedom he thinks he wants. (*Embassy Lament/Heaven My Heart/Anatoly And The Press/Anthem*)

One year later, at the next World Championship, held in Bangkok, (*One Night In Bangkok*) Anatoly is to defend his title against a new challenger from the Soviet Union. Freddie is also in Bangkok as a TV interviewer, and questions him about his personal life, his politics — never about chess, and finally tells him that arrangements have been made to fly his wife Svetlana to Bangkok for the match. (*One More Opponent/You And I*)

Molokov and his cronies are confident that this time they have a completely reliable player, but to try and ensure a win at any cost, he plots with Walter De Courcey (American CIA and leader of the American delegations) to deceive Florence about her father, said to be still alive in exchange for some political prisoners. (*The Soviet Machine/Interview*)

When Svetlana arrives in Bangkok, the tension between Anatoly and Florence climaxes and he tells her they must separate at least for the duration of the match. He wins the first two games, but the underhand dealing has only just begun. (*The Dead/I Know Him So Well*) Freddie is frustrated by this and his love for Chess triumphs and he tells Anatoly of a flaw in the challengers' game. (*Talking Chess*)

The deciding game begins, with memories of previous championships evoked. (*Endgame*)

Florence sees Anatoly's obsession to win as jeopardising his ability to care for her. At the moment of triumph Anatoly feels a sense of hollow anticlimax, knowing that he must lose Florence and return to the Soviet Union, even though he had understood that if he won the game Florence's father, at least, would be reunited with her. Svetlana realises that any chance of a reconciliation is gone.

Anatoly and Florence reflect that the game of love can be played with as many variations as the game of Chess. Perhaps this game has ended in a stalemate. (*You And I*)

Walter tells Florence that the claim that her father was alive is untrue and she realises that she and Anatoly have been nothing but pawns in the larger political game and she vows never to allow herself to be manipulated again, but to be her own person from here on (*You And I/The Story Of Chess/Finale*)

**CHESS IS POLITICS WRITTEN SMALL**





# THE STORY OF CHESS

## — THE OPENING MOVE



The World Chess Championship clash of 1972 between Bobby Fischer of the United States and Boris Spassky of the Soviet Union, which took place in Reykjavik, Iceland, fascinated me, not because I was a chess enthusiast, but because of the mayhem that went on behind the scenes. Fischer's turbulent behaviour and outrageous gamesmanship, allied to his then unparalleled chess skill, brought this most cerebral of sports to the attention of millions who had hitherto shown no interest whatsoever in it. For the first time chess became an item that attracted considerable media coverage beyond specialist articles and columns. The clash between East and West was of course one of the ingredients that was crucial to the publicity: for many years before the advent of Fischer, chess championships had been of little interest to America and the West in that nearly all of the greatest players came from within Soviet boundaries.

In 1972 Andrew Lloyd Webber and I had only recently completed *Jesus Christ Superstar*. In 1975 we began serious work on *Evita* and it was not until the very end of that decade that I even began to consider the possibility of a musical project that featured the world of chess as its backdrop. By the early eighties I had written a synopsis of a story which involved the defection of a Soviet chess champion to the West immediately after his triumph over an American player.

I drew on much more than the characters and stories of Fischer and Spassky for my tale. Viktor Korchnoi was a real-life chess player who did move to the West which ensured that his world title matches with Anatoly Karpov (a "good" Soviet who stayed at home) were laced with political wrangling, bitterness, vitriolic abuse, situations of near-farce and even a little chess — all invaluable ingredients for a dramatic musical. Fischer himself, a real star, the first serious threat to Soviet chess supremacy for thirty years or more, added enormously to the media's (and my) interest in him by diving into self-imposed exile in 1975, from which he has never emerged. We all miss his maniac aggression off the board and his clinical brilliance on it, but plenty of other characters and incidents have emerged during the past decade to keep anyone contemplating a musical about chess more than happy. Even the recent all-soviet matches between the current world champion Gary Kasparov and Karpov have managed to generate enough acrimony and controversy to satisfy the most jaundiced of observers.

I met Björn Ulvaeus and Benny Andersson in late 1981 and they proved to be the first composers I had met who shared my enthusiasm for chess as a subject for a musical. Their skill in the recording studio meant that there were no second thoughts about making an album of the music before any stage production. The staging only became a certainty after the success of the recordings, both in single ('One Night in Bangkok' and 'I Know Him So Well') and album form. The show opened in London in May 1986 — nearly five years after our initial discussions and fourteen since Fischer and Spassky slugged it out in Iceland. Musicals take time.

TIM RICE  
January 1990


## COMPOSERS



*Benny Andersson*



*Björn Ulvaeus*

 Benny Andersson and Björn Ulvaeus were the writers and producers of the internationally famous rock group ABBA whose recording achievements from 1973 until 1982 earned them a place in the Guinness Book of Records as the world's biggest-selling group of their time. Many of their greatest songs have become standards, including most of their nine British number one singles, of which "Fernando", "Dancing Queen" and "Winner Takes It All" are perhaps the most famous. Their total record sales exceed 225 million records. The other two members of the group were lead singers, Agnetha Faltskog and Anni-Frid Lyngstad. Even during the ABBA years, the idea of writing a stage musical appealed to Björn and Benny, which became a more definite ambition after their meeting with Tim Rice in 1981. Soon after this they began working on CHESS.





*"Even for the masters, a contest will be an exceptional situation, correspondingly, tension runs incomparably high. In addition there are other events which have an incalculable psychological effect."*



GARRY KASPAROV



## **JANE PIERARD**

*DIRECTOR*

Jane has been associated with Napier Operatic for 10 years but this is her first directing role for the Society and she has enjoyed the challenge. After taking leading roles in operatic productions such as "Mack and Mabel", "Nostalgia", "Gershwin", "Nunsense" and "Cabaret" she is relishing being behind the scenes. As well as directing plays for Hawke's Bay theatre groups and secondary school productions, Jane has gathered quite a following for the jazz concerts she performs in during Napier's celebrated Art Deco weekends.

She has been thrilled with her talented cast and applauds their efforts in making the intricate story of "Chess" easier for the audience to understand.



## **DEAN ROBERTS**

*MUSICAL DIRECTOR*

Dean has been involved in theatre in Hawke's Bay since the early 70's. He has worked both on and off stage in more than 25 productions, including "Grease" and "Les Misérables" with Napier Operatic Society.

After spending 10 years in Chicago, Dean arrived back in 1989 with wife, family and a Bachelors Degree in Music Education, and has been teaching music in over 20 schools around the Bay with his company Toots 'n Tunes.

As a performer Dean plays Saxophone with the Hawke's Bay Jazz Club Big Band, sings and entertains for local clubs and societies, and plays with the Hawke's Bay Orchestral Society Symphonic Band. Dean was delighted when approached to be Musical Director for "Chess", with its wonderful music, great songs, and variety of musical styles it provides a great challenge for our local musicians and singers, who really met this challenge.

## **BRIAR HORROCKS**

*CHOREOGRAPHER*

Briar started dancing at the age of 8 and part time teaching at the age of 13. She opened her own school when she was 24 and formed her own dance company when she was 27. Two years later she won the first Choreographic Competition held in New Zealand with a classical ballet which was later performed by the New Zealand Ballet in a Workshop performance.

Her first introduction to showbiz was in 1963 when she sold programmes for "Zip Goes a Million", and since then she has performed in or choreographed 30 shows. The last eight have been for Napier Operatic Society and earlier this year she choreographed our production of "Les Misérables". She considers herself most fortunate to breath the same air as some of the great talents of Hawke's Bay.



# SYNOPSIS OF SCENES AND MUSICAL NUMBERS

**Prologue** *The Story of Chess*

## ACT I

- Scene 1** **A Station in Merano, Italy**  
*Merano*
- Scene 2** **Frederick and Florence's Suite/Conference Room**  
*Commie Newspapers*  
*Press Conference*
- Scene 3** **Molokov's Suite**  
*Anatoly and Molokov*  
*Where I Want to Be*
- Scene 4** **The Arbiter's Chambers**  
*Diplomats*  
*The Arbiter*  
*Hymn*  
*The Merchandisers*
- Scene 5** **The Arena**  
*Chess (Instrumental)*  
*The Arbiter (reprise)*  
*A Model of Decorum and Tranquillity (Quartet)*  
*Florence & Molokov*
- Scene 6** **A Television Studio and Control Room**  
*1956 — Budapest is Rising*  
*Nobody's Side*
- Scene 7** **The Merano Mountain Inn**  
*Mountain Duet*
- Scene 8** **The Arena**  
*Chess (Someone Else's Story)*
- Scene 9** **Frederick and Florence's Suite/The Arbiter's Chambers**  
*Florence Quits*  
*Pity the Child*
- Scene 10** **A Consulate in Merano**  
*Embassy Lament*  
*Heaven Help My Heart*
- Scene 11** **A Station in Merano, Italy**  
*Anatoly and the Press*  
*Anthem*

## ACT II

- Scene 1** **The Streets of Bangkok, Thailand**  
*Golden Bangkok (ballet/instrumental)*  
*One Night in Bangkok*
- Scene 2** **Anatoly and Florence's Suite**  
*One More Opponent*  
*You and I*
- Scene 3** **Molokov's Suite**  
*The Soviet Machine*
- Scene 4** **A Television Studio**  
*Interview*
- Scene 5** **The foyer of the Oriental Hotel, Bangkok**  
*The Deal*  
*I Know Him So Well*
- Scene 6** **A Buddhist Temple**  
*Talking Chess*
- Scene 7** **The Arena**  
*Endgame*
- Scene 8** **The Arena/Airport**  
*You and I (reprise)*  
*Walter and Florence*
- Epilogue** *Epilogue*

*The music for Chess is available on hire from Samuel French Ltd*

Conductor . . . . . Dean Roberts  
Violin 1 . . . . . Norma Smith  
Violin 1 . . . . . Helen Dunlop  
Violin 2 . . . . . Joanne Hare  
Violin 2 . . . . . Anne Willink  
Cello 1 . . . . . Steven Gibbs

Cello 2 . . . . . Robin Ward  
Flute/Piccolo . . . . . Mary McHattie  
Flute . . . . . Sally Davies  
Clarinet . . . . . Douwe Wierdsma  
Clarinet/Bass Clarinet . . . . . Natalie De Frere  
Clarinet/Baritone Saxophone . . . . . Ray Isaacs

## THE ORCHESTRA

Oboe/Cor Anglais . . . . . Julian Pook  
Trumpet 1 . . . . . Roy Wardle  
Trumpet 2 . . . . . Murray Schultze  
Trumpet 3 . . . . . Phillip Geenty  
Trombone 1 . . . . . Keith Robinson  
Trombone 2 . . . . . Jennifer Heyward  
Guitar . . . . . Andrew Klinkhamer

Bass Guitar . . . . . David Ferguson  
Drums . . . . . Malcolm Thorpe  
Percussion . . . . . David Burch  
Keyboard 1 . . . . . Sally Rutgers  
Keyboard 2 . . . . . Colleen Edgecombe  
Keyboard 3 . . . . . Catherine Anyan

# PRINCIPALS



## GEOFF TURKINGTON

FREDERICK TRUMPER

"Chess" sees Geoff return to the stage after some years. Originally from Hawke's Bay, he has been residing in Palmerston North for the past ten years and commutes to and fro to do this show. For the last seven years he has been concentrating his efforts into directing and choreography, staging the shows "Godspell", "Grease", "Cabaret", "Chicago", "Slice of Saturday Night". He was the instigator and director of the Save the Regent Theatre Show, "Poor Little Ritz Girl" and the mainforce behind the Renaissance Annual Major Fashion event in the Manawatu. The opportunity to return to the stage and to work with such refreshing people as Jane Pierard and the Napier Operatic Society has been very humbling and well worth the travelling.

## ROBYN O'HAGAN

FLORENCE VASSY

Robyn has been involved in a variety of theatre in Wellington including "West Side Story", "Joseph and the Amazing Technicolour Dreamcoat" and "Chicago". Since moving to Napier to take up a position as the Physical Education and Social Studies teacher at Taradale High School she has gained lead roles in "Anything Goes" and "Hello Dolly". She has also had singing lessons from Margaret Medlyn. Her last production for Napier Operatic was "Les Misérables".



## MARK LUSCOMBE

ANATOLY

Born and bred in Wairoa, Mark's first role (aged 12) as Jesus in a school production of "Godspell" quashed all theatrical desires until Napier Frivs' "Jukebox Generation" in 1990. Performing thereafter with two fellow cast members in small cafe bands. "Chess" is Marks' debut with Napier Operatic. Thinks he's talented. What the stars have said about him:



"Seeing this guy is believing"

"I hate him he's so talented"

"He's handier than your average kitchen appliance"

"He will come to a terrible end"

"Does for Chess what Julie Andrews did to the hills"

"Arf, Arf"

"He's not mine"

Ray Charles

Madonna

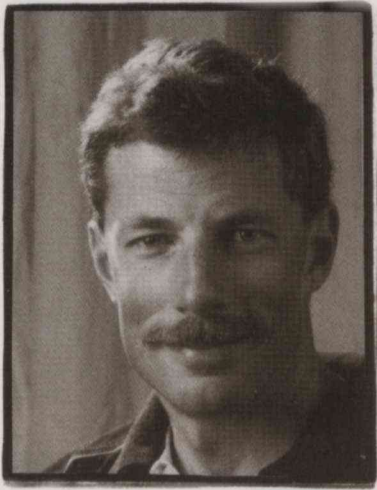
Alison Holst

Madame Zelda

Jane Pierard

Lassie

His mother



## **JOHN MARSHALL**

*WALTER DE COURCEY*

John comes from a background of choral singing, having sung with the Auckland University Singers and a number of other choral groups. "Chess" is the second Napier Operatic Society production John has been part of. Earlier this year he played Feiully in "Les Misérables". Prior to moving to Napier John performed in "HMS Pinafore", "The Mikado" and co-produced a couple of school productions.

## **SAM BROWNE**

*ALEXANDER MOLOKOV*

Sam's first introduction to the stage was at the early age of 9 and has had a love of music and choral singing all his life. He has been active in Hawke's Bay theatre for several years. He has recently played roles for Hastings Operatic Society in the "Merry Widow", "Pink Champagne", "Mikado" and "Pirates of Penzance". He has also sung in many other shows, including Hawke's Bay Opera productions. He enjoys his work as a Trustee of Hawke's Bay Opera. This is Sam's second production for Napier Operatic Society. His first being "Les Misérables" and has enjoyed immensely the challenge of playing the role of Molokov, in "Chess".



## **ROSS CORBETT**

*ARBITER*

Fifteen years ago Ross first experienced the 'Bay' and the 'Boards' through "Jesus Christ Super Star". "Les Misérables" was part of his reintroduction to both. In between times have included various productions, folk rock groups, classical choir and solo work mainly in the Manawatu. Ross has enjoyed "Chess" especially the challenge of combining dance with song and has appreciated the support of Taradale High School, his young family, and understanding wife.

## **KAREN WRIGHT**

*SVETLANA SERGIEVSKY*

After a 12 year absence from our stage, Karen returns to Napier Operatic Society. Shows she has performed for us include "Jesus Christ Superstar", "Joseph", "Oliver", and "My Fair Lady" for Hastings Operatic and numerous variety shows for Frivs and Hastings Musical Comedy. Recently Karen has been doing vocal work around the Bay and enjoys singing at weddings, private functions and clubs. She is enjoying playing the part of Svetlana in "Chess".





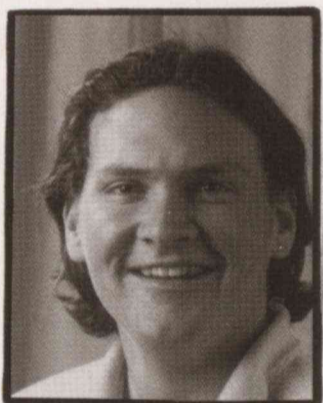
Daniel Betty



Emily Burch



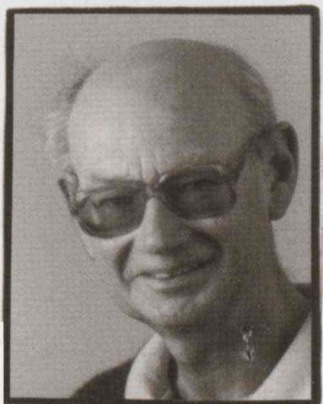
Steven Clarke



Christopher Crowe



Callum Dodunski



Tony Fullerton-Smith

**DANIEL BETTY**

Daniel hasn't been acting or singing long but it has now become a major part of his life. Daniel is currently a sixth form student at Taradale High School. He has appeared in "Fiddler on the Roof", a Taradale High School production, and "Hello Dolly" as Barnaby for the Frivs. This is his first appearance for Napier Operatic Society and hopefully many more to come.

**EMILY BURCH**

Emily began her dancing training at the age of four and is trained in ballet and modern jazz. Emily has performed with the Royal New Zealand Ballet and in many other shows around the district. Her first performance with the Operatic was in 1992 in "Joseph". She thoroughly enjoyed the experience and decided to get more involved with the Society. Emily is in the Fourth Form at Taradale High and is enjoying being involved with "Chess" and hopes that you will enjoy the experience as much as she has.

**STEVEN CLARKE**

"Chess" is Stevens first appearance with the Napier Operatic Society. As a student of Napier Boys High he has been involved with various school musicals such as "Carrots" and "Dracular Spectacular" and has always enjoyed the combination of dancing and singing. Stevens other interests include golf and rock climbing and he enjoys the challenge of both recreational pastimes.

**CHRISTOPHER CROWE**

This is Chris' first show for Napier Operatic Society and the second time he has been on stage for the production of "Chess". He has been involved in theatre for the past three years in Palmerston North. During that time he has been involved in numerous shows including "Chess", "Fiddler on the Roof", "The Boyfriend", "Dames at Sea" and "Festive Follies" with Dance Enchore with Productions of Australia. His last show was "Les Misérables" where he played the role of Enjolras. Chris has loved his stay in the Bay and plans to return in the future.

**CALLUM DODUNSKI**

Callum has been singing for nine years and has recently gained a Diploma of Performing Arts from the Hawke's Bay Polytechnic. In 1993 he was a finalist in the Daily Telegraph sponsored aria. He has sung in "La Boheme", "Pearl Fisher", "Carmen", "The Marriage of Figaro" in which he was understudy for Antonio, "West Side Story" understudy for Tony and is currently understudy for Anatoly in "Chess".

**TONY FULLERTON-SMITH**

Tony has been making music in some form or other most of his life both in instrumental and choral work. His first of several appearances in the Music Hall productions began in 1980

and were followed by roles in "Oliver", "Jerome Kern", "Me and My Girl" and the very successful "Canterbury Tales" last year.

**JULIANNE BROGDEN**

A vivacious lively 6th former from Hastings Girls High School who has danced classical ballet for 10 years, with major leads in recitals including "Aladdin". She has also attended many dance summer schools and seminars and danced in the 1994 "Macbeth" production. For the last two years she has been selected for the National Aerobics Finals. Aerobics, dance and all music are Juliannes favourite interests. Julianne has really enjoyed the vibrancy of "Chess".

**DOREEN CARTER**

Doreen has recently moved to Napier after living in Western Australia for the past four years where she was involved in solo and choral singing. She also did some amateur dramatics. This is the first show she has been in and is really enjoying the experience of working with Napier Operatic Society in the production of "Chess".

**DOUG COOK**

Dougs first show was "Camelot" way back in 1969 and since then he has appeared in many musicals here in Hawke's Bay, Auckland and Wellington. Recently returned to Napier, Doug is thrilled to be part of the "Chess" team, his first show with Napier Operatic since "My Fair Lady" in 1974.

**ANITA DAVIES**

Anita began her association and love of music at a very early age. She has taken part in many Hawke's Bay productions and has also played cello with the New Zealand Youth Orchestra. Her last show for Napier Operatic Society was "Les Misérables" and is presently Secretary for the Society Social Club. She is thrilled to be part of "Chess".

**DONNA EDDY**

Donna is a relative newcomer to the Napier scene. She has performed in the Frivs Kitkat club and previously performed in many musicals at Katikati College, singing, dancing and playing the viola, piano and percussion. Other than that she is a registered nurse at the Hastings Hospital who has been able to participate in this show thanks to the aid of her work colleagues.

**JAN GARE**

Jan's involvement with the theatre covers dancing in "Mack & Mabel", "Me and My Girl", "An Evening with Gershwin", "Jerome Kern", "Joseph" and "West Side Story". Singing roles in "Me and My Girl", "Anything Goes" and dabbling in the operatic ride with "Marriage of Figaro" and drama in the recent Rep production of "Out of Order". She is enjoying working with the Napier Operatic Society team again.



Julianne Brogden



Doreen Carter



Doug Cook



Anita Davies



Donna Eddy



Jan Gare



Ian Gearey



Kylie Jensen



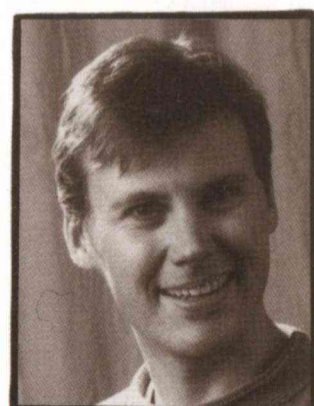
Claire Keys



Julie Marr



Jeannette MacKenzie



Maurice Reid

### IAN GEAREY

Ian's first introduction to theatre was in his early teens in the UK playing Pantomime. His involvement in NZ has been firstly with the Frivs and in more recent years with the Napier Operatic performing in "Jerome Kern", Music Hall, "Joseph". He is thrilled to be in the cast of "Chess".

### KYLIE JENSEN

Kylie started taking dance lessons at three years old, and has since studied modern, character and classical ballet. As a child she danced with the Royal New Zealand Ballet in its production of "Copella". She has studied singing for three years and been involved in numerous school productions and was also in the childrens chorus in Napier Operatics production of "Joseph". She is presently in the Seventh Form at Tamatea High School.

### CLAIRE KEYS

Claire has been surrounded by theatre since she was young so it was no surprise when she ventured onto the stage. While at Havelock North High School she played Maria in "West Side Story". Her first out of school performance was in "La Boheme". She has been involved in Hastings Operatic performances of "Pirates of Penzance" and just recently the "Gondoliers". For the past two years she has been in Dunedin studying at the New Zealand College of Performing Arts.

### JULIE MARR (O'MALLEY)

Julie is thrilled to be back on stage after a break of 9 years and is now a mother of two little girls who also love to sing and dance. Previous Napier Operatic Society experience of yesteryears have been "Oklahoma", "Chicago", and various Music Halls, with the great debut as the dumb broad Lily in "Annie". Great to be meeting new people.

### JEANETTE MACKENZIE

Coming from a musical family, Jeanette's first appearance on stage was at the age of 5. She's been seen in many local productions including "Godspell", "Jesus Christ Superstar", "The Great Waltz" and numerous reviews for Hastings Musical Comedy. More recently she has directed two reviews for Hastings Musical Comedy.

### MAURICE REID

Maurice has played the trumpet for many years and having played in a number of shows and opera orchestras, he decided it was time to try something new so he auditioned for "Chess". He's enjoying the challenge of the complex harmonies in the chorus and the dancing, which is a completely new experience.

### JACQUELINE HATCHARD

Jacqueline has been involved in school presentations, choral and orchestral groups since she was seven and this is her first musical show experience since leaving school 4 years ago. She has thoroughly enjoyed doing "Chess" and feels privileged to be a member of a cast of such talented individuals.

### SUZANNE JONES

A Primary School Teacher, Suzanne started ballet as a four year old, appearing in many dance recitals, school productions and as a local extra with the Royal New Zealand Ballet. Her first show with Napier Operatic was in 1981 in "Hans Christian Andersen". Since then she has been involved with many productions including "Mack & Mabel", "An Evening with Gershwin" and "West Side Story", plus numerous Music Halls.

### MICHAEL KUPENGA

It's great to be involved in such a large production, dancing's a relatively new area for me, I am currently studying for a Diploma in Performing Arts and Drama at the Hawke's Bay Polytechnic. I'd like to thank the co-ordinator for allowing me to be part of this production.

### CARLYLE MCINTOSH

Carlyle is a student at Sacred Heart College and is sitting University Entrance Exams this year. The last three years she has attended the National Youth Drama School but has never been involved in a show before. She is rapt at being accepted into the "Chess" cast and hopes everyone in the audience enjoys the experience of being involved in our game of Chess.

### BRIDGET PERKINS

Bridget has performed in shows for Invercargill Operatic society for over 10 years. She's had parts in shows such as "Grease" and "Fiddler on the Roof" and chorus in others. She comes from a very musical family — her mother is presently Musical Director for Invercargill's production of "Chess". Bridget was delighted to be chosen for the cast in "Chess" and hopes this will be the beginning of a long association with the Napier Operatic Society.

### ROXANNE REID

Roxanne has been dancing for as long as she can remember but has decided to take up the challenge of singing in a show for the first time in "Chess". Roxanne has performed in many Napier Operatic shows including "Grease", "Jerome Kern", "West Side Story", "Cabaret" and "A Slice of Saturday Night".



Jacqueline Hatchard



Suzanne Jones



Michael Kupenga



Carlyle McIntosh



Bridget Perkins



Roxanne Reid

**MARC COLLIER***Stage Director*

Having a strong passion for theatre, which he is sure is handed down genetically, Marc has many years of experience backstage. After spending a year with Auckland Opera as Assistant Stage Manager he returned to Napier as Stage Manager for "Chess". His big commitment to theatre is to encourage and train new and younger members into more challenging roles, and this is shown by his confidence in his young production team.

**PAUL COLLIER***Lighting*

An Executive Member of the Society, Paul started with Napier Operatic Society in the mid seventies. Since then he has gained valuable experience backstage — special effects, set construction, stage management. In the last few years Paul has specialised in the lighting field — designing and operating numerous shows for this society as well as other Hawke's Bay productions.

**KARYN BRIGGS***Assistant Choral Director*

Napier born and educated Karyn has been totally immersed in music and theatre all her life. She is an Executive Member of the Hawke's Bay Performing Arts Society and has been part of numerous theatrical productions, as actress, choral director or musical director. Currently Head of Department Music at Taradale High School her most recent involvement was as Musical Director for "Fiddler on the Roof". Karyn is thrilled to find she's working with old friends from "Superstar" days as well as new and talented people including a number of Taradale High School students. It is a pleasure and a privilege to work, once again, with Briar Horrocks and Jane Pierard.

**HARLEY JONES***Fly Floor*

A keen sportsman, Harley's first show with Napier Operatic was "Jesus Christ Super Star" in 1980, although as a youngster he had previously been around 'assisting' crews for a number of years. Harley has had the privilege of working and gaining valuable experience with touring companies when they have visited the Bay.

**LEIGH JONES***Stage Manager*

Theatre, especially music and dance has always been part of Leighs life. Her association with Napier Operatic began in 1963 as a member of the ballet for "Where's Charley?". Since, she has been involved with many productions from tea lady to choreographer and in recent years, stage management, the biggest challenging being "Les Misérables" earlier this year.

**RAYMOND GEMPTON***Hairdresser*

Raymond has been involved with Napier Operatic Society for a short time. He danced for many years but now prefers to do what he does best, the job of Hair

Design. "Cabaret" was his first challenge and earlier this year he was hairdresser for "Les Misérables".

**CHRIS SHIELDS***Wardrobe*

Chris has helped with Wardrobe for most Napier Operatic Society Shows since she accidentally became involved nine years ago. During her last show, "Les Misérables", she was assistant to Wardrobe Mistress, Sue Page. This is her first time as Wardrobe Mistress and she gratefully acknowledges the help and guidance from her mentors.

**SONYA AIFAI***Properties Mistress*

Sonya was introduced to Napier Operatic by joining the "Oliver" props team in 1988. Since then Sonya has been Props Manager for "Me and My Girl", "Joseph", "West Side Story", "Canterbury Tales", "Music Hall 94", "Slice of Saturday Night" and now "Chess". Sonya has performed in Music Halls, "Canterbury Tales" and "Nunsense". Sonya joined the Executive Committee this year and has undertaken the job of Production Manager for "Into the Woods" in 1996.

**SALLY RUTGERS***Rehearsal Pianist*

Sally's involvement with Napier Operatic Society began in 1979 with "Grease" followed by "Oklahoma", "Annie" and "Chicago" with singing and dancing roles. Her career days were spent at Bay City Radio where musical programmes were here forté. Her young family has since kept her busy (apart) from piano accompanying work in a variety of areas. Sally has enjoyed her return to piano playing for "Chess" auditions, rehearsals and orchestra and looks forward to further involvement.

**PIERRE VAN DER ZWET***Mechanist*

Pierre commenced his involvement with the Society in 1985 during "Chicago" and has been on stage and backstage in many productions since then. His knowledge gained over the years is shown by his ability to work in any backstage roll. He is now looking forward to the challenge of new and more responsible tasks.

**JILL WILLIAMS***Lighting Manager*

Jill has been an active member of the Napier Operatic Society for 19 years both on stage and backstage. Her first show calling lighting was Hans Christian Andersen in 1981 and she has called many show since. It's as challenging as being on stage.

**DEBBIE WILLIAMS***Makeup*

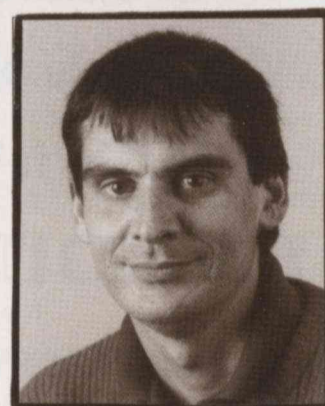
Debbie has been involved with make-up for both Napier and Hastings Operatic, and several school productions. She headed the makeup teams for Napier's last production "Slice of Saturday Night" and looks forward to the challenge of a 'big' show like "Chess".



Marc Collier



Chris Shields



Paul Collier



Sonya Aifai



Karyn Briggs



Sally Rutgers



Harley Jones



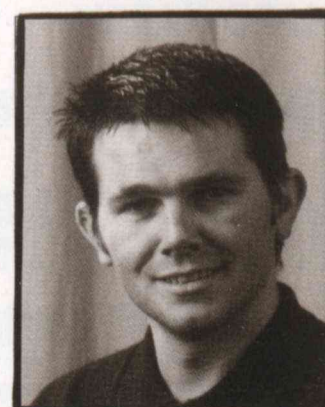
Pierre Van der Zwet



Leigh Jones



Jill Williams

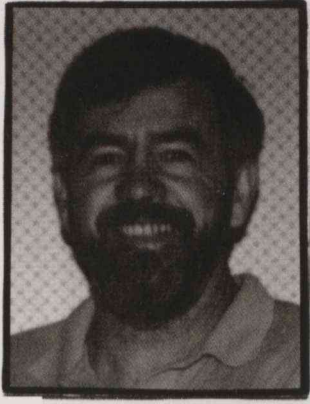


Raymond Gempton



Debbie Williams





John Briggs



Dale Reid

### **JOHN BRIGGS**

*Production Manager*

John has been involved with the Society for many years and has been involved in many areas including Stage Manager, Set Construction, Set Design, Chef, Production Manager and Front of House Manager. Recently he undertook the supervision of the reconstruction of the Tabard Theatre. He is presently the President of the Society.

### **DALE REID**

*Production Secretary*

Dale has been involved with the Napier Operatic Society in various capacities since 1968, including Properties Mistress, Stage Manager, Production Secretary and a few small parts on stage. She has also enjoyed working Front of House as Hostess on many occasions and being a member of the Society Publicity and Profile Committee. Dale is presently Manager of the Society Booking Office at the Municipal Theatre.

## **PRODUCTION PERSONNEL**

*Assistant Stage Director*

Andrew Browne

*Assistant Stage Manager*

Philippa Jones

*Booking Office*

Dale Reid, Ian Reid, Denise Jones

*Fly Crew*

Clive Buttery, Scott Buttery, Patteson Aifai, Eoin McKinnon, Allan Howes, Malcolm Kenah, Kendal Browne, Daniel Hurley, Donald Hurley, Adrian Lynds.

*Front of House*

Neill Page and friends of the Society.

*Lighting Team*

Brent Smith, Anne Drager, Rachel Hosken

*Makeup Team*

Julie Mallard, Lynda Gordon, Marie Ewens, Margot Bell-Connell, Kaye Absolom, Lisa Morse, Sarah Williams and helpers.

*Properties Team*

Helen Hare, Graeme Hare, Amanda Johnston, Gail Jones, Christine Kenah, Darryl Mitchell, Trish Robinson, Mariot Scott, Karyn Wills.

*Programme*

John Briggs

*Programme Photos*

Clive Ralph

*Set Design*

Marc Collier

*Sound*

Oceania Audio Ltd and Syd Jago

*Stage Crew*

Andrew Browne, Craig van der Zwet, Blair Burtenshaw, Paul Kenah, Jamie Beale, Alan Holt, Kirsten Barrie, Anita Kelsey, Rick Behague, Ray Sloan, Shane Miringaorangi, John Bloor, Nigel Hill, Tony Unsworth.

*Stage Effects*

Rick Behague, Paul Kenah.

*Suppers and Refreshments*

Christine Cheyne, Donna O'Shaughnessy

*Wardrobe Team*

Sue Page, Saima Pritchard, Karen Hawkins, Maria Paterson, Lois Reefman, Philippa Drayton, Christine Jackson, Christine Chard, Jean Allen, Leigh Thompson, Melanie Bissell, Linda Forrest and helpers of the Society.

*Winch Operators*

Blair Burtenshaw, Craig Van der Zwet

*Publicity Team*

John Briggs, Barbara Brown, Barrie Browne, Anne Corney, Darryl Mitchell, Sharron Pardoe, Dale Reid, John Williams.

*Construction Crew*

John Briggs, Marc Collier, Cliff Allen, Troy Briggs, Colin Pritchard, Allen Holt, Pierre van der Zwet, Jamie Beale, Adrian Lynds, Brent Smith, Clive Buttery, Donald Hurley, Daniel Hurley, Denys Meek, Brett Collier.



## Officers of the Society

<i>Patron</i>	Robert Wright
<i>President</i>	John Briggs
<i>Vice President</i>	Neill Page
<i>Immediate Past President</i>	Peter Shepherd
<i>Chairman</i>	Bill Dalton
<i>Secretary</i>	Ian Reid
<i>Treasurer</i>	Ian Collins

*Honorary Solicitor* John Matthews

*Honorary Photographer* James White

*Committee* Sonya Aifai, Tessa-May Brown, Paul Collier, Alan Jones, Darryl Mitchell, Brian Nathan, Bill Shirras, Lesley Reid, Tony Reid, Stuart Webster

*Life Members* Bob Wright, Dawn Unsworth, Robert Houston, Alan Jones, John Collier, Donald Hurley, Fred Twyford, Barrie Browne, Lyndsay Browne, Roz van de Ven, Les Robertson, Cliff Allen, Colin Pritchard, Brian Nathan, Dennis Kelliher, Ian Reid, Peter Shepherd, Gwyn Ace

## ACKNOWLEDGEMENTS

- *Old Flame Restaurant • Multi Clean • Rum Jungle Road • David Hosegood*
- *Anita Davies • Porritt School • Campbell Scott • Manawatu Theatre Society*
- *New Plymouth Operatic Society • Port Ahuriri School • S W Jones Ltd • Tauranga Operatic*
- *North Shore Operatic • Joe Atkin Signs • Hayter and Flemming Signs • McMillin Craig Limited*
- *Gwyn Ace • NZ Chess Supplies • Wayne Ferguson • Conroy Removals*
- *Bank of New Zealand • Electrotech • John Holmes • Linda Davies*
- *Raphaels • Mike Hughes • Karine Morozova • Rothmans*
- *Katry Rain • Neighbours of the Tabard*

*Special Thanks to: Elizabeth Curtis*

*and Adriane McDowell*





---

*FURNITURE REMOVALS  
THROUGHOUT NEW ZEALAND  
AND WORLD-WIDE*

---

Full Packing and Storage Service

Branches at Auckland  
Wellington and Christchurch

**HAWKE'S BAY OWNED  
& OPERATED**

**CONROY REMOVALS**

PHONE 843 2376 — FAX 843 5931

LIPTON PLACE, ONEKAWA. P.O. BOX 5079 GREENMEADOWS

**LEIGHTON SMITH DOESN'T KNOW  
WHAT HE'S TALKING ABOUT.**



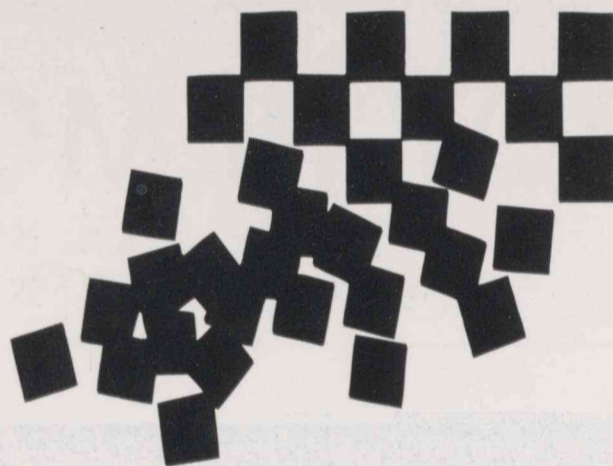
Fresh, lively, interesting and informative. Leighton's show covers a diverse and unpredictable range of topics that are so up to the minute you never know what's going to be covered next. As well as that, there's local weather, cancellations and community noticeboard from Ross Holden. Tune in to Leighton on Newstalk ZB Hawke's Bay, 1278 AM at 8.30am weekdays. Because only one station gets you this close to who knows what.



# *Electrotech*

*Electrical & Electronic Specialists*

*Proud sponsors of Napier Operatic  
production of*



## **CHESS** **THE MUSICAL**

- *Industrial Electrical Controls* • *Commercial Wiring*
- *Switchboard Manufacture* • *Computer Cable Networks*
- *Instrumentation* • *Electrical Servicing* • *Marine Electronics*
- *PLC Systems* • *Security Systems* • *Factory Automation*

**47 Kennedy Road, NAPIER**

**Phone (06) 835 2260**