

桂林

GUILIN

INFORMATION BOOKLET

HASTINGS SISTER CITY





HASTINGS DISTRICT COUNCIL

The Hastings-Guilin 'sister-city' relationship was the first-ever in a

New Zealand-China context, and it is now 12 years since the protocol was signed in 1981.

The first half of the twelve-year period saw Hastings-Guilin ties form mainly through Local Government political contact, and the late Dr Don McKenzie launch a Hawke's Bay-based horticultural study and experience scheme. The last six years has seen the relationship blossom into a wider range of educational, cultural and social contact.

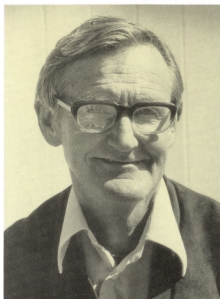
The formation of the Guilin Forum in 1992 will see a three-year strategic plan put in place, with further contact and exchange intended. A major emphasis of the 1992-95 period will be an effort to put economic substance into the relationship, and a first Chamber of Commerce trade and economic study group will go to Guilin/South China in 1993.

New Zealand's future, and that of the Hawke's Bay region, significantly lies with Pacific Rim countries, and especially its Asian neighbours. Dreaming must become doing, and the Guilin-Hastings bond offers a genuine doorway of opportunity. It is up to us to seize the day for the best possible reasons.

Jeremy Dwyer
MAYOR

THE FRIENDSHIP FOUNDER

The late Dr DW McKenzie, or "Dr Don" as he was known to many, played a key role in suggesting, founding and developing the Hastings - Guilin connection. A fruit research scientist with the DSIR in Goddards Lane, Havelock North, Dr McKenzie visited the Guilin Municipality in 1977 developing professional contact with the Guangxi Botanical Research Institute. His research, knowledge and methods saw him hailed as a leader by New Zealand, the pipfruit industry and, by international colleagues. He first proposed a Hastings-Guilin link in 1978, and, both before and after



the sister-city protocol was signed in 1981 and his retirement, was generous, energetic and innovative in developing a range of contacts. He also founded the re-establishment of the Hawke's Bay Branch, New Zealand China Friendship Society in April 1985 and was its President, and launched a horticultural technician placement scheme. Following his tragic death in July 1988, many glowing personal tributes in

the Guilin newspaper, Ribao, described him as "the friendship messenger". This indeed he was, and the Hastings-Guilin bond is a living testimony to his vision and work.



HOW HASTINGS AND GUILIN BECAME SISTER-CITIES

Following a visit to the Guilin Municipality (The People's Republic of China) in 1977, the late Dr D W McKenzie made a suggestion to the Hastings City Council that they should pursue a sister-city relationship with Guilin. He believed common interests including horticultural, and rural-urban characteristics, provided potentially strong mutual interests. The City Council agreed and approached the Chinese Embassy in Wellington in October 1978. In July 1980 Liang Shan, Mayor of Guilin, invited a Hastings

delegation to Guilin to discuss the proposal. Mayor J J O'Connor led a five-strong party to Guilin in September 1980, and Mayor Liang Shan led a reciprocal delegation to Hastings in March 1981. The Hastings-Guilin sister-city protocol was signed on 4 March 1981 by founding Mayors J J O'Connor and Liang Shan.



PROGRESS IN SISTER-CITY DEVELOPMENTS

Following the signing of the friendly cities protocol in 1981, initial contact between Hastings and Guilin developed through Goodwill Delegations at Mayor/Council level, and in the sharing of information and experience in the fields of Local Government Management, Agriculture and Industry.

Since 1985 the relationship has cautiously but progressively broadened, and its scope now includes:

- regular Goodwill Delegation exchanges (eleven since 1980)
- a horticultural technician scheme to Hastings (eleven placements since 1986)
- an English-language teacher scheme to Guilin (two placements totalling 4 years' service since 1987)

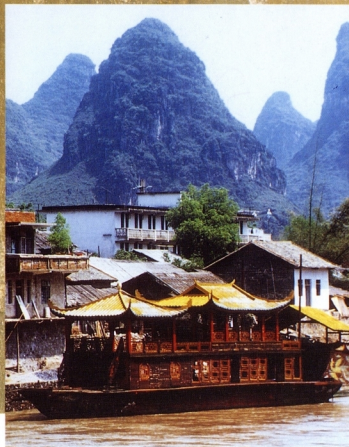
- other inter-school/education links
- cultural exhibitions to Guilin
- local promotion of sister-city knowledge and awareness
- tourist visits to Guilin
- facilitation of commercial and trade information contacts
- information and experience exchange in Local Government, Agriculture, Horticulture, Industry, Tourism and Education

A new dimension in exchange schemes occurred in 1992 with the arrival of a non-horticultural placement in Hastings, an interpreter from the Guilin Foreign Affairs Office. Efforts are being made to develop a true "work and cultural" exchange on a one-for-one basis.





ABOUT GUILIN



Guilin is one of China's smaller urban centres, now modernising rapidly, under the influence of opening to overseas tourism in 1973.

It is also an ancient historical centre, with a district renowned for its breathtaking and picturesque scenery. Guilin is found in the north-eastern part of Guangxi Zhuang

Autonomous Region, 150 metres above sea level, and about a fifty-minute flight inland from Guangzhou (Canton). The Municipal territory embraces an area of some 4,195 sq. km.

History:

Guilin has a rich and long culture and heritage, dating back more than 2,000 years. The construction of a canal linking the Xiangjiang and Lijiang rivers in 214BC for the purpose of conveying military supplies, saw Guilin begin to develop a geographic and strategic importance. Some splendid cultural relics and historical sites have been found and maintained. These include fossils of human teeth dating back 50,000 years, stone implements earthenware, ancient graves and skeleton: 10,000 years old, stone carvings and buildings

Population:

More than 1,220,000 persons live in the Guilin Municipality, a local government territory spanning both urban and rural communities. The city itself has a population of about 540,000 people living within a 565 sq. km area. The region's population is made up of the majority Han people, and minority groups such as Zhuang, Miao and Hui.

Local Government:

The local authority, Guilin Municipality, incorporates the city of Guilin, two counties and four town districts. Its governing system includes a Mayor, five Deputy-Mayors, and a comprehensive set of departmental management. Local government has embarked

upon a strong tourist growth strategy over the last ten years, including urban infrastructural improvements, high-quality hotel and commercial developments, promotion and the launch of an international tourist festival in 1992.

Agriculture and Industry:

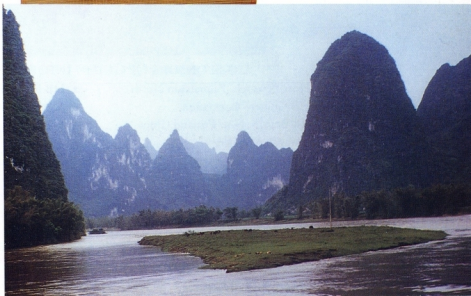
Local crops and products include rice, sugar cane, persimmons, pomelos, oranges, waterchestnuts (which have a popular demand in Hong Kong), tangerines, loquats and pears.

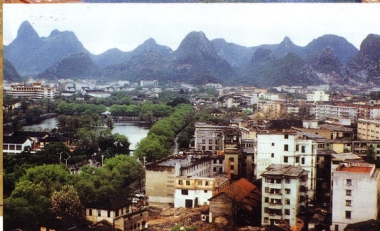
Light and heavy secondary production covers food, tourist needs, local crafts and embroidery, textiles, rubber, electronics, medicines, machinery and tools.

Tourism:

Diverse and attractive features abound in the Guilin area. The limestone karst physique of the local landscape, weathered and scoured over countless time, has taken the shape of forests of craggy peaks, winding rivers, solitary summits, caves and underground streams. They surely rank as some of the most spectacular and moving sights in the world, including an almost-magical journey to view the scenery of the Lijiang (the Li River), and the colour-lit stalagmites and stalactites of the Reed Flute Cave and Seven Star Caves (1,000 metres in length).

Accommodation, meals and tours are of high standard, and since 1973, visitor numbers to Guilin have burgeoned with domestic tourists at more than 5,000,000 and overseas topping 500,000 p.a.





CO-SPONSORS OF GUILIN INFORMATION BOOKLET

- Hort Research, Palmerston North
- HB Chinese Association
- HB Branch, New Zealand China Friendship Society
- Cox Coxon Ltd, Harcourts
- HB Regional Office, NZ Apple and Pear Marketing Board
- HB Fruitgrowers Association
- Community Services Division, Hastings District Council

Photography: James Baker. Colour Separations: HB Lithographics Ltd. Printing: Photolithox Printing Ltd.