

THOROUGHLY MODERN

# millie

A New Musical



A Napier Operatic Society Production  
Tabard Restaurant Theatre

17 July - 2 August 2008



# MENU

## HOSPITALITY:

Front of House:

Hostesses:

Lesley Reid  
Kim Davey,  
Fiona McKay,  
Judy White

Bar Manager:

Allan Howes

Catering Manager:

Ralph Dickinson

All departments assisted by Friends of Napier  
Operatic Society

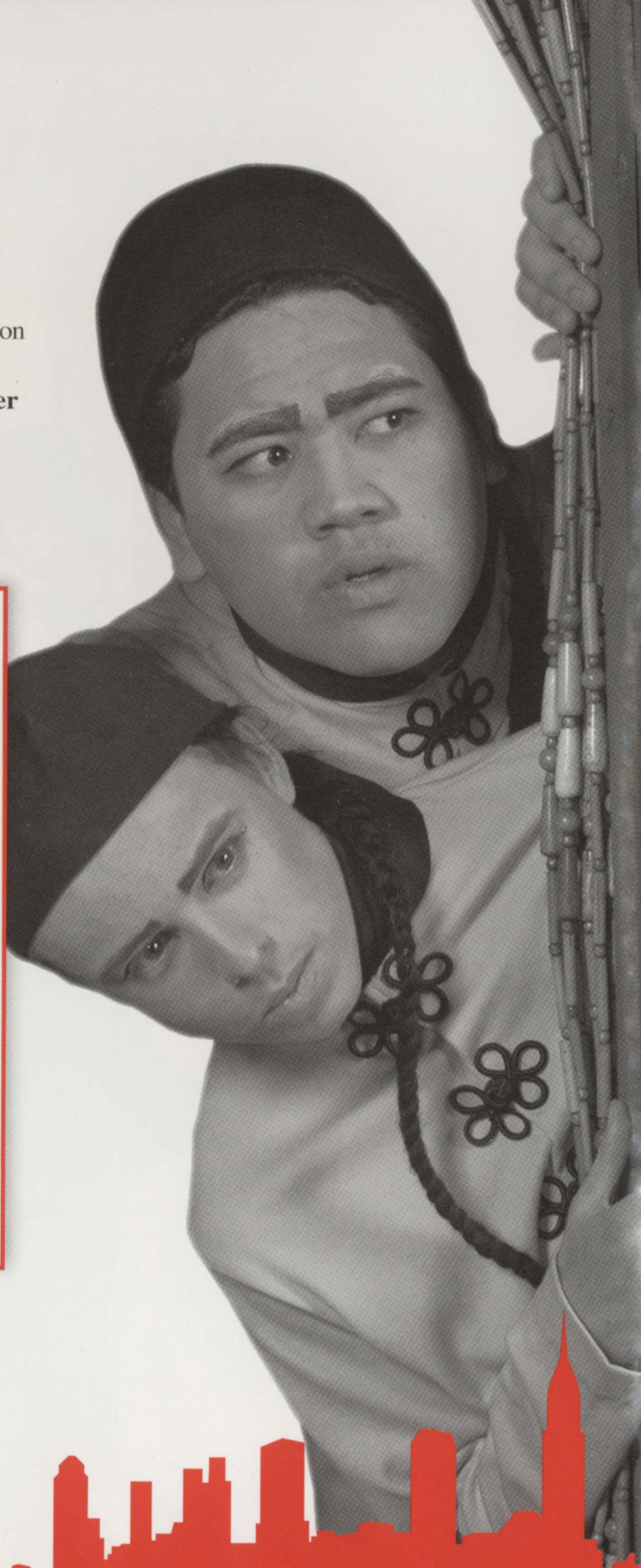
## MAIN

Italian Style Baked Fish in tomato,  
olive & cheese  
Rosemary roasted potatoes  
Fried couscous with  
spinach, cream cheese crepé  
Sautéed vegetables in buttery brown  
sugar and lemon sauce

## DESSERT

Thoroughly Decadent  
Chocolate Cocktail

*Riverside Wines*





THOROUGHLY MODERN  
**millie**

Book by  
**RICHARD MORRIS and DICK SCANLAN**

New Music by  
**JEANINE TESORI**

New Lyrics by  
**DICK SCANLAN**

Original Story and Screenplay by  
**RICHARD MORRIS**

For the

Universal Pictures Film

Originally Produced for Broadway by

Michael Leavitt, Fox Theatricals, Hal Luftig, Stewart F.Lane, James L. Nederlander,  
Independent Presenters Network, L. Mages/M. Glick, Berinsein, Manocherian/Dramatic  
Forces, John York Noble and Whoopi Goldberg

By arrangement with Hal Leonard Australia Pty Ltd Exclusive agent for Music Theatre International (NY)

## PRESIDENT'S MESSAGE

*Thoroughly Modern Millie* is the second of our 2008 Tony Season shows; this fun, bright and spirited romp is set in the 1920s, and is being held to coincide with Napier Art Deco Trust's Deco Decanted Weekend.

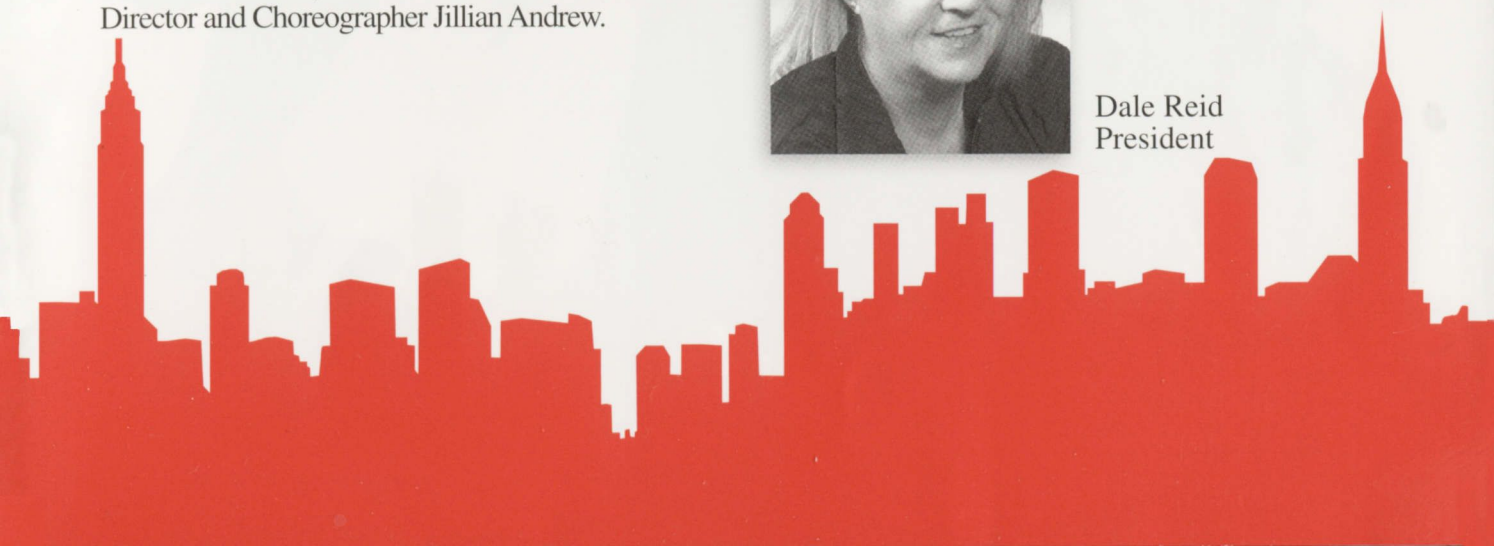
We sincerely thank our sponsors and all those who have contributed to this production. Your tremendous support has been invaluable and greatly appreciated.

We are fortunate to be able to bring back the successful, talented and creative team that last worked together on *The Boyfriend* in 2006; Tessa-May Brown as Director, Frances Te Weehi Musical Director and Choreographer Jillian Andrew.

The Tabard Theatre Meal & Show productions have been extremely popular with the Hawke's Bay audiences for more than 30 years and *Thoroughly Modern Millie* continues this trend. After many hours of dedicated commitment and hard work from the Company it gives us real pleasure to invite you to sit back and enjoy!



Dale Reid  
President





# FROM THE DIRECTOR

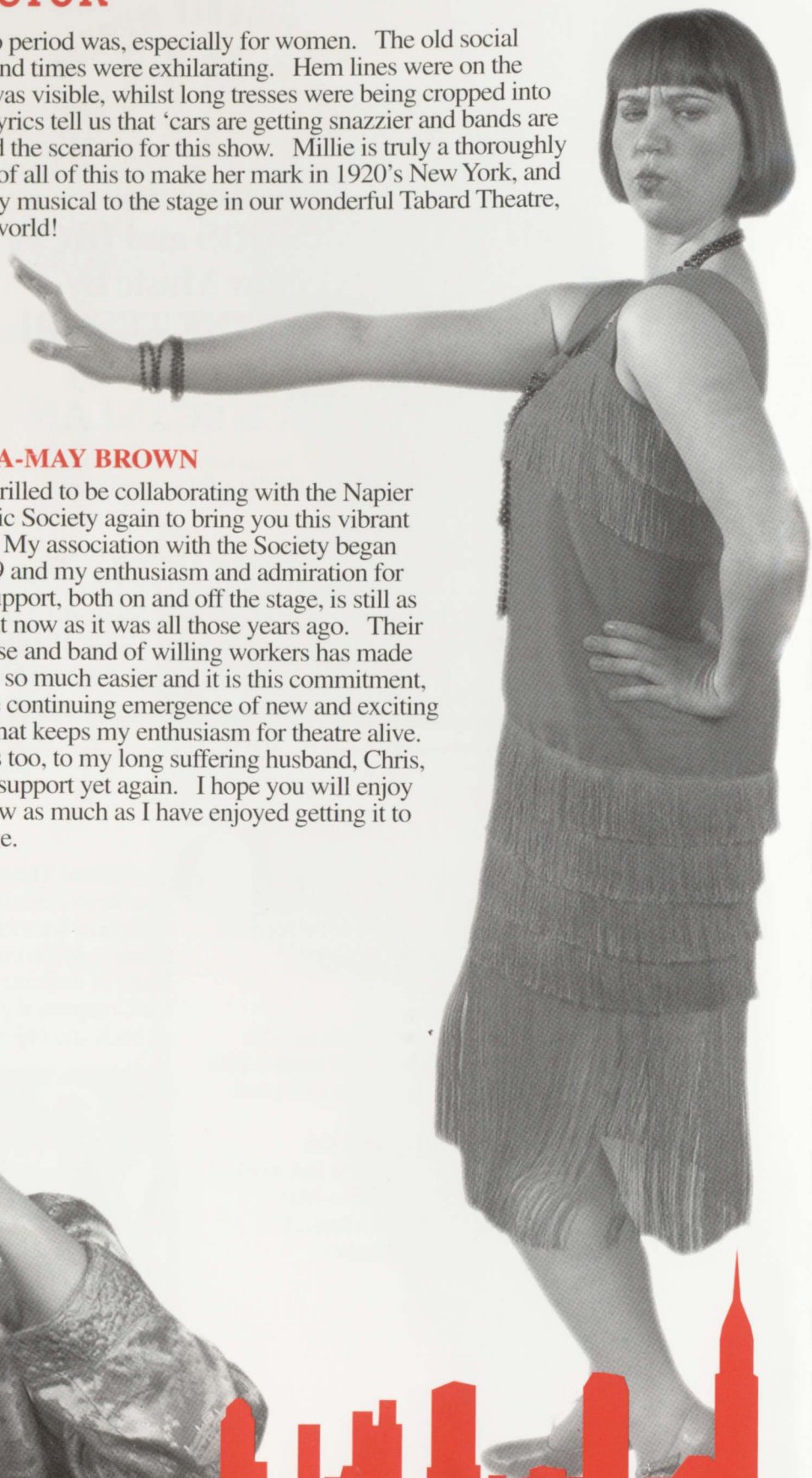
What an exciting time the Art Deco period was, especially for women. The old social constrictions began melting away and times were exhilarating. Hem lines were on the rise, heavens – even the odd knee was visible, whilst long tresses were being cropped into the new ‘modern’ bob style. The lyrics tell us that ‘cars are getting snazzier and bands are getting jazzier!’ and this was indeed the scenario for this show. Millie is truly a thoroughly modern miss who takes advantage of all of this to make her mark in 1920’s New York, and it has been a joy to bring this snappy musical to the stage in our wonderful Tabard Theatre, here in the Art Deco capital of the world!

## DIRECTOR



### TESSA-MAY BROWN

I am thrilled to be collaborating with the Napier Operatic Society again to bring you this vibrant show. My association with the Society began in 1969 and my enthusiasm and admiration for their support, both on and off the stage, is still as relevant now as it was all those years ago. Their expertise and band of willing workers has made my job so much easier and it is this commitment, and the continuing emergence of new and exciting talent that keeps my enthusiasm for theatre alive. Thanks too, to my long suffering husband, Chris, for his support yet again. I hope you will enjoy the show as much as I have enjoyed getting it to the stage.





# MUSICAL DIRECTOR

## FRANCES TE WEEHI

Frances has been involved in music all of her life. She has studied piano since the age of seven and has taught and supported many people making music over the years. Currently Frances is teaching classroom music at Napier Girls' High School and is very happy to be involved with Tessa, Jillian and the wonderful cast participating in this great musical.



# CHOREOGRAPHER

## JILLIAN ANDREW

Jillian specialised in Ballet, Tap, Modern and Competition stage work at her Auckland-based Dance School for 27 years before moving south to Hawke's Bay. She is an Examiner for Theatrical Dance International, a freelance choreographer, actor, singer, dancer and

has performed in a number of Musicals. Jillian has choreographed *Gypsy* and *The Boyfriend* for Napier Operatic Society and is delighted to be working with Tessa on this show. Enjoy.





# SYNOPSIS

Set in 1922, the story revolves around the adventures of Millie Dillmount, who escapes to New York City from Salina, Kansas, determined to marry her wealthy boss - whoever he may be. Shedding her country girl image for the modern look of a "flapper", she takes a room at the Priscilla Hotel for Women and gets a job as a stenographer at the Sincere Trust Insurance Company. In short time, she finds herself involved with Jimmy Smith, an apparently ne'er-do-well paper clip salesman, Miss Dorothy Brown, a genteel aspiring actress who never seems to have spare change, Trevor Graydon, her no-nonsense boss, and Muzzy van Hossmere, a madcap heiress with a zest for the high life.

The Priscilla Hotel proves to be a front for a white slavery ring, headed by Mrs. Meers, the property's proprietor, and her two bumbling Asian henchmen. Her ideal target is an attractive orphaned girl with no family who won't be missed if she suddenly disappears.

Millie, who gets mail from home on a regular basis, is hardly a likely candidate, but Miss Dorothy (as she insists she be called), who hasn't a soul in the world, is perfect.

When Millie puts two-and-two together and realises what has transpired, she devises a harebrained scheme to save her friend from the clutches of the white slavers before

Miss Dorothy is shipped to the Far East. Before long, chaos reigns, and naturally-good wins out over evil!





# CAST

in order of appearance

<b>MILLIE DILLMOUNT</b>	Josie Burdon
<b>MUGGER</b>	Roger Berridge-Burley
<b>JIMMY SMITH</b>	James McCaffrey
<b>RUTH</b>	Janine Hill
<b>GLORIA</b>	Sharron Pardoe
<b>RITA</b>	Annette Davey
<b>ALICE</b>	Lucy Reekie
<b>CORA</b>	Emma Smith
<b>LUCILLE</b>	Lucy Cresswell
<b>ETHEL PEAS</b>	Lee Patrice
<b>MRS MEERS</b>	Carol Della Barca
<b>MISS DOROTHY BROWN</b>	Rachel Foley
<b>CHING HO</b>	Simeon Ria
<b>BUN FOO</b>	Anthony Collier
<b>MISS FLANNERY</b>	Sharron Pardoe
<b>TREVOR GRAYDON</b>	Chris Atkinson
<b>PEARL LADY</b>	Lee Patrice
<b>LECH</b>	Ben Black
<b>POLICEMAN</b>	Roger Berridge-Burley
<b>MUZZY VAN HOSSMERE</b>	Wendy Revell
<b>KENNETH</b>	Roger Berridge-Burley
<b>MATHILDE</b>	Jillian Andrew
<b>GEORGE GERSHWIN</b>	Raymond Gempton
<b>IRA GERSHWIN</b>	Ben Black
<b>BILLY</b>	Jeremy Randall
<b>DOROTHY PARKER</b>	Sharron Pardoe
<b>RODNEY</b>	Matt Nicoll
<b>WAITER</b>	Roger Berridge-Burley
<b>DAPHNE</b>	Lee Patrice
<b>DEXTER</b>	Raymond Gempton
<b>MAMA</b>	Jillian Andrew
<b>NEW MODERN</b>	Emma Smith





# VOCAL NUMBERS

## ACT ONE:

### New York 1922

Overture \_\_\_\_\_ Orchestra

### 1922 New York City

Not for the Life of Me \_\_\_\_\_ Millie

Thoroughly Modern Millie \_\_\_\_\_ Millie and Ensemble

(Lyrics by Sammy Cahn, Music by Jimmy Van Heusen)

### Lobby of the Hotel Priscilla

How the Other Half Lives \_\_\_\_\_ Millie and Miss Dorothy

### Office of the Sincere Trust Insurance Company

The Speed Test \_\_\_\_\_ Trevor Graydon, Ensemble

(music from the patter song "My Eyes Are Fully Open" from Gilbert and Sullivan's Ruddigore)

### Twelfth floor hallway of the Hotel Priscilla

They Don't Know \_\_\_\_\_ Mrs. Meers

### Cafe Society, a speakeazy

The Nuttycracker Suite \_\_\_\_\_ Ensemble

(derived from music by Pyotr Ilyich Tchaikovsky)

### The penthouse of Muzzy Van Hossmere

Only in New York \_\_\_\_\_ Muzzy

### Muzzy Van Hossmere's terrace, to twelfth floor of the Hotel Priscilla

Jimmy \_\_\_\_\_ Millie

(Lyrics by Jay Thompson and Scanlan, Music by Thompson and Tesori)

## ACT TWO:

Entr-acte \_\_\_\_\_ Orchestra

### The Sincere Trust Insurance Company

Forget About the Boy \_\_\_\_\_ Millie, Miss Flannery, Stenographers

Ah Sweet Mystery of Life \_\_\_\_\_ Trevor Graydon & Dorothy

### The window ledge outside Millie's office

I Turned the Corner \_\_\_\_\_ Millie, Jimmy, Miss Dorothy, Trevor Graydon

I'm Falling in Love with Someone \_\_\_\_\_ Jimmy, Millie, Trevor Graydon and Miss Dorothy

(Lyrics by Rida Johnson Young, Music by Victor Herbert)

### The twelfth floor of the Hotel Priscilla

Muqin \_\_\_\_\_ Mrs. Meers, Bun Foo, Ching Ho

(Lyrics by Sam M. Lewis, Joe Young, Walter Donaldson and Scanlan, Music by Lewis, Young, and Donaldson)

### Cafe Society

Long as I'm Here with You \_\_\_\_\_ Muzzy and Men

### Cafe Society, Kitchen door

Gimme Gimme \_\_\_\_\_ Millie

### Hotel Priscilla

The Speed test \_\_\_\_\_ Millie, Trevor Graydon

(Reprise)

Ah Sweet Mystery of Life \_\_\_\_\_ Dorothy & Ching Ho

Finale \_\_\_\_\_ All

Songs are by Jeanine Tesori and Dick Scanlan, unless otherwise noted.

## ORCHESTRA

Percussion: Bill Mayo  
Double Bass: Leon Speakman  
Keyboard: Amanda Cooper

Banjo: David Chalmers  
Piano: Frances Te Weehi  
Violin: Tiffany Anderson

## Intermission





# CAST

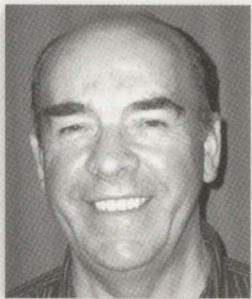


## CHRIS ATKINSON

Since joining the Napier Operatic Society almost three years ago, Chris has definitely caught the theatre bug! Following roles in *The Full Monty*, *The Threepenny Opera*, *Back to the 80's*, *Beauty & the Beast* and *The Producers*, the Tabard Theatre has become a second home to him, after moving to Hawkes Bay from his native England. As a big fan of the Art Deco festivals, Chris is relishing the opportunity to get into the 1920's spirit as work-obsessed boss, Trevor Graydon. It is always great fun working with so many friends and talented people in all parts of the theatre.

## BENJAMIN BLACK

Benjamin grew up in Whakatane and after moving to Napier completed a Diploma in Performing Arts at EIT. He then worked as a stage manager and has been involved in various dance productions. Over the past three years, he has gained a reputation and persona as 'Hawky' the Mascot for the HB Basketball team and is also 'Kahu' the Mascot for the Magpies Rugby team. Benjamin has also appeared in *Smokey Joe's Café* and *Back to the Eighties*. He is currently completing his Modern Apprenticeship in Tourism through the National Aquarium of New Zealand, where he is now working.

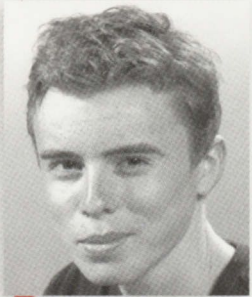


## ROGER BERRIDGE-BURLEY

Roger's first singing experience since school choir days was when he joined a group of men in 1995 who wanted to form a Barbershop Chorus to sing four-part harmony. The group named themselves 'Bay Harmony' and apart from a couple of breaks, Roger still sings in the lead section. Roger's first involvement with NOS was when he was asked to sing in the chorus for the musical *Cats*, where he sang (behind the scenes) in the bass section along with other very talented singers and performers. Roger says the whole experience in *Cats* with the Society was one of the most enjoyable in his life.

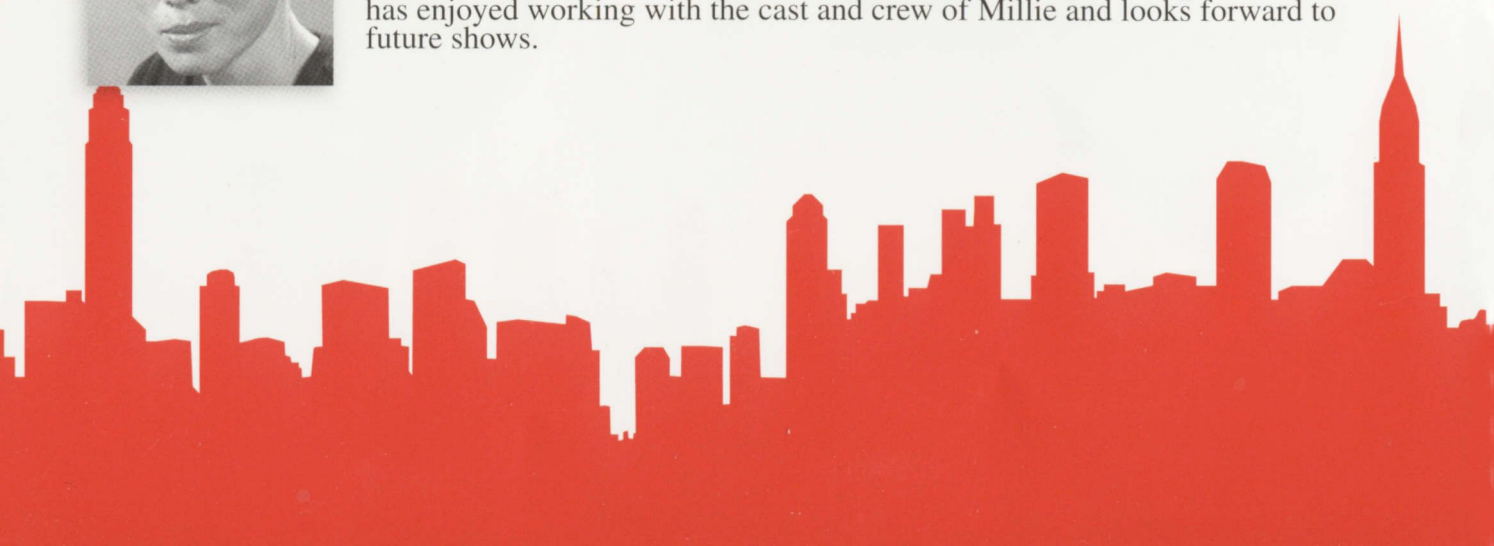
## JOSIE BURDON

This is Josie's first show with NOS and she has loved every minute of it. Originally from Blenheim, Josie has been involved in many shows there, although she filled roles of production manager, musical director and chorus mistress as opposed to roles on stage. This is the first time she has had more than one line to learn and a part that has an actual name! Josie is the music teacher at William Colenso College and loves being involved in the many facets of the Performing Arts.



## ANTHONY COLLIER

Anthony is 16 years old and attends Napier Boys' High School. *Thoroughly Modern Millie* is his seventh NOS production. He has performed in shows such as *The Half Men of O*, *Joseph and the Technicolor Dreamcoat*, *Beauty and the Beast* and *Chicago*. Anthony has found the role of Bun Foo to be a challenging yet fun experience and an "interesting learning curve". He has enjoyed working with the cast and crew of *Millie* and looks forward to future shows.





# CAST



## LUCY CRESSWELL

Lucy teaches drama at Hastings Boys' High School and performed in her first production for NOS last year in *Cats*. She is pleased to be working with some of the same cast and crew, and having the opportunity to meet other wonderful people along the way. Lucy has done musical theatre since her university days and has appeared in such shows as *Les Miserables*, *West Side Story*, *My Fair Lady*, *Grease*, *Annie*, and *Slice of Saturday Night*. She is thoroughly enjoying this experience and can't wait for show week!

## CAROL DELLA BARCA

Carol was born into a theatrical family and has been involved in the theatre most of her life. Carol is passionate about bringing youth to the theatre and has directed many youth productions including *Fiddler on the Roof*, *Godspell*, *Oliver* and *Bugsy Malone*. Her acting roles have included Golde in *Fiddler on the Roof* and Eulelee McKecnee Shinn in *Music Man*.



## ANNETTE DAVEY

It has been over a decade since Annette was last singing and dancing in a Napier Operatic Society show – *42nd Street* being her last. So after all those years of waitressing and hostessing for NOS, she is thoroughly enjoying being back on stage for *Thoroughly Modern Millie*. Annette would like to thank the cast and crew for being such a great bunch of people to share this experience with and also her eldest daughter, Kim, for encouraging her to audition and giving her the push she needed to have another go!

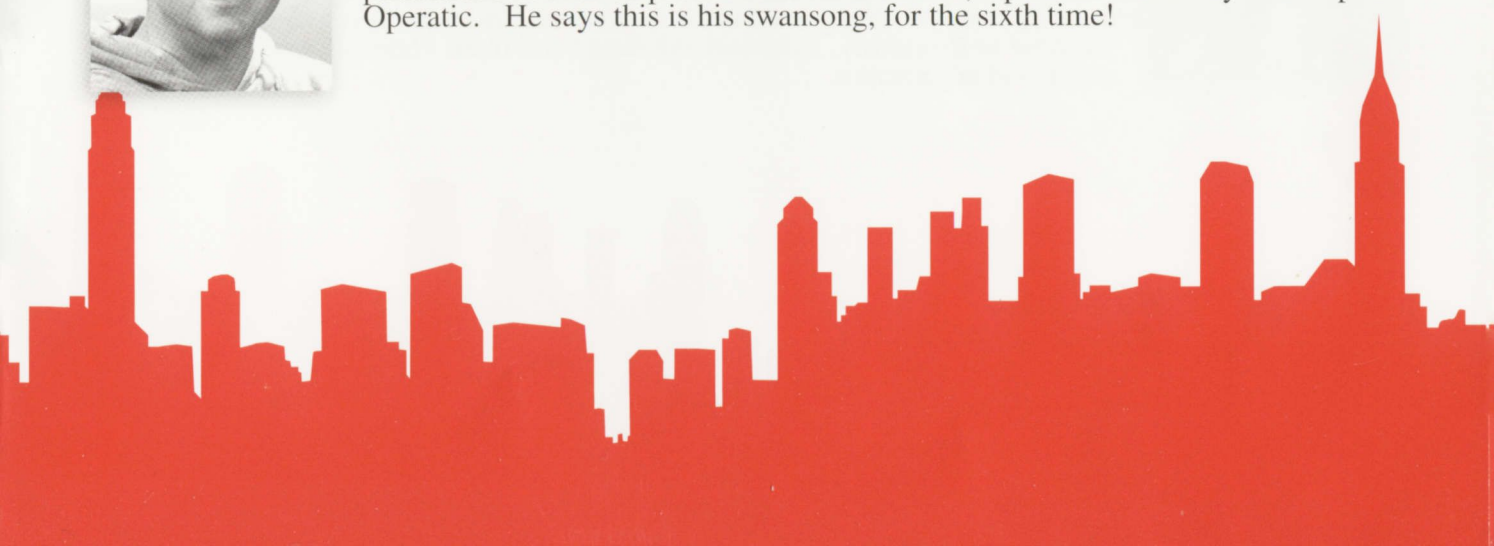
## RACHEL FOLEY

Rachel, a 16-year-old student at Napier Girls' High School, first appeared for NOS in 2000 in *West End to Broadway*. In 2003 she appeared as an orphan in *Annie* and has also been involved in a number of NOS Theatre School productions. In 2006 she was on stage again in *The Boyfriend* also directed by Tessa-May Brown. This is Rachel's second show for the year having taken part in her school production of *Chicago* in May. She is enjoying working with this fun and talented cast.



## RAYMOND GEMPTON

Years of childhood tap lessons and competitions paid off for Raymond when he performed in Napier Operatic's *42nd Street*, one of his favourite shows so far in a long association with theatre. As a hairstylist, Raymond's talent has assisted performers in over 40 productions for the Frivs, Opera Hawke's Bay and Napier Operatic. He says this is his swansong, for the sixth time!





# CAST



## JANINE HILL

Janine's involvement with the Society spans 28 years since her appearance in a *Canterbury Tales Music Hall*. A third generation member, Janine has loved participating both on and off the stage. She is also enjoying seeing her children becoming involved in the Society's wonderful Children's Theatre. Janine is once again grateful to her husband, Nigel, and her children, Taylor and Brayden, for their support through her recent appearances in *Beauty and the Beast* and *Cats* and now the Tony Award-winning musical, *Thoroughly Modern Millie*. Sit back and enjoy.

## JAMES McCaffrey

James has been extensively involved in all areas of the theatre as an actor, singer, musician, director. Recent highlights include Harold Hill in *Music Man* Emcee in *Cabaret*, Jesus in *Godspell* and Tevye in *Fiddler on the Roof*. James is thrilled to be playing the part of Jimmy.



## MATT NICOLL

Matt promised himself a break from musicals after *The Producers*, but the chance to work with Tessa and her team was too good to pass up. His love of acting grew from an overactive imagination and, after directing Napier Boys' High School shows, has developed a real appreciation of musicals that the Napier Operatic Society has provided a great opportunity to explore.

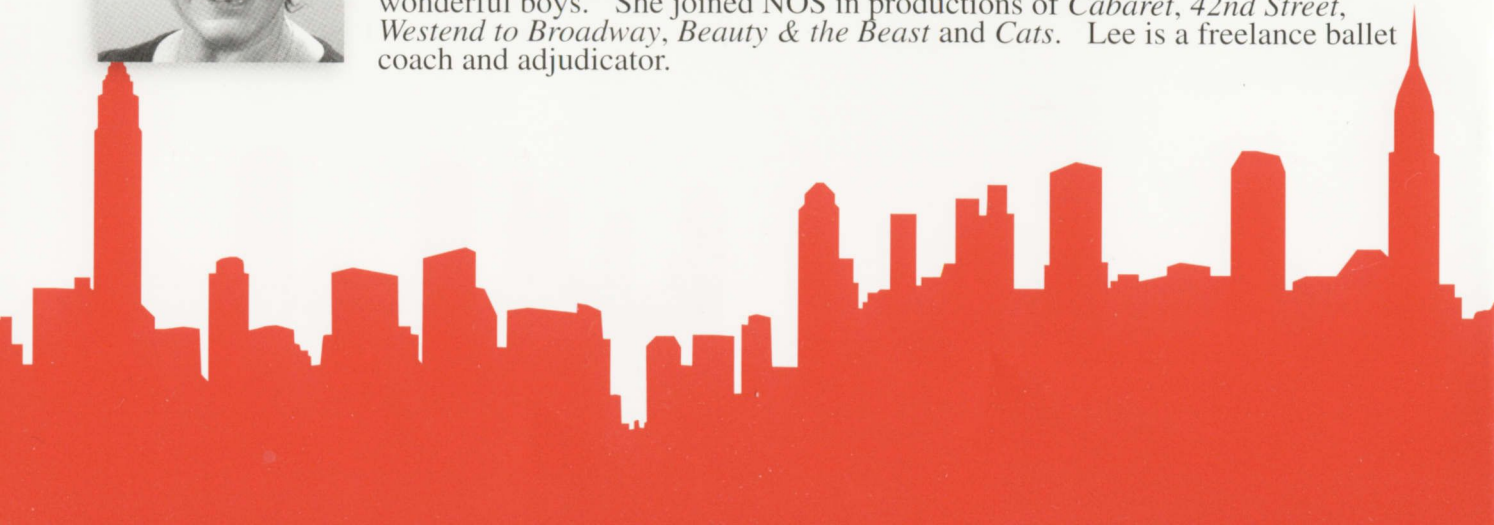
## SHARRON PARDOE

Sharron has enjoyed being part of the Napier Operatic family for more than 20 years. After a hectic 12 months with production roles in *Cats* and *The Producers*, she planned to take a break but the chance to kick up her heels on the Tabard stage, playing the formidable Miss Flannery, proved too tempting. She's sure you will enjoy this mid-winter, Art Deco frolic.



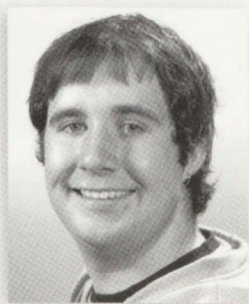
## LEE PATRICE

As principal dancer with The Royal New Zealand Ballet, Lee has performed many leading roles, touring extensively through New Zealand and internationally. She appeared in the television production of *Gotta Dance* with Gene Kelly and created the title role in *Jean Batten*. Lee received critical acclaim for her New York debut and her final portrayal of *Giselle*. After retiring her pointe shoes, Lee married physiotherapist, Tony Snell and together they have three wonderful boys. She joined NOS in productions of *Cabaret*, *42nd Street*, *Westend to Broadway*, *Beauty & the Beast* and *Cats*. Lee is a freelance ballet coach and adjudicator.





# CAST



## JEREMY RANDALL

Jeremy is a 19 year old who enjoys performing on stage. For the past eight years he has gained a wide range of experience participating in various shows and stage work. He has versatility in dancing, singing and acting having performed with Napier Operatic Society previously in *Annie*, *My Fair Lady* and *Beauty and the Beast* to name a few.

## LUCY REEKIE

Lucy is 19 years old and has been involved in speech, drama and singing since the age of eight. She completed her ATCL Diploma in Performance Theatre in 2006. This is Lucy's first production with Napier Operatic Society and she is loving the experience. She will be auditioning for other shows in the near future. Lucy has completed 7th Form at Rudolf Steiner School in Hastings and is studying at EIT to become a Nanny Educator.



## WENDY REVELL

A long association with musical theatre started for Wendy as a dancer in *Call Me Madam* with the Hastings Musical Theatre Co, at age 14. Several years as a singer/dancer/musician followed with both local bands, stage shows and the P&O Lines. Wendy married and moved to the Rangiteiki district where she continued to act as director and musical director to school and theatre productions as well as teaching speech, drama and piano. Recent stage work includes Mrs Slocombe in *Are You Being Served* and chorus roles in the Napier Operatic's production of *The Producers*.

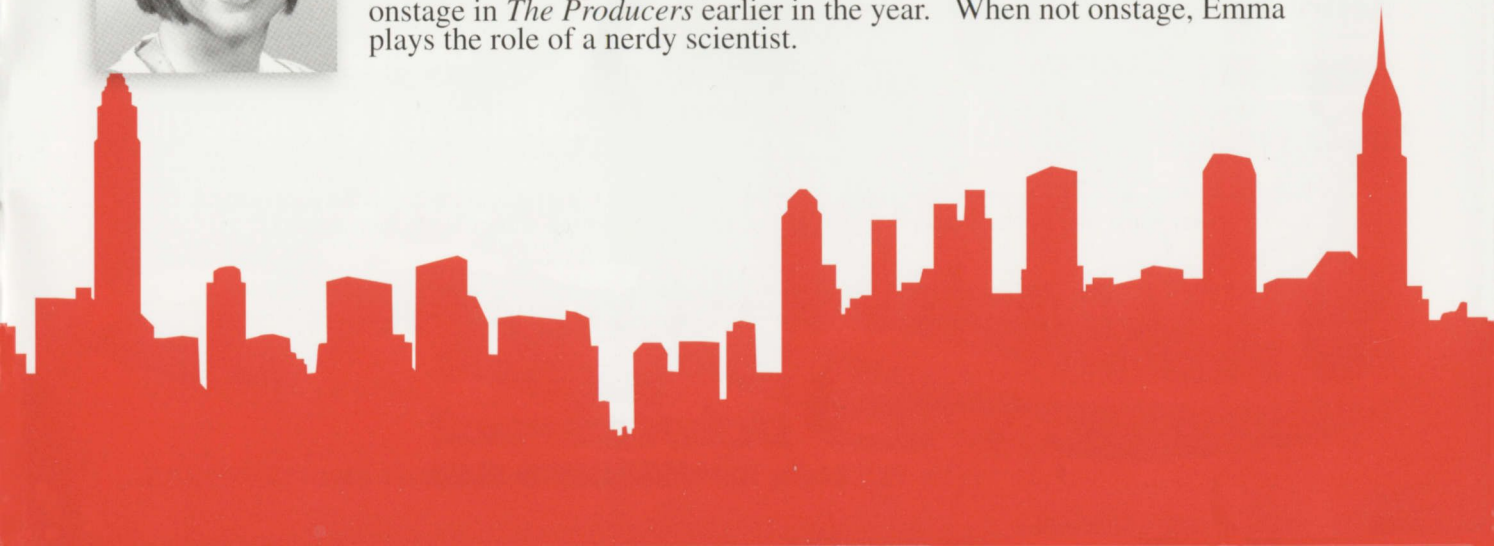
## SIMEON RIA

Although a rookie, Simeon is an eager and willing student of the arts. At a young age his musical and drama talents earned him such names as 'The Jukebox' and 'Disco Kid'. At school he was a member of the choir in pre-high school days but he never really found his love for drama until his senior years, when he was inspired by teachers to "give it a go". He did just that, with his first acting role as the leading man, Dr Nick Necrophiliac in the musical *Dracula Spectacular* and a singer in *Smokey Joe's Café*. Watch this space.



## EMMA SMITH

Emma first became involved with the Society at the age of 12, in the children's choir for *Joseph and the Technicolour Dreamcoat*. She took part in several shows as a teenager before leaving the Bay for 10 years. During her time away she has worked with Theatre Companies in Palmerston North and Brisbane, but is now happy to be back in the Bay and once again involved with this wonderful society. This is her second show for 2008, having been onstage in *The Producers* earlier in the year. When not onstage, Emma plays the role of a nerdy scientist.





# PRODUCTION TEAM

**Production Manager:**  
**Production Secretary:**  
**Production Assistant:**  
**Stage Director:**  
**Stage Managers:**  
**Construction Manager:**  
**Lighting Designer:**  
**Properties Manager:**  
**Wardrobe Manager:**  
**Makeup Manager:**  
**Hair Stylist:**  
**Set Designer:**  
**Scenic Artist:**  
**Cast & Crew Suppers:**

Darryl Mitchell  
Norah Griffin  
Fiona McKay  
Alan Jones  
Sonya Aifai, William Waitoa  
Colin Pritchard  
Paul Collier  
Jacque Wilton  
Wendy Mooney  
Julie Avery  
Raymond Gempton  
Trevor Ruffell  
Chris Green  
Donna O'Shaughnessy

## PRODUCTION CREW

### Stage & Construction:

Anne Aifai, Patteson Aifai, Sonya Aifai,  
Harriette Barker, Brian Bulford, Eion McKinnon,  
Irene McKinnon, Rachael McKinnon,  
Marc Collier, Darryl Ginns, Finn Dinneen,  
Kerry Greenhalgh, Brian Harber, Brendan Hey,  
Alan Holt, Allan Howes, Philippa Jones,  
Brian Nathan, Sally Pardoe, Ian Scott,  
Keiran Wright, Pierre van der Zwet  
Michael Peterson, Tony Unsworth,  
Alan Williams

### Lighting Operators:

Kerry Unsworth, Neill Page

### Sub Titles:

### Properties Team:

Anne Collier, Chris Kenah,  
Rachel McKinnon, Alice Pardoe,  
Jennifer Randall, Derryn Toomey,  
Michelle Winter

### Wardrobe & Dressers:

Margery Gurney, Gail Jones, Jeanne Lewis,  
Adrienne Parsons, William Waitoa  
Jude Allan, Deborah Beck,  
Joanne Jowett-Morrel, Sarah Kerr,  
June Lawrence,

### Makeup Team:

Ngaire Boyce, Pam Christensen,  
Lynne Gibson, Irene McKinnon  
Sonya Aifai

### Cast & Crew Suppers:

### Publicity Manager:

### Publicity Team:

Josie Bell, Barbara Brown, Anita Davies,  
Donald Hurley, Karen McLean, Dale Reid,  
Judy White

### Advertising Signboards:

Oliver Christoffersen, Darryl Mitchell,  
Colin Pritchard

### Programme:

Victoria Hurley, Norah Griffin, Darryl Mitchell,  
Sharron Pardoe

### Booking Office:

Gail Jones, Dale Reid

We apologise if, due to programme deadlines, we have been unable to include all names in the programme.  
To everyone who has helped in this production, your contribution is very much appreciated.

*radio network*

 **ticketdirect**  
HAWKE'S BAY



# OFFICERS OF THE SOCIETY

**Patron:**  
**President:**  
**Vice President:**  
**Secretary:**  
**Treasurer:**  
**Chairman:**  
**Executive Committee:**

Peter Cox  
Dale Reid  
Sharron Pardoe  
Sonya Aifai  
Kaye Wishart  
Neill Page

Chris Atkinson, Peter Austin, Kim Davey, Anita Davies,  
Karen Green, Janine Hill, Allan Howes, Alan Jones,  
Irene McKinnon, Colin Pritchard

**Social Club**  
**Chairperson:**  
**Secretary:**  
**Committee:**

Raewyn Russell  
Michelle Winter

Patteson Aifai, Josie Bell, Eion McKinnon, Irene McKinnon

**Life Members:**

Dawn Unsworth, Alan Jones, Donald Hurley, Fred Twyford,  
Barrie Browne, Lyndsay Browne, Ros van de Ven, Les Robertson,  
Cliff Allen, Colin Pritchard, Brian Nathan, Ian Reid,  
Peter Shepherd, Gwyn Ace, John Briggs, Gillian Davies,  
Lois Reefman, Peter Eade, John Matthews, James Morgan

**Honorary Solicitor:**  
**Honorary Photographer:**

John Matthews  
Clive Ralph

## ACKNOWLEDGEMENTS

Carlyle Vet Clinic, Hawke's Bay Engravers, Hayter & Flemming Signs, Infinity Foundation Ltd, Kennedy Park Top 10 Resort, Marineland of NZ, NOS Social Club, Palmers Garden World, Clive Ralph Photographer, Riverside Wines, Russ Spiller, Theatre Hawke's Bay

And to all of those who have participated and contributed in ways large and small, the Society and Company of  
*Thoroughly Modern Millie* wish to extend their gratitude.

**Bluewater Hotel**  
NAPIER. NEW ZEALAND

**SPECIAL WEEKEND RATES**

LICENSED RESTAURANT & BAR.  
MAGNIFICENT SEA & INNER HARBOUR VIEW.

**TWO PERSON SPAS**

PRIVATE BALCONIES. LIFT ACCESS TO ALL FLOORS.  
AIR CONDITIONING AVAILABLE. GAMING MACHINES.  
TWIN/QUEEN/KING SIZE BEDS.

45 luxurious appointed executive, studio and 1 bedroom units (5 with cooking facilities).  
Lodge (sleeps 14). Conference facilities.

**Limousine & Launch Hire**

- The Luxurious Bentley
- The Classic Limousine
- The Vintage Car
- Take a cruise
- The Mobile Party Hummer

Public Welcome  
**BLUEWATER MINI GOLF**

10 West Quay, Ahuriri, Napier Phone 06 835 8668  
Fax 06 835 0188 Email [bluewaterhotel@xtra.co.nz](mailto:bluewaterhotel@xtra.co.nz)  
Web [www.bluewaterhotel.co.nz](http://www.bluewaterhotel.co.nz)

**RESERVATIONS FREEPHONE 0508 NAPIER (0508 627 437)**



