

NAPIER GIRLS' HIGH SCHOOL

PRESENTS

"HMS PINAFORE"



or *"THE LASS THAT LOVED A SAILOR"*

MUNICIPAL THEATRE — — NAPIER
SATURDAY, 16th AUGUST & MONDAY, 18th AUGUST, 1958

OPEN A TIME PAYMENT ACCOUNT AT . . .

McGRUERS

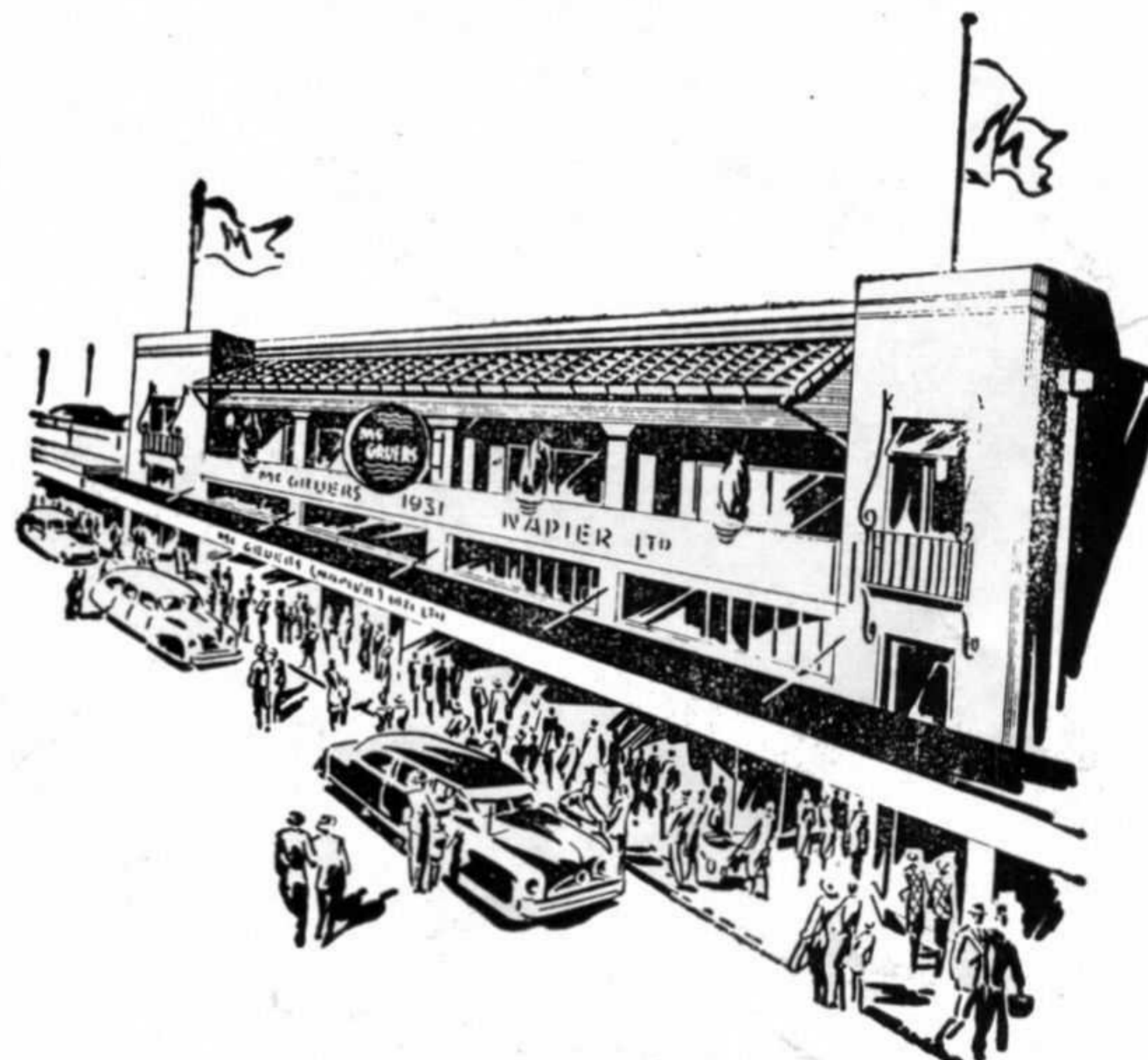
NAPIER'S POPULAR DRAPERS AND OUTFITTERS

IT'S AS SIMPLE AS THIS—

Call at our office and arrange for the amount of credit you require and pay 1/- deposit for each pound's worth. The balance is spread in easy payments over 20 weeks.

**CLOTHING FOR MEN, WOMEN, CHILDREN
MANCHESTER — FURNISHINGS — DRESS
FABRICS — SHOES — FANCY GOODS, etc.**

Spread your Payments over 20 weeks



ROBERT HOLT & SONS LTD.

Pioneers in the Timber Industry with nearly a century of service
to Hawke's Bay.

Specialists in Timber Preservation

TIMBER JOINERY HARDWARE
PAINT WALLPAPERS GLASS
FENCING MATERIALS

EVERYTHING FOR BUILDING

ROBERT HOLT & SONS LTD.

NAPIER and HASTINGS.



SYNOPSIS

—:0:—

ACT I

The scene is the quarter deck of H.M.S. Pinafore which is anchored in Portsmouth Harbour, and the crew are busily preparing the ship for the expected arrival of the First Lord, Sir Joseph Porter. Little Buttercup, a bumboat woman who is by no means as small as her name would imply, comes aboard with a basket of goods for sale. She is overcome with remorse when Ralph Rackstraw, a handsome young sailor, appears. He is in love with the Captain's daughter, Josephine, and proceeds to tell of this. Captain Corcoran now appears on the poop deck and greets his crew, after which he expresses to Buttercup his concern that Josephine does not wish to marry Sir Joseph. However, when she arrives on deck she assures her father that she will do his bidding although she is really in love with Ralph.

Sir Joseph Porter duly arrives, attended by his sisters, cousins and aunts, and tells everyone of his meteoric rise to fame. After inspecting the crew he retires with the Captain to discuss the object of his visit. In the meantime Ralph declares his love which Josephine haughtily rejects, and so he prepares to end his life with a pistol the Boatswain has thoughtfully provided. At the crucial moment our heroine enters and reveals her love for him, and an elopement is planned for that evening, a plan which pleases everyone save Dick Deadeye.

ACT II

Night has fallen and alone on the poop deck the Captain is singing to the moon of all his troubles while Little Buttercup watches him from below. She adds to his anxiety by hinting at further changes in store. Sir Joseph reappears and reproaches the Captain with his daughter's coldness. Josephine enters and tries to decide which to choose—luxury as the wife of the First Lord or poverty with Ralph. Sir Joseph convinces her that love is all important and she allows him to think that his suit is successful while in reality she is now determined to marry Ralph. Dick Deadeye reveals the elopement plan to Captain Corcoran who lies in wait armed with the cat o' nine tails. Just as the pair are about to leave the ship he discloses himself and in his intense annoyance uses a "big, big D—," which is overheard by Sir Joseph who orders him to his cabin. When the First Lord learns the reason for this lapse he has Ralph clapped into irons too. Affairs are interrupted by Little Buttercup who discloses that she accidentally exchanged Ralph and Captain Corcoran when they were babies. On hearing this Sir Joseph, with true Gilbertian logic, sends for them both and raises Ralph to the rank of Captain, and reduces Corcoran to an able seaman. Since it is out of the question for one of Sir Joseph's exalted station to marry the daughter of a mere seaman, his Lordship nobly consents to the marriage of Ralph and Josephine. The erstwhile Captain consoles himself with Little Buttercup, while poor Sir Joseph is forced to make do with Hebe, the most determined of the "cousins."

DRAMATIS PERSONAE

PRINCIPALS—

The Rt. Hon. Sir Joseph Porter, K.C.B. (First Lord of the Admiralty)	Dale Youren
Captain Corcoran (Commanding H.M.S. Pinafore)	Gay Spackman
Ralph Rackstraw (Able Seaman)	Diane Holmes
Josephine (The Captain's Daughter)	Janice Marple
Little Buttercup (A Portsmouth Bumboat Woman)	Christina MacIntyre
Hebe (Sir Joseph's First Cousin)	Erica McLeod
Dick Deadeye (Able Seaman)	Wilma Harvey
Bill Bobstay (Boatswain's Mate)	Leanna Walker
Bob Becket (Carpenter's Mate)	Suanne Bryant
Tom Tucker (Midshipmite)	Cecele Fleming

First Lord's Sisters, Cousins and Aunts

Barbara Ayling, Margaret Bartlett, Desley Bennet, Diane Blackford, Jennifer Cameron, Heather Davey, Robyn Grant, Patricia Hannah, Janice Hitchman, Marlene Hope, Jan Kelly, Sylvia Lee, Lesley Martin, Christine Miles, Pamela Milne, Alison Richards, Joyce Rosenberg, Joy Sanderson, Helen Williams.

Sailors

Patricia Buchanan, Christine Carney, Judith Creagh, Maureen Dixon, Diana Forrest, Diana Gooch, Jacquelyn Graham, Marian Holt, Gayel Hulford, Pauline Kirkham, Barbara Le Quesne, Mary-Ellen Mayo, Annette Pickering, Hilary Roach, Shirley Robertson, Janet Saul, Lindsay Smith, Eleanor Stanley, Elsa Swann, Patricia Withers.

Marines

Gail Bishop, Susan Bramley, Janet Clifton, Dawn Menzies.

Producer and Musical Director — — — JUNE BURKITT

SCENE: QUARTER-DECK H.M.S. PINAFORE

ACT I — NOON

INTERVAL — 15 Minutes

ACT II — NIGHT

Orchestra—

Conductor: Francis Bate.

Leader: Gladys Bate.

Violins: E. Dunn, N. Etheridge, W. Hammond, J. Hannon, D. Hansson, E. Lowry, I. McLean, K. O'Halloran, V. Tidy, G. Wade, M. Williams, A. Wilson.

Violas: A. Craigie, G. Etheridge.

Cellos: S. Girvan, L. Coxhead, Q. Gannaway.

Double Bass: R. Lavin.

Flute: C. White.

Clarinet: C. Jones.

Trumpet: H. Vincent.

Drums: E. Murnane.

At the piano: Winifred McCarthy.

Production Personnel—

Assistant Producer: Mrs R. Gourley.

Business Management: Miss R. Upchurch.

Costumes: Mrs D. Mills, Miss R. Matthew and girls.

Millinery: Miss I. Dent, Mrs N. Brunt.

Make-up: Miss H. McConnochie and girls.

Stage Manager: Mr A. Parker and Mr E. Boyes.

Scenery Painted by Miss N. Pallot and girls.

MUSICAL NUMBERS

—:0:—

ACT I

Overture.

- 1—Opening chorus—“We Sail the Ocean Blue.”
- 2—Recitative and song (Little Buttercup)—“Hail! Men o’ War’s Men.”
- 2a—Recitative (Little Buttercup and Boatswain)—“But Tell Me Who’s the Youth.”
- 3—Scena (Ralph and Chorus)—“The Nightingale Sighed for the Moon’s Bright Ray.”
Aria (Ralph)—“A Maiden Fair to See.”
- 4—Recitative, Song and Chorus (Captain Corcoran)—“My Gallant Crew, Good Morning.”
- 4a—Recitative (Little Buttercup and Captain Corcoran)—“Sir, You Are Sad.”
- 5—Song (Josephine)—“Sorry Her Lot Who Loves Too Well.”
- 6—Chorus of Women (behind the scenes)—“Over the Bright Blue Sea.”
- 7—Chorus of Sailors—“Sir Joseph’s Barge is Seen.”
- 8—Sir Joseph Porter, Cousin Hebe, Captain Corcoran—“Now Give Three Cheers.”
- 9—Song (Sir Joseph and Chorus)—“When I Was a Lad.”
- 9a—Exit for Ladies—“For I Hold that on the Seas.”
- 10—Trio and Chorus (Ralph, Boatswain and Carpenter)—“A British Tar is a Soaring Soul.”
- 11—Duet (Josephine and Ralph)—“Refrain, Audacious Tar.”
- 12—Finale—“Can I Survive this Overbearing.”

ACT II

Entr’ acte

- 13—Song (Captain Corcoran)—“Fair Moon, to Thee I Sing.”
- 14.—Duet (Little Buttercup and Captain Corcoran)—“Things are Seldom What They Seem.”
- 15—Scena (Josephine)—“The Hours Creep on Apace.”
- 16—Trio (Josephine, Captain Corcoran and Sir Joseph Porter)—“Never Mind the Why and Wherefore.”
- 17—Duet (Captain Corcoran and Deadeye)—“Kind Captain, I’ve Important Information.”
- 18—Soli and Chorus—“Carefully on Tip-toe Stealing.”
- 19—Octet and Chorus—“Farewell, My Own.”
- 20—Legend (Little Buttercup and Chorus)—“A Many Years Ago.”
- 21—Finale—“Oh Joy! Oh Rapture Unforeseen.”

THANKS

We wish to take this opportunity to thank the large number of people, who, by their unstinted efforts and co-operation, have made this production possible.

The Musician's Choice



THE KNIGHT
PIANOFORTE

*See the Lovely Models in
Walnut or Mahogany*

SEE OUR LARGE STOCKS
of
LONG PLAYING RECORDS

Including the Famous
GILBERT AND SULLIVAN OPERAS



74 Years of Service to the Musical Public.

New Imperial Portable
Typewriters Still Available

THE FINEST AND STURDIEST MACHINE IN
FIBRE GLASS OR LUXURY CASE.

£5 DEPOSIT—£2/14/- Monthly for 12
months.

TIMMS' TYPEWRITER AGENCY

TENNYSON STREET, NAPIER

TELEPHONE 3340.

P.O. BOX 308

Printed by The Daily Telegraph.
