

# HASTINGS

## NEW ZEALAND

With the Compliments  
of the  
HASTINGS BOROUGH COUNCIL

# HASTINGS

*Pacific  
Ocean*

AUCKLAND



**HASTINGS**

WELLINGTON

*Tasman  
Sea*

CHRISTCHURCH

DUNEDIN

Hastings is renowned throughout New Zealand for its glorious climate, rich fertile soils and high productivity. The latitude of Hastings, 39° 38', corresponds approximately with that of Central Spain or Southern Italy in the Northern Hemisphere. Hastings' mild and genial climate is therefore comparable with that of Mediterranean tourist resorts. Cool sea breezes temper the summer warmth, and winter days, though crisp, invariably are bright and sunny. The mean average temperature is 55° and the average annual rainfall is 31.13 inches.

SUNNY

# HASTINGS

NEW ZEALAND

SOUTHERN APPROACH  
TO HASTINGS

## INTRODUCTION

Hastings, one of the largest provincial towns in New Zealand, is situated in Hawkes Bay, a few miles from the East Coast of the North Island.

Less than seventy-five years ago it began its organized administration with the election of its first Town Board. Since this step in local Government the population has grown considerably. While this may be due in part to the wisdom of a series of prudent administrators, the district owes its consistent progress to the rich endowments of mother nature.

Blessed with a glorious climate and centering a richly fertile district, Hastings has proved one of the most productive areas in a country renowned for the wealth of its agricultural production.

This Booklet is designed to portray for its readers the extensive activities of the Hastings district in which the full volume and variety of production has yet to be developed and which is destined to become the inland commercial base of one of New Zealand's richest districts.

# HASTINGS

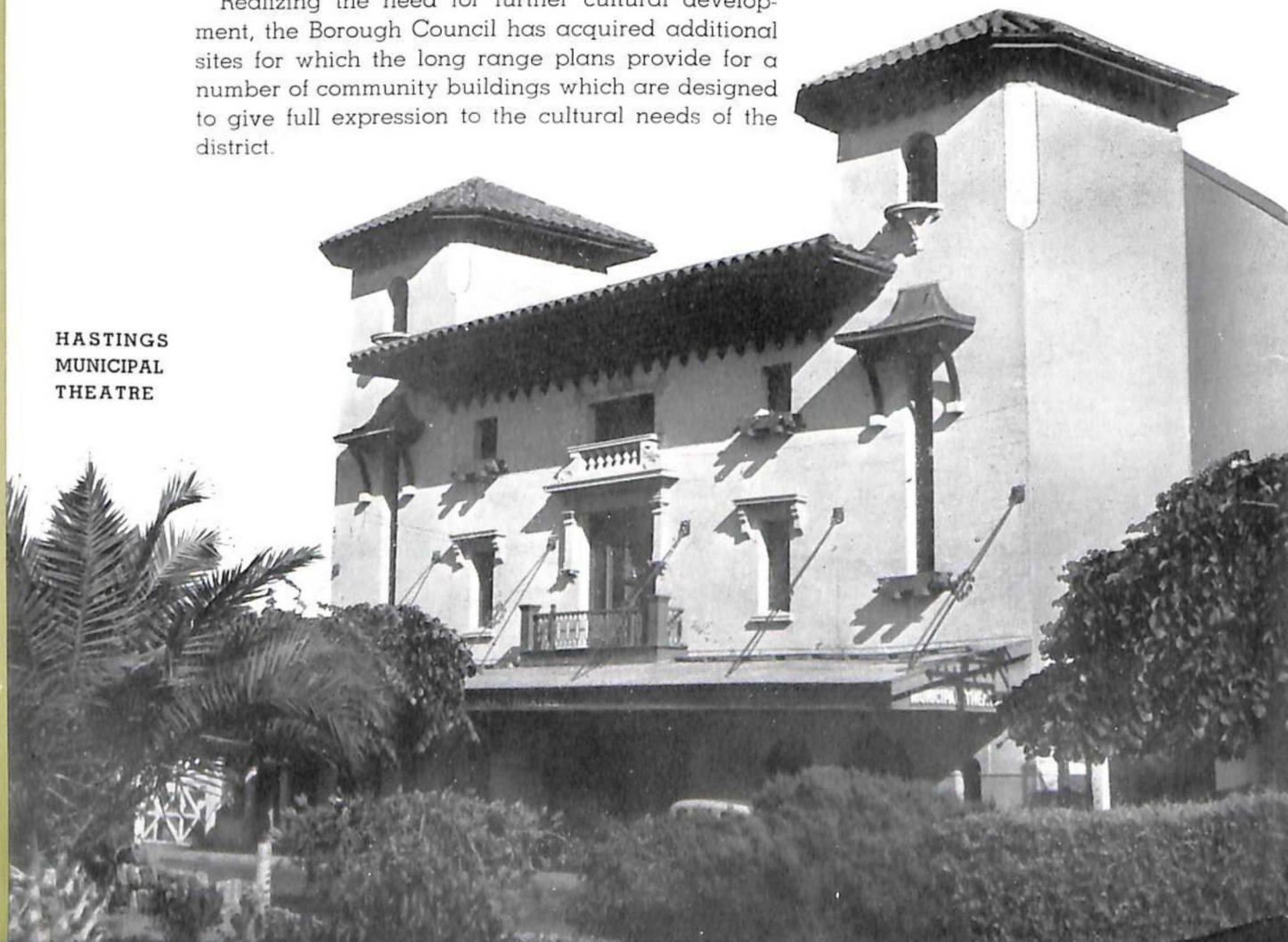
## BOROUGH AMENITIES

Hastings is a modern and progressive town, primarily because it serves such a wealthy rural district. One hundred years ago it knew only the Maori, a missionary or two and a few isolated settlers. It has steadily grown, until to-day, it provides business and civic amenities, which, by virtue of comparatively recent development, compare more than favourably with those of any town of its size.

The civic authorities have provided one of the largest and best appointed theatres in the Southern Hemisphere. Of Spanish Mission architecture, it has a seating capacity of 1,350. In the same block of buildings, a well-designed and modern Assembly Hall, with a special spring floor for dancing, provides seating for 800. Below the Assembly Hall the Municipal Library, with 17,000 books, provides subscribers with extensive reading at a nominal annual subscription.

Realizing the need for further cultural development, the Borough Council has acquired additional sites for which the long range plans provide for a number of community buildings which are designed to give full expression to the cultural needs of the district.

HASTINGS  
MUNICIPAL  
THEATRE





# PUBLIC BUILDINGS

## HASTINGS

The Post Office is an example of the type of modern building being provided in Hastings by the New Zealand Government. It indicates the extent of the Government's confidence in the future of this district. The demands from all parts of New Zealand for the expansion of Government buildings have increased considerably in recent years. Hastings, however, has been singularly fortunate.

The Agricultural Department and the District Public Trust share an imposing building with spacious offices. The Marketing Department with refrigerating chambers, assembly, grading and packing floors for fruit and vegetables, covers an area of one and a half acres. Other Government Offices include the Social Security, National Employment Service and Police Departments. The Hawkes Bay Electric Power Board, with its headquarters in Hastings, has built magnificent, modern offices, demonstration and show-rooms.

Leading New Zealand business houses have acquired sites and prepared plans for extensive buildings, while many local firms await only the necessary building materials before carrying out considerable extensions.



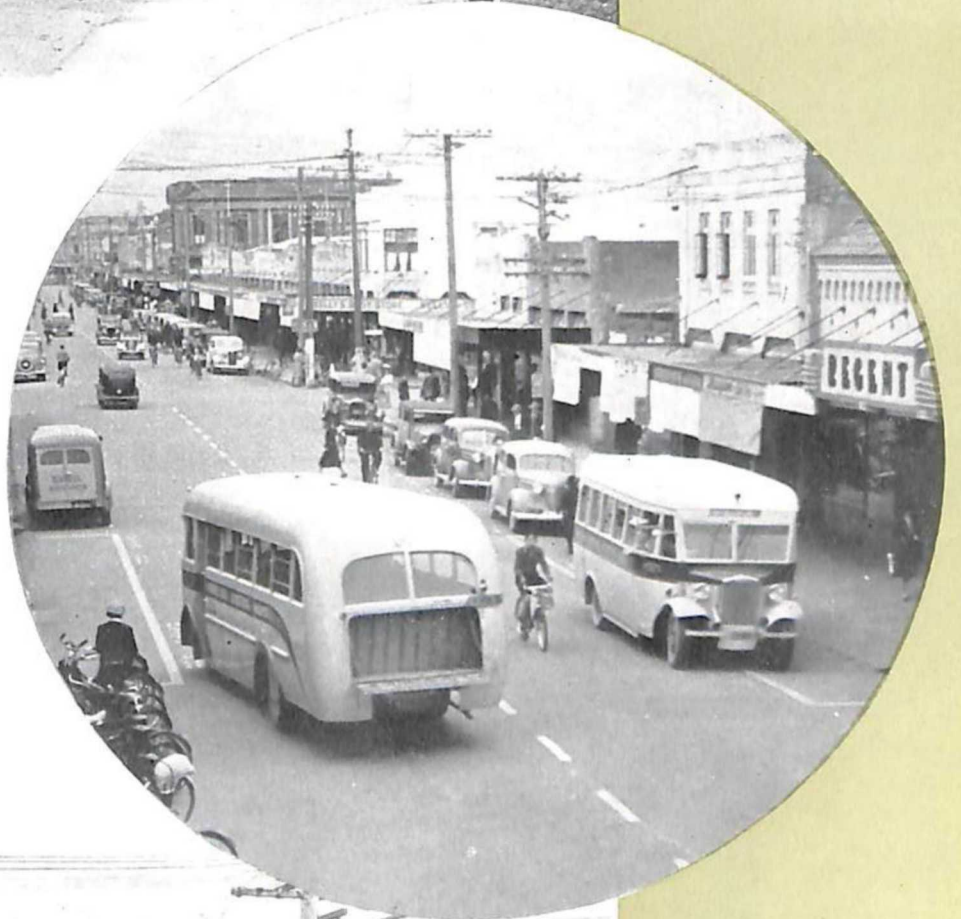
THE POST OFFICE  
HASTINGS

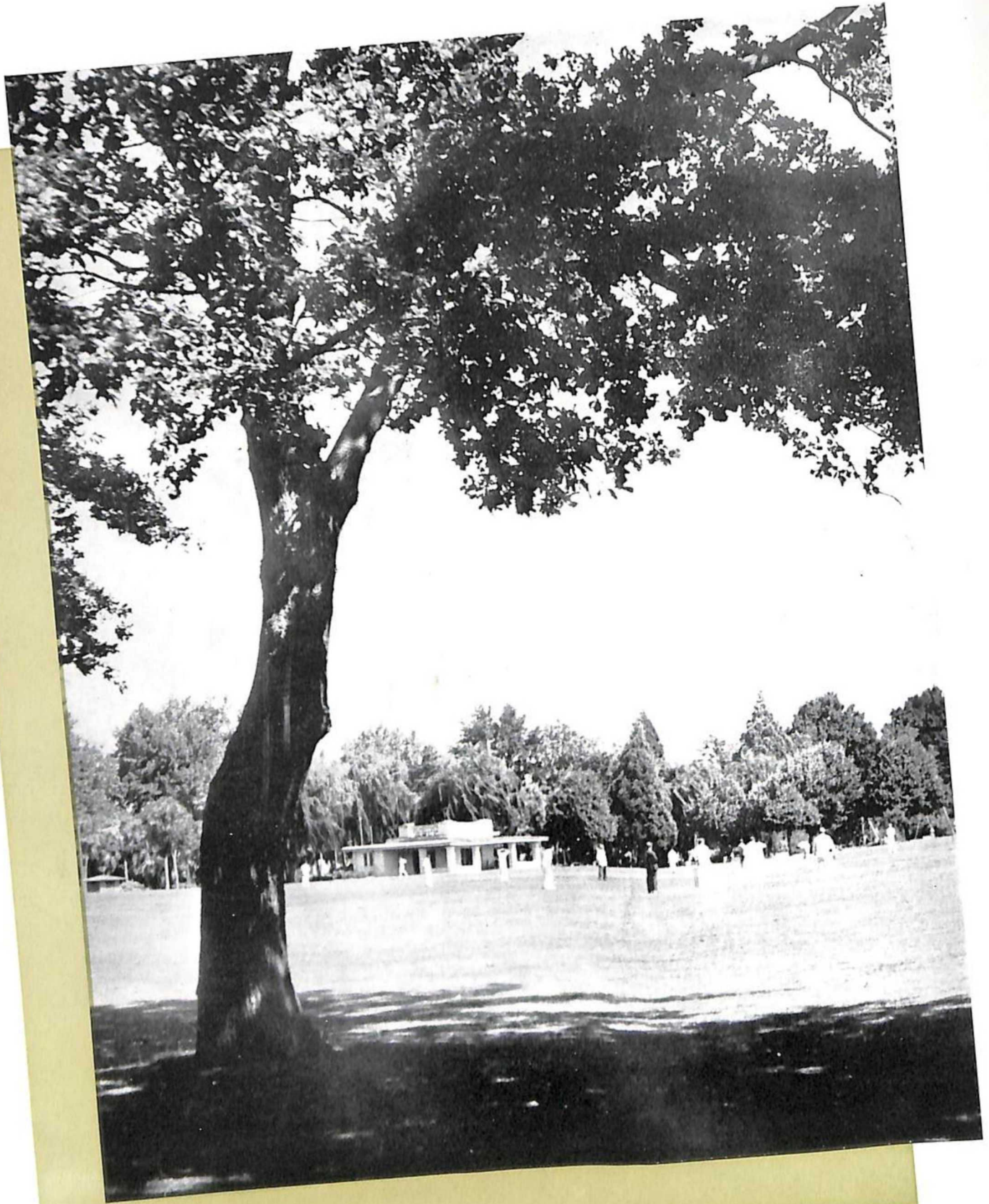


SOME

# HASTINGS

SHOPPING  
AREAS





CRICKET AT CORNWALL PARK



# PARKS & RESERVES . . .



CORNWALL PARK

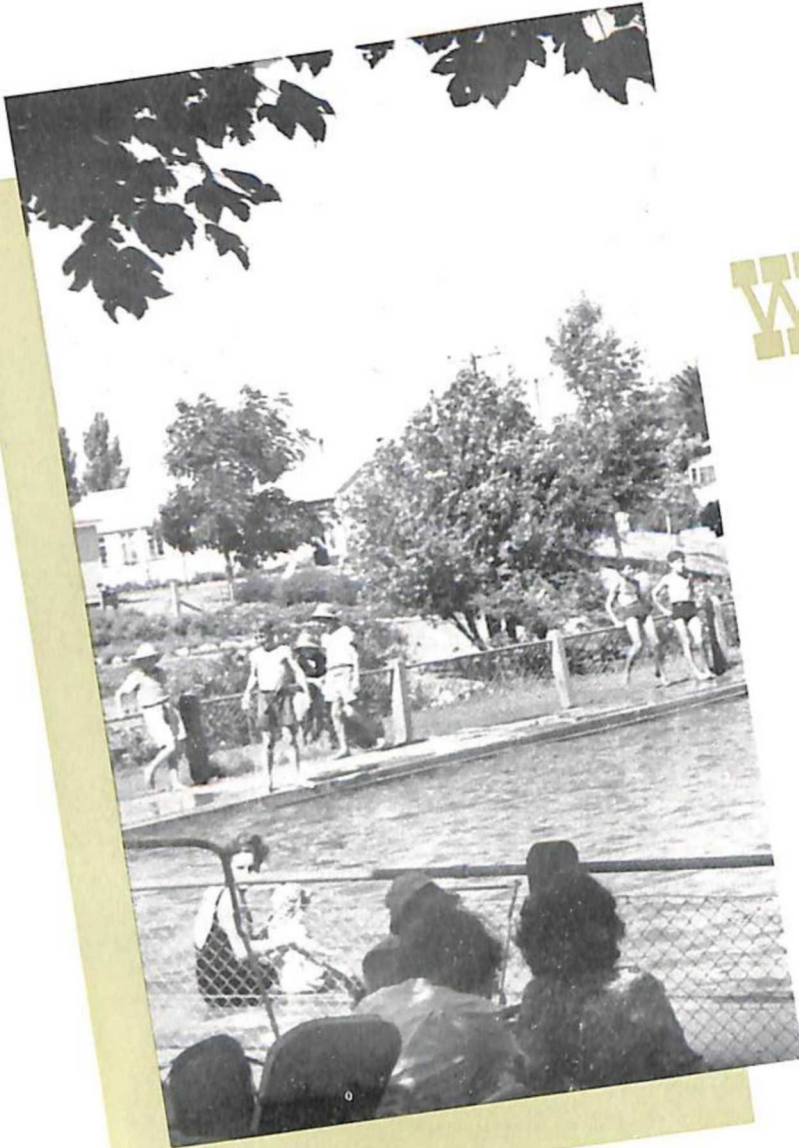
In its 104 acres of parks and reserves the Hastings Borough Council provides a number of areas which, for nominal annual charges, are available for many branches of sport including cricket, football and hockey. In accordance with modern trends in town planning, the Council continues to acquire land to develop into recreational areas for its residents.

The sum of £39,000 has been set aside for the extension of the main sports ground with provision for adequate stands and gymnasium. Successive Councils have shown a continuity of progressive policy in increasing the civic amenities of Hastings. Additional parks and reserves are being developed to meet the future needs of the town. A highly qualified Superintendent of Reserves is responsible for maintenance and development work under the general direction of the Borough Council.

# WINDSOR PARK

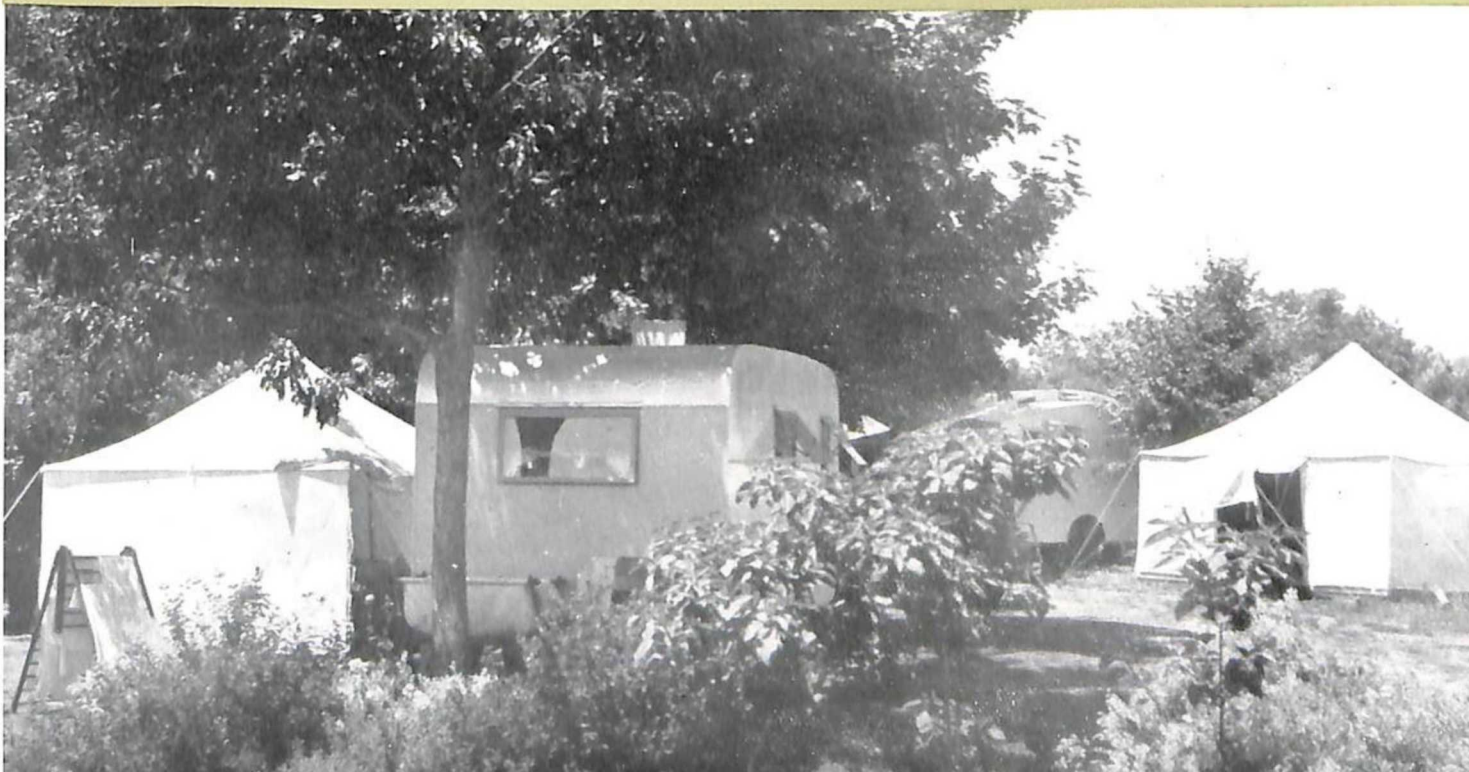
## MOTOR CAMP

The motorists' camping ground is at Windsor Park, an area of 51¼ acres where the campers' needs are adequately provided for. The camp has been described by visitors as the best in New Zealand and certainly the local authority has chosen and developed a most attractive site in an environment of beautiful, shady trees.





The camp warden is in permanent residence to assist the campers. In addition to providing hot water at all times, the warden allocates sites and supervises the community kitchen, dining-rooms, laundries and hot and cold showers. An open air swimming bath has proved most popular, while the paddling pool and canoes on safe, shallow waters are the children's delight. Every effort has been made to cater for the comfort and enjoyment of visitors. The camp is constantly being extended to meet the demands of campers, whose numbers increase each year.



# SOME HASTINGS RESIDENCES



AREA - 1 ROOD 14 PERCHES    RATES £11 2s. 6d.  
LOCATION - 68 CHAINS FROM POST OFFICE

AREA - 36 PERCHES                    RATES £9 3s. 7d.  
LOCATION - 42 CHAINS FROM POST OFFICE



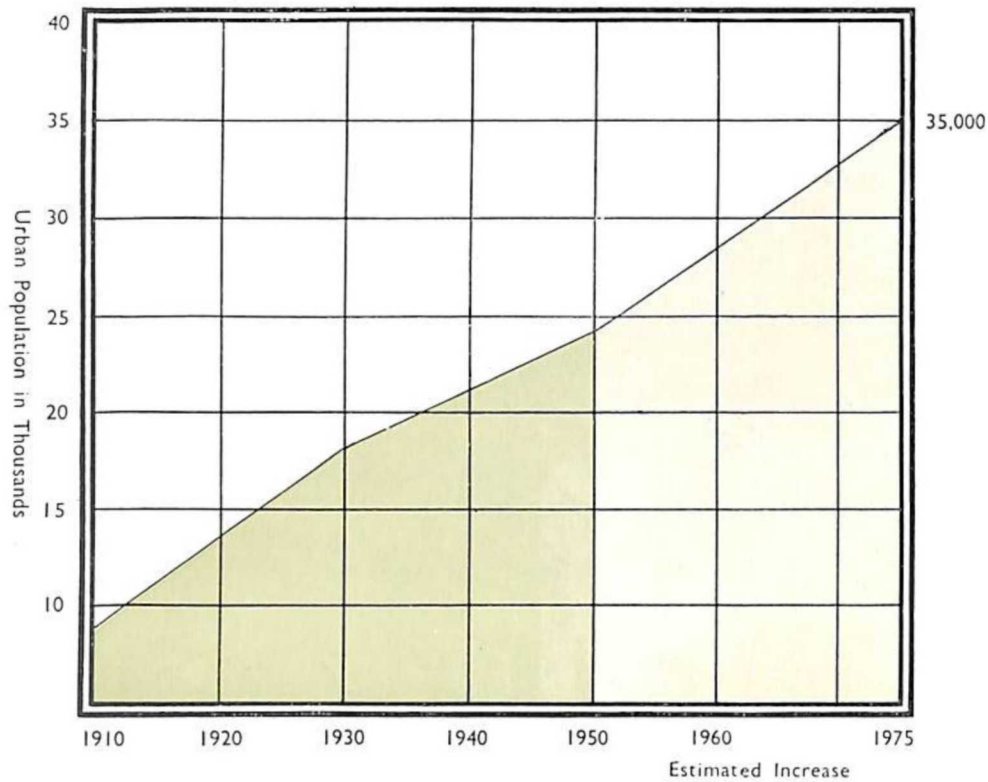


● AREA - 32 PERCHES      RATES £11 2s. 6d.  
LOCATION - 60 CHAINS FROM POST OFFICE

● AREA -  $\frac{1}{2}$  ACRE      RATES £26 8s. 5d.  
LOCATION - 46 CHAINS FROM POST OFFICE



## HASTINGS POPULATION INCREASES



With a steady increase in population during the past forty years it is significant that the estimated increase is based on a statistical analysis published by the New Zealand Government. The analysis shows Hastings as one of four provincial towns in New Zealand for which the greatest population increase is predicted.

## PURITY OF WATER SUPPLY

ANALYSIS (Results expressed in parts per 100,000) :

|  |   |   |   |   |   |   |   |   |   |                                   |
|--|---|---|---|---|---|---|---|---|---|-----------------------------------|
| Smell when heated to 100° F.                     | - | - | - | - | - | - | - | - | - | Nil                               |
| Chlorine in chlorides                            | - | - | - | - | - | - | - | - | - | 1.60                              |
| Nitrogen in nitrates                             | - | - | - | - | - | - | - | - | - | 0.066                             |
| Ammoniacal nitrogen from free and saline ammonia | - | - | - | - | - | - | - | - | - | 0.0004                            |
| Nitrogen in nitrites                             | - | - | - | - | - | - | - | - | - | Nil                               |
| Albuminoid nitrogen                              | - | - | - | - | - | - | - | - | - | 0.0009                            |
| Oxygen absorbed in four hours at 80° F.          | - | - | - | - | - | - | - | - | - | Nil                               |
| Total Solids                                     | - | - | - | - | - | - | - | - | - | 14.5                              |
| HARDNESS (Expressed in grains per gal.) :        |   |   |   |   |   |   |   |   |   |                                   |
| Temporary  | - | - | - | - | - | - | - | - | - | 6.0                               |
| Permanent  | - | - | - | - | - | - | - | - | - | Nil                               |
| Deposit  | - | - | - | - | - | - | - | - | - | Minute Siliceous<br>one protozoa. |

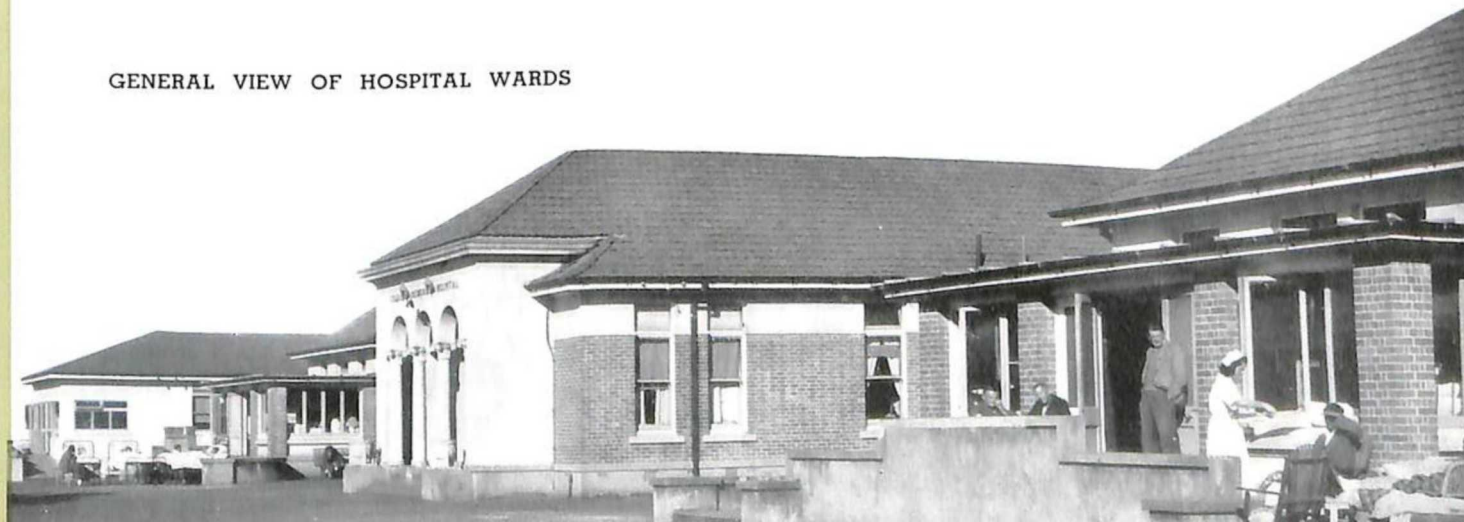


HASTINGS SOLDIERS'  
MEMORIAL HOSPITAL

# MEDICAL SERVICES

The Hastings Soldiers' Memorial Hospital was built in 1928 as a memorial to those men of the Hastings District who lost their lives in the first World War. The money was raised by public subscription and a bequest of £35,000 from the late Miss Kelly. With 103 beds in the general wards, and an excellent maternity section of seventeen beds, the hospital is administered by the Hawkes Bay Hospital Board. The Board has carried out an extensive programme of development work until the hospital is now regarded as one of the most modern in New Zealand.

GENERAL VIEW OF HOSPITAL WARDS





AERIAL VIEWS OF HASTINGS BUSINESS AREA



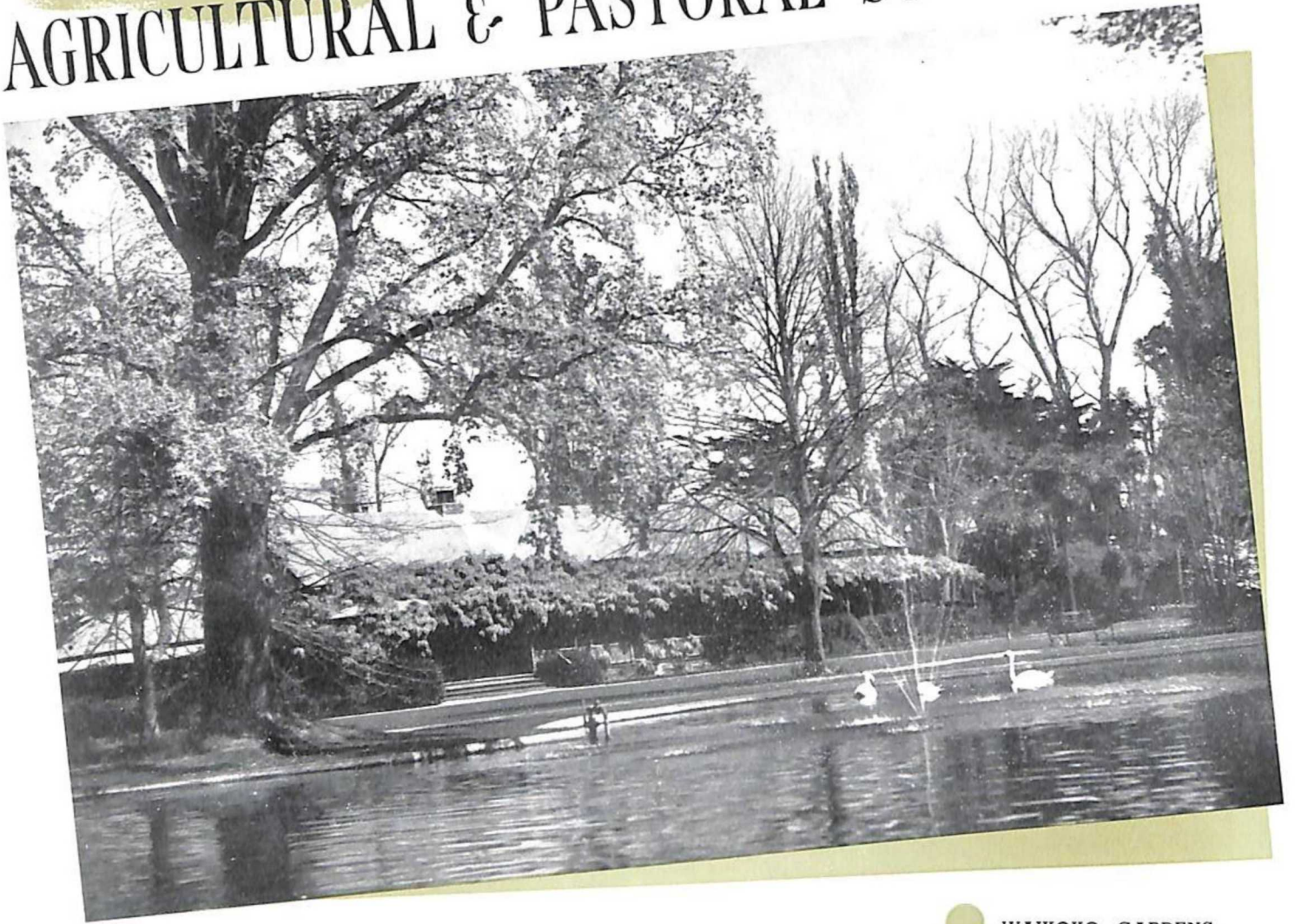




AERIAL VIEWS OF HASTINGS BUSINESS AREA



# HAWKE'S BAY AGRICULTURAL & PASTORAL SOCIETY

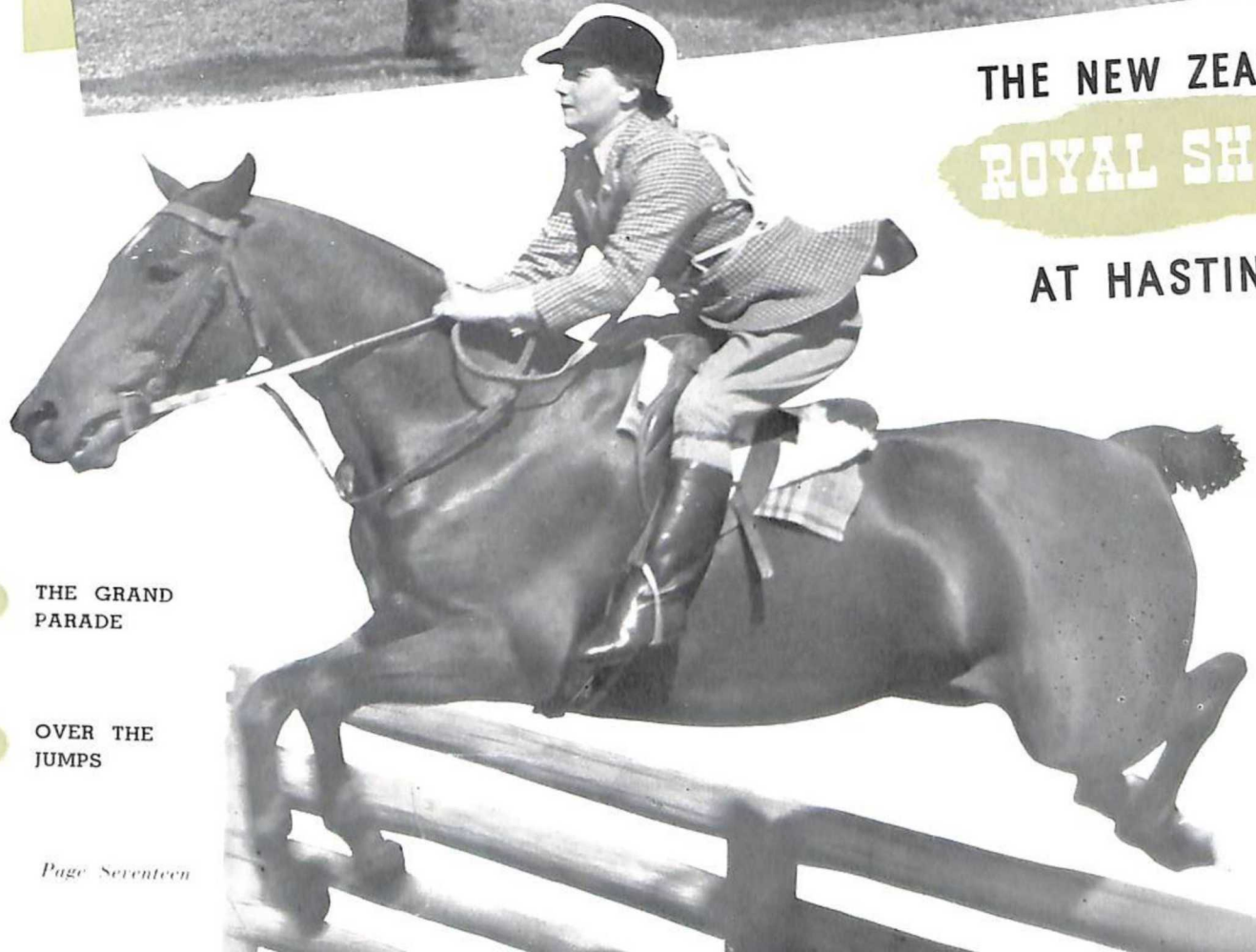


● WAIKOKO GARDENS

The Hawkes Bay Agricultural and Pastoral Society's Show Grounds of 129 acres are on the boundary of Hastings. They are regarded as being unsurpassed by any show ground in New Zealand. The Society holds two shows, a Spring Show in October and an Autumn Show in March of each year. In addition the Hawkes Bay annual ram fair is held at the show grounds late in January. The Society has a membership of 4,000. The Spring Show is one of the social events of the year. The second day is known as "People's Day" and is marked by the closing of all businesses in this district. Attendance at the show is usually in the vicinity of 30,000 people.



THE NEW ZEALAND  
**ROYAL SHOW**  
AT HASTINGS



● THE GRAND  
PARADE

● OVER THE  
JUMPS



# SHEEP

The early settlers in the Hastings District realized the perfection of both soil and climate for sheep-farming. They were interested primarily in the production of wool and chose the neighbouring limestone foothills for their pastoral activities. They were proud of the quality and quantity of their wool.



PERFECT CONDITIONS FOR SHEEP-FARMING



Real prosperity came, however, with the advent of refrigeration. With modifications in breeding it was found that the extremely rich and fertile plains, on which Hastings is situated, produced the succulent feed on which stock, not only thrive well, but fatten to perfection. With the keen demand for New Zealand meat it was not long before two of the largest meat killing and freezing works in New Zealand were established close to Hastings.

The quality of New Zealand lamb and mutton is proclaimed throughout the world. What is not generally known is that the best of this meat comes from the Hastings district where climate, soil and good husbandry enable more sheep to be fattened, and more to be carried to the acre, than any other district in New Zealand.



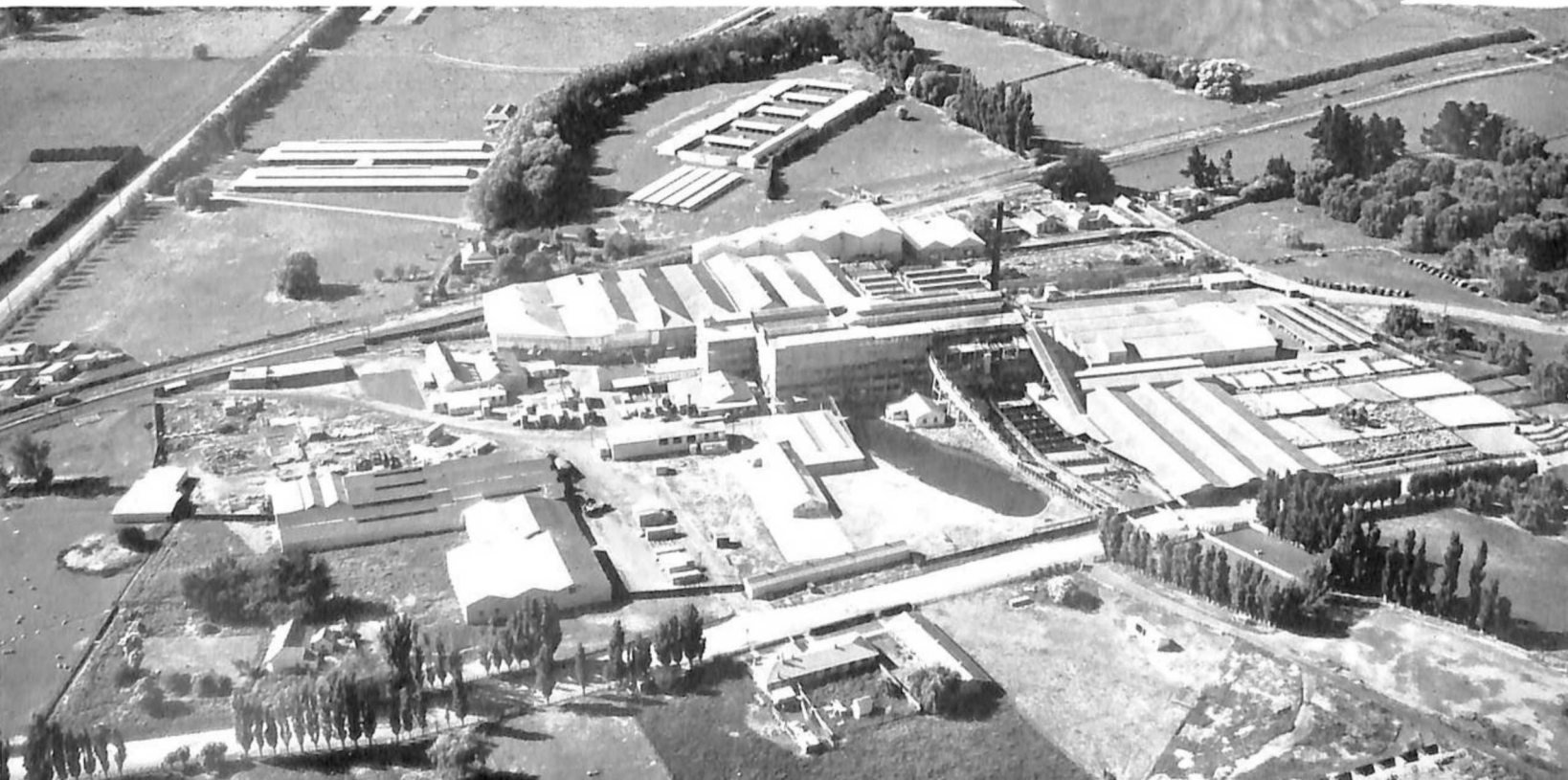
"MOTHER AND CHILD"

THE DROVER PAUSES. HIS WOOLLY CHARGES AMBLE THEIR WAY TO FRESH PASTURES

# LAMB FOR BRITAIN



HASTINGS' MEAT WORKS KILL TO EXPORT OVER 100,000,000 lbs. ANNUALLY OF FINEST LAMB AND MUTTON. DURING THE SEASON DAILY KILLINGS IN THE TWO WORKS EXCEED 26,000 LAMBS



# THE GOLDEN FLEECE



PROSPERITY DEPENDS LARGELY ON WOOL

Of 45 million lbs. of wool produced in the Hawkes Bay Province, it is estimated that 21 million lbs. at least, are produced in the Hastings district. Five of the six woolbroking firms operating in the Province, too, have their head offices in Hastings. Wool sales are held in the Hawkes Bay Province each year, when buyers from all parts of the world bid for the local clip, which is regarded as being among the finest crossbred wool in the world.

MACHINE CLIPPERS HAVE SUPERSEDED THE SHEARS

# BEEF FOR BRITAIN

For many years cattle were grazed chiefly to break in the pastures. They kept grazing in good order for sheep. To-day, however, with a large export trade in chilled beef, far more attention is given to cattle breeding. Some of the world's best pedigree stock has been imported, principally from Great Britain, to build up local herds. British breeds of cattle are fattened on the rich pastures of the Heretaunga Plains on which they reach that prime condition which is the butchers' dream. The killings of cattle and veal at the two Hastings meat works last year totalled 74,000 carcasses.



BEEF READY  
FOR EXPORT

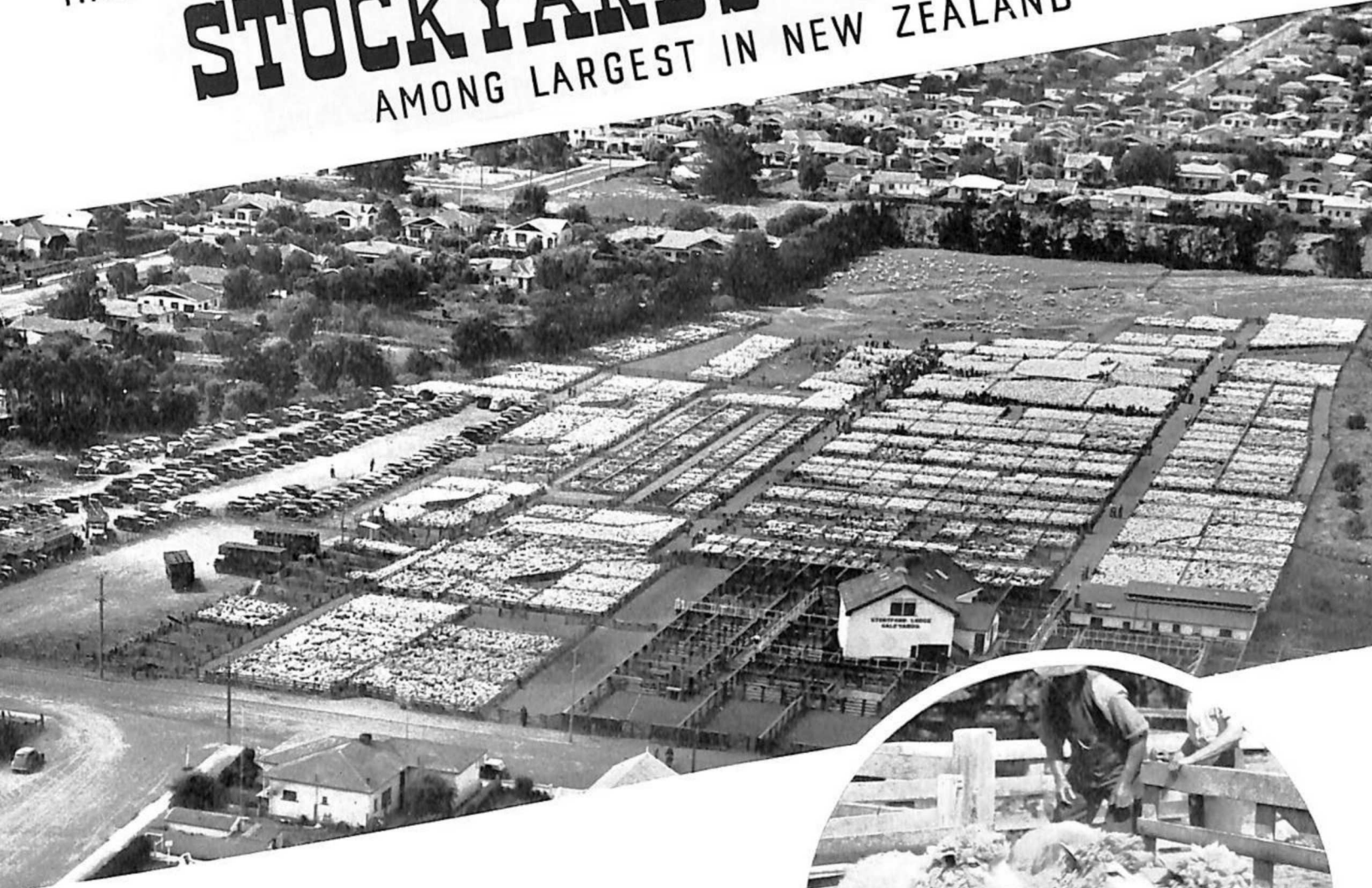
CHAMPION SIRE  
OF HASTINGS  
DISTRICT CATTLE



HASTINGS

# STOCKYARDS

AMONG LARGEST IN NEW ZEALAND

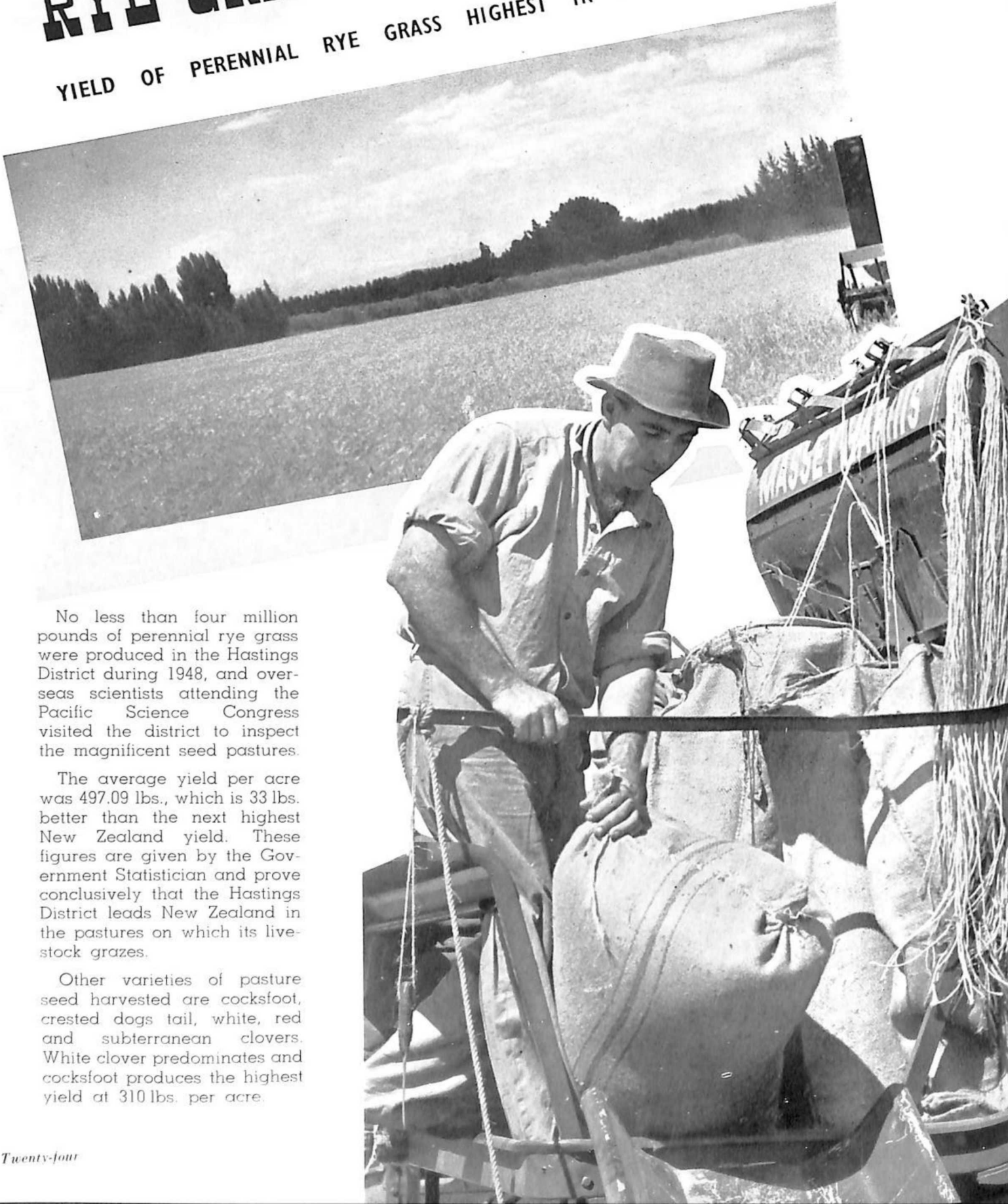


It is claimed that more livestock is sold yearly at the Hastings saleyards than at any other centre in New Zealand. While this may be regarded as an indication of the extent of the farming activities of the district it is of little importance as compared with the tremendous increase in sales of livestock during the past thirty years.

STOCKFORD LODGE STOCKYARDS  
FROM THE AIR (50,000 SHEEP  
AT THE HASTINGS EWE FAIR)

# RYE GRASS

YIELD OF PERENNIAL RYE GRASS HIGHEST IN NEW ZEALAND



No less than four million pounds of perennial rye grass were produced in the Hastings District during 1948, and overseas scientists attending the Pacific Science Congress visited the district to inspect the magnificent seed pastures.

The average yield per acre was 497.09 lbs., which is 33 lbs. better than the next highest New Zealand yield. These figures are given by the Government Statistician and prove conclusively that the Hastings District leads New Zealand in the pastures on which its livestock grazes.

Other varieties of pasture seed harvested are cocksfoot, crested dogs tail, white, red and subterranean clovers. White clover predominates and cocksfoot produces the highest yield at 310 lbs. per acre.

# DAIRYFARMING



DAIRYFARMING IN THE  
HASTINGS DISTRICT

Hastings is not essentially a dairying district, nevertheless, some 2,000 farmers supply their co-operatively owned Dairy Company with cream for butter making. There are comparatively few areas, however, given solely to dairying. Nearly all farmers carry a few milking cows to provide their domestic needs and surplus cream only is sent to the Factory. The total output of butter varies considerably with the seasons. The average yearly production is approximately 1,200 tons, of which half is exported to Britain.

# FRUIT

## HASTINGS LEADS NEW ZEALAND YIELDS



Average Yield per Tree in Bushels.

|                 | Apples.     | Pears.      | Peaches.    |
|-----------------|-------------|-------------|-------------|
| <b>HASTINGS</b> | <b>4.75</b> | <b>2.56</b> | <b>1.88</b> |
| Gisborne        | 2.89        | 1.85        | 1.57        |
| Nelson          | 2.77        | 2.09        | .93         |
| Auckland        | 1.63        | 1.59        | .81         |
| Canterbury      | .81         | 1.08        | .4          |
| Otago           | 1.53        | 1.69        | 1.48        |



TREE-RIPENED APPLES  
LUSCIOUS, JUICY  
AND SUN-KISSED



A HASTINGS ORCHARD  
FROM THE AIR

Hastings is one of the largest fruit producing districts in New Zealand. It is significant, too, that the average yield of apple and pear trees is greater than in any other district in New Zealand.

The phenomenal yield of the fruit trees, the stability of organized marketing and the establishment of a large cannery have been responsible for a great increase in the number of commercial fruit growers and there is a keen demand for land for orchard areas.

One and a quarter million bushels of first grade fruit are harvested each year. The varieties most popular are apples, pears and peaches. Other varieties which are grown in increasing quantities are plums, quinces, nectarines, cherries and citrus fruits.

# PROCESSING

## FRUIT & VEGETABLES

The growth of the Hastings canning and jam making industry in the short period of twelve years has been truly amazing. Beginning in 1936, with the pulping of fruit for jam factories in other parts of New Zealand, the industry has now grown to such an extent that total production runs into millions of cans of fruit, vegetables and jam. The seasonal staff employed is approximately 500, all of whom earn excellent wages and work under ideal conditions.

The Hastings cannery has become the largest in New Zealand and its intake of fruit and vegetables has given great impetus to these primary industries. The production of peaches and pears has increased to 250,000 and 140,000 bushels respectively.

Small fruits, too, are being grown in increasing quantities. Hastings is now the second largest New Zealand producer of these fruits, with the current season's crop expected to approach 4,000 cwt.

### **Market Gardening Prospers :**

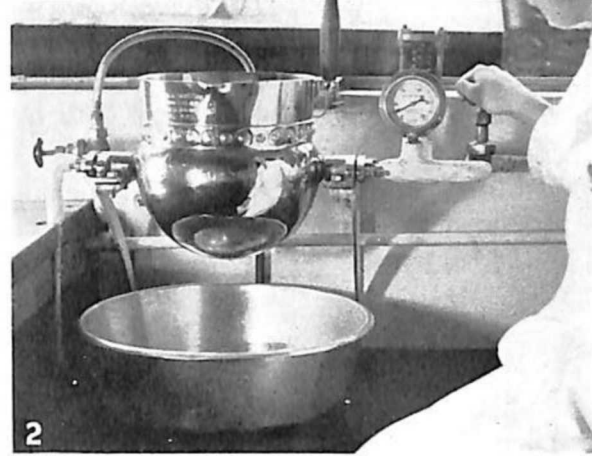
The cannery uses also large quantities of tomatoes, asparagus and beans, the processing of which produces an article of exceptionally high quality. The total vegetable production now approaches 20,000 tons per annum from an area of approximately 4,000 acres.

PART OF THE LARGEST FRUIT  
CANNERY IN NEW ZEALAND





1. AUTOMATIC  
CONVEYOR FOR  
HARVESTED  
PEAS



2. CHEMIST  
CHECKS CAN-  
NING PROCESS



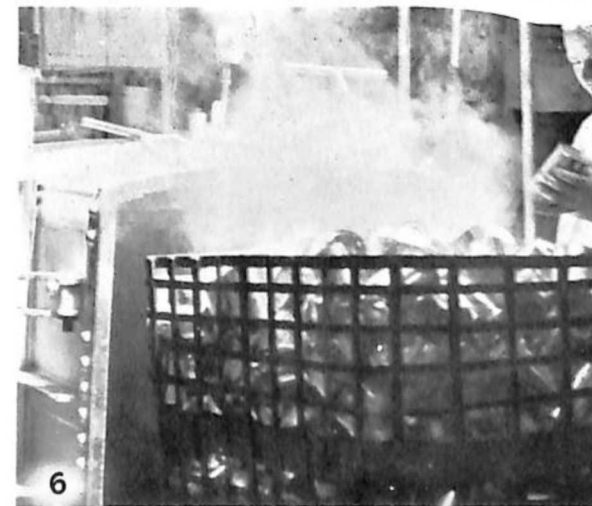
3. PEA VINES  
FOR THE THRESH-  
ING MACHINE  
(VINER)



4. FILLING CANS  
FROM THE  
MECHANICAL  
HOPPER



5. GRADING  
SHELLED PEAS  
FOR WASHING

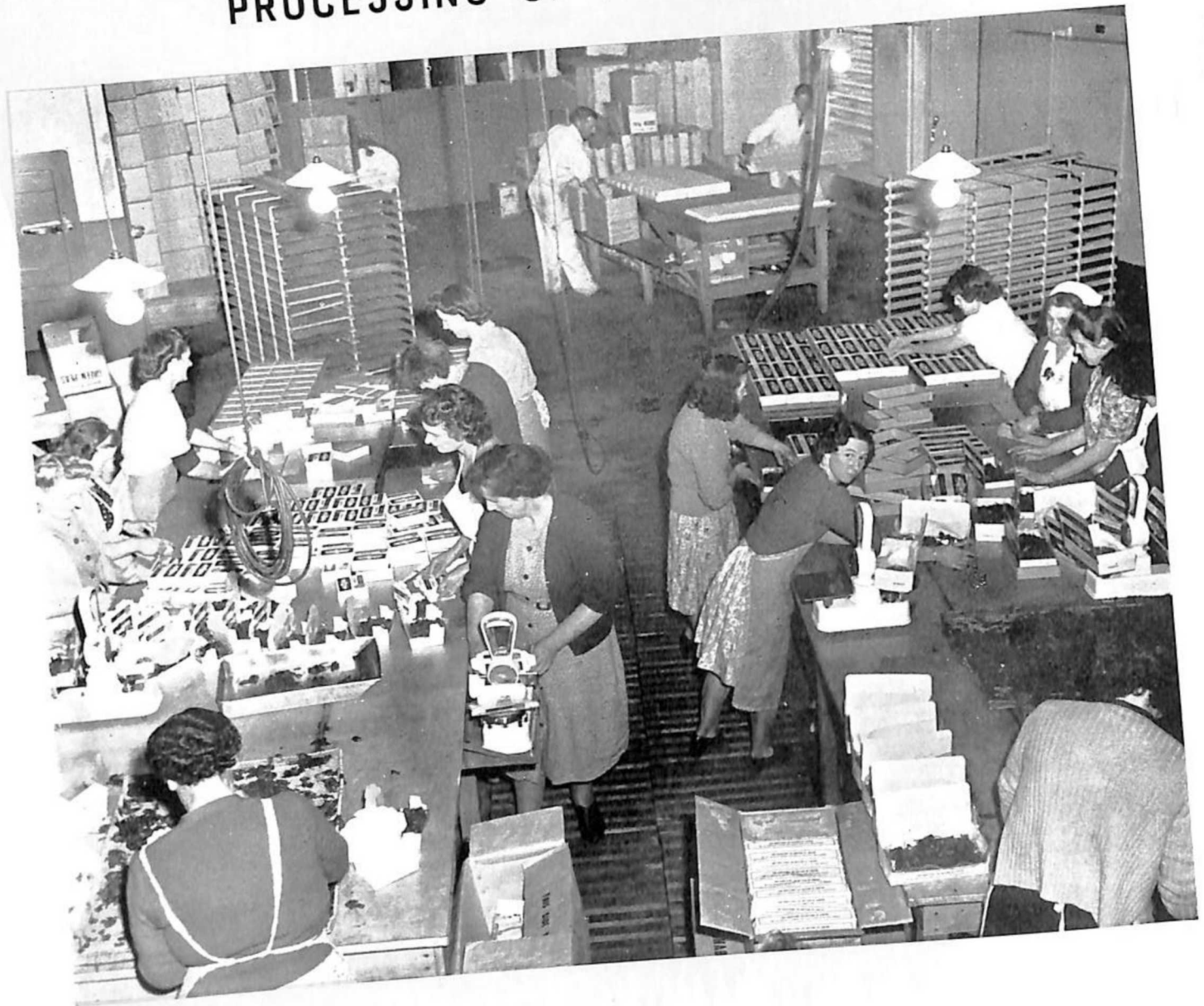


6. CANNED PEAS  
FROM STEAM  
PRESSURE OVEN

# CANNING PEAS IN THE LARGEST FRUIT CANNERY IN NEW ZEALAND

# QUICK FREEZE

## PROCESSING OF FRUIT & VEGETABLES



The quick freezing of fruit and vegetables, which are stored in refrigerating space for winter sale, is a new industry which is making great progress. The Company works under the same roof and in close co-operation with the local cannery. The quick freezing of fresh food has proved increasingly popular and there can be no doubt that this industry promises to be an added boon to local growers.



# SMALL FRUITS FOR JAM



MODERN METHODS  
OF RASPBERRY CULTURE  
USING ARTESIAN  
WATER

RASPBERRY PICKING

LUSCIOUS

# CHEERRIES

FOR NEW ZEALAND MARKETS

● The Hastings district is one of the few centres in which cherries are grown commercially for markets throughout New Zealand.



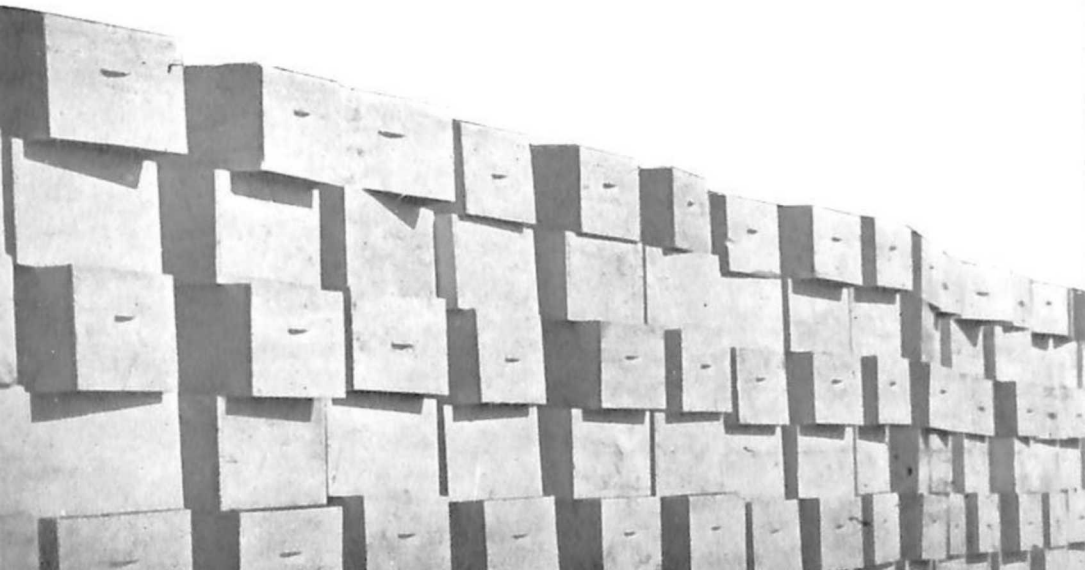
FORBIDDEN FRUIT!



THE APIARIST "TENDS HIS FLOCK"

# HONEY

With such a large area of orchards it is to be expected that the apiarist would be attracted to the Hastings district. His presence, too, is encouraged by the orchardist, for his bees perform the vital task of fertilising the fruit blossom. The apiarists have increased in number with the growth of the fruit industry. They have formed a strong local Association, and are assisted in their work by instructors of the Department of Agriculture. A large proportion of the provincial output of nearly 1,000,000 lbs. of honey annually, is produced in the Hastings district.



# WINE

PRODUCED IN HASTINGS

For many years local vintners have been producing wine which finds extensive markets throughout New Zealand. Vineyards on the lower slopes of the Havelock Hills were established commercially over sixty years ago. They have produced good crops which have matured into lighter wines of excellent vintage.

Recently, a large firm of Australian vintners, after exhaustive investigation of conditions for viticulture in New Zealand, chose the Hastings district for the acquisition of a large area which has been planted with special wine grapes.

Table grapes, too, are grown in sheltered positions for New Zealand markets. The total crop does not exceed 650 tons, but a number of young vineyards have yet to reach maturity.

A VINEYARD IN THE  
HASTINGS DISTRICT



THE

# KIWI



KIWIS AT ACCLIMATISATION  
SOCIETY'S GAME FARM,  
GREENMEADOWS, NEAR  
HASTINGS



The most curious of all living birds, the kiwi, has some remarkable attributes. Its nostrils are in the tip of its long bill, its wings are mere vestigial remnants, and its plumage is hairlike. It has whiskers! The female lays an egg that is absurdly large for a bird about the size of a domestic fowl. The male kiwi hatches the eggs.

# RACING

## THE HAWKES BAY JOCKEY CLUB



Hastings is recognised as one of the chief racing centres of New Zealand. It is one of the few districts in which the racecourse is situated in the heart of the town. In an area of eighty-four acres, the Hawkes Bay Jockey Club has one of the finest racecourses and training areas in the Dominion, with seating accommodation in imposing stands which, next to the main centres, are easily the best in New Zealand. The Hawkes Bay Jockey Club was formed in 1874 and nine years later fostered the formation of the New Zealand Racing Association from which has grown the New Zealand Racing Conference. Many of New Zealand's famous racehorses have been trained at Hastings, while local owners and trainers have a great record of success in Australia. In the district, too, are some of New Zealand's most prominent studs (enriched with imported bloodstock from Great Britain) which have been responsible for the breeding of some of the best horses in the history of New Zealand racing.



THE

HUNT

## CLUB . . . . HAWKES BAY

The Hunt Club's kennels are situated at Paki Paki, a few miles from Hastings. The pack is made up of over twenty couples of harrier hounds. The original couples were imported from the best harrier packs in England and from time to time the high standard of the pack is maintained with additional importations. During the season the Club holds two hunts each week in various parts of the Hawkes Bay province, which is regarded as good hunting country.



THE MEMBERS OF THE HUNT RIDE TO HOUNDS  
—THEIR QUARRY THE FLEET-FOOTED HARE

POLO

## THE HAWKE'S BAY POLO CLUB . . . .

Hawkes Bay has been the stronghold of polo for the past fifty years. The Polo Club was established in 1892 and has prospered since its inception. The Club has its own grounds, on the outskirts of Hastings, and its members own some of the finest polo ponies in New Zealand. The Club has a great record in tournaments and proudly boasts that, with the exception of the war years, it has never missed a season's play.



OAK AVENUE. NEAR HASTINGS

# SCENIC ATTRACTIONS

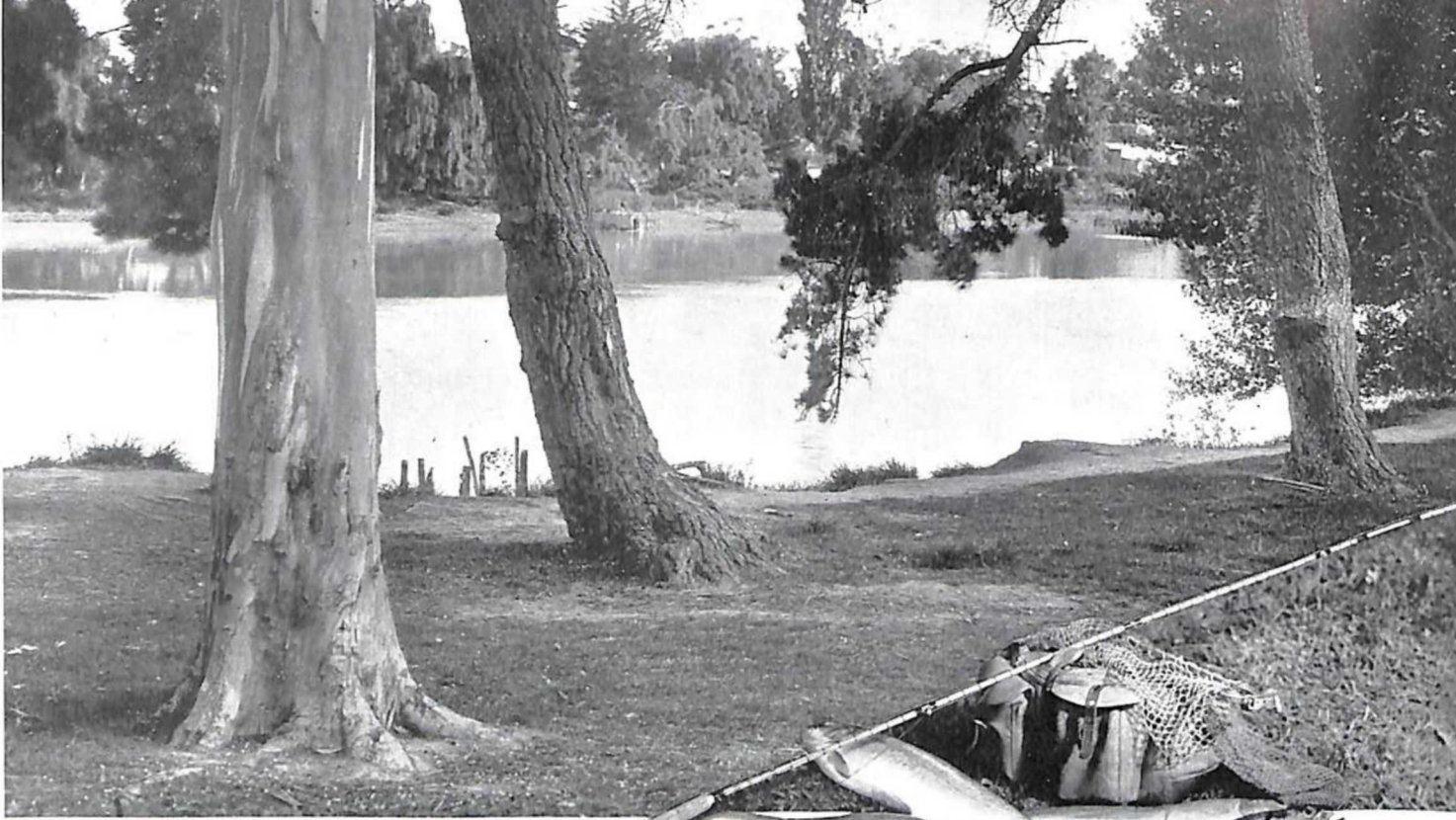
The rich and fertile Heretaunga Plain on which Hastings is situated, affords a prospect of the Ruahine and other ranges to the distant west and of high hills to the east. The landscape is nowhere unbroken and, as elsewhere in New Zealand where low-lying clouds do not persist, the atmosphere is remarkable for its crystal clarity. The surroundings of Hastings have a pleasant rural quality—smiling farms, orchards and vineyards. In various places hedgerows and avenues of poplars or oaks are suggestive of an English countryside. There are ample opportunities for recreation in the district and the scene, whether one of natural or cultivated beauty, is everywhere charming.





HAVELOCK HILLS, TE MATA PEAK (1,310 ft.)

A few miles to the east of Hastings is the elevated ridge known as Havelock Hills. The inclined rock strata give them a somewhat unusual outline and their appearance is at once interesting and beautiful. The hills have a profile that the old time Maori likened to a recumbent giant and there are legends concerning his redoubtable exploits. A road leads to the summit of Te Mata Peak and from this eminence there is a magnificent cyclorama of the spreading plains, the rolling downs, the distant mountainous backbone of the island and of the noble sweep of Hawkes Bay.



# FISHING

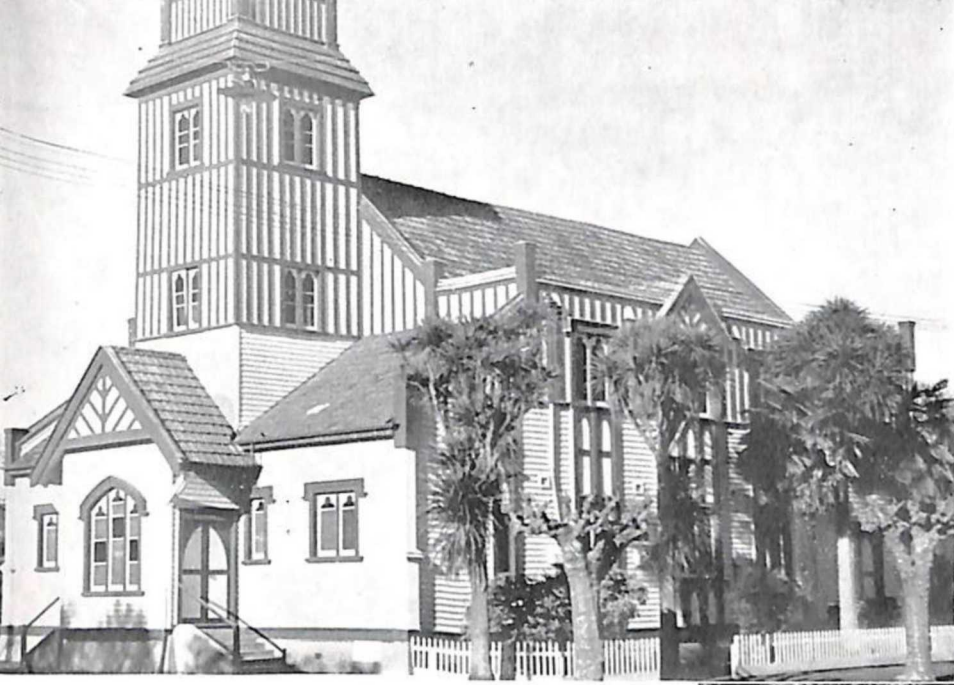
New Zealand is justly renowned for the excellent fighting qualities and size of its rainbow trout. While local rivers do not provide fish of the size of those magnificent specimens of Taupo and Rotorua, nevertheless, they are well stocked and judged by overseas standards, provide excellent sport with trout weighing up to 5 and 6 lbs. The clear mountain rivers—the Tuki Tuki, Tutaeakuri and Ngaruroro—are the most popular, and wading is comparatively easy. Fish are caught chiefly on the feathered lure and minnow, but success has been achieved and some excellent fish caught on the dry fly.

## SHOOTING

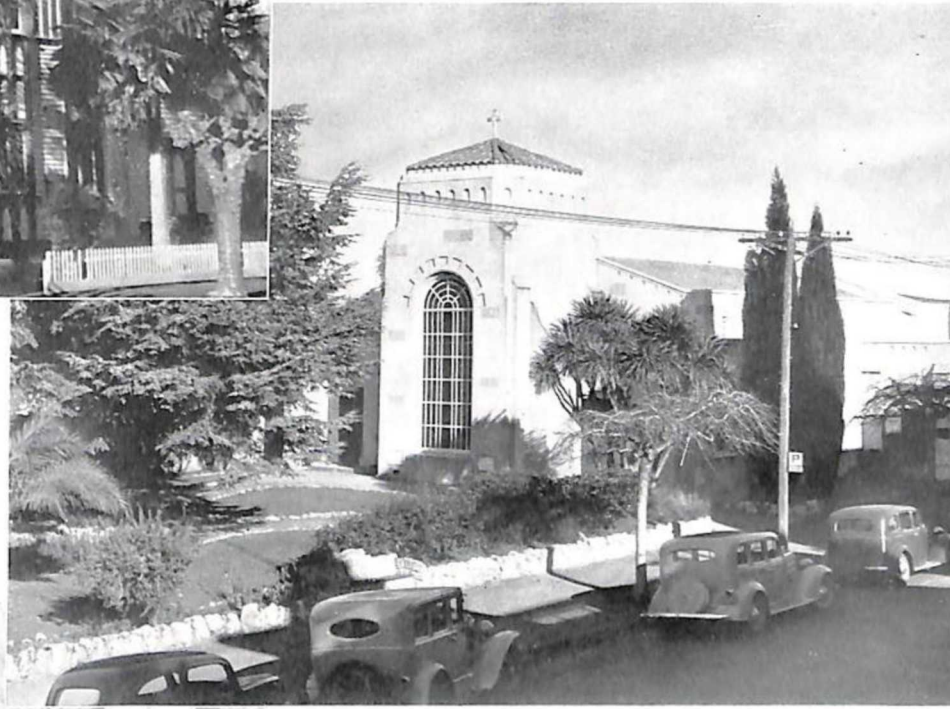


The opening of the shooting season varies, but it is usually restricted to the month of May. Local rivers and lakes provide excellent sport with a variety of duck and swan. Californian quail are available in large quantities, while limited bags of pheasant, also, are taken.

# SOME HASTINGS CHURCHES



● ST. ANDREW'S  
PRESBYTERIAN CHURCH

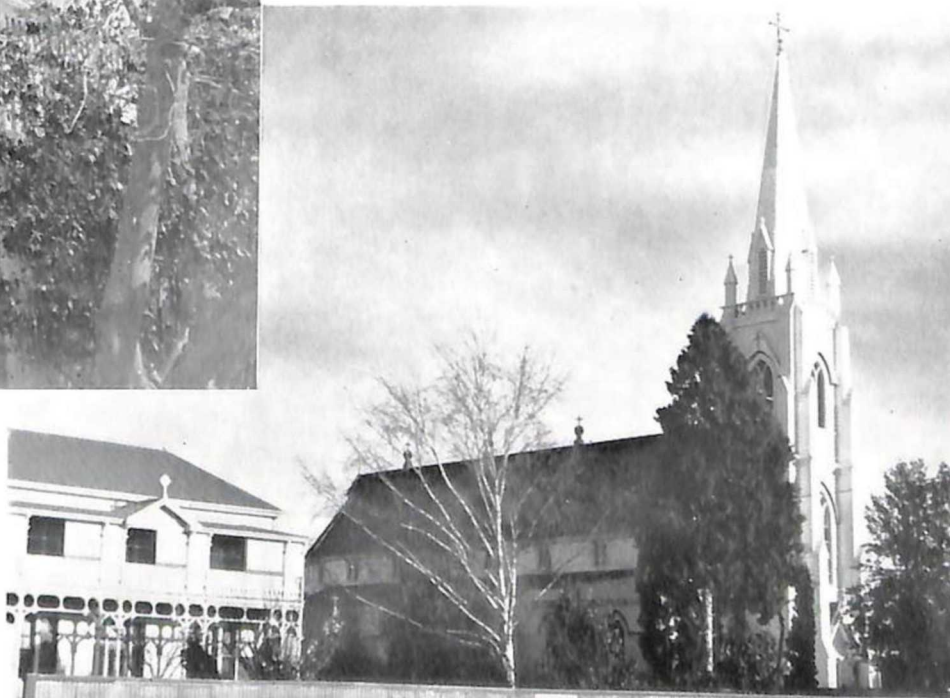


● METHODIST CHURCH



● ST. MATHEW'S  
ANGLICAN CHURCH

● SACRED HEART  
CATHOLIC CHURCH



# THE HASTINGS HIGH SCHOOL



● A VIEW OF THE SCHOOL BUILDINGS



● EVERY GIRL IS TAUGHT COOKING



● THE ENGINEERING WORKSHOP

● PHYSICAL EDUCATION IS  
REGARDED AS IMPORTANT

● FOLK DANCING IN THE SCHOOL GROUNDS



## EDUCATION IN HASTINGS

A system of free primary education (5-14 years) with fully trained staffs, is provided in all districts where there are sufficient children to justify at least one teacher. Primary schools are controlled by an Education Board. The Board administers all schools in its area and retains its own architect for the building of new schools. The finances of the Board are provided by the Education Department of the New Zealand Government, which defines the general policy under which Education Boards operate.

There are five primary schools and one Convent school in the Borough of Hastings serving approximately three thousand children. Each school has been built according to modern school design and each has its own swimming bath.

### SECONDARY OR HIGH SCHOOLS

The High School, with its modern spacious buildings, beautiful grounds and playing areas (32 acres) provides free education up to University scholarship standard for the senior boys and girls of Hastings. There are nearly six hundred pupils at the school.

In addition to the usual classrooms and laboratories, there are fully equipped engineering, woodwork, art, sewing, cooking and homecraft wings. There are specialist courses and the pupils are taught by a highly qualified and specialist staff of twenty-three university graduates.

### PRIVATE BOARDING SCHOOLS

In the neighbouring residential area of Havelock North, in the foothills, are three of the finest boarding schools in New Zealand.

Iona College (Presbyterian), Woodford House (Anglican) are boarding schools for girls up to the age of eighteen years. Both schools are exceptionally well appointed in spacious grounds, in which an abundance of fruit is grown for the pupils.

Hereworth is a boys' preparatory school in which pupils are given a primary education for Wanganui and Christ's Colleges, which are the New Zealand equivalents of the English public school.

The healthy climate of the Hastings district, combined with the excellent traditions of the schools, makes them exceedingly popular and pupils attend from all parts of New Zealand.



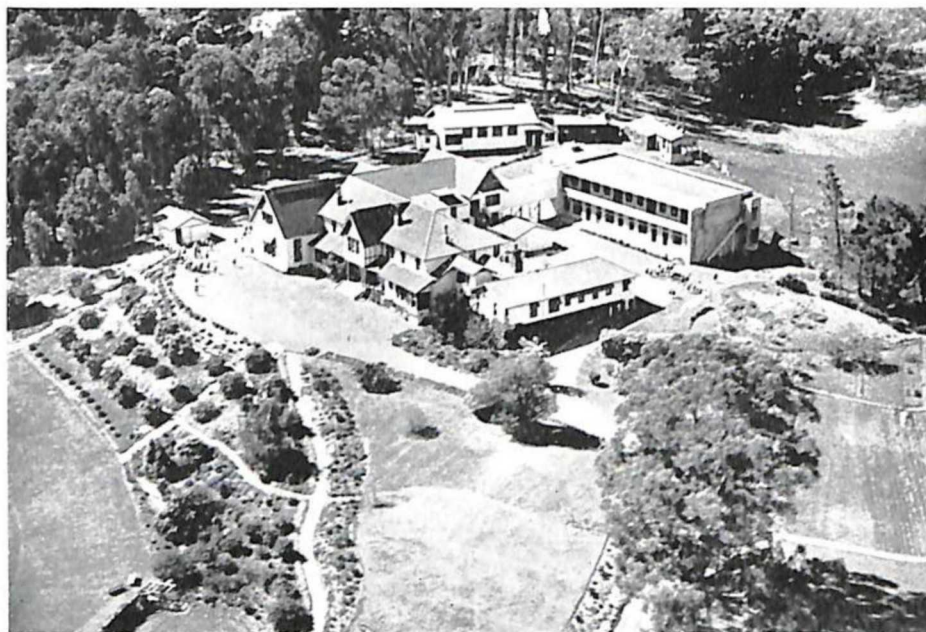
PRIMARY SCHOOL FOR GIRLS AND BOYS

### BENEFITS FOR SCHOOL CHILDREN

In addition to free education, all New Zealand school children are given free dental and medical services, while in most schools milk and apples are supplied daily. Parents receive family benefits of 10/- a week for each child attending school and where it is necessary for children to board away from home, an additional grant of 10/- each week is made. Free travelling is granted also to children living three miles or more from school and where necessary special buses are provided.

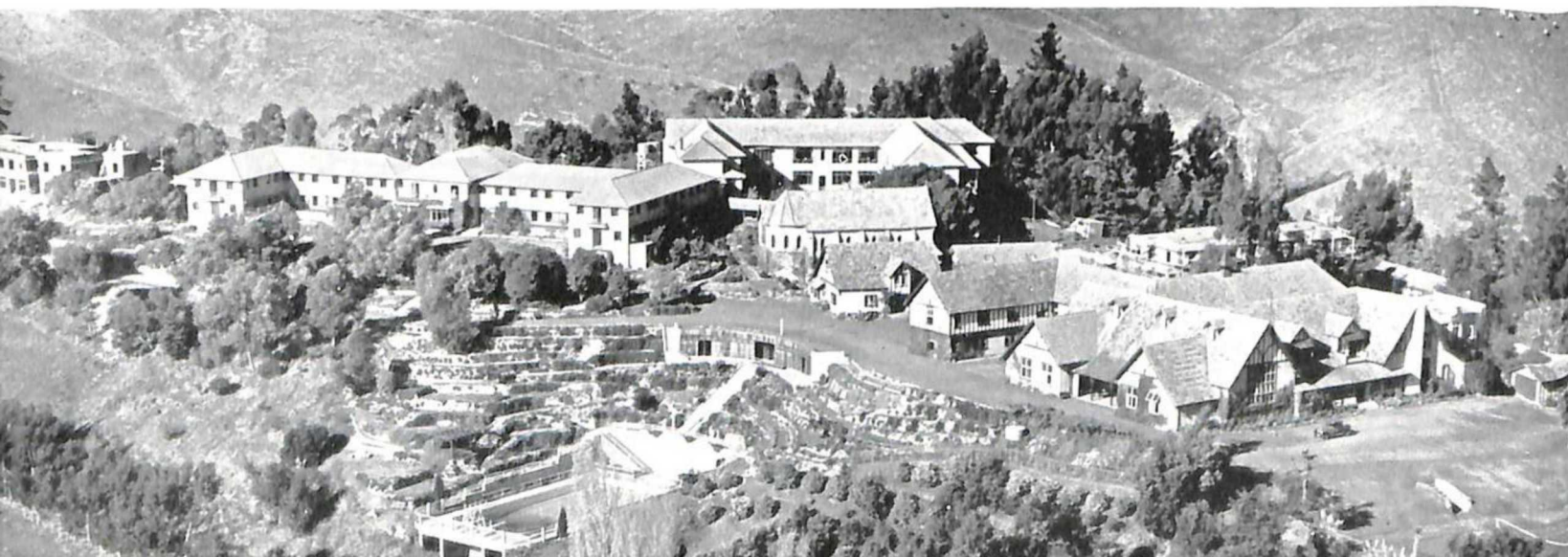


IONA COLLEGE  
PRESBYTERIAN SCHOOL FOR GIRLS



HEREWORTH  
PREPARATORY SCHOOL FOR BOYS

WOODFORD HOUSE  
ANGLICAN SCHOOL FOR GIRLS





# HAYELOCK NORTH

THE RESIDENTIAL AREA



THE "VILLAGE" FROM THE AIR



CLIFTON DOMAIN—ON THE WAY TO CAPE KIDNAPPERS

# BEACHES NEAR HASTINGS . . . .

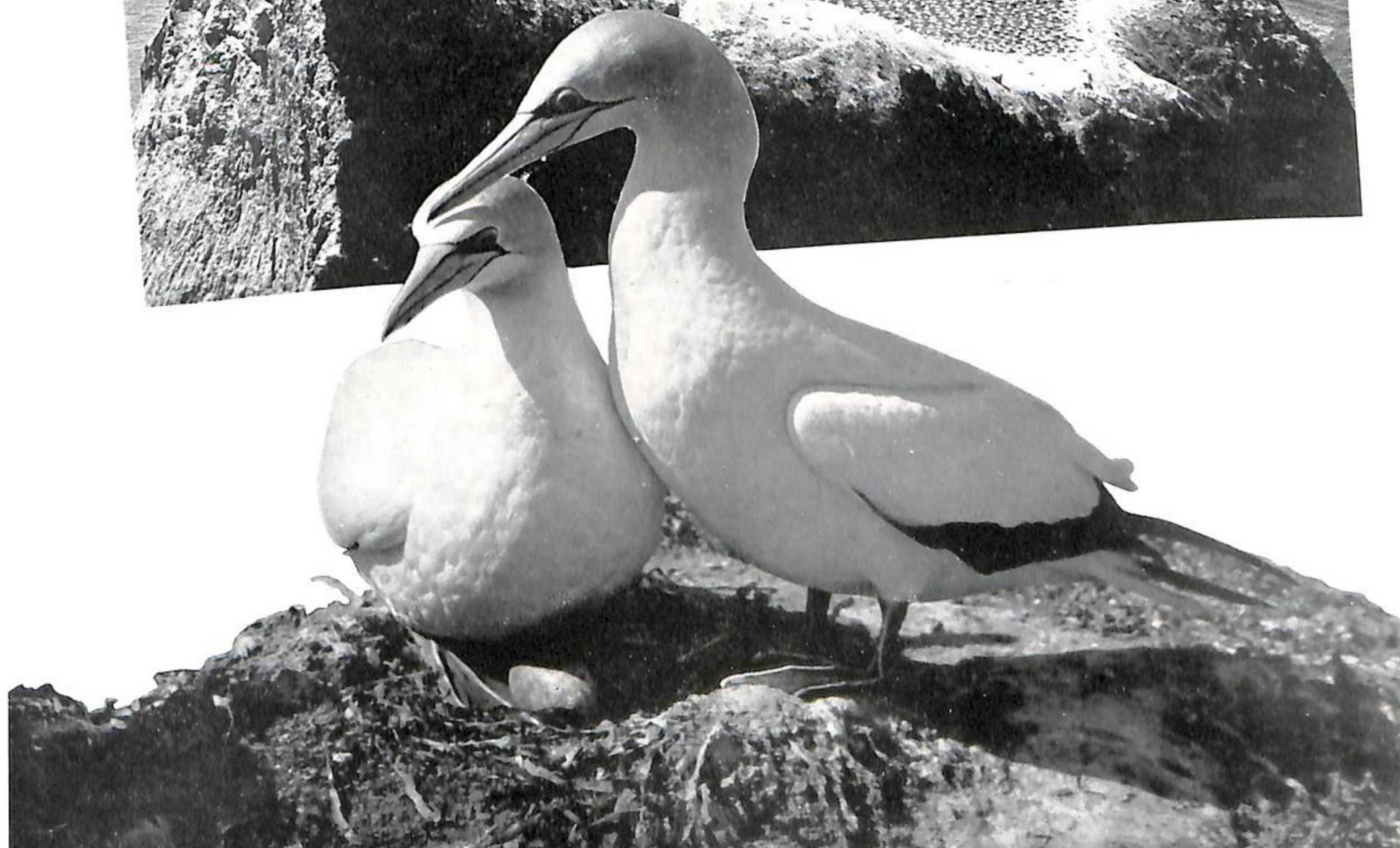
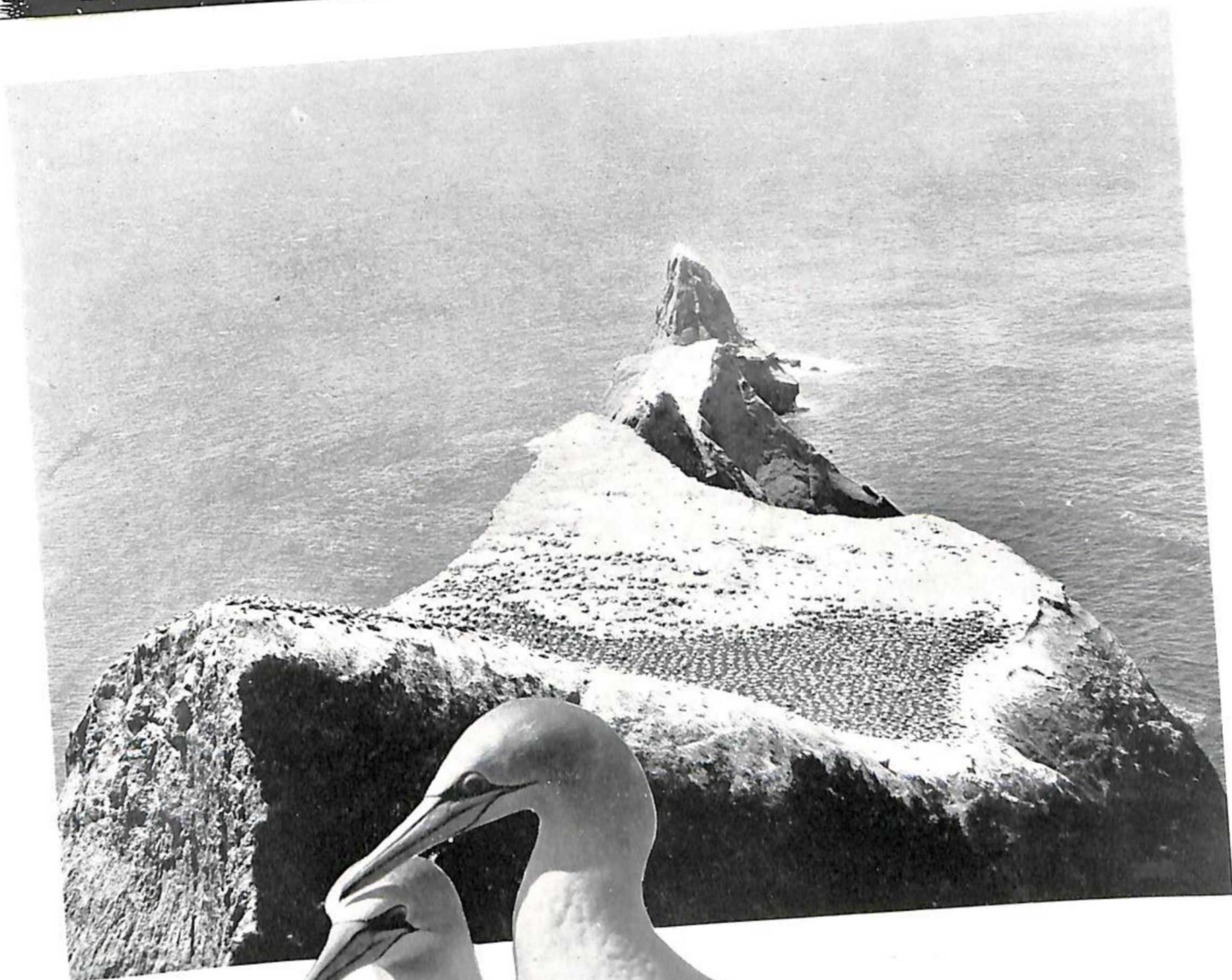
Several excellent beaches lie within a few miles of the Hastings Borough. Waimarama and Ocean Beaches are popular for their miles of golden sands and excellent surfing. Haumoana, Te Awanga and Clifton are the beaches at which sheltered waters provide safe family bathing. These beaches, too, attract the sea fishermen whose efforts are usually rewarded with good catches.

## CAPE KIDNAPPERS

Clifton with its motorists' camping ground, is the starting point from which the more energetic begin the five mile walk to Cape Kidnappers and the gannets. Cape Kidnappers—named by Captain Cook when the Maoris attempted to kidnap a cabin-boy—boasts of a mainland gannetry where thousands of gannets lay their eggs and rear their young on the open rock faces. The gannetry has proved most popular with residents and visitors alike. It is necessary to consult with the ranger at Clifton before making this trip because of the tides. Those who take this precaution, however, will enjoy an excursion under ideal conditions.

NEW ZEALAND'S

# MAINLAND GANNETRY . . .



# HAWKES BAY AND EAST COAST

## AERO CLUB

Celebrating its twenty-first birthday in November of this year, the Hawkes Bay and East Coast Aero Club was one of the first to be established in New Zealand.

A group of enthusiasts subscribed for the first plane—a D.H.60—and the Club began its operations on an open paddock a few miles from Hastings. In 1929 its somewhat primitive aerodrome was the venue of one of the Dominion's first Air Pageants—a function which contributed in large measure to foster air mindedness in the district.

Within a year or so it became evident that the Club would need a larger aerodrome and land was purchased four miles from Hastings and the new area was occupied in 1933. The aerodrome now has spacious hangars and workshops, together with an imposing two-storied Club House.

From the time of its inception until the outbreak of the Second World War flying activities became increasingly popular and the Club's activities extended to other parts of Hawkes Bay. It gained a reputation, not only for its sound administration, but for the wholehearted manner in which it participated in the community life of the district.

Proud of the war record of many of the airmen who were trained at the Bridge Pah aerodrome, the Club's members played their part in the Battle of Britain and in all theatres of war. It is significant, too, that Wing Commander Tacon, D.S.O., M.V.O., D.F.C., A.F.C., now Captain of the King's Flight, and personal pilot to His Majesty, received his early flying instruction at Hastings.

During the war years the Club's planes were taken over by the Government, but, with the cessation of hostilities Club flying and instruction was continued with added zest. The fleet now comprises six Tiger-Moths, a Whitney straight and a Proctor. For many years the Club has provided an air-taxi service which has proved invaluable to the district. The Proctor has now been equipped as an ambulance machine and is always available for urgent medical cases.





# NEW ZEALAND AERIAL MAPPING LTD.

Registered in 1936, when its Managing Director-Chief Pilot underwent a photographic and flying course in England, N.Z. Aerial Mapping Limited opened up a field of industry previously untouched by private enterprise in New Zealand.

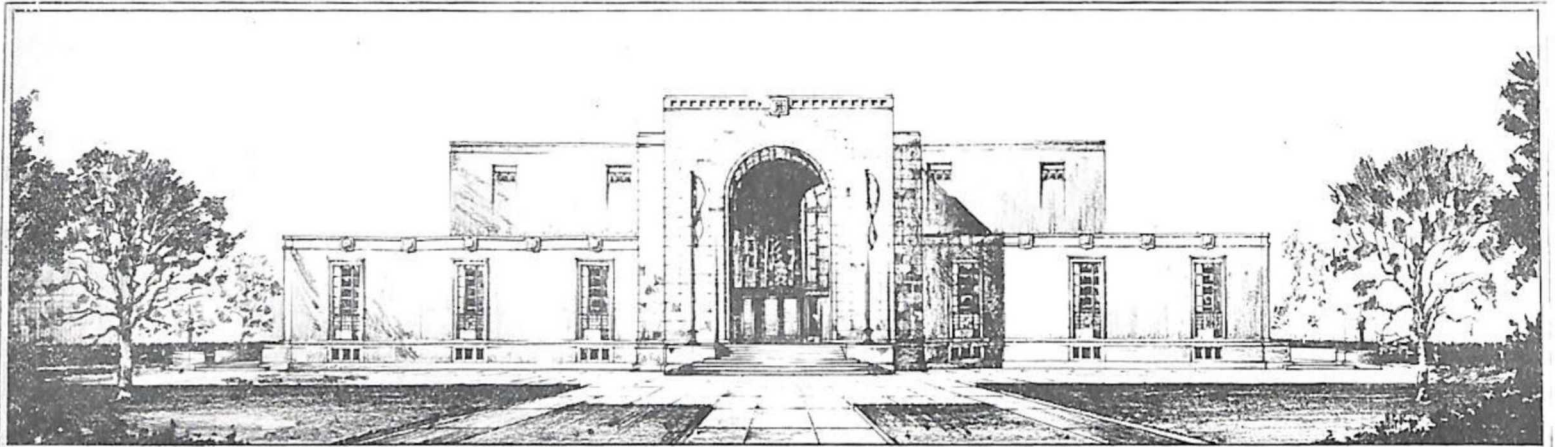
By keeping well abreast of photographic survey technique and endeavouring to give service to Government Departments, Civil Engineers and Farming Public, the organization has become consolidated as one of Hastings' most interesting industries. From a staff of three in 1936, thirty people are now permanently employed in their workrooms.



- COMPANY'S AIRCRAFT—THIS BEECHCRAFT WITH ITS PERSPEX NOSE COMPARTMENT WAS ESPECIALLY FITTED OUT FOR AERIAL SURVEY IN NEW ZEALAND
- FLIGHT LINE AND OVERLAP CHECK
- HYDRAULIC ELECTRIC ENLARGER
- SET-UP OF PHOTOGRAPHIC EQUIPMENT IN AIRCRAFT. SHOWING CAMERA AND SIGHT



# HASTINGS DISTRICT WAR MEMORIAL



Perspective Drawing

Hastings and District War Memorial.

Doreen Phillips & Chaplin, Reg. Archts.

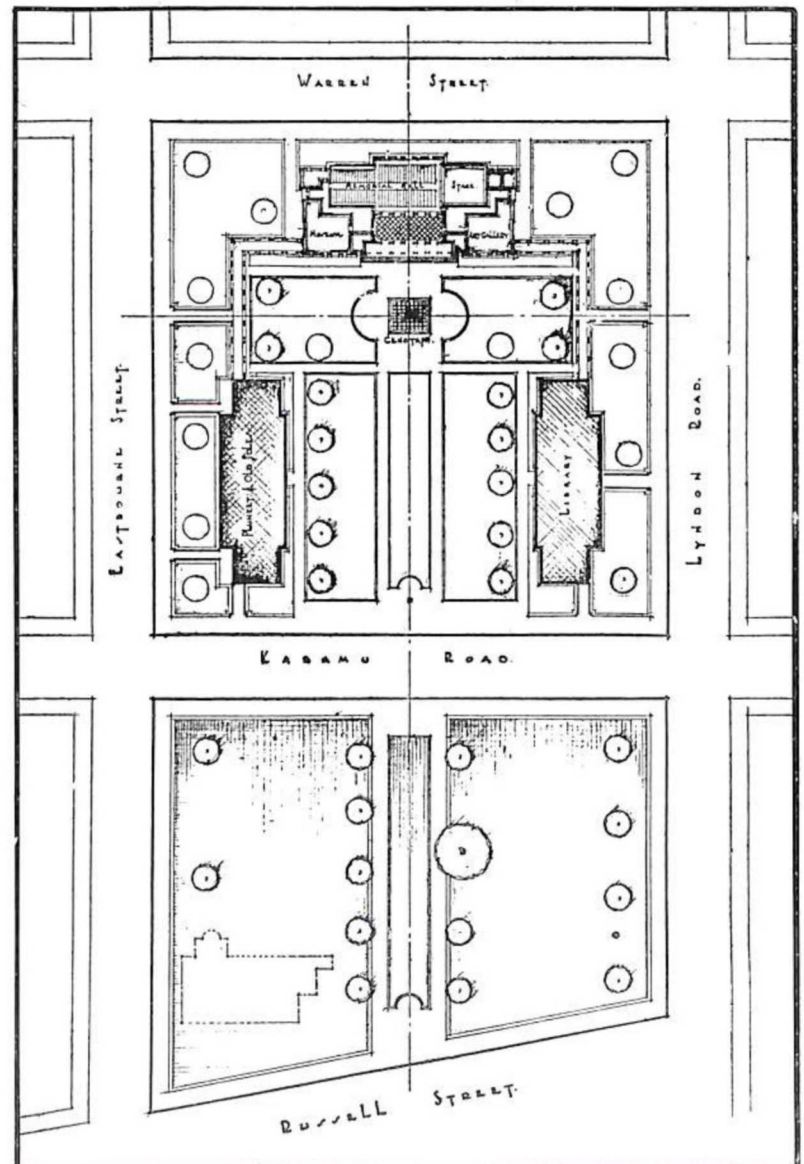
Suggested lay-out of the Civic Square and an additional block to be acquired to provide a suitable setting for the War Memorial Hall and additional community facilities.

The plans provide for:—

The erection of a War Memorial Hall with additional facilities marked "Art Gallery" and "Museum."

The removal of the Cenotaph to a site adjacent to the proposed Memorial Hall.

The adaption of the Cenotaph to provide a Roll of Honour for the Second World War.



# INDEX

|                                     |    |                                     |    |
|-------------------------------------|----|-------------------------------------|----|
| INTRODUCTION - - - - -              | 1  | PROCESSING FRUIT AND VEGETABLES -   | 28 |
| BOROUGH AMENITIES - - - - -         | 2  | QUICK FREEZE PROCESSING - - - -     | 30 |
| RATES - - - - -                     | 3  | SMALL FRUITS - - - - -              | 31 |
| PUBLIC BUILDINGS - - - - -          | 4  | CHERRIES - - - - -                  | 32 |
| SHOPPING AREAS - - - - -            | 5  | HONEY - - - - -                     | 33 |
| PARKS AND RESERVES - - - - -        | 6  | WINE - - - - -                      | 34 |
| MOTOR CAMP - - - - -                | 8  | THE KIWI - - - - -                  | 35 |
| RESIDENCES - - - - -                | 10 | RACING - - - - -                    | 36 |
| POPULATION AND WATER ANALYSIS -     | 12 | POLO AND HUNT CLUBS - - - - -       | 37 |
| HOSPITAL - - - - -                  | 13 | SCENIC ATTRACTIONS - - - - -        | 38 |
| AERIAL VIEWS OF BUSINESS AREA -     | 14 | FISHING AND SHOOTING - - - - -      | 40 |
| AGRICULTURAL AND PASTORAL SOCIETY - | 16 | CHURCHES - - - - -                  | 41 |
| SHEEP AND WOOL INDUSTRY - - - -     | 18 | EDUCATION - - - - -                 | 42 |
| BEEF FOR BRITAIN - - - - -          | 22 | HAVELOCK NORTH - - - - -            | 47 |
| STOCKYARDS - - - - -                | 23 | BEACHES NEAR HASTINGS - - - -       | 48 |
| GRASS SEED - - - - -                | 24 | CAPE KIDNAPPERS, GANNETRY - - -     | 49 |
| DAIRYFARMING - - - - -              | 25 | HAWKES BAY AND EAST COAST AERO CLUB | 50 |
| FRUIT - - - - -                     | 26 | AERIAL MAPPING - - - - -            | 51 |
|                                     |    | HASTINGS DISTRICT WAR MEMORIAL -    | 52 |

## PRODUCED FOR THE HASTINGS BOROUGH COUNCIL

|                                 |  |            |
|---------------------------------|--|------------|
| PRODUCTION - - - - -            | G. E. G. ROGERS - - - - -                            | HASTINGS   |
| PHOTOGRAPHS - - - - -           | RUSSELL W. ORR - - - - -                             | HASTINGS   |
|                                 | N.Z. AERIAL MAPPING CO. LTD -                        | HASTINGS   |
|                                 | N.Z. GOVERNMENT PUBLICITY<br>DEPARTMENT - WELLINGTON |            |
| ART WORK AND PRINTING - - - - - | COULLS SOMERVILLE WILKIE LTD -                       | WELLINGTON |