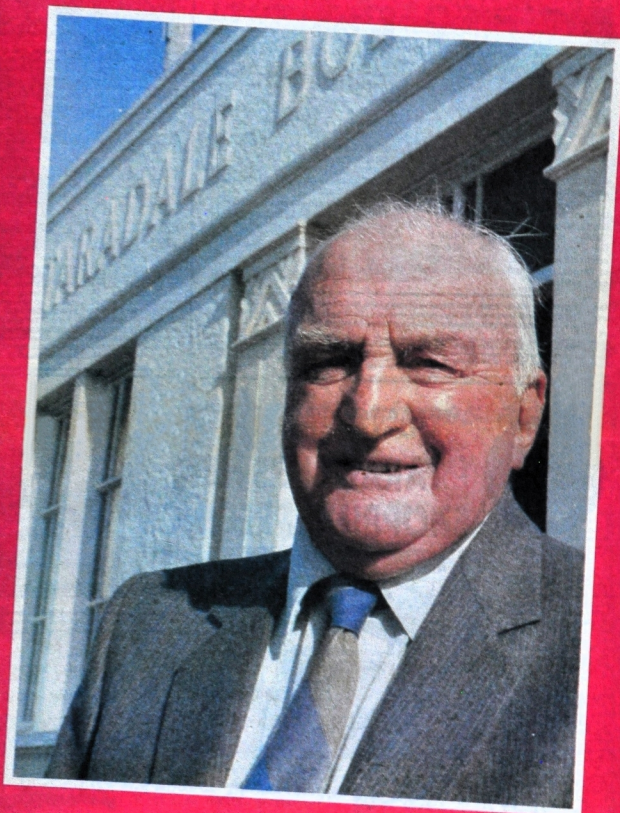


TARADALE

1886-1986

# Centenary salute



August 2, 1986

A Daily Telegraph publication

# Foreword: With my own eyes

It is my privilege to provide the foreword to this special publication marking the centenary of the Taradale Town Board.

My grand-uncle settled in Meeanee prior to 1866, and my father and mother came to Taradale in 1901.

I was born here nearly 80 years ago, and have seen the growth of the district from rural to urban over that period.

It was my good fortune to know some of the early settlers and later on to work with and live with their descendants.

I have among my collection of photographs one taken at the 50th anniversary of the town district in which are shown many of the descendants of the early settlers. In those days we were a fairly close-knit community, small enough to know practically everyone.

Today, 50 years on, we are now a large part of the City of Napier, and have, perhaps, lost some of our identity. Not all, however, and that is the reason for the present celebrations: To keep alive the history of Taradale, and to do honour to those early settlers.

Part of the story will be reflected in the following pages. The Maoris were, of course, in occupation of the time of the coming of the pakeha in the persons of Alley and Tiffen. These two gentlemen were the original owners of the district, which they purchased from the government in 1858 for five shillings per acre.

From that time Taradale has been in the forefront of the cultural, social and sporting activities of the district. Churches, schools and sporting clubs were established at an early date, several now being over 100 years old.

Today Taradale is a thriving community with a progressive shopping area and complete facilities for sporting and social life. It is no longer a rural district of small farms and market gardens, but an urban part of Greater Napier.

Let us remember and do honour to those early settlers during our week of celebrations.

*J. H. McDonald*

FRONT COVER: Mr Arthur Miller, last Mayor of Taradale and still thought of as the district's "first citizen", at the door of the former borough council chambers. On August 11, he will preside over a re-enactment of the council's last meeting before the merger with Napier.

ACKNOWLEDGEMENTS: Production of this publication has been greatly aided by access to the photo collection of the late Mr Doug Shearer and to the extensive research done for the Taradale Centennial Committee by Mrs Irene Lister. Other important sources include the Hawke's Bay Art Gallery and Museum, the 1958 publication Narrative of the Plains, the Taradale Town District golden jubilee booklet of 1956, and a history of the St Mary's Meeanee and Greenmeadows School district produced in 1955.

## Truly Taradale family



Mr T B (Tom) McDonald

Much of the early business and industrial development of Taradale was due to the industry and interest of the McDonald family, and business undertakings they established are still flourishing, enhancing the employment opportunities and economy of the district.

As a boy of 15 Tom McDonald obtained employment with a local wine maker named Steinmetz, and at the age of 21, when Steinmetz returned to Europe, Mr McDonald took over the undertaking, which at that time comprised 5 1/2 acres.

The name of the winery was changed from Steinmetz to McDonald's. Amalgamation with McWilliam's Wines took place in 1962, with both companies retaining their identities until 1975 when Tom McDonald retired.

Other enterprises to benefit from the McDonald influences are McDonald Transport Co. Ltd, McDonald's Supermarket and Waiohiki Sand and Shingle Co (now Napier-Taradale Shingle Co).

Tom McDonald served as a member of the Hawke's Bay Harbour Board for nine years.

He was president of the Hawke's Bay Winemakers' Association

for 40 years, and is also past president of the Wine Institute of New Zealand and one of only two fellows of the institute still living. Only four fellows have been appointed during the institute's history.

He was president of the Omaramu Bowling Club over 50 years ago, and president of the Hawke's Bay Bowling Centre in 1941, and holds life membership of the Taradale Rugby Football Club, Taradale Cricket Club and Napier Park Racing Club.

He was awarded the OBE in 1974.

His father, Lewis McDonald, served two terms on the Taradale Town Board, being deputy chairman in 1911, and officiating at the opening of the original Taradale Town Hall.

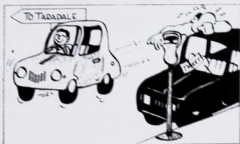
The late Jack Macdonald also served on the Taradale Town Board and Hawke's Bay Harbour Board.

### WHAT A WAY TO CELEBRATE THE TARADALE CENTENARY

## TARADALE'S NEW SHOPPING PRECINCT



**PARK 'N' SHOP**



A first for Hawke's Bay . . .

**FREE PARKING** — with city parking charges increasing you can save \$\$\$ by using Taradale's 'NO COST' parking

**Paved walkways** for pedestrian safety

**2 way traffic flow**

**Drop by and see for yourself**

**TARADALE SHOPPING CENTRE SETS THE PACE AGAIN**



Hawke's Bay Art Gallery and Museum photo

This engraving from the Illustrated London News in the 1860s shows a chief speaking at Pa Whakairo, Waiohiki. The chief was expressing uneasiness at European military preparations.

Donald McLean, leading representative of the European community, listened, and later explained that the precautions were against possible attack by rebel tribes from Waikato.

Sitting in the wheelbarrow is the chief Porokuru, too old and infirm to walk, but the first speaker. The calabashes in the foreground contained cooked mutton birds for the visitors' refreshment.

Pa Whakairo was burnt down in 1867, and a move to Pa Waiohiki was made soon afterward.



THE Greenmeadows Methodist Church, opened for worship in 1868. The vestry extensions at left and rear were added early this century. The present St Mark's Church building was opened in April, 1968.



ANOTHER tiny building from the early days, but one with a rather different use — Taradale's first lock-up.

## Milestones along the way . . .

European settlement in the Greenmeadows-Taradale area began in 1858, when Henry Alley and H S Tiffen bought land there.

Alley named his property "Taradale" after his birthplace in County Meath, Ireland. He built the district's first house in 1860.

He subdivided a block of his land into half-acre and quarter-acre sections to form a new township also named "Taradale." It was advertised as "the prettiest and most remunerative township in Hawke's Bay." Among the buyers were T Gebbie, W Harpham, H Howard and J Hammond.

Taradale's warm climate and fertile soil soon attracted other settlers, including dairy farmers and market gardeners.

The township also played an important part in the district transport. It was a starting point for bullock or horse teams on the H e l i p w a y, a sheepfarming area, notably Puketapu,

Redcliffe, Tunanui and Inland Patea.

Taradale, in common with most areas of the Heretaunga Plains, suffered during the great floods of 1890, 1897 and 1924, and floods remained a danger until the diversion of the Tutaekuri River (1916) and the Ngaururo River (1960s).

As its population grew, Taradale became a focus for social and cultural activities. It acquired hotels, schools, churches, sports clubs and the like.

Presbyterians built Taradale's first church in 1866. All Saints' Anglican (still in use) followed in 1875. Roman Catholics belonged to Mreeanee Parish (1858), one of the oldest Catholic parishes in New Zealand. St Mary's in Greenmeadows was built in the 1970s.

For its opening decades, Taradale enjoyed modest prosperity as a service town for adjacent farmers. Greenmeadows, a township founded by H S Tiffen's land sales in 1855 and 1887, had a similar role.

Taradale became a town district in 1866, was declared a borough in 1883 and enjoyed another 15 years of rapid growth before its merger with Napier City in 1968.

The earthquake of February 3, 1931, left a trail of destruction in the Taradale-Greenmeadows area, where 32 people lost their lives. Among the buildings destroyed were the town hall, band rotunda, infant school, Omarunui Masonic Temple and Taradale Hotel.

The town clock, built in 1923 as a World War I memorial, became a well known landmark. After the 1931 earthquake it had a slant of over two feet, but the damage was repaired.

Taradale-Greenmeadows continues to grow, with new subdivisions for housing available, many on elevated sites on the western hills. It is a popular suburb for incoming residents.

The population is now reckoned to be about 16,000.

# TARADALE PANEL & PAINT



We specialise in all aspects of Insurance Repair Jobs

Let the Experts Guarantee Total Satisfaction

STATE & AA APPROVED

Devonshire Place — Taradale — Ph 442419

## In settler days



Richard Neagle, one of the earliest settlers and a member of the first Taradale Town Board in 1881. After marrying in Meeanee in 1885 and farming for a time at Waitoa he returned to Taradale where he was a butcher for a spell before taking up farming again.



RICHARD NEAGLE'S Meeanee Road home — typical of the settlers' houses before the turn of the century, as the horse and gig were typical as family transport in those times.

BELOW: A family wedding group at the Neagle home in 1906.



### TARADALE SUPERMARKET

Open for your convenience  
9am-4pm EVERY SATURDAY

Park with ease in the FREE carpark and walk thru our back entrance for friendly service with a smile at the



THE



# TARADALE TRADING POST

(Proprietor Kevin Billington)

"Put us on your Map". We Buy, Sell and Trade Quality. "See for Yourself"

NOTE ADDRESS . . .

**DEVONSHIRE PLACE (OFF PUKETAPU ROAD)**

**TARADALE PHONE 446573 A/H 54490**

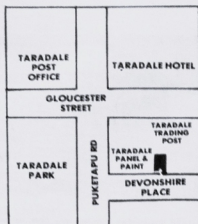
Hours Mon-Fri 9am-5pm, Sat 9am-1pm

**The Largest Variety of  
QUALITY USED FURNITURE YOU  
HAVE EVER SEEN**

Come and just BROWSE. See our Fine Selection of . . .

- \* BEDS \* LOUNGE SUITES \* CHINA
- \* MOWERS \* CRYSTAL \* HEATERS
- \* KITCHEN FURNITURE

*If you have quality goods to sell phone us  
We pay best possible prices!*



## Headed first board



John Drummond, chairman of the first Taradale Town Board, elected on December 25, 1886. The other members were Robert Davidson, George Bradley, Richard Martin and Richard Nesgic.



Howler's Bay Art Gallery and Museum photo

The original Taradale Road, seen from Napier Hill, above North Street. In the middle distance is the road's bridge across the Tutaekuri River.

Taradale Road was opened in 1874. Before that, road access

from Napier in Taradale and the farming areas beyond was via Awatoto and Meeanee.

Tolls were levied at first to pay for the new road's construction and maintenance.



TARADALE School, which opened, on its present site, on August 18, 1879, under headmaster Mr James A Smith.

It was built originally to be able to house 150 pupils.

Extra rooms were added in 1885 and 1888, and again in 1962 and 1963.

Soon after that the old school was demolished and replaced.



ALL SAINTS' Anglican Church, opened in 1875 and still in use. The schoolroom at right was completed first, in 1874.

Anglican worship in the area had begun in the 1860s in the Presbyterian Church in Meeanee, and then was held in rooms in Gloucester Street owned by the Oddfellows' Lodge before All Saints' was built.

# TARADALE INTERIORS

FULL INTERIOR CONCEPT

Choose from an extensive range of wallpapers

Match them to paint, fabrics including upholstery, prints & Lifestyle furniture

**FREE MEASURE & QUOTE**

CURTAINS  
BED SPREADS  
LOOSE COVERS  
UPHOLSTERY



AFTER HOURS SERVICE WEEKENDS & EVENINGS TILL 7.30pm

## TARADALE INTERIORS

Gloucester St Taradale Ph 449823



ABOVE: This steam-driven bus was plying between Napier and Taradale when the HR Motor Co (later Mt Cook Landlines) took the service over from George Rymer in 1903. Rymer began his coach service between the two settlements in 1886.



RIGHT: A horse-drawn bus from the Napier-Taradale route. Its body work was later transferred onto a motor chassis for continued service.



LOWER RIGHT: This White bus from the Napier-Taradale run had primitive seating on the roof for an overflow of passengers.

# Hit

**AND WIN**  
PRIZES WORTH

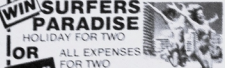
## \$50,000

**WIN TOYOTA COROLLA XL LIFTBACK WORTH \$20,500**  
Supplied by Wrightcars Hastings



SHARP C3700 TELEVISION SET

**WIN SURFERS PARADISE HOLIDAY FOR TWO OR ALL EXPENSES FOR TWO**



JVC HRD 250 VIDEO CASSETTE RECORDER

**'CATS' SYDNEY** trusteebank  
See 'Cats' travelshoppe  
Courtesy of



SHARP T260 MICROWAVE OVEN

Here's how you can Hit and Win!

Every \$100 in your Hit Account gives you one chance in the draw for great prizes.

**BE A WINNER, OPEN YOUR HIT ACCOUNT NOW!**

**Trust Bank**  
Eastern and Central

**HIT A WINNER TODAY**

## TARADALE CYCLES AND MOWERS



HEALING - MORRISON

Proud of servicing  
**TARADALE**  
for over 20 years.

WE SERVICE ALL MAKES ...  
Don't forget we are Agents for  
Lawnmaster and Morrison Mowers

**FREE PICK UP AND DELIVERY OF MOWERS**

Phone 447798

or call  
231 Gloucester St. Taradale



Grape-picking at the Mission vineyards in Meeanee about 1905. The mission's vineyards were the first to be planted in New Zealand.

The men whose faces can be seen are, from left, Brothers Athanasius, Eugene and Cyprian. The boy is said to be Vincent McGilone, who later became Fi McGilone.

The mission moved in 1910 to Greenmeadows, but again planted 7300 vines at Meeanee in 1978, on 4ha of its original area there.

*Hei Revan*

Hei Revan chooses nature's most luxurious fibre to create the silk collection, superbly simple jackets and skirts to combine as you wish. Here, black and white handloomed raw Indian silk . . . also in natural and pink tones.

**gloucester fashions**

TARADALE 442-143

PRE 1965

After alterations  
1965

**HOW  
TIMES  
HAVE  
CHANGED!**

Audrey, Heather & Sharon Johnstone  
and the girls are pleased to offer continuing high quality service to all their valued clients and are proud to participate in the Centennial Celebrations. For expert cutting & styling, perms, colouring & tinting make us your 1st stop.

**mode**  
HAIR DESIGNERS  
TARADALE (Next to Suggden Pharmacy)

# WELCOME TO McDONALD'S SUPERMARKET

*Saradale*



LEFT: ROSS BEATON

1963

RIGHT: BRUCE BEATON  
TODAY'S ASSISTANT MANAGER

IT'S REAL FUN TO SHOP  
WITH MUM AT McDONALD'S

## 50 YEARS OF SERVICE 1936 - 1986

\* 1977 FIRST COMPUTERISED  
SUPERMARKET IN NEW ZEALAND

\* 1983 FIRST STORE IN NEW ZEALAND  
TO  
INTRODUCE LASER SCANNING



McDonald's 1963



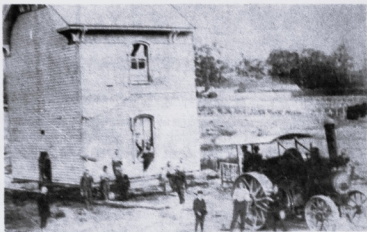


THE Roman Catholic Church's Hawke's Bay Mission was first established at Pakowhai, in 1851, with the move to Meeanee being made in 1858. The first little church separate from the mission buildings was erected in 1863 and extended in 1875 and again in 1882.

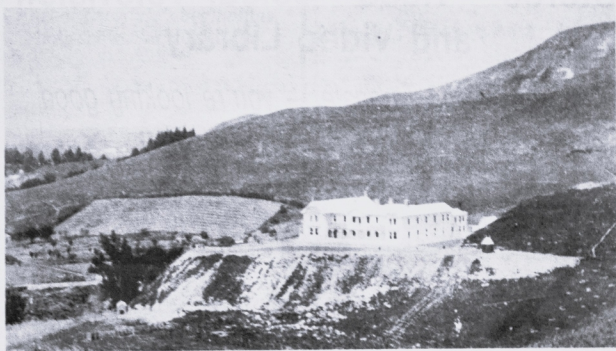
This picture of the church was taken across the grounds of the St Mary's Scholasticate — the mission seminary — as they had been developed in 1905. The statue is of Mary and Jesus, and the fountain had come from St Mary's in Wellington.

But on the very day in 1905 on which it was blessed, yet another flood was occurring, with the water reaching the base of the statue's pedestal. In 1910 the scholasticate's move to the higher ground at Greenmeadows was made.

St Mary's Church remained at Meeanee. In the 1940s, however, services were also held in St Joseph's School, Guppy Road, and Reigner Hall, and the new St Mary's in Osoer Road was blessed in 1972. In 1981 St Mary's at Meeanee was leased to the Taradale Pottery Group.



A SECTION of the seminary on the move. The contractors for the job were Messrs R Holt and Sons, of Napier.



MT ST MARY'S Seminary at Greenmeadows as it looked about 1915.

Congratulations

to Taradale  
on 100 years progress

## Yick and Shirley Gee's MARINE FOODS

TARADALE (Opp. Post Office)

Fresh Fish Daily Fish and Chips

All varieties of fish freshly cooked to order  
Many other home-made delicacies

## HUNGARIA HAIR FASHIONS

White Street — Taradale



Look Good and Feel Good with your HAIR STYLED by the Professionals. come to TARADALE and help us to celebrate our 100 years. We will make you welcome in Taradale.

PHONE 447-040 for your appointment

1907 - 1916



TARADALE'S first post office operated from the beginning of 1871 in James Barry's general store, Meenee Road, with Barry as postmaster. It was later in several other shops till the government built this combined office and residence in 1911. It was moved aside in 1965 to allow a new building to go up.



THE substantial Taradale Hotel pictured in the second decade of this century. The building was ruined in the 1921 earthquake. The first hotel, built of wood and known as the "Duke of Edinburgh", was erected in 1869 and destroyed by fire in 1889, the building shown here going up in its place straight away. The present single-storey hotel was put up in 1932.

# RUSSELL'S SOUND AND VISION

Stereo • Video • Colour Television  
and Video Library

*Congratulations Taradale — you're looking good*

WE'D LIKE YOU TO MEET OUR NEW STAFF



Alan Warner



Christine Edmonds



Linda James

RUSSELL SOUND & VISION 299 GLOUCESTER ST. TARADALE.

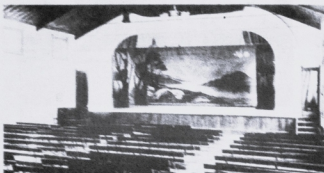
Phone 446944



THE TARADALE TOWN HALL, built in 1911. It consisted of a public hall seating 800, a supper room to accommodate 70 guests, a public library and reading room, librarian's residence, town clerk's office and town board chambers.



THE building in ruins after the 1931 earthquake.



THE town hall interior, showing the stage and about a third of the floor space.



THE replacement town hall, opened in 1932. Separate town board offices were built at the rear in 1934, and the main building was extended and renovated in 1978.

## RICHARD HOWELL MOTORS

*Part of Taradale's beginnings*  
Photo shows Service Station  
in the 1930s



We have recognised the  
growing needs and today  
are Taradale's only  
Fully Franchised Car Dealership  
Servicing your needs into  
the future  
Gloucester Street Taradale



CONGRATULATIONS  
TARADALE  
on your first 100 years

ANZ Bank is proud to be a part of Taradale's development.

Our Service Centre Staff have a full range of financial services to assist with Taradale's future growth.

John, Danny, Pam, Kathryn and Julie would be pleased to discuss these services with you.

CHEQUE ACCOUNTS  
SUPER SAVER  
AUTOBANK  
HOUSING FINANCE

INCENTIVE SAVER  
ESCALATOR DEPOSITS  
BANKCARD  
COMMERCIAL FINANCE  
PERSONAL LOANS



*We'd like to be your bank.*

1917-1926

# HUGE Anniversary Sale

in **BOTH SHOPS**

*Fabrics and Ladies Fashions at*

**FANTASTIC PRICES**

**WHITES** of Taradale

242 GLOUCESTER ST TARADALE

PHONE 447008

## Perfects Butchery

Gloucester St  
Taradale  
Phone 442 774

Where  
QUALITY  
and  
COURTESY  
costs no  
more

ALL SMALLGOODS MADE  
ON THE PREMISES

No order too large or too small



LOOK IN THE  
WINDOW FOR  
WEEKLY SPECIALS



TARADALE'S town clock, the district's World War 1 memorial, which was unveiled in December 1921 by the Governor-General, Viscount Jellicoe. It has become the locality's unofficial symbol. The 1931 earthquake left it tilted about 75cm (2 1/2 ft) out of alignment, and stopped at the exact time of the disaster. The tower was later jacked up and resupported with fresh concrete, back in its correct position.

# CENTENNIAL SUPER SAVERS



## SHIRTS

CASUAL SHIRTS FROM \$20  
BOXED LONG SLEEVE SHIRTS \$26.95

## SOCKS

3 PACK SPORT SOCKS \$8.99  
MENS DRESS SOCKS \$2.99

## SHOES

MENS CASUAL SHOES \$39.99

## BOYSWEAR

WINTER JACKETS FROM \$33.95  
BREAKER LONG TROUSERS \$20.00  
COTTON BRIEFS FROM \$3.00  
STUBBIE SHORTS \$7.50

ADIDAS  
TRACK PANTS  
BLACK/WHITE  
\$45.99

# Hallensteins

TARADALE SHOPPING CENTRE



THE Taradale RSA was founded in August 1920. Its hall (pictured) was opened in 1927, and has been added to several times since. The 25-pounder artillery piece out front was installed in 1921, replacing an old Mobat field gun.



PETROL pumps haven't always looked the way they do today... a picture of E V Howard's "Big Tree" garage in Gloucester Street in 1925. Those in the picture include Ralph Waterhouse and Eddie Howard at left, and Percy Williams second from right.

# TARADALE DIRECT FURNISHERS

## Sell & Recommend

### SLUMBERTIME

Innersprung Mattress & Bases  
Single Mattress & Base from \$195  
Double Mattress & Base from \$284

### CONTESSA

Double Mattress & Box Base \$570

### DUCHESS

Double Mattress & Box Base \$420

"THE REAL DISCOUNTERS"

only at

# TARADALE DIRECT FURNISHERS

389 Gloucester St, Taradale. Ph 442-725

Right next to the T.A.B.  
FOR A WINNING BET!



**DON'T BE THE UGLY SISTER —**  
**Be the Belle of the**  
**CENTENNIAL BALL**

Cindy & the Girls at  
**THE**  
**HAIR STUDIO**

will remain open until 3.30pm on Saturday 30 August  
for your **HAIR & BEAUTY CARE APPOINTMENT**  
**PHONE 442070 NOW**  
for your appointment



Delightfully designed flowers  
for your every occasion.

From the largest stockist of fresh flowers in  
the Bay

**FOR FRIENDLY EXPERT SERVICE**  
**PHONE CHRISTINE, SHIRLEY OR**  
**GERMAINE**

at  
**THE FLOWER BARROW**  
PH 448250

Gloucester St Taradale

## Crabtree & Evelyn®

**TOILETRIES**  
SOAPS — Swiss Maid  
Glycerine  
Jojoba  
Oriental

**BATH SEEDS**  
**BATH CUBES**  
**POT POURRI**  
**ROOM SPRAYS**  
**CONCENTRATE OILS**



**COMESTIBLES**  
**LIQUEUR PRESERVES**  
**FRENCH PRESERVES**  
**ENGLISH PRESERVES**  
**COOKIES**  
**CHUTNEYS**  
**MUSTARDS**  
**HERBAL TEAS**



At the sign of the  
Crabapple Tree  
A delightfully different  
selection of Crabtree  
& Evelyn natural  
food & traditional  
toilettes

**EXCLUSIVE STOCKIST**

## Glenn Roberts Pharmacy Ltd

251 Gloucester St, Taradale. Phone 446-383



# TARADALE pet centre

225 GLOUCESTER STREET,  
TARADALE •



**NO WE HAVEN'T  
BEEN AROUND FOR  
100 years**

(I only look like it)

But we have supplied the  
need of the pets of the area  
for six and a half years now  
and hope to for some years  
yet! Who knows Sidney may  
even make the bicentenary.  
RIP VAN SPEAKMAN

# TAYLOR'S SANTONE DRYCLEANERS

All work processed on the  
premises and fully guaranteed by  
**BARRY TAYLOR**  
CERTIFIED MASTER DRYCLEANER

*We meet all Competitors' Discounts*

Cnr. Gloucester St & Puketapu Rd Ph 442149

## TAYLOR'S

## TOYWORLD

### CRAZY CENTENNIAL DISCOUNTS

on Cash Sales of:—

- BIRTHDAY BARBIE ~~29.95~~ **\$15.95**
- DAY TO NIGHT KEN ~~29.95~~ **\$15.95**
- MATCHBOX 'Yesteryear' MODELS ~~29.95~~ **\$9.95**

*Plus Mind-boggling reductions on*

- ACTION MEN • KNIGHT RIDER CARS

BANKCARD • VISA • CLUBCARD WELCOME



## TARADALE MACHINE KNITTING WORKSHOP

For BROTHER Machines, accessories & parts  
— if we haven't got it in stock we can get  
it for you.

Excellent range of yarns on cones &  
patterns for machine knitters.

**PLUS — Ready to wear handcraft garments.**

**OPEN MON-FRI 9am-4pm**

Cnr Gloucester St & Puketapu Rd  
(Above Tremain Travel)

Taradale  
Ph 442754

# Centennial Specials

# \$200

## OFF SELECTED LOUNGE SUITES



### WOOL FABRIC —

3 SEATER + 2 CHAIRS	WAS	MONTH
VERY COMFORTABLE	\$1875	\$1675

3 SEATER + 2 CHAIRS	WAS	NOW
— THE LATEST STYLE	\$1760	\$1560
WOOL FABRIC		

3 SEATER + 2 RECLINERS	WAS	NOW
BROWN EASYCARE FABRIC	\$2140	\$1940

SHADOW VELVET COVERED	WAS	NOW
3 SEATER + 2 CHAIRS	\$1540	\$1340
'A GREAT BUY'		



## \$100 OFF

SOFA SLEEPER	WAS	NOW
+ 2 CHAIRS	\$1030	\$930
(makes into a		
double bed)		

CORNER SUITE	WAS	NOW
Popular colour	\$1099	\$999

## Quake takes its toll

Taradale and Greenmeadows suffered at least 21 deaths and much property damage in the Hawke's Bay earthquake of February 3, 1931.

Nine were killed in the Mt St Mary's Seminary chapel — two priests and seven students — and a Taradale woman visiting a former matron at the seminary was killed in the crumbling of the maids' cottage.

A teacher was killed in St Joseph's Convent, Guppy Road. The building collapsed, and was not rebuilt.

Three children died when the brick infant school at Greenmeadows collapsed. The school was replaced in wood.

The two-storey Taradale Hotel collapsed and a man outside was killed.

A child was killed when the Otatarā homestead collapsed.

Three more Taradale residents died at their homes, a Taradale woman died in Napier, and another died in Hastings.

Also demolished in the Taradale town Board area were the town hall, library and board offices, and damaged were the Masonic Hall, police station, Howard's Garage and seven shops, while the town clock was left with a severe lean.



THE chapel at Mt St Mary's Seminary on February 3, 1931. Two priests and seven students died amid the falling debris.



THE earthquake damage to the then newly completed kitchen and dormitory block at Mt St Mary's. The northern end had fallen 1.3 metres. In one of the biggest jacking jobs done in New Zealand to that time, 18 hydraulic jacks, each able to lift at least 50 tons, were brought in to lift the ferro-concrete building and allow the reconstruction of its ground floor.

**IVAN SMALL**

REAL ESTATE

TARADALE

**NOT QUITE  
100 YEARS OLD!**

But we are the first  
in Taradale



**FOR ALL YOUR REAL ESTATE  
REQUIREMENTS**

**1927-1936**



*Hawke's Ray Art Gallery and Museum photo*

**ALL that was left of the Taradale Hotel after the earthquake.**

**CONGRATULATIONS  
TARADALE**



IT'S BEEN OUR PLEASURE  
SERVING TARADALE FOR 26  
YEARS WITH TOP BRAND  
FOOTWEAR.

SELBY • HUSH PUPPIES • MARLER

BELLINI • CILLA • RIEKERS • K SHOES

**MILLS FOOTWEAR**

Gloucester St. Taradale

Phone 447419



*Hawke's Ray Art Gallery and Museum photo*

EARTHQUAKE damage to the Redcliffe Bridge, which had been standing since 1881. A new one was already in the planning stages, but this one was repaired to serve till the present concrete and steel structure was ready in July 1934.

**V  
I  
C  
T  
O  
R  
I  
A  
N  
A**



**ANTIQUE  
AND  
COLLECTORS'  
ITEMS**

We buy and sell  
Antique Furniture,  
Silver, China,  
Jewellery,  
Bric-a-Brac  
and  
Interesting  
Collectables.

258 GLOUCESTER ST  
TARADALE, H.B.  
PHONE 44801

**PETER SUGDEN  
PHARMACY**  
Your Family Chemist  
**TARADALE'S FIRST  
WALK THRU  
PHARMACY**

from carpark → Gloucester Street



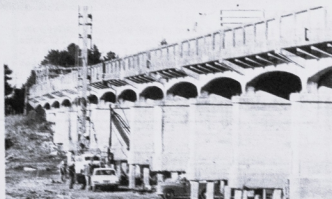
STOCKISTS OF —  
COSMETICS  
Revlon  
Cyclax  
Mary Quant  
Max Factor  
Miners  
PERFUMES  
Lanvin  
Houbigant  
Carvan  
Lentheric

**LOW COST DEVELOPING & PRINTING  
ONLY \$7.95 24 EXPOSURE**





ABOVE: The present-day Taradale Hotel, built in 1932, in the style of the times, to replace the two-storey brick building destroyed in the earthquake.



LEFT: The present Redcliffe Bridge, built of reinforced concrete and steel in 1934, is seen here being strengthened in 1975.

# TRACS

PH 442828

## CENTENNIAL SALE

Starts Monday

ALSO CD'S ARE HERE  
Something for Everyone

SEE YOU AT  
233 GLOUCESTER STREET



## Traditional or Modern GARDENS

*Whether you are just starting a brand new garden or keeping beautiful a long established one — then start at*



### SIMMONDS

Offer friendly expert advice and Highest Quality Plants, Shrubs, Seeds & gardening equipment

P.S. DON'T FORGET WE HAVE A VERY COMPREHENSIVE RANGE OF PET SUPPLIES

Gloucester St Taradale — Ph 442183

# Hers



BENDON  
PICKABERRY  
KOKO

PHONE  
442286

**NATURAL LIVING  
WHOLE FOODS**

For the Old Fashioned  
Goodness of  
**WHOLE FOODS**

Browse through our selection of Bulk Buy Foods and  
select for yourself any quantity.

WE SPECIALISE IN:

- \* HERBAL TEAS \* HOMEOPATHIC REQUIREMENTS
- \* "NO ADDED SUGAR" SNACK PRODUCTS (suitable for Diabetics  
& Hyperactive children) \* SPECIAL DIET REQUIREMENTS

1 PUKETAPU ROAD TARADALE Ph 445852

1927-1936

## Golden jubilee town board



THE Taradale Town Board of 1936, the golden jubilee year. From left: Back row, J A Wilkinson, G D Webb, W G Jarvis (town clerk), and J Gilmour; front, F O Anderson, W H C Howard, J Williamson (chairman), J B Wainscott and Miss E M Jarvis (assistant clerk).

Taradale's population at that time was 1206.

**WHEREVER YOU GO!**

**BAY VIDEO**

- \* Free Membership
- \* Reduced Rates Mon-Thurs
- \* Top Releases
- \* Open until 8.30 — 7 days a week

**AROUND THE CORNER IN  
TARADALE**



**CONGRATULATIONS  
Taradale Shopping Centre  
100 YEARS TOO!**

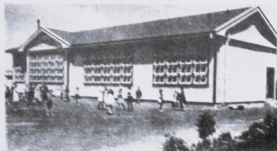
**WARNOCKS HAVE SPECIAL CELEBRATION OFFER IN  
PACE SWEATGEAR**

SWEATSHIRTS	SWEATPANTS
<p>Mens Normally \$39.95</p> <p style="text-align: center;"><b>\$29.95</b></p> <p style="text-align: left; font-size: small;">SPECIAL PRICE</p> <p>Boys Normally \$31.95</p> <p style="text-align: center;"><b>\$22.95</b></p> <p style="text-align: left; font-size: small;">SPECIAL PRICE</p>	<p>Mens Normally \$24.95</p> <p style="text-align: center;"><b>\$20.95</b></p> <p style="text-align: left; font-size: small;">SPECIAL PRICE</p> <p>Boys Normally \$22.95</p> <p style="text-align: center;"><b>\$16.95</b></p> <p style="text-align: left; font-size: small;">SPECIAL PRICE</p>



AVAILABLE AT EMERSON ST NAPIER AND TARADALE.

# Greenmeadows School



The Greenmeadows School building erected in 1922 to replace a brick one that was destroyed, with the loss of three pupils' lives, in the 1912 earthquake.

The school traces back to private classes held in the Methodist Church

and the back of Colwell's store.

It became a public infant school, operating under the Taradale Primary School, in 1911, and the brick building was put up in 1922.

The school became independent of the Taradale one in 1945.



**DIAMOND  
DRY CLEANERS**  
TARADALE

**"TARADALE SHOPPERS"  
WE WILL DRY CLEAN YOUR  
TROUSERS OR SLACKS  
FOR ONLY \$3.30**

**A REAL WORTHWHILE SAVING  
• YOU WON'T GET A BETTER JOB IN TARADALE**

**DIAMOND DRY CLEANERS**  
GLOUCESTER COURT  
TARADALE



Ever since we opened  
We've been pleased to bring you  
**HIGHEST QUALITY**  
**LADIES FASHION**  
(1986)

**EVE LYNN BOUTIQUE**  
Gloucester Mall • Taradale

- \* HISTORICAL PHOTOS
- \* OLD FAMILY PHOTOS

Whether the photos are black and white, coloured, or possibly need some restoration we can produce copies, to your requirements at:

### TARADALE PHOTO SERVICES

Gloucester Court Taradale

PHONE 449884

Restore and copy your Harlequin photos and join the Centennial Celebrations

## Mr & Mrs Trousers



Can give you all of today's styles and fashions in Men's and Ladies' Trousers and Ladies' Skirts, with all the charm and service of yesteryear.

We are proud to be the last shop in H.B. still offering a totally FREE alteration service on every purchase.

### MR & MRS TROUSERS

For Yesteryear Values for Today's Styles  
GLOUCESTER MALL, TARADALE

PHONE 448-509



## The Security Centre

Gloucester Court, Taradale

also

Civic Court, Napier  
(on From August 11, 1986)

**We offer you these  
PROFESSIONAL SERVICES**

- Complete lock and key service
- Safe Sales and Services
- Keys duplicated, home and automotive
- Master keying and keying alike
- House lats supplied at competitive rates
- OZ system to discourage unauthorised key duplication

**C JOHNSTON - LOCKSMITH**  
Ph. 442-743 (Tara) Ph. 54-147 (Nap)  
Box 628, NAPIER





**QUALITY  
BOOK  
EXCHANGE**  
SHOP 4  
GLOUCESTER COURT  
TARADALE  
PHONE 446-590

### WE BUY, SELL AND EXCHANGE

*Good prices paid for good quality*

**PAPERBACKS — PENTHOUSES — COMICS  
CHILDREN'S BOOKS — SCIENCE FICTION  
WESTERNS**

Neither we nor our Books are 100 years old. In fact our staff are young & sprightly and always ready to serve.

# Long service at Maori girls' college

Sister Mary Crescentia photographed last month outside St Joseph's Maori Girls' College, Greenmeadows, of which she was principal from 1933 to 1935.

The school was established on a Napier Hill site in 1867 by the Sister of Our Lady of the Missions.

Opportunity was taken to change the site in 1855 when a new building became necessary, and the new school was opened in June, 1855.

At that stage Sister Mary Crescentia recalls, the college had a staff of three and 30 pupils.

Now it has 230 pupils, about 20 teaching staff and about 30 part-time hostel staff.

Sister Mary Crescentia,

after retiring as the college principal became head of the Congregation of the Sisters of Our Lady of the Missions in the North Island, but since retiring from that position in 1977 has returned to reside at St Joseph's. She is now in her early 80s.

In the 1982 New Year honours list she was made a Companion of the Queen's Service Order for community service and service to the Maori people.

Though most of her work at the school has been teaching, her activities have not been limited to the classroom. They have also extended into the home and the community through contact with former students and their families.



AN EARLY picture of the college in Greenmeadows.

## POPPIES

POP IN  
and  
enjoy a leisurely  
morning tea, lunch  
or afternoon tea

At  
**POPPIES**

**OPEN 8am-4pm MON-SAT**  
**9am-2pm SUNDAY**

## TARADALE

has been up  
& running  
for 100 years!

We've been  
troting along  
for 4 years  
and looking  
forward to a good  
steady pace for  
the next 96!



**TARADALE HOTEL**  
Gloucester St Taradale Ph 442338  
**ACCOMMODATION, ENTERTAINMENT, LOUNGE**

plus  
**BAY BOTTLE BARN**, for all your party supplies  
Monthly specials plus lots of instore bargains  
**FREE DELIVERY PHONE 449635**



In 1945 Mr Gilbert Atkins took over the Taradale horse-and-cart milk delivery service which his father, Mr A P Atkins, in turn, had taken over from Mr W Chapman in 1938.

The service had begun about 1918, and horses were to continue to be used till Gilbert retired in November 1984. It was the last such horse-and-cart service in New Zealand.

In this photograph, taken in 1966, Gilbert is seen with his brother Richard (left), who worked with him for about 18 years, and 22-year-old Floss.

Also in service at that stage were Meg, Kate, Dolly and Algie.

Even now Mr Atkins and his horse and cart have not been entirely lost to Taradale — they still frequently ply a shopping centre route carrying passengers of all ages.

**TOYS FROM THE ATTIC.**

Celebrates Taradale's 100 years with tomorrow's keepsakes

**Bags of Fashion.**

GLOUCESTER ST. TARADALE. 448852

**barbecue aprons**

Don't miss these! Footrot Flats, by Murray Ball... three different designs on glossy, wipe-clean aprons. \$14.75

**La Cuisine**

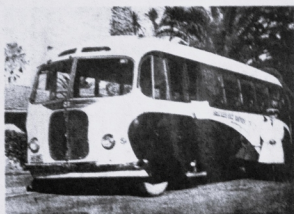
GOURMET COOKWARE • GLOUCESTER ST TARADALE 446796



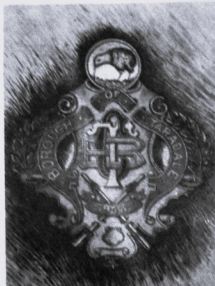
THE last Taradale Town Board before the area became a borough on October 1, 1953. The members are, from left: Back row, F O Shaw, A Stafford, J L Dean; front, R V Leman (town clerk), E V Howard, J F Ewan (chairman), C F North and Miss C E McCarthy (assistant clerk). Absent: B O Miller. The borough began with a population of about 2900.



THE first mayor and mayoress of Taradale Borough, Mr and Mrs Fred Yeo. Mr Yeo had been town board chairman from 1946 to 1950, and was borough mayor from 1953 to 1955.



THE pride of the Hawke's Bay Motor Company's fleet in 1948.



The crest of the Borough of Taradale



## MISSION VINEYARDS

ESTABLISHED 1851 (AND STILL GOING STRONG)

Congratulate Taradale  
on its Centennial



BROTHER JAMES INVITES ALL RESIDENTS TO INSPECT OUR REMODELLED CELLARS AND TO STOCK UP WITH MISSION WINES FOR YOUR ENJOYMENT NEXT CENTURY.

CENTENNIAL VINTAGE RIESLING-SYLVANER  
ON SALE AT CELLARS — CHURCH ROAD

A Book  
For All Who Appreciate  
the Beauty of New Zealand



A collection of 61 Oil Paintings and 45 Sketches by Jonathan White

SPECIAL  
PRE-PUBLICATION OFFER  
**SAVE 10%**  
(as indicated by publication date — August 18)

Not since the colonial artists of last century has any New Zealand landscape artist attempted a truly representative portfolio of New Zealand landscapes, showing the country in all its bold and natural beauty.

Jonathan White's first book, *New Zealand's Majestic Wilderness*, published in 1901, was a collection of 52 paintings of Fiordland. The book was very successful, being reprinted and selling out. For the last four years White has travelled the length and breadth of the country to paint his New Zealand.

See an  
advance copy  
of this  
Magnificent Book

at:

**JOLLS BOOKSHOP**  
NOW

Order Form:—

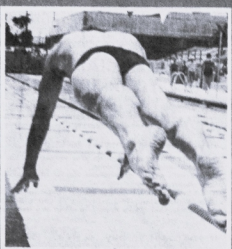
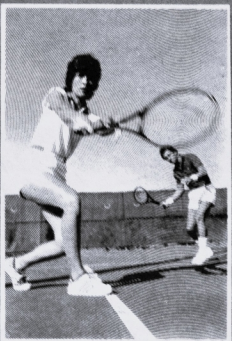
PLEASE SEND ME, on publication, \_\_\_\_\_ copy/copies of Jonathan White's *NEW ZEALAND* at \$99.95 each, or if ordered before August 18 at \$89.95 each

TOTAL AMOUNT \$

Check: please make payable to your bookseller  
Name \_\_\_\_\_  
Address \_\_\_\_\_  
Card:  Visa  Bankcard  
No. \_\_\_\_\_  
Phone (day) \_\_\_\_\_  
Expiry Date \_\_\_\_\_  
Signature \_\_\_\_\_ Date / / 86

PLEASE COMPLETE AND RETURN TO:

**JOLLS BOOKSHOP, 377 GLOUCESTER ST., TARADALE**



**WE'RE BREAKING  
RECORDS FOR TODAY'S  
ATHLETES IN FASHION  
GEAR from**



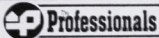
**ATHLETIC ATTIC**

Corner Tennyson & Hastings Streets, Napier  
Phone 52-129  
1 Puketapu Road, Taradale. Phone 448-419

**BANK CARD  
VISA  
AMEX**



"REMAINS OF TARADALE" "REMAINS OF TARADALE" "REMAINS OF TARADALE" "REMAINS OF TARADALE" "REMAINS OF TARADALE"



GLoucester STREET  
TARADALE

HERE'S GOOD ADVICE:-

**"SEE A SPECIALIST TO SOLVE YOUR PROBLEM"**

Tremain's of Taradale specialise in selling homes in the Taradale/Greenmeadows area. (We also have a complete list of other areas)

If you are thinking of selling, we can offer you

- (a) A FREE market appraisal on your property - i.e. a price based on current sales and conditions.
- (b) The help of our experienced Napier office selling team with their clients.
- (c) All benefits of our market plan - a sole agency listing.
- (d) A Group Listing. This brings in, if you wish, salesmen from three other Real Estate firms - without any extra effort on your part.

If you want to buy, we can offer you:-

- (a) The biggest list of homes for sale in our area.
- (b) An efficient, friendly and confidential service from any of our team.
- (c) Unpressured help on all aspects of home buying.

**LIVE IN TARADALE**

But see first

THE

**TARADALE SPECIALISTS**



FRED TWYFORD Ph. 37-292    MARGARET TINDALE Ph. 443-911    PAMELA TREMAIN Ph. 447-787

TARADALE  
GREENMEADOWS  
Ph 442-047  
TARADALE  
GREENMEADOWS

"REMAINS OF TARADALE" "REMAINS OF TARADALE" "REMAINS OF TARADALE" "REMAINS OF TARADALE" "REMAINS OF TARADALE"

ONE of Napier's most heavily used passive reserves, Anderson Park, at Greenmeadows was once Napier's racecourse.

The Napier Park Racing Club set up its headquarters at the 40-hectare site in 1886 and it was a racecourse till 1961, when the club transferred its activities to the Hastings course.

Napier City Council acquired the area under the Public Works Act in 1962 and proposed to use it for housing developments. However, it

became instead an important part of the city's green belt and recreational area.

In 1931 the park area was the site of a vast field hospital for those injured in the earthquake.

The park was named after Mr Haakell Anderson, one of the founders of Napier-based J. N. Anderson and Son Ltd. wholesale nurserymen, who gave the city \$40,000 that was used for the park's development.



## Peter Foote

**GENTS HAIRDRESSER**

Gloucester St.    Taradale

*Expert haircutting at reasonable rates.*

*Discounted prices for Senior Citizens all week*

Retailing in Cigarettes, Tobaccos, Cigars, Leather Goods, Men's Toiletries.

Agents for: H. Lines Shoes and Bag Repairs.  
Taylor's Dry Cleaning Services  
Golden Kiwi Lotteries

**HOURS: Mon-Thurs 7.30-5.00. Fri. 7.30-8.00. Sat. CLOSED**



For all your carrying requirements  
**SEE US FIRST**  
**McDONALD TRANSPORT CO LTD**



Meanees Rd. Taradale. Ph 442178

*JOYS.*

M.N.Z.E.A.

2 Puketapu Rd.  
 TARADALE

**REGISTERED ELECTROLOGIST**  
 PHONE 448382

**ALWAYS**  
**The House for Better Service**  
 MOST MODERN AND FULLY EQUIPPED  
 GARAGE IN HAWKE'S BAY



**RELIANCE AUTO SERVICES**

(1974) LTD

LEE RD • TARADALE • PHONE 442126

formerly

E V HOWARD

PROGRESSIVE GARAGE — TARADALE  
 PHONES: Garage 131 M House 131 S

**TRAMPING  
 CAMPING**

**AND ALL OUTDOOR PURSUITS  
 THE RIGHT GEAR IS A MUST**

**AND WE STOCK IT ALL!**

- Swandribs
- Woolen Clothing
- Bush Packs & Tents
- Cooking Utensils
- Waterproof Gear
- Wool Socks, Hats
- Gloves etc.
- Gumboots & Boots
- Bush Shirts & Leggings

SEE US FIRST

**NEAL'S ARMY STORE**

Gloucester St Taradale Phone 442276

Hastings St Napier Phone 58605

**BRIERS**

From the charm of a  
 BYGONE ERA

Come

GEORGIAN WICKER CHAIRS  
 YESTERYEAR PRINTS  
 PORCELAIN HERITAGE DOLLS  
 DRIED FLOWERS and  
 FRAGRANCES

From the cottage collection  
 NATURAL CALICO  
 LAMPSHADES and  
 LACE CUSHIONS

304 GLOUCESTER ST TARADALE  
 PHONE 444417

MERVYN ADAMS

**SAVE \$15**

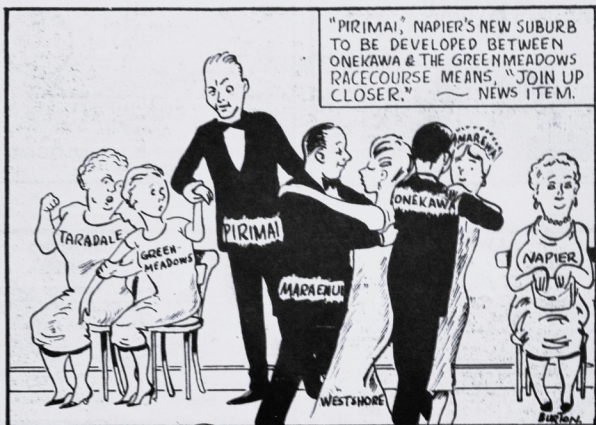
ONLY WHILE STOCKS LAST!

Comfortable casuals in leather with hardwearing soles. Available in assorted colours.

WERE \$74.95 pr

**\$59.95**

**WATSONS SHOES**  
 Taradale Ph 442290



"Watch your step my girl, or you'll be married into that family too!"

— Cartoonist's message to Greenmeadows and Taradale in the *Daily Telegraph* of April 29, 1961.

## Celebrating with a Dinner Party?



We can help you with your meal. Bring your favourite recipe in, or phone us, we will supply that special cut. (48 hours notice may be needed).

- \* CHICKEN \* VEAL \* PORK
- \* BEEF \* LAMB \* HOGGET

### CELEBRATION SPECIALS

KILO PACKS BACON	\$5.99
2KG BEEF SAUSAGES	\$3.50 <small>bag</small>
STEAK N' KIDNEY	\$2.99 <small>kg</small>

(Butcher American Cup Special)

### CENTENNIAL CELEBRATIONS

**TARADALE MEAT  
& POULTRY MARKET**

PHONE 442357



Congratulations to Taradale  
in its Centennial Year



**Westpac**  
We're here to help you.

Westpac is proud to be associated with Taradale and to have helped in the progress and development of the area.

*follow the Cobblestones to the  
shop with the best selection of  
fashion Jeans in the Bay*

*Jesse James*

TARADALE

## Hurdler



NOTABLE sportsmen tracing at Taradale have included hurdler M. Dutch Holland (above). He won a silver medal (40 yards hurdles) and a bronze (4 x 440 yards relay) at the Auckland Empire Games in 1964.

He also represented New Zealand at the Olympic Games in London in 1948 and in Helsinki in 1952, winning a bronze medal in the 400 metres hurdles in Helsinki.

## Talent from Taradale Olympic Games boxer

PADDY DONOVAN, star product of the Greendale Boxing Club, won bronze medals for New Zealand at the 1958 and 1962 Empire Games, and also represented New Zealand at the Olympics in 1956 and 1964.

He is seen below (at left in the

picture) having a workout with fellow New Zealand team member B Maunsell at the 1964 Olympics.

The Greendale club was formed in 1945, meeting first in the Labour Hall, then at the Napier Park racecourse, and later at Tommy Donovan's barn.



## Javelin-thrower



TARADALE javelin-thrower Mike O'Rourke — Olympic and Commonwealth Games representative in the late 1970s and '80s. He won a silver medal at the Commonwealth Games in Edmonton, Canada, in 1978.

### GEMTIME JEWELLERS

For the very best



QUALITY  
VALUE  
PRICE

for all your

JEWELLERY, WATCH, CRYSTAL,  
SILVERWARE, FIGURINE, ENGRAVING  
& REPAIR REQUIREMENTS

shop at

Available now at your local Gemtime Jeweller.

### Ian Carr Jeweller

Taradale Shopping Centre, Phone 447 288.

WE MOVE WITH THE TIMES



Only a Gemtime Jeweller can offer so much.

# Hers



BENDON  
PICKABERRY  
KOKO

PHONE  
442286

## Rugby

THE Taradale Rugby Club can boast one of the best records in inter-city competition with its 11 championship titles, bettered only by Napier Old Boys and Colenso-Pirate.

Ten of those Maddison Trophy successes were between 1967 and 1968, with seven in succession from 1971.

The club was formed in 1888, has Taradale Park as its headquarters, and emerged as a senior force by winning its first senior title in 1947.

Taradale's most celebrated player was 1964 and '67-70 All Black centre Bill Davis, who played for the club from 1962 to 1971. Davis, a key member of Hawke's Bay Ranfurly Shield teams of the late 1960s, played 53 times (including 11 tests) for his country.

He also achieved double All Black status by winning selection in New Zealand softball teams in 1973 and 1978.

Two members of this year's senior Taradale rugby lineup, halfback Paul Blake and flanker Craig Ferguson, have gained national honours. Blake has worn the New Zealand Maoris jersey on several occasions, while Ferguson was a New Zealand colt and junior in the early 1980s.



THE 1981 Taradale senior rugby team, joint winners of the Maddison Trophy with Marlborough. They are from left: Back row, Craig Faulstich, Craig Ferguson, Neil Porter, Brett Smith, John Tickner, Brent Dewar, Kit Brooks, Raymond Blake; middle row, Graham Lewis (coach), Scott Wadd, Rex Doldan, Kerry Kupa, Sean McKinley, Bobby Crawford, Rob Wheatley, Reka Eden, Phil Sheewright (manager); front row, Ralph Sparks (club captain), Bruce Lewis, Brenton Bower, Tony Porter, Paul Balke (captain), Billy Henderson, Hugh Paterson, Mike Combs (club president).

## Leading players from Taradale



B A Griensole, All Black 1928-29.



E R G Steere, All Black 1929-31.



R N Williams, All Black 1932.



Bill Davis, All Black 1963-64 and '67-70.



Paul Blake, NZ Maori rugby rep.



Craig Ferguson, NZ rugby colt and junior.



Scott Briscoe, 'Young NZ' cricket rep.



Ervin McSweeney, NZ 'one-day' wicket-keeper.

## Cricket

THE Taradale Cricket Club took many years to establish itself as a force in Hawke's Bay senior competition but is now regarded as the club with the greatest strength and depth in the province.

The sport in Taradale had hazy beginnings, with reports that games were played as early as 1871, but the club was not formed till August 1, 1883.

Pictorial records show Taradale won the 1896-97 Hawke's Bay Junior championship, and the club finally achieved senior status in 1969-70.

Relegated to the 1976-77 season, Taradale made an emphatic comeback with recent New Zealand one-day

wicketkeeper Ervin McSweeney who subsequently moved to Wellington, leading the seniors to their first-ever Hawke's Bay senior title the following season.

In recent seasons the club has concentrated on building a sound base and has international Martin Crowe as an affiliated member. Because of heavy commitments, Crowe has made few visits to Napier, but the club also has a Young New Zealand representative in Scott Briscoe, who is also a Central Districts batsman and Hawke's Bay captain.

The club has also been a leader in the importing of English players in recent seasons.



THE Taradale senior cricket XI of 1976. From left: Back row, D M Jamieson, R Lumaden, D Boyd, K Hawton, R Atkins, R Roy; middle row, C MacDonald (scorer), J Storker, M Flavell, R Bryan, D Cleverley (coach); front row, G Smith, M Roche, Mr J Spence (president), R Hamilton.



THREE descendants of participants in the Battle of Omarunui pictured on October 12, 1966, with Mr. H. Phillips, chairman of the Hawke's Bay regional committee of the National Historic Places Trust, after he had placed a wreath to mark the centenary of the battle.

The battle was fought between European soldiers and settlers and Hawke's Bay Maoris on the one side and Haubau invaders threatening to move on the town of Napier.

Those shown with Mr. Phillips are (front) Edward James and Miss E. Hamlin, descendants of a European who fought in the battle, and Mr. M. H. Tomoana, whose father had led local Maoris.

The memorial stands beside Omarunui Road, opposite the scene of the engagement.

# Kyle Symons Ltd

Electrical Contractors  
Electrical Retailers  
Electrical Servicing



COMMERCIAL  
DOMESTIC  
and RURAL

52 years of service  
to Taradale



Kyle Symons Ltd was established in 1924 by Kyle Symons in Gobble Road, Taradale. He then purchased land at the corner of Gloucester and White Street in 1942. Shifted workshop from Gobble Road to new site and rebuilt.



Workshop burnt out in 1944 and rebuilt in 1945, added new shop 1961. Built present building in 1984. 52 years of service to Taradale.



# Jessica

Congratulates Taradale  
on its centenary



Cane furniture is over  
100 years old and still  
going strong

Gloucester St Taradale  
Phone 447551  
Hastings St Napier Ph 54134



Have lunch at  
Taradale Estate today.

McWILLIAM'S

AGENCY NINE



FIRST-DAY pupils at Taradale High School — 182 third-formers — lined up with teachers and guests in the school grounds on February 3, 1970. Diane Willis had arrived at the entrance at 5.30am to earn the distinction of being the school's first pupil.



MR R B TWADDLE, principal of Taradale High School from its 1970 opening till he retired in 1984.



THE Hawke's Bay Community College under construction at the end of 1974. It opened to its first classes of apprentices the following year.

This photograph shows temporary classroom blocks at right, the library (centre left), and the complete workshop block.

In 1808, Mr and Mrs F Hetley bought the old-established Otatara Estate at Taradale, and in 1860 Mrs Margaret Hetley, now widowed, gave 30 hectares to "the people of Hawke's Bay" as a site for a university.

The gift was a memorial to her husband and to commemorate the Hawke's Bay Centennial, which had fallen in 1868.

The idea of a university for the region was modified to that of a "community college", a new concept in tertiary education involving less than a university but more than a technical institute, and this project went ahead on the Hetley land. It was to be the first community college in New Zealand. (See also Page 58).



MR J N MORRIS, principal of Taradale Intermediate School from its opening in 1987. He is retiring this month.

# VILLAGE NEST


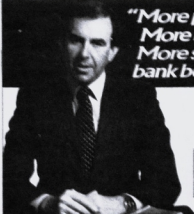


RESTAURANT B.Y.O.

## TARADALE

OPEN 6pm-12pm TUES-SATURDAY  
367 GLOUCESTER ST. PHONE 445343

*"More people.  
More branches.  
More services. No  
bank beats Your Bank."*



### LOCKYERS of TARADALE FOR SPORTS

Hawke's Bay's Leading Specialists for  
**FISHING SHOOTING  
GENERAL SPORTING GOODS  
and TRAVELBAGS**

*Taradale's First Sports Store*  
Established in 1963

### Lockyers Sports Supplies Ltd

283 GLOUCESTER ST  
VISA Phone (070) 447-056 TARADALE  
BANK CARD



### Calypso Seafoods

Taradale  
Phone 448577

Try our

### LUNCH-TIME SPECIALS

and for the  
**BEST FISH and CHIPS  
IN TOWN**



### CONGRATULATIONS TARADALE ON YOUR CENTENARY

*OUR SERVICES WILL  
CONTINUE TO GROW  
ALONGSIDE YOU*

#### PAYROLL SERVICES:

- CASH COLLECTION
- PAYROLL DELIVERY
- RETAIL CASH BANKED
- WAGE PACKETING
- TWO KEY SAFES

#### SECURITY SERVICES

- SECURITY PATROLS
- GUARD SERVICES
- CARDAX ACCESS CONTROL
- NEVA ALONE SERVICE
- ALARM MONITORING

TELEPHONE:  
NAPIER 445801  
AFTER HOURS NAPIER 57210



### CONGRATULATIONS



*We are proud to be part of Taradale  
(if only 9 years)*

We serve the Community every day of the Year

- |          |             |            |
|----------|-------------|------------|
| PETROL   | BATTERIES   | GROCERIES  |
| DIESEL   | PARTY ICE   | ICE CREAM  |
| KEROSENE | ACCESSORIES | SWEETS     |
| COAL     | FIREWOOD    | CIGARETTES |

VIDEO HIRE No charge for membership  
TRAILER HIRE Garden furniture & car trailers  
TOW WAGON Authorised AA Service

#### FULL A GRADE WORKSHOP

Repairs, Overhauls etc CNG & LPG Conversions & Warrants

THE HOME OF

### The TARADALE TYRE CENTRE

FULL TYRE SERVICES



- |                                  |                  |
|----------------------------------|------------------|
| STOCK RECAPS                     | NEW TYRES        |
| SECOND HAND TYRES                | PUNCTURE SERVICE |
| NEW TUBES                        | WHEEL ALIGNMENTS |
| REPCO COMPUTERISED WHEEL BALANCE |                  |
| WE TRADE TYRES                   |                  |



PERMANENT DISCOUNT PRICES ON ALL TYRES

WE SELL  
DUNLOP • BRIDGESTONE • YOKOHAMA  
ALL OTHER BRANDS AVAILABLE

OPEN SATURDAY MORNINGS

### SOUTHERN AUTO SERVICES

366 Gloucester St

Taradale

THE TEAM: Franca, Barrie & Pete O'Brien  
and mechanic Roy Bould

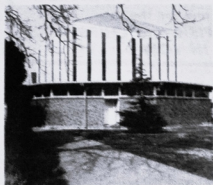


TARADALE'S first Presbyterian Church was in Mecanee Road, opposite John's Road. It was dedicated on September 30, 1906.

However, because of frequent flooding the church was moved in 1906 to Napier Road, now Gloucester Street. Traction engines were used to haul the building to the new site.

The original church was moved to the rear of the site in 1953 to make way for the construction of the new St Columba's, which was designed by Mr. B. Martin Yeoman, built at a cost of \$36,411, and dedicated on November 29, 1968.

A congregation of about 350 is seen here listening to the church's minister, the Rev. Duncan Jamieson, who was at that time also moderator of the Hawke's Bay Presbytery, at the dedication of the new church.



The exterior of the new St Columba's.



THE old St Columba's Church on its Gloucester Street site, flanked by its social hall, built in 1916, and manse.

# EXCLUSIVE TO SHU-BAR

"ROAD REBEL"

Lace

**36.95**

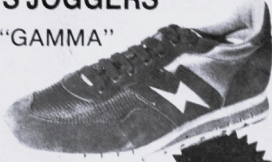


SIZES 3 to 11  
COLOURS: GREY & NAVY  
ALSO AVAILABLE WITH  
VELCRO FASTENERS

**39.95**

"SPORTS JOGGERS"

"GAMMA"



Sizes 3 to 11  
COLOURS: GREY & NAVY  
LACE ONLY  
SPECIAL CUSHION SOLE

**44.95**



# SHU-BAR



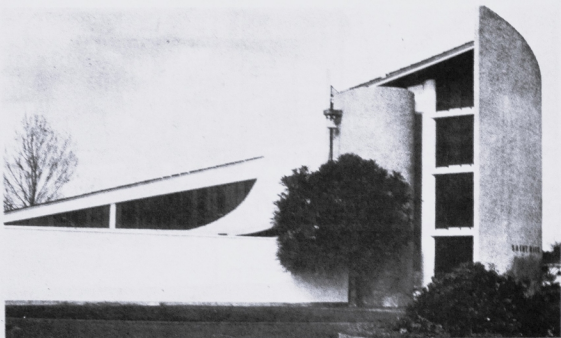
HASTINGS — NAPIER — TARADALE — MAREWA — WAIPUKURAU — HAVELock NORTH — FLAXMERE — WAIROA



THE new St Mary's Roman Catholic Church in Osler Road.

The church bought the land for it in 1969, but it was in October 1972 that the building was ready and blessed.

The complex now includes a parish house and hall.



WHEN Sister Mabel Morris (pictured) retired as Taradale's longest-serving Plunket nurse in 1970 she had been in the job since 1939, and "assistant mother" to about 4500 babies.

First moves to form a separate Taradale Plunket Society branch were made at the end of 1946 and the branch was founded a year or so later.

The Plunket rooms, which are also a World War 2 memorial, were officially opened in a delayed ceremony on February 17, 1962.

The memorial tablets were unveiled by the Minister of Internal Affairs, Mr W A Bodkin, and the rooms were declared open by Mrs Bodkin, who was the New Zealand president of the Plunket Society.

'Assistant  
mother'  
to 4500

stafford ellinson A Century Ahead  
International



Never has so much craft been put  
into a single collection of men's clothing

PREBBLE'S MENSWEAR  
CLOTHES OF DISTINCTION

JOHN & MARIANNE GRAY  
341 GLOUCESTER ST, TARADALE

kelly brown's

FURNITURE COURT

"I invite you to come in and browse around. We have an excellent selection of lounge and dining furniture, beds and bedding, curtains and fabrics.

It is our policy to stock only quality merchandise at affordable prices.

Unfortunately GST will drive our prices up. As there is no sales tax on furnishings at present, GST will definitely push prices up. Buy now!"



KELLY BROWN  
MANAGING DIRECTOR

KELLY BROWN'S  
LATE NIGHT FRIDAY — OPEN SATURDAY  
GLOUCESTER STREET, TARADALE. PH. 447-243



COUNCILLORS and mayors at the final meeting of the Taradale Borough Council on March 26, 1968. From left round the table they were: Councillors R A Bayliss, D O Haskell (Taradale deputy Mayor), C G Thomas and L Morgan, Mr L V Leman (town clerk), Mr Peter Tail (Mayor of Napier), Mr A W Miller (Taradale Mayor), Mr A M Linton (Mayor of Rotorua), and councillors J Warnock, N G Cooper and B A O Marshall.

As a token of the union of Taradale Borough with Napier City, Mr Miller handed his chain of office to the Napier Mayor, Mr Peter Tail (now Sir Peter), during the final borough council meeting.

According to Dr M D N Campbell's centennial history of Napier, Mr Miller and his council disliked the city's proposal of a merger when it was put forward in 1965.

However, questions of road finance, and the prospects of additional subsidy money from the National Roads Board, persuaded them to change their minds, and Taradale residents finally approved the amalgamation in a March 1966 poll by 71 per cent to 29 per cent. The amalgamation became official on April 1.

Taradale's 6450 people lifted the population of Napier to 37,000, making it New Zealand's tenth largest city.

## Taradale's leaders

### TOWN BOARD CHAIRMEN

J Drummond	.....	1886 - 1890
Geo Rymer	.....	1890 - 1892
W Waterhouse	.....	1892 - 1894
W Harpham	.....	1894 - 1896
I Jeffares	.....	1896 - 1898
G Ridley	.....	1898 - 1900
W Waterhouse	.....	1900 - 1902
R J Pothan	.....	1902 - 1904
W Waterhouse	.....	1904 - 1908
W H C Howard	.....	1908 - 1916
W G Jarvis	.....	1916 - 1922
J Ellis	.....	1922 - 1926
H W Whitton	.....	1926 - 1928
R D Kelly	.....	1928 - 1932
J Williamson	.....	1932 - 1944
J F Ewan	.....	1944 - 1946
F G Yeo	.....	1946 - 1960
J F Ewan	.....	1960 - 1963

### BOROUGH MAYORS

F G Yeo	.....	1963 - 1969
A W Miller	.....	1969 - 1968

# McCARTHY'S

**BOOKSELLERS & STATIONERS**

for over "80 years" we have served  
NAPIER'S SUBURBAN PUBLIC

**AHURIRI**  
1904-1959

**MARAENUI**  
1959-1970

**TARADALE**  
1970-1988



We are pleased to continue our two generations of business in the "New Look" Taradale Shopping Centre

OUR PRIORITY  
**QUALITY — VALUE — SERVICE**

at  
Our Nationwide Stationer's Store



William Harpham



George Rymer

## CATERERS INCORPORATED

PHONE 68464  
444031 — 449900



## THE CATERING PROFESSIONALS

There are few things more enjoyable than a fine meal, and Caterers Inc. believes that good food, like good wine, requires expert care and attention to detail.

- FOR THAT
- \* DINNER PARTY
  - \* WEDDING
  - \* 21st CELEBRATION
  - \* SOCIAL CLUB FUNCTION
  - \* IMPORTANT BUSINESS LUNCHEON
  - \* HOME ENTERTAINING
  - \* or LARGE SCALE EVENT

\* Let our friendly and efficient staff ensure a successful occasion for you and your guests.

## CATERERS INCORPORATED

HAWKE'S BAY'S LEADING  
CATERING CONSULTANTS

PHONE 68464 — 444031 — 449900

## Salon Edythe

(Midge Matheson, Proprietress)  
Otago Soldier's Memorial

Specialist in  
WATER WAVING, MANICURES and HAIRCUTS.  
Satisfaction Guaranteed. Prices Reasonable.

Phone 447165  
Children's Haircut 6d

## SWAN LAKE BEAUTY SALON

1 Neeve Rd Taradale

Ph 447165

## Congratulations TARADALE

from the LONGEST  
ESTABLISHED SALON  
AND STAFF in  
Taradale

We've changed the  
name, the staff,  
the techniques...  
and the prices but...

the friendly expert  
attention from our  
highly qualified staff  
Tui, Mary, Pam & June  
NEVER  
CHANGES

Gloucester St.

## Gilmore's

Phone 442355



have been baby,  
children's and  
ladies nightwear  
and underwear  
specialists for  
over a third of  
the last 100yrs.

We plan to continue  
to grow with Taradale



Congratulations and  
Best Wishes Taradale  
for this Centennial Celebration — and for the next.

## Congratulations Taradale




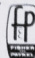
## TARADALE POST OFFICE



Proud to be associated with  
the Taradale Households & Community  
during the past 100 years



## FORGET THE OLD... HERE'S THE NEW!!

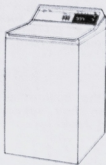
**Kelvinator**   
New ideas to make life easy  
**ECS** **ELECTRONIC**   
**AUTO-WASHER**

## Gentle Annie

- BIG 5kg (10lb)  
wash capacity...
- 5 wash, 3 spin  
cycles...
- Efficient, reliable  
and quiet...  
only...

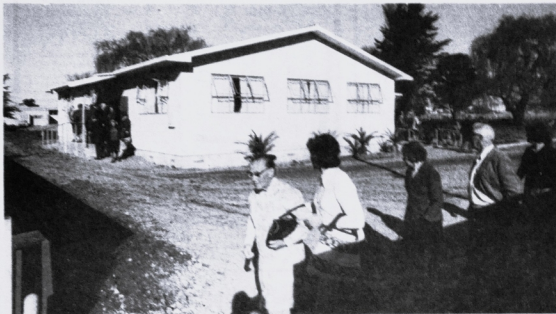
**\$1299**

**TOP TRADE IN  
OFFERED!!**



**Duckyworth's**  
**APPLIANCE SUPER SHOPS**

GLOUCESTER STREET, TARADALE 442709



OUTSIDE and inside the Taradale Friendship Centre on the building's opening day, August 12, 1977.

The building has been extended twice since — by six metres within six months of its opening, and six metres more in 1979.

Members recently voted to go ahead with a further \$50,000 extension, subject to finance.

Membership, originally currently stands at about 120.

The centre's building in White Street, erected at a cost of \$65,000, was opened by the MP for Hawke's Bay, Mr Dick Harrison, later Sir Richard Harrison, Speaker of the House.

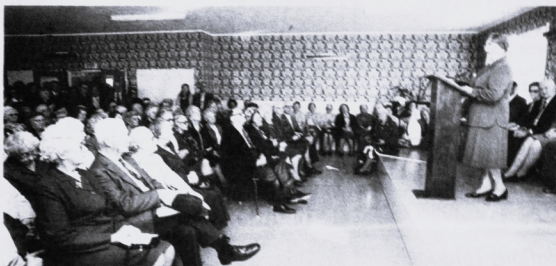
The centre was the brainchild of Mrs Hazel Wheatley (later Dawson), with the support of the Kerokipo branch of the Women's Division of Federated Farmers.

Mrs Dawson is pictured speaking at the opening. Sitting at far right is the then Napier MP Mr Gordon Christie.

The centre was set up to provide a sense of companionship and friendship for senior citizens, and to provide a hot meal each weekday at a reasonable cost.

Meals are prepared by voluntary groups and organisations.

The centre started in the Taradale Rugby Football Club gymnasium in 1973, then moved to the St John Ambulance hall before the move to have a building of its own.



## CONGRATULATIONS TARADALE

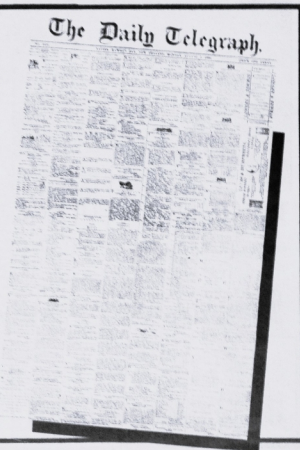
The Daily Telegraph is proud to be associated with Taradale's Centennial Celebrations.

The Daily Telegraph's commitment to the people of Taradale stretches back a long, long way and we have expanded our services as Taradale has grown, 'til the present day where 88% of Taradale's population read the Daily Telegraph.

We thank the Businesses and people of Taradale for their support over the last century and look forward to sharing the next 100 years with you.

# The Daily Telegraph

OUR 116th YEAR





DR GERALD ARBUCKLE, the then rector of Mt St Mary's, in the seminary's new library, built in 1980.


IF IT'S history you want to find in Taradale and Greenmeadows you can't do much better than go to the Mt St Mary's Seminary, "the Mission", as it is still widely known.

Not only does its own history trace back to the very earliest days of the district, with its establishment in Meeanee in 1858, it also claims for the observatory once associated with it the world's first photograph of Halley's Comet on its 1910 visit, and its library of 40,000 books includes some of the world's rarest and oldest printed volumes.


Hinges on the doors of the new library building came from the old seminary chapel at Meeanee.



THE oldest book in the collection of rare editions at the seminary — an encyclopaedia written in Latin and published in 1481, only 14 years after the invention of printing. The library also has an edition of Thomas a Kempis' of the Imitation of Christ printed about that time. The new library includes a temperature-controlled security room for the housing of these treasures.



For friendly  
Personal Service  
See Barry, Tony  
and the girls



For all your Health, Beauty and  
Photographic requirements  
**LENNOX & GEE CHEMISTS**  
GLOUCESTER ST TARADALE  
PHONE 442852  
Your local chemist...so close to you.





**TARADALE'S  
MOTEL**  
*Colonial  
Lodge*  
**Refurbished  
for  
1986**

A facility Taradale can be proud of  
A first class Motel in every way

164 Gloucester St. Phone 447788

# We've put lending into perspective.



However you look at it, borrowing money can be a daunting task. But no more. At United, we've taken a new look at lending — and we've developed a whole new series of loan packages. What's more, we've looked at it from your point of view. So our loans have greater flexibility, more options, fewer restrictions than ever before.

We can lend to anyone who has the ability to repay the loan. We'll lend more, spread the repayments over the term that suits you best — and give you greater opportunities to use your money better, throughout the term of your loan.

Come and take a look at the whole new perspective we've brought to lending. You can bank on United for a better deal, because we see things your way. Talk to Peter Heather, Branch Manager, or Sally Ross, Branch Assistant, about your lending enquiries.

## CONGRATULATIONS TO TARADALE ON ACHIEVING 100 YEARS OF GROWTH.



273 Gloucester Street,  
Taradale  
Ph. 442460



**AIKMAN ELECTRICAL LTD**  
REGISTERED ELECTRICAL CONTRACTORS  
5 DEVONSHIRE PLACE — TARADALE  
PO Box 7086 PHONE 442353

**Congratulate  
TARADALE on its CENTENNIAL**

We are specialists in  
Industrial, Commercial, Horticultural &  
Domestic Installation & Maintenance

no job too big or too small  
CONTACT OUR EFFICIENT, OBLIGING TRADESMEN

For the widest range of GIFT lines, including  
POTTERY, BRASS, CHINA, JEWELLERY  
LEATHERWARE ETC and

**TARADALE CENTENNIAL SPOONS**

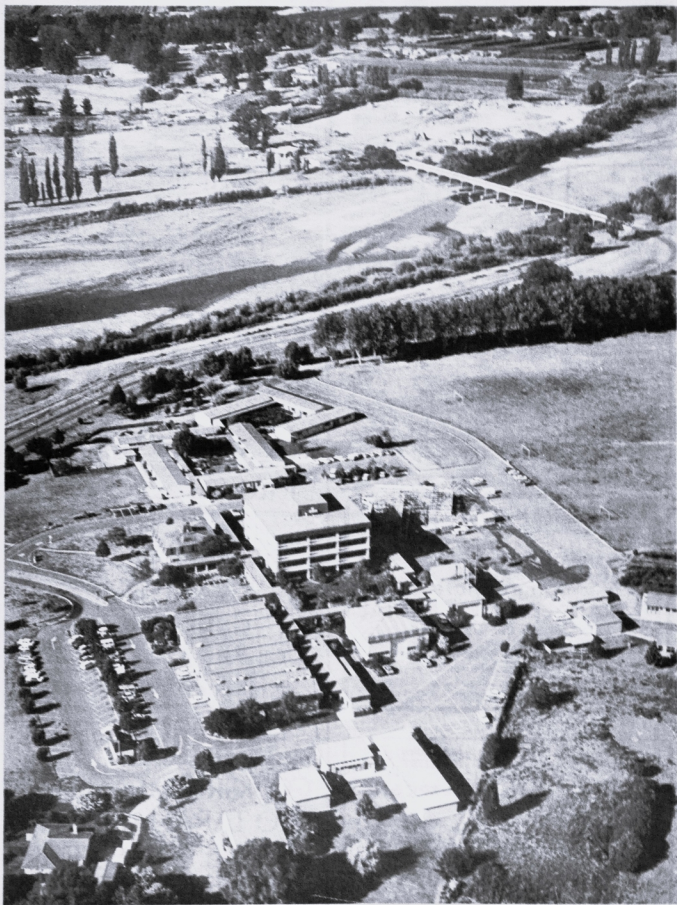


See  
**JOAN & LEN CAMERON**  
Proud new owners of  
**The Craftsman's Giftworld**

Gloucester St Taradale Phone 447314



# *College's tranquil setting*



THE Hawke's Bay Community College photographed in 1985 from the air. Under construction to the right of the central block is a new administration building. At top right of the picture is the Redcliffe Bridge.



CONTRACTOR for the new shopping precinct in Taradale's Gloucester Street Mr Keith Hulena helping install seats as the work reached its final stages this week.

Yvonne, Alison, Verity and Helen welcome you to their sunny warm salon. We can assure you of personal service using the most modern, up to date methods of hair styling for all the family.

For the very best results we use  
L'ORÉAL - HÉLÈNE CURTIÉ - WELLA  
Hair Care Products

**FAYE'S SALON**  
Est 1974

2 Puketapu Rd Taradale  
PH 448542



## Centennial celebrations

- |                   |   |
|-------------------|---|
| August 2          | Grand Parade, 11.30am.  |
| August 7, 8, 9    | "Top school" contest, 1pm                                     |
| August 10         | Art and craft fair  |
| August 11         | Centennial celebration service, 2.30pm                        |
| August 14         | Re-enactment of last Taradale Borough Council meeting, 7.30pm |
| August 16         | Early settlers' day   |
| August 19, 20     | Toastmasters v High School debate.                            |
| August 21, 22, 23 | International day, 12.30pm                                    |
| August 23, 24     | 100 Years of Family Fashion                                   |
| August 30         | Antique fair  |
|                   | RSA Concert Party concert.                                    |
|                   | Pottery exhibition and Mission                                |
|                   | Vinery display (at old St Mary's, Meeanee Road)               |
|                   | Centennial dinner and ball                                    |

**Stuart Lothian**  
THE BLIND MAN  
Box 7070  
TARADALE

Phone  
**442611**

**VENETIAN  
BLIND  
MANUFACTURER**

*Same Day Service  
on Repairs and  
Lauders*

*Flyscreens and Doors  
made to order*

**ROLLER BLINDS  
ALSO AVAILABLE**

Phone for a quote  
at no obligation



**APPLETON  
PIANOS**

DEVONSHIRE PLACE TARADALE

## CENTENNIAL SALE

**Taradale celebrates its Centenary.**

*APPLETONS celebrate nearly two centuries in the piano trade, they also celebrate moving into new premises in Taradale.*

**SAVE at LEAST \$255 on  
a NEW PIANO**

**WAGNER PIANOS from \$2295**

Similar savings on used pianos  
(All delivered, tuned and guaranteed)

**SEE THE SPECIALIST, NOT A SALES PERSON**

Showroom open Wednesday, Friday and on Saturday morning, or by appointment.

**PHONE 445312 anytime.**

## TREMAIN TRAVEL SERVICES

Under the Management of



Mrs BEV SIMONS

Reservations for . . .

ALL INTERNAL AND  
INTERNATIONAL AIR  
SERVICES, RAIL, COACH,  
FERRY, MT COOK,  
NEWMANS

*Call in and see  
Mrs Bev Simons at*

**TREMAIN  
TRAVEL SERVICES**

Cnr Gloucester Street &  
Puketapu Road, Taradale

Phone 442-047



# OLD-FASHIONED VALUES...

**AND OLD-FASHIONED SERVICE!**



- \* Guaranteed premium quality
- \* White but may be tinted to pastel colours
- \* 4-litre size

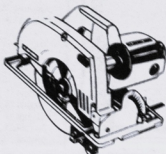
ACRYLIC GLOSS  
VINYL SATIN PLASTIC  
ACRYLIC MATT  
HIGH GLOSS ENAMEL  
ALL PURPOSE  
UNDERCOAT

*All at one old-fashioned price*

**\$29<sup>95</sup>**



**HITACHI PSU8 8 1/4" CIRCULAR SAW**



- \* Double insulated
- \* Industrial Quality Tool
- \* Strong, robust casing, will not break or crack, even if dropped

\* Reg Retail \$421.00

*At the old-fashioned price of just*

**\$299<sup>00</sup>**



**STANDARD STEP STOOL**

Ideal for home or office. Solidly constructed with a chrome finish, padded vinyl lift-up seat and recessed rubber steps. (Item 41)



**\$29<sup>95</sup>**



**AT OLD-FASHIONED PRICES**



## SCOTT & RICKETTS

TARADALE  
Phone 442-004

NAPIER  
Phone 57-586



CLUDCARD  
ISSUED BY SCOTT & RICKETTS  
VALID UNTIL 31/12/90

Ask for details

And most major credit cards