

NAPIER OPERATIC SOCIETY

A Great Face for Radio



17 Nov - 2 Dec 2017

Tabard Restaurant Theatre
Coronation St, Ahuriri Napier

***A comedic look behind the
scenes of a 60's radio station***

*Featuring many of your
favourite songs from the era*

An Amanda Stone Production



PRESIDENTS MESSAGE

Welcome to the Tabard Theatre and our latest production **A GREAT FACE FOR RADIO.**

The Society is proud to have the production team led by well known and respected director Wendy Revell who has brought to life good 'old school' Kiwi humour. Set in the 1960's in a radio station the show also features great music of that era which will be familiar to most.

Add to the mix the skills of musical director and vocal coach Mark Oldershaw and choreographer Roxanne Batkins and I think you'll find we have a winner!!!

Thank you for supporting Napier Operatic, for without an audience we have nothing.

Now relax and enjoy your trip down memory lane.

Tessa-May Brown
President



An Amanda Stone Production



SARAH ERICKSEN

Your home, your future, your choice.



Call me today on 027 555 6785 to have a conversation about your property. **TREMAINS**

Wendy Revell

A note from the Director

This End-of-Year Tabard production has proven to be an interesting peek into life within a radio station of the 1960's.

Wellington based author, Amanda Stone, is a writer of many pantomimes and short plays for both adults and children alike.

For this play, originally set in the 1950's, she combined a selection of her original scripts and allowed me to reset this musical into the 60's. I have really enjoyed researching the music and making careful selection from the many popular tunes of that era.

A Great Face for Radio is a light hearted look into the 'theatre of life' behind the walls of a rather extraordinary radio station. It is humorous, facetious and at times a little naughty, all the things that make life interesting.

Again it has been a privilege to share my ideas with a willing team of players. My thanks must go to the Napier Operatic Society for the opportunity, and the wonderful cast and crew, for their enthusiastic endeavour.

A special thanks to Mark, Roxanne, Sally, Davina, Mary, Kendall, Tony and all the artistic team, you have made it all possible. *Enjoy.*



Roxanne Batkins

Choreographer

Rox has been in her element with this show having been brought up with the music of the sixties. A first time working with Wendy and Mark, Rox has felt privileged to be part of this creative experience. Rox has been involved both on and offstage for many years and plans many more to come.

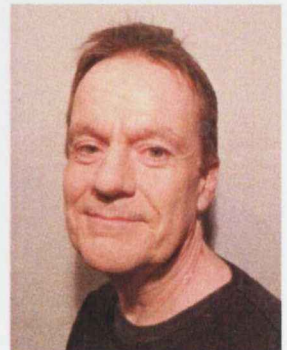
Mark Oldershaw

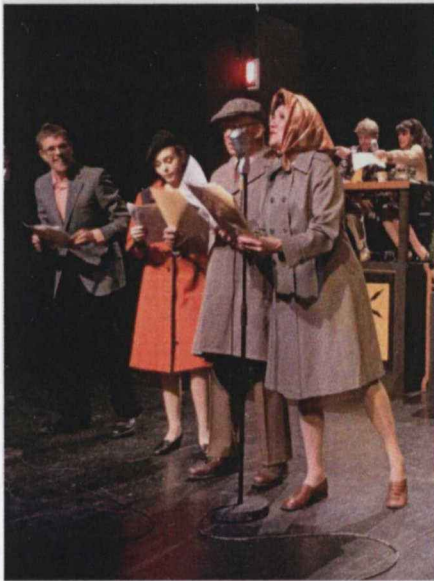
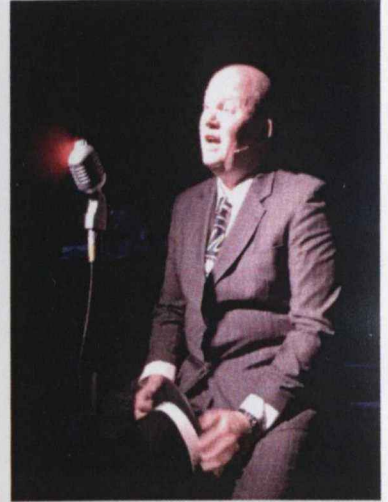
Musical Director

Mark is an experienced musical director, conductor, music adjudicator and tutor, having worked with a number of high profile musical ensembles and soloists in New Zealand and internationally. Although officially retired as a musician Mark has performed in many countries and occasionally helps out in concert work when bands are desperate or time allows.

Mark has a long history with NOS, both during his time in Hawke's Bay and when living in Wellington. His last show with NOS was as Musical Director of Mary Poppins earlier this year.

Mark is delighted to once again be back at the Tabard and working with such a fun and talented cast and crew, and such a great band.





CAST LIST (CHARACTERS)

Carlee Atkin	Candy
Ali Beal	Beryl the tea lady
Sean Boston	Billy the Sound Effects Boy
Sharon Devereux	Cynthia DJ
Sarah Ericksen	Ida the tea lady
Stephen Evans	Gary Gusher DJ
Martin Good	Producer
Penny Good	Producer's assistant
Victoria Logan	Miss Taihape
David Moore	Derek/ Narrator
Farani Penitito	Lead vocalist
Simeon Ria	Lead vocalist

Ensemble: **Brooke Behague, Dominic Bolton, Penny Good, Hannah Oldershaw, Danica Ondrušová, Penina Ria and Lexina Wyatt**





Carlee Atkin

Carlee is from a musical background, fronting bands and being part of a lot of family sing-a-longs. This is Carlee's first foray on stage and she has loved pushing her boundaries, and finding her thespian roots.

Ali Beal

Cuppa Tea love? Beryl is a gem, probably a real rough as diamond, but a wonderful character to play. I'm grateful for the opportunity to hangout and work with our NOS family. Another amazing experience working with Wendy, cast, crew and NOS. Merry Christmas everyone!!

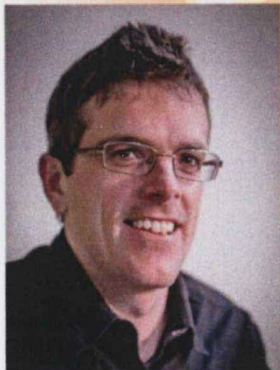
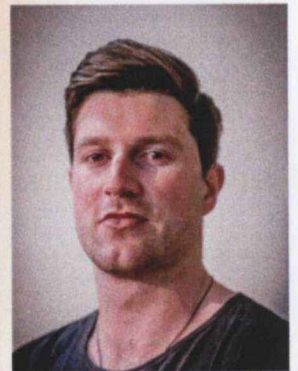


Brooke Behague

A Great Face for Radio is Brooke's second show this year. Earlier this year Brooke was on-stage in the fabulous production of Mary Poppins. Brooke's previous stage experience includes ensemble and lead roles in theatre school productions, as well as high school shows. Brooke has had a great time getting to know this cast, and hopes you enjoy this hilarious show.

Dominic Bolton

This is Dom's first show as he's finally been in one spot for long enough to give it a go. A young wine industry man aspiring to be a winemaker... he thinks theatre and wine is a good combination.



Sean Boston

Sean has been involved in theatre both on stage and backstage since he was in high school. Sean is enjoying being back on stage in "A Great Face for Radio" after a small break while singing with his father and sister in their band "The Boston's". Sean would like to thank Wendy, the cast and the team for all their work in bringing this show together. Enjoy the show!

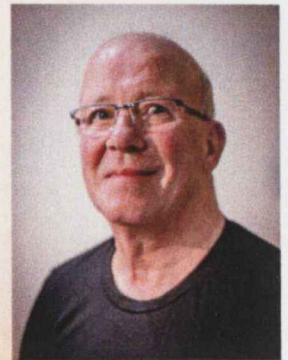


Victoria Logan

Victoria has once again returned to Napier Operatic having been in *Bad Girls* and most recently *Mrs Corry* in *Mary Poppins*. She has really enjoyed working with the fabulous artistic team and being around this talented cast.

David Moore

David's previous theatrical experiences have been as actor (*Mousetrap*, *Verdict*, *An Inspector Calls*, *Last of the Summer Wine*, *The 39 Steps*), director and playwright; this is his first venture into musical theatre. He has enjoyed being part of such a lively cast.



Hannah Oldershaw

Hannah is a year 12 student at Napier Girls' High School. This is Hannah's first on-stage role with Napier Operatic Society, having previously helped backstage with makeup on various shows. Hannah studies drama at school and is part of Hawke's Bay Youth Theatre where she recently played a lead role in the play "*Wheeler's Luck*". She also enjoys lyrical and jazz lessons. She has thoroughly enjoyed taking part in a show with her dad!

Danica Ondrušová

Danica has been involved with musicals on and off the stage for Napier Operatic since 2016. *A Great Face for Radio* is her first comedy and she enjoys every minute being part of it. She has also enjoyed being around so many talented, lovely, inspiring and funny people.



Farani Penitito

Farani made his stage debut at the age of sixteen playing the title role in *Aladdin*. Since then Farani has played lead roles in *Hairspray*, *Evita*, *Dreamgirls*, *The Wedding Singer* and ensemble in *Miss Saigon*. Farani loves the music in *A Great Face for Radio* and is sure you will too.



Sharon Devereux

Sharon is celebrating a 30 year anniversary of performing with the Napier Operatic Society - her first show being a fun filled music hall, so what better way than with another fun Christmas show. She hopes you find plenty to laugh and sing along with.

Sarah Ericksen

Sarah is a regular to the Tabard stage, having been involved more recently in Forbidden Broadway, Addams Family and behind the scenes with Mary Poppins. Sarah is delighted to be part of A Great Face for Radio. Having moved back to HB eight years ago, this is a little blast from her Wellington past. She would like to thank Wendy and Mark for their incredible dedication and a big hug to Amanda Stone.

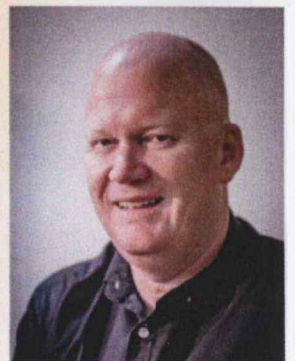


Stephen Evans

Stephen has recently moved to Hawke's Bay from the South Island. Raised in Stourbridge, England, he first hit the stage as a T-Bird in his high school production of Grease. Stephen is a singer-songwriter and has fronted a number of bands in both England and NZ. He is very excited to be joining this talented cast.

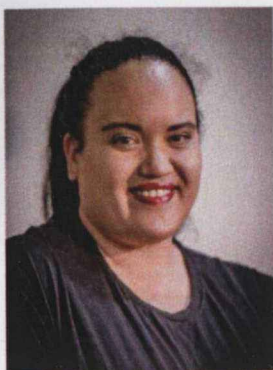
Martin Good

For local Breeze host Martin, it's a case of art imitating reality, the perfect show for a man with a 25 year career in radio. Although no stranger to performing to a crowd as an MC, Marriage Celebrant and bass player in a local band Badger, this is his first experience in a stage show.



Penny Good

Rekindling a childhood passion for theatre, this is Penny's first time on the stage since she was a teenager. Ticking off an item on her bucket list has been a challenging but very rewarding experience for her. Her favourite part of this journey, the people!



Penina Ria

This is Penina's second show with the Napier Operatic Society with previous performing in Dreamgirls in 2014. I would like to thank the directing team, my work colleagues, family, friends and lastly, my husband for the love and support.

Simeon Ria

Sim has sung a few songs and danced a few dances. He's been an active part of the Society since being in Dreamgirls in 2014 and is very happy to be performing next to his wife Penina once more, along with both new and familiar faces.



Lexina Wyatt

My enthusiasm for performing was stirred when accompanied by fellow parents at Bledisloe School, some like-minded adults, wrote, staged and performed pantomimes to give pre-school and primary age audiences a taste of live theatre. I joined the Napier Operatic Society as a back-stage helper when my daughter got involved in the theatre school shows. Most commonly found in the wardrobe (department) I came out of the closet last year to appear in Barnam the Circus musical. A Great Face for Radio is my second on stage appearance and I love the challenge of dancing, singing and learning Spanish (La Bamba) with such a fabulous, talented group of like-minded adults.

Band Conductor Mark Oldershaw

Keyboard 1: **Sally Rutgers** Keyboard 2: **Dave Atkin**
Bass Guitar: **Paul du Fresne** Drums: **Joe Atkin**



Total Food Equipment

Supporter of the
Napier Operatic Restaurant Theatre

27 Bower Street, Napier • Phone 06 834 4004 • www.tfe.co.nz

ACT 1

SONGS/RADIO PLAYS



- Locomotion Ensemble
- It's My party Medley Female Ensemble
- Hound Dog Sharon Devereux
- Miss Taihape Top Tips Victoria Logan
- Calendar Girl Farani Penitito and Ensemble

WHERE ANGLES FEAR TO TREAD

David Moore, Farani Penitito, Simeon Ria,
Danica Ondrušová and Penina Ria,
Dominic Bolton and Sean Boston

- Feeling Good Carlee Atkin
- It Never Rains in Southern California/
Georgie Girl Ensemble
- Sixties Medley Ensemble



STORY THEME Ensemble

Remember the days of the Old Schoolyard
Simeon Ria, Danica Ondrušová and Ensemble

A HOME WITH THE HAMILTONS

Beryl and Ida with Ensemble and Billy

- Smoke Gets in My Eyes Simeon Ria
- The Great Pretender Farani Penitito
- Great Balls of Fire Ensemble

ACT 2

- La Bamba Ensemble
- Autumn Leaves Ali Beal
- Miss Taihape Returns..... Victoria Logan
- Shout..... Stephen Evans
- Only Wanna To Be With You Ali Beal and Sarah Ericksen
- My Girl..... Farani Penitito, Sean Boston
and The Boys

RURAL ROUNDUP David Moore and Stephen Evans

- These Boots Are Made For Walking Carlee Atkins
- Something Stupid David Moore and Dominic Bolton
- The Lady is a Tramp Ensemble
- Mr Bojangles Martin Good and Brooke Behague

SOUTHLANDER'S THEME Sean Boston and Ensemble

- The Ballard of Barry & Freda Full Cast
- On stage sound effects Sean Boston



PRODUCTION TEAM HEADS OF DEPARTMENT

Production Manager:	Davina Roper
Production Secretary:	Mary Crook
Stage Director:	Kendall Browne
Stage Manager:	Gail Jones
Stage Construction:	Kendall Browne
Lighting Design:	Tony Unsworth
Sound Design:	Terry Molloy White Audio
Properties Manager:	Irene McKinnon
Wardrobe Manager:	Yvonne Arrowsmith
Makeup Manager:	Julie Marr
Hairstylist:	Davina Roper
Set Design:	Marc Collier & Kendall Browne
Cast and Crew Suppers:	Social Club



PRODUCTION TEAM

Stage and Construction:	Alan Jones, Patteson Aifai, Eoin McKinnon Graeme Revell, Simon McCosker, Davina Roper, Steve Roberts, Jarrod Macredie, Mike Connolly, Peter Thomassen-Clarke
Lighting Operator:	Benjamin Smyth
Following Spot:	Mike McConnell
Sound Operator:	Ethan Burns
Sound team:	Sonya Aifai and James Wright
Properties Team:	Rachael McKinnon, Christine Kenah and Michelle Winter
Wardrobe and Dressers:	Pam Christensen, Bev Carroll, Cath Neems, Deidre Hitchcock, Kerry Unsworth, Helene Hurbert and Pamela Windle
Makeup Team:	Rachel McKinnon, Jude Allan, Roxanne Batkins
Cast and Crew Supper:	Social Club
Publicity Team:	Sarah Ericksen, Sonya Aifai, Anita Davies, Jill-Marie Johnston and Irene McKinnon
Programme:	Jill-Marie Johnston
Photographer:	Paul Taylor and Jill-Marie Johnston

HOSPITALITY

Front of House:	Tessa-May Brown
Restaurant Manager:	Kay Colins
Bar Manager:	Ian Collins
Catering Manager:	William Waitoa

All departments assisted by Friends of the Society

OFFICERS OF THE SOCIETY

Executive List:

Patron: Peter Cox OBE
President: Tessa-May Brown
Vice President: Ali Oldershaw
Immediate Past President: Marc Collier

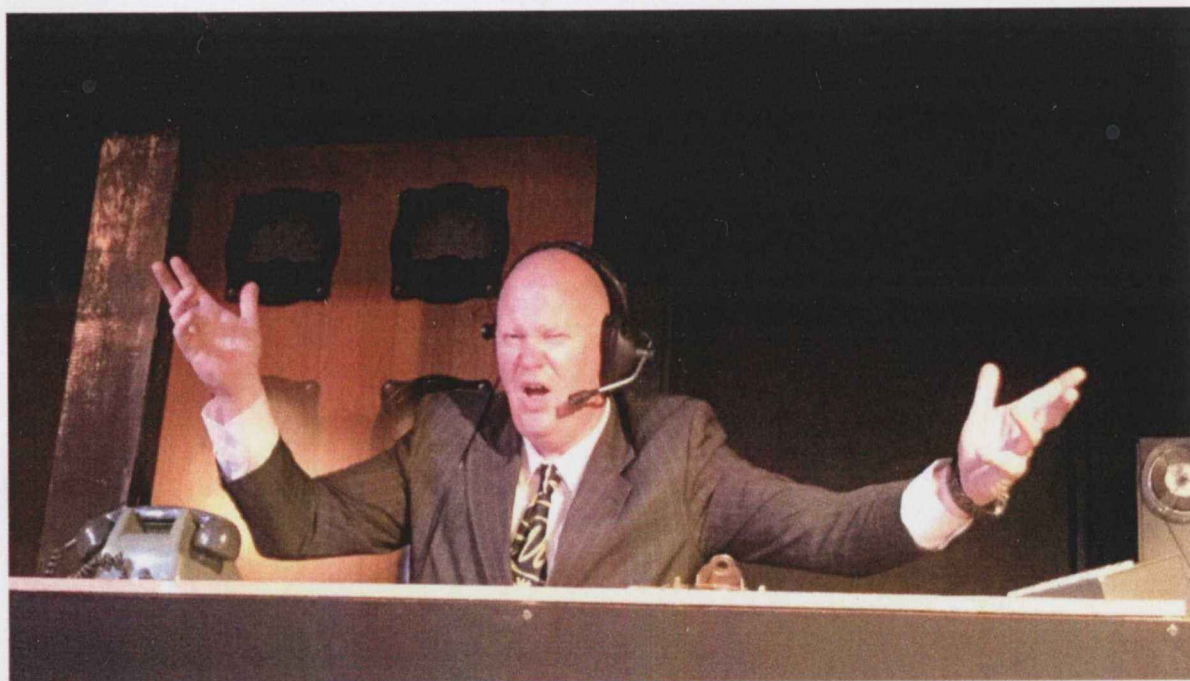
Chairman: Glen Pickering
Secretary: Sonya Aifai
Treasurer: Lesley Carthew

Committee: Donna Briggs
Jayne Clinton
Sarah Ericksen
Anne Penitito
Davina Roper
Brent Smith
Kerry Unsworth
James Wright



Life Members:

Dawn Unsworth, Alan Jones, Donald Hurley, Fred Twyford, Barrie Browne, Lyndsay Browne, Brian Nathan, Ian Reid, Peter Shepherd, John Briggs, Gillian Davies QSM, Lois Reefman, Peter Eade, John Matthews, James Morgan, Lesley Carthew, Leigh Jones and Anita Davies.



MUSIC FOR "A GREAT FACE FOR RADIO"

MUSICAL WORK

COMPOSER/S

LOCOMOTION	King C/Goffin G
WHY DO FOOLS FALL IN LOVE	Lymon F/Levy M
HOUND DOG	Leiber J/Stoller M
PLEASE MR POSTMAN	Holland B/Bateman R/Isley R
IT'S MY PARTY	Gluck J/Stoller M
CALENDAR GIRL	Greenfield H/Sedaka N
FEELING GOOD	Newley A/Bricusse L
IT NEVER RAINS IN	
SOUTHERN CALIFORNIA	Hammond A/Hazlewood M
GEORGY GIRL	Springfield T/Dale J
CALIFORNIA DREAMIN'	Phillips J/Phillips M
GO WHERE YOU WANNA GO	Phillips John Edmund Andrew
REMEMBER THE DAYS OF THE	
OLD SCHOOL YARD	Islam Yusuf/Stevens Cat
SMOKE GETS IN YOUR EYES	Otto Harback
GREAT PRETENDER	Ram Buck
GREAT BALLS OF FIRE	Blackwell O/Hammer J
LA BAMBA	Adapted by Ritchie Valins
AUTUMN LEAVES	Kosma J/Prevert J/Mercer J/Parsons G
SHOUT	Isley O/Isley R/Isley R
I ONLY WANT TO BE WITH YOU	Raymonde I/Hawker M
MY GIRL	Robinson S/White R
THESE BOOTS ARE MADE FOR WALKING	Hazelwood Lee
SOMETHING STUPID	Parks C Carson
LADY IS A TRAMP	Rodgers R/Hart L
MR BOJANGLES	Walker Jerry Jeff
THE BALLAD OF BARRY AND FREDA	Wood Victoria

ACKNOWLEDGEMENTS

To all of those who have participated and contributed in ways large and small, the Society and company of A Face for Radio wish to extend their gratitude.



NAPIER
CITY COUNCIL
Te Kaunihera o Ahuriri



SARAH ERICKSEN
Your home, your future, your choice.

Treanins Real Estate Limited (NZ) Ltd Licensed Real Estate Agent REAA 1908



Call me today on 027 555 6785 to have a conversation about your property.

TREANINS

tfe

Total Food Equipment

Supporter of the
Napier Operatic Restaurant Theatre

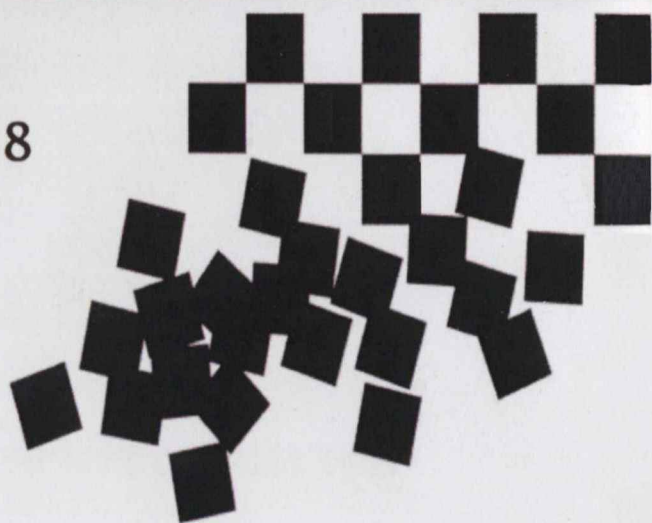
27 Bower Street, Napier • Phone 06 834 4004 • www.tfe.co.nz



liver!

6th - 28th April 2018

20th - 11th August 2018



♠ CHESS

THE MUSICAL