

HASTINGS THEATRES

STATE THEATRE. TO-DAY AT 2.15 TO-NIGHT AT 8 P.M. CORINNE LUCHAIRE. "PRISON WITHOUT BARS"

Finally To-night! JACKIE COOPER in "GANGSTER'S BOY"

COSY THEATRE. AN OUTSTANDING WEEK-END PROGRAMME. HOPALONG CASSIDY RIDES AGAIN. "IN OLD MEXICO"

Regent. TO-MORROW AT SESSIONS 2.15 & 8 p.m. CLARK GABLE MYRNA LOY. "TOO HOT TO HANDLE"

MUNICIPAL PICTURES. TO-NIGHT AT 8 P.M. "TALENT SCOUT" WITH DONALD WOODS JEANNE MADDEN ROSALIND MARQUIS

MUNICIPAL THEATRE HASTINGS. WEDNESDAY & THURSDAY MAY 3 and 4. STANLEY MCKAY'S NEW GAJETIES

AMUSEMENTS

Plans Now Open THE MARVELOUS VIENNA MOZART BOYS' CHOIR. MUNICIPAL THEATRE HASTINGS

State. "PRISON WITHOUT BARS" Stirring Dramatic Story

A film of unusual type—a beautiful but tense drama, based on the life of condemned women in French women's reformatory—"Prison Without Bars" heads the attraction which comes to the State Theatre, Hastings, to-day.

Cosy. FEUDS AND REVENGE IN THE WEST. "In Old Mexico" With "Illegal Traffic"

Brilliantly acted by the entire cast, "Prison Without Bars," is one of the most moving dramas of the year, with special honours going to the star, Corinne Luchaire and Edna Best.

Municipal. YOUNG SINGER'S RISE TO STARDOM. "Talent Scout" With "No Parking"

There is an admirable supporting cast. "No Parking," starring Gordon Harker, in the second attraction, tells the story of Bert, a car park tout, who finds a letter which introduces a James Selby to a gang of diamond thieves.

NAPIER THEATRES

The Plaza. FINALLY TONIGHT. WILLIAM POWELL ANNABELLA. "THE BARONESS AND THE BUTLER"

TO-DAY, 2.15 MAYFAIR THEATRE To-night, 8.0. CAUGHT IN A MAD MAELSTROM OF SHRIEKING SCANDAL AND SUDDEN DEATH! THE LADY OBJECTS

Box Plan at J. R. Ross—678. Theatre Phone 1998. STATE THEATRE. NAPIER'S LEADING CINEMA.

Jane Withers ALWAYS IN TROUBLE. JEAN ROGERS ARTHUR TREACHER ROBERT KELLARD EDDIE COLLINS ANDREW TOMBS NANA BRYANT JOAN WOODBURY

EXTRA. The Latest Issue "THE MARCH OF TIME" 20th Century-Fox Australian and International News

Regent. STANLEY MCKAY'S GAJETIES. All Star Cast In Widely Varied Entertainment

Thrills And Romance In "Too Hot To Handle" CLARK GABLE AND MYRNA LOY

Clark Gable and Myrna Loy as daredevils under fire provide thrills, romance, and action-packed drama in "Too Hot To Handle," the story of the daring feats of newsreel cameramen, which opens at the Regent Theatre, Hastings, to-morrow.

Plaza

RETURN OF CLIVE BROOK. Forgery And Murder In "The Ware Case"

Clive Brook makes a welcome appearance in the A.T.P. production, "The Ware Case," which comes to the Plaza Theatre on Saturday, and it is doubtful if he has ever been seen to better advantage.

The splendid manner Lady Ware stands by her husband when he needs her most. She knows that she has been unfaithful, just as she knows that Michael is hopelessly in love with her, but her answer to the latter when he stresses her husband's unworthiness is: "Yes, I know all that, my dear, but I made my choice and while Hubert needs me, I cannot leave him."

Current Attraction. To-night marks the final screening of "The Baroness and the Butler," the brilliant comedy featuring William Powell and Annabella.

Mayfair

TWO VIVID DRAMAS SHOWING. "The Lady Objects" With "Savage Gold"

A smashing dramatic tale of marriage destroyed by a career-seeking wife, Columbia's "The Lady Objects," now showing at the Mayfair Theatre, races to its thrill-filled climax in a court of law, where the modern Portia defends her husband against the charge of murdering "the other woman."

"The Lady Objects," directed by Eric C. Kenton, maker of many Columbia hits, has seven song numbers interwoven in the romance and drama. Two of them are sung by the popular Joan Marsh.

State. BRILLIANT FARCE AND COMEDY. Jane Withers In "Always In Trouble"

Mischievous Jane Withers is in a jam again! 20th Century Fox's "Always in Trouble," commencing at the State Theatre to-day stars her in an ideal role as a poor little rich girl whose family has gone high hat on her.

Her first step is to make the family stop nagging poor Dad. She arranges for him to be left home from their yachting trip and makes young Robert Kellard, one of the magnate's employees, take over the helm of the craft.

USED CARS

FREE REGISTRATION FOR 12 MONTHS! CHRYSLER PLYMOUTH SEDAN. PLYMOUTH SEDAN. FORD 4-Door Sedan

THE TOURIST MOTOR CO., LTD.

OUR USED CARS ARE GOOD!! PLYMOUTH 6 De Luxe Model. FORD 4-Door Sedan. SINGER 12 Saloon. OLDSMOBILE SEDAN, 1935. THOMPSON MOTORS LTD.

AUTHORISED DEALERS

Due to the popular demand for new 1939 V8's, we have surplus stocks of quality used cars, which are offered to the public at better than competition prices.

USED CAR BARGAINS

1937 MORRIS 8 Four-Door Saloon £195. 1930 CHEVROLET Sedan wire wheels £145. SINGER Sports Tourer £65. ESSEX 4-Cyl. Tourer £20.

FRED LOWE MOTORS LIMITED.

7 DAYS' FREE TRIAL WITH ALL USED CARS! Three Months' Guarantee on Cars over £100.

M. J. KELT & CO.

All Kinds of Firing at E. WARE & SONS. "The Coal and Firewood People," RIVERSLEA RD., HASTINGS.

WOOD & COAL MERCHANTS

M. J. KELT & CO.

GLencoAL WHITE & CO.

ROBERT HOLT & SONS LIMITED

Reform and shell artificial eyes in stock. All sizes and colours. H. M. Bennett, Ltd., Opticians, Hastings Street, Napier.

Why Make Your Home a

PRISON WITHOUT BARS

Here Is Freedom and Escape From Drudgery

FREE



YOU TOO

Can Be Free From Drudgery

... if you will let us do ALL your washing and ironing for you. — No matter what you need washed or ironed we can do it by reliable modern methods.

Guaranteed Work and Speedy Delivery is Our Motto.

HASTINGS STEAM LAUNDRY

Ring 4361 and Our Van Will Call



SUZANNE—

BLONDE AND BEAUTIFUL — WRONGLY CONVICTED AND SENT TO A BRUTAL REFORMATORY PRISON — KEPT AMONGST FALLEN AND FORGOTTEN WOMEN — WITHOUT FREEDOM AND WITHOUT LOVE . . .

HOUNDED AND DENIED ALL HAPPINESS UNDER THE SUPERVISION OF EMBITTERED AND CRUEL WOMEN SUPERVISORS, WHO BELIEVED IN PUNISHMENT AS THE MEANS TO CORRECTION.

The amazing story behind "PRISON WITHOUT BARS" will shock you, but Suzanne makes her escape. Her story is one of the most poignant and powerful dramas ever shown on the screen, and has created a sensation in screen history!

Introducing the 17-year-old "CORINNE LUCHAIRE"

PRESS REVIEWS

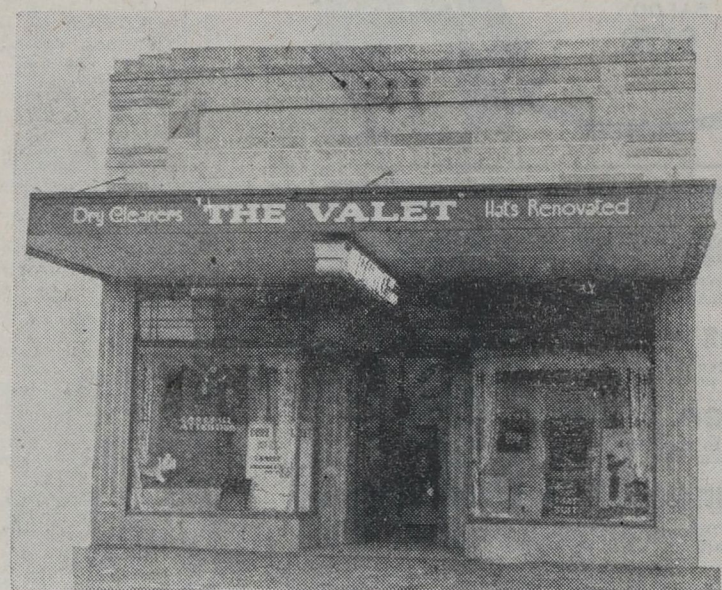
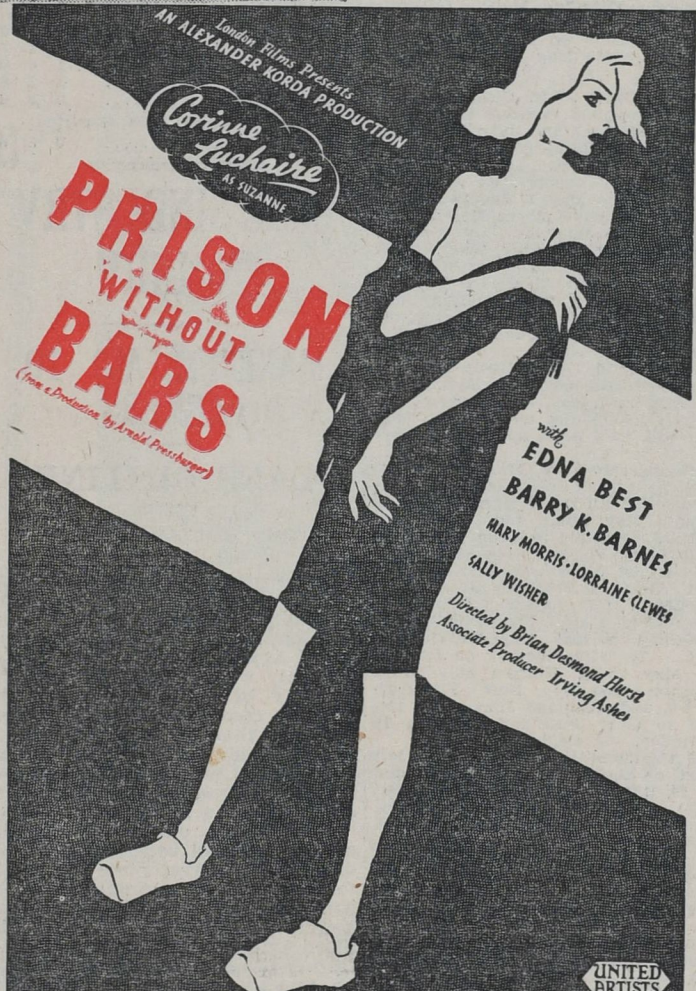
"The story is gripping dramatic fare, well off the beaten track. Settings are realistic, and acting is first-class. Corinne Luchaire, making impressive debut in stellar lead."—Daily Film Review.
"Striking and unusual entertainment designed to suit all tastes. We imagine few patrons will be able to view it and remain dry-eyed. 'Prison Without Bars' is rare entertainment!"—The Cinema.
"We must thank Alexander Korda for giving us one of the finest dramas ever made in a British studio. It should touch the hearts and minds of the million. The story is packed with interest; it is moving and exciting; and it is directed with fine feeling and power by Brian Desmond Hurst. Edna Best gives the performance of her career. General appeal—Excellent."—The Era.
"Admirably acted and produced."—Daily Herald.

"Corinne Luchaire is a lovely and worthwhile discovery. Marietta Hunt gives a magnificent performance."—Jewish Chronicle.
"Strong emotional portraits and fine young film material."—Daily Express.
"Prison Without Bars" is a rattling good picture.—Daily Sketch.
"Mary Morris is going to be one of the big things of the year."—Daily Mirror.
"Corinne Luchaire is very attractive."—Evening News.

— Commencing at the —

STATE

Hastings Leading Theatre
TO-DAY
At 2.15 & 8 p.m.
PLANS AT THEATRE
TELEPHONE 2674
(Recommended by the Censor for Adults)



PHONE 3747
For Courtesy — and — Attention

PHONE 3747
SAME DAY SERVICE

"NU-WAY"

Is the Modern Dry Cleaning Way

Odourless — Harmless — Guaranteed

WE DRY CLEAN

BLANKETS	DELICATE FABRICS
TRAVELLING RUGS	EVENING WEAR
OVERCOATS	SPORTS WEAR
WE CLEAN	FOR LADY OR GENT WE CLEAN
	FOR ANY OCCASION
	HATS CLEANED AND REBLOCKED

CONSULT US!

The Hastings Valet Service

King St., Hastings E. J. Jeffries (Proprietor) Opp. Roach's Ltd.

"Support a Hastings Industry"

We Collect Free!

We Deliver Free!

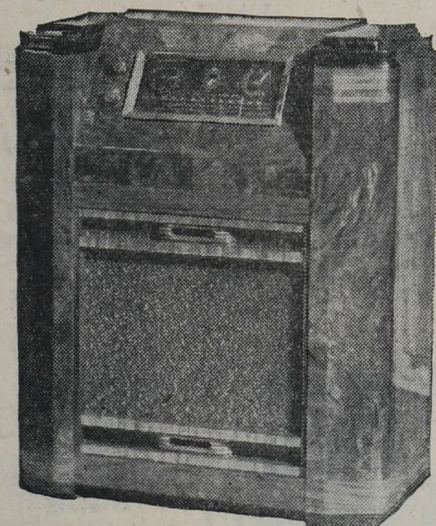
HARMONY IN YOUR HOME

With the Latest 1939

ULTIMATE

RADIO

ULTIMATE



ULTIMATE

DEMONSTRATIONS ARRANGED
OUR SERVICE

Includes Repairs to all classes of Domestic Electrical and Radio Equipment

Consult Us

HECTOR JONES ELECTRICAL COMPANY, LIMITED

(Automotive Electrical Battery and Radio Specialists)

KING ST. HASTINGS PHONE 4359

SINGER The New Nine Bantam De Luxe Saloon

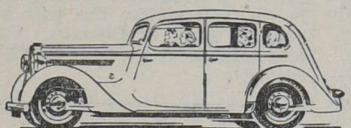
A PROBLEM SOLVED

The rigours of winter need not chain you to the house if you own a Singer Car.

SINGER



SINGER



SINGER

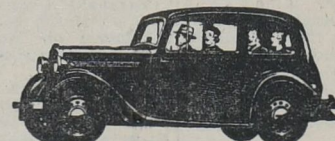


SINGER

- British
- Safe
- Modern
- Economical
- Value

Now on View—

THE LATEST 1939
SINGER
NINE BANTAM



This 9 h.p. car has earned a fine reputation for reliability amongst thousands of motorists. It is an outstanding car at such a low price.

The New Nine Bantam Saloon

See this New Singer In our showrooms

- Powerful
- Smooth
- Roomy
- Comfortable
- Accessible

SINGER



SINGER



SINGER



SINGER

Ross, Dysart & McLean Ltd.

KARAMU RD., HASTINGS

PHONE 4114

DANNEVIRKE

Phone 2666

Anderson & Hansen - LIMITED -

Advertisement for Ford and Triumph cars. Models include Ford New Beauty Tourer (£30), Ford 'A' Four-Door Sedan (£110), and Triumph Saloon (£85). Price for 1936 Austin Seven Saloon is £170. Contact: Hastings 2634.

Shipping at the Port Yesterday On Change

Transaction List. Following is a list of transactions of the New Zealand Stock Exchange yesterday: WELLINGTON EXCHANGE, CHRISTCHURCH EXCHANGE, LIME INDUSTRY INQUIRY. Includes details on various stocks, bonds, and agricultural products.

Rabble Sets New Track Time In Timaru Cup

Dictate Second, With Settlement In Third Place. Sir Hugh Wins Nightcalm Dead-Heats With Petersham In The Sprint. Rabble set a new track time of 2:23.55 in the Timaru Cup.

THE SINGER BANTAM. Will Give You Big Mileage at Small Expense. 40 MILES FOR 2/2. ENGLAND'S FINEST LIGHT CAR. Price: £279. Ross, Dysart & McLean Ltd., Hastings.

IMPORT RESTRICTIONS. HAVE NOT AFFECTED OUR COMPREHENSIVE RANGE THIS YEAR OF Golf Clubs - Balls - Bags - Shoes. Geo. Nicoll Clubs. Full Range of Spalding Clubs. Badminton Racquets. HAWKE'S BAY FARMERS' ASSOCIATION LTD.

WANTED TO PURCHASE

NEW SEASON'S WALNUTS IN ANY QUANTITY. TOP PRICES PAID FOR GOOD QUALITY LINES. Send Samples early to: WILLIAMS & KETTLE LTD., MARKET ST., HASTINGS.

WILLIAMS & CREAGH, LTD. NAPIER AND HASTINGS. GENERAL CARRIERS, ETC. PROMPT, RELIABLE SERVICES. Our Trucks are going and coming continuously between Napier and Hastings, carrying goods etc.

AWATOTO CONCRETE TROUGHS ARE MIGHTY TOUGH!

AWATOTO SHINGLE CO., LTD. NAPIER - Phone 166. Phone 3955 - HASTINGS. NOT OF WORKS! IT SIMPLY THUNDERS OUT OF GOD'S WORD THAT SALVATION IS NOT OF WORKS, yet hundreds and thousands of people are still seeking peace with God through their own labours.

MELLOR & SON QUALITY BUTCHERS. BEEF, VEAL, HOGGET, LAMB, PORK AND POULTRY. Phone 29. DENTON WYATT'S PLAYING CARDS. LEXICON CARD GAME. AMERICANA CARD GAME.

DENTS Phone 2905. MODERN MOTOR BODY REPAIRS. Karamu Rd., Hastings. For Building Alterations and Repairs Consult: MUSSON & MADDOX. 500 E. St. Anby St., Hastings.

Autumn Sowing!

Offer some choice lines of CAPE BARLEY, ALGERIAN SEED OATS. Also complete range of GRASS AND CLOVER SEED. Samples and quotations on application—70, better still, call and inspect. J.C. JORDAN, MARKET STREET, HASTINGS.

FOR MOTHERS AND OTHERS

Train Trips During School Holidays. What a joy for families! Easy, care-free low-cost trips by rail! They just book their seats and leave themselves gladly in the care of the Railways Department.

FREE CABLEGRAMS ON MONDAY 1st MAY

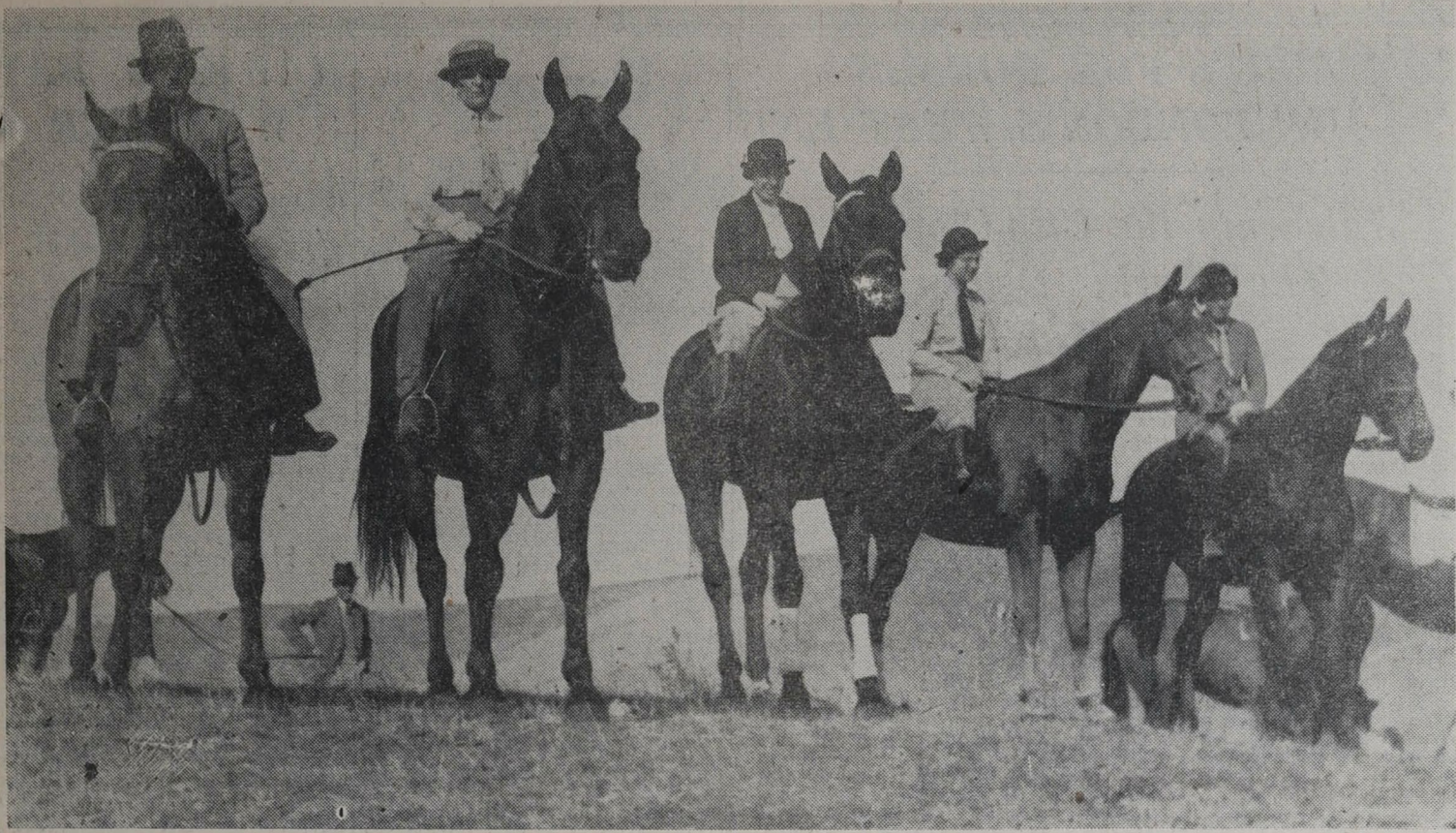
A NEW EMPIRE CABLE SERVICE will commence on 1st MAY for messages of a social nature. It will be available to England, Scotland, Wales, Northern Ireland, South Africa and certain other Empire countries. The Rate will be 5d a word with a minimum charge of 5/-.

SPORTSMEN!! THE SEASON OPENS SHORTLY! ARE YOU READY? HASTINGS. Mr. Arthur Pascoe, M.B.N.A.M.H., the Celebrated Health Specialist, is paying a short visit to Hawke's Bay.

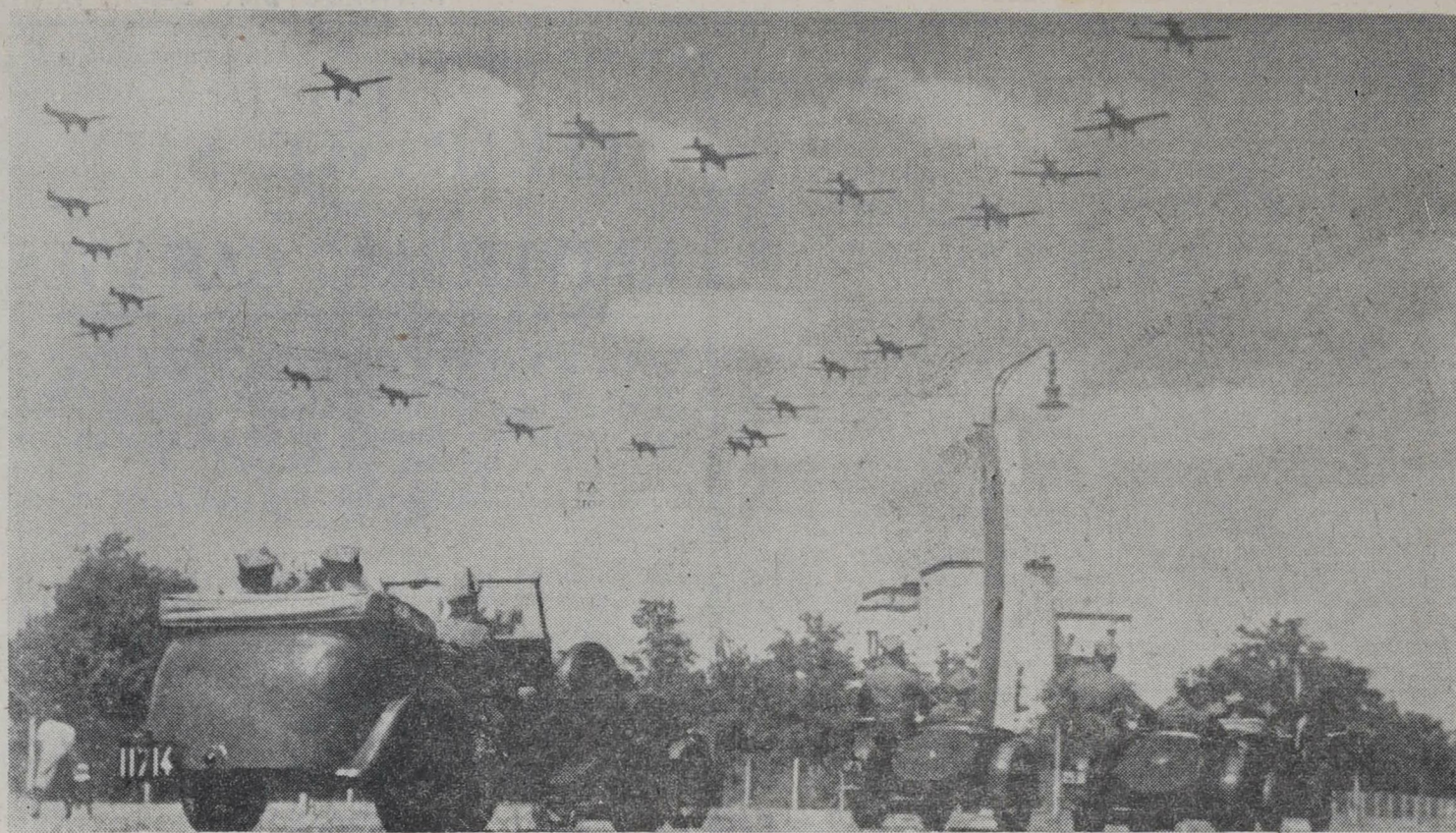
Special Concessions For Families. ONE FREE SOCIAL MESSAGE OF 12 WORDS, INCLUDING ADDRESS, MAY BE SENT ON MONDAY, 1ST MAY. ADDITIONAL WORDS 5d EACH.

THE NEW ZEALAND FARMERS' UNION. A comprehensive order of reference has been drawn up as follows: (1) To investigate the more efficient production of lime and the organisation of the lime industry generally.

HASTINGS. Mr. Arthur Pascoe, M.B.N.A.M.H., the Celebrated Health Specialist, is paying a short visit to Hawke's Bay. A visit to him may save you years of suffering.



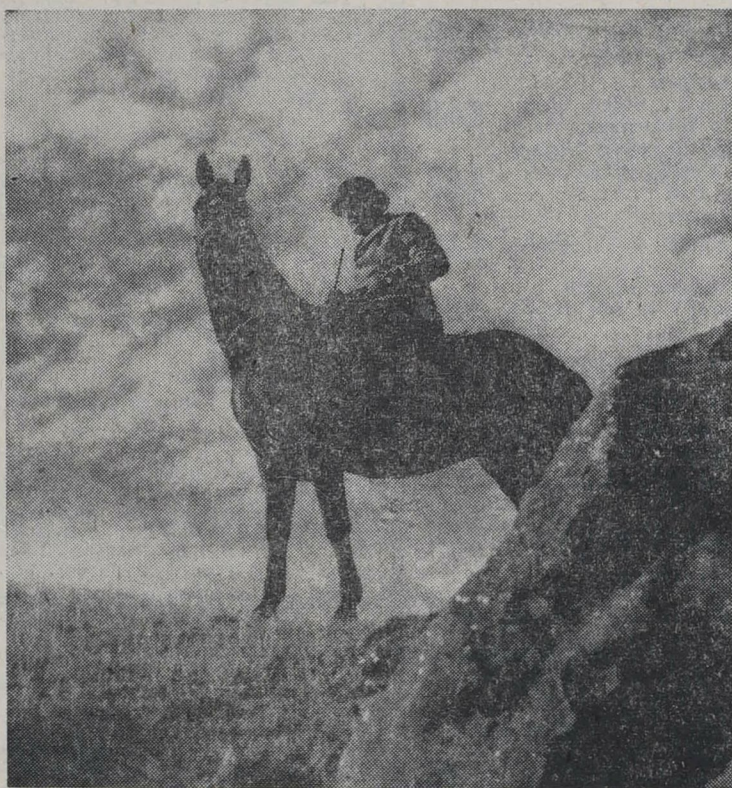
PAUSE FOR A BREATHER.—Members of the Hawke's Bay Hunt on the property of Mr D. Lane, Havelock North. Left to right, Mr and Mrs E. Nelson, Miss Grace Twist, Miss Margaret Bell, and Mrs A. P. White.



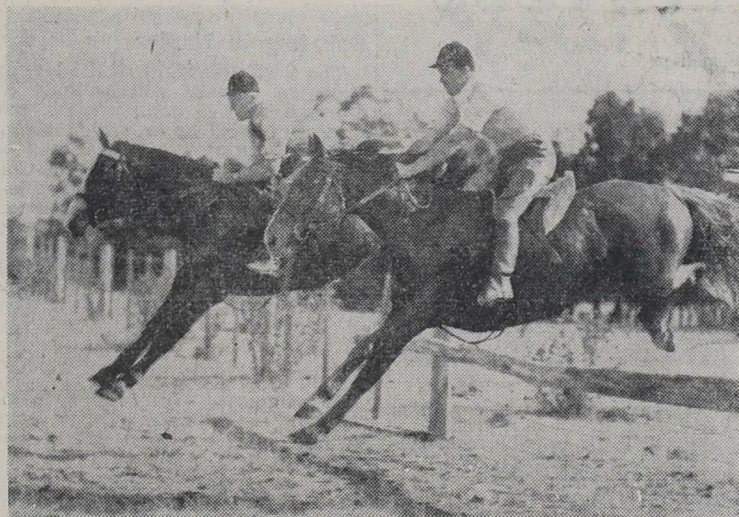
POLAND ALERT.—Staff officers watch a group of Polish 'planes patrolling the German-Polish border. Poland has recently redoubled her precautions, following German moves in the Czech State and Memel.



UP AND OVER.—Mrs A. P. White, wife of the Master of the Hawke's Bay Hunt Club, clears a bar during the qualifying meeting at Havelock North.



HUNT STUDY.—Mr H. Hassell and his horse "Stella."



PERFECT STYLE.—Mr M. Cooper on "Moonshine" (left) and Mr E. Symes on "Royal Toast," take a fence together during the Hawke's Bay Hunt Club's qualifying meeting on Wednesday afternoon.



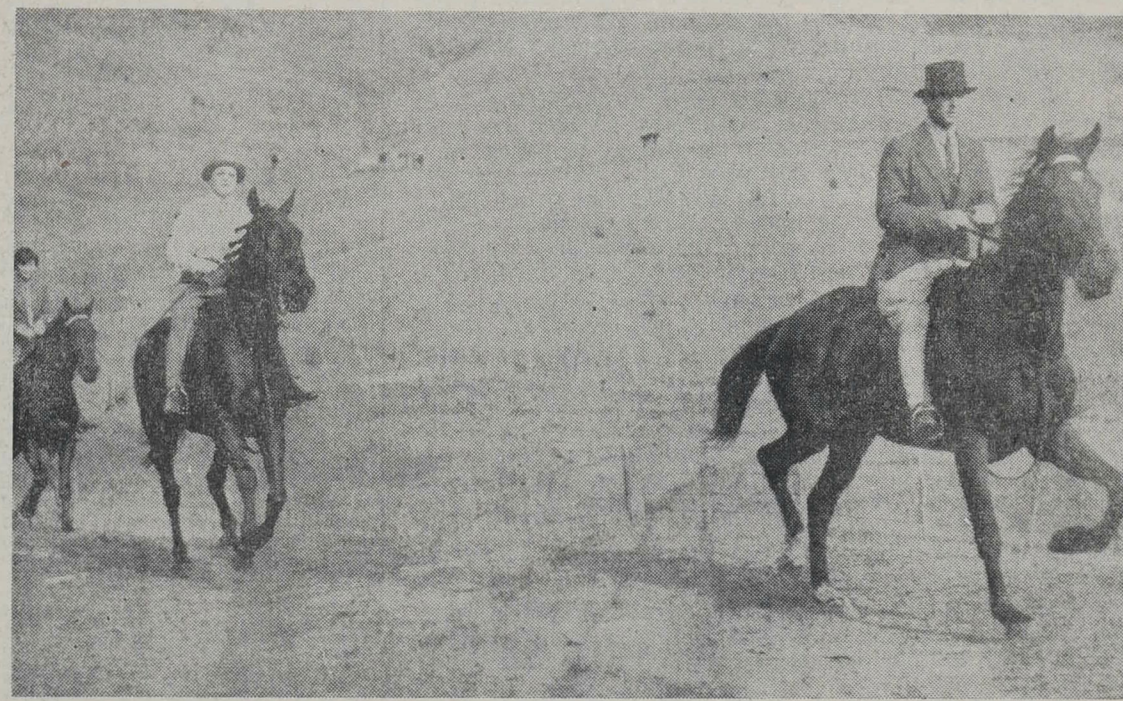
AUTUMN LEAVES.—Plane trees shed their leafy garments as autumn passes by. The drive at To-moana Showgrounds, Hastings.



THE HAWKE'S BAY HUNT.—Members of the Club on the move at Mr D. Lane's property, Havelock North, on Wednesday afternoon.



POLISH TROOPS ON THE MOVE.—Motorised forces moving up to the Prussian border early this month. Poland has an exceedingly well-trained army equipped in the most up-to-date fashion.



THE MASTER.—Mr A. P. White, Master of the Hunt, is seen leading Mrs E. Nelson and Mrs A. P. White during the Hawke's Bay Hunt Club's meeting on Wednesday.

MOTHER COOED "MY FROCK'S A PICTURE" FATHER SAID: "AT WHAT A PRICE!?"

"MEETING MRS. HYPHEN-MORLEY I JUST SIMPLY MUST LOOK NICE."

"OH MY STARS! THIS WRETCHED PUNCTURE. OH MY HANDS! OH GOODNESS ME!"

BUT SHE WASHED HER HANDS WITH SOLVOL AND OUTSHONE THE COMPANY!

SOLVOL CLEANS HANDS IN 30 SECONDS!

CAR-DRIVERS—ALWAYS CARRY SOLVOL! SOLVOL CLEANS CAR-GRIMY HANDS AS NOTHING ELSE CAN. KEEP SOLVOL IN THE HOUSE, TOO. ITS PENETRATING LATHER CLEANS HANDS OF GREASE AND IMBEDDED DUST... STOVE BLACK AND METAL POLISH... ALL HOUSEWORK STAINS. FOR SOFT, WHITE HANDS USE SOLVOL.

A LEVER PRODUCT, MADE IN NEW ZEALAND. 25,266-19NZ

BEAUTY and EXTRA COMFORT for your home!



★ At Westerman's — the Big Store for Big Value, you'll find hosts of sound suggestions for making your home more cosy, more comfortable and more attractive with an absolute minimum of expense. Remember, at Westerman's you get better quality, bigger selections and you pay lower prices. Scan these values.

DOWN QUILTS, SPECIAL. 40 Single Bed Quilts. Neat pattern. Rayon Brocade covering with ruffled medallion design. Pretty shades of Rose, Blue, Green and Gold. Special Price . . . 29/6 each Single Bed size. Prices 37/6, 45/-. 69/6 to 95/- ea.

DOUBLE BED DOWN QUILTS, SPECIAL. 25 Down quilts in Rayon Brocade. Beautiful shades. Ruffled design. Light, warm and hygienic. Special Price . . . 37/6 ea.

"SINCREST" BLANKETS. Fine N.Z. Wool. Soft and warm to touch. Wonderful wearing qualities. Prices: Single Bed Size 27/6 pr. Double Bed Size 37/6 pr.

"ROSLYN" BLANKETS. A super quality in extra full sizes. Prices—Single/B. Size 45/- pr. Double Bed Size 65/- pr. Extra Large Double Bed 69/6 pr.

See also our ranges of Petone, Kaiapoi and beautiful "Kenwood" Blankets.

"COSY" BLANKETS. A cosy warm quality manufactured from fine grade wool, providing warmth without weight. Soft two-tone borders. Prices—Single/B Size 29/6 pr. Large 2-Bed Size 39/6 pr. Double Bed Size 45/- pr.

MATRESSES. A wide range of quality mattresses at economy prices. Beds of in-built comfort. Only the finest quality materials are used in our Mattresses. Fine stitched. Stoutly tufted and scientifically built of finest kapok. Single Bed Size 25/6, 37/6, 59/6, 67/6 to 85/- Double Bed Size 45/-, 59/6, 69/6, 75/- to 126/10/-

SEE THE "EXTRA SUPER PEERLESS" POCKET SPRING MATTRESS (Internal Spring Construction) Single Bed 44s Springs; Double Bed 73s Springs.

AND THE "MULTICOIL" MATTRESS. Patent Locked Internal Springs in New Damask Tickings.

Westerman's MODERN STORE

HASTINGS.

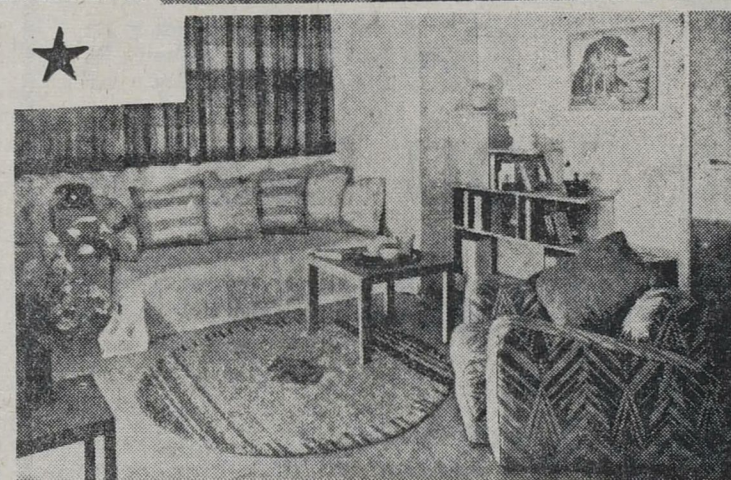
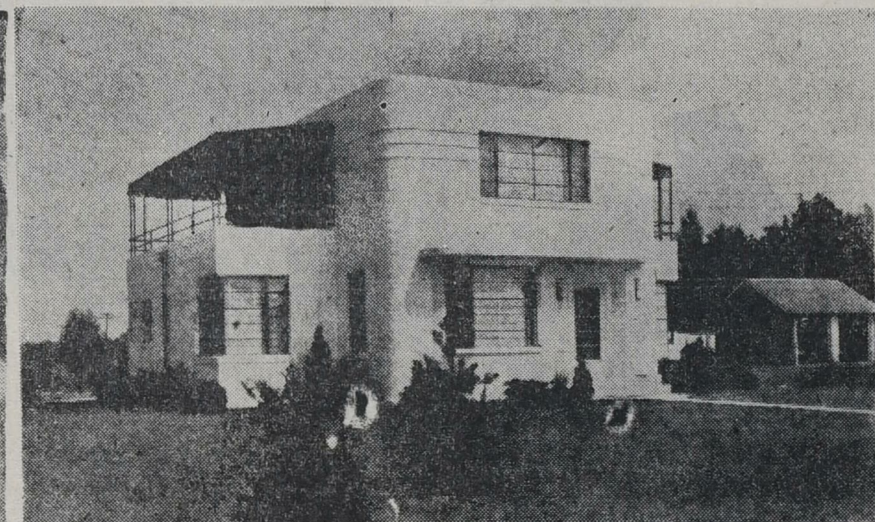
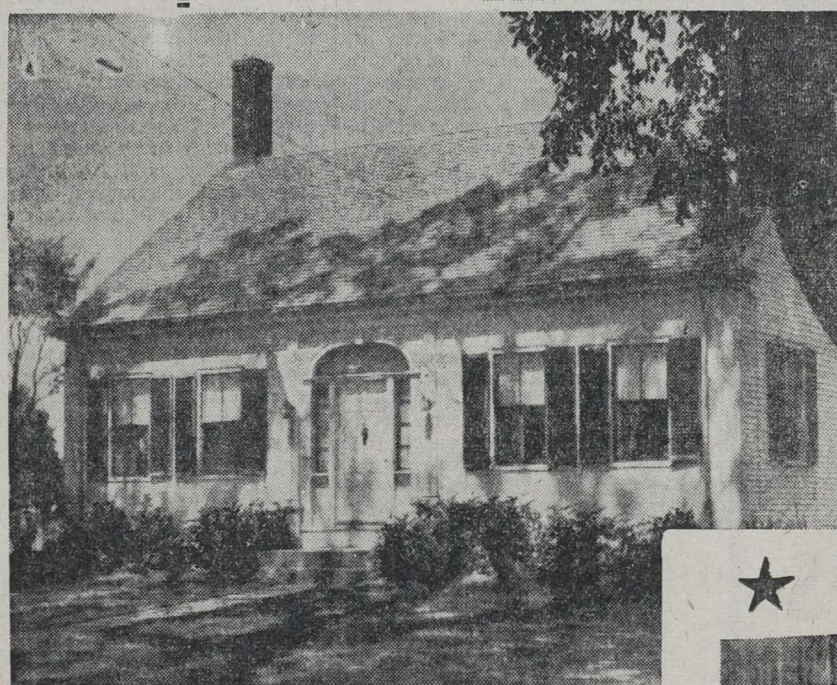
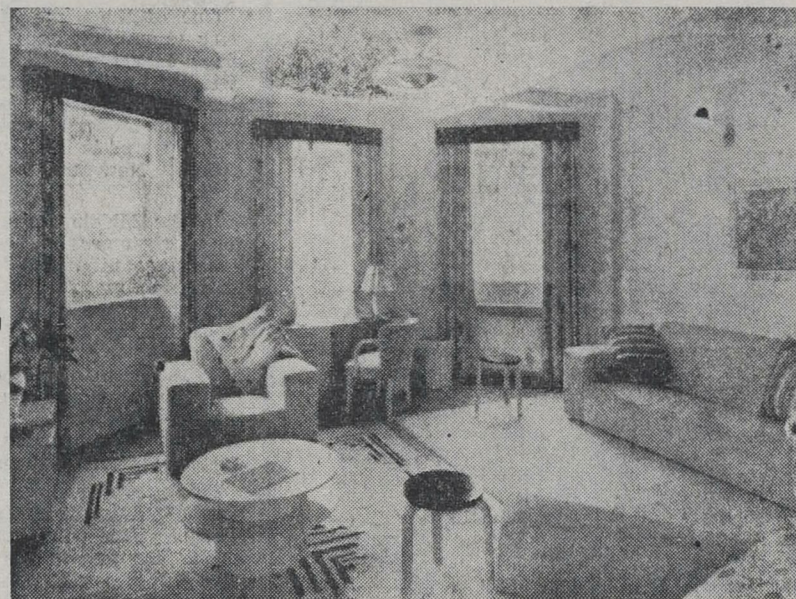
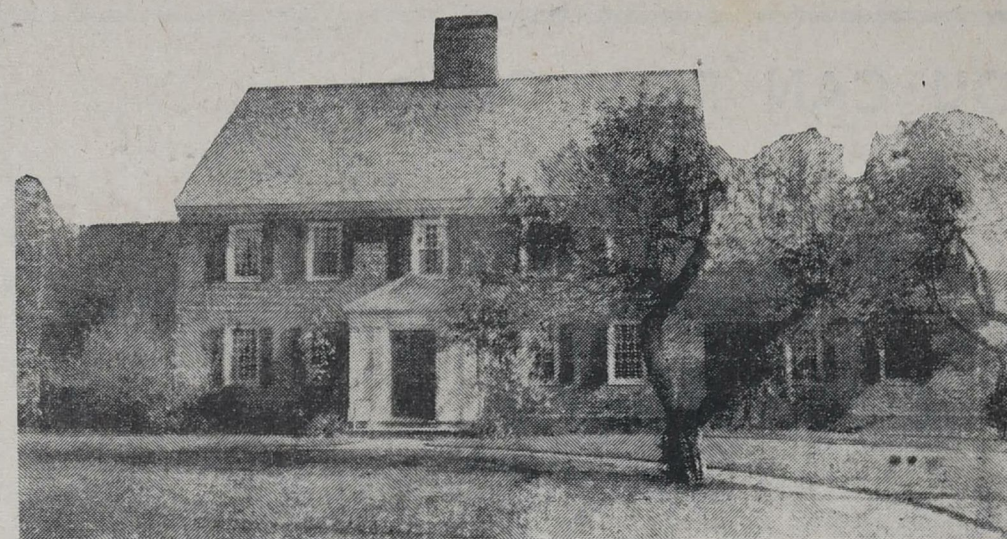
BETTER HOMES

BEAUTY AND COMFORT IN THE MODERN STYLE

THE CHANGING OF THE SEASONS IS REFLECTED IN CHANGING MODES IN HOME DECORATION AND COMFORT

The Little Intimate Touches Of Family Life—Particularly In The Long Winter Evenings—Add Zest To Living

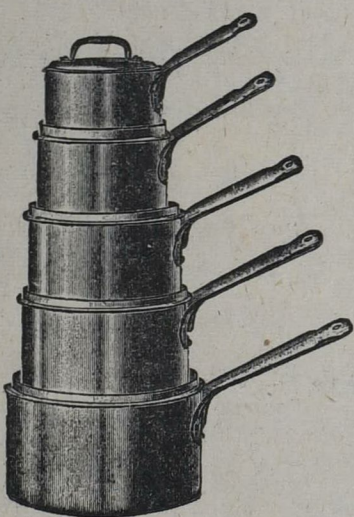
Perfect Comfort And Happiness Can Be Assured By Keeping The Home Abreast Of The Times



For the Last Time!

WE OFFER THIS FAMOUS "KOCKUMS" "SWEDISH ENAMELWARE" Owing to the Import Restrictions we are unable to import further stocks of this Fine Enamelware SO THIS IS DEFINITELY OUR LAST SHIPMENT.

CLAUSEN'S
QUALITY UNDER PRICED



WHEN SHOWN THE DIFFERENCE

80 PEOPLE
out of every
100 .

Select
KOCKUMS
SWEDISH
ENAMEL
SAUCEPANS

AND THE REASON IS NOT FAR TO SEEK
Hospitals, Governments and Institutions select
Swedish Enamel!

SET OF 5
Comprising one
each—
1 1/2pt., 1 1/4pt., 3/4pt.,
5/8pt. and 7/8pt.
35/-
Set

- Each Saucepan is given three special coatings of enamel.
- As the Steel Base of each Saucepan is several times tougher and thicker than ordinary cooking ware it lasts longer.
- It resists high temperatures.
- The perfect even and lustrous surface makes it so easy to clean.
- World renowned for its Purity, Durability and Sanitary Requirements

TELL YOUR HUSBAND ABOUT THESE—

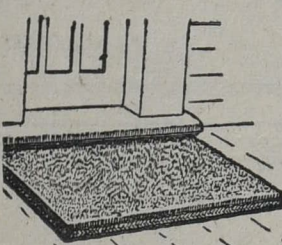
"GOOD MORNING" SAFETY RAZOR BLADES

No Blade at three times the price will give such a smooth shave. Each blade will give at least two perfect shaves. Ten perfect shaves for less than a HALF-PENNY!



3 Pkts for 1/-
15 Blades

BE PREPARED FOR THE WET WINTER MONTHS • QUALITY INDIAN COIR DOOR MATS •



Mottled Coloured DOOR MATS
5/6 & 6/6

No. 1 Size
24in. x 14in.

3/6

No. 3 Size,
30in. x 17in.

5/6

These mats are of splendid quality Indian Coir and will outlast many of the cheaper type. Let us deliver one to your home.

No. 2 Size,
27in. x 15in.

4/6

No. 4 Size,
33in. x 21in.

6/6

MOTOR MATS
1/11 ea.
In Red, Green, Blue and Brown Borders.

"D" SHAPE in Four Sizes
24in. 4/6
27in. 5/6
29in. 6/6
32in. 7/6

THE COMPENSATIONS OF WINTER

Home And Family Life Comes Into Its Own

Summer—Hawke's Bay summer particularly—is something to farewell with regret. Days of sun and beach and open air are reflected in the outlook of our people, and to many the spirit of Hawke's Bay has come to be interpreted as the spirit of summer.

But winter has its compensations. It is not a vista of grey, cheerless days, and cold evenings of rain and wind. It is at this time that family life comes into its own. Home has a greater significance than ever before.

To-day the art of home-building and furnishing, and the manufacture and supply of home facilities, has reached a high level. There is no reason why winter should not mean a period of greater comfort and happiness. To taste the delights of the friendly atmosphere of the home in luxurious—but inexpensive—surroundings is something which should be the right of every family. And in these pages a valuable lesson and some valuable ideas may be learned.

Just over a week ago summer left the North Island. It did not steal away so that its passing was scarcely noticed. It left with a dramatic suddenness. There was no merging of the riot colours of a summer blaze into the subdued tints of autumn, no gradual softening of the texture and the line of days.

Instead, there was one last glorious day when trees and grass shimmered in the glare of a sun that rippled the skin and braced the heart. The next day, grey, wet sky, the distant ranges bleak and ominous, the country cold with a strange silence. It was then that it was noticed that the leaves had turned. In the steely light of the day long lines of trees threw forth the last flowering of a summer's beauty. It was almost a challenge to the winter. But the leaves fell from the trees and carpeted the roadsides. It was a ghostly reminder that summer had gone.

The Home in Winter.
Everyone realised this. Coats and mufflers were donned and in the streets and cafes of Napier and Hastings the womenfolk could be heard arranging their evening parties. It might have been cards, or music, or talk. But all the parties were to be held at home. For in the winter man turns to his home as the animal turns to his burrow.

Fireside Memories.
Over cards or the evening's conversation the summer scene is given a frame and perspective, and preparations made for the spring. There may be plans for business, for the education or career of a son or a daughter, for an even better holiday next year, or plans for parties still to come. There are the memories, recalled among friends, of last year's pleasures. Perhaps there are photographs, or even films, which, however crude they may be, bring back the spirit and joy that has been.

In winter man is perhaps more concerned with his soul than his

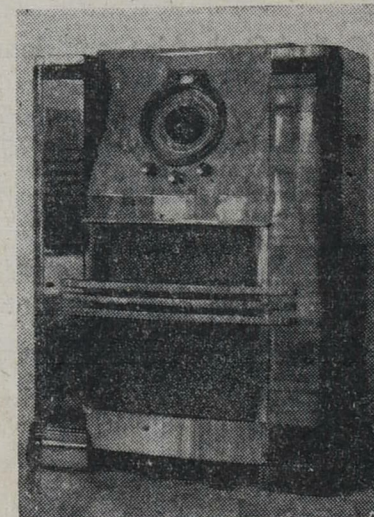
body. In the times when he is alone with his book or radio there is time enough for thought. It may be only an old familiar tune from the wireless, but it brings back a day by the sea when the same tune was played on a portable gramophone. He remembers then, as the day was fading, how the sun dipped quietly behind trees, and long shadows were cast on the shore. At the time the mood was lost in the laughter and gossip of friends. Now he remembers it and how the moon rose over the sea and turned the water to silver.

From the flames and shadows of the fireside such things will be recalled. The women, too, will be thinking of their home. Last year's sun will have faded some things, and these will have to be replaced, perhaps new decorations, new curtains or a new carpet. Always the planning and reflection. Even the talk of football divided between what had happened last Saturday and what may happen next.

Winter Friendliness.
In winter, too, friendships are often deepened, an intimacy struck in the warmth and seclusion of rooms that was not thought of before the stretch of sea and the drive of the sun. Moods during the winter are intense. The substance of living is narrowed, but the essence enriched. Recollection is quickened, the essential of experience caught in a moment's reflection and rid of its superfluous trappings. Anticipation of things is sharper and more real than their realisation. And to heighten these things there is in the homes, on an evening, the close contact and conflict of human personality, the beat of friendship which drives over the argument, be it never so heated. Over cup or glass views and reviews are exchanged, and man gets closer to man. There is a warmth and richness in the winter, a nearness of friendship and a rarer simplicity which may be greater than all the brilliance of the sunny days.

MODERNE RADIOS for MODERN HOMES

Brilliantly engineered and based on an entirely new type of construction, this advanced radio will give you greater satisfaction, regardless of operating conditions. Moderne Radio is the answer to a widespread demand for a quality set at a low cost. Its advanced design and superior performance gives that off-desired—but never until now secured—world performance of radio.



MODERNE RADIOS MADE IN NEW ZEALAND

Give you a wonderful opportunity to support your own country, and at the same time gives you outstanding radio reception for so little money.

Perhaps you do not intend buying a new radio at present. Well, here we come in again. We have every equipment in our service department to put your set in order for the winter. Our servicemen use only the most modern and up-to-date instruments and we can say that we KNOW OUR BUSINESS WHEN IT COMES TO SERVICING ANY MAKE OF RADIO RECEIVER.

Paramount Radio Service

Radio Dealers and Servicemen.

Heretaunga St. East

'Phone 4296

HASTINGS

CLAUSEN'S

HASTINGS ST.

NAPIER

YOU CAN RELY ON

The Popular Verdict!

Modern,
Specialised
Service to
Fine Furnishing
brings
Lasting
Satisfaction
Makes
possible for
every home
new standards
of Beauty and
Comfort.



Let
CHRISTIE'S
Help YOU Realise
Your Furnishing Dreams!

By choosing wisely from a service designed to meet the popular demand for genuine quality at minimum cost, you too can go a long way towards the ultimate in home furnishing standards.

This Week's Suggestions and Offerings for the Up-to-date Home...

New Designs in PATNA CLOTH

New season's supplies of this popular fabric now to hand. Rich Pastel tonings. Brings distinction to every furnishing scheme. Guaranteed fast colour.

40in. 3/11.
54in. 5/6.

Coiled-Coil Air-Conditioned MATTRESSES

The last word in luxurious comfort. Hitherto costly, a new process of manufacture brings these renowned Mattresses within the reach of all. Up to 10 years' guarantee. Made in four styles.

Single £6/7/6 to £10/6/-.
Double £7/17/6 to £13/4/6.

SPECIAL REDUCTIONS in CHESTERFIELD SUITES

We have pleasure in offering a line of modern Suites at really exceptional values. A fine range of Velours in all the desired shades and motifs, all guaranteed, with prices ranging between—

£21 and £27.

The Latest and Last!! in English CARPETING.

You will need to be early on these while stocks last. A super-grade range in body Carpet and Carpet Squares. Newest tonings in a wide choice of patterns. You must see them to appreciate their quality and beauty.

CHRISTIE'S

(A. CHRISTIE & SONS, LTD.)

RUSSELL STREET

HASTINGS

New Furnishings Make New Homes

THE ESSENTIAL POINTS OF MODERN DECORATION Colour, Harmony And Simplicity In Furnishings And Fittings

One of the signs of grace in a very ungracious age is the remembrance of art and industry. They divorced in the last century to produce some of the worst architecture and internal decoration that has appeared in the history of civilisation. Now the bond is struck again.

In the Middle Ages, when men, for all their crudity, had a rare and generous sanity, there was no such distinction of art and craft. Art was one of the many crafts which made up the material scheme of things. For practical purposes we have returned to this point of view.

In few branches of production is this more clearly seen than in that of domestic goods, especially what are called "soft furnishings." This year's fashions will mark a breaking away from extreme modernity. This will not be reactionary. The principle is to take the edge off severity, the stridency from contrast, and the dissonance from discord. Modern simplicity will be retained, its starkness removed. In the contrast of colours, for instance, there is an attempt to achieve a contrast that has an underlying harmony. This is done by contrasting not so much colours, as tones of colours; not so much primary colours, as secondary colours with the primary elements of which they are composed. So the effect of discord is obtained without harshness or blattancy, and a room may be gay without being gaudy.

Curtains of Character.
During the next year curtains will tend to be plain in material and simple in colour. Curtains are mentioned first amongst soft furnishings, since nothing can change the character of a room so much, and, without any basic alteration, make an old room almost a new one.

The general practice is for the buyer to go to a shop, buy curtain materials and make up the curtains at home. Unless the buyer is something of an artist by profession it is doubtful how advisable this method is. The big furnishers would certainly prefer a different one. At the head of their staffs are men whose wide training has been directed to make them masters of design, and in these furnishing stores there are different men for each department. They know at once the particular colour for the desired effect which might bewilder the buyer for months.

In the matter of curtains this is especially evident. It is the finishing touch that makes or mars the room. For deciding upon the type of curtain for a given room the expert would start with the floor, building up his colour scheme from the carpet and walls, the design of the curtain upon the shape and size of the window. To build up such a scheme requires the trained eye. Making up curtains in this way also eliminates waste of material.

Apart from the curtain of simple design and blend, the Indian patna curtain is still in fashion. These curtains illustrate perfectly the tendency to achieve colour contrast with an underlying harmony. The texture is rough and gives warmth and cheerfulness to a room in winter; a weighty effect is suggested though the material is light. The colours are guaranteed fadeless, and such curtains can be used with admirable effect for porches or verandah windows in the summer. Price is controlled by the Indian Government, and is very reasonable indeed.

For children's rooms, chintz curtains are very popular. With a finer weave than linen curtains, they admit of smaller designs, and give, perhaps, a lighter and fresher effect to a room.

Carpets will generally be plain. The modern block and figure design can still be obtained, though fashion now veers to a floral pattern. This will be more restrained and artistic than its former prototype. Modern floral design will be floral without being florid. These carpets should be more serviceable than the block and figure kind, and are intended especially to show dirt less.

Though most modern carpets are without borders, a border can, if desired, be put on to any design by special order.

Carpet Qualities. We got with any thickness of pile. From the finely woven Wilton carpet there is every degree of weight, to pile of an inch in thickness. If the quality of the carpet is good the fineness of weave should make little difference to its wearing value.

In buying carpets, as well as curtains, it is advisable for the buyer to take the furnisher into his confidence. It is unfortunate that this is not more often done. For if a plan of the room is given, carpets can be obtained without seam or join. The extra wear obtained from seamless carpets is considerable.

Again, should the owner of a carpet desire a change of colour and design before his carpet is worn, it can now be dyed to any colour. This, however, is a fairly expensive process.

For Real Rest.
In bedroom furnishings the most marked development is that of the mattress. Modern machinery has been introduced into New Zealand for the production of the inner spring mattress, the price of which should be within the reach of everybody. Prices range from £7 upwards. These mattresses are identical with those used in the modern liner and luxury hotel. They are air-conditioned and made up inside of small and highly tempered springs.

They give added comfort and need turning only once a fortnight. It is advisable if an inner spring mattress is bought to ensure that the wire core, on which the mattress will be placed, is firm. In England it is customary to rest these mattresses on special wooden bases, so making any sag impossible, and assuring increased wear.

Pillows will still be made from kapoc, though quality is said to be better, and they should not waste away so much.

Eiderdowns are chiefly of the single colour type. They can be bought with coloured patterns, but single shades have been produced of such a delicacy, combining the sense of both warmth and freshness, that it is unlikely, for the time, that these will be superseded.

Friendly Furniture.

There are some interesting developments in upholstery work. There are chesterfields that open up for double beds and chairs for single beds. These should be especially attractive for those who live in flats. In appearance for day-time use they are indistinguishable from the normal chesterfield or chair, except that there appears an extra thickness in the seating. Their conversion for night-time use is ingenious. The back is lifted a few inches. The seat is then raised from the back and swung forward over itself on hinges at its front, being held above the floor on wooden supports at the end. Sheets, blankets, mattress and pillows are already in position when the seat is swung over itself, the occupants of the bed sleeping with the feet towards the back of the chesterfield, their heads, shoulders and bodies across the seating, which has been thrown over and forward.

In the style of armchairs there is little change. The box-shaped chair retains its popularity, and generally chairs are shaped on a basis of straight lines or sweeping curves. Niggardly details of shape are invariably omitted.

Cushions can set off the style of a room. The material most used in covering, at present, is velours, the patterns on which are said to wear exceptionally well. Generally cushions should be chosen with the same attention as are curtains. Like curtains, they set or destroy the character of a room.

Homely Homes.

If there is an underlying principle behind the newest trends in furnishings, it is to emphasise the homeliness of home. There was the tendency a few years ago to transform the home into something that was a mixture of an American cocktail bar, a dentist's operating room and a modern liner. This fashion is now on the wane. Intimacy, warmth and cheerfulness are now to be stressed. There should be an added comfort and ease in the home, the spirit of the fireside rather than the built-in central heater. It would seem that art and industry are now striving to express, and even merge themselves into, the fabric of the average person's living. This is the old way and the best.

ACHIEVEMENT IN POWER N.Z.'S ELECTRICITY SUPPLIES LOW COSTS

New Zealand is fortunate in its electrical supplies. Nature has endowed the country more liberally than most with the required conditions for an efficient hydro-electrical output.

In the production of electricity by water power it is not so much the individual natural requirements that are difficult to find, but the combination of them in a single place.

In England, for instance, there is sufficient quantity of water to supply the whole country with electrical power, but either its position is not sufficiently high, or if high, it is inconvenient for damming and for piping off down a steep slope to the generating station. In England electricity production by water power seems impossible for the present. Efforts to evolve a scheme for tidal generation have so far been too expensive and unreliable for practical demonstration.

New Zealand is blessed, like Switzerland and Norway, in having all the necessary conditions fulfilled in the same place. The Government, which has developed the generation of electrical energy throughout the country, was not slow to realise these natural advantages.

It is well known that hydro-electricity is cheaper than fuel-produced electricity. In the North Island, of electrical costs, 85 per cent. are fixed charges, representing the sinking fund and interest paid on capital invested. These charges do not vary with the turnover. For fuel-produced electricity the relation of costs is the reverse of this, the major portion of the costs being regulated by the turn-over and increasing or decreasing with it.

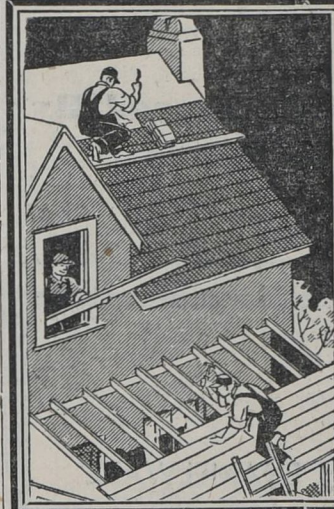
Because of the cheapness of production electricity is available for almost every home in New Zealand. The grid system and the overhead wires carry a current of 110,000 volts from the generating stations. This is distributed from regional sub-stations at 11,000 volts. New Zealand has reason to be proud of its electrical development. In a little less than 20 years electricity has been made available to 93 per cent. of the country's population, who may enjoy, if they wish, the luxuries of electric fires, vacuums, cookers, washers, dryers, and even electrically-heated blankets for the bed. This is a solid achievement.



YOUR HOME NEEDS A PIANO!

Harston's make it possible for you to possess one of the world's finest instruments on the very easiest terms.
Inspection Invited.

HARSTON'S
"For Everything Musical"
Hastings St. — Napier



Premises YOUR HOME!

GET YOUR HOME READY IN TIME FOR WINTER AND WET WEATHER!

ACT NOW—CONSULT
E. F. FERGUSON

JOINERY FACTORY.

E. F. FERGUSON

Phone 1119.
George's Drive.
NAPIER



Above you see illustrated a portion of the extensive stocks of Modern Furniture in our Hastings Street Premises.

OUR BUSINESS

has reached its present large proportions in a little over twelve months simply because our trading policy has always been

HONEST VALUE FOR MONEY SPENT!

If you have not already availed yourself of the service we are equipped to give, make up your mind to investigate our claims. Just call in and have a look round—you will not be pressed to buy—EXCEPT BY OUR VALUES.

New Designs in CHESTERFIELD SUITES (available in an extensive range of covers), DINING-ROOM SUITES, and BEDROOM SUITES have just arrived.

Our stocks include Fireside Chairs, China Cabinets, Oak and Rimu Occasional Tables, Axminster Carpets, Axminster and Wool Reversible Rugs, Axminster and Wilton Runner, Congoleum Squares, Duchess's Chesis, Dining and Kitchen Chairs and Tables, etc., etc., and afford you a selection seldom obtainable outside the four centres.

OUR EASY PAYMENT PLAN

makes it possible for you to enjoy the pleasures of a well-furnished home immediately.

MAKE HOME A PLACE TO BE PROUD OF!

NAPIER AUCTIONEERING

CO., LTD.

FURNITURE SPECIALISTS

HASTINGS ST.

NAPIER

Now is the time to brighten up the Kitchen, Bathroom, and Sitting room and make your home the envy of your friends. First quality Paints blended to suit your own colour scheme at no greater cost than an inferior product.

Be Sure and Specify "VICTOR"

MAKE YOUR HOME MORE MODERN AND BEAUTIFUL!

USE "VICTOR" TUNG OIL . PAINT COMPOUNDS

GREATER COVERAGE AND ENDURING PROPERTIES — WATERPROOF — ANTI-CORROSIVE

Manufactured by **N.Z. PAINT & VARNISH CO., LTD.** Shelley St., Napier.

STOCKISTS: F. L. BONE, HASTINGS — JOHN WINLOVE, WAIPUKURAU — P. J. McILVRIDE & SON, DANNEVIRKE



MODERN RADIO OPENS UP NEW WORLDS

THE DEVELOPMENT OF WIRELESS

ENTERTAINMENT AND EDUCATION

NOW A NECESSITY

Bringing The World To Your Fireside

It is now possible to hear a performance by the Vienna Opera better in the comfort and quiet of the home than would be possible at the back of that magnificent opera house. This is not to say that radios and gramophones (the two can hardly be considered apart) are now the "real thing." It does mean that the best recorded versions of an actual performance can be appreciated more than would the actual performance from a bad position.

This is to say much. Perhaps no invention has developed on its technical administrative and artistic sides so quickly and progressively as radio. It does not seem long since the first days of the crystal set.

The radio owner was then a pioneer, a man of mystery, almost a mad fellow, a man to be treated with awe. In England there were people who regarded these first enthusiasts as almost magicians, men who might even raise devils and hypnotise the neighbourhood with new black magics.

There was ground for these suspicions, too. The earliest radio fiends were fanatics, their patience inexhaustible, their concentration terrifying. The first radios looked like a magic box. There were ominous-looking coils, strange tubes of glass, dim flickerings of light and sometimes startling flashes. There were even more awful noises, wails that seemed flung from the Great Beyond, tearings and crashings that seemed to announce the first crack of doom.

The early radio man had a language of his own. It, too, sounded full of devils. There was talk of crystals, coils, myster-

ious ether waves that were making London fade. And then to produce the human voice from the little box the radio man, with that quaint, impersonal calm, would announce that he had to tickle the cat's whiskers delicately. No wonder the anxious friend used to rise from his chair, make the hurried excuse and leave the enthusiast to fend for himself in the midst of his cracklings and screamings and flashings.

To the pioneer those early days were glorious days.

Now radio is almost too efficient to hold its former thrill, that careless rapture when, for the first time, a new station was logged. Today there is a different set of thrills. There is the satisfaction of a first-class entertainment when desired, the possibility of hearing entertainment which, until the wireless age, was a preserve of the aristocracy alone.

With the early invention of the all main valve receiver, later the super heterodyne receiver, moving coil speakers of every conceivable type, and more recently the all-wave set, the wide world is, so to say, at the radio owner's feet. By the single switch of a button, the leisurely turn of a knob, he can cross continents and oceans with the single stride of a colossus, he can embrace the world in his fingertips.

On special occasions kings and princes may converse with him. Once he was allowed to invade the privacy of a palace. The culture and amusement of the world is his for the stretching of an arm. He may educate himself and never leave his doorstep.

This is not to suggest that radio development has nearly reached perfection. There is much that remains to be done. Tone has not improved enough during the last two years. The super-fine tuning of the all-wave set has so far meant a hardening and coarsening of tone. This is not always so, but some excellent short-wave sets have tended to reproduce the boom in tone which was eliminated two and three years ago. This, at least, is a problem with which radio manufacturers will have to deal.

There is little doubt that these improvements will be made soon, if some of them are not already made. In the meantime, few industries can boast so high a standard of efficiency as radio. Sets now are workmanlike, exciting and reliable. As a piece of furniture the radio cabinet never lags behind the modern trend. Cabinets now are mostly plain and straight in design, but with the corners rounded off. There is a pleasing sense of dignity without pretentiousness, solidity without heaviness and simplicity without bareness. Wood is choicely selected and beautifully stained and polished.

A modern home is hardly complete without a wireless. As a piece of furniture it is highly desirable; as an organ of culture it is indispensable.

THE ROMANCE OF GAS

FROM A CURIOSITY TO A NECESSITY

MANIFOLD USES

Present And Future Development

It is over 150 years since John Clayton and Jean Pierre Minchellers demonstrated the use of coal gas as an illuminant. Their flame was yellow and luminous, burning without any previous mixture with air. But it remained for William Murdoch to demonstrate the first practical application of this discovery on any considerable scale.

He practised in a small experimental plant of his own until he lighted a Soho factory with gas in 1795. Doubtless the lights flickered continuously and frequently went out; but it was an impressive sight for all that, and in 1805 he was awarded the Rumford Medal of the Royal Society of London for his labours. Four years later the first gas company in England was incorporated.

Twenty years later nearly everyone in England was arguing about the political reform. Lord Grey was making himself unpopular with a diehard Tory King, and Wellington was trying to compromise. In the country and the new-formed towns the populace was squabbling, even rioting at times. In taverns flagons were smashed against skulls in the continual wranglings after reform.

Sharpe's Work.

In the midst of this turmoil one man at least was calm. James Sharpe, of Northampton, was not very interested in politics. He was much more interested in gas, and instead of brawling in taverns he retired to his home and thought about gas and heating. Before the reformers had got their reform James Sharpe had grinded his chop on a gas stove of his own invention. Gas cooking in England developed from 1832.

The Americans seem to have been suspicious of gas. At first they would only use it for lighting the streets; later they used it in public buildings, but not until 1870 was it in general use in the home. Since then, gas has been used for almost every type of work demanding heat and light—for bread-making, candy making, roasting coffee, and pasteurising milk. It has been used for melting, vulcanising, forging, heating, galvanising, welding and cutting, for tempering alloys and refining metals.

The future for gas is even more extensive than its present. It is

PAINTS AND VARNISHES

NAPIER FACTORY'S PRODUCTION

The New Zealand Paint and Varnish Co., Ltd., offer the Dominion's householders a home-beautifier that has the three-fold advantage of being economic, easy to apply, and permanent in result. This up-to-date medium is their special enamel-finish lacquer, manufactured in all the latest popular pastel shades, and just the thing for renovating kitchens, bathrooms and furniture.

This enterprising company considers that, with the modern machinery with which their factory in Shelley Street, Napier, is equipped, they are able to supply paints and varnishes of all description, which compare more than favourably with imported lines. Evidence of the satisfaction they are giving is contained in the fact that the New Zealand Government have adopted their Permanent Roof Green and their special floor varnish for renovating Public Works camps and the Barracks in the Hawke's Bay district.

Products of the New Zealand Paint and Varnish Co., Ltd., are obtainable from the following distributors: F. L. Bone, Hastings; John Winlove, Waipukurau; and P. J. McIlvride and Son, Dannevirke.

estimated that about half the potential efficiency of coal is wasted in domestic and industrial uses. The use of gas instead of raw coal will conserve energy and relieve the drain on the coalfields of the world.

Not Merely An Ideal.

From the aspect of health alone gas and coke will inevitably be used much more than now as fuel for home and industry. The smokeless city will become a fact and not an ideal.

New Zealand would seem about to embark on a policy of domestic industries. Where coal might be used as fuel, the alternative use of gas will have to be seriously considered. Not only will gas be cheaper as fuel, but its use will make possible the reclamation of valuable by-products which in the past have gone up the factory chimney as smoke.

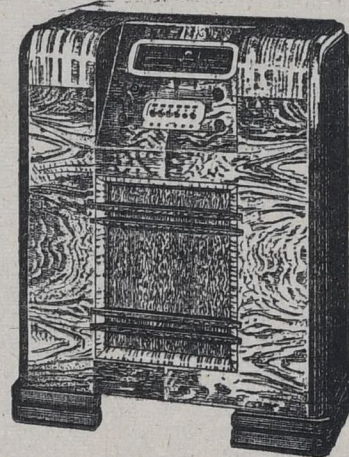
As gas is used extensively throughout New Zealand now for cooking purposes and domestic heating, so in the very near future its use as industrial fuel will have to be examined.

Gibraltar, once the symbol of Britain's greatness, was now the symbol of her weakness, said Mr. W. R. Lascelles in an address on defence at Christchurch. Mr. Lascelles, who was discussing the position in the Mediterranean, said that Gibraltar was untenable as a naval base because it was surrounded by enemy territory. Malta was in a similar position.

ATTENTION!

Home-makers of Hawke's Bay . . .

Those whose interest is in the possession of a beautiful and well-equipped home. Visit our showrooms in Napier and Hastings and see the marvellous displays of new Radios, Refrigerators and Electrical Appliances that pave the way for greater efficiency and more economy in every household task.



GULBRANSEN

"To-morrow's Radio To-day"

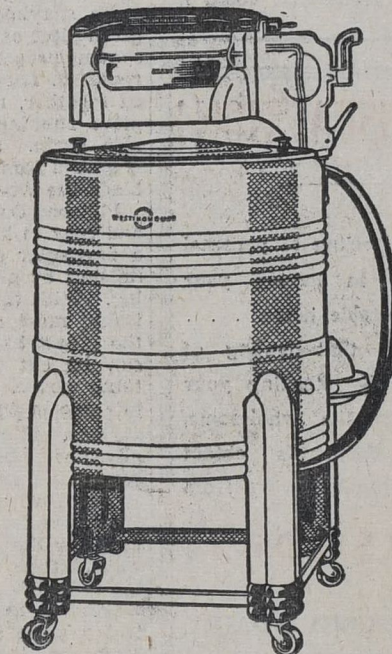
The new 1939 Gulbransen Radios are beautifully finished and housed in handsome cabinets of figured walnut. A new thrill awaits you when you see and hear these new Super Radios. — Arrange a demonstration to-day.

WESTINGHOUSE

MATCHED WASHER IRONER "Makes Monday Fun-day"

This latest product of the world-famed Westinghouse factory embodies all the recent scientific principles in washing, whereby the soiling properties in the clothes are gently yet positively extracted without the slightest ill-effect to the material. The new improved wringer attachment has touch-board safety release, automatic pressure—with finger-tip control. — You will delight in what you used to dread.

Arrange now with Lockyer's



LOCKYER'S LTD.

NAPIER

HASTINGS

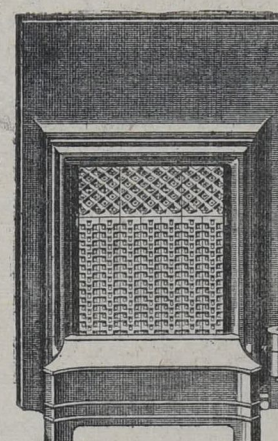
GAS FIRES!

Are Smarter, Cleaner, Cheaper, Friendlier!

And GAS will be in every modern home . . . so why not make your home more comfortable now? There's nothing quite like the healthy flood of warmth that is at your instant command with a Gas Fire — unless it be the warm rays of spring sunshine. There's nothing like the cleanliness and convenience of a Gas Fire; and there's nothing like it for economy — but what people think best of all is the simplicity of this modern appliance. It adds still more charm to the most charming home setting.

INSTANT WARMTH WITHOUT DUST & ASHES

NAPIER GAS CO. LTD.



LARGE RANGE OF NEW MODELS AND COLOURS — SEE THEM AT OUR NAPIER AND HASTINGS SHOWROOMS.

COMFORT IS ASSURED!

you arrange your home with the Best Furniture Manufactured by

E. SAWYER
STORTFORD LODGE, HASTINGS.

The Home Owes Much To Timber

THE NEW CRAFTSMANSHIP IN WOOD

FURNITURE TAKES ON NEW SHAPES AND ATTRACTIVE DESIGNS

New Zealand is fortunate in its timber. It could, if it desired, supply all the timber needed in the country. With the new import prohibition on American timber New Zealand will, in fact, supply most of its own timber, imported Japanese oak excepted.

Most of the New Zealand timbers are hard and close-grained. They are durable and withstand most weathers. Rimu, matai, totara, which are used for building, as well as for furnishing work, are especially fine woods and resist even the pernicious borer. Furniture made from heart of rimu over 40 years ago can be seen without a trace of borer penetration, shrinkage, or warping.

Imported timber has also been used for building purposes. For houses the Californian redwood is perhaps the best of all. A light, soft timber, its durability has hardly yet been estimated, though it is known to be longer than 1000 years. When first used in New Zealand it was found that this wood burnt the nails that were driven into it, due to acid in the wood reacting on the metal. Now galvanised nails are used.

Oregon pine was another American wood imported. Heavy, strong and straight grained, it could not

be surpassed for the beams and roofings of large buildings, stores or warehouses. Timbers could be got as long as 40 feet, the wood resisting warping and shrinkage even more than heart of rimu. Import of both Oregon and Californian redwood will now be stopped. This is perhaps unfortunate.

The Use of Plywood

For household purposes no type of wood is more widely used than plywood. The extension of its use in the last ten years may claim to be one of the remarkable developments of timber work. In three-ply three shavings are taken from a given piece of wood, the thickness of shaving proportionate to the strength required. These are glued and pressed together, the grain of the inside piece running counter to the outside grain. Strength and rigidity is gained from the inner piece which binds the wood to itself.

Plywood does not warp. It is light and easy to handle. Before use for a particular construction it can be finished by planing and sand papering. With the solid timber the finishing must usually be done when the object has been constructed. It can be cut to any shape or size, takes varnish well and can be highly polished. It never cracks nor shrinks. Rimu plywood is especially fine. In appearance plywood combines solidity and delicacy, strength without heaviness. It is small wonder that plywood is now used for the panels of doors and walls, for wardrobes, dressing tables and bookcases. It is doubtful whether a normal person could detect a piece of plywood panelling from one of solid wood.

Beautiful Rimu

There is every sort of plywood, rimu being perhaps the most beautiful. With a light varnish, figured

patterns of every variety can be achieved. By careful selection of wood a figured grain can be obtained which will not have beauty merely in its waywardness, but will represent an actual scene. Plywood from Japanese oak can make as beautiful an effect. This wood will stain especially well to suit the taste. From wood stained dark, attractive fire screens can be made, inset at the centre with a tapestry. Designed with taste the wood will set off the colour of the tapestry, the tapestry the grain of the wood. Such screens can be seen and made in Hastings. They are a pleasing variation to the metal screen.

Tea wagons are another type of minor furnishing made largely out of plywood. These also look well in dark stained oak. There are some new designs in these, the tray or trays of the wagon encircled by two round hoops along the longer side. These seem to give a clearer view of food upon the wagon, for the hoops hold the trays in position and the legs, from castors to the top tray at each corner, are done away with. The effect to the eye is light and pleasing and the top circle of the two hoops can be used as a sort of handle bar by which to push the tray.

Curves in Vogue

This type of minor furnishing blends perfectly with changes in the style of larger furniture. Generally the recent severity is passing. The coldness of the straightline is giving way to the graciousness of the curve. Women's dressing tables, for instance, are the same in general plan, but the drawers at either side are curved, instead of flat, in front. The tendency has gone further than this. Dressing tables now are made in which the drawer space at either side is completely circular, the two circles being joined by the dressing table top. The plan of such a dressing table, crudely drawn, would represent a pair of spectacles.

The introduction of bent wood work has made this development possible. For the curved drawers for a dressing table, compressed pieces of plywood are used, shaped in a pressing machine. For the circular hoops of tea wagons solid wood is used, the bending done by a steam method. The wholly upholstered chair is varied, too, by the chair with wood arms of a sweeping curve. Chests and wardrobes, wire-less cabinets and book shelves all now tend to be rounded off.

Less Ornament

The re-introduction of the curve in design has meant as well the elimination of superficial ornament. The grafted diamond studs on the surface of the straightlined cabinet are disappearing—carving is almost non-existent. With the curve has come

the plain surface, less dust in niches and an easier time for the house wife.

Book shelves tend to be small and of a portable kind that can be placed anywhere on the floor space. Generally at one end there will be a small cupboard with the shelves rounded at the opposite end, running on both sides of the fixture to the cupboard. Such fixtures and other cabinets will look well in rimu, dark mahogany, oak or a light ash. Usually they will be in plywood. For the reader the extending book shelf is the best.

Amongst special woods the spotted gum is one of the most attractive. A light wood relieved by dark spots and flecks, it can give variation to a room, and with careful selection beautiful figurings and shades can be obtained.

Matal For Flooring

For flooring heart of matal is advisable for wear and appearance. Kauri is a beautiful wood, rich in colour and one that can be got in pieces up to 40 feet long. This is used for counter, sink and table tops. Now, however, it is expensive, most of it exported to Australia in return for import of their hardwood. Kauri is one of New Zealand's choicest woods.

All the best New Zealand woods are hard and closely grained. Unless used when green, and this should always be avoided, they will resist cracking and warping. Furniture can be made now in almost any colour, the grain of most New Zealand timber providing ample variety of colour, tone and design.

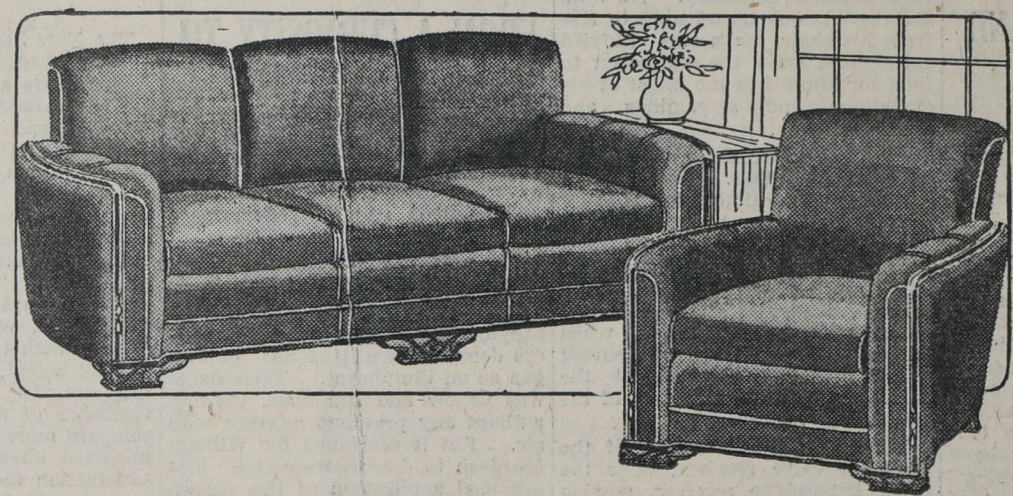
Hawke's Bay, too, has a climate that deals kindly with timber. Unless equinoctial gales are prolonged unduly, wood will always retain its moisture. Most of the New Zealand wood bought is already kiln dried and seasoned. If not the builder or furniture manufacturer stores the timber himself, dries it, and allows it to season for twelve months before use.

Effect of Climate

Foreign timbers are usually dried before importation and do not need seasoning. The Hawke's Bay climate is not so good for imported as for home timbers, the timber having been brought from areas whose climatic conditions are different from those in Hawke's Bay. Foreign wood, therefore, and especially Japanese oak, is given a further chance to season and acclimatise by prolonged storage before use.

For the best preservation of furniture it is advisable to keep it removed from fires, windows and the direct line of doors. Any variation in heat or humidity will thus be considerably reduced. If this is done the Hawke's Bay climate will be found to be very kind indeed to furniture.

★ HOME COMFORT ★



GOOD NEWS FOR CLEVER FURNITURE BUYERS

DAVID McCRAE
MATTRESSES
COMBINATION BEDS
TALLBOYS, DUCHESSES
DINING SUITES
PRAMS

CARPETS, RUGS
LINOS, CONGOLEUMS
Over 80 Rolls to choose from
RUNNERS
PUSH CHAIRS

— Let us advise you for Home Comfort —

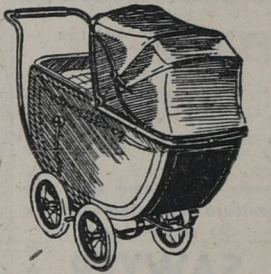
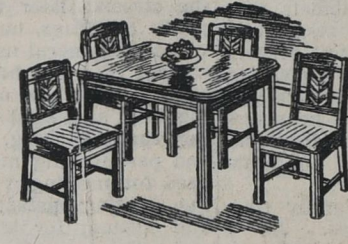
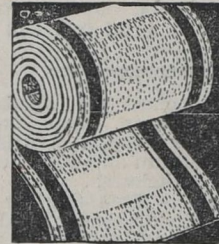
INSPECTION INVITED —

— CORDIAL WELCOME

JAS. W. SHAW

Queen St., Hastings.

'Phone 2465



Modernise your Home!

...INSTALL

ELECTRICITY

LIGHT BY ELECTRICITY

For Convenience and Economy

- THE BEST
- THE CLEANEST
- THE CHEAPEST

Use Electric Power



COOK BY ELECTRICITY

It is Clean, Cheap, and Most Effective

GIVES NO TROUBLE

Cook By Electricity

Moffat

RANGES ON EASY TERMS
from 8/- per month

HAWKE'S BAY

ELECTRIC POWER BOARD

Heretaunga Street

HASTINGS



THE NEW H.B. WINTER



OVERCOATS

AND ALLIED COMFORTS

NEWEST, SMARTEST, AND BEST VALUE

Winter weight SCARVES

In the new small designs featuring Red, Green, Brown, and Navy tonings. A real comfort. 6/11

GLOVES

In Brown Nappa Leather. Soft, fleecy-lined; one-dome fastening. Made in England. Great value. 10/6

Viyella SOCKS

In the popular, plain marl tonings. Best value obtainable. Unshrinkable. 3/11



English BOSTOCK SHOES

In Box Calf, Tan Calf, and Glace; several smart lasts to choose from. Sizes 5 to 10 and in half sizes. 37/6



In Finest English Velour Coatings and smartly checked-back Tweeds. Double-breasted, form-fitting, and double-breasted all-round belt styles. In Deep Blues, Greens, medium Fawns and Browns. Beautifully cut. 115/-

Hallensteins HASTINGS. Also NAPIER and DANNEVIRKE.

TELEGRAPHED INVESTMENTS BENEFIT ALL

Better For Clubs And Public

EXTRA REVENUE FOR THE GOVERNMENT

Useful Hawke's Bay Team For Hawera

(By MOTUROA.)

Every now and again there comes a wave of support from various sections of the racing community for some reform calculated to better the Sport of Kings. The panacea for the racing ills supposed to exist to-day is the re-introduction of the licensed bookmaker, and the movement is meeting with support from many quarters.

Judging by the reports from meetings of the Owners', Trainers' and Breeders' Associations in some centres, many are so enthusiastic in their advocacy of the bookmaker that one wonders where they have been doing their major betting in the last quarter of a century!

And, if the loud-voiced odds merchants were restored to our racecourses, one still wonders whether these same owners and trainers would wager their money there (where the odds might be cramped by reason of "prices" set by the totalisator) or whether they would, as in Australia and other places, make eleventh-hour plunges far away from the racecourse, and thus enjoy better "starting" prices.

That there are thousands of alleged bookmakers in New Zealand to-day is a well-known fact, and some of them in the dim and distant past were licensed to bet on our racecourses. But this section is now in the sere and yellow, and the opportunity to call the odds in the open in all sorts of weather and to stand up to a last-minute rush on a favourite is not likely to appeal to them.

Their present policy of doing business with well-known persons of integrity by post or telephone, or through agents, is much more congenial. They are not likely to forsake the comforts of the office or the "pub" for the rigours and the hustle of the racecourse.

Whether the new generation of so-called bookmakers would make a success of an intricate business, like odds-laying, is open to doubt. Few have the necessary knowledge of bookkeeping to balance a ledger, and fewer still would be able to pay the "prices" which are often obtainable on the totalisator.

Now, experiments are most times dangerous and, in my opinion, the betting by book-makers is not likely to raise the status of racing to its former affluence. Too much tinkering with the laws relating to legitimate betting and the retention of harsh over-taxation (a relic of the urgency of War years) has made the way hard for racing clubs for many years.

It would be far better to revert to the tried, tested and proven methods of the past, when investments were telegraphed to the course for singles and doubles wagers to the benefit of bettors, who received their full dividends; to the clubs, which reaped the benefit from the increased turnover; and to the Government, which had its "rake-off" in money-order telegrams, postage, stamp duty and totalisator percentage.

Racing was brighter in those days. The volume of betting was greater and more diversified. And, because of the better prices ruling generally, owners did patronise the totalisator. Illegal chances of wagers in those days were but microscopic rivulets in the huge Amazon of betting.

Egmont Candidates. HAWKE'S BAY stables will be well represented at Hawera next week, and, judging by the way some of the locals have been working on the tracks at Hastings, they should more than pay their way at the fixture.

Royal Spades holds prospects as bright as any of the provincial representatives, for Jim Price has improved him out of all knowledge. If he runs up to expectations the first day it is likely that he will be given an opportunity to prove himself over a middle distance in the big hack race the second day.

Iddo is still carrying a fair amount of condition, but this useful gelding comes to hand quickly and his race the first day may bring him along enough to be raced over the hurdles the second day. However, in view of later meetings his form will be closely watched.

Golden Melody, who raced well at Hastings, will be found contesting the Hack Scurry. This solid Hunting Song-Blue Jay three-year-old has improved lately and he is not likely to be neglected by form followers.

A Smart Galloper. LADY STELLA gave a brilliant exhibition over a round of the schooling hurdles at the beginning of this week and she left the impres-

WILDFLOWER GALLOPS SMARTLY

AWAPUNI TRIALS

Preparations For The Egmont Races

Most interest in the gallops at Awapuni yesterday morning was centred in the work of the Manawatu contingent for Hawera and several efforts were very pleasing on a dead track.

Brazil gave a further indication that longer distances may be more in his line by finishing better than Corroboree over seven furlongs in 1.36 on the outside of the course proper.

Catalogue came home from the half mile in the concluding stages of his six furlongs in 51, working with great dash.

Porotiti and Yed Prior ran their five furlongs in 1.9.

Renascor and Warehi ran their three furlongs in 41, similar time being recorded by the Philamor filly Colibri.

Erebus (P. Jarvis) schooled well over a round of hurdles.

Riotous (McDowell) jumped proficiently over the double brush and looks well for the Egmont Steeplechase.

Conveyer schooled earlier in the week, while Royal Choice has begun his initial schooling lessons.

Conveyer and Power Chief bowled along over five furlongs in 1.10, working nicely.

Wildflower put up the best time of the morning to just beat Old Surrey over six furlongs in 1.20, hitting out in her best style.

Golden Ridge gave Seyfried a big start and beat him home from the half mile in 55.

Cuisinier and Aurora's Star ran five furlongs in 1.9, similar time being credited to Girl Pat and Parian, and Verey Lights and Diamond Cutter.

as he looks more solid now, he should pay his way during the winter meetings.

Master Hector is all the better for his racing on the flat and his efforts at race indicated that he was near his best. He ran several quite good races last winter over the big fences and, with most of his opponents in the Egmont Steeplechase rather short of condition, he may have more than an outside chance.

Cuisinier, a winner at his last three starts, is doing all that has been asked of him at Awapuni and will be in demand at Hawera, even though he has his full share of weight. Cuisinier is a good beginner and that will be an asset in the big fields he is likely to meet there.

Entries for Gisborne. AN attractive programme has been framed by the Poverty Bay Turf Club for its steeplechase meeting on the Makaraka course on May 13 and 15, and Hawke's Bay stables are likely to be freely represented at this popular fixture.

The jumping events are the Park Hurdles (of £130, 11 miles) and the Hack and Hunters' Steeplechase (of £155, about 2 1/2 miles) on the opening day, and the Gisborne Hurdles (of £130, 11 miles) and the Te Hapara Hack Steeplechase (of £155, about 2 1/2 miles) on the second day.

The open flat events are the Wakanee Handicap (of £130, one mile) and the Tramway Handicap (of £110, seven furlongs), while the Winter Oats (of £140, 11 miles) and the Tauranganui Handicap (of £120, six furlongs) are run on the second day.

There are a maiden and a novice races while hack sprinters and hack middle-distance horses are well catered for, there being a Hack Cup the second day of £100 and a £25 trophy that will prove a big attraction.

Nominations for all events must be made with the secretary, Mr G. H. Seats, Gisborne, at 8 o'clock to-night (Friday).

Laughing Song has improved since the Waipukurua meeting and is evidently showing her appreciation of the easier track conditions. Judging by the dash she has been putting into her work it would not surprise to find her giving a good account of herself before the Egmont meeting is over. City Song was entered at Hawera, but is not eligible for handicap events.

Quilp is a smart beginner and he would need only to go off with his usual alacrity to make things very interesting in the Hack Scurry at Hawera. He appears to have done well since racing at Easter and the easier track conditions do not appear to worry him.

Ebb and Flow has been schooled recently and, though a steady improvement can be noticed, the big

ACCEPTANCES FOR EGMONT TO-NIGHT

HAWKE'S BAY owners and trainers are given a final reminder that acceptances for all first day's events at the Egmont Racing Club's winter meeting at Hawera on Thursday next close with the secretary, Mr A. K. Fyson, Hawera, at 9 o'clock to-night (Friday).

Tidal gelding has yet a lot to learn about the game before he can be recommended to backers. However, as he is a good-boned gelding and is solidly built, Ebb and Flow may come good later on.

Handles Heavy Tracks. LE TOUQUET is again hitting out in good style and the chestnut will probably accompany Ebb and Flow to Hawera. Le Touquet has run some fine races at times in soft going and he may secure more than expenses out of the meeting.

Solaria has been able to do very little racing this season owing to the hard tracks, but Mr M. Lane has him looking really well and it should not take much to bring him back to winning condition. He will appreciate the easier going at Hawera this week and may not return empty-handed from the meeting.

From the same stable there is Earl's Court, who has also been waiting for the tracks to become easier. The Gainscourt gelding has a fair turn of pace when right and,

THINK OF ENGAGEMENT RINGS THINK OF H. J. GRIEVE, LTD. JEWELLERS HASTINGS

COSY DRESSING GOWNS and PYJAMAS FOR MEN'S & BOYS' WINTER WEAR. The rapid approach of the colder weather emphasises the need for warmer clothing, hence M. & G.'s timely display of comfy garments you'll be glad to wear — when winter comes!

MILLAR & GIORGI THE GREAT LTD OUTFITTERS

No Worry! No Delay! No Expense!... When your Car is Winter Tuned. Keep Clear of all Winter Driving Hazards. Full Stocks of all Spare Parts, Windscreen Wipers, Etc. P. GIBSON & SONS HASTINGS Phone 3980

TIMBER FOR THE FARMER. We hold full stocks of all farming timber. Posts, Gate, Yard and Building Timbers are lower priced at Hawke's Bay's Premier Timber Merchants— McLEOD & GARDNER, Ltd. Sawmillers - Market St. - Hastings

BLYTHES HOME FURNISHING WEEK! CONTEMPLATING NEW FURNISHINGS? Then you cannot do better than pay a visit to Blythes, where every article you buy meets a standard of quality and value that assures long wear and complete satisfaction. Look over these items of interest, inspect the values in our big window display, and decide to refurnish at Blythes.

MANCHESTER DEPARTMENT. HORROCKSES TYME-TEST SHEETS. HEAVY TWILL UNBLEACHED SHEETING. PLAIN LINEN FINISH PILLOW CASES. PURE IRISH LINEN TEA TOWELS. BRITISH ADMIRALTY TOWELS. CHECK JACQUARD TOWELS. VANTONA BLANSHEETS.

VANTONA. VELDURA. "NAPIER" ALL WOOL BLANKETS. 3 Only Pairs "LACONIA" BLANKETS. 2 Pieces STRIPE PYJAMA FLANNELETTE. 2 Pieces NURSERY CLYDELLA. ALHAMBRA QUILTS.

FURNISHING DEPARTMENT. BODY CARPETS for Wall-to-Wall Covering. 27in. AXMINSTER BODY CARPET. 27in. IMPERIAL AXMINSTER BODY CARPET. CARPET SQUARES. 10ft. 6in. x 9ft. AXMINSTER SQUARE. 9ft. x 9ft. AXMINSTER SQUARE. AXMINSTER RUGS.

WOOL REVERSIBLE RUGS. CHINESE BATH MATS. 36in. REVERSIBLE CRETONNE. 50in. AMERICAN THATCHWEAVE. 45in. CURTAIN DAMASK. BEDDING BY BLYTHES. ALSO IN STOCK ARE— LINOLEUMS.

DECIDE TO REFURNISH AT BLYTHES. Printed Designs from 6/11 yd. Inlaid Designs from 10/6 yd.

