

HASTINGS THEATRES

TO-DAY
At 2.15 and 8 p.m.

DEAF STATE AIDS
Amalgamated Throughout
Theatres Ltd. N.Z.
HASTINGS LEADING THEATRE

Proudly We Present
A. E. W. Mason's Stirring Adventure
(In Glorious Technicolor).

THE FOUR FEATHERS

Starring
Ralph RICHARDSON
John CLEMENTS
C. Aubrey SMITH
June DUPREZ

(Recommended by the Censor for Adults.)

PLANS AT THEATRE TELEPHONE 2674

COSY
The Home of Good Entertainment.

2 p.m. TO-DAY 8 p.m.

It's hard to get—Thrills, Laughs, Excitement and Romance in one Picture—But Warner Bros. did it in this sparkling entertainment gem of revelry.

DICK POWELL ★ **OLIVIA De HAVILLAND**
Charles Winninger, Allen Jenkins, Bonita Granville

"HARD TO GET"

(Approved for Universal Exhibition.)
Excellent Selection of Features: Musical Comedy Colour Cartoon —
Big Time Vaudeville News and Cartoons

NOW—Daily at 2.15 and 8.0

Metro-Goldwyn-Mayers Show World Wonder—
Stars—Romance—Ice Spectacles—a Grand Story!

"THE ICE FOLLIES OF 1939"

Joan CRAWFORD, James STEWART,
Lew AYRES, Lewis STONE — and
THE INTERNATIONAL ICE FOLLIES.
The Entire Ice Revue in Technicolor.

First Half
"CARRY ON," a vital message to New Zealand — Pete Smith
Specialty, Radio Amateurs —
Colour Travel — Air Mail
News, Graphic War Pictures,
Davis Cup Tennis, etc.

Regent
Hawke's Bay's Pre-eminent Theatre
LATEST DEAF AIDS INSTALLED.

(Approved for Universal Exhibition) Plans at Suttcliffe's—phone 2822.

MUNICIPAL PICTURES

TO-NIGHT 8 P.M. (THE FAMILY HOUSE FOR VALUE) TO-NIGHT 8 P.M.

A Feast of Comedy-Romance, Thrills and Witty Dialogue.

Edward Everett Horton
Genevieve Tobin
Alistair Sim — in
"THE MAN IN THE MIRROR"

A Thrilling Spy Drama that is even greater than "Secret Agent" and "The 39 Steps," with three grand stars.

Sylvia Sidney
Oscar Homolka
John Loder — in
"SABOTAGE"

(Both Recommended by the Censor for Adults.)

"VANISHING" AIR SQUADRONS

BRITISH AND GERMAN CAMOUFLAGE

NEW PROBLEMS
Recognition Of Hangars Is Difficult

Details now released by the Censor about the methods used by the Royal Air Force to conceal its aeroplanes and aircraft in France, together with what is known of German methods, show that a new problem will be faced by the bombing formations of both sides when the real struggle for aerial supremacy on the Western Front begins. It will be the problem of locating the objectives when attempts are made to strike at air force bases.

Service pilots with experience of the war of 1914-18 say that aerodrome camouflage has made great strides since then. Squadrons coming in to land seem from the air to disappear, as they touch down, so that it is possible, even in good weather, to fly at a moderate height over the spot where they have just previously landed without being able to see them.

Recognition Difficult.

Formerly aerodromes could be seen from a great distance because the hangars were distinctive. Now the dispersal of aeroplanes round the landing area in the open and the altering of the look of the landing area itself so that "roads" and "hedges" appear to run across it, makes recognition difficult even in peace conditions. Yet bomber pilots on both sides will almost certainly be ordered to attack these bases directly the war in the air develops.

German Methods Differ.

German camouflage methods differ from British in some respects, notably in the colouring used for the aircraft themselves. The "shadow shading" used on British machines, in which the upper surfaces of wings, fuselage, and tail planes are covered with irregular patches of

Municipal

FINE COMEDY AND A GRIPPING DRAMA

"The Man In The Mirror" And "Sabotage"

Full of rich comedy and sparkling dialogue, "The Man in the Mirror," which is the first feature now at the Municipal Theatre, Hastings, has Edward Everett Horton in the leading role. Horton gives one of the finest performances of his long and varied career in this latest piece of delicious fooling. It is the story of Jeremy Dilke and his unhappy, hen-pecked adventures, which would be all too familiar with weren't for the astonishing diversion made by the appearance of his own reflection, who steps from a mirror to assume command of his affairs.

The results are hilarious. Smart dialogue carries the fast-moving scenes to an unbelievably rapid tempo of entertainment. Supporting Horton in the cast are Genevieve Tobin, Alistair Sim, Ursula Jeans and many other well-known players.

"Sabotage," the second attraction is an excellent thriller featuring a grand cast of players in Sylvia Sidney, John Loder and Oscar Homolka. Full of thrilling suspense and rich human drama it deals with modern "Sabotage" in the army and navy. Adapted from the novel "The Secret Agent," by Joseph Conrad, it will hold the audience in suspense right to the thrilling climax.

Carefully built with a big studio's resources, "Sabotage" is a more than usually tense thriller. The suspense of certain scenes cannot be forgotten, nor can the acting of the principals who, each and all, are at their very best. Produced with the skillful technique of American studios and equipped with all the qualities of first-class entertainment, "Sabotage" is gripping fare.

dark and light colour, is not favoured by the Germans. They employ lower tone contrasts and a less coarse surface finish. A smooth finish adds less drag and therefore detracts less from the speed of the machines. With speeds around 350 miles an hour surface finish is important, and a rough surface may reduce speed five or 10 miles an hour compared with a polished one. But an ideal polished surface is not obtainable on active service, and the British content is that the shadow shading is better camouflage, and that its adverse effect on performance is so small as to be negligible.

NAPIER THEATRES

DECEMBER IS "STATE" MONTH.

STATE

Hearing Aids Available
Air-Conditioned

TO-NIGHT — At 8.0 —
TO-NIGHT — At 8.0 —

Matinee Wednesday at 2.15 p.m.

Three Days Only!

Kentucky
★ IN TECHNICOLOR! ★
A Great Tradition Captured in a Greater Picture!!

LORETTA YOUNG-GREENE with RICHARD WALTER BRENNAN
A Gay and Glamorous Feast of Mirth and Music!

MELODY AND ROMANCE
Featuring
Alastair SIM, Margaret LOCKWOOD, Hughie GREEN
(Both Approved for Universal Exhibition.)

Regent

DEAF AIDS AVAILABLE PLANS AT LOCKYER'S, PHONE 3029

FINALLY TO-NIGHT at 8.0 —
CHARLES BOYER — IRENE DUNNE

"WHEN TO-MORROW COMES"
(Recommended by the Censor for Adults.)

MATINEE TO-MORROW at 2 p.m.

MELVYN DOUGLAS ROBERT PAIGE
VIRGINIA BRUCE JACQUELINE WELLS

"THERE'S THAT WOMAN AGAIN" **"HIGHWAY PATROL"**

That scrappy-go-lucky couple are back again, surrounded with murders and mirth. (Both Recommended by the Censor for Adults.)

Also—COLOURED CARTOON — MUSICAL, ETC.

MAYFAIR THEATRE

ALL STALLS 9d — ALL CIRCLE 1/6 —

GUEST NIGHT — At Our Popular Prices — GUEST NIGHT

2 p.m. — SESSIONS DAILY — 8 p.m.

A grand human drama that will bite deep into your heart. Great as a novel—even greater on the screen. Albert Payson Terhune's thrilling story of animal courage and devotion.

"THE MIGHTY TREVE"
NOAH BEERY JR. - BARBARA READ - ALMA KRUGER
(Approved for Universal Exhibition.)

Thrilling in its suspense — rich in its drama — who is this master criminal? — A grand mystery thriller.

"NIGHT KEY"
With BORIS KARLOFF
JEAN ROGERS - WARREN HULL
(Recommended by the Censor for Adults.)

Also — Chapter Seven of "SCOUTS TO THE RESCUE"

One Month Up In The Air

ENDURANCE FLIGHT
American Pilots Return To Earth
RECORDS BROKEN

Clyde Schlieper and Wes Carroll, the only men ever to live for a month in the sky, were the toast of the town at Long Beach, California. When they returned to Mother Earth recently after 30 days and six hours aloft. Their record of 726 hours far eclipsed the former standard of 653 hours 33 minutes, established by Fred and Al Key near Meridian, Miss., in 1935.

The pair slept in beds for the first time since 55,500 miles. Naps in the plane were taken in two-hour stretches. The cabin gave them room enough to lie down, but not to roll over.

"Return to Life"
"You don't know how good it is to live like a human being again," grinned Mr Carroll.

Mrs Schlieper, whose cooking kept the men's morale high during the gruelling flight, was all smiles, too. The wives of the two men were the first to greet them when they landed.

The landing itself was a pretty thing, the plane zipping down on to the water of marine stadium as though it had taken off but an hour before.

Most of the flight was over Rosamond Dry Lake, 60 miles north of Long Beach, but the last several hours were over the stadium as part of a civic air show.

Supplies From Boat
Just to show they really didn't have to refuel over dry land, the fliers twice took aboard gasoline cans from a speeding motor-boat.

The plane itself, an 1800-dollar four-horse-power Piper "Cub," appeared as study as ever.

"We could have kept going for two weeks longer if we wanted to," said Mr Schlieper.

"Naturally, we hope to profit from endorsements and such, but our real purpose—to demonstrate the dependability of modern aeroplanes—has been fulfilled."

Regent

MARRIAGE VERSUS CAREERS

In "The Ice Follies Of 1939."

The problem of careers versus marriage find an answer against the glamour of a backstage romance of Hollywood in "The Ice Follies of 1939," starring Joan Crawford with James Stewart, Lew Ayres, Lewis Stone and the famous "International Ice Follies" troupe. The new picture is now at the Regent Theatre, Hastings.

Portraying a singing role for the first time since embarking on a musical career, Miss Crawford, seen as Mary McKay, a singing skater who marries James Stewart only to find that she cannot acknowledge the union due to a "no marriage" clause in a motion picture contract signed in an effort to keep the tears of Stewart, Lew Ayres and herself from starving.

The couple separate when Stewart realises that he is proving a hindrance to her career. She soars rapidly to stardom and Stewart, reunited with Ayres, works on tangible plans for the staging of a spectacle on ice to be known as the "Ice Follies."

In addition to the popular stars of the original "International Ice Follies," headed by Bess Ehrhardt and Roy Shipstad, Eddie Shipstad and Oscar Johnson.

USED CARS

TRAILERS! TRAILERS! TRAILERS!

A USED ENGLISH BUILT TRAILER. Very light, automatic brake, weather proof. This trailer was bought at the Olympia Motor Show and has done very little work. £100

A NEW PHANTOM 12. Moore-Schult Coach, sleeps four adults; built in cooking and water, electric light, beautiful upholstery, light, fly and weather-proof; safe. £201

SEE THE CENTENAL EXHIBITION IN COMFORT WITH A MOORE-SCHULT COACH!

THE TOURIST MOTOR CO., LTD.
HASTINGS NAPIER
And T. NEWMAN

USED CAR BARGAINS!
BE EARLY!

CHRYSLER "4" (1928). Price £110 £20 Deposit, 30 payments £3/10/-

ROVER "10" (1931). Price £110 £20 Deposit, 30 payments £3/10/-

STUDEBAKER Sedan. Price £60 £10 Deposit, 18 payments £3/10/-

BUICK Light "6." Price £65 £10 Deposit, 18 payments £3/10/-

CITROEN MOTORS
Dickens Street NAPIER (Phone 225) Nelson Street HASTINGS

PERSONAL SERVICE!

Keep your car on the road economically with the aid of our

PERSONAL PROMPT GUARANTEED SERVICE!

Our business was "Built on Service" and to-day we offer you the keen attention to every detail that — — —

MUST SATISFY YOU!

THOMPSON MOTORS LIMITED
Karamu Rd. Hastings — Phone 3623 —
FOR DODGE & STANDARD CARS
FOR BETTER, CHEAPER USED CARS

GOOD SPORT!
Enjoy Your SKATING with WINCHESTER DOUBLE BALL-BEARING SKATES.
Sizes: Girls', Boys', Gents'.
Prices: £23/6 and £25/6.
INSPECTION INVITED.
HENRY WILLIAMS & SONS, LTD.
NAPIER
ACETONE & ELECTRIC WELDING
Repairs to Farm Machinery.
Tow Bars for Caravans.
Draw Bars for Ploughs
All Work Guaranteed. Consult—
DOBSON & McAUSLIN, LTD.
29 DICKENS ST., NAPIER.
PHONE 59.
(Next Stewart Greer Motors).

EXTRA QUALITY IN TIMBER . . .

... means many years of extra life for your home. You'll get only EXTRA quality from . . .

McLEOD & GARDNER LTD.
Sawmillers, Timber Merchants • HASTINGS

Easy, Happy Picnics By Rail
Firms, Societies, Schools, Etc.

Expert Advice Free!

High summer brings the low-cost picnics by rail in all directions.

Free booklets give helpful information about suitable picnic grounds and their equipment, details of fares, etc.

Take advantage of the free advice of railway experts in planning picnics.

Ask To-day For a Booklet

MAKE HARVEY'S
YOUR SHOPPING CENTRE THIS XMAS!

Our large and attractive display of

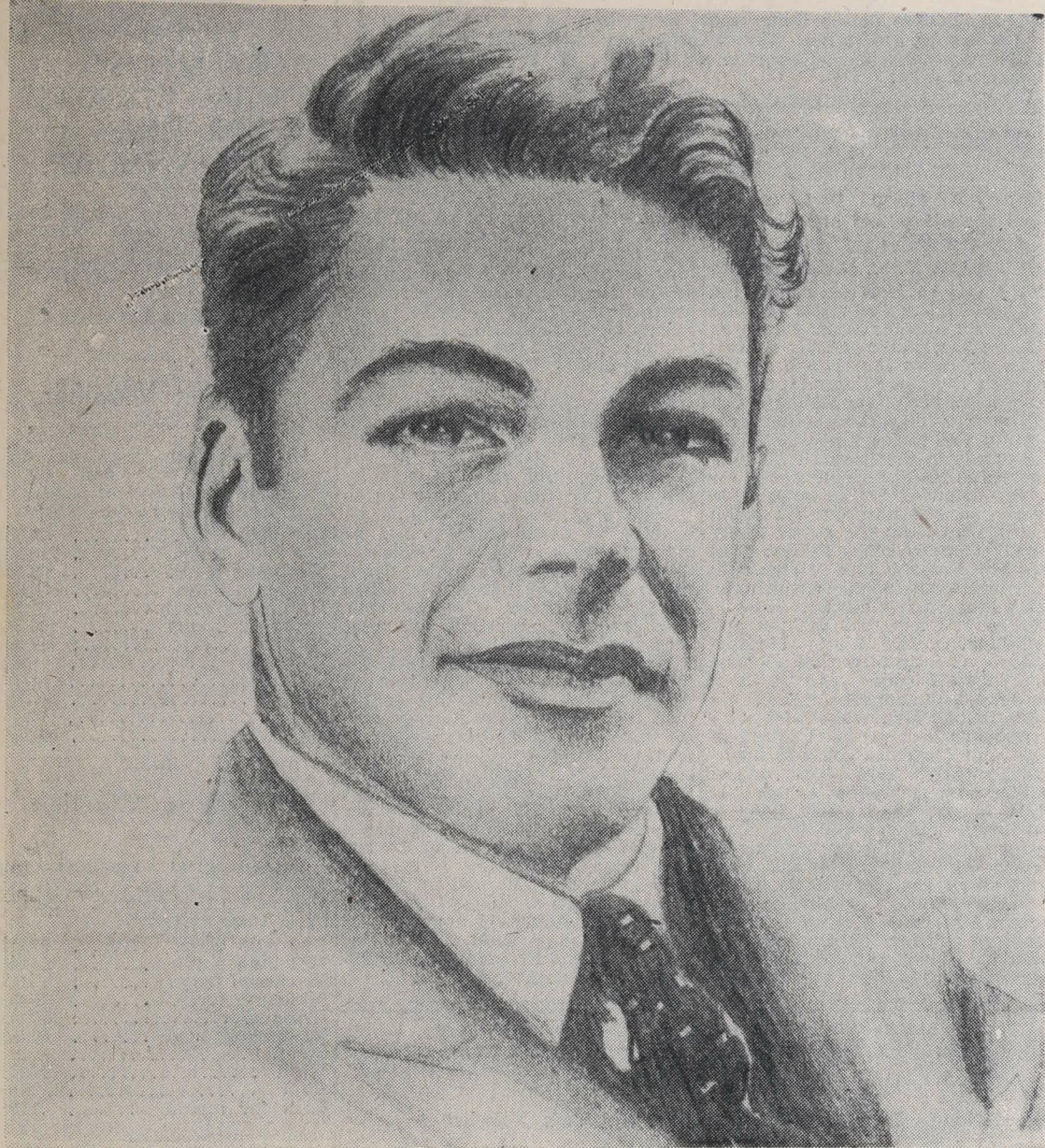
Crockery, Crystal
and
Fancy Goods

make easy buying.

Our Keen Prices Still Prevail!

HARVEY'S
Russell Street - HASTINGS - Phone 2663

PENCIL PORTRAITS BY A PROMISING YOUNG HASTINGS ARTIST



Paul Muni.



Douglas Fairbanks, Jun.



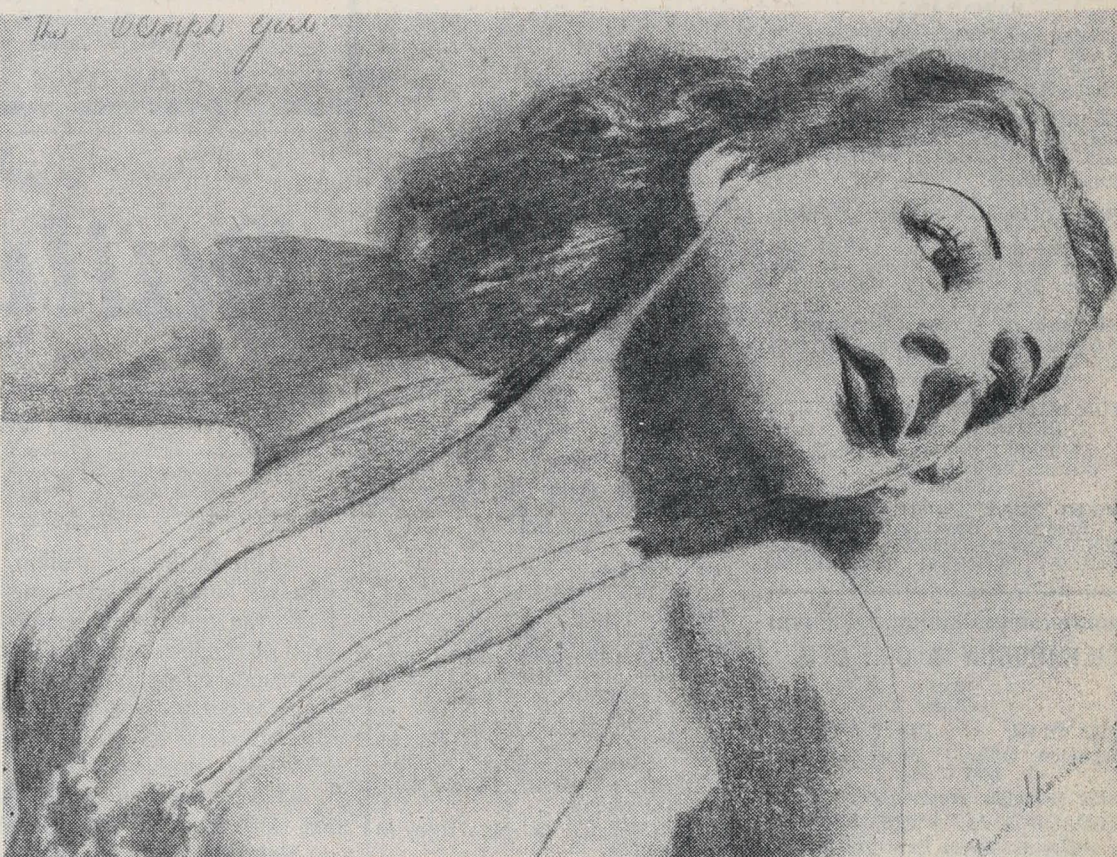
Alice Faye.



Shirley Temple.



Richard Greene.



Ann Sheridan.

STRIKING PENCIL DRAWINGS BY A YOUNG HASTINGS ARTIST.—The pencil sketches here reproduced were the work of a 15-year old Hastings girl, Joyce McKee, whose father is well-known as a member of the Hastings Borough Council. There is something much more than ordinary talent here, and it will be with the greatest interest that the future of this promising young artist will be followed by all who take an interest in such subjects.

HASTINGS GIRL SHOWS RARE ARTISTIC ABILITY

Brilliant Portrait Work By Miss Joyce McKee: Entirely Self-Taught

There is a highly successful future in promise in the world of art for a young Hastings girl. She is Miss Joyce McKee, who at the age of 15 years is showing remarkable ability with pencil, crayons, and paint brush. Above are pictured six samples of her portraiture, which display professional standard.

In this particular line of work Miss McKee reveals herself as more than a brilliant copyist. She does not merely reproduce her subjects in pencil from photographs, but endeavours with a remarkable degree of success to convey something of the character of her study. Each portrait is delicately and forcefully executed with a fine sense of light and shade.

The usual stumbling-blocks to juvenile artists in portrait sketches are the eyes, nose, and moulding of the cheek-bones; but these appear to have presented no difficulties to Miss McKee. As far as technique is concerned, she is more than adequately equipped, and it is to be hoped that this will become the vehicle for individual and original work.

At present Miss McKee's work tends naturally and wisely to be representative. She would appear to be discovering the method of achieving her effects before considering the avenue of expression along which to pursue her work. The daughter of Mr S. J. McKee, a member of the Hastings Borough Council, Joyce was born in Hastings and was a pupil at the West School. At the age of 10 years she showed distinct promise in artistic studies, and in the three years following she won numerous prizes at the Hawera, Manawatu and Hawke's Bay agricultural shows.

Her grandfather, the late Mr W. J. McKee, M.A., was a brilliant scholar and endowed with similar artistic tastes. He arrived in New Zealand in 1860 and spent most of his time on work of a like nature. Such ability in a girl so young should not go unnoticed or neglected, and every endeavour should be made to see that the necessary opportunities are made available for her to pursue her study.

The time has now been reached when Miss McKee will have to consider problems beyond the purely technical. The materials of her craft are more than sufficient to meet the demands which at present she is making upon them. The question now will be for her to give thought to new demands. She will

MEEANEE CENTENNIAL HALL

Raising Finance
POOR SUPPORT OF DISTRICT
Committee Meets

The effects of the outbreak of war on the funds of the Meeanee Centennial Hall committee are spoken of in the annual report presented at the annual meeting by the chairman (Mr J. Meikle). He expressed the hope that in the ensuing year the committee would be accorded better support and co-operation by residents of the district. The balance sheet revealed the assets to be £118 11/5 cash, £100 valuation of the section, and £40 12/6 the piano and crockery.

"The subscription lists did not receive good support, but I thank all who assisted in that direction," stated Mr Meikle. "I hope that those who did not help will do so when the lists are out again."

Mr Meikle expressed appreciation of Mr J. Dooney's action in donating the section for the hall, and also for the use of his loft for dances. Thanks are expressed to Mesdames Hale and Binlier, to the women who assisted with the dances, the Meeanee Young Farmers' Club, and to Mr Sweetapple.

The election of officers resulted: Chairman, Mr J. Dooney; secretary, Mr L. L. Griffiths; treasurer, Mr W. J. McGrath; committee Mesdames L. Griffiths, W. King, Messrs. Dooney and J. Meikle.

have to study deeply the nature of her art and the fundamentals of aesthetics. Care should be given to ensure that the development of her attitude of mind and imagination is complementary to that of her pencil craft. This will be helped and inspired only by expert guidance, and it will be unfortunate if this girl's gifts are not given the best assistance and finest encouragement possible.

Tennis Players At Waipawa

WEST END'S VISIT
Bowling Greens Also Filled
RINK GAMES

"Daily Mail" Special Service.

W. Collett beat Yates, 6-3, 6-3; G. Knobloch lost to D. Craigie, 1-6, 0-6; B. Davis lost to Heiford, 3-6, 0-6; Maitland lost to Oliver, 6-4, 3-6, 3-6; Gould lost to House, 6-4, 2-6, 3-6; J. Cable and M. Collett beat Brough and Plows, 6-4, 6-4; M. Collett beat Sorrell, 6-2, 6-2; McKay beat Brough, 6-5, 6-3; D. Cable beat Donnelly, 6-1, 6-5.

Singles
Watts lost to Forbes, 3-6, 4-6; J. Knobloch lost to Watson, 4-6, 3-6; W. Collett beat Yates, 6-3, 6-3; G. Knobloch lost to D. Craigie, 1-6, 0-6; B. Davis lost to Heiford, 3-6, 0-6; Maitland lost to Oliver, 6-4, 3-6, 3-6; Gould lost to House, 6-4, 2-6, 3-6; J. Cable beat Plows, 6-4, 6-4; M. Collett beat Sorrell, 6-2, 6-2; McKay beat Brough, 6-5, 6-3; D. Cable beat Donnelly, 6-1, 6-5.

Bowling Greens
The bowling green was filled to capacity practically all day, several rink games being played, but the majority of members engaged in getting off their competition games. Following are the results:—

Newson Cup
Young beat Kingston, 18-15; Angus beat McDonnell, 20-13; Carter beat Limbrick, 11-10; Limbrick beat Barrie, 26-16.

Senior Championship
Fleet beat Dunkin, 16-15; Ireland

PERSONAL

ORMONVILLE

Mr. and Mrs. L. West, who have taken over Mr. F. Hansen's farm at Matamau, returned home from their wedding trip last week.

Mr. and Mrs. E. A. King have returned from a week's visit to Wellington.

Miss Truda King is visiting her aunt, Mrs. G. Herbert, Herbertville.

Miss Ethel Marshall returned last week to Lower Hutt after spending a holiday here with her aunt, Mrs. Barnes.

Miss R. Bonner, Napier, is spending a few days with Mr. and Mrs. A. H. Port and family.

Mr A. Dewar Brown, Christchurch, who recently returned from a successful tennis tour in England, is staying in Te Uri as the guest of his uncle and aunt, Mr. and Mrs. A. Whitson.

TAKAPAU

Mr. and Mrs. P. J. May are visiting Wellington.

Mr. and Mrs. R. H. Walters have returned to Takapau after a visit to Auckland.

Mr. T. Taylor, Takapau, was elected a member of the Board of Benevolence at the recent communication of the Masonic Grand Lodge at Auckland.

Pupils of Mr A. Perry ("Uncle Pop") are to present a musical evening in the Trinity Hall, Clive Square, Napier, on December 16 at 8 p.m. Admission is by ticket, which may be obtained at Messrs Harston's Music Warehouse or at the studio, 61 Milton Road.

beat Kenny, 21-18; Jopson beat McIntosh, 21-13; Fleet beat Russell.

Handicap Pairs
Kenny and Noel beat McIntosh and Davy, 12-6; Limbrick and Patterson beat Edwards and Dunkin, 24-19; Harker and Fleet beat Carter and Payne.

CENTENNIAL WEEK IN WAIPAWA

Provisional Programme
PUBLIC WILL BE CONSULTED

"Daily Mail" Special Service.

WAIPAWA

A tentative programme covering proposed celebrations in Waipawa during the New Zealand Centennial week, from Sunday, February 11, to Sunday, February 18, was prepared at a meeting of the Waipawa Centennial Committee. The programme will be reviewed at a meeting of the committee on Wednesday evening and will then be submitted for consideration and approval at a public meeting to be held on Thursday night.

The suggested programme is as follows: Sunday 11, Church parade; Monday 12, gala evening in High Street; Tuesday, athletic meeting, Coronation Park; Wednesday, picture entertainment; Thursday, Waipawa Centennial Carnival Ball; Friday, pictures; Saturday, procession in the afternoon; picture entertainment in evening.

Opportunity will also be taken at Thursday's public meeting to elect a Patriotic Committee in Waipawa.

WAIPAWA BOWLERS SELECTED

"Daily Mail" Special Service.

WAIPAWA

The following members of the Waipawa Bowling Club have been selected to play in the third round of the Hawke's Bay Bowling Centre's Shield competition next Saturday:—

Away.—Bluff Hill: J. Clark, H. Carter, V. Fleet, F. Holt, Waipukurau: H. Hawke, J. Barrie, E. Dunkin, C. Critchley.

At Home.—Waipukurau: Limbrick, Larsen, Russell, Jopson, Waipukurau: Ron. Petherick, Nissen, August, Patterson. Bluff Hill: Ireland, King, McIntosh, Eagle.

Any of the above players not available are requested to notify the selector before Wednesday. Travelling teams to meet at the pavilion Bluff Hill, 12.45 p.m., Waipukurau 1.30 p.m.

FATHER XMAS ARRIVES!



Hello kiddies . . . Father Xmas arrives daily at 2.30 p.m. Don't fail to meet him in his thrilling Wonderland Cave. See "Hey Diddle," "Old Mother Hubbard," "Old King Cole" in beautiful setting with delightful music. Admission only 6d with big free gift from Father Xmas!

★ A FEW GIFT SUGGESTIONS

- | | |
|---|---|
| FABRIC GLOVES.
Long style. Shades, Black, Navy, Chamouis and White.
Price 7/6 pr. | CENTENNIAL SOUVENIRS.
Serviettes Rings . . . 2/11
Spoons 2/6
Caddy Spoons . . . 2/-
Paper Knives . . . 2/3
Throwovers, N.Z. designs. Pink, Sky, Green and Maize . . 3/11 each |
| HAND BAGS.
Newest styles in Suede, Shades, Black, Navy, Bottle, Blue, Cyclamen, Tan, Teal, Brown. Prices 22/6 to 25/6 each. | SUN GLASSES.
With coloured frames. 1/6 pr. |
| NEW KAF-RED BAGS.
Smart American styles. Shades, Tan, Black, Navy, Bottle and Earth. Prices 16/6 and 21/- each. | CALENDARS.
For friends abroad. Showing N.Z. Exhibition 1/6 ea. |
| | CALENDARS.
Scenes. Price 6d, 1/-, 1/6 and 2/6 ea. |

WESTERMAN'S

HASTINGS :: THE STORE WITH THE XMAS SPIRIT



VITAL NEED OF SUPPORT FOR HASTINGS AMATEUR ATHLETES IS EMPHASISED POLICY FOR NEW SEASON PLANNED AT ANNUAL MEETING HELD LAST NIGHT

The vital necessity for increased revenue and a greater patronage from the public of the district if Hastings athletes were to put forward an attractive programme for the forthcoming season, were emphasised by the chairman of the Hastings Amateur Athletic and Cycling Club (Mr J. C. Taylor) during a discussion upon the club's policy for the season, at its annual general meeting in the Chamber of Commerce rooms, Hastings, last night.

"K" ENGINE IN HAWKE'S BAY A STEP IN RAIL TRANSPORT TRIAL OUTING Advantage Of Greater Power Reserve

A step in the development of rail transport in Hawke's Bay was made yesterday when a locomotive of the "K" class drew the 2.45 p.m. goods train from Palmerston North to Napier. The engine returned to Palmerston North last night with the 6.33 goods.

INTER-SCHOOL CRICKET HEREWORTH DEFEATS VISITING SIDE EXCITING MATCH Game With St. George's Of Wanganui

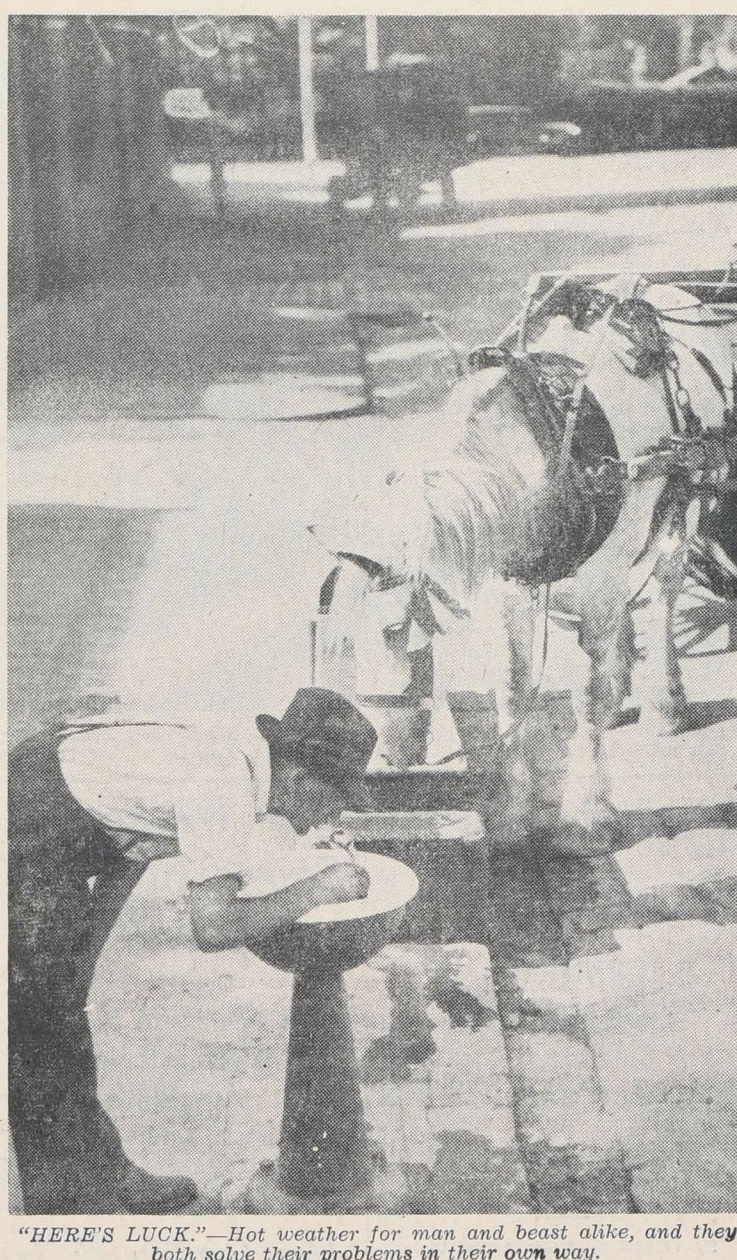
The annual cricket match between the First Elevens of Hereworth School, Havelock North, and St. George's School, Wanganui, was played at Hereworth on Saturday, the home team registering a win on the first innings.

CRICKET CONTROL BODY ASSOCIATION MEETS AT NAPIER NEW GROUNDS

A decision to suspend play on the grounds of the Napier Boys' High School, and to use two wickets on McLean Park, was made at a meeting of the Hawke's Bay Cricket Association Executive last night.

Napier Swimming Club OPENING OF SEASON Handicaps For To-night VARIED PROGRAMME

The Napier Swimming Club will open its new season at the Napier Municipal Baths to-night and the following handicaps have been declared:



PRASE FOR MR SCRIMGEOUR "VALUABLE" SUNDAY BROADCASTS LABOUR PARTY Assurances To Prime Minister

At the fortnightly meeting of the Hastings branch of the New Zealand Labour Party, the following resolutions were carried unanimously:

Table with columns: Name, Points, Summary of scores for the Hereworth vs St. George's cricket match. Includes sections for First Innings, Second Innings, and Bowling figures.

HEREWORTH DEFEATS VISITING SIDE EXCITING MATCH Game With St. George's Of Wanganui

INTER-SCHOOL CRICKET HEREWORTH DEFEATS VISITING SIDE EXCITING MATCH Game With St. George's Of Wanganui

THE DAILY MAIL Personality Portraits MR TOM PARKER

From his beautiful home in Corry Avenue, overlooking Napier, Mr. Tom Parker, or, as he is widely known, Mr. Tom Parker, can look down on a town that he has watched steadily developing for 45 years.

TE MATA PARK TRUST Resignation Of Mr Mason Chambers BOARD'S MEETING

WIN FOR NAPIER GAS

Friendly Game At Week-end

WORTHY CAUSE Call Made By Patriotic Committee

Early Days Of Hawke's Bay CAMPAIGN FOR FUNDS

THE GLASGOW WHARF HAS AN INTERESTING STORY Original Opening Date Revealed By Deciphering An Old Iron Plate

Several enquiries have been received in the past week concerning the original opening of the Glasgow Wharf at Napier. Investigation has revealed interesting facts which throw light on the situation.

Twelve Years As Chairman TE MATA PARK TRUST Resignation Of Mr Mason Chambers BOARD'S MEETING

New Cricket Team HASTINGS R.A.O.B.

Defence Club's Third Series J. HAWKINS' SUCCESS

Rifle Shooting At Napier POOR CONDITIONS

Challenge For The Christie Cup Hawkes Bay Team To Meet Wairarapa

On Thursday the committee of the Hawke's Bay Lawn Tennis Association will consider the dates on which a challenge match for the Christie Cup shall be played.

Early Days Of Hawke's Bay CAMPAIGN FOR FUNDS APPEAL BY MAYOR OF HASTINGS WORTHY CAUSE Call Made By Patriotic Committee

MAN SEVERELY BURNED CONTACT WITH LIVE POWER LINES LUCKY ESCAPE

Severe burns about the lower part of the body and shock were received by Mr Schofield, of Norton Road, Hastings, shortly before 10 o'clock on Saturday morning, when he came into contact with a live electric power line at his home.

Severe burns about the lower part of the body and shock were received by Mr Schofield, of Norton Road, Hastings, shortly before 10 o'clock on Saturday morning, when he came into contact with a live electric power line at his home.

Severe burns about the lower part of the body and shock were received by Mr Schofield, of Norton Road, Hastings, shortly before 10 o'clock on Saturday morning, when he came into contact with a live electric power line at his home.

Severe burns about the lower part of the body and shock were received by Mr Schofield, of Norton Road, Hastings, shortly before 10 o'clock on Saturday morning, when he came into contact with a live electric power line at his home.

Severe burns about the lower part of the body and shock were received by Mr Schofield, of Norton Road, Hastings, shortly before 10 o'clock on Saturday morning, when he came into contact with a live electric power line at his home.

On Thursday the committee of the Hawke's Bay Lawn Tennis Association will consider the dates on which a challenge match for the Christie Cup shall be played.

Early Days Of Hawke's Bay CAMPAIGN FOR FUNDS APPEAL BY MAYOR OF HASTINGS WORTHY CAUSE Call Made By Patriotic Committee

"On many occasions during my years of public life it has been my lot to appeal to the people of the Hastings district for financial assistance in many worthy causes.

"I menthon the men who have already enlisted in the various branches of His Majesty's forces, and who will shortly be leaving our shores for service overseas.

"I menthon the men who have already enlisted in the various branches of His Majesty's forces, and who will shortly be leaving our shores for service overseas.

"I menthon the men who have already enlisted in the various branches of His Majesty's forces, and who will shortly be leaving our shores for service overseas.

"I menthon the men who have already enlisted in the various branches of His Majesty's forces, and who will shortly be leaving our shores for service overseas.

"I menthon the men who have already enlisted in the various branches of His Majesty's forces, and who will shortly be leaving our shores for service overseas.

"I menthon the men who have already enlisted in the various branches of His Majesty's forces, and who will shortly be leaving our shores for service overseas.

MAKE A REAL JOB OF YOUR DRENCHING THIS SEASON!



Leading Veterinary and Live Stock experts are unanimous that graziers frequently spend much money in the use of wrong Drenches. Recommendations are for sheepfarmers to confine their purchases to Drenches composed of: (a) Tetrachlorethylene; (b) Carbon Tetrachloride; (c) Nicotine and Bluestone. We specialise in the manufacture of these Drenches. Here they are:

- GIESENS SHEEP DRENCH (Tetrachlorethylene), for eradicating Stomach and Bloodsucking Worms in Sheep. Price per Gallon, 21/6. Enough for 450 sheep or 900 lambs.
KARTET SHEEP DRENCH (Double Strength), Carbon Tetrachloride. One gallon doses 1500 lambs or 900 sheep. Price per Gallon, 21/6. Half Gallon, 12/6.
SUTTONS The original Nicotine Bluestone Drench, as recommended by New Zealand Department of Agriculture. Price for 16 oz. Bottle, With Doser Free. One Bottle makes 2 Gallons of Drench. 7/6

SAYERS DRENCHING EQUIPMENT

BLOWFLY PROBLEM SOLVED FOR GRAZIERS WITH FLYODINE. An entirely new principle of destruction. Price: 12/6 per gallon.

HAWKE'S BAY FARMERS' ASSOCIATION, LTD. Agents for Hawke's Bay. Branches at Waipukurau, Takapau, Dannevirke and Waioa.

P. GIBSON & SONS. OUR PHONE No. 15 3980. Smooth Tyres are DANGEROUS! WE STOCK ALL MAKES AND SIZES. SEE US FIRST!

HAWKE'S BAY JOCKEY CLUB (INC.) SUMMER MEETING

FIRST DAY, SATURDAY, DECEMBER 30, 1939. SECOND DAY, MONDAY, JANUARY 1, 1940.

- OFFICIALS.—President: G. D. Beaton. Handicapper: H. Coyle. Starter: W. Price. Judge: M. B. Bergin. Secretary: A. E. Wishart. Telephone 2447. P.O. Box 13, Hastings.
FIRST DAY SATURDAY, DECEMBER 30, 1939. To start at 12.30 p.m.
1.—HASTINGS MAIDEN, of £100, 2nd £15, 3rd £5. Weight, 8st. 7lb. For horses that have never won a Flat Race at time of starting. Nom. £1, Acc. £1. 13 FURLONGS.
2.—OTATARA HIGHWEIGHT HANDICAP, of £100, 2nd £15, 3rd £5. For horses that at the time of entry have started three times in a steppechase or hurdle race and for horses eligible to run in Hack Flat races. Only registered Steppechase or Hurdle Race Jockeys, approved by the Stewards, shall be eligible to ride. Min. weight, 9st. Nom. £1, Acc. £1. 13 MILES.

ROUND UP has been off the scene for a little while, but he proved himself the best handicap horse in the Auckland district last season. Early in the season he won the King George Handicap at Avondale and the St. Andrew's Handicap at Ellerslie, the latter event with 9.1. With 8.8 he chased home the lightly-weighted Cheval De Volee in the Auckland Cup and won the twelve furlong A.R.C. Handicap with 9.3. The latter race by a margin of two and a half lengths.

ACCEPTANCES FOR WOODVILLE. HAWKE'S BAY horses comprise a large percentage of the entrants for the Woodville Jockey Club's summer meeting at Woodville on Saturday and Monday and the following acceptances are given a final reminder that acceptances for all first day's events close with the secretary, Mr W. A. Lyon, Woodville, at 8 o'clock to-night (Tuesday).

AUCKLAND CUP FIELD IS VERY OPEN Class Strongest In Years PLENTY OF SCOPE FOR THE PUNTERS

Beaupartir Will Be Found Fit (By MOTUROA.)

The £3000 Auckland Cup, to be decided in three weeks' time, is now a matter that deeply concerns punters throughout the country, and the elucidating of the difficult problem presented will provide a host of headaches. The Auckland Cup field of 1939 is the most open field in a decade.

It is a pity that the sale of the New Zealand Cup winner, Yours Truly, has now been completed and that the Siegfried horse is to leave for Australia almost immediately, but the field is still an outstanding one and one that offers a very wide range for early speculators. From Round Up down to The Cardinal there is scarcely a candidate that does not claim a measure of support.

Taken all round, the class of horses engaged in the Auckland Cup is definitely stronger than has been the case for some years and, though the Melbourne Cup winners, Catalogue and Wotan, are the only proven two-milers in the field apart from last year's lucky winner, Cheval de Volee, there are a host of young horses whose form to date has been suggestive of stamina. Indeed, indications are that the Auckland Cup will be run at a very fast but this year, if the going is good, and those conditions will play into the hands of the stayers.

LESSER LIGHTS. THERMIDOR has been racing fairly well in the South Island, but he should be held safe by Balinavar. However, both will find it hard to concede weight to Dictate, who ran third in this race with a pound more last year and who finished well for third in the recent N.Z. Cup. Dictate is at least consistent, but he seems to be just good enough to fill minor placings.

BEAULIVRE, the brilliant Hastings colt who has been unbeaten this season in eight starts, is likely to meet with plenty of opposition in the Great Northern Derby on New Year's Day. There are 30 left in the field after the first forfeits, and though these will fine down a lot, Beau, Sly, Moorsoot, Baran and Fils de Vaals are among the well-bred colts likely to test the Beau Pere-Passbook colt in a race that should be more exacting than the N.Z. Derby.

BEAUPARTIR LLANGOLLEN GOLDEN SHEILA. Brunhild has never been better than at present, but it seems to press as being above the ordinary. One big thing in her favour is her ability to begin well. Play On had everything in his favour on Saturday at Feilding, but he stopped badly when Siegmund put in his challenge. The Philomel gelding is no champion and will need careful placing.

BRED TO STAY. FLOODTIDE is bred to stay and he has been brought along quietly this season in view of his Auckland Cup engagement. He comes in nicely with 8.3 and appeals as a much better proposition than King Roy, whose winter preparation was turned to jumping.

WOODVILLE RACES. SATURDAY AND MONDAY December 9 and December 11, 1939. ACCEPTANCES for all first day's events close at 8 p.m. TO-NIGHT (Tuesday), 5th Instant.

For GREATER ECONOMY, ROOMINESS, COMFORT and VALUE... change NOW to a HILLMAN Minx 10 H.P. 4-DOOR SALOONS £288. J. E. PEACH & CO., LTD. RETAIL DISTRIBUTORS NAPIER - HASTINGS - WAIROA - WAIPUKURAU

WOODVILLE WEIGHTS DECLARED. Siegmund Tops Bolton Handicap. The handicapper (Mr. H. Coyle) has declared the following weights for the first day of the Woodville District Jockey Club's summer meeting on Saturday and Monday, December 9 and 11:—

Table of horse weights for Siegmund Tops Bolton Handicap and other races, including names like Kalkwas, Foesicker, Alrehot, Contact, Primak, Hethers, All Blood, Maiden Stakes, etc.

MATTRESSES — for — SHEARERS. Two feet six inches wide. Stuffed with Cotton Flock. These easily outlast the flax ones and the price is only— 12/6 EACH. HAWKE'S BAY FARMERS' ASSOCIATION, LTD.

MR FARMER! For Your... SHEEP DIP GRASS SEED SUPERPHOSPHATE FOR TOP-DRESSING. Consult de PELICHET, McLEOD & Co. Ltd. HASTINGS: HEAD OFFICE.

CONCRETE CATTLE TROUGHS are cleaner... more economical... last longer! AWATOTO SHINGLE CO. LTD. NAPIER: Main Highway, Awatoto. HASTINGS: Marakakaha Road. Phone 3555.

Get the world's good news daily through THE CHRISTIAN SCIENCE MONITOR. Regular reading of THE CHRISTIAN SCIENCE MONITOR is considered by many a liberal education. Its clear, unbiased news and well-rounded editorial features, including the Weekly Magazine Section, make the Monitor the ideal newspaper for the home. The prices are: 1 year \$12.00, 6 months \$6.00, 3 months \$3.00, 1 month \$1.00. Wednesday issue, including Magazine Section: 1 year \$14.00, 6 months \$7.00, 3 months \$3.50, 1 month \$1.25.

Tiderace Filly Is Promising. Talenta Is Likely To Improve. (By Moturoa.) Much interest was taken in the Bulls-trained Talenta at Feilding as she was the first of the stock of Tiderace to be raced in New Zealand. Talenta, though she looked above herself, ran a very fine race for second to Chary and she left the impression that she will be found a greatly improved filly at Christmas, when she will be seen in action at Awapuni.

Restrictions! do not prevent us supplying all kinds of... WINES SPIRITS ALES and LIQUEURS At Lowest Prices! GRAND HOTEL BOTTLE STORE 'PHONE 2131 - HASTINGS. TO TRAVEL THE NORTHERN HAWKE'S BAY DISTRICT. THE FAMOUS WELSH COB STALLION, LLOYD GEORGE (Second in Royal Show, England). Reg. No. 1621 (Imp.) 15 hands 16 in. Dam: Oakford Black Bess (No. 9022, vol. XXXI), winner of over 100 prizes, including the Royal; 14 years, at present with 10th foal at 1938. FEE: £8 8s. Carries Good remount subsidy of £4 4s/- for approved mares. A limited number of mares will be taken who are not eligible for the remount subsidy. Mares sent to Sandy Creek, Tutira, will be grazed free. All care taken, but no responsibility. D. D. STEWART, SANDY CREEK: TUTIRA, H.B.

Only Four Days To Go

OUR BLACK CAT ART UNION £5,000 ALLUVIAL GOLD. CLOSING: 9th DEC., 1939. DRAWN: 22nd DEC., 1939. DRAWN BEFORE XMAS. F. CRAY, P.O. BOX 33, NAPIER. TICKETS 2/6. TOTAL PRIZES: £5,000. ALL PRIZES PAYABLE IN ALLUVIAL GOLD.

