

Hastings Theatres

BROADWAY MELODY OF 1938. Commences NEXT SATURDAY. (Approved for Universal Exhibition). SHOWING DAILY At 2.15 & 8.0. Plans at Sutherland's after 6.15 p.m. Theatre (3845) or 6.15 p.m. Theatre (3845) after 6.15 p.m.

COSY. COMMENCING TO-NIGHT AT 8.0. Plans at Sutherland's - Ring 2322 or Theatre (3233) after 6.30 p.m. ANOTHER EVER-POPULAR METRO-GOLDWYN-MAYER DOUBLE-FEATURE PROGRAMME!

STATE. Daily at 2.15 & 8. PLANTS AT THEATRE (Phone 2674). NO. 1 A Scintillating Entertainment Full of Romance and Laughter "SHE'S GOT EVERYTHING"

MUNICIPAL PICTURES. 9d - 1/- ALL SEATS 9d - 1/- SHOWING NIGHTLY AT 8.0. No. 1 - Gallant Men, Gay Cavaliers and Heroic Women in a Drama of Courage and Excitement.

BRITAIN'S NEW BATTLESHIPS. Particulars of the five British battleships of the King George V class have just been published. The King George V and the Prince of Wales are expected to be launched this year at Walkers-on-Tyne.

Regent

WILLIAM POWELL AND MYRNA LOY. "Double Wedding" is Good Comedy. It was left for the inimitable William Powell and his charming colleague of the screen, Myrna Loy, to immortalise the trailer in celluloid.

COSY. COMMENCING TO-NIGHT AT 8.0. Plans at Sutherland's - Ring 2322 or Theatre (3233) after 6.30 p.m. ANOTHER EVER-POPULAR METRO-GOLDWYN-MAYER DOUBLE-FEATURE PROGRAMME!

STATE. Daily at 2.15 & 8. PLANTS AT THEATRE (Phone 2674). NO. 1 A Scintillating Entertainment Full of Romance and Laughter "SHE'S GOT EVERYTHING"

MUNICIPAL PICTURES. 9d - 1/- ALL SEATS 9d - 1/- SHOWING NIGHTLY AT 8.0. No. 1 - Gallant Men, Gay Cavaliers and Heroic Women in a Drama of Courage and Excitement.

Winding-up Of Company. AMALGAMATION ZONE. Shareholders' Special Meeting. "So Red the Rose" is a Poignant Film.

Napier Theatres

GAIEY DE LUXE. Thrilling Racing Story To-night. RONALD SINCLAIR. In M-G-M's Mighty Thrill "THOROUGHBREDS DON'T CRY".

MAYFAIR THEATRE. All Stalls 9d - GUEST SEASON ATTRACTIONS - All Circle 1/-. No. 1: Death-defying thrill of thrills... see the 9-G Power Dive in this thrilling air drama, dedicated to the bravest men in the world.

STATE. Exciting Adventure in Strange, Far-off Places! The Orient's ace detective ferrets out the ancient secret to the hidden tomb of Genghis Khan!

THE PLAZA. 2.15 P.M. TO-DAY 8.0 P.M. PARAMOUNT'S MIGHTY ALL-COLOUR TRIUMPH "HER JUNGLE LOVE"

Plaza. TECHNICOLOUR FILM DRAMA. "Her Jungle Love" is Fine Entertainment. Many magnificent technicolour pictures have been shown in Napier, but it is extremely doubtful whether they have matched in all-round quality and artistry Paramount's latest technicolour production, "Her Jungle Love."

Gaiety-De-Luxe

GAIEY'S EXCITING BILL. Thrilling Racing Story To-night. Ronald Sinclair, M-G-M's new find in British boy actors, who plays his first important role in "Thoroughbreds Don't Cry," screening to-night at the Gaiety Theatre.

Mayfair. ATTRACTIVE DOUBLE PROGRAMME. Thrilling Air Drama and Detective Mystery. Tuesdays, Wednesdays and Thursdays at the Mayfair Theatre, Napier, are the most exciting days of the season.

State. "MR MOTO" AGAIN ON SCREEN. Story of the Orient To-day. Commencing to-day at the State Theatre, Napier, with a matinee at 2.15, another of the famous "Mr Moto" films makes its first appearance.

USED CARS

BE EARLY AND SECURE ONE OF OUR SELECTED CLOSED CARS. AUSTIN 1935 10/4 SALOON. One owner. Small mileage. Absolutely new condition... \$225.

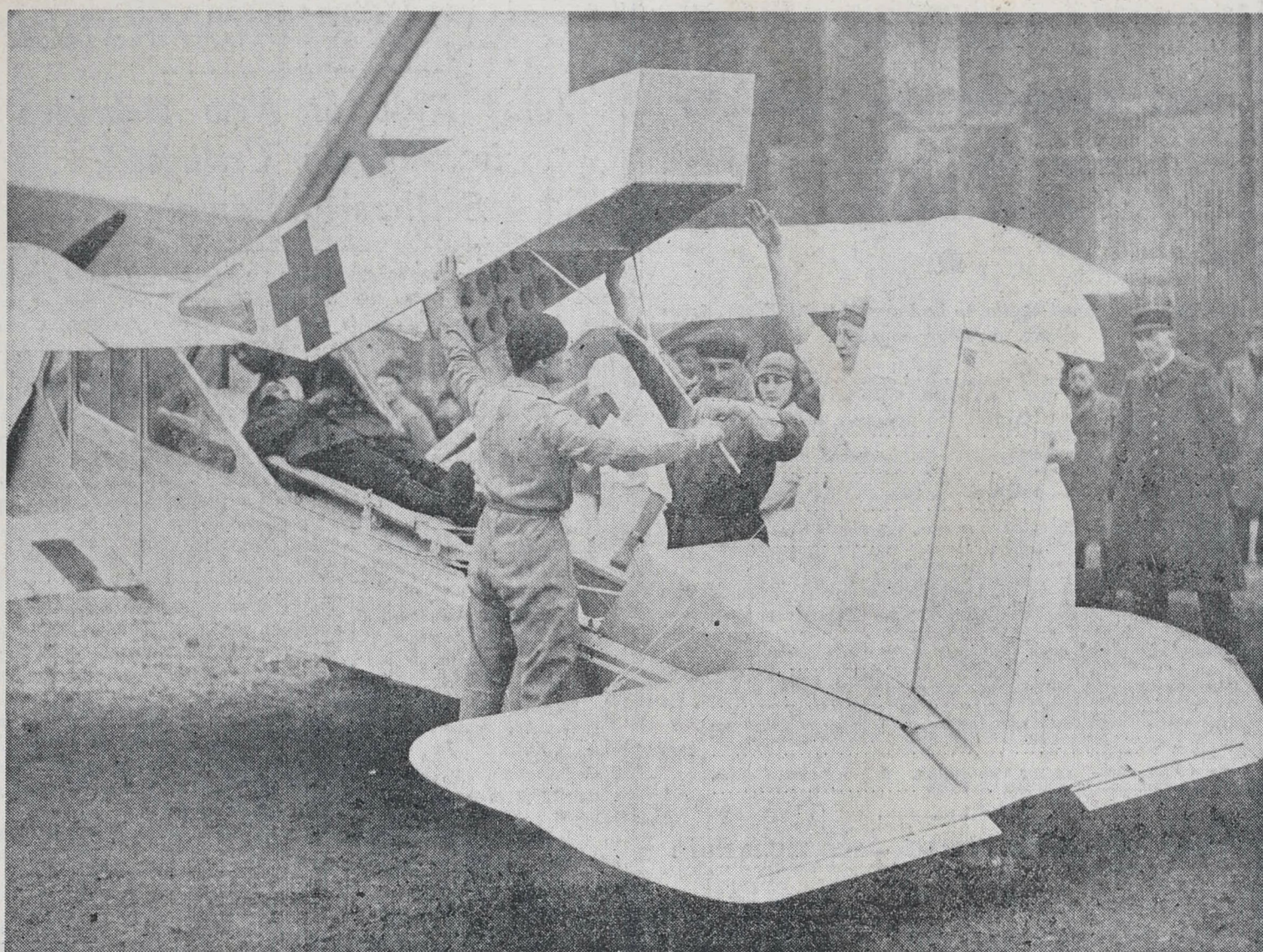
USED CAR SPECIALS. LOOK AT THESE FOR GREAT VALUE! As a Result of Big Sales We have now Acquired a Fresh Stock of Real Quality Used Cars and Trucks.

USED TOURING CARS At Attractive Prices. BUICK 4 Cyl. Tourer. Repainted. Genuine Leather upholstery. Rigid side curtains. Mechanically sound throughout. Motor overhauled.

Thompson Motors Limited. The Garage Built on Service. The twenty-fifth anniversary of the opening of the Lotschberg mountain railway was celebrated recently, when a party of journalists were the guests of the board of directors in a special train which took them from Berne to Spiez, Kandersteg, and Brig, and back.



SILVER TEMPLAR OF WARE.—A valuable cocker spaniel imported to Melbourne recently from England.



FRANCE TRAINS AIR NURSES.—In France a corps of nurses are being trained to care for serious cases in the air while they are being transported to hospital.



R.A.A.F. PARADE.—Men of the Royal Australian Air Force on parade at Melbourne.



FILM STAR WATCHES TENNIS.—Marlene Dietrich (in sun glasses) watches the French tennis championships at Paris with her daughter.



SECOND DAY AT ASCOT.—Sir John Reith (right) the new Chief of Imperial Airways.



AIR RAID PRECAUTIONS.—A "rehearsal" in air raid preparations in a London basement.

RADIO BARGAINS

DRASTIC REDUCTIONS

On All These Models Which Have Been Traded in on Our Huge Shipments of --

MULLARD RADIO

HERE'S THE LIST:

- 1 7-VALVE PHILCO MANTEL MODEL £4/-/-
- 1 8-VALVE COLONIAL MANTEL MODEL £4/-/-
- 1 5-VALVE ATWATER KENT MANTEL MODEL £7/10/-
- 1 8-VALVE MAJESTIC CABINET MODEL £4/-/-
- 1 8-VALVE ATWATER KENT CABINET £8/10/-
- 1 7-VALVE ALL-WAVE PATTERSON CABINET £19/10/-
- 1 6-VALVE ALL-WAVE COURTENAY MANTEL £14/10/-
- 2 7-VALVE GULBRANSEN CABINETS £10/10/-
- 1 7-VALVE PHILLIPS ALL-WAVE MANTEL £18/10/-
- 1 8-VALVE MAJESTIC CHASSIS AND SPEAKER ... £3/-/-

DEMONSTRATION AND SAMPLE MODELS

- 2 ONLY 6-VALVE ZENITH ALL-WAVE MANTEL ... £18/10/-
- 1 ONLY 6-VALVE G.E.C. ALL-WAVE MANTEL ... £23/10/-
- 1 ONLY 5-VALVE G.E.C. ALL-WAVE MANTEL ... £19/10/-

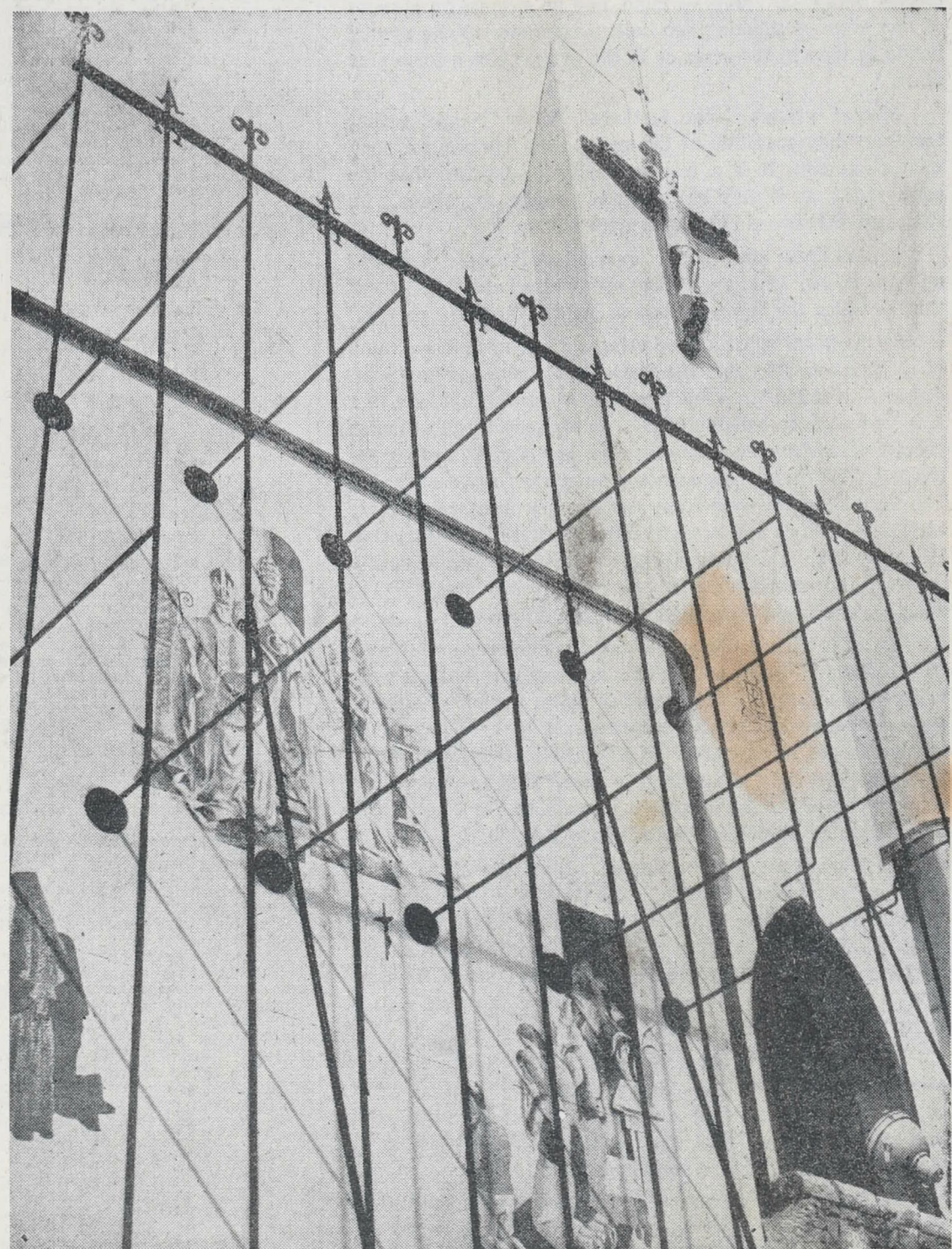
BE EARLY — THIS OFFER IS GENUINE

- ALSO: 3 MANTEL CABINETS Only 30/- each
- 1 USED CONSOLE CABINET Only 20/-

'Phone 2822

SUTCLIFFE'S LTD.

Where There is Harmony in Every Transaction
HERETAUNGA STREET, HASTINGS.



EMPIRE EXHIBITION.—The Roman Catholic Church at the British Empire Exhibition at Glasgow. The massive railings and wall-paintings are a striking feature.

WESTERMAN'S "TOP-SCORE"

SALE

NOW ON - - - OFFERS

Slashing Price Reductions in All Departments

THE BIGGEST BARGAIN BOOM IN H.B.

— SHOWROOM SNIPS —

OUTSTANDING FURNISHING VALUES.

- PASTEL COLOURED BLANKETS. In soft new shades. Usual Price 25/6. SALE PRICE 29/6 pair
- Double Bed. Usual Price 57/6. SALE PRICE 49/6 pair
- 28 PAIRS DOUBLE BED WHITE BLANKETS. Usual Price 42/6 pair. SALE PRICE 37/6 pair
- 15 PIECES OF SILKY DRAPINGS. For beautiful Curtains and Bedspreads, etc. Usual Prices 1/11, 2/11 to 3/6. SALE PRICE 1/- yard
- CURTAIN NETS. 20 Pieces Nets, Muslins and Marquisettes. At Half Price. Usual Prices 1/11, 2/11 to 4/6. SALE PRICE 1/-, 1/6 to 2/3 yd.
- 50in. HEAVY SHADOW TISSUES. Three designs. Usual Price 4/11. SALE PRICE 2/6 yard
- 46in. SILK SHADOW TISSUE. Usual Price 3/6. SALE PRICE 1/- yard
- 8 PIECES 50in. FADELESS CASEMENTS. Assorted colours. Usual Prices 2/11 and 3/6. SALE PRICE 1/- yard
- 30 REVERSIBLE WOOL FLOOR RUGS. Plain and Fancy. Beautiful quality. Usual Price 15/6. SALE PRICE 12/9 each

WESTERMAN'S

The Quality Drapers. — HASTINGS

SHIPPING
BLUE STAR LINE
FAST SERVICE TO LONDON.
Spacious comfortably appointed staterooms available in each vessel for a limited number of passengers.

ESCORTED TOURS
ACROSS CANADA AND U.S.A.
Leaving in March, April and May by Aorangi and Niagara, via Vancouver, by Mariposa and Monterey, via San Francisco. Special programme, giving detailed itineraries post free on application to:-

★ TRUCKS! ★
AND COMMERCIAL VEHICLES
VANS! LIGHT DELIVERIES! PICK-UPS! DUMP TRUCKS!
FARM TRUCKS! TRADE DELIVERIES!
We have the Finest Range to be found ANYWHERE, from 5-cwt. to 4-ton capacity.

A "PANDEMONIUM" OR
A "CONDOMINIUM"?
Joint Rule of New Hebrides
is Sharply Criticised;
Settlers' Complaints
Severe criticism of the condition of the New Hebrides under the joint rule of Britain and France is expressed by the Rev. T. E. Riddle, of Takapuna, who recently revisited the group after an absence of 27 years.

Government
Investigation of
Facial Eczema
Minister Discusses
Report From
Waikato
Position of Distress
in Hawke's Bay
Reviewed
Results Wanted
Cases Quoted

Mayor's Views
Criticised by
Mr E. L. Cullen
Commenting on the recently expressed view of Mr G. A. Maddison, Mayor of Hastings, that distress is just as bad now as it was three years ago, Mr E. L. Cullen, M.P., for Hawke's Bay, stated yesterday that he had gone to some trouble to obtain what he believed to be the true position.

MAIL NOTICES
OUTWARD OVERSEAS MAILS.
WEDNESDAY, JULY 6.
Cook Islands, Tahiti, Tonga and Fiji per Manungu from Auckland. Mails close at Hastings 4 p.m., Napier 3.20 p.m.

LOADING ARRANGEMENTS.
(Circumstances Permitting)
FROM WELLINGTON FOR NAPIER AND GISBORNE.
AWAHOU loads Friday, July 8.

THESE ARE GRAND BUYING—SEE THEM NOW!
We also invite you to inspect our Fine Selection of USED CARS—sold under our R. & G. (Reconditioned and Guaranteed) Plan. Your absolute protection and assurance of Honest Value and Fair Dealing!

LOCAL AND GENERAL
Singing Practice for Orphans
The Hastings Orphans' Club held their first choir practice to-night, conducted by Orphan Anderson. There was a good attendance of members and it is hoped they will be ready to perform at the next korero on Tuesday, July 12.

Personal
A Particular Case.
"His Worship featured as a particular case of necessity, one in which a Scheme 5 worker with wife and five children, was stated to be receiving only £2 18/6. If his Worship had investigated that case before giving it publicity, he would have ascertained that the worker concerned receives, in addition, from the State, a family allowance, milk rations and Karitane supplies, giving him an income from the State equivalent to £3 9/3 per week, which he can supplement, if he is able, up to £4 per week, without affecting his relief.

Mayor's Views
Criticised by
Mr E. L. Cullen
Commenting on the recently expressed view of Mr G. A. Maddison, Mayor of Hastings, that distress is just as bad now as it was three years ago, Mr E. L. Cullen, M.P., for Hawke's Bay, stated yesterday that he had gone to some trouble to obtain what he believed to be the true position.

MAIL NOTICES
INLAND AIR MAILS.
For Gisborne 11 a.m., daily except Sunday. Also at 6 p.m. on Saturdays only for dispatch from Palmerston North on Sundays.

FOR RAROTONGA AND COOK ISLANDS from AUCKLAND:
Matua, Thursday, July 14.
FOR NUKULOFA (Tonga), APIA (Samoa), SUVA (Fiji), from AUCKLAND.

J. E. PEACH & CO., LTD.
NAPIER HASTINGS WAIROA
Buy from Hawke's Bay's Leading Garages:
J. E. PEACH & CO., LTD.
NAPIER HASTINGS WAIROA

LOCAL AND GENERAL
Two Parliaments Open
Two Parliaments in the Southern Hemisphere were opened simultaneously last week, an unusual coincidence, which made one Christchurch business man think for a moment that the world had gone mad.

Personal
Miss Phillips is a Tahape visitor to Napier.
Mr J. B. Hotchin is a Wellington visitor to Napier.

Mayor's Views
Criticised by
Mr E. L. Cullen
Commenting on the recently expressed view of Mr G. A. Maddison, Mayor of Hastings, that distress is just as bad now as it was three years ago, Mr E. L. Cullen, M.P., for Hawke's Bay, stated yesterday that he had gone to some trouble to obtain what he believed to be the true position.

INLAND AIR MAILS.
For Gisborne 11 a.m., daily except Sunday. Also at 6 p.m. on Saturdays only for dispatch from Palmerston North on Sundays.

FOR RAROTONGA AND COOK ISLANDS from AUCKLAND:
Matua, Thursday, July 14.
FOR NUKULOFA (Tonga), APIA (Samoa), SUVA (Fiji), from AUCKLAND.

POLITICAL OPINIONISTS
"There are as many opinions as there are men," said a Roman philosopher, but that is one of those easily accepted sayings the ultimate truth of which cannot survive after close examination. There is such a thing as individual ideology. Witness the fact that men have arisen whose discoveries, theories, or even conjectures have revolutionised many of the long-accepted practices of human conduct.

LOCAL AND GENERAL
Two Parliaments Open
Two Parliaments in the Southern Hemisphere were opened simultaneously last week, an unusual coincidence, which made one Christchurch business man think for a moment that the world had gone mad.

Personal
Miss Phillips is a Tahape visitor to Napier.
Mr J. B. Hotchin is a Wellington visitor to Napier.

Mayor's Views
Criticised by
Mr E. L. Cullen
Commenting on the recently expressed view of Mr G. A. Maddison, Mayor of Hastings, that distress is just as bad now as it was three years ago, Mr E. L. Cullen, M.P., for Hawke's Bay, stated yesterday that he had gone to some trouble to obtain what he believed to be the true position.

INLAND AIR MAILS.
For Gisborne 11 a.m., daily except Sunday. Also at 6 p.m. on Saturdays only for dispatch from Palmerston North on Sundays.

FOR RAROTONGA AND COOK ISLANDS from AUCKLAND:
Matua, Thursday, July 14.
FOR NUKULOFA (Tonga), APIA (Samoa), SUVA (Fiji), from AUCKLAND.

POLITICAL OPINIONISTS
"There are as many opinions as there are men," said a Roman philosopher, but that is one of those easily accepted sayings the ultimate truth of which cannot survive after close examination. There is such a thing as individual ideology. Witness the fact that men have arisen whose discoveries, theories, or even conjectures have revolutionised many of the long-accepted practices of human conduct.

LOCAL AND GENERAL
Two Parliaments Open
Two Parliaments in the Southern Hemisphere were opened simultaneously last week, an unusual coincidence, which made one Christchurch business man think for a moment that the world had gone mad.

Personal
Miss Phillips is a Tahape visitor to Napier.
Mr J. B. Hotchin is a Wellington visitor to Napier.

Mayor's Views
Criticised by
Mr E. L. Cullen
Commenting on the recently expressed view of Mr G. A. Maddison, Mayor of Hastings, that distress is just as bad now as it was three years ago, Mr E. L. Cullen, M.P., for Hawke's Bay, stated yesterday that he had gone to some trouble to obtain what he believed to be the true position.

ELECTRICAL
WICKERY Electrical Co. Ltd.
Shipping of Electric Kettles, Jugs and Spare Elements.

FOR RAROTONGA AND COOK ISLANDS from AUCKLAND:
Matua, Thursday, July 14.
FOR NUKULOFA (Tonga), APIA (Samoa), SUVA (Fiji), from AUCKLAND.

POLITICAL OPINIONISTS
"There are as many opinions as there are men," said a Roman philosopher, but that is one of those easily accepted sayings the ultimate truth of which cannot survive after close examination. There is such a thing as individual ideology. Witness the fact that men have arisen whose discoveries, theories, or even conjectures have revolutionised many of the long-accepted practices of human conduct.

LOCAL AND GENERAL
Two Parliaments Open
Two Parliaments in the Southern Hemisphere were opened simultaneously last week, an unusual coincidence, which made one Christchurch business man think for a moment that the world had gone mad.

Personal
Miss Phillips is a Tahape visitor to Napier.
Mr J. B. Hotchin is a Wellington visitor to Napier.

Mayor's Views
Criticised by
Mr E. L. Cullen
Commenting on the recently expressed view of Mr G. A. Maddison, Mayor of Hastings, that distress is just as bad now as it was three years ago, Mr E. L. Cullen, M.P., for Hawke's Bay, stated yesterday that he had gone to some trouble to obtain what he believed to be the true position.

ELECTRICAL
WICKERY Electrical Co. Ltd.
Shipping of Electric Kettles, Jugs and Spare Elements.

FOR RAROTONGA AND COOK ISLANDS from AUCKLAND:
Matua, Thursday, July 14.
FOR NUKULOFA (Tonga), APIA (Samoa), SUVA (Fiji), from AUCKLAND.

POLITICAL OPINIONISTS
"There are as many opinions as there are men," said a Roman philosopher, but that is one of those easily accepted sayings the ultimate truth of which cannot survive after close examination. There is such a thing as individual ideology. Witness the fact that men have arisen whose discoveries, theories, or even conjectures have revolutionised many of the long-accepted practices of human conduct.

LOCAL AND GENERAL
Two Parliaments Open
Two Parliaments in the Southern Hemisphere were opened simultaneously last week, an unusual coincidence, which made one Christchurch business man think for a moment that the world had gone mad.

Personal
Miss Phillips is a Tahape visitor to Napier.
Mr J. B. Hotchin is a Wellington visitor to Napier.

Mayor's Views
Criticised by
Mr E. L. Cullen
Commenting on the recently expressed view of Mr G. A. Maddison, Mayor of Hastings, that distress is just as bad now as it was three years ago, Mr E. L. Cullen, M.P., for Hawke's Bay, stated yesterday that he had gone to some trouble to obtain what he believed to be the true position.

ELECTRICAL
WICKERY Electrical Co. Ltd.
Shipping of Electric Kettles, Jugs and Spare Elements.

FOR RAROTONGA AND COOK ISLANDS from AUCKLAND:
Matua, Thursday, July 14.
FOR NUKULOFA (Tonga), APIA (Samoa), SUVA (Fiji), from AUCKLAND.

POLITICAL OPINIONISTS
"There are as many opinions as there are men," said a Roman philosopher, but that is one of those easily accepted sayings the ultimate truth of which cannot survive after close examination. There is such a thing as individual ideology. Witness the fact that men have arisen whose discoveries, theories, or even conjectures have revolutionised many of the long-accepted practices of human conduct.

LOCAL AND GENERAL
Two Parliaments Open
Two Parliaments in the Southern Hemisphere were opened simultaneously last week, an unusual coincidence, which made one Christchurch business man think for a moment that the world had gone mad.

Personal
Miss Phillips is a Tahape visitor to Napier.
Mr J. B. Hotchin is a Wellington visitor to Napier.

Mayor's Views
Criticised by
Mr E. L. Cullen
Commenting on the recently expressed view of Mr G. A. Maddison, Mayor of Hastings, that distress is just as bad now as it was three years ago, Mr E. L. Cullen, M.P., for Hawke's Bay, stated yesterday that he had gone to some trouble to obtain what he believed to be the true position.

RECORD TIDE LEVELS AT NAPIER

Two Feet Above Normal at Wharves

Although no record of the tides in previous years has been kept at Napier, the level reached during the last few days, as has been the case throughout New Zealand, is considered to be much higher than for many years.

Two feet above the normal low water and high water levels. The usual recording gauge kept by the Napier Harbour Board was out of commission, and the tides were measured by the ordinary levels at the wharves.

Mr H. F. Searl, civil engineer for harbours and rivers to the Public Works Department in New South Wales, arrived by the Awatea from Sydney on Sunday. After a visit to Rotorua he will join the Maungani for her island cruise.

DEBATING SEASON OPENED

Record Attendance

THREE SPEECHES AT NAPIER

The President of the Napier Debating Society (Mr J. Tattersall) expressed his gratification, when opening the Society's first evening for the 1938 season at the record attendance.

Three impromptu debates were given the subjects being— "That on the subject of Parliament being as at present constituted New Zealand would be better governed by a Committee consisting of one representative from each of the 10 provinces."

"That it is desirable that women police should be established in New Zealand" was then moved by Mr L. C. Mendelssohn and Mr F. H. Uren, who were opposed by Mr E. A. Worley and Mr F. Bridge who were narrowly defeated.

The third motion, "That British prestige throughout the world is on the decline." After a very interesting debate Mr P. Mayo and Mr F. R. S. Ashton were favored by a small margin by Mr K. O'Halloran and Mr Connell speaking for the negative.

At the end of each debate many valuable contributions were given. The ability of some of the new and inexperienced members was particularly noteworthy.

Mr J. H. Fieldhouse in judging the speakers, said that style and subject matter were carefully analysed and he gave many valuable suggestions to the speakers. After a hearty vote of thanks was accorded him for his assistance, it was decided to hold the next meeting on Monday, July 11, when three set debates will be held.

The 14,000-ton motor-tanker Inverdargle, built for British owners, has been launched at Hamburg.

FIRST DAY AT TRENTHAM

WELLINGTON RACING CLUB

WINTER MEETING

Main Event to Emination

By Telegraph-Press Association.

WELLINGTON, July 5. The Wellington Racing Club's winter meeting was opened to-day in beautiful weather. There was a very large attendance, but the going was heavy and holding after rain and overnight frost.

The totalisator handled £51,666 10/-, compared with 47,927 10/- last year, an increase of £4,739. L. Dulieu, whose mount, Sunder, fell at the first fence in the Victoria Hurdles, was taken to hospital with head injuries.

Results.—MARIU HACK AND HUNTERS' STEEPLECHASE. Of £500; about 2½ miles. Of £100; about 2½ miles.

WOBURN HANDICAP. Of £300; six furlongs. 6.10—GREAT PAL 8.7 (Mackie) 1 15.1—Jan Ridd 8.8 (C. L. Gouls- 2

WELLINGTON HURDLES HANDICAP. Of £300; one mile and a half. 1.1—Black Man 9.0 (Harvis) 1 15.15—Chaste 9.0 (car. 9.1) 2 (Linton) 3

STEWARDS' HANDICAP. Of £400; six furlongs. 8.8—MATRU, 8.0 (Doyle) 1 6.6—Prince Acre, 9.2 (Winder) 2 10.12—Merial, 8.0 (S. Wilson) 3

STEWARDS' HANDICAP. Of £400; six furlongs. 8.8—MATRU, 8.0 (Doyle) 1 6.6—Prince Acre, 9.2 (Winder) 2 10.12—Merial, 8.0 (S. Wilson) 3

WELLINGTON STEEPLECHASE. Of £1000; about 3½ miles. 7.7—ERINATON, 10.2 (McRae) 1 2.2—Santoff, 9.13 (Sait) 2 3.3—All Irish, 10.9 3

WELLINGTON STEEPLECHASE. Of £1000; about 3½ miles. 7.7—ERINATON, 10.2 (McRae) 1 2.2—Santoff, 9.13 (Sait) 2 3.3—All Irish, 10.9 3

WELLINGTON STEEPLECHASE. Of £1000; about 3½ miles. 7.7—ERINATON, 10.2 (McRae) 1 2.2—Santoff, 9.13 (Sait) 2 3.3—All Irish, 10.9 3

WELLINGTON STEEPLECHASE. Of £1000; about 3½ miles. 7.7—ERINATON, 10.2 (McRae) 1 2.2—Santoff, 9.13 (Sait) 2 3.3—All Irish, 10.9 3

WELLINGTON STEEPLECHASE. Of £1000; about 3½ miles. 7.7—ERINATON, 10.2 (McRae) 1 2.2—Santoff, 9.13 (Sait) 2 3.3—All Irish, 10.9 3

Insurance on Mala

COVERED FOR £6000

Death at Brisbane Race Meeting

United Press Association—Copyright.

BRISBANE, July 5. The New Zealand-bred racehorse Mala, which died as the result of injuries suffered in a fall after passing the post at the Brisbane races on Saturday, was insured for £6000.

TRENTHAM HURDLES HANDICAP. Of £500; 1½ miles. 1.1—FULL-O'-SCOTCH, 10.2 (Jenkins) 1 2.2—Courtward, 10.4 (Ridgway) 2 6.6—Spender, 9.2 (Carroll) 3

WHYTE HANDICAP. Of £500; one mile. 6.5—ARCTIC KING, 8.11 (S. Wilson) 1 3.2—Quadron, 8.6 (Atkins) 2 8.8—Conveyor, 7.11 (Tattersall) 3

TEARO HANDICAP. Of £300; one mile. 4.4—The Wrecker 8.0 (L. J. Ellis) 1 1.1—El Meynell, 8.9 (C. G. Goulsbro) 2

WELLINGTON STEEPLECHASE. Of £1000; about 3½ miles. 7.7—ERINATON, 10.2 (McRae) 1 2.2—Santoff, 9.13 (Sait) 2 3.3—All Irish, 10.9 3

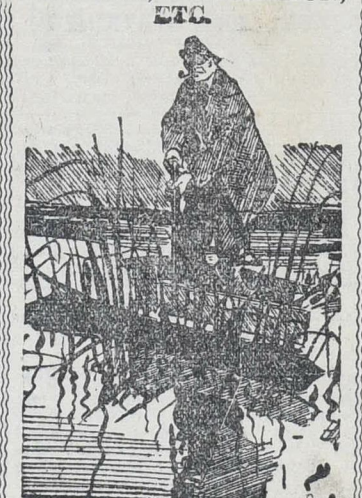
Racing Fixtures

July— 5, 7, 9—Wellington R.C. 9—Westport J.C. (at Riccarton). 16—Hawke's Bay Hunt Club. 16—Waimate District Hunt C.

A Junkers heavy bomber, one of a fleet ordered by Sweden, crashed in the Baltic recently, and was lost with its crew of two officers and one N.C.O. The machine was flying from the Junkers works at Düsseldorf, Germany, to its station at Vasteras, Sweden.

Woods' Great Peppermint Cure For Bronchial Coughs, Colds, Influenza.

Now is the Time to Consider the Purchase of a NEW GUN, AMMUNITION, ETC.



HENRY WILLIAMS & SONS, LTD., Napier and Hastings.

Words may be false and full of art

—Thomas Shadwell

but your taste will tell you KINGS GATE is better



19 for 8d. 20 for 1/4 30 for 2/- 50 for 3/4

Rothmans KINGS GATE MADE IN ENGLAND BY ROTHMANS OF PALL MALL

Only Three Days To Go! MY LUCK'S IN!

Large advertisement for Art Union tickets with illustrations of a hot air balloon and a child, and text including 'FIRST PRIZE £2000' and 'ALLUVIAL GOLD'.

Advertisement for F. Cray, P.O. Box 33, Napier, offering '400 PRIZES' and 'No. 72' tickets.

Advertisement for Hawke's Bay Hunt Annual Meeting, Hastings Racecourse, Saturday, July 16, 1938, including a detailed program of events.

Large advertisement for Australia, featuring the text 'AUSTRALIA GLORIOUS WINTER HOLIDAY LAND...' and 'UNION STEAM SHIP CO. OF NEW ZEALAND LTD.' with illustrations of a ship and a city.

Advertisement for Millar & Giorgi Ltd. featuring the text 'GREAT WINTER Sale' and 'More Bargain Thrills for Men at M. & G's' with illustrations of men in suits.

Advertisement for Siegfried (1) horse, featuring the text 'AT MR R. H. HOLDEN'S MANA STUD, TE MAHANGA, POUKAWA, HAWKE'S BAY.' and a detailed description of the horse's pedigree and performance.

Advertisement for Art Union tickets, featuring the text 'ART UNION TICKETS 2/6' and '400 PRIZES'.

