



USE CARE FOR SALE
BARCLAY MOTORS
KARAOKE BOAT HASTINGS

FRUIT, PRODUCE, SEEDS
HAWKE'S BAY FRUIT AND VEGETABLES
HAWKE'S BAY SEEDS

WANTED TO SELL
FOR SALE: Ladies' Day Book
FOR SALE: Ladies' Day Book

STOCK SALES
NINTH ANNUAL SALE
MR T. STODDARD ABBERDON ANGUS BULLS

PROGRAMMES ON THE AIR
THURSDAY, 12th OCTOBER, 1939
9.00 Head - To Be Sold Without Reserve

MAKE YOUR PETROL ALLOWANCE GO FURTHER!
By Purchasing One of Our GUARANTEED USED CARS OR TRUCKS in the 7 to 10H.P. Class...

SEE US ABOUT THE BEST REPAIRS FOR THE SPINDS
AIRSWORTH'S GARAGE

PROPERTY FOR SALE
HAWKE'S BAY PROPERTY

WANTED TO BUY
CHURCH SERVICES
ST. MATTHEW'S, HASTINGS

THE SATURDAY AFTERNOON
BAPTIST CHURCH
ST. JOHN'S PROTESTANT CHURCH

EVENING SESSION
HASTINGS 10.15
MORRIS 8.45

WILLIAMS & KETTLE LIMITED
HASTINGS

TENDERS
TO BUILDERS
WATERLOO COUNCIL

PROPERTY FOR SALE
HAWKE'S BAY PROPERTY

WANTED TO BUY
CHURCH SERVICES
ST. MATTHEW'S, HASTINGS

THE SATURDAY AFTERNOON
BAPTIST CHURCH
ST. JOHN'S PROTESTANT CHURCH

EVENING SESSION
HASTINGS 10.15
MORRIS 8.45

WILLIAMS & KETTLE LIMITED
HASTINGS

TENDERS
TO BUILDERS
WATERLOO COUNCIL

PROPERTY FOR SALE
HAWKE'S BAY PROPERTY

WANTED TO BUY
CHURCH SERVICES
ST. MATTHEW'S, HASTINGS

THE SATURDAY AFTERNOON
BAPTIST CHURCH
ST. JOHN'S PROTESTANT CHURCH

EVENING SESSION
HASTINGS 10.15
MORRIS 8.45

WILLIAMS & KETTLE LIMITED
HASTINGS

TENDERS
TO BUILDERS
WATERLOO COUNCIL

PROPERTY FOR SALE
HAWKE'S BAY PROPERTY

WANTED TO BUY
CHURCH SERVICES
ST. MATTHEW'S, HASTINGS

THE SATURDAY AFTERNOON
BAPTIST CHURCH
ST. JOHN'S PROTESTANT CHURCH

EVENING SESSION
HASTINGS 10.15
MORRIS 8.45

WILLIAMS & KETTLE LIMITED
HASTINGS

TENDERS
TO BUILDERS
WATERLOO COUNCIL

PROPERTY FOR SALE
HAWKE'S BAY PROPERTY

WANTED TO BUY
CHURCH SERVICES
ST. MATTHEW'S, HASTINGS

THE SATURDAY AFTERNOON
BAPTIST CHURCH
ST. JOHN'S PROTESTANT CHURCH

EVENING SESSION
HASTINGS 10.15
MORRIS 8.45

WILLIAMS & KETTLE LIMITED
HASTINGS

TENDERS
TO BUILDERS
WATERLOO COUNCIL

PROPERTY FOR SALE
HAWKE'S BAY PROPERTY

WANTED TO BUY
CHURCH SERVICES
ST. MATTHEW'S, HASTINGS

THE SATURDAY AFTERNOON
BAPTIST CHURCH
ST. JOHN'S PROTESTANT CHURCH

EVENING SESSION
HASTINGS 10.15
MORRIS 8.45

WILLIAMS & KETTLE LIMITED
HASTINGS

TENDERS
TO BUILDERS
WATERLOO COUNCIL

PROPERTY FOR SALE
HAWKE'S BAY PROPERTY

WANTED TO BUY
CHURCH SERVICES
ST. MATTHEW'S, HASTINGS

THE SATURDAY AFTERNOON
BAPTIST CHURCH
ST. JOHN'S PROTESTANT CHURCH

EVENING SESSION
HASTINGS 10.15
MORRIS 8.45

WILLIAMS & KETTLE LIMITED
HASTINGS

TENDERS
TO BUILDERS
WATERLOO COUNCIL

PROPERTY FOR SALE
HAWKE'S BAY PROPERTY

WANTED TO BUY
CHURCH SERVICES
ST. MATTHEW'S, HASTINGS

THE SATURDAY AFTERNOON
BAPTIST CHURCH
ST. JOHN'S PROTESTANT CHURCH

EVENING SESSION
HASTINGS 10.15
MORRIS 8.45

WILLIAMS & KETTLE LIMITED
HASTINGS

TENDERS
TO BUILDERS
WATERLOO COUNCIL

PROPERTY FOR SALE
HAWKE'S BAY PROPERTY

WANTED TO BUY
CHURCH SERVICES
ST. MATTHEW'S, HASTINGS

THE SATURDAY AFTERNOON
BAPTIST CHURCH
ST. JOHN'S PROTESTANT CHURCH

EVENING SESSION
HASTINGS 10.15
MORRIS 8.45

WILLIAMS & KETTLE LIMITED
HASTINGS

TENDERS
TO BUILDERS
WATERLOO COUNCIL

PROPERTY FOR SALE
HAWKE'S BAY PROPERTY

WANTED TO BUY
CHURCH SERVICES
ST. MATTHEW'S, HASTINGS

THE SATURDAY AFTERNOON
BAPTIST CHURCH
ST. JOHN'S PROTESTANT CHURCH

EVENING SESSION
HASTINGS 10.15
MORRIS 8.45

WILLIAMS & KETTLE LIMITED
HASTINGS

TENDERS
TO BUILDERS
WATERLOO COUNCIL

PROPERTY FOR SALE
HAWKE'S BAY PROPERTY

WANTED TO BUY
CHURCH SERVICES
ST. MATTHEW'S, HASTINGS

THE SATURDAY AFTERNOON
BAPTIST CHURCH
ST. JOHN'S PROTESTANT CHURCH

EVENING SESSION
HASTINGS 10.15
MORRIS 8.45

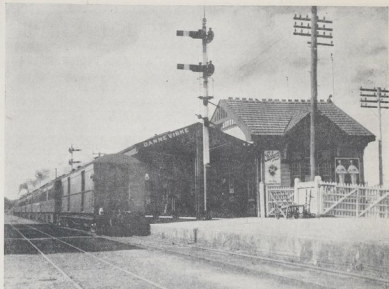
WILLIAMS & KETTLE LIMITED
HASTINGS







DO NEED TO ASK FOR A SMILE.—People of the Wellesley School line up for the "Daily Mail" cameras in front of their modern new building. One week here on there for the future when one sees sturdy healthy young New Zealanders such as these.



4 RAIL CENTRE.—The afternoon mail train pulls out from the Dominion Railway Station. At the centre of important city and shipping industries, Dominion is a great store of transport of all kinds, and the volume of road traffic is usually great.



"SO THIS IS HAWK'S BAY."—Two boys arrive from Australia back to the planned spring vacation at Cornwall Park, Hastings.



"MOMMY! THIS IS DO ME."—A young boy back home with a vallety at the Cornwall Park Zoo and Gardens.



A NEW ZEALAND WEDDING IN LONDON.—At St. John's Church, Dominion-born Bruce, Bruce, New Zealand, Harry, Prince of Wales, was married to St. Ronald Pelt.

ARDATH

**ARDATH**

CORN TIPPED VIRGINIA

*The Definitely Superior  
Cork Tipped  
Cigarette*

TEN for SIXPENCE  
25 for 15s. 50 for 26

Yesterday On 'Change'

Transaction List

Wellington Exchange

Bank of Australia	100
Bank of New Zealand	100
Bank of New South Wales	100
Bank of Queensland	100
Bank of South Africa	100
Bank of Western Australia	100
Bank of New Zealand (S)	100
Bank of New Zealand (A)	100
Bank of New Zealand (C)	100
Bank of New Zealand (D)	100
Bank of New Zealand (E)	100
Bank of New Zealand (F)	100
Bank of New Zealand (G)	100
Bank of New Zealand (H)	100
Bank of New Zealand (I)	100
Bank of New Zealand (J)	100
Bank of New Zealand (K)	100
Bank of New Zealand (L)	100
Bank of New Zealand (M)	100
Bank of New Zealand (N)	100
Bank of New Zealand (O)	100
Bank of New Zealand (P)	100
Bank of New Zealand (Q)	100
Bank of New Zealand (R)	100
Bank of New Zealand (S)	100
Bank of New Zealand (T)	100
Bank of New Zealand (U)	100
Bank of New Zealand (V)	100
Bank of New Zealand (W)	100
Bank of New Zealand (X)	100
Bank of New Zealand (Y)	100
Bank of New Zealand (Z)	100

CHRISTCHURCH EXCHANGE

Bank of Australia	100
Bank of New Zealand	100
Bank of New South Wales	100
Bank of Queensland	100
Bank of South Africa	100
Bank of Western Australia	100
Bank of New Zealand (S)	100
Bank of New Zealand (A)	100
Bank of New Zealand (C)	100
Bank of New Zealand (D)	100
Bank of New Zealand (E)	100
Bank of New Zealand (F)	100
Bank of New Zealand (G)	100
Bank of New Zealand (H)	100
Bank of New Zealand (I)	100
Bank of New Zealand (J)	100
Bank of New Zealand (K)	100
Bank of New Zealand (L)	100
Bank of New Zealand (M)	100
Bank of New Zealand (N)	100
Bank of New Zealand (O)	100
Bank of New Zealand (P)	100
Bank of New Zealand (Q)	100
Bank of New Zealand (R)	100
Bank of New Zealand (S)	100
Bank of New Zealand (T)	100
Bank of New Zealand (U)	100
Bank of New Zealand (V)	100
Bank of New Zealand (W)	100
Bank of New Zealand (X)	100
Bank of New Zealand (Y)	100
Bank of New Zealand (Z)	100

Good Prices At Bull Sale

JERSEY OFFERING

Total Realisation Of 4087 Guineas.

TOP PRICE OF 110 GNS.

By Telegraph—James AMBLINGTON, Sept. 15.—Prices at the national Jersey bull sale at Christchurch were unduly low in the early part of the sale.

For the two days 131 bulls were sold, the total realisation being £4087 and the average price 31s. 6d. The top price was 110s., paid by Mr. W. W. Williams, for Nelsie, a two-year-old bull, sold on the second day.

The top cow was 110s., paid by Mr. W. W. Williams, for Nelsie, a two-year-old cow, sold on the second day.

The top heifer was 110s., paid by Mr. W. W. Williams, for Nelsie, a two-year-old heifer, sold on the second day.

The top bull was 110s., paid by Mr. W. W. Williams, for Nelsie, a two-year-old bull, sold on the second day.

The top cow was 110s., paid by Mr. W. W. Williams, for Nelsie, a two-year-old cow, sold on the second day.

The top heifer was 110s., paid by Mr. W. W. Williams, for Nelsie, a two-year-old heifer, sold on the second day.

The top bull was 110s., paid by Mr. W. W. Williams, for Nelsie, a two-year-old bull, sold on the second day.

Quotations At Dannevirke

PRICES FOR STOCK

Little Alteration At Thursday's Sale

BROKERS' REPORTS

Meats, Williams and Harris Ltd., the Dannevirke stock exchange, reports that the market was quiet on Thursday, with a few transactions in sheep and cattle. The market was generally steady, with a few transactions in sheep and cattle. The market was generally steady, with a few transactions in sheep and cattle. The market was generally steady, with a few transactions in sheep and cattle.

FAT LAMB CLASSES AT SPRING SHOW

A Strong Feature

SPECIAL PRIZES AND CUPS

Entries Close Soon

The fat lamb section of the Dannevirke Show, which is being held at Dannevirke, is a strong feature of the show. The entries are closing soon, and the prizes and cups are being awarded. The entries are closing soon, and the prizes and cups are being awarded. The entries are closing soon, and the prizes and cups are being awarded.

LONG FAL INTO RIVER

"Daily Mail" Special Service.

BAIRDFORTH: Falling from the traffic bridge in the Hamilton street, an elderly man, Albert James, received slight injuries yesterday morning. He was taken to the Wellington public hospital.

The first indication that anything was amiss came from a woman sitting on the bridge by the side of the river. She saw a man fall from the bridge. She called out to him, but he did not answer. She then called to the police, who arrived and found the man lying on the ground. He was taken to the hospital.

WEEK-END GOLF AT ORMONDVILLE

Third Round Draw For Pinrose Cup

"Daily Mail" Special Service.

The third round of the Pinrose Cup golf tournament at Ormondville is being held today. The draw for the third round is as follows: A. J. Smith vs. B. J. Jones, C. J. Brown vs. D. J. White, E. J. Green vs. F. J. Black, G. J. Grey vs. H. J. Gold, I. J. Silver vs. J. J. Bronze, K. J. Iron vs. L. J. Steel, M. J. Lead vs. N. J. Tin, O. J. Copper vs. P. J. Zinc, Q. J. Nickel vs. R. J. Cadmium, S. J. Mercury vs. T. J. Bismuth, U. J. Antimony vs. V. J. Arsenic, W. J. Selenium vs. X. J. Tellurium, Y. J. Iodine vs. Z. J. Barium.

HIGH POULTRY RATES MAINTAINED

Demand Evident At Market Sale

Meats, Williams and Harris Ltd., the Dannevirke stock exchange, reports that the market for poultry was very active on Thursday. The prices were maintained at a high level, and the demand was evident. The market was very active, and the prices were maintained at a high level. The demand was evident, and the market was very active.

MAKING BRIDGE SURE

Workmen Bashed Today—The workmen who are engaged in the construction of the new bridge over the river at Dannevirke, are being bashed today. The workmen are being bashed because they are not working hard enough. The workmen are being bashed because they are not working hard enough. The workmen are being bashed because they are not working hard enough.

SPRING'S gayest and most colourful materials



Write now to Mrs. H. J. Jones, 101, Victoria Street, Wellington. We have a large stock of the latest in spring materials, including silks, cottons, and woollens. Write now to Mrs. H. J. Jones, 101, Victoria Street, Wellington.

**COTTONS**

PRINTED CLOTHS—Small quantities. Price 1/6 per yard.

PRINTED LENSES—Small quantities. Price 1/6 per yard.

PRINTED BARBORED—Small quantities. Price 1/6 per yard.

"BONNING CLOTH"—Small quantities. Price 1/6 per yard.

"SUMMER BREEZE"—Small quantities. Price 1/6 per yard.

**WOOLLENS**

Off-white, cream, pink, and blue. Price 1/6 per yard.

White, cream, pink, and blue. Price 1/6 per yard.

White, cream, pink, and blue. Price 1/6 per yard.

White, cream, pink, and blue. Price 1/6 per yard.

Westerman & Co. 'Famous for modest prices'



# "EFFECTIVE SMACK AT THE ENEMY"

## Vivid Account Of British Raid On Nazi Warships

### PILOTS' THRILLING STORIES

Dated Press Association—Oceania.

The Ministry of Information announces that the first operation mounted from the British Isles since the outbreak of war has now been given. It is the story of the raid on the German fleet in the Bay of Biscay which took place on August 17th. The raid was a surprise attack on the German fleet which was on its way to the Atlantic coast of France. The British fleet, under the command of Admiral Tovey, consisted of the battleship Hood, the battlecruiser Renown, the cruiser Norfolk, and the destroyers Ashmore, Blyth, and the Hunt-class destroyers. The German fleet, under the command of Admiral Raeder, consisted of the battleship Bismarck, the heavy cruiser Prinz Eugen, the light cruiser Leipzig, and the destroyers. The British fleet was victorious in the battle, and the German fleet was forced to retreat. The British fleet captured the German ship, the heavy cruiser Prinz Eugen, and the light cruiser Leipzig. The British fleet also sank the German ship, the heavy cruiser Prinz Eugen, and the light cruiser Leipzig. The British fleet also sank the German ship, the heavy cruiser Prinz Eugen, and the light cruiser Leipzig.

# SAFE IN GERMAN HOSPITAL

## MISSING DOMINION AIRMAN

### RADIO BROADCAST Bally Burned When "Plane Crashed"

By Telegraph—Press Association.

WELLINGTON, Sept. 15.

According to a wireless message received from a German broadcast station at 12.30 today, Flight Officer (F.O.) J. G. ... was missing following the crash of his plane in the Bay of Biscay on the first day of the war, as in an earlier broadcast. The plane was seen to crash on the face and side of a mountain, and the bomber was seen in the same place.



A WAVE SMILE—Lt. Keith Gorman, C.O. of the Royal Air Force, on his way to the front lines in France.

# NATIONAL PARTY AIDS

## ORGANIZATION WILL BE MAINTAINED—PATRIOTIC WORK

### Leader's Statement Issued

By Telegraph—Press Association.

WELLINGTON, Sept. 15.

A declaration that the National Party will continue to be maintained as a patriotic organization, and will take the full share of its share of the work of the Government, was made by the National Party leader, Mr. ... in a statement issued today. He said that the National Party will continue to be maintained as a patriotic organization, and will take the full share of its share of the work of the Government, was made by the National Party leader, Mr. ... in a statement issued today. He said that the National Party will continue to be maintained as a patriotic organization, and will take the full share of its share of the work of the Government, was made by the National Party leader, Mr. ... in a statement issued today.

# YOUNG NEW ZEALAND'S GREAT RESPONSE

## Flocking To The Colours For Overseas Service

### A RUSH OF VOLUNTEERS

By Telegraph—Press Association.

WELLINGTON, Sept. 15.

"The response this week from young New Zealand has been truly magnificent," said the Minister of Defence, Mr. ... today. He said that the response this week from young New Zealand has been truly magnificent, and that the number of volunteers for overseas service has increased by 10,000 since the outbreak of war. He said that the response this week from young New Zealand has been truly magnificent, and that the number of volunteers for overseas service has increased by 10,000 since the outbreak of war.

The raid was a surprise attack on the German fleet which was on its way to the Atlantic coast of France. The British fleet, under the command of Admiral Tovey, consisted of the battleship Hood, the battlecruiser Renown, the cruiser Norfolk, and the destroyers Ashmore, Blyth, and the Hunt-class destroyers. The German fleet, under the command of Admiral Raeder, consisted of the battleship Bismarck, the heavy cruiser Prinz Eugen, the light cruiser Leipzig, and the destroyers. The British fleet was victorious in the battle, and the German fleet was forced to retreat. The British fleet captured the German ship, the heavy cruiser Prinz Eugen, and the light cruiser Leipzig. The British fleet also sank the German ship, the heavy cruiser Prinz Eugen, and the light cruiser Leipzig.

The raid was a surprise attack on the German fleet which was on its way to the Atlantic coast of France. The British fleet, under the command of Admiral Tovey, consisted of the battleship Hood, the battlecruiser Renown, the cruiser Norfolk, and the destroyers Ashmore, Blyth, and the Hunt-class destroyers. The German fleet, under the command of Admiral Raeder, consisted of the battleship Bismarck, the heavy cruiser Prinz Eugen, the light cruiser Leipzig, and the destroyers. The British fleet was victorious in the battle, and the German fleet was forced to retreat. The British fleet captured the German ship, the heavy cruiser Prinz Eugen, and the light cruiser Leipzig. The British fleet also sank the German ship, the heavy cruiser Prinz Eugen, and the light cruiser Leipzig.

The raid was a surprise attack on the German fleet which was on its way to the Atlantic coast of France. The British fleet, under the command of Admiral Tovey, consisted of the battleship Hood, the battlecruiser Renown, the cruiser Norfolk, and the destroyers Ashmore, Blyth, and the Hunt-class destroyers. The German fleet, under the command of Admiral Raeder, consisted of the battleship Bismarck, the heavy cruiser Prinz Eugen, the light cruiser Leipzig, and the destroyers. The British fleet was victorious in the battle, and the German fleet was forced to retreat. The British fleet captured the German ship, the heavy cruiser Prinz Eugen, and the light cruiser Leipzig. The British fleet also sank the German ship, the heavy cruiser Prinz Eugen, and the light cruiser Leipzig.

The raid was a surprise attack on the German fleet which was on its way to the Atlantic coast of France. The British fleet, under the command of Admiral Tovey, consisted of the battleship Hood, the battlecruiser Renown, the cruiser Norfolk, and the destroyers Ashmore, Blyth, and the Hunt-class destroyers. The German fleet, under the command of Admiral Raeder, consisted of the battleship Bismarck, the heavy cruiser Prinz Eugen, the light cruiser Leipzig, and the destroyers. The British fleet was victorious in the battle, and the German fleet was forced to retreat. The British fleet captured the German ship, the heavy cruiser Prinz Eugen, and the light cruiser Leipzig. The British fleet also sank the German ship, the heavy cruiser Prinz Eugen, and the light cruiser Leipzig.

The raid was a surprise attack on the German fleet which was on its way to the Atlantic coast of France. The British fleet, under the command of Admiral Tovey, consisted of the battleship Hood, the battlecruiser Renown, the cruiser Norfolk, and the destroyers Ashmore, Blyth, and the Hunt-class destroyers. The German fleet, under the command of Admiral Raeder, consisted of the battleship Bismarck, the heavy cruiser Prinz Eugen, the light cruiser Leipzig, and the destroyers. The British fleet was victorious in the battle, and the German fleet was forced to retreat. The British fleet captured the German ship, the heavy cruiser Prinz Eugen, and the light cruiser Leipzig. The British fleet also sank the German ship, the heavy cruiser Prinz Eugen, and the light cruiser Leipzig.

The raid was a surprise attack on the German fleet which was on its way to the Atlantic coast of France. The British fleet, under the command of Admiral Tovey, consisted of the battleship Hood, the battlecruiser Renown, the cruiser Norfolk, and the destroyers Ashmore, Blyth, and the Hunt-class destroyers. The German fleet, under the command of Admiral Raeder, consisted of the battleship Bismarck, the heavy cruiser Prinz Eugen, the light cruiser Leipzig, and the destroyers. The British fleet was victorious in the battle, and the German fleet was forced to retreat. The British fleet captured the German ship, the heavy cruiser Prinz Eugen, and the light cruiser Leipzig. The British fleet also sank the German ship, the heavy cruiser Prinz Eugen, and the light cruiser Leipzig.

The raid was a surprise attack on the German fleet which was on its way to the Atlantic coast of France. The British fleet, under the command of Admiral Tovey, consisted of the battleship Hood, the battlecruiser Renown, the cruiser Norfolk, and the destroyers Ashmore, Blyth, and the Hunt-class destroyers. The German fleet, under the command of Admiral Raeder, consisted of the battleship Bismarck, the heavy cruiser Prinz Eugen, the light cruiser Leipzig, and the destroyers. The British fleet was victorious in the battle, and the German fleet was forced to retreat. The British fleet captured the German ship, the heavy cruiser Prinz Eugen, and the light cruiser Leipzig. The British fleet also sank the German ship, the heavy cruiser Prinz Eugen, and the light cruiser Leipzig.

The raid was a surprise attack on the German fleet which was on its way to the Atlantic coast of France. The British fleet, under the command of Admiral Tovey, consisted of the battleship Hood, the battlecruiser Renown, the cruiser Norfolk, and the destroyers Ashmore, Blyth, and the Hunt-class destroyers. The German fleet, under the command of Admiral Raeder, consisted of the battleship Bismarck, the heavy cruiser Prinz Eugen, the light cruiser Leipzig, and the destroyers. The British fleet was victorious in the battle, and the German fleet was forced to retreat. The British fleet captured the German ship, the heavy cruiser Prinz Eugen, and the light cruiser Leipzig. The British fleet also sank the German ship, the heavy cruiser Prinz Eugen, and the light cruiser Leipzig.

The raid was a surprise attack on the German fleet which was on its way to the Atlantic coast of France. The British fleet, under the command of Admiral Tovey, consisted of the battleship Hood, the battlecruiser Renown, the cruiser Norfolk, and the destroyers Ashmore, Blyth, and the Hunt-class destroyers. The German fleet, under the command of Admiral Raeder, consisted of the battleship Bismarck, the heavy cruiser Prinz Eugen, the light cruiser Leipzig, and the destroyers. The British fleet was victorious in the battle, and the German fleet was forced to retreat. The British fleet captured the German ship, the heavy cruiser Prinz Eugen, and the light cruiser Leipzig. The British fleet also sank the German ship, the heavy cruiser Prinz Eugen, and the light cruiser Leipzig.

The raid was a surprise attack on the German fleet which was on its way to the Atlantic coast of France. The British fleet, under the command of Admiral Tovey, consisted of the battleship Hood, the battlecruiser Renown, the cruiser Norfolk, and the destroyers Ashmore, Blyth, and the Hunt-class destroyers. The German fleet, under the command of Admiral Raeder, consisted of the battleship Bismarck, the heavy cruiser Prinz Eugen, the light cruiser Leipzig, and the destroyers. The British fleet was victorious in the battle, and the German fleet was forced to retreat. The British fleet captured the German ship, the heavy cruiser Prinz Eugen, and the light cruiser Leipzig. The British fleet also sank the German ship, the heavy cruiser Prinz Eugen, and the light cruiser Leipzig.

# Changes In Fire Cabinet

## NEWS CENSORSHIP

### Prohibition of Foreign Papers

By Telegraph—Press Association.

WELLINGTON, Sept. 15.

The Government has taken steps to increase its control over news censorship, and has prohibited the sale of foreign newspapers in New Zealand. The Government has taken steps to increase its control over news censorship, and has prohibited the sale of foreign newspapers in New Zealand. The Government has taken steps to increase its control over news censorship, and has prohibited the sale of foreign newspapers in New Zealand.

# SAFEGUARDING THE SEA ROUTES

## British Navy Has 85,000 Miles To Protect And Does It Well

By Telegraph—Press Association.

WELLINGTON, Sept. 15.

The Ministry of Information, outlining the task of protecting British trade routes, states that a daily average of 150 British merchantmen of 5000 tons and upwards are at sea on every day throughout the world, and that the British Navy has 85,000 miles to protect. The Ministry of Information, outlining the task of protecting British trade routes, states that a daily average of 150 British merchantmen of 5000 tons and upwards are at sea on every day throughout the world, and that the British Navy has 85,000 miles to protect.

# More Production

## Need

By Telegraph—Press Association.

WELLINGTON, Sept. 15.

The Government has announced that it is increasing its efforts to increase production in New Zealand. The Government has announced that it is increasing its efforts to increase production in New Zealand. The Government has announced that it is increasing its efforts to increase production in New Zealand.

# Current Rumour Squashed

## PETROL RESTRICTIONS

### For National Only

#### SUPPLIES CONSERVED

By Telegraph—Press Association.

WELLINGTON, Sept. 15.

The Government has announced that it is increasing its efforts to conserve petrol supplies in New Zealand. The Government has announced that it is increasing its efforts to conserve petrol supplies in New Zealand. The Government has announced that it is increasing its efforts to conserve petrol supplies in New Zealand.

# A Gallant Deed Of Bravery Recarded

## Boy Scout Risks Injury To Life

### Silver Cross

By Telegraph—Press Association.

WELLINGTON, Sept. 15.

The Boy Scouts Association has awarded a Silver Cross to a young man for his gallant deed of bravery. The Boy Scouts Association has awarded a Silver Cross to a young man for his gallant deed of bravery. The Boy Scouts Association has awarded a Silver Cross to a young man for his gallant deed of bravery.

# TRANSPORT RULES AMENDED

## JUDGE'S COMMENT

### Divorce Case

#### Some ANOMALIES

By Telegraph—Press Association.

WELLINGTON, Sept. 15.

The Hon. Justice Gault has commented on the amendments to the Transport Rules. The Hon. Justice Gault has commented on the amendments to the Transport Rules. The Hon. Justice Gault has commented on the amendments to the Transport Rules.

# MINISTER'S OPINION

## Service In Present Emergency

### APPEAL TO FARMERS

By Telegraph—Press Association.

WELLINGTON, Sept. 15.

The Minister of Agriculture has issued an appeal to farmers to increase their production of foodstuffs. The Minister of Agriculture has issued an appeal to farmers to increase their production of foodstuffs. The Minister of Agriculture has issued an appeal to farmers to increase their production of foodstuffs.

# More Production

## Need

By Telegraph—Press Association.

WELLINGTON, Sept. 15.

The Government has announced that it is increasing its efforts to increase production in New Zealand. The Government has announced that it is increasing its efforts to increase production in New Zealand. The Government has announced that it is increasing its efforts to increase production in New Zealand.

# Current Rumour Squashed

## PETROL RESTRICTIONS

### For National Only

#### SUPPLIES CONSERVED

By Telegraph—Press Association.

WELLINGTON, Sept. 15.

The Government has announced that it is increasing its efforts to conserve petrol supplies in New Zealand. The Government has announced that it is increasing its efforts to conserve petrol supplies in New Zealand. The Government has announced that it is increasing its efforts to conserve petrol supplies in New Zealand.

# Finals Decided YESTERDAY

## Championship

### Finals

By Telegraph—Press Association.

WELLINGTON, Sept. 15.

The finals of the New Zealand Championships were held yesterday. The finals of the New Zealand Championships were held yesterday. The finals of the New Zealand Championships were held yesterday.

# EMERGENCY DEFENCE WORKS

## Extended Hours

### ADDITIONAL PAY PROVIDED

By Telegraph—Press Association.

WELLINGTON, Sept. 15.

The Government has announced that it is increasing its efforts to increase production in New Zealand. The Government has announced that it is increasing its efforts to increase production in New Zealand. The Government has announced that it is increasing its efforts to increase production in New Zealand.

# EMERGENCY DEFENCE WORKS

## Extended Hours

### ADDITIONAL PAY PROVIDED

By Telegraph—Press Association.

WELLINGTON, Sept. 15.

The Government has announced that it is increasing its efforts to increase production in New Zealand. The Government has announced that it is increasing its efforts to increase production in New Zealand. The Government has announced that it is increasing its efforts to increase production in New Zealand.

# Current Rumour Squashed

## PETROL RESTRICTIONS

### For National Only

#### SUPPLIES CONSERVED

By Telegraph—Press Association.

WELLINGTON, Sept. 15.

The Government has announced that it is increasing its efforts to conserve petrol supplies in New Zealand. The Government has announced that it is increasing its efforts to conserve petrol supplies in New Zealand. The Government has announced that it is increasing its efforts to conserve petrol supplies in New Zealand.

# Current Rumour Squashed

## PETROL RESTRICTIONS

### For National Only

#### SUPPLIES CONSERVED

By Telegraph—Press Association.

WELLINGTON, Sept. 15.

The Government has announced that it is increasing its efforts to conserve petrol supplies in New Zealand. The Government has announced that it is increasing its efforts to conserve petrol supplies in New Zealand. The Government has announced that it is increasing its efforts to conserve petrol supplies in New Zealand.

# Current Rumour Squashed

## PETROL RESTRICTIONS

### For National Only

#### SUPPLIES CONSERVED

By Telegraph—Press Association.

WELLINGTON, Sept. 15.

The Government has announced that it is increasing its efforts to conserve petrol supplies in New Zealand. The Government has announced that it is increasing its efforts to conserve petrol supplies in New Zealand. The Government has announced that it is increasing its efforts to conserve petrol supplies in New Zealand.

# Rugby Conference Postponed

By Telegraph—Press Association.

WELLINGTON, Sept. 15.

The Rugby Conference has been postponed. The Rugby Conference has been postponed. The Rugby Conference has been postponed.

# Rugby Conference Postponed

By Telegraph—Press Association.

WELLINGTON, Sept. 15.

The Rugby Conference has been postponed. The Rugby Conference has been postponed. The Rugby Conference has been postponed.

# Rugby Conference Postponed

By Telegraph—Press Association.

WELLINGTON, Sept. 15.

The Rugby Conference has been postponed. The Rugby Conference has been postponed. The Rugby Conference has been postponed.

# Rugby Conference Postponed

By Telegraph—Press Association.

WELLINGTON, Sept. 15.

The Rugby Conference has been postponed. The Rugby Conference has been postponed. The Rugby Conference has been postponed.

# Rugby Conference Postponed

By Telegraph—Press Association.

WELLINGTON, Sept. 15.

The Rugby Conference has been postponed. The Rugby Conference has been postponed. The Rugby Conference has been postponed.











THE HARDEST WINTER EVER - and he enjoyed it - THANKS TO MOSGIEL SOCKS & UNDERWEAR



A NEW VOICE IN EXTERIOR DECORATION! NEW COLOURS NEW EFFECTS NEW MATS FINISH

ROBERT HOLT & SONS LTD. Robert & Horlene Merchants - Napier & Hastings Distributors of E.A.M. Products

MR FARMER! For Your SHEEP DIP Muttons, Whites, Coopers, Quibbles, etc. GRASS SEED Full Stock, including English, Clover, etc. SUPERPHOSPHATE FOR TOP-DRESSING

FUEL Now is the time to order! Ring, or leave orders at WILLIAMS & CREAGH LTD. COAL YARD 77088 1/2. TOWN OFFICE: REYNOLDS BUILDINGS, TENNISON STREET, NAPIER, HONOUR 9.

At the FLAXMERE STUD, near Hastings gr. h. THEIO 31 (1932)

By TETRATHENA 14 (THE VETERAN) - SCOTCH GIFT. From TETHE (SENATOR) - SERENOLO, by WILLIAM THE THIRD 2.

10 GUINEAS b. h. LORD QUEX 31

10 GUINEAS SCHUMANN'S MINERAL SALTS

FLAXMERE STUD, HASTINGS

FOXTON MEETING HELD AT AWAPUNI

Many Hawke's Bay Horses CENTREPOISE FAVOURITE FOR THE CUP

Sporting Gift In The Sprint

(By MOTUROA.)

There is quite a Hawke's Bay favourite about the Foxton Races Club's meeting at Awapuni today and the local contingent appear likely to give a very good account of themselves, as most of the horses run have been doing very good form.

The open sprint race is the feature, but the successful debut in open company at Wanganui last week, some certainly to be one of the best bought horses in the Carnarvon Cup today, and, as this good young horse will be able to claim an allowance to be well suited there to T. T. It looks as if he will prove very hard to beat. Nevertheless, he can expect to stand a chance in this distance, but both Smoke Screen and Molekin may be in need of a race. Gay Chan is well, and Sporty has been doing very well in his winning form. However, little Sporting Gift goes well in the sprint and it is likely to prove troublesome.

PROCESSIONS was very good. The following are the results:-

Table with 2 columns: Race Name and Winner. Races include: 1. 100 Yards, 2. 200 Yards, 3. 300 Yards, 4. 400 Yards, 5. 500 Yards, 6. 600 Yards, 7. 700 Yards, 8. 800 Yards, 9. 900 Yards, 10. 1000 Yards.

11. 1200 Yards, 12. 1300 Yards, 13. 1400 Yards, 14. 1500 Yards, 15. 1600 Yards, 16. 1700 Yards, 17. 1800 Yards, 18. 1900 Yards, 19. 2000 Yards.

20. 2100 Yards, 21. 2200 Yards, 22. 2300 Yards, 23. 2400 Yards, 24. 2500 Yards, 25. 2600 Yards, 26. 2700 Yards, 27. 2800 Yards, 28. 2900 Yards, 29. 3000 Yards.

30. 3100 Yards, 31. 3200 Yards, 32. 3300 Yards, 33. 3400 Yards, 34. 3500 Yards, 35. 3600 Yards, 36. 3700 Yards, 37. 3800 Yards, 38. 3900 Yards, 39. 4000 Yards.

40. 4100 Yards, 41. 4200 Yards, 42. 4300 Yards, 43. 4400 Yards, 44. 4500 Yards, 45. 4600 Yards, 46. 4700 Yards, 47. 4800 Yards, 48. 4900 Yards, 49. 5000 Yards.

50. 5100 Yards, 51. 5200 Yards, 52. 5300 Yards, 53. 5400 Yards, 54. 5500 Yards, 55. 5600 Yards, 56. 5700 Yards, 57. 5800 Yards, 58. 5900 Yards, 59. 6000 Yards.

60. 6100 Yards, 61. 6200 Yards, 62. 6300 Yards, 63. 6400 Yards, 64. 6500 Yards, 65. 6600 Yards, 66. 6700 Yards, 67. 6800 Yards, 68. 6900 Yards, 69. 7000 Yards.

70. 7100 Yards, 71. 7200 Yards, 72. 7300 Yards, 73. 7400 Yards, 74. 7500 Yards, 75. 7600 Yards, 76. 7700 Yards, 77. 7800 Yards, 78. 7900 Yards, 79. 8000 Yards.

80. 8100 Yards, 81. 8200 Yards, 82. 8300 Yards, 83. 8400 Yards, 84. 8500 Yards, 85. 8600 Yards, 86. 8700 Yards, 87. 8800 Yards, 88. 8900 Yards, 89. 9000 Yards.

90. 9100 Yards, 91. 9200 Yards, 92. 9300 Yards, 93. 9400 Yards, 94. 9500 Yards, 95. 9600 Yards, 96. 9700 Yards, 97. 9800 Yards, 98. 9900 Yards, 99. 10000 Yards.

100. 10100 Yards, 101. 10200 Yards, 102. 10300 Yards, 103. 10400 Yards, 104. 10500 Yards, 105. 10600 Yards, 106. 10700 Yards, 107. 10800 Yards, 108. 10900 Yards, 109. 11000 Yards.

110. 11100 Yards, 111. 11200 Yards, 112. 11300 Yards, 113. 11400 Yards, 114. 11500 Yards, 115. 11600 Yards, 116. 11700 Yards, 117. 11800 Yards, 118. 11900 Yards, 119. 12000 Yards.

120. 12100 Yards, 121. 12200 Yards, 122. 12300 Yards, 123. 12400 Yards, 124. 12500 Yards, 125. 12600 Yards, 126. 12700 Yards, 127. 12800 Yards, 128. 12900 Yards, 129. 13000 Yards.

130. 13100 Yards, 131. 13200 Yards, 132. 13300 Yards, 133. 13400 Yards, 134. 13500 Yards, 135. 13600 Yards, 136. 13700 Yards, 137. 13800 Yards, 138. 13900 Yards, 139. 14000 Yards.

140. 14100 Yards, 141. 14200 Yards, 142. 14300 Yards, 143. 14400 Yards, 144. 14500 Yards, 145. 14600 Yards, 146. 14700 Yards, 147. 14800 Yards, 148. 14900 Yards, 149. 15000 Yards.

150. 15100 Yards, 151. 15200 Yards, 152. 15300 Yards, 153. 15400 Yards, 154. 15500 Yards, 155. 15600 Yards, 156. 15700 Yards, 157. 15800 Yards, 158. 15900 Yards, 159. 16000 Yards.

160. 16100 Yards, 161. 16200 Yards, 162. 16300 Yards, 163. 16400 Yards, 164. 16500 Yards, 165. 16600 Yards, 166. 16700 Yards, 167. 16800 Yards, 168. 16900 Yards, 169. 17000 Yards.

170. 17100 Yards, 171. 17200 Yards, 172. 17300 Yards, 173. 17400 Yards, 174. 17500 Yards, 175. 17600 Yards, 176. 17700 Yards, 177. 17800 Yards, 178. 17900 Yards, 179. 18000 Yards.

180. 18100 Yards, 181. 18200 Yards, 182. 18300 Yards, 183. 18400 Yards, 184. 18500 Yards, 185. 18600 Yards, 186. 18700 Yards, 187. 18800 Yards, 188. 18900 Yards, 189. 19000 Yards.

190. 19100 Yards, 191. 19200 Yards, 192. 19300 Yards, 193. 19400 Yards, 194. 19500 Yards, 195. 19600 Yards, 196. 19700 Yards, 197. 19800 Yards, 198. 19900 Yards, 199. 20000 Yards.

200. 20100 Yards, 201. 20200 Yards, 202. 20300 Yards, 203. 20400 Yards, 204. 20500 Yards, 205. 20600 Yards, 206. 20700 Yards, 207. 20800 Yards, 208. 20900 Yards, 209. 21000 Yards.

TIDEWATER FIT AND WELL

THE AVONDALE CUP FAVOURITE

GOING IS HEAVY

Bean Leon Selected For Avondale Stakes

Should rain have fallen throughout the week it is doubtful and the prospect of a very good day for the opening day of the Avondale Society's CHAMPA meeting at Avondale - to-day.

The main handicap was chosen for the Avondale Cup and the race will be the feature of the day. The race is the Avondale Cup and the winner will be the Avondale Cup winner. The race is the Avondale Cup and the winner will be the Avondale Cup winner.

The Flying Handicap is a very open race and the conditions will be very good. The race is the Flying Handicap and the winner will be the Flying Handicap winner.

There is a fine field in the Champa Handicap, for which the Hastings favourite Bean Leon is the favourite. The race is the Champa Handicap and the winner will be the Champa Handicap winner.

The Flying Handicap is a very open race and the conditions will be very good. The race is the Flying Handicap and the winner will be the Flying Handicap winner.

The Flying Handicap is a very open race and the conditions will be very good. The race is the Flying Handicap and the winner will be the Flying Handicap winner.

The Flying Handicap is a very open race and the conditions will be very good. The race is the Flying Handicap and the winner will be the Flying Handicap winner.

The Flying Handicap is a very open race and the conditions will be very good. The race is the Flying Handicap and the winner will be the Flying Handicap winner.

The Flying Handicap is a very open race and the conditions will be very good. The race is the Flying Handicap and the winner will be the Flying Handicap winner.

The Flying Handicap is a very open race and the conditions will be very good. The race is the Flying Handicap and the winner will be the Flying Handicap winner.

The Flying Handicap is a very open race and the conditions will be very good. The race is the Flying Handicap and the winner will be the Flying Handicap winner.

The Flying Handicap is a very open race and the conditions will be very good. The race is the Flying Handicap and the winner will be the Flying Handicap winner.

The Flying Handicap is a very open race and the conditions will be very good. The race is the Flying Handicap and the winner will be the Flying Handicap winner.

The Flying Handicap is a very open race and the conditions will be very good. The race is the Flying Handicap and the winner will be the Flying Handicap winner.

The Flying Handicap is a very open race and the conditions will be very good. The race is the Flying Handicap and the winner will be the Flying Handicap winner.

The Flying Handicap is a very open race and the conditions will be very good. The race is the Flying Handicap and the winner will be the Flying Handicap winner.

The Flying Handicap is a very open race and the conditions will be very good. The race is the Flying Handicap and the winner will be the Flying Handicap winner.

The Flying Handicap is a very open race and the conditions will be very good. The race is the Flying Handicap and the winner will be the Flying Handicap winner.

The Flying Handicap is a very open race and the conditions will be very good. The race is the Flying Handicap and the winner will be the Flying Handicap winner.

The Flying Handicap is a very open race and the conditions will be very good. The race is the Flying Handicap and the winner will be the Flying Handicap winner.

GET PETS FOR GENTS - FITTED TRAVELLING CASES H. J. GRIEVE LTD. Jewellers and Engravers King Specialist.



GREYS IS GREAT - BECAUSE ONLY A PERFECT TOBACCO CAN GIVE YOU A PERFECT CHOICE

To Stand at Wahi Road, Hastings. b.h. ILLUMINATION (10) By LINDSAY 17 (Lally) - Ludlow, by Ardross 4.

At the TE MARANGA STUD, near Hastings. ch. h. ST. BOSWELLS (I) Imp. Foal 1939.

By SOLARIO 25, by Gairnesham - 25m Warrumb. by Sandilocks 2.

At the FLAXMERE STUD, near Hastings. gr. h. THEIO 31 (1932)

By TETRATHENA 14 (THE VETERAN) - SCOTCH GIFT. From TETHE (SENATOR) - SERENOLO, by WILLIAM THE THIRD 2.

10 GUINEAS b. h. LORD QUEX 31

10 GUINEAS SCHUMANN'S MINERAL SALTS

FLAXMERE STUD, HASTINGS

b.h. LEGATE 22 (1932)

Apply A. F. M. SYMES, Richmond Park LONGLANDS HASTINGS

DOKKO THE ORIGINAL DOCKING PLANTING THE SAME SATISFACTORY SERVICE TO ALL FARMERS.

# Safety First!

Be safe and live with more fun.  
Play safe and save money by insuring.

## R. J. HOLDER

HARRIS' BAYS' RETIRED BOND  
WICKENS ST. Phone 683 - NAFER

# MARK'S BAY

## WALL MOUNTED

## KLEXEMA Skin Treatment

PROBING REMOVES FADING, BLEMISHES, EXCESS PORES,  
EXCESS SEBUM, EXCESS HAIR.

### SUCCESSFULLY TREATED

## KLEXEMA ROOMS

1010 B. B. ROAD, BOSTON, MASS.  
Phone 212 - 2221. Hours: 9 a. m. to 10 p. m.

Special attention given to the treatment of skin diseases and the removal of blemishes, freckles, and wrinkles.

A Purchase of a  
**LADY'S OR GENT'S  
WRISTLET WATCH**  
with a  
**B. M. KESSEL**  
TWEAQUE GIVE  
AWARD  
Is a good investment.  
BUY IT TODAY

## C. H. CRABBY & CO., LTD.

COAL, FIREWOOD, COKE  
& CEMENTS.

All grades of best quality  
at lowest prices.

Phone Nos. 1171 and 451.  
**C. H. CRABBY & CO., LTD.**  
STATION ST. - NAFER

## KEEP AHEAD OF WORLD AFFAIRS

With  
**Radio**  
In First-class Condition

## GUY E. MILNE

REPAIRER OF  
RADIO SETS

## CAMPBELL BROS. LIMITED

### BODYBUILDERS

All sizes of  
**BODYWORK**  
WITH THE LATEST  
BLACKENING.

Phone 1111  
Kearney Bldg. - NAFER

## GET YOUR NEWS DIRECT!

We can Overhaul any make  
of Radio

Expert  
Confidential Work.  
Latest Test Instruments.  
SPECIAL SERVICE TO  
1930 AND NEWER LITMATE  
FAIRCHILD'S RADIO LTD.

## DEATHS

**FRANKCROWE** - Mr. Frank C. Frankcroe, 67 years, died at his home, 100 E. 11th St., on September 10, 1930. Burial in the cemetery at 10:30 a. m. on September 11, 1930. Friends will call at the home, 100 E. 11th St., from 10 to 12 o'clock on September 11, 1930. Funeral services will be held at 1:30 p. m. on September 11, 1930, at the home. Burial in the cemetery at 2:30 p. m. on September 11, 1930. Friends will call at the home, 100 E. 11th St., from 10 to 12 o'clock on September 11, 1930. Funeral services will be held at 1:30 p. m. on September 11, 1930, at the home. Burial in the cemetery at 2:30 p. m. on September 11, 1930.

## PUBLIC NOTICES

**HARRIS' BAYS' RETIRED BOND**  
WICKENS ST. Phone 683 - NAFER

## AUCTIONS

**NOTICE TO PROPERTY OWNERS**  
SAVINGS RAJ FARMERS' COOP. ASSN. 1000 W. 10th St. ST. LOUIS, MO.

## LAND AGENTS

**W. TUCKER, Ltd.**  
Colonial Woodmen House  
1000 W. 10th St. ST. LOUIS, MO.

## Batteries Collected

Bring the Parts of your  
to collect Car Batteries  
and accumulators of all makes  
at our store.

## BISSELL ELECTRICAL

CO., LTD.  
CLIVE BUILDING - NAFER

## PHOTOGRAPHS

Local commercial studios in  
St. Louis, Mo. and  
Chicago, Ill. and  
New York, N. Y.

Phone 1111  
1000 W. 10th St. ST. LOUIS, MO.

## PUBLIC NOTICES

**HARRIS' BAYS' RETIRED BOND**  
WICKENS ST. Phone 683 - NAFER

## LAND AGENTS

**W. TUCKER, Ltd.**  
Colonial Woodmen House  
1000 W. 10th St. ST. LOUIS, MO.

## GET YOUR NEWS DIRECT!

We can Overhaul any make  
of Radio

## Batteries Collected

Bring the Parts of your  
to collect Car Batteries  
and accumulators of all makes  
at our store.

## DEATHS

**FRANKCROWE** - Mr. Frank C. Frankcroe, 67 years, died at his home, 100 E. 11th St., on September 10, 1930. Burial in the cemetery at 10:30 a. m. on September 11, 1930. Friends will call at the home, 100 E. 11th St., from 10 to 12 o'clock on September 11, 1930. Funeral services will be held at 1:30 p. m. on September 11, 1930, at the home. Burial in the cemetery at 2:30 p. m. on September 11, 1930.

## PUBLIC NOTICES

**HARRIS' BAYS' RETIRED BOND**  
WICKENS ST. Phone 683 - NAFER

## AUCTIONS

**NOTICE TO PROPERTY OWNERS**  
SAVINGS RAJ FARMERS' COOP. ASSN. 1000 W. 10th St. ST. LOUIS, MO.

## LAND AGENTS

**W. TUCKER, Ltd.**  
Colonial Woodmen House  
1000 W. 10th St. ST. LOUIS, MO.

## Batteries Collected

Bring the Parts of your  
to collect Car Batteries  
and accumulators of all makes  
at our store.

## DEATHS

**FRANKCROWE** - Mr. Frank C. Frankcroe, 67 years, died at his home, 100 E. 11th St., on September 10, 1930. Burial in the cemetery at 10:30 a. m. on September 11, 1930. Friends will call at the home, 100 E. 11th St., from 10 to 12 o'clock on September 11, 1930. Funeral services will be held at 1:30 p. m. on September 11, 1930, at the home. Burial in the cemetery at 2:30 p. m. on September 11, 1930.

## PUBLIC NOTICES

**HARRIS' BAYS' RETIRED BOND**  
WICKENS ST. Phone 683 - NAFER

## AUCTIONS

**NOTICE TO PROPERTY OWNERS**  
SAVINGS RAJ FARMERS' COOP. ASSN. 1000 W. 10th St. ST. LOUIS, MO.

## LAND AGENTS

**W. TUCKER, Ltd.**  
Colonial Woodmen House  
1000 W. 10th St. ST. LOUIS, MO.

## Batteries Collected

Bring the Parts of your  
to collect Car Batteries  
and accumulators of all makes  
at our store.

## DEATHS

**FRANKCROWE** - Mr. Frank C. Frankcroe, 67 years, died at his home, 100 E. 11th St., on September 10, 1930. Burial in the cemetery at 10:30 a. m. on September 11, 1930. Friends will call at the home, 100 E. 11th St., from 10 to 12 o'clock on September 11, 1930. Funeral services will be held at 1:30 p. m. on September 11, 1930, at the home. Burial in the cemetery at 2:30 p. m. on September 11, 1930.

## PUBLIC NOTICES

**HARRIS' BAYS' RETIRED BOND**  
WICKENS ST. Phone 683 - NAFER

## AUCTIONS

**NOTICE TO PROPERTY OWNERS**  
SAVINGS RAJ FARMERS' COOP. ASSN. 1000 W. 10th St. ST. LOUIS, MO.

## LAND AGENTS

**W. TUCKER, Ltd.**  
Colonial Woodmen House  
1000 W. 10th St. ST. LOUIS, MO.

## Batteries Collected

Bring the Parts of your  
to collect Car Batteries  
and accumulators of all makes  
at our store.

## DEATHS

**FRANKCROWE** - Mr. Frank C. Frankcroe, 67 years, died at his home, 100 E. 11th St., on September 10, 1930. Burial in the cemetery at 10:30 a. m. on September 11, 1930. Friends will call at the home, 100 E. 11th St., from 10 to 12 o'clock on September 11, 1930. Funeral services will be held at 1:30 p. m. on September 11, 1930, at the home. Burial in the cemetery at 2:30 p. m. on September 11, 1930.

## PUBLIC NOTICES

**HARRIS' BAYS' RETIRED BOND**  
WICKENS ST. Phone 683 - NAFER

## AUCTIONS

**NOTICE TO PROPERTY OWNERS**  
SAVINGS RAJ FARMERS' COOP. ASSN. 1000 W. 10th St. ST. LOUIS, MO.

## LAND AGENTS

**W. TUCKER, Ltd.**  
Colonial Woodmen House  
1000 W. 10th St. ST. LOUIS, MO.

## Batteries Collected

Bring the Parts of your  
to collect Car Batteries  
and accumulators of all makes  
at our store.

## DEATHS

**FRANKCROWE** - Mr. Frank C. Frankcroe, 67 years, died at his home, 100 E. 11th St., on September 10, 1930. Burial in the cemetery at 10:30 a. m. on September 11, 1930. Friends will call at the home, 100 E. 11th St., from 10 to 12 o'clock on September 11, 1930. Funeral services will be held at 1:30 p. m. on September 11, 1930, at the home. Burial in the cemetery at 2:30 p. m. on September 11, 1930.

## PUBLIC NOTICES

**HARRIS' BAYS' RETIRED BOND**  
WICKENS ST. Phone 683 - NAFER

## AUCTIONS

**NOTICE TO PROPERTY OWNERS**  
SAVINGS RAJ FARMERS' COOP. ASSN. 1000 W. 10th St. ST. LOUIS, MO.

## LAND AGENTS

**W. TUCKER, Ltd.**  
Colonial Woodmen House  
1000 W. 10th St. ST. LOUIS, MO.

## Batteries Collected

Bring the Parts of your  
to collect Car Batteries  
and accumulators of all makes  
at our store.

## DEATHS

**FRANKCROWE** - Mr. Frank C. Frankcroe, 67 years, died at his home, 100 E. 11th St., on September 10, 1930. Burial in the cemetery at 10:30 a. m. on September 11, 1930. Friends will call at the home, 100 E. 11th St., from 10 to 12 o'clock on September 11, 1930. Funeral services will be held at 1:30 p. m. on September 11, 1930, at the home. Burial in the cemetery at 2:30 p. m. on September 11, 1930.

## PUBLIC NOTICES

**HARRIS' BAYS' RETIRED BOND**  
WICKENS ST. Phone 683 - NAFER

## AUCTIONS

**NOTICE TO PROPERTY OWNERS**  
SAVINGS RAJ FARMERS' COOP. ASSN. 1000 W. 10th St. ST. LOUIS, MO.

## LAND AGENTS

**W. TUCKER, Ltd.**  
Colonial Woodmen House  
1000 W. 10th St. ST. LOUIS, MO.

## Batteries Collected

Bring the Parts of your  
to collect Car Batteries  
and accumulators of all makes  
at our store.

## DEATHS

**FRANKCROWE** - Mr. Frank C. Frankcroe, 67 years, died at his home, 100 E. 11th St., on September 10, 1930. Burial in the cemetery at 10:30 a. m. on September 11, 1930. Friends will call at the home, 100 E. 11th St., from 10 to 12 o'clock on September 11, 1930. Funeral services will be held at 1:30 p. m. on September 11, 1930, at the home. Burial in the cemetery at 2:30 p. m. on September 11, 1930.

## PUBLIC NOTICES

**HARRIS' BAYS' RETIRED BOND**  
WICKENS ST. Phone 683 - NAFER

## AUCTIONS

**NOTICE TO PROPERTY OWNERS**  
SAVINGS RAJ FARMERS' COOP. ASSN. 1000 W. 10th St. ST. LOUIS, MO.

## LAND AGENTS

**W. TUCKER, Ltd.**  
Colonial Woodmen House  
1000 W. 10th St. ST. LOUIS, MO.

## Batteries Collected

Bring the Parts of your  
to collect Car Batteries  
and accumulators of all makes  
at our store.

## DEATHS

**FRANKCROWE** - Mr. Frank C. Frankcroe, 67 years, died at his home, 100 E. 11th St., on September 10, 1930. Burial in the cemetery at 10:30 a. m. on September 11, 1930. Friends will call at the home, 100 E. 11th St., from 10 to 12 o'clock on September 11, 1930. Funeral services will be held at 1:30 p. m. on September 11, 1930, at the home. Burial in the cemetery at 2:30 p. m. on September 11, 1930.

## PUBLIC NOTICES

**HARRIS' BAYS' RETIRED BOND**  
WICKENS ST. Phone 683 - NAFER

## AUCTIONS

**NOTICE TO PROPERTY OWNERS**  
SAVINGS RAJ FARMERS' COOP. ASSN. 1000 W. 10th St. ST. LOUIS, MO.

## LAND AGENTS

**W. TUCKER, Ltd.**  
Colonial Woodmen House  
1000 W. 10th St. ST. LOUIS, MO.

## Batteries Collected

Bring the Parts of your  
to collect Car Batteries  
and accumulators of all makes  
at our store.