

Remedy of Neglect!
...how easily acquired
...be healed if you
...consult
ALAN GRANT
OPTICIAN

Time is running out
...the hour of decision
...the hour of action
...the hour of triumph

Time is running out
...the hour of decision
...the hour of action
...the hour of triumph

TOYS FOR TOMS
...FOR THE
...PING PONG SET
...Quality Products
...NEW SELECTION
...INSIDE
...BIGGER, SON & DRUMMOND
...Hastings, B.C.
Price - Two Pence.

REAL WAR WILL BEGIN TO-NIGHT
SAYS GERMANY
Nazi Reply to Speech by Mr Chamberlain

TIME FOR NEGOTIATION IS ENDED

Britain's Determined Stand

British Official Wireless.
(Received October 13, 11:45 am.)
REBURY, Oct. 13.
An emphatic "No" was the answer delivered by the British Prime Minister (Mr. Neville Chamberlain) to Hitler's peace proposal.

The Berlin correspondent of the Swedish newspaper "Aftonbladet" says "Hitler has decided to make Chamberlain's speech constitute a definite 'No' to his peace offer. Therefore he has taken all measures to prevent the war."

"Orders have already been issued to all the first line units to be prepared for action."

Germany's Rights
...to be able to defend
...to be able to defend
...to be able to defend

Frontier Violation.
...the British Government
...the British Government
...the British Government



UNITED STATES ARMY-COURTESY. (Received Oct. 14, 1:30 a.m.)

ENEMY PATROLS REPULSED BY FRENCH

A QUIET NIGHT ON THE WESTERN FRONT
...A Front-Line Action Is Developing
UNITED STATES ARMY-COURTESY. (Received Oct. 14, 1:30 a.m.)

Finland's Army Fully Mobilised

CAPITAL ALMOST DESERTED

Drastic Steps Show Resentment At Foreign Interference

STILL ANXIOUS FOR PEACE

UNITED STATES ARMY-COURTESY. (Received October 13, 2:30 p.m.)
LONDON, Oct. 13.
The Helsinki correspondent of the "New York Times" says that Finland now has 200,000 men under arms.

WASHINGTON'S APPEAL TO MOSCOW

FRIEND OF FINLAND ISUES INFLUENCE FOR PEACE

Unusual Step With General Support

UNITED STATES ARMY-COURTESY. (Received Oct. 11, 11:45 a.m.)
The Washington correspondent of the "New York Times" says that the United States is expressing its sympathy for Finland.

Nazis Want Trade With Chile

COOL RECEPTION - Scheme To Obviate Blockade

UNITED STATES ARMY-COURTESY. (Received Oct. 12, 11:45 a.m.)

ITALY MAY BE DRAWN IN

NAZIS EXPECT NEW CONSULTATIONS

Rome Again Stresses Neutrality

UNITED STATES ARMY-COURTESY. (Received Oct. 14, 8:30 a.m.)

Moscow Reports Mr Chamberlain Fairly

Impartial Summary Broadcast To Russia

UNITED STATES ARMY-COURTESY. (Received October 13, 1:45 a.m.)

SEVERE DEFEAT FOR JAPANESE

Communist Army Claims Big Success

Finland's Army Fully Mobilised

CAPITAL ALMOST DESERTED

Drastic Steps Show Resentment At Foreign Interference

STILL ANXIOUS FOR PEACE

WASHINGTON'S APPEAL TO MOSCOW

FRIEND OF FINLAND ISUES INFLUENCE FOR PEACE

Unusual Step With General Support

Nazis Want Trade With Chile

COOL RECEPTION - Scheme To Obviate Blockade

ITALY MAY BE DRAWN IN

NAZIS EXPECT NEW CONSULTATIONS

Rome Again Stresses Neutrality

Moscow Reports Mr Chamberlain Fairly

Impartial Summary Broadcast To Russia

SEVERE DEFEAT FOR JAPANESE

Communist Army Claims Big Success

ONE DOZEN U-BOATS SUNK

SUCCESSFUL RESULT IN REPLY TO ATTACKS

Fishermen Report Attack On British Warships

UNITED STATES ARMY-COURTESY. (Received October 13, 11:45 a.m.)

SEARCH BEGUN FOR LONE RAIDER

CANADA'S FIRST WAP LOAN ANNOUNCED

Two Hundred Million Dollars

UNITED STATES ARMY-COURTESY. (Received Oct. 13, 11:30 p.m.)

ONE DOZEN U-BOATS SUNK

SUCCESSFUL RESULT IN REPLY TO ATTACKS

Fishermen Report Attack On British Warships

UNITED STATES ARMY-COURTESY. (Received October 13, 11:45 a.m.)

SEARCH BEGUN FOR LONE RAIDER

CANADA'S FIRST WAP LOAN ANNOUNCED

Two Hundred Million Dollars

UNITED STATES ARMY-COURTESY. (Received Oct. 13, 11:30 p.m.)

ONE DOZEN U-BOATS SUNK

SUCCESSFUL RESULT IN REPLY TO ATTACKS

Fishermen Report Attack On British Warships

UNITED STATES ARMY-COURTESY. (Received October 13, 11:45 a.m.)

SEARCH BEGUN FOR LONE RAIDER

CANADA'S FIRST WAP LOAN ANNOUNCED

Two Hundred Million Dollars

UNITED STATES ARMY-COURTESY. (Received Oct. 13, 11:30 p.m.)

ONE DOZEN U-BOATS SUNK

SUCCESSFUL RESULT IN REPLY TO ATTACKS

HASTINGS THEATRES

Regent

TO-DAY!

Showing the Famous
Barker-Karpis Prohibition Drama

"VALLEY OF THE GIANTS"

WAVE MOORE
CLARE TREVOR
FRANK RONALD
Produced in Technicolor

Approved by National Exhibition.

Starts at 2.15 and 8 P.M.

Plays at Theatre
Telephone 2611

STATE

Plays at Theatre

Telephone 2611

TO-DAY

2.15 and 8 P.M.

SONS OF BONE

THE THRILL
GROWS GREATER

as well as
includes bring back
and you will
remember!

THINK AGE

POWER-FAYE-JOISON

ROSE OF WASHINGTON SQUARE

WILLIAM PARKER - JOE CONTON
HELEN BRADY

Starts at 2.15 and 8 P.M.

ROSE OF WASHINGTON SQUARE

WILLIAM PARKER - JOE CONTON
HELEN BRADY

Starts at 2.15 and 8 P.M.

TO-DAY

2.15 and 8 P.M.

ROSE OF WASHINGTON SQUARE

WILLIAM PARKER - JOE CONTON
HELEN BRADY

Starts at 2.15 and 8 P.M.

COSW

TO-DAY!

2 and 7.45 P.M.

MICKEY ROONEY

"HUCKLEBERRY FINN"

WALTER CONNOLLY
ALAN BROWN - ALFRED HAYWARD - JIM LAMONT
Starts at 2.15 and 8 P.M.

MUNICIPAL PICTURES

"S.O.S. TIDAL WAVE"

"FIXER DUGAN"

Starts at 2.15 and 8 P.M.

Municipal

EXCITING DRAMA AND CIRCUS ADVENTURE

"S.O.S. TIDAL WAVE"

"Fixer Dugan"

Starts at 2.15 and 8 P.M.

Regent

"VALLEY OF THE GIANTS"

Adventure Filmed in Technicolor

WAVE MOORE and CLARE TREVOR
lead the cast of "Valley of the Giants" which is the picture of the week. The picture is the most popular of the season.

Starts at 2.15 and 8 P.M.

STATE

TO-NIGHT

2.15 and 8 P.M.

TO-NIGHT

2.15 and 8 P.M.

STATE

TYRONE POWER AND ALICE FAYE

"Rose of Washington Square"

WILLIAM PARKER - JOE CONTON
HELEN BRADY

Starts at 2.15 and 8 P.M.

COSW

"HUCKLEBERRY FINN"

ON THE SCREEN

Mickey Rooney Begins Role To

Starts at 2.15 and 8 P.M.

MUNICIPAL THEATRE, NAPIER

TUES, WED, October 24, 25

With INTERNATIONAL VARIETY TROUPE in conjunction with

THE GREAT NORTH CHINA TROUPE

Starts at 2.15 and 8 P.M.

MUNICIPAL THEATRE, NAPIER

TUES, WED, October 24, 25

With INTERNATIONAL VARIETY TROUPE in conjunction with

THE GREAT NORTH CHINA TROUPE

Starts at 2.15 and 8 P.M.

NAPIER THEATRES

MAYFAIR THEATRE

ALL SEATS 1/6

2 P.M. - TO-DAY - 7.45

PERSONS IN HIDING

LEWIS BROOKS - PATRICK HUGHES
JERRY HARRITY

Starts at 2.15 and 8 P.M.

MAYFAIR THEATRE

ALL SEATS 1/6

2 P.M. - TO-DAY - 7.45

PERSONS IN HIDING

LEWIS BROOKS - PATRICK HUGHES
JERRY HARRITY

Starts at 2.15 and 8 P.M.

PLAZA

TO-DAY - ALL SEATS 1/6

TO-NIGHT

2.15 and 8 P.M.

TO-NIGHT

2.15 and 8 P.M.

PLAZA

TO-DAY - ALL SEATS 1/6

TO-NIGHT

2.15 and 8 P.M.

TO-NIGHT

2.15 and 8 P.M.

PLAZA

TO-DAY - ALL SEATS 1/6

TO-NIGHT

2.15 and 8 P.M.

TO-NIGHT

2.15 and 8 P.M.

PLAZA

TO-DAY - ALL SEATS 1/6

TO-NIGHT

2.15 and 8 P.M.

TO-NIGHT

2.15 and 8 P.M.

Mayfair

"PERSONS IN HIDING"

NOW SHOWING

The Second Feature Is
"From Mission"

Starts at 2.15 and 8 P.M.

Mayfair

"PERSONS IN HIDING"

NOW SHOWING

The Second Feature Is
"From Mission"

Starts at 2.15 and 8 P.M.

Mayfair

"PERSONS IN HIDING"

NOW SHOWING

The Second Feature Is
"From Mission"

Starts at 2.15 and 8 P.M.

Mayfair

"PERSONS IN HIDING"

NOW SHOWING

The Second Feature Is
"From Mission"

Starts at 2.15 and 8 P.M.

Mayfair

"PERSONS IN HIDING"

NOW SHOWING

The Second Feature Is
"From Mission"

Starts at 2.15 and 8 P.M.

Mayfair

"PERSONS IN HIDING"

NOW SHOWING

The Second Feature Is
"From Mission"

Starts at 2.15 and 8 P.M.

USED CARS

ARMSTRONG SIDDELEY

A four-door sedan, excellent running, well used, good motor.

Price: £50

AUSTIN 14/6 ASCOT.

New type four door, excellent running. This one has good body trim and higher specification.

Price: £225

BUSINESS AS USUAL. FULL STAFF OF MECHANICS.

THE TOURIST MOTOR CO., LTD.

8, ALEXANDER

CITROEN MOTORS

THEY MUST BE SOLD THIS OPPORTUNITY!

WE HAVE AN OFFER ON A NUMBER OF THESE TOURERS AND ITS YOUNG!

CHEVROLET (Long Springs) BECK (14/6 1/2) FORD (New Beauty) STUDEBAKER

THEY MUST BE SOLD THIS OPPORTUNITY!

WE HAVE AN OFFER ON A NUMBER OF THESE TOURERS AND ITS YOUNG!

CHEVROLET (Long Springs) BECK (14/6 1/2) FORD (New Beauty) STUDEBAKER

AT THE SHOW!

We are showing the Latest Models of -

DODGE

- and -

STANDARD CARS

GOOD SPORT!

Five Year Guarantee

WIN CHESTER

ROCKERS BALL BEARING

WING CHESTER

Five Year Guarantee

INSPECT WILLIAMS & SONS, LTD.

Starts at 2.15 and 8 P.M.

McLeod & Gardner Ltd.

BUILD WITH QUALITY

Starts at 2.15 and 8 P.M.

AT THE H.B. SHOW!

The World's Fattest Girl Reclines!

Plaza

"ONLY ANGELS HAVE WINGS"

Starts at 2.15 and 8 P.M.

McLEOD & GARDNER LTD.

BUILD WITH QUALITY

Starts at 2.15 and 8 P.M.

AT THE SHOW!

CHANG

THE PIN HEAD CHINAMAN

and Marvellous Truans

CHINESE WUNDER WORKERS!

31 Years of Age - Head as big as an orange!

A GREENHALGH & JACKSON ENTERTAINMENT

Starts at 2.15 and 8 P.M.

ORUA WHARO
Southdown Stud

BRED ENTIRELY ON rich, natural pastures. ORUA WHARO Southdowns do well wherever they go, and have earned a name for their hardiness, activity, and good carcass. Solid quality strains have been drawn from the flocks of ELLIS BROOK, Bulks, and Mooren JAMES KNIGHT and W. J. CONNELL. There's no need for Hawke's Bay shippers to go beyond Takapau to buy quality blood for their Southdown flocks.

For Fulllest Information Ring Orua Wharo Station
PHONE 2.5. TAKAPAU

"LOYD GEORGE"
No. 1011 (Vol. XXXI, Welsh Stud Book)
FAMOUS WELSH COB
(Second in Royal Show, England)

AT STUD

Imported by Mr. D. D. Stewart at considerable expense, this stallion is an acquisition to breeders throughout New Zealand, being the best of his breed yet imported.
Sire: GWENNO WELSH PLYER (No. 1333)
Dam: OAKFORD BLACK BESS (No. 9022, Vol. XXXI) by Othello Welsh Carmel (No. 771).
FEE: £8/8/-, Carries Government remount subsidy of \$4 for approved mares.
A limited number of cases will be taken who are not eligible for the remount subsidy.

D. D. STEWART
Sandy Creek, Tutira, H.B.

"OAKLEA"

Southdown Stud

Founded 1923 with best available stock, concentrated on Ella Bros' (Kiltearnon) rams. The splendid "Kiltearnon" sire in the illustration indicates the quality of the stud to-day. The flock is at present headed by a recent purchase.



One of world's finest priced rams, shown, and he is the image of his sire.

The property of
C. R. EDGECOMBE
HATUMA 'PHONE 59M

"PUNAWAI"
ROMNEY STUD

Founded on the famous "Punawai" flock of the William Perry and "Waterpiper" flock of Mr. E. W. Matthews, the "Punawai" Romney Stud is shown and reared under entirely natural conditions, 800 feet above sea level.

First prizes at the 1933 Royal Show at Timaru were awarded to this stud for the local Romney Hogget for Hawke's Bay, and 30 months and upwards, natural condition.

C. H. St. HILL
"Punawai," Takapau

"PIHAUTEA" ROMNEYS

OF OUTSTANDING QUALITY

Established for Over 70 Years.

BRED UNDER ENTIRELY NATURAL CONDITIONS



The Pihautea Stud was founded nearly three decades ago, and is one of the most profitable ones of the eastern and largest Romney flocks in New Zealand today. Pasture clients who have used these rams for 25 years and over testify that they are the best and most reliable. Pure line sires in stock are available. For more details, write to the Pihautea Stud, P.O. Box 100, Napier, always open the South Island Post.

603 Rams from "Pihautea" delivered to regular clients last season.
Postal Address: J. CARNE REDWELL,
"Pihautea," Pukekohe.

"MATAPIHI" Aberdeen Angus Stud

CONTAINS THE CHOICEST STRAINS OF BLOOD FEEDABLE IN THE DOMINION AND HAS SUPPLIED MANY CHAMPIONS.

Matapihi cattle are not only bred the right way, but also have constitution and conformation, with good heads and handling qualities.

A well-known overseas judge and breeder placed Matapihi that he saw in this stud as the best that had been in the Dominion.

"Matapihi" stock have played their part in building up the quality of some of the leading Aberdeen-Angus studs in New Zealand.

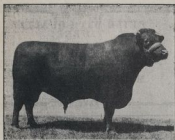
Further particulars from

MRS E. MAY

PRIVATE BAG, WAIPAWA, HAWKE'S BAY



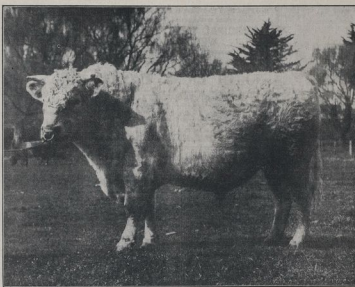
This typical "Matapihi" siren, with calf at foot, indicates the all-round qualities of the stock from this stud.



VINDICTIVE OF STONELAND (Imp.), Second Prize-winner at English Royal Show, England Royal Champion, winner "Steel and Wool" Cup at Wanganui.

"TE PUNA"
SHORTHORNS

The Home of Notable Imported Shorthorn Sires



MARSHION OF TE PUNA, Source Royal Champion Shorthorn Bull 1937, also Champion of Hawke's Bay and Wanganui, and winner of the "Steel and Wool" Cup 1937.

At the Hawke's Bay Show next week "Te Puna's" team will include two splendid yearlings—a bull and a heifer—by our latest importation, BARUGH GOLDEN STAR, out of heifer sired by Vindictive of Stoneland (Imp.).

WHAT SMITHFIELD THINKS:

Making their awards in the world record chilled beef class of 84 entries in the Hawke's Bay Autumn Show the English judges placed Shorthorn entries first, Shorthorn cross second and third.

Shorthorns are most prepotent sires and when crossed with other breeds leave the best points of the breed indelibly marked upon their offspring.

Critics hail "Te Puna" sires as the required breeding type to enable New Zealand to favourably compete with the Argentine.

"Te Puna" Shorthorns are the true Scottish type and are ideally suited for the breeding of beef cattle most suitable for the freezing trade.

At leading sales in the Old Country Shorthorns are realising three times the value of those obtained for the most popular of other beef breeds.

Shorthorns are by far the most popular breed in the Argentine, New Zealand's chief competitor in the beef trade. In that country it is a matter of obtaining the best blood, regardless of cost.

Mr H. D. Greenwood, who has just returned from the Argentine states: "The cattle were magnificent. Most of them were Shorthorns. Nearly all were Red Shorthorns, of which there are thousands all over the country."

The "TE PUNA" Herd
IS
REGULARLY TESTED
FOR T.B.



CLIPPED BY TE PUNA. By Vindictive of Stoneland (Imp.), 1938 Royal Champion, also winner of "Steel and Wool" Cup at Wanganui last year.

VINDICTIVE
IS LEAVING
OUTSTANDING STOCK
IN THE STUD

THE TRUE FREEZING TYPE

UNEXCELLED FOR CROSSING, "TE PUNA" IS BREEDING MANY CHAMPIONS AND PRIZEWINNERS

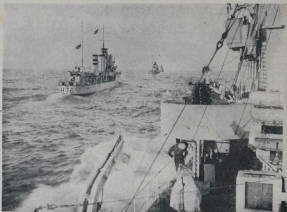
D. J. HOLDEN, Mangateretere, Hastings, Hawke's Bay



THE DOMINION'S LEADING BOREREN—An interesting photo taken at Hastings of the well-known borer, W. J. Brougham (19th from left), B. H. Brown, P. Adams, J. Foran, T. Green and D. T. Turner.



FOR OF THE U-BOATS—A depth charge exploding behind a British destroyer—according to the views of U-boat prisoners. The searchlight beam is aimed at depth charge patterns. The search of the crew is quickly effected.



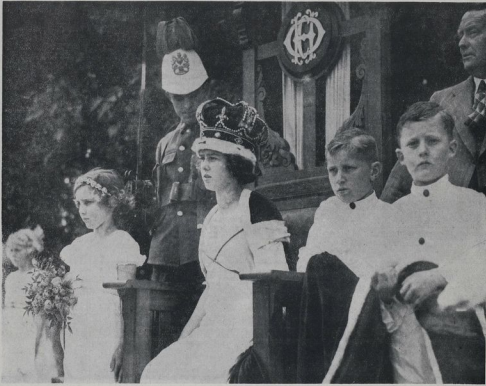
GERYHOUS OF THE WAVY—A flotilla of British destroyers attacking an formation in the Atlantic. Destroyers today form the main units in convoy service.



SEVENTY YEARS PROGRESS—An chairman of the Hawke's Bay Education Board, Mr G. A. Maddison, Hastings, was a guest at the diamond jubilee celebration of the Civic District School yesterday. In his address Mr Maddison said that every effort was being made to have a new school building erected at Clive.



PEOPLE OF ANOTHER DAY—Several hundred people, former pupils of the Clive District school, participated in the diamond jubilee celebration of the school, which was held yesterday. The photograph shows a section of the crowd at the opening ceremony.



A QUEEN IS CROWNED—With due pomp and ceremony Miss Greta Foster was crowned "Queen of Clive" at yesterday's diamond jubilee celebration of the Civic District school.

FIRM PRICES STILL RULING

Report on Poultry Rates at Market Sale

Prices for poultry were firm and steady at the market sale yesterday. The following rates were obtained:

Large commercial turkeys, 10 to 12 lbs., 4s. 6d. to 5s. 0d.; 12 to 14 lbs., 5s. 0d. to 5s. 6d.; 14 to 16 lbs., 5s. 6d. to 6s. 0d.; 16 to 18 lbs., 6s. 0d. to 6s. 6d.; 18 to 20 lbs., 6s. 6d. to 7s. 0d.; 20 to 22 lbs., 7s. 0d. to 7s. 6d.; 22 to 24 lbs., 7s. 6d. to 8s. 0d.; 24 to 26 lbs., 8s. 0d. to 8s. 6d.; 26 to 28 lbs., 8s. 6d. to 9s. 0d.; 28 to 30 lbs., 9s. 0d. to 9s. 6d.; 30 to 32 lbs., 9s. 6d. to 10s. 0d.; 32 to 34 lbs., 10s. 0d. to 10s. 6d.; 34 to 36 lbs., 10s. 6d. to 11s. 0d.; 36 to 38 lbs., 11s. 0d. to 11s. 6d.; 38 to 40 lbs., 11s. 6d. to 12s. 0d.; 40 to 42 lbs., 12s. 0d. to 12s. 6d.; 42 to 44 lbs., 12s. 6d. to 13s. 0d.; 44 to 46 lbs., 13s. 0d. to 13s. 6d.; 46 to 48 lbs., 13s. 6d. to 14s. 0d.; 48 to 50 lbs., 14s. 0d. to 14s. 6d.; 50 to 52 lbs., 14s. 6d. to 15s. 0d.; 52 to 54 lbs., 15s. 0d. to 15s. 6d.; 54 to 56 lbs., 15s. 6d. to 16s. 0d.; 56 to 58 lbs., 16s. 0d. to 16s. 6d.; 58 to 60 lbs., 16s. 6d. to 17s. 0d.; 60 to 62 lbs., 17s. 0d. to 17s. 6d.; 62 to 64 lbs., 17s. 6d. to 18s. 0d.; 64 to 66 lbs., 18s. 0d. to 18s. 6d.; 66 to 68 lbs., 18s. 6d. to 19s. 0d.; 68 to 70 lbs., 19s. 0d. to 19s. 6d.; 70 to 72 lbs., 19s. 6d. to 20s. 0d.; 72 to 74 lbs., 20s. 0d. to 20s. 6d.; 74 to 76 lbs., 20s. 6d. to 21s. 0d.; 76 to 78 lbs., 21s. 0d. to 21s. 6d.; 78 to 80 lbs., 21s. 6d. to 22s. 0d.; 80 to 82 lbs., 22s. 0d. to 22s. 6d.; 82 to 84 lbs., 22s. 6d. to 23s. 0d.; 84 to 86 lbs., 23s. 0d. to 23s. 6d.; 86 to 88 lbs., 23s. 6d. to 24s. 0d.; 88 to 90 lbs., 24s. 0d. to 24s. 6d.; 90 to 92 lbs., 24s. 6d. to 25s. 0d.; 92 to 94 lbs., 25s. 0d. to 25s. 6d.; 94 to 96 lbs., 25s. 6d. to 26s. 0d.; 96 to 98 lbs., 26s. 0d. to 26s. 6d.; 98 to 100 lbs., 26s. 6d. to 27s. 0d.

Small commercial turkeys, 10 to 12 lbs., 4s. 0d. to 4s. 6d.; 12 to 14 lbs., 4s. 6d. to 5s. 0d.; 14 to 16 lbs., 5s. 0d. to 5s. 6d.; 16 to 18 lbs., 5s. 6d. to 6s. 0d.; 18 to 20 lbs., 6s. 0d. to 6s. 6d.; 20 to 22 lbs., 6s. 6d. to 7s. 0d.; 22 to 24 lbs., 7s. 0d. to 7s. 6d.; 24 to 26 lbs., 7s. 6d. to 8s. 0d.; 26 to 28 lbs., 8s. 0d. to 8s. 6d.; 28 to 30 lbs., 8s. 6d. to 9s. 0d.; 30 to 32 lbs., 9s. 0d. to 9s. 6d.; 32 to 34 lbs., 9s. 6d. to 10s. 0d.; 34 to 36 lbs., 10s. 0d. to 10s. 6d.; 36 to 38 lbs., 10s. 6d. to 11s. 0d.; 38 to 40 lbs., 11s. 0d. to 11s. 6d.; 40 to 42 lbs., 11s. 6d. to 12s. 0d.; 42 to 44 lbs., 12s. 0d. to 12s. 6d.; 44 to 46 lbs., 12s. 6d. to 13s. 0d.; 46 to 48 lbs., 13s. 0d. to 13s. 6d.; 48 to 50 lbs., 13s. 6d. to 14s. 0d.; 50 to 52 lbs., 14s. 0d. to 14s. 6d.; 52 to 54 lbs., 14s. 6d. to 15s. 0d.; 54 to 56 lbs., 15s. 0d. to 15s. 6d.; 56 to 58 lbs., 15s. 6d. to 16s. 0d.; 58 to 60 lbs., 16s. 0d. to 16s. 6d.; 60 to 62 lbs., 16s. 6d. to 17s. 0d.; 62 to 64 lbs., 17s. 0d. to 17s. 6d.; 64 to 66 lbs., 17s. 6d. to 18s. 0d.; 66 to 68 lbs., 18s. 0d. to 18s. 6d.; 68 to 70 lbs., 18s. 6d. to 19s. 0d.; 70 to 72 lbs., 19s. 0d. to 19s. 6d.; 72 to 74 lbs., 19s. 6d. to 20s. 0d.; 74 to 76 lbs., 20s. 0d. to 20s. 6d.; 76 to 78 lbs., 20s. 6d. to 21s. 0d.; 78 to 80 lbs., 21s. 0d. to 21s. 6d.; 80 to 82 lbs., 21s. 6d. to 22s. 0d.; 82 to 84 lbs., 22s. 0d. to 22s. 6d.; 84 to 86 lbs., 22s. 6d. to 23s. 0d.; 86 to 88 lbs., 23s. 0d. to 23s. 6d.; 88 to 90 lbs., 23s. 6d. to 24s. 0d.; 90 to 92 lbs., 24s. 0d. to 24s. 6d.; 92 to 94 lbs., 24s. 6d. to 25s. 0d.; 94 to 96 lbs., 25s. 0d. to 25s. 6d.; 96 to 98 lbs., 25s. 6d. to 26s. 0d.; 98 to 100 lbs., 26s. 0d. to 26s. 6d.

Broilers, 10 to 12 lbs., 3s. 0d. to 3s. 6d.; 12 to 14 lbs., 3s. 6d. to 4s. 0d.; 14 to 16 lbs., 4s. 0d. to 4s. 6d.; 16 to 18 lbs., 4s. 6d. to 5s. 0d.; 18 to 20 lbs., 5s. 0d. to 5s. 6d.; 20 to 22 lbs., 5s. 6d. to 6s. 0d.; 22 to 24 lbs., 6s. 0d. to 6s. 6d.; 24 to 26 lbs., 6s. 6d. to 7s. 0d.; 26 to 28 lbs., 7s. 0d. to 7s. 6d.; 28 to 30 lbs., 7s. 6d. to 8s. 0d.; 30 to 32 lbs., 8s. 0d. to 8s. 6d.; 32 to 34 lbs., 8s. 6d. to 9s. 0d.; 34 to 36 lbs., 9s. 0d. to 9s. 6d.; 36 to 38 lbs., 9s. 6d. to 10s. 0d.; 38 to 40 lbs., 10s. 0d. to 10s. 6d.; 40 to 42 lbs., 10s. 6d. to 11s. 0d.; 42 to 44 lbs., 11s. 0d. to 11s. 6d.; 44 to 46 lbs., 11s. 6d. to 12s. 0d.; 46 to 48 lbs., 12s. 0d. to 12s. 6d.; 48 to 50 lbs., 12s. 6d. to 13s. 0d.; 50 to 52 lbs., 13s. 0d. to 13s. 6d.; 52 to 54 lbs., 13s. 6d. to 14s. 0d.; 54 to 56 lbs., 14s. 0d. to 14s. 6d.; 56 to 58 lbs., 14s. 6d. to 15s. 0d.; 58 to 60 lbs., 15s. 0d. to 15s. 6d.; 60 to 62 lbs., 15s. 6d. to 16s. 0d.; 62 to 64 lbs., 16s. 0d. to 16s. 6d.; 64 to 66 lbs., 16s. 6d. to 17s. 0d.; 66 to 68 lbs., 17s. 0d. to 17s. 6d.; 68 to 70 lbs., 17s. 6d. to 18s. 0d.; 70 to 72 lbs., 18s. 0d. to 18s. 6d.; 72 to 74 lbs., 18s. 6d. to 19s. 0d.; 74 to 76 lbs., 19s. 0d. to 19s. 6d.; 76 to 78 lbs., 19s. 6d. to 20s. 0d.; 78 to 80 lbs., 20s. 0d. to 20s. 6d.; 80 to 82 lbs., 20s. 6d. to 21s. 0d.; 82 to 84 lbs., 21s. 0d. to 21s. 6d.; 84 to 86 lbs., 21s. 6d. to 22s. 0d.; 86 to 88 lbs., 22s. 0d. to 22s. 6d.; 88 to 90 lbs., 22s. 6d. to 23s. 0d.; 90 to 92 lbs., 23s. 0d. to 23s. 6d.; 92 to 94 lbs., 23s. 6d. to 24s. 0d.; 94 to 96 lbs., 24s. 0d. to 24s. 6d.; 96 to 98 lbs., 24s. 6d. to 25s. 0d.; 98 to 100 lbs., 25s. 0d. to 25s. 6d.

Chickens, 10 to 12 lbs., 3s. 0d. to 3s. 6d.; 12 to 14 lbs., 3s. 6d. to 4s. 0d.; 14 to 16 lbs., 4s. 0d. to 4s. 6d.; 16 to 18 lbs., 4s. 6d. to 5s. 0d.; 18 to 20 lbs., 5s. 0d. to 5s. 6d.; 20 to 22 lbs., 5s. 6d. to 6s. 0d.; 22 to 24 lbs., 6s. 0d. to 6s. 6d.; 24 to 26 lbs., 6s. 6d. to 7s. 0d.; 26 to 28 lbs., 7s. 0d. to 7s. 6d.; 28 to 30 lbs., 7s. 6d. to 8s. 0d.; 30 to 32 lbs., 8s. 0d. to 8s. 6d.; 32 to 34 lbs., 8s. 6d. to 9s. 0d.; 34 to 36 lbs., 9s. 0d. to 9s. 6d.; 36 to 38 lbs., 9s. 6d. to 10s. 0d.; 38 to 40 lbs., 10s. 0d. to 10s. 6d.; 40 to 42 lbs., 10s. 6d. to 11s. 0d.; 42 to 44 lbs., 11s. 0d. to 11s. 6d.; 44 to 46 lbs., 11s. 6d. to 12s. 0d.; 46 to 48 lbs., 12s. 0d. to 12s. 6d.; 48 to 50 lbs., 12s. 6d. to 13s. 0d.; 50 to 52 lbs., 13s. 0d. to 13s. 6d.; 52 to 54 lbs., 13s. 6d. to 14s. 0d.; 54 to 56 lbs., 14s. 0d. to 14s. 6d.; 56 to 58 lbs., 14s. 6d. to 15s. 0d.; 58 to 60 lbs., 15s. 0d. to 15s. 6d.; 60 to 62 lbs., 15s. 6d. to 16s. 0d.; 62 to 64 lbs., 16s. 0d. to 16s. 6d.; 64 to 66 lbs., 16s. 6d. to 17s. 0d.; 66 to 68 lbs., 17s. 0d. to 17s. 6d.; 68 to 70 lbs., 17s. 6d. to 18s. 0d.; 70 to 72 lbs., 18s. 0d. to 18s. 6d.; 72 to 74 lbs., 18s. 6d. to 19s. 0d.; 74 to 76 lbs., 19s. 0d. to 19s. 6d.; 76 to 78 lbs., 19s. 6d. to 20s. 0d.; 78 to 80 lbs., 20s. 0d. to 20s. 6d.; 80 to 82 lbs., 20s. 6d. to 21s. 0d.; 82 to 84 lbs., 21s. 0d. to 21s. 6d.; 84 to 86 lbs., 21s. 6d. to 22s. 0d.; 86 to 88 lbs., 22s. 0d. to 22s. 6d.; 88 to 90 lbs., 22s. 6d. to 23s. 0d.; 90 to 92 lbs., 23s. 0d. to 23s. 6d.; 92 to 94 lbs., 23s. 6d. to 24s. 0d.; 94 to 96 lbs., 24s. 0d. to 24s. 6d.; 96 to 98 lbs., 24s. 6d. to 25s. 0d.; 98 to 100 lbs., 25s. 0d. to 25s. 6d.

Geese, 10 to 12 lbs., 4s. 0d. to 4s. 6d.; 12 to 14 lbs., 4s. 6d. to 5s. 0d.; 14 to 16 lbs., 5s. 0d. to 5s. 6d.; 16 to 18 lbs., 5s. 6d. to 6s. 0d.; 18 to 20 lbs., 6s. 0d. to 6s. 6d.; 20 to 22 lbs., 6s. 6d. to 7s. 0d.; 22 to 24 lbs., 7s. 0d. to 7s. 6d.; 24 to 26 lbs., 7s. 6d. to 8s. 0d.; 26 to 28 lbs., 8s. 0d. to 8s. 6d.; 28 to 30 lbs., 8s. 6d. to 9s. 0d.; 30 to 32 lbs., 9s. 0d. to 9s. 6d.; 32 to 34 lbs., 9s. 6d. to 10s. 0d.; 34 to 36 lbs., 10s. 0d. to 10s. 6d.; 36 to 38 lbs., 10s. 6d. to 11s. 0d.; 38 to 40 lbs., 11s. 0d. to 11s. 6d.; 40 to 42 lbs., 11s. 6d. to 12s. 0d.; 42 to 44 lbs., 12s. 0d. to 12s. 6d.; 44 to 46 lbs., 12s. 6d. to 13s. 0d.; 46 to 48 lbs., 13s. 0d. to 13s. 6d.; 48 to 50 lbs., 13s. 6d. to 14s. 0d.; 50 to 52 lbs., 14s. 0d. to 14s. 6d.; 52 to 54 lbs., 14s. 6d. to 15s. 0d.; 54 to 56 lbs., 15s. 0d. to 15s. 6d.; 56 to 58 lbs., 15s. 6d. to 16s. 0d.; 58 to 60 lbs., 16s. 0d. to 16s. 6d.; 60 to 62 lbs., 16s. 6d. to 17s. 0d.; 62 to 64 lbs., 17s. 0d. to 17s. 6d.; 64 to 66 lbs., 17s. 6d. to 18s. 0d.; 66 to 68 lbs., 18s. 0d. to 18s. 6d.; 68 to 70 lbs., 18s. 6d. to 19s. 0d.; 70 to 72 lbs., 19s. 0d. to 19s. 6d.; 72 to 74 lbs., 19s. 6d. to 20s. 0d.; 74 to 76 lbs., 20s. 0d. to 20s. 6d.; 76 to 78 lbs., 20s. 6d. to 21s. 0d.; 78 to 80 lbs., 21s. 0d. to 21s. 6d.; 80 to 82 lbs., 21s. 6d. to 22s. 0d.; 82 to 84 lbs., 22s. 0d. to 22s. 6d.; 84 to 86 lbs., 22s. 6d. to 23s. 0d.; 86 to 88 lbs., 23s. 0d. to 23s. 6d.; 88 to 90 lbs., 23s. 6d. to 24s. 0d.; 90 to 92 lbs., 24s. 0d. to 24s. 6d.; 92 to 94 lbs., 24s. 6d. to 25s. 0d.; 94 to 96 lbs., 25s. 0d. to 25s. 6d.; 96 to 98 lbs., 25s. 6d. to 26s. 0d.; 98 to 100 lbs., 26s. 0d. to 26s. 6d.

Ducks, 10 to 12 lbs., 3s. 0d. to 3s. 6d.; 12 to 14 lbs., 3s. 6d. to 4s. 0d.; 14 to 16 lbs., 4s. 0d. to 4s. 6d.; 16 to 18 lbs., 4s. 6d. to 5s. 0d.; 18 to 20 lbs., 5s. 0d. to 5s. 6d.; 20 to 22 lbs., 5s. 6d. to 6s. 0d.; 22 to 24 lbs., 6s. 0d. to 6s. 6d.; 24 to 26 lbs., 6s. 6d. to 7s. 0d.; 26 to 28 lbs., 7s. 0d. to 7s. 6d.; 28 to 30 lbs., 7s. 6d. to 8s. 0d.; 30 to 32 lbs., 8s. 0d. to 8s. 6d.; 32 to 34 lbs., 8s. 6d. to 9s. 0d.; 34 to 36 lbs., 9s. 0d. to 9s. 6d.; 36 to 38 lbs., 9s. 6d. to 10s. 0d.; 38 to 40 lbs., 10s. 0d. to 10s. 6d.; 40 to 42 lbs., 10s. 6d. to 11s. 0d.; 42 to 44 lbs., 11s. 0d. to 11s. 6d.; 44 to 46 lbs., 11s. 6d. to 12s. 0d.; 46 to 48 lbs., 12s. 0d. to 12s. 6d.; 48 to 50 lbs., 12s. 6d. to 13s. 0d.; 50 to 52 lbs., 13s. 0d. to 13s. 6d.; 52 to 54 lbs., 13s. 6d. to 14s. 0d.; 54 to 56 lbs., 14s. 0d. to 14s. 6d.; 56 to 58 lbs., 14s. 6d. to 15s. 0d.; 58 to 60 lbs., 15s. 0d. to 15s. 6d.; 60 to 62 lbs., 15s. 6d. to 16s. 0d.; 62 to 64 lbs., 16s. 0d. to 16s. 6d.; 64 to 66 lbs., 16s. 6d. to 17s. 0d.; 66 to 68 lbs., 17s. 0d. to 17s. 6d.; 68 to 70 lbs., 17s. 6d. to 18s. 0d.; 70 to 72 lbs., 18s. 0d. to 18s. 6d.; 72 to 74 lbs., 18s. 6d. to 19s. 0d.; 74 to 76 lbs., 19s. 0d. to 19s. 6d.; 76 to 78 lbs., 19s. 6d. to 20s. 0d.; 78 to 80 lbs., 20s. 0d. to 20s. 6d.; 80 to 82 lbs., 20s. 6d. to 21s. 0d.; 82 to 84 lbs., 21s. 0d. to 21s. 6d.; 84 to 86 lbs., 21s. 6d. to 22s. 0d.; 86 to 88 lbs., 22s. 0d. to 22s. 6d.; 88 to 90 lbs., 22s. 6d. to 23s. 0d.; 90 to 92 lbs., 23s. 0d. to 23s. 6d.; 92 to 94 lbs., 23s. 6d. to 24s. 0d.; 94 to 96 lbs., 24s. 0d. to 24s. 6d.; 96 to 98 lbs., 24s. 6d. to 25s. 0d.; 98 to 100 lbs., 25s. 0d. to 25s. 6d.

Competition kept for sheep

Brokers' Report on Sale at Dannevirke

Wool, 10 to 12 lbs., 4s. 0d. to 4s. 6d.; 12 to 14 lbs., 4s. 6d. to 5s. 0d.; 14 to 16 lbs., 5s. 0d. to 5s. 6d.; 16 to 18 lbs., 5s. 6d. to 6s. 0d.; 18 to 20 lbs., 6s. 0d. to 6s. 6d.; 20 to 22 lbs., 6s. 6d. to 7s. 0d.; 22 to 24 lbs., 7s. 0d. to 7s. 6d.; 24 to 26 lbs., 7s. 6d. to 8s. 0d.; 26 to 28 lbs., 8s. 0d. to 8s. 6d.; 28 to 30 lbs., 8s. 6d. to 9s. 0d.; 30 to 32 lbs., 9s. 0d. to 9s. 6d.; 32 to 34 lbs., 9s. 6d. to 10s. 0d.; 34 to 36 lbs., 10s. 0d. to 10s. 6d.; 36 to 38 lbs., 10s. 6d. to 11s. 0d.; 38 to 40 lbs., 11s. 0d. to 11s. 6d.; 40 to 42 lbs., 11s. 6d. to 12s. 0d.; 42 to 44 lbs., 12s. 0d. to 12s. 6d.; 44 to 46 lbs., 12s. 6d. to 13s. 0d.; 46 to 48 lbs., 13s. 0d. to 13s. 6d.; 48 to 50 lbs., 13s. 6d. to 14s. 0d.; 50 to 52 lbs., 14s. 0d. to 14s. 6d.; 52 to 54 lbs., 14s. 6d. to 15s. 0d.; 54 to 56 lbs., 15s. 0d. to 15s. 6d.; 56 to 58 lbs., 15s. 6d. to 16s. 0d.; 58 to 60 lbs., 16s. 0d. to 16s. 6d.; 60 to 62 lbs., 16s. 6d. to 17s. 0d.; 62 to 64 lbs., 17s. 0d. to 17s. 6d.; 64 to 66 lbs., 17s. 6d. to 18s. 0d.; 66 to 68 lbs., 18s. 0d. to 18s. 6d.; 68 to 70 lbs., 18s. 6d. to 19s. 0d.; 70 to 72 lbs., 19s. 0d. to 19s. 6d.; 72 to 74 lbs., 19s. 6d. to 20s. 0d.; 74 to 76 lbs., 20s. 0d. to 20s. 6d.; 76 to 78 lbs., 20s. 6d. to 21s. 0d.; 78 to 80 lbs., 21s. 0d. to 21s. 6d.; 80 to 82 lbs., 21s. 6d. to 22s. 0d.; 82 to 84 lbs., 22s. 0d. to 22s. 6d.; 84 to 86 lbs., 22s. 6d. to 23s. 0d.; 86 to 88 lbs., 23s. 0d. to 23s. 6d.; 88 to 90 lbs., 23s. 6d. to 24s. 0d.; 90 to 92 lbs., 24s. 0d. to 24s. 6d.; 92 to 94 lbs., 24s. 6d. to 25s. 0d.; 94 to 96 lbs., 25s. 0d. to 25s. 6d.; 96 to 98 lbs., 25s. 6d. to 26s. 0d.; 98 to 100 lbs., 26s. 0d. to 26s. 6d.

BEST IN TWELVE MONTHS

GOOD CATTLE FAIR AT WAIROA

KEEN DEMAND

Pronounced Improvement in the Market

"Daily Mail" Waikato Service

Waikato, N.Z., October 13.—A large number of sheep were sold at the Waikato Cattle Fair yesterday. The market showed a pronounced improvement in prices, especially in the case of the heavy wethers. The following are the rates obtained:

Large wethers, 10 to 12 lbs., 4s. 0d. to 4s. 6d.; 12 to 14 lbs., 4s. 6d. to 5s. 0d.; 14 to 16 lbs., 5s. 0d. to 5s. 6d.; 16 to 18 lbs., 5s. 6d. to 6s. 0d.; 18 to 20 lbs., 6s. 0d. to 6s. 6d.; 20 to 22 lbs., 6s. 6d. to 7s. 0d.; 22 to 24 lbs., 7s. 0d. to 7s. 6d.; 24 to 26 lbs., 7s. 6d. to 8s. 0d.; 26 to 28 lbs., 8s. 0d. to 8s. 6d.; 28 to 30 lbs., 8s. 6d. to 9s. 0d.; 30 to 32 lbs., 9s. 0d. to 9s. 6d.; 32 to 34 lbs., 9s. 6d. to 10s. 0d.; 34 to 36 lbs., 10s. 0d. to 10s. 6d.; 36 to 38 lbs., 10s. 6d. to 11s. 0d.; 38 to 40 lbs., 11s. 0d. to 11s. 6d.; 40 to 42 lbs., 11s. 6d. to 12s. 0d.; 42 to 44 lbs., 12s. 0d. to 12s. 6d.; 44 to 46 lbs., 12s. 6d. to 13s. 0d.; 46 to 48 lbs., 13s. 0d. to 13s. 6d.; 48 to 50 lbs., 13s. 6d. to 14s. 0d.; 50 to 52 lbs., 14s. 0d. to 14s. 6d.; 52 to 54 lbs., 14s. 6d. to 15s. 0d.; 54 to 56 lbs., 15s. 0d. to 15s. 6d.; 56 to 58 lbs., 15s. 6d. to 16s. 0d.; 58 to 60 lbs., 16s. 0d. to 16s. 6d.; 60 to 62 lbs., 16s. 6d. to 17s. 0d.; 62 to 64 lbs., 17s. 0d. to 17s. 6d.; 64 to 66 lbs., 17s. 6d. to 18s. 0d.; 66 to 68 lbs., 18s. 0d. to 18s. 6d.; 68 to 70 lbs., 18s. 6d. to 19s. 0d.; 70 to 72 lbs., 19s. 0d. to 19s. 6d.; 72 to 74 lbs., 19s. 6d. to 20s. 0d.; 74 to 76 lbs., 20s. 0d. to 20s. 6d.; 76 to 78 lbs., 20s. 6d. to 21s. 0d.; 78 to 80 lbs., 21s. 0d. to 21s. 6d.; 80 to 82 lbs., 21s. 6d. to 22s. 0d.; 82 to 84 lbs., 22s. 0d. to 22s. 6d.; 84 to 86 lbs., 22s. 6d. to 23s. 0d.; 86 to 88 lbs., 23s. 0d. to 23s. 6d.; 88 to 90 lbs., 23s. 6d. to 24s. 0d.; 90 to 92 lbs., 24s. 0d. to 24s. 6d.; 92 to 94 lbs., 24s. 6d. to 25s. 0d.; 94 to 96 lbs., 25s. 0d. to 25s. 6d.; 96 to 98 lbs., 25s. 6d. to 26s. 0d.; 98 to 100 lbs., 26s. 0d. to 26s. 6d.

Small wethers, 10 to 12 lbs., 3s. 0d. to 3s. 6d.; 12 to 14 lbs., 3s. 6d. to 4s. 0d.; 14 to 16 lbs., 4s. 0d. to 4s. 6d.; 16 to 18 lbs., 4s. 6d. to 5s. 0d.; 18 to 20 lbs., 5s. 0d. to 5s. 6d.; 20 to 22 lbs., 5s. 6d. to 6s. 0d.; 22 to 24 lbs., 6s. 0d. to 6s. 6d.; 24 to 26 lbs., 6s. 6d. to 7s. 0d.; 26 to 28 lbs., 7s. 0d. to 7s. 6d.; 28 to 30 lbs., 7s. 6d. to 8s. 0d.; 30 to 32 lbs., 8s. 0d. to 8s. 6d.; 32 to 34 lbs., 8s. 6d. to 9s. 0d.; 34 to 36 lbs., 9s. 0d. to 9s. 6d.; 36 to 38 lbs., 9s. 6d. to 10s. 0d.; 38 to 40 lbs., 10s. 0d. to 10s. 6d.; 40 to 42 lbs., 10s. 6d. to 11s. 0d.; 42 to 44 lbs., 11s. 0d. to 11s. 6d.; 44 to 46 lbs., 11s. 6d. to 12s. 0d.; 46 to 48 lbs., 12s. 0d. to 12s. 6d.; 48 to 50 lbs., 12s. 6d. to 13s. 0d.; 50 to 52 lbs., 13s. 0d. to 13s. 6d.; 52 to 54 lbs., 13s. 6d. to 14s. 0d.; 54 to 56 lbs., 14s. 0d. to 14s. 6d.; 56 to 58 lbs., 14s. 6d. to 15s. 0d.; 58 to 60 lbs., 15s. 0d. to 15s. 6d.; 60 to 62 lbs., 15s. 6d. to 16s. 0d.; 62 to 64 lbs., 16s. 0d. to 16s. 6d.; 64 to 66 lbs., 16s. 6d. to 17s. 0d.; 66 to 68 lbs., 17s. 0d. to 17s. 6d.; 68 to 70 lbs., 17s. 6d. to 18s. 0d.; 70 to 72 lbs., 18s. 0d. to 18s. 6d.; 72 to 74 lbs., 18s. 6d. to 19s. 0d.; 74 to 76 lbs., 19s. 0d. to 19s. 6d.; 76 to 78 lbs., 19s. 6d. to 20s. 0d.; 78 to 80 lbs., 20s. 0d. to 20s. 6d.; 80 to 82 lbs., 20s. 6d. to 21s. 0d.; 82 to 84 lbs., 21s. 0d. to 21s. 6d.; 84 to 86 lbs., 21s. 6d. to 22s. 0d.; 86 to 88 lbs., 22s. 0d. to 22s. 6d.; 88 to 90 lbs., 22s. 6d. to 23s. 0d.; 90 to 92 lbs., 23s. 0d. to 23s. 6d.; 92 to 94 lbs., 23s. 6d. to 24s. 0d.; 94 to 96 lbs., 24s. 0d. to 24s. 6d.; 96 to 98 lbs., 24s. 6d. to 25s. 0d.; 98 to 100 lbs., 25s. 0d. to 25s. 6d.

Calves, 10 to 12 lbs., 4s. 0d

SHIPPING
HUDDART PARKER LINE
TAMU, WANGANUIA
WELLINGTON, HOKIANGA

Shipping At The Port Of Napier
FRIGATE OF THE ROYAL MAIL
TUESDAY, OCTOBER 10, 1939.

UNIVERSAL GARAGES
NAPIER HASTINGS Wairoa
J. E. PEACH & CO. LTD.
THE HOME OF BEST VALUES IN
USED CARS, TRUCKS, and MOTOR-CYCLES.

BUILDING A BETTER
WORLD IS MAN'S TASK
Archdeacon K. E. Maclean Writes
Of The Part To Be Played
By The Individual

ACCIDENT VICTIM'S
DEATH
Mr John Boyd Succumbs
To Injuries
"DAILY MAIL'S"
SPECIAL FORECAST IS
FOR WINDS
WITH HEAVY RAIN.

ORIENT LINE
NORFOLK MAIL STEAMERS
FRIGATE OF THE ROYAL MAIL
TUESDAY, OCTOBER 10, 1939.

ORIENT LINE
NORFOLK MAIL STEAMERS
FRIGATE OF THE ROYAL MAIL
TUESDAY, OCTOBER 10, 1939.

UNIVERSAL GARAGES
NAPIER HASTINGS Wairoa
J. E. PEACH & CO. LTD.
NAPHER HASTINGS Wairoa
UNIVERSAL GARAGES

Personal
LOCAL AND GENERAL
The link to which the Church of
God has been called and which
God has given to it is the
Word of God.

Weather
Haastings Weather
General Forecast
Domestic Situation

SPECIAL EXCURSION PARCELS
CANADIAN AUSTRALIAN LINE
CANADIAN U.S.A. MAIL TRAVEL
TRAVELERS' EXPENSE

COASTAL SHIPPERS AT NAPIER
FRIGATE OF THE ROYAL MAIL
TUESDAY, OCTOBER 10, 1939.

UNIVERSAL GARAGES
NAPIER HASTINGS Wairoa
J. E. PEACH & CO. LTD.
NAPHER HASTINGS Wairoa
UNIVERSAL GARAGES

Personal
LOCAL AND GENERAL
The link to which the Church of
God has been called and which
God has given to it is the
Word of God.

Weather
Haastings Weather
General Forecast
Domestic Situation

UNION STEAM SHIP CO. OF
NEW ZEALAND, LTD.
Shipping
HAWKES BAY MOTOR
COY. LTD.

UNION STEAM SHIP CO. OF
NEW ZEALAND, LTD.
Shipping
HAWKES BAY MOTOR
COY. LTD.

UNIVERSAL GARAGES
NAPIER HASTINGS Wairoa
J. E. PEACH & CO. LTD.
NAPHER HASTINGS Wairoa
UNIVERSAL GARAGES

Personal
LOCAL AND GENERAL
The link to which the Church of
God has been called and which
God has given to it is the
Word of God.

Weather
Haastings Weather
General Forecast
Domestic Situation

"Daily Mail"
PHOTOGRAPHS
Local Photographs appearing in
the newspaper can be ordered
sent to Napier, Hastings or
Hastings.

HAWKES BAY MOTOR
COY. LTD.
NAPHER HASTINGS Wairoa
UNIVERSAL GARAGES

UNIVERSAL GARAGES
NAPIER HASTINGS Wairoa
J. E. PEACH & CO. LTD.
NAPHER HASTINGS Wairoa
UNIVERSAL GARAGES

Personal
LOCAL AND GENERAL
The link to which the Church of
God has been called and which
God has given to it is the
Word of God.

Weather
Haastings Weather
General Forecast
Domestic Situation

"Daily Mail"
PHOTOGRAPHS
Local Photographs appearing in
the newspaper can be ordered
sent to Napier, Hastings or
Hastings.

HAWKES BAY MOTOR
COY. LTD.
NAPHER HASTINGS Wairoa
UNIVERSAL GARAGES

UNIVERSAL GARAGES
NAPIER HASTINGS Wairoa
J. E. PEACH & CO. LTD.
NAPHER HASTINGS Wairoa
UNIVERSAL GARAGES

Personal
LOCAL AND GENERAL
The link to which the Church of
God has been called and which
God has given to it is the
Word of God.

Weather
Haastings Weather
General Forecast
Domestic Situation

CONTROL OF PATRIOTIC FUNDS

National Board And National Council Set Up PROTECTING THE PUBLIC

The Minister said that the representative standing of the members... The National Board and National Council set up to protect the public from the sale of unwholesome and unhygienic foodstuffs.

TROUBLE AT SHANGHAI

INTERFERENCE BY JAPAN BUILDING RAIDED

The Shanghai correspondent of the Associated Press... The Japanese government has been interfering with the building industry in Shanghai.



UNDER RUSSIAN INFLUENCE... The Russian plot in Persia, whose water power the Soviet has been building against world rights.

PRICE OF SUGAR FIXED YEARS SUPPLY IS AVAILABLE NO INCREASE

Arrangements Made By Government... The Government has fixed the price of sugar and guaranteed a supply for several years.

A Foreign Office Revolt

TOKYO FEARS SPREAD One Hundred Employees Offer To Resign... A revolt is brewing in the Foreign Office in London, with one hundred employees offering to resign.

SEARCH FOR RARE SPECIMENS SCIENTIFIC CRUISE OF THE PACIFIC AMERICAN SHIP

Primitive Music To Be Recorded... The United States Government is sending a scientific cruise to the Pacific to search for rare specimens and record primitive music.

Trucks Reduced To Matchwood OTAGO DERAILMENT

Three Hundred Yards Of Track Injured... A derailed train in Otago has resulted in three hundred yards of track being damaged.

SUNKEN TRAWLER SEARCHED NO TRACE FOUND CAPTAIN

INQUIRY OPENS Ship Sank In A Few Minutes... A search is being conducted for a sunken trawler, but no trace of the captain has been found.

AN OBLIGATION ON EMPLOYERS

Jobs to be kept for soldiers... Employers have an obligation to keep jobs open for returning soldiers.

READY TO RELIEVE SUFFERING AMERICAN RED CROSS

CO-ORDINATION IS APPEALED FOR... The American Red Cross is appealing for co-ordination to help suffering people.

An Adventurous Voyage KECH'S RETURN

Loyalty Islands And New Caledonia LONG CRUISE ENDS... A long and adventurous voyage has ended with the return of the ship Ketch.

FREIGHT RATES INCREASED CARGOES BOUND FOR BRITAIN

FIFTY PER CENT UP To Apply At Once On New Loadings... Freight rates for cargo bound for Britain have increased by fifty per cent.

TRAFFIC INSPECTOR WON

An 80 M.P.H. Race AIR FORCE MAN IN COURT... A traffic inspector has won a race, and an air force man is in court.

AVOIDING AMERICAN EMBARGO

Factories In Canada SEPARATE BRITISH EFFORTS... Factories in Canada are avoiding the American embargo by separate British efforts.

FLIGHT FROM FRANCE TO BRAZIL

Two Airmen Land WILL CONTINUE TO BUENOS AIRES... Two airmen have landed in Brazil and will continue their journey to Buenos Aires.

Military Men In Court

CONVERSION OF CAR Breaking Barracks At Wellington... Military men are in court, and a car was converted into a barracks.

BROTHER LIVES IN WAIPUKURU

Mr. H. Brasel Leaves For The South... Brother lives in Waipukurau, and Mr. H. Brasel has left for the south.

Points System For Cricket CHANGE ADOPTED

Canterbury Method Of Counting... A points system for cricket has been adopted, and the Canterbury method of counting is used.

WOOL NEGOTIATIONS WITH U.K. NEAR END

Regulations To Provide For Purchasing By N.Z. Government

The Minister of Agriculture... Regulations to provide for purchasing wool by the New Zealand government are being finalized.

Famous Murder Recalled

MUSEUM EXHIBITS Picture Reconstruction At Napier... A famous murder is recalled through museum exhibits and a picture reconstruction at Napier.

SPRING SHOW NEAR AT HAND RECORD NUMBERS OF EXHIBITS

ALL IS READY Excursion Train From Wairoa... Preparations for the Spring Show are well advanced, and an excursion train is being organized from Wairoa.

Central School Activities

HASTINGS COMMITTEE MEETS NEW SPORTS GEAR... The Hastings committee has met, and new sports gear has been ordered.

Church Congress Proposed

A Family Party Waipua Diocese... A church congress is proposed, and a family party is being organized in the Waipua diocese.

WALTON, OCT. 13.

Details of procedure were still under discussion... The details of the wool negotiations are still being discussed.

WALTON, OCT. 13.

With their eyes on previous years' record... The wool negotiations are being viewed in the context of previous years' records.

WALTON, OCT. 13.

After a general meeting of the New Zealand Wool Growers' Association... A general meeting of the wool growers' association was held.

WALTON, OCT. 13.

Mr. H. Brasel leaves for the South... Mr. H. Brasel is leaving for the south.

