





HASTINGS THEATRES

LAST DAY SAMUEL GOLDWYN presents HEIFETZ AND HIS PHILHARMONIC ORCHESTRA "THEY SHALL HAVE MUSIC!"

DAILY At 2.15 & 8 p.m. DEAF AIDS THROUGHOUT Theatres Ltd. HASTINGS LEADING THEATRE Telephone 2674

TO-MORROW HENRY FONDA - ALICE BRADY - MARJORIE WEAVER - ARLEEN WHELAN - EDDIE COLLINS - PAULINE MOORE in "YOUNG MR LINCOLN" ... "LIGHTNING CONDUCTOR" with SALLY GRAY

COSY EVENING At 7.45 The Home of Good Entertainment. "THE RUTHLESS NAZI PURGE" "Professor Mamlock"

ADOLPH HITLER every New Zealander who values love and freedom should see this true story of the Nazi Terrorism!

FINALLY TO-DAY - At 2.15 & 8 p.m. JEANETTE MacDONALD "Broadway Serenade"

MUNICIPAL PICTURES TO-NIGHT 7.45 (THE FAMILY HOUSE FOR VALUE) TO-NIGHT 7.45 "THE SECRET OF STAMBOUL"

Municipal "STREET SINGER'S RETURN" With "The Secret Of Stamboul"

"Street Singer's Serenade" will be remembered as a glorious modern musical romance, punctuated with many delightful song hits.

State "YOUNG MR LINCOLN" TO-MORROW "Lightning Conductor" is Second Feature

Henry Fonda gives his greatest performance in the title role of Darryl F. Zanuck's production of "Young Mr. Lincoln," which comes to the State Theatre, Hastings, to-morrow.

The narration is dominated by comedy angles of 'bus travel incident involving joyous Cockney backchat with varied line-up of passengers.

Cosy THE RUTHLESS NAZI PURGE "Professor Mamlock" is Great Drama

The brutal tyranny of the Nazi regime has never been more clearly or more forcefully revealed than in the film, "Professor Mamlock."

The ignominy suffered by the Jews is vividly shown. From this excellent idea can be gained of the tortures members of the race have undergone.

A FIRST INNINGS WIN FOR FLAXMERE Friendly Game With The Napier Gas Company

Flaxmere defeated Napier Gas Co. by 118 runs on the first innings in a friendly match played at Flaxmere during the week-end.

NAPIER THEATRES

"ALWAYS A BETTER SHOW" Hearing Aids Available Air-Conditioned MATINEE TO-DAY at 2.15 FINALLY TO-NIGHT 7.45

GRACIE FIELDS "SHIPYARD SALLY"

"FOLLOW YOUR STAR" IN ADDITION HENRY FONDA in "YOUNG MR LINCOLN"

CHARLES LAUGHTON ... actor ELSA LANCHESTER ... actress W. SOMERSET MAUGHAM ... author ERICH FOMMER ... producer

FRIDAY NEXT! BASIL RATHBONE in VICTOR McLAGLEN "RIO"

"FIFTY ROADS TO TOWN" Silm Summerville - Allan Lane - Stepin Fetchit

Regent "SALLY OF THE REGIMENT" "SCOUTS TO THE RESCUE"

Practically strangers, and snowed in for the winter—that's the predicament that faces Don Ameche and Ann Sothern in "Fifty Roads to Town."

"Fifty Roads to Town" tells the story of two young people who meet at a mountain lodge and are marooned by a blizzard, with only a stuffed moose for a chaperon.

"The Beachcomber," which is now showing at the Regent Theatre, Napier, marks the highest point in the distinguished career of the great screen actor, Charles Laughton.

"Sally of the Regiment," which is now showing at the Regent Theatre, Napier, is the first chapter of a serial.

"Street Singer's Serenade" will be remembered as a glorious modern musical romance, punctuated with many delightful song hits.

State

OUTSTANDING DOUBLE FEATURE

"Follow Your Star" And "Young Mr Lincoln"

The thrilling, romantic, eventful youth of Abe Lincoln makes Darryl F. Zanuck's production of "Young Mr. Lincoln" which comes to the State Theatre, Napier, to-morrow, a complete screen surprise and excellent entertainment.

The highlight of the original screen play by Lamar Trotti shows the young lawyer defying a frenzied lynch mob and defending two innocent boys in the famous "moonlight murder" trial—young Lincoln's first challenge.

Covering approximately seven years of his youth, the film culminates in the frontier trial. Re-enacting the best of the famous Lincoln anecdotes, the film is highlighted by such lines as: "To the lynch mob, I'm not going to make any speeches."

The picture is based on the real life story of Tracy. The leading lady is Belle Crayton, who was selected because of her likeness to a girl who once acted as guide, philosopher and friend to the star in his early struggling days.

The great British shipyards at Clydebank, Scotland, are the setting for Gracie Fields' latest comedy film "Shipyard Sally," which is finally showing at the State Theatre, Napier.

Current Attraction "RIO" Also—"THE PYJAMA GIRL MYSTERY."

"The Beachcomber" is Great More Brilliant Acting By Charles Laughton

"Sally of the Regiment," which is now showing at the Regent Theatre, Napier, is the first chapter of a serial.

The director is German-born John Brahm, who made his first acquaintance in Paris, wrote his first script in England, and became a stage producer in Vienna and followed that profession in Berlin.

The arrival of the real gangster, and the subsequent attack of a sheriff's posse, bring the film to a stirring climax.

USED CARS

SPECIALS "M.G." 10 h.p. SPORTS 1937 "T" TYPE, 2-SEATER. Completely Overhauled. Deposit £95

PERSONAL SERVICE! Keep your car on the road economically with the aid of our PERSONAL PROMPT GUARANTEED SERVICE!

THOMPSON MOTORS LIMITED Karamo Rd. Hastings - Phone 3623

EXTRA QUALITY IN TIMBER ... means many years of extra life for your home.

McLEOD & GARDNER LTD. Sawmills, Timber Merchants - HASTINGS

HARVEY'S ARE NOW SHOWING A NEW COMPLETE RANGE OF— FIRESCREENS LOG BOXES COMPANION SETS WALL PLAQUES and BRASS WALL MIRRORS

New Zealand for New Zealanders At the Centennial Exhibition New Zealanders, you will be prouder than ever of your famous Wonderland of the Pacific when you have seen the Centennial Exhibition.

THE DAILY MAIL SUBSCRIPTION RATES DELIVERED COPIES Per annum ... Per half-year ... Per quarter



THRILLS & FUN For Everyone! Now in full swing—the New Zealand Centennial Exhibition!

AMPLE ACCOMMODATION FOR ALL. Get printed form, "How to obtain Accommodation" from any Post Office or Railway Station.

Come Now! FOR THE TIME OF YOUR LIFE TO THE NEW ZEALAND CENTENNIAL EXHIBITION WELLINGTON.

DEVELOP NEW ZEALAND The Best Jelly Crystal made in New Zealand. "LION BRAND" FULL PINT. DELICIOUS FLAVOURS. Only 5d per packet at all Grocers. MADE BY W. PLOWMAN & SONS LTD. NAPIER

LADIES! SAVE YOUR SKIN by using PASCOE'S SKIN ESE, the great Skin Lotion. Amazing effect on Sunburn, removes Freckles, Blackheads, Fashes, and Blemishes of all descriptions. Price 2/- per bottle. RHEUMATISM, NEURITIS, LUMBAGO, SCIATICA, etc.—Those that are unfortunate to be afflicted with any of the above should take PASCOE'S HERBAL REMEDY, which removes the cause from the blood.

MR H. M. BENNETT MR BROMLEY M. BENNETT OPTICIANS HAVE RESUMED PRACTICE. Opp. Regent Theatre, NAPIER.

NEW YEAR PRESENTS FOR THE BABY. MRS CARMICHEL Large Selection at "The Little Shop With Big Values" NELSON STREET, HASTINGS (Next The Hall)

JACQUES des LANDES FROCK SPECIALISTS (Late Kirkcaldie and Staines) Now Corner Heretaunga Street W. and Grays Road. Be Well Dressed for Xmas in a Snappy Frock or Suit. A Large Range of New Styles.

ENVELOPES All Shapes and Sizes. Our Selection is Unexcelled. JOSEPH WILSON & SON LTD. QUEEN ST. EAST — HASTINGS

TWO NEW ZEALAND GIRLS GIVE WAR SERVICE WHILE EN TOUR Ambulance Driving in London And Memorable Continental Journey

When they set forth on a two-year leisurely tour overseas the Misses Doris and Sybil Waldegrave, twin daughters of Mrs H. R. Waldegrave, Palmerston North, little thought that before their return they would be caught up as part of the great civil defence of London in which they served for five or six weeks before leaving on their journey homeward, states the Palmerston North "Times."

Much of their time was spent in Cornwall with their sister, Mrs Rupert Carlyon, formerly of "Gwavas", Waipawa, New Zealand, but the Monday before war was declared they had returned to London and on duty with only two hours to get on the main station for equipment and on duty on night shifts of eight hours. And they were on duty after the momentous declaration for the first three air-raid alarms, when the amazing preparedness of the civilian population was demonstrated in the calm way everyone went about their duties, filling the visitors with admiration.

On the Thursday before war was declared at 9.30 p.m. the Palmerstonians were called up to report for duty with only two hours to be at the main station for equipment and on duty on night shifts of eight hours. And they were on duty after the momentous declaration for the first three air-raid alarms, when the amazing preparedness of the civilian population was demonstrated in the calm way everyone went about their duties, filling the visitors with admiration.

The feeling was growing that a raid on any large scale on London would never be attempted, an enemy being faced with five miles of defence. The travellers laughingly admitted that the balloon barrage were looked upon with greatest affection, many having pet names.

BEAUTY TIPS

- Dark sun-glasses not only protect the eyes from strain, but will prevent those tiny wrinkles which form when the eyes are continually puckered. Spectacle wearers should see that the frames harmonise with the colouring... Bridge players should remember that attention is focussed on the hands. Keep yours in a condition of which you can be proud, and see that the nails are well manicured. A tiny spot of rouge, placed beneath the tip of the nose, will make the nose appear longer. Hikers must have foot comfort. Dust the insides of your shoes with boracic powder and your feet will carry you uncomplainingly for many miles. A graceful carriage requires a straight and lovely back. Exercise will help to achieve this. Never stand with your shoulders drooped. If your hair is jet black a little brilliancy should be well brushed in while the hair is damp. This will give a shining blackness, which is very fashionable at present.

Realising there was a waiting list of something like 1000 for passages on their particular liner, they thought it wiser to return to New Zealand to the regret of their commandant, Countess Baranowska, a Polish lady, who tried hard to persuade them to stay.

Continental Tour. Before the grim business of the 1938 crisis these travellers were fortunate to be able to make a memorable motor tour of the Continent. They bought a small car which again was fortunate because they struck a rough crossing to Calais, heavy cars on the Channel steamer suffering considerable damage which the small cars escaped. Fine weather favoured the trip which enabled the most enjoyable mode of travelling with picnic meals by the way, excellent roads, comfortable quarters for the nights and the good fortune of no engine or transport trouble. The route taken was through Belgium and Luxembourg to Germany, in which country they spent three weeks. The travellers did not sense anything of the "hymn of hate" against the British, but had noticed considerable military activity at Trier although they saw nothing of the Siegfried Line. The way was made along the course of the Moselle and up the Rhine through the Black Forest and Austrian Tyrol. Travelling along the autobahns was a very fine experience but despite their boasted safety the travellers came upon an accident one day. During their visit



SWING INTO LINEN.—A crisp coat of tailored white linen over a pretty floral frock. The very thing for these summer days, to wear with a large straw hat and smart white suede shoes.

A Scottish Wedding NAPIER BRIDE WEARS IVORY NEEDLERUN LACE

MCKENZIE—WALKER Hellyer—Prince RECENT QUIET WEDDING Two Maids in Blue

The quiet but pretty wedding was solemnised at the St. Andrew's Church, Napier, recently, of Jean Edna, only daughter of Mr and Mrs L. Prince, McVay Street, Napier, to Colin Ramsay, son of the late Mr A. K. McKenzie and Mrs E. B. McKenzie, Riverslea Road, Hastings.

The ceremony was performed by the Rev. K. Miller. Given away by her father, the bride was very daintily frocked in ivory satin fashioned on princess lines. The back was finished with tiny buttons and the embroidered tulle fell softly from a coronet of orange blossom. She carried a bouquet of white carnations and sweet peas, with maiden-hair fern.

Miss Eileen Walker, sister of the bride, attended as bridesmaid, and wore a clover shade frock of crepe de chine, with a small veil worn on the hair, and another sister, little Esma, attended as flower-girl, she being prettily dressed in a lemon net frock trimmed with lemon satin and ribbon.

Mr Roderick McKenzie carried out the duties of best man, and the Scottish atmosphere was added to by the playing of the pipes as the bridal pair entered and left the church.

At the conclusion of the ceremony, a delightful reception was held in the room at the Hotel. In the midst of the beautifully decorated tables was the handsome cake, which the bride cut with a tartan decorated knife, and numerous handsome presents were on display.

The guests were received by the mother of the bride and bridegroom, the former wearing a frock of flowered silk with navy hat and accessories to match. She also carried a bridegroom's mother wore a smart coat gown in navy, with a veiled navy hat trimmed with white flowers, her bouquet also being of red carnations.

Madeline Had A Vision BUT SHE MADE FOUR MISTAKES: CAN YOU FIND THEM?

Madeline had a vision. It was not a very thrilling vision, really—just the dirty skirting board in the spare room; and it was dirty. So Mad. fetched a bucket of warm, soapy water, sponge and a brush, and scrubbed it until it was as white as snow. She started at the top of the skirting board, working downwards, washing only a small area at a time. She used a fairly dry sponge to prevent smearing—rinsed with water, and wiped and polished. Then she sat back on her heels, gave a sigh of relief, and went into the kitchen to make a cake. She decided to make a Swiss roll. She fetched all the ingredients she needed, and then grouped them around her. She sieved the right amount of flour and baking powder, whisked the eggs and sugar into a nice cream, added milk, stirred in the flour, and turned the mixture into her sandwich tin. This she put in a hot oven for about eight minutes, turning it out upside down on sugared paper, spread on the jam, and rolled up. Then, because she wasn't watching what she was doing, she stupidly cut her finger so that it bled all over her apron. She ran into the scullery, took off her apron, and swished the stained part about in hot water and salt because she couldn't find the ammonia. Then she had a brain wave. She washed her new chambray leather gloves in a new way. She added half a teaspoon of olive oil to some warm, soap-flaky water, put her gloves on, and "washed her hands" gently. Then she rinsed her gloves in two clear, warm waters and hung them up to dry. Mad. made four mistakes in this story. Can you find them? The answers will be published on this page to-morrow morning.

HERE'S WHAT YOU NEED X AT PRICES YOU CAN AFFORD

LADIES' STYLISH SUMMER COSTUMES MORE SAVINGS IN HOUSEHOLD NEEDS. Just the thing for your visit to the Centennial Exhibition. LADIES' STYLISH TAILORED COSTUMES in smart Linen effect fabric. Shades of Rose, Blue, Gold and Fawn. Smart Coat with one-button front and side pockets. Plain tailored skirt with inverted pleat. Sizes S.S. Women's to Women's-X. SPECIAL VALUE 33/6. DAINITY SCARVES—These make a charming finish to any Ensemble. We have a lovely selection in George, Ninnos and Crepe-de-Chines. Gay colours in Striped Floral and Spot designs. PRICED FROM 2/11 ea. DIRDLS FOR MAIDS—The children will love these pretty Dirlds in a splendid washing Cotton. Sizes from 27in. to 39in. FROM 7/11 ea. LEATHER SHOPPING BAGS—Made in N.Z. Nothing could be handier than one of these Solid Leather Shopping Bags in Black or Brown. Strongly made, with full Zip Fasteners. FROM 12/6 ea. SHEER FROCKINGS FOR SUNNY DAYS—So delightfully cool and smart. There's nothing to equal a sheer frock for Summer Smartness. In Navy, Black and Colours, with Striped and Figured designs. This is the last we shall get for the season, so make your selection now. 36 inches wide. SPECIAL VALUE 3/6 3/4. TABLE CLOTHS... COTTON Dinner Cloths, 54 x 70... PILEW SLIPS—Choose from our great selection in all styles, at remarkable value prices... TATTERFIELD MATTRESSES—Good quality Tickers, Roll edges... UNBLEACHED SHEETINGS—Good quality Heavy Twill Unbleached Sheetings...

X BAIRD'S HASTINGS X P.O. Box 6

Five o'Clock Gossip See! Oh! WHAT A POLISH! Makes your furniture shine like new. Removes dirt, dust and grease. Use it on your mop and dusters. Wonderful for quickly polishing motor cars, windows, etc. You'll be amazed and delighted. Get a bottle of C.O. Polishing Oil to-day. CO POLISHING OIL Another C.O. Quality Product

Mr and Mrs J. Gibb left Havelock North yesterday for Wellington before returning home to Whangarei. Miss Talbot returned to Gisborne yesterday after a visit of several days at Wairoa. Mrs W. Bigham, Whatatutu, Gisborne, is visiting her parents, Mr and Mrs D. S. Sharp, Wairoa. Mr and Mrs E. N. H. Stewart and family, Kowhai Road, Napier, are at present visiting Wellington. Miss Jean Russell, Kowhai Road, Napier, is spending a few days in Wellington. Mr and Mrs J. N. Tinker, Whatatutu, Gisborne, are visiting Napier and are the guests of Miss A. M. Williams, "Ashridge". Miss Thora Tilbury, Dunedin, who is spending a holiday in Napier, is the guest of Mrs J. Shaw, McGrath Street. Miss Evelyn Bailey, Napier, has returned from a holiday spent in Wellington. Mr and Mrs F. A. McPhail, Cobden Road, Napier, are visiting Wairoa. Mr and Mrs A. H. D. Mayne, Seapoint Road, Napier, returned from Taupo on Sunday. Perfectly styled linen and cotton frocks. You'll love to wear them for vacation, for afternoon, for shopping. Lovely florals and plain shades in all sizes from 27/6 to 39/6. Delightful floral and plain georgette and sheer frocks for special occasions from 59/6 to 89/6. Cocktail and afternoon frocks in plain silk delaines and cloques in pigeon blue, Baltic, tropic earth and dragon-fly blue, 49s, 59s, 69s, and 79s—"Victor Gowns" Hastings Exclusive Salon, "Phone 3076.

SPECIAL NEW YEAR REDUCTIONS AT HAYS 10% DISCOUNT OFF ALL MAN-MADE COATS AND COSTUMES—for a Short Period Only! See Our Popular TWO-WAY CENTENNIAL COATS TAILORED LINEN COATS In all sizes and shades. From 42/6 MAN TAILORED SUMMER COATS In Latest English Materials. All shades and sizes. From 3 gns. USE OUR LAY-BY SYSTEM. A Small Deposit secures any Garment. MADE-TO-MEASURE—OUR SPECIALITY J. HAYS AND COMPANY LIMITED Hawke's Bay's Leading Furriers, Coat & Costume Specialists Cnr. Dalton & Emerson Sts., Central Hotel Bldgs, NAPIER. Phone 4745

ZALA'S THE DEPENDABLE FURRIERS. Stockists of: LATEST MODEL COATS, CAPES, STYLES, Etc. Restyling and Re-pairing of all Fur Garments. Expert workmanship. Moderate Charges. HAWKE'S BAY'S PREMIER FURRIERS

Gill & Fenton Limited FURNISHERS Market St. Hastings

ENJOYABLE DANCE AT HAUMOANA

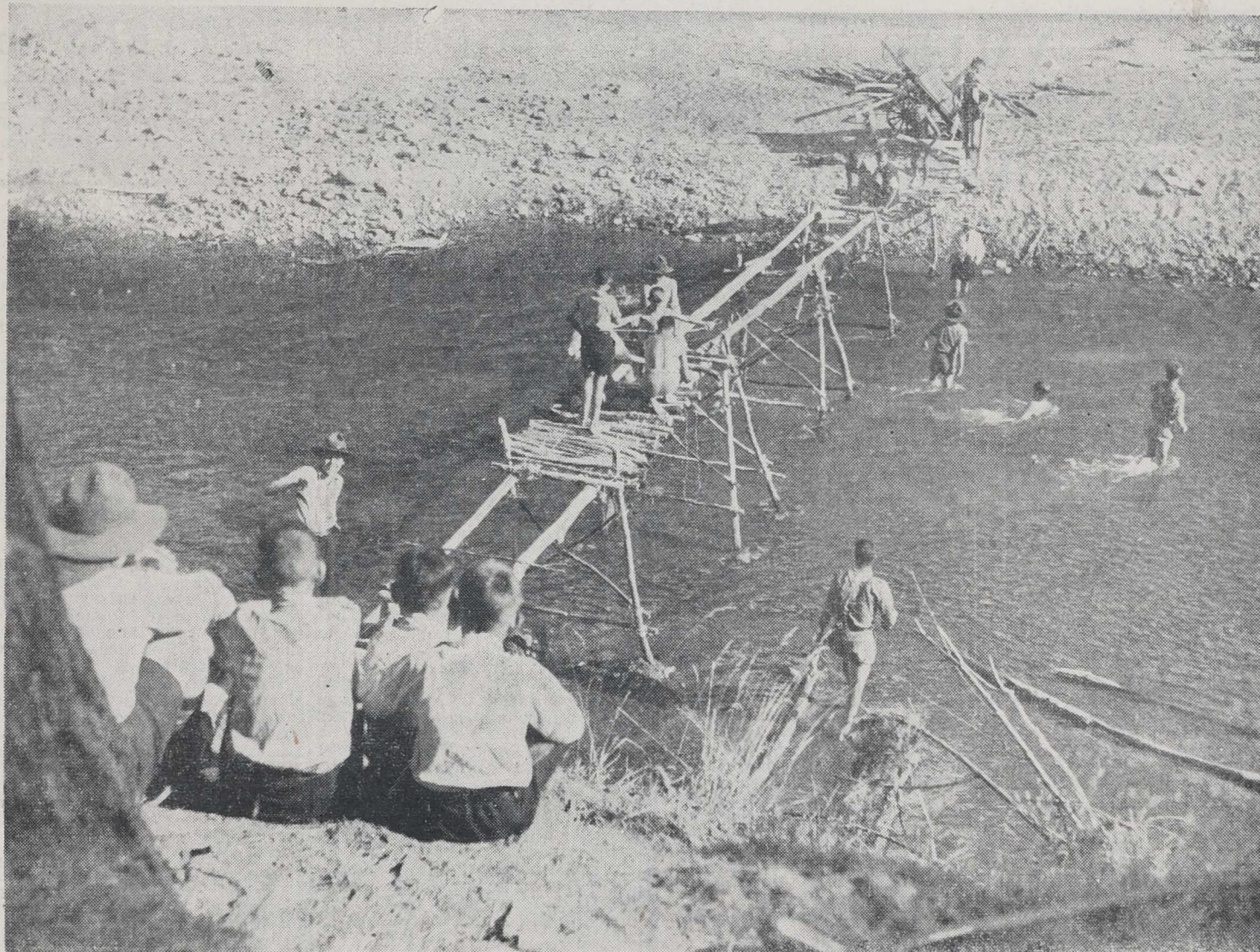
Many Attend HOLIDAY VISITORS TO BEACH

"Daily Mail" Special Service. HAUMOANA. The Haumoana Beach Improvement Society's Saturday night dance proved an enjoyable evening.

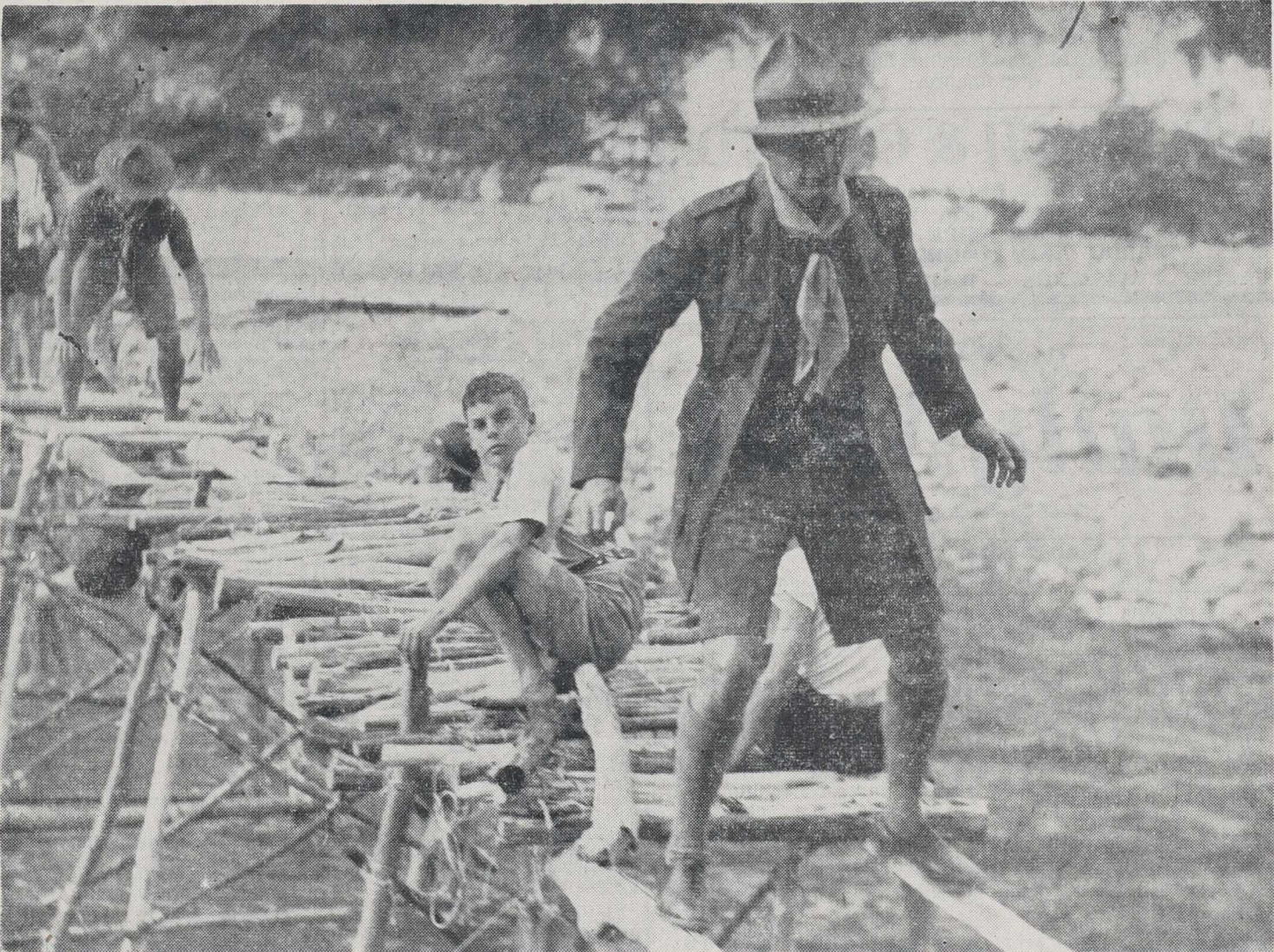
ENTRIES TO CLOSE TO-DAY

Waipukurau A. And P. Show

"Daily Mail" Special Service. WAIPUKURAU. Intending exhibitors at the Waipukurau A. & P. Association's Centennial Show, to be held on January 20, are reminded that entries will close with the secretary (Mr G. Reg. Cook) to-day (Tuesday).



THE YOUNG ENGINEERS.—Boy Scouts at Rissington camp show their prowess in the skilled craft of bridge-building. This structure is not so crazy as it may appear at first glance.



WALKING ON THE NARROW WAY.—As befits a bishop, the Rt. Rev. G. V. Gerard keeps to the straight and narrow path as he lends a hand to the Boy Scouts of Rissington in the construction of a bridge.

ANTI-SEMITIC PRESS CAMPAIGN IN HUNGARY

Jewish Influence On Public Opinion Is Resisted By The Government

The Hungarian Government has brought the "closed shop" policy to its newspapers. As part of its anti-Semitic Press law, a Press Chamber, or Guild, is being formed, membership in which is requisite for carrying on journalistic work.

According to the law only nine per cent of the members in the Press Chamber may be Jews; that is, 11 per cent. baptized Jews, three per cent decorated Jewish war veterans, and the rest ordinary Israelites.

A few extreme "rightists" were excluded, as well as a number of Liberals, Radicals, Socialists, and former Communists. Most of those refused admission, however, were Jews.

It was against these latter papers that the law was directed, and they have been drastically treated. One little daily had all but three members of its personnel excluded.

The Jewish Influence. The Jews had come to exercise great influence on the Hungarian Press and there has been a strong movement among the Hungarians to prevent them from becoming predominantly the spokesmen for public opinion in the country.

Many distinguished journalists are now condemned to inactivity, and the quality of the Hungarian Press is expected to deteriorate.

The 300 mark has been passed for allotments in the Dannevirke district, the total now standing at 304.

Handicaps For Sports

DANNEVIRKE EVENTS

Meeting On Domain To-morrow

MEN AND WOMEN

DANNEVIRKE.

Handicaps for the first evening sports meeting of the year, on the domain at 6.30 p.m. to-morrow (Wednesday) are as follows, in the order given:—

Men's 100 yards.—A. Schaare 8yds, D. J. Wardle and L. Alding 10, A. Doak, A. Coombs, J. McIntyre, E. J. Wardle, J. Meacham, and B. Kennedy 12, K. Cassidy 13.

Women's 100 yards (short limit handicap).—P. Ayres and B. McGrath 8, M. Donaldson and N. Redward 7, J. Obrist 4, M. Oliver 8, D. Whitmore 12.

Half-mile cycle (short limit).—F. Wilson 30, G. Mangos 35, L. Clark 45, L. Hansen 50.

One-mile run (short limit handicap).—R. Ballantyne, J. McIntyre and D. Macdonald 8, R. Harrison 40, G. Fahey 45, T. McKenna, F. Stark and A. Coombs 55.

Women's 75 yards.—P. Ayres and B. McGrath 5yds, M. Donaldson and N. Redward 7, J. Obrist 8, M. Oliver 10, D. Whitmore 12.

One and a half miles cycle.—F. Wilson 30, G. Mangos 35, L. Clark 45, L. Hansen 50.

A men's long jump will also be held.

TO GO TO TRENTHAM ON JANUARY 16

Dannevirke Men Now Called Up

DANNEVIRKE.

In accordance with the decision to call up all available fit men in this district to proceed to Trentham on January 16 to be trained for the Second Echelon, the following have so far been selected:—

D. R. C. Bond, I. C. Burnett, I. E. Harris, W. V. J. Kiscock, I. J. Simpson, J. C. Selby, A. F. Sargent, C. A. Remnant, W. A. Olsen, A. R. Bray.

The 300 mark has been passed for allotments in the Dannevirke district, the total now standing at 304.

Advertisement for ASPRO. Features a testimonial from Mrs. L. M. Allen, a list of ailments treated by ASPRO (e.g., Sleeplessness, Rheumatism, Malaria, Asthma), and a section titled 'Professional Advice' from a nurse. The ad emphasizes 'Instant Relief from Violent Headaches' and 'Gives Quickest Relief'.

BROADCASTING IN ARGENTINA. STATE CONTROL IS RECOMMENDED. LESS ADVERTISING. Quality Of Programmes To Be Improved. State supervision for national broadcasting in Argentina is recommended by a Special Commission which reported "disorder and anarchy" in the radio world as a result of private competition.

An Athletic Meeting. SPORTS AT WAIROA. Men's And Women's Handicaps. AT LAMBTON SQUARE. "Daily Mail" Special Service. WAIROA. The following handicaps have been declared by the official handicapper (Mr. B. E. Parkinson) for this evening's sports meeting to be conducted by the Wairoa Amateur Athletic and Cycling Club at Lambton Square, starting at 7.30:—

PROGRAMME OF TENNIS. WAIPOKURAU ANNUAL EVENT. START THURSDAY. Full Championship Conditions. "Daily Mail" Special Service. WAIPOKURAU. Preparations are well in hand for the annual tennis tournament of the Waipukurau Lawn Tennis Club, which will be held from Thursday to Saturday, inclusive, this week.

READERS! THIS CONCERNS YOU. Cutting out waste is to-day a national necessity. Haphazard buying can become waste. The DAILY MAIL wants you to get your copy regularly each day. Every unsold copy means waste of newsprint, cost of carriage, preventable labour for the news-agent.

Good progress has been made with preparatory work on the section in Durham Street, Auckland, where the new commercial radio station is to be built. Much excavation has been necessary to lower the upper end of the lot and align it with the street level.

Women's Events. 75 yards: L. Edwards, 6yds; M. Stafford, 8yds; P. Eria, 7yds; M. Harvey, 4yds; E. Maloney, 8yds; E. Hanham, 8yds; J. McLellan, 9yds; S. Maloney, 9yds; Z. Thompson, 7yds; B. Gordon, 9yds; N. Marshall, 9yds; H. Jones, 8yds; L. Dunbar, 9yds; J. Pilkington, 4yds; M. Mortenson, 7yds; C. Nicholas, 6yds; M. Shaw, 7yds; J. Dunbar, 7yds; I. Hingston, 7yds; N. Matson, 8yds; M. Curtis, 8yds; E. Wright, 8yds; T. Curtis, 8yds.

A large gathering of Maoris, of the Ringatu faith, chiefly from the Urewera and East Coast districts, was present over the New Year for the opening of a new meeting house at Te Waiti, a few miles on the Waikaremoana side of Ruatuhuna.

Advertisement for Westerman's Modern Store. Features the text 'CLOTHES for your BEACH HOLIDAY' and 'Stylish Beach Wear'. Lists various clothing items like sun suits, ladies' wool bathers, and locknet sports blouses. Includes the store name 'Westerman's MODERN STORE' and the slogan 'Hastings' House of Value'.









WELLINGTON CUP FIELD ANALYSED

Old Bill Nicely Treated

DANGER FROM BEAU VITE AND FILS DE VAALS

Material There For Splendid Race

(By MOTUROA).

The Wellington Centennial Cup, to be decided at Trentham on Thursday week, is now the main topic of racing conversation...

There is a wealth of Christmas and New Year form to be analysed by backers, while further complications are added to this problem by the spring form in Australia...

The acceptances this week may help to clarify the issue, but there is every indication that the field will be a very large one...

DESPITE his failure in the A.J.C. Metropolitan Handicap and in the New Zealand Cup, Royal Chief has earned pride of place in the handicapper's estimation...

Cheval de Volee, as winner of two Auckland Cups, the Taranaki Cup and other big races, gets in well with 8.5...

ROYAL CHIEF'S inclusion in the Wellington Cup field provided the handicapper with an easy tonight. The Chief Ruler horse has 9.5, but that will not rule him out of early discussions.

MILROD, 11.3 Hartina 9 2, Small Boy 10 8 Air Shot 9 0, Raana 10 8 Javelin 9 0, Prime 9 0...

WELLINGTON CUP WEIGHTS ROYAL CHIEF KEPT WELL UP, CENTREPOISE'S 8.10

ROYAL CHIEF'S inclusion in the Wellington Cup field provided the handicapper with an easy tonight. The Chief Ruler horse has 9.5, but that will not rule him out of early discussions.

DESPITE his failure in the A.J.C. Metropolitan Handicap and in the New Zealand Cup, Royal Chief has earned pride of place in the handicapper's estimation...

ROYAL CHIEF'S inclusion in the Wellington Cup field provided the handicapper with an easy tonight. The Chief Ruler horse has 9.5, but that will not rule him out of early discussions.

ROYAL CHIEF'S inclusion in the Wellington Cup field provided the handicapper with an easy tonight. The Chief Ruler horse has 9.5, but that will not rule him out of early discussions.

ROYAL CHIEF'S inclusion in the Wellington Cup field provided the handicapper with an easy tonight. The Chief Ruler horse has 9.5, but that will not rule him out of early discussions.

ROYAL CHIEF'S inclusion in the Wellington Cup field provided the handicapper with an easy tonight. The Chief Ruler horse has 9.5, but that will not rule him out of early discussions.

ROYAL CHIEF'S inclusion in the Wellington Cup field provided the handicapper with an easy tonight. The Chief Ruler horse has 9.5, but that will not rule him out of early discussions.

ROYAL CHIEF'S inclusion in the Wellington Cup field provided the handicapper with an easy tonight. The Chief Ruler horse has 9.5, but that will not rule him out of early discussions.

ROYAL CHIEF'S inclusion in the Wellington Cup field provided the handicapper with an easy tonight. The Chief Ruler horse has 9.5, but that will not rule him out of early discussions.

ROYAL CHIEF'S inclusion in the Wellington Cup field provided the handicapper with an easy tonight. The Chief Ruler horse has 9.5, but that will not rule him out of early discussions.

ROYAL CHIEF'S inclusion in the Wellington Cup field provided the handicapper with an easy tonight. The Chief Ruler horse has 9.5, but that will not rule him out of early discussions.

ROYAL CHIEF'S inclusion in the Wellington Cup field provided the handicapper with an easy tonight. The Chief Ruler horse has 9.5, but that will not rule him out of early discussions.

ROYAL CHIEF'S inclusion in the Wellington Cup field provided the handicapper with an easy tonight. The Chief Ruler horse has 9.5, but that will not rule him out of early discussions.



ROYAL CHIEF'S inclusion in the Wellington Cup field provided the handicapper with an easy tonight. The Chief Ruler horse has 9.5, but that will not rule him out of early discussions.

WELLINGTON CUP WEIGHTS

ROYAL CHIEF KEPT WELL UP, CENTREPOISE'S 8.10

ROYAL CHIEF'S inclusion in the Wellington Cup field provided the handicapper with an easy tonight. The Chief Ruler horse has 9.5, but that will not rule him out of early discussions.

ROYAL CHIEF'S inclusion in the Wellington Cup field provided the handicapper with an easy tonight. The Chief Ruler horse has 9.5, but that will not rule him out of early discussions.

ROYAL CHIEF'S inclusion in the Wellington Cup field provided the handicapper with an easy tonight. The Chief Ruler horse has 9.5, but that will not rule him out of early discussions.

ROYAL CHIEF'S inclusion in the Wellington Cup field provided the handicapper with an easy tonight. The Chief Ruler horse has 9.5, but that will not rule him out of early discussions.

ROYAL CHIEF'S inclusion in the Wellington Cup field provided the handicapper with an easy tonight. The Chief Ruler horse has 9.5, but that will not rule him out of early discussions.

ROYAL CHIEF'S inclusion in the Wellington Cup field provided the handicapper with an easy tonight. The Chief Ruler horse has 9.5, but that will not rule him out of early discussions.

ROYAL CHIEF'S inclusion in the Wellington Cup field provided the handicapper with an easy tonight. The Chief Ruler horse has 9.5, but that will not rule him out of early discussions.

ROYAL CHIEF'S inclusion in the Wellington Cup field provided the handicapper with an easy tonight. The Chief Ruler horse has 9.5, but that will not rule him out of early discussions.

ROYAL CHIEF'S inclusion in the Wellington Cup field provided the handicapper with an easy tonight. The Chief Ruler horse has 9.5, but that will not rule him out of early discussions.

ROYAL CHIEF'S inclusion in the Wellington Cup field provided the handicapper with an easy tonight. The Chief Ruler horse has 9.5, but that will not rule him out of early discussions.

ROYAL CHIEF'S inclusion in the Wellington Cup field provided the handicapper with an easy tonight. The Chief Ruler horse has 9.5, but that will not rule him out of early discussions.

ROYAL CHIEF'S inclusion in the Wellington Cup field provided the handicapper with an easy tonight. The Chief Ruler horse has 9.5, but that will not rule him out of early discussions.

ROYAL CHIEF'S inclusion in the Wellington Cup field provided the handicapper with an easy tonight. The Chief Ruler horse has 9.5, but that will not rule him out of early discussions.

ROYAL CHIEF'S inclusion in the Wellington Cup field provided the handicapper with an easy tonight. The Chief Ruler horse has 9.5, but that will not rule him out of early discussions.

ROYAL CHIEF'S inclusion in the Wellington Cup field provided the handicapper with an easy tonight. The Chief Ruler horse has 9.5, but that will not rule him out of early discussions.

ROYAL CHIEF'S inclusion in the Wellington Cup field provided the handicapper with an easy tonight. The Chief Ruler horse has 9.5, but that will not rule him out of early discussions.

ROYAL CHIEF'S inclusion in the Wellington Cup field provided the handicapper with an easy tonight. The Chief Ruler horse has 9.5, but that will not rule him out of early discussions.

ROYAL CHIEF'S inclusion in the Wellington Cup field provided the handicapper with an easy tonight. The Chief Ruler horse has 9.5, but that will not rule him out of early discussions.

ROYAL CHIEF'S inclusion in the Wellington Cup field provided the handicapper with an easy tonight. The Chief Ruler horse has 9.5, but that will not rule him out of early discussions.

ROYAL CHIEF'S inclusion in the Wellington Cup field provided the handicapper with an easy tonight. The Chief Ruler horse has 9.5, but that will not rule him out of early discussions.

ROYAL CHIEF'S inclusion in the Wellington Cup field provided the handicapper with an easy tonight. The Chief Ruler horse has 9.5, but that will not rule him out of early discussions.

ROYAL CHIEF'S inclusion in the Wellington Cup field provided the handicapper with an easy tonight. The Chief Ruler horse has 9.5, but that will not rule him out of early discussions.

ROYAL CHIEF'S inclusion in the Wellington Cup field provided the handicapper with an easy tonight. The Chief Ruler horse has 9.5, but that will not rule him out of early discussions.

ROYAL CHIEF'S inclusion in the Wellington Cup field provided the handicapper with an easy tonight. The Chief Ruler horse has 9.5, but that will not rule him out of early discussions.

ROYAL CHIEF'S inclusion in the Wellington Cup field provided the handicapper with an easy tonight. The Chief Ruler horse has 9.5, but that will not rule him out of early discussions.

ROYAL CHIEF'S inclusion in the Wellington Cup field provided the handicapper with an easy tonight. The Chief Ruler horse has 9.5, but that will not rule him out of early discussions.

ROYAL CHIEF'S inclusion in the Wellington Cup field provided the handicapper with an easy tonight. The Chief Ruler horse has 9.5, but that will not rule him out of early discussions.

Form Horses At Reefton

KILROBE WINS AGAIN

Four Horses Repeat Saturday's Efforts

By Telegraph-Press Association. GREYMOUTH, Jan. 8. The second day of the Reefton meeting was held in glorious weather. There was a large attendance and the track was fast.

THE WAIROA SUMMER MEETING

Handicaps For Saturday Week

The following handicaps were declared for the Wairoa meeting to be held on January 20...

Handicaps for Saturday Week: BIRCHWOOD NOVICE, Of 1100, 6 furlongs...

WELLINGTON CUP, Of 1000, 1 1/2 miles. Doubleback 9 13, Lord Puck 7 9...

WOODLAW HANDICAP, Of 1000, 6 furlongs. Kippen 9 8, Prince 9 8...

FORDE STEEPLECHASE, Of 1400, about 2 miles. El Caballo 10 13, Henry Dawson 9 0...

WAIKARI HANDICAP, Of 1100, 7 furlongs. Mon's Song 9 0, Auctor 7 8...

BATES HANDICAP, Of 1100, 1 mile. Spendthrift 9 13, Lord Puck 7 12...

EAST COAST SUMMER CIRCUIT. Wairoa And Poverty Bay Meetings.

Hawke's Bay owners and trainers should consider the programme for the Wairoa Racing Club's summer meeting...

Also started: 1 Rabble 9.0, 4 Waitaka 7.12, 3 Studley Royal 7.4...

Also started: 2 Jed Forest 8.4, 6 Miss Tasta 8.0 car. 8.4, 1 Fascinator 7.10 car. 7.7...

Also started: 1 Rabble 9.0, 4 Waitaka 7.12, 3 Studley Royal 7.4...

Also started: 2 Jed Forest 8.4, 6 Miss Tasta 8.0 car. 8.4, 1 Fascinator 7.10 car. 7.7...

Also started: 1 Rabble 9.0, 4 Waitaka 7.12, 3 Studley Royal 7.4...

Also started: 2 Jed Forest 8.4, 6 Miss Tasta 8.0 car. 8.4, 1 Fascinator 7.10 car. 7.7...

Also started: 1 Rabble 9.0, 4 Waitaka 7.12, 3 Studley Royal 7.4...

Also started: 2 Jed Forest 8.4, 6 Miss Tasta 8.0 car. 8.4, 1 Fascinator 7.10 car. 7.7...

Also started: 1 Rabble 9.0, 4 Waitaka 7.12, 3 Studley Royal 7.4...

Also started: 2 Jed Forest 8.4, 6 Miss Tasta 8.0 car. 8.4, 1 Fascinator 7.10 car. 7.7...

Also started: 1 Rabble 9.0, 4 Waitaka 7.12, 3 Studley Royal 7.4...

Also started: 2 Jed Forest 8.4, 6 Miss Tasta 8.0 car. 8.4, 1 Fascinator 7.10 car. 7.7...

Also started: 1 Rabble 9.0, 4 Waitaka 7.12, 3 Studley Royal 7.4...

Also started: 2 Jed Forest 8.4, 6 Miss Tasta 8.0 car. 8.4, 1 Fascinator 7.10 car. 7.7...

Also started: 1 Rabble 9.0, 4 Waitaka 7.12, 3 Studley Royal 7.4...

Also started: 2 Jed Forest 8.4, 6 Miss Tasta 8.0 car. 8.4, 1 Fascinator 7.10 car. 7.7...

Also started: 1 Rabble 9.0, 4 Waitaka 7.12, 3 Studley Royal 7.4...

YOU SUPPLY THE FRUIT— WE HAVE THE JARS, ETC.!. Screw Top Wide Mouth. Glass Top wide Mouth. Tie Over Jam Jars. Honey Jars. CELOPHANE JAM COVERS. PRESERVING PANS. TEXWAX.

HAWKE'S BAY FARMERS' ASSOCIATION LTD. CO-OPERATIVE. Where Quality Costs Less. HASTINGS

Can We Be Of Any Assistance to YOU! in our Particular Class of Business. CARRYING OF ANY DESCRIPTION. CUSTOMS CLEARING. LIVESTOCK AND ALL FARM WORK. COAL, COKE, WOOD, CARBONETTES. WILLIAMS & CREAGH LTD. NAPIER HASTINGS

THE MOST BEAUTIFUL AND DURABLE OF ALL DECORATIVE FINISHES. The famous range of "DULUX" Finishes—Gloss and Super-Matt—fills every possible interior need.

MR FARMER! For Your SHEEP DIP GRASS SEED. Full Stocks, including Ryegrass, Clover, etc. SUPERPHOSPHATE FOR TOP-DRESSING

AWATOTO SHINGLE CO. LTD. NAPIER: Main Highway, Awatoto. HASTINGS: Maraekahaka Road. Phone 2636.

CLEANSO Drenches, Footrot Cures, & Disinfectants go to prove their worth. J. C. JORDAN GRAIN, SEED, & PRODUCE MERCHANT. Sole Agent, HASTINGS.

NEW YEAR CHEER. Another shipment of our select AUSTRALIAN PORT has arrived and is now available at the following prices: Quarts ... 4/- per bottle. GRAND HOTEL BOTTLE STORE. D. D. STEWART.

GENTS' SPORTS WRISTLET WATCHES. Waterproof — Shockproof — Dustproof. From £4/15/- S. O. GARLAND & SON THE QUALITY JEWELLERS HASTINGS

