

HASTINGS THEATRES

STATE 3-SESSIONS TO-DAY 2.15 - 5 - 8 P.M. PLANS AT THEATRE PHONE 2674. TEN TIMES AS GOOD AS IT LOOKS ON PAPER! Thrill follows thrill and laughter only ceases when excitement holds you spell-bound!

Regent 3 SESSIONS TO-DAY 2.15, 5, 8 p.m. FINALLY MONDAY - 2.15 & 8.0. MORE THRILLS - MORE EXCITEMENT - MORE ADVENTURE - as the reckless star of "Robin Hood" and "Dodge City" storms the screen again in his most thrilling role!

State COMEDY-DRAMA FROM REAL-LIFE "A Window In London" Fine Story A story set in London, telling of the lives of its everyday ordinary people, "A Window In London," now showing at the State Theatre, Hastings, has a Thames-side setting for the background of its real-life adventures.

Regent EXCITING ADVENTURE, "VIRGINIA CITY" Errol Flynn Has Fine Role There are thrills and excitement aplenty in the stirring Warner Bros. film, "Virginia City," which is now at the Regent Theatre, Hastings.

NAPIER THEATRES Alice Faye in FINE ROMANCE "Little Old New York" Lives Again The boisterous New York of the good old days, when cows roamed Fifth Avenue and a barmaid—or a lady—could win a man like Robert Fulton, are brought vividly to life on the screen in "Little Old New York," which is now screening at the State Theatre, Napier.

Regent AGAIN TO-DAY Jean Arthur - Fred MacMurray Melvyn Douglas in "TOO MANY HUSBANDS" The Merriest Marital Mixup since Grandma was a Blushing Bride!

AT THE SHOW Come to the Show! BEGONE, DULL CARE!! MERRY-GO-ROUND As Popular as Ever! CHAIR-O-PLANE Sensational! Thrilling! DODGERS For Young or Old—Rich or Poor! Direction: Davey's Big Shows "A RELIABLE AMUSEMENT ORGANISATION"

AT THE SHOW THRILLING! COLOURFUL! SPECTACULAR! FRANK DE LYALL takes pleasure in presenting the greatest sensation in skating ever conceived. FOUR ST. MORITZ SKATERS AN ENTIRELY NEW SHOW THIS YEAR! Daring in its conception! Fascinating in its Novelty! Thousands will thrill to this Sensationally Different Show! WONDERS ON WHEELS!

SHOWGROUNDS, SHOW DAY! The PETRIFIED WOMAN A wonderful exhibit of the Petrified Body of a Young Aboriginal Woman. DON'T FAIL TO SEE HER AT THE SHOW. LOCATION: SIDE-SHOW AREA

Rapid Transport For Goods RAIL YOUR FREIGHT Transport worries disappear when you hand your freight to the Railways. Whatever may be the goods—perishable, fragile, furniture, livestock—you can be assured always of the cheap, careful and quick speciality service the Railways provide. Any Stationmaster, Goods Agent or Business Agent will be pleased to help you in your transport problems. Reliable Service By Rail

FARM and STATION CARRYING EXPERIENCED DRIVERS - UP-TO-DATE PLANT Mail Contractors and Goods Service Operators to Glenlyon, Kereru, Whana Whana, Crownthorpe. WILLIAMS & CREAGH LTD. DIAL: HASTINGS 2727. Night 3957. NAPIER 4984. Night 2472.

DOKKO Is an effective antiseptic protective for lambs' docking wounds, lambs' navels, and useful for all animal wounds. FROM your Merchant or Store.

SCOOP!! ALLIED CONVOY DRIVES OFF HEAVY BOMBING ATTACK. Havoc of Bombings in Belgium - Sunken Submarine "Squalas" Refloated: Renamed and now in commission. TO-DAY At 2.0 COSY TO-NIGHT At 7.45 Indiscriminate Bombing of Laughter! In fact, you will be Demolished with Laughter!

ON THE STAGE TO-NIGHT! DRAWING OF THE SOUTH ISLAND SOCIETY'S ART UNION STALLS MUNICIPAL CIRCLE 1/3 1/6 A roistering story - flaming action - unforgettable romance, and the tops in everything you've seen for thrills! HENRY FONDA - Dorothy LAMOUR - George RAFT JOHN BARRYMORE - ARMI TAMBOFF in "SPAWN OF THE NORTH" SECOND FEATURE Six-shooters blaze and boom through this crimson-streak romance of Zane Grey's Lusty West! JOHN WAYNE - in - ZANE GREY'S MARSHA HUNT "BORN TO THE WEST" (Both Approved for Universal Exhibition)

WHOOPEE! Join the Fun at the ELECTRIC SPEEDWAY (Back of Hastings Hotel - Railway Road, Hastings) "The ride that broke records at the Scottish and New Zealand Centennials." OUR PRICES NEVER VARY. ONE PRICE AND A DECENT LONG RIDE. WE COMMENCE AT 11 A.M. DAILY

TO-DAY MAYFAIR 2 and 7.45 p.m. Hopalong Cassidy in "THE SHOWDOWN" 2 Big Shows Bill Holden - Bonita GRANVILLE in "THOSE WERE THE DAYS" THE GREATEST ACTION AND COMEDY PROGRAMME SEEN IN MANY A DAY!

PROGRAMMES ON THE AIR IYA Auckland 6.0, 7.0, 8.45 a.m.: B.B.C. music. 7.30: Breakfast session. 9.0: "Entertainers All." 10.0: Devotional service. 10.15: "In Holiday Mood." 11.0: "The Morning Spell." 11.15: "Domestic Harmony." 12.0: Lunch music. 1.15 p.m.: B.B.C. news. 2.0: "Rhythm in Relays." 3.30 and 4.30: Sports results. 5.0: Children's session. 5.45: Dinner music. 6.15: B.B.C. news. 6.55: Weather report. 7.0: News. 7.15: Topical talk. 7.30: "The Gondoliers." The Gilbert and Sullivan Opera. 8.30: Nancy Francis (soprano). 8.42: Rosamund Caradus (soprano). 8.52: Edith Lorand Orchestra. 8.57: Weather report and station notices. 9.0: N.B.S. Newsreel. 9.20: Philip Green and his Orchestra. 9.23: "The Kentucky Minstrels." 9.30: Theatre Memories. 10.0: Sports summary. 10.10: Jay Wilbur and his Orchestra. 11.0: B.B.C. news; meditation music.

2YA Wellington 6.0, 7.0, 8.45 a.m.: B.B.C. music. 7.30: Breakfast session. 9.0: "Morning Variety." 10.0: Weather report. 10.10: Devotional service. 10.25: "Popular Melodies." 10.45: "Some Remarkable Women I Have Met." 11.0: "Something for Everybody." 12.0: Lunch music. 1.15 p.m.: B.B.C. news. 2.0: "Saturday Matinee." 4.0: Sports results. 5.0: Children's session. 5.45: Dinner music. 6.15: B.B.C. news. 6.55: Weather report. 7.0: News. 7.15: "Britain Speaks." 7.30: Reserved. 7.5: Louis Levy and his Orchestra, and Anne Luciano (soprano). 8.57: Weather report and station notices. 9.0: N.B.S. Newsreel. 9.20: Dance programme. 10.0: Sports summary. 10.10: Dance programme. 11.0: B.B.C. news; meditation music.

2YH Napier 7.0 a.m.: B.B.C. news. 7.30: Breakfast session. 8.45: B.B.C. news. 11.0: Light music. 12.0-2.0 p.m.: Lunch music. 1.15: B.B.C. news. 5.0: Light music. 5.30: For the Children. 5.45: Light music. 6.0: "Carson Robison and His Pioneers." 6.15: B.B.C. news. 6.45: Weather forecast; senior cricket results. 7.0: After-dinner music. 7.15: Topical War Talks. 7.30: "The Circle of Shiva." 7.42: Light music. 8.0: Boston Promenade Orchestra. 8.4: Recital by the Kentucky Minstrels. 8.18: "Schubert Waltzes." 8.27: Paul Robeson (bass). 8.38: Marek Weber and his Orchestra. 8.47: Millicent Phillips (soprano). 8.55: Minneapolis Symphony Orchestra. 9.0: N.B.S. Newsreel. 9.20: "Crimson Trail." 9.31-10.0: Light music.

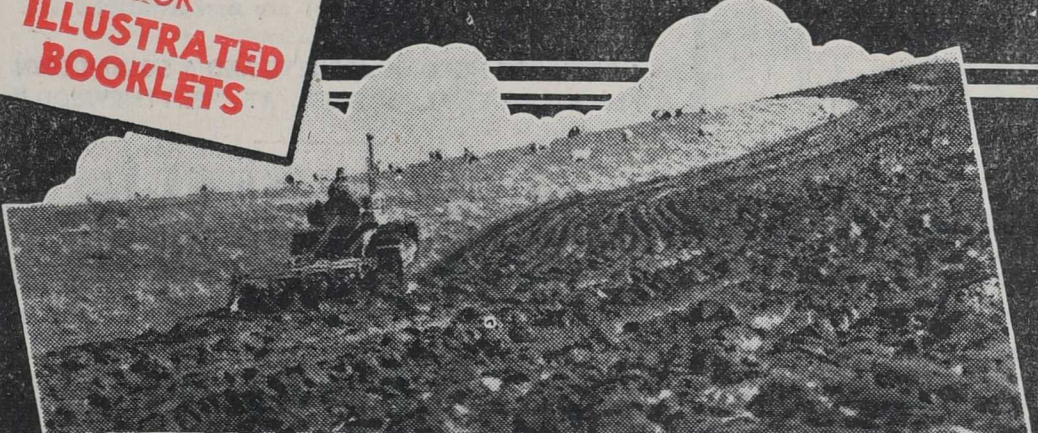
3YA Christchurch 6.0, 7.0, 8.45 a.m.: B.B.C. music. 7.30: Breakfast session. 9.0: "Morning Melodies." 10.0: Classical programme. 10.30: Devotional service. 10.45: "Hall of Fame." 11.0: "Mary Makes a Career." 11.10: Light orchestral session. 11.30: "Popular Henry FONDA plays Raft's devoted friend and reluctant enemy, and Dorothy Lamour, in her biggest dramatic role to date, will be seen as the typical gallant woman of the North country. Life is just one gay lark for John Wayne, happy-go-lucky cowhand in "Born to the West" Zane Grey story, which is the second feature, until he happens to drift into a cow town where his cousin, John Mack Brown, is the big power. Brown offers to give Wayne a job but the latter refuses—until he sees Marsha Hunt, and decides to stay awhile. In order to win the girl it becomes necessary for him to break up a rustler's band, expose a gang of crooked gamblers, head a cattle drive through dangerous country and to prove to Miss Hunt that he's a better man than his cousin.

1940 H.B. Spring Show = Oct. 23 & 24

"CATERPILLAR" REGISTERED TRADE MARK DIESEL TRACTORS

**INCREASED PRODUCTION
with BIGGER PROFITS**

WRITE FOR
ILLUSTRATED
BOOKLETS



PRESENT day farming conditions offer a challenge to obsolete farm power . . . and at times the question is asked: "How can the national necessity for increased production be met profitably?" Hundreds of farmers already have the answer. They are meeting the nation's requirements with "Caterpillar" Diesel Tractors, thus realising a double profit through increased production and the reduced operating costs of "Caterpillar" Diesel Tractors using cheap Diesel fuel. The "Caterpillar" range provides Diesel Tractors powered to operate with maximum economy for every class of work. Large Diesel Tractors for clearing Virgin Bushland to the "Caterpillar" D2, which ploughs with a Diesel fuel consumption averaging a gallon per acre. Gough, Gough and Hamer Ltd. invite you to write, stating your requirements, and they will provide detailed information that will be found valuable in deciding the most satisfactory method of working.

GOUGH, GOUGH & HAMER, LTD.

HEAD OFFICE - CHRISTCHURCH

Branches at: Auckland, Wellington, Dunedin, Timaru, Palmerston North, Stratford, Rotorua, Masterton, Hastings, Ashburton and Invercargill.

SEE EXHIBIT AT HAWKE'S BAY SHOW

CUSTOM has made the Hawke's Bay Agricultural and Pastoral Society's annual Spring Show a rendezvous for re-unions of friends, for gaiety, interest and colour.

Despite the difficult conditions which confronted the committee, this year's fixture will be no exception.

Entries in all sections are well up to those of last year, and in some cases the totals have been exceeded.

Trade exhibitors, responding readily to the need for support, will again contribute very largely to the success of the show with numerous varied displays, and the usual array of inviting side-shows will attract the passer-by in the amusement park.

Recognised for many years as the foremost event of its kind in the Dominion, the Spring Show promises to maintain its reputation on Wednesday and Thursday, October 23 and 24.

Already the A. and P. Society's courage in carrying on this great undertaking has been fully justified.

FARMERS!

WHITE'S IMPROVED SHEEP DIPPING FLUID

Is easy to use. It improves the wool, and is made in New Zealand.

Sold in 5-gallon tins at 8/- per gallon.
Sold in 1-gallon tins at 9/6 per gallon.

WHITE'S FOOTROT PREPARATION

Pronounced by experts the best remedy on the market. Has helped thousands of farmers.

Sold in 5-gallon drums at 12/- per gallon.
And 1-gallon tins at 15/- per gallon.

WHITE'S WEED DESTROYER

Recommended as a destroyer of Noxious Weeds. Keeps garden paths clean at low cost.

Sold in 5-gallon drums at 12/- per gallon.
And 1-gallon tins at 15/- per gallon.

Full particulars from your Merchant, or direct from the Makers:

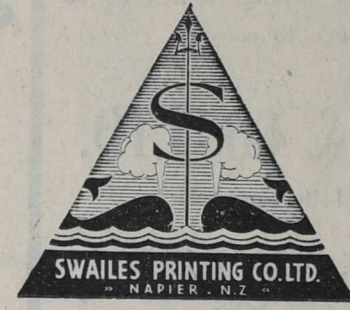
WM. WHITE & SONS

MANUFACTURERS
OTANE, HAWKE'S BAY

PRINTING

with ORIGINALITY

CATALOGUES
BROCHURES
LEDGERS
LETTERHEADS
and
ALL KINDS
of
COMMERCIAL
STATIONERY



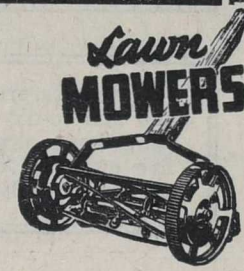
"THE MARK OF QUALITY"

SHOW CARDS
LABELS
CARTONS
CALENDARS
in
MULTICOLOUR
at
REASONABLE
RATES.

We extend an invitation to you to look over our factory, which is replete with the latest automatic machinery, and will prove of particular interest!

Swailes Printing Co. Ltd.

ART PRINTERS & BOOKBINDERS
P.O. Box 169 NAPIER Phone 2871



Lawn
MOWERS

Send it to . . .

J. A. THOMAS

KARAMU ROAD :: HASTINGS
(Opposite Thompson Motors)

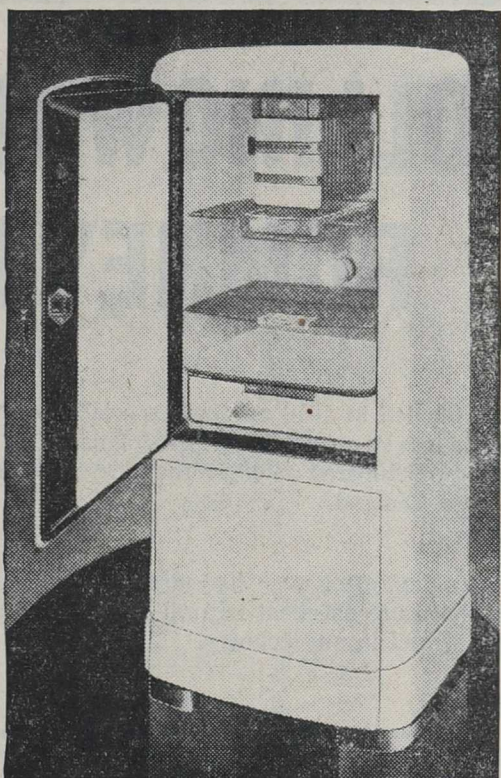
LAWNMOWERS CORRECTLY SET AND SHARPENED LIKE NEW!

ELECTRICITY IS CHEAPEST AND BEST

. . . FOR . . .

REFRIGERATION

COOKING



Stocks Of . . . KELVINATOR REFRIGERATORS

ARE NOW AVAILABLE

in any of the following colours at no extra cost:—
WHITE, IVORY, and PALE BLUE.

Cash Prices Range from—

£62 . 10 . 0

for the 4.75 c.ft. model

— to —

£112 . 10 . 0

for the 10 c.ft. model.

EASY TERMS:

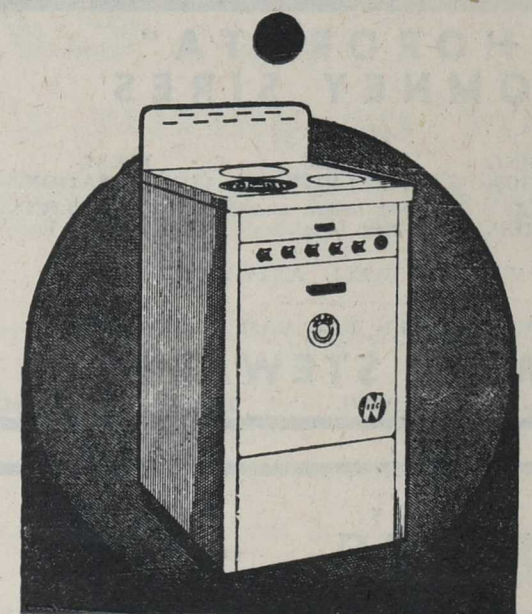
A SMALL DEPOSIT AND SMALL PAYMENTS WITH YOUR ELECTRICITY ACCOUNT WILL SECURE ONE OF THESE DE. LUXE REFRIGERATORS.

To Make Cooking a REAL PLEASURE

Invest in an

ELECTRIC RANGE

Electrical cooking is the modern, pleasant way of cooking. The pleasure of cooking in a fresh, cool kitchen, free from fumes, has to be experienced to be realised. And when you use a Neeco Electric Range you get electrical cooking at its best. The Neeco is economical—it cooks as fast as food can cook—thus saving current. The Neeco is clean—its straight line, modern design, and acid-resisting porcelain enamel make it simple to keep the range spotless. For economy and convenience you cannot do better than invest in a Neeco Electric Range. It will give pleasure to the whole family, for with Neeco cooking, meats are juicier, cakes and scones are more evenly baked, all food has a better flavour.



WE HAVE AMPLE STOCKS OF ELECTRIC RANGES

INSTALL ONE TO-DAY AND SAVE EVERY MONTH WITH THE LOW COOKING RATE

H.B. Electric Power Board

SHOWROOMS HERETAUNGA ST., HASTINGS

1940—Manawatu Spring Show—1940

WEDNESDAY & THURSDAY
November 6th and 7th

Studmasters Please Note! Livestock Entries Close on Wednesday, Oct. 23

SHOW RING ATTRACTIONS

WEDNESDAY:

£35 Provincial Inter-House Marching Competition **£35**
 Competing teams from Napier, Hastings, Hawera, New Plymouth, Levin, Palmerston North
 FIRST PRIZE £20, SECOND £10, THIRD £5.

Judging Saddle and Harness Horses

THURSDAY:

£38 Hunters' Jumping Championship **£38**
 Trotting Competitions

GRAND PARADE

There will be an outstanding exhibition of the very latest modern farm machinery.

SPEND YOUR SPRING HOLIDAY AT PALMERSTON NORTH!

VISITORS PLEASE NOTE: Business Premises are observing an Extra Half-Holiday on Wednesday from 1 p.m.
 For Schedules and all information apply to the Secretary—
 MISS A. PICKERING, P.O. Box 85, or 'phone 7610, Palmerston Nth.

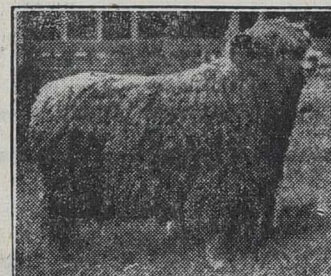
"KARERE" ROMNEYS & LINCOLNS

The large Romney flock of over 1600 ewes has been consistently bred for over 30 years and is well known throughout the Dominion.



A North Island Champion Ram bred at Karere

The "Karere" Lincoln flock was established two years ago and to-day consists of 130 select ewes. Three stud rams have already been exported to South Africa and five ewes to Australia. Flock rams from the stud are finding a ready market in various parts of the country.



A Champion Lincoln Ewe in the "Karere" Flock.

For prices, further details, and, if required, appointments for inspection, apply—

H. & M. W. VOSS
 "KARERE" **Longburn**

Why Not Place Your

DALGETY & CO. LTD.
STUD STOCK BUSINESS

... with the company that has the largest connections throughout Australia and New Zealand?

If you are buying or selling, it will be to your advantage to consult

DALGETY & CO. LTD.

(Incorporated in England)

STUD STOCK DEPARTMENT
 ALL BRANCHES

Headquarters:
 PALMERSTON NORTH.

And Here's Where **BEEF BULLS** Will Be Sold . . .

At each of the undermentioned Special Sales, First-class Beef Breed Bulls will be offered.

If you are unable to attend personally, use the services of Loan & Mercantile's Practical Experts, who will gladly assist in making selections, or purchase to your specifications.

Oct. 21—Annual Sale of "Woodlands" and "Abbotsford" Aberdeen Angus Cattle at Masterton.

Oct. 23—Annual Sale of Beef Breed Bulls at Hamilton.

Oct. 23—Annual Sale of Beef Breed Bulls at Feilding.

Oct. 31—Annual Sale of "Turihaia" Aberdeen Angus Cattle at Gisborne.

NEW ZEALAND LOAN & MERCANTILE

AGENCY CO. LTD.

(Incorporated in England)

BRANCHES AND AGENCIES EVERYWHERE.
 P.O. BOX 1498, WELLINGTON

YARDLEY PLOUGHS

MANY NEW FEATURES include:—Front wheels on swivel. Automatic lift. Fixed beams. Is reversible and can be used with horses or by tractor without alteration. Land wheel, level with front wheels, thus giving more length between front wheels and shares, making it impossible for plough to rise at the back.

PRIVATE PHONE 7326.

YARDLEY & SON

PLOUGH MANUFACTURERS

210 Rangitikei Street - PALMERSTON NORTH

"HORORATA" ROMNEY SIRE

NOTED FOR EARLY IDEAL CONSTITUTION, MATURETY, CONFORMATION. ENTIRELY REARED 1500ft. above SEA LEVEL. UNPAMPERED. WOOL QUALITY 46/48 COUNT.

WILL DO WELL ANYWHERE.

TOPPED HAWKE'S BAY RAM FAIR, 1937.

W. M. STEWART

RIDGE ROAD, R.D., FEILDING. Phone 14E, Kimbolton.

Kilgour's

"Matai Awa"

Romneys

1000 FEET ABOVE SEA LEVEL

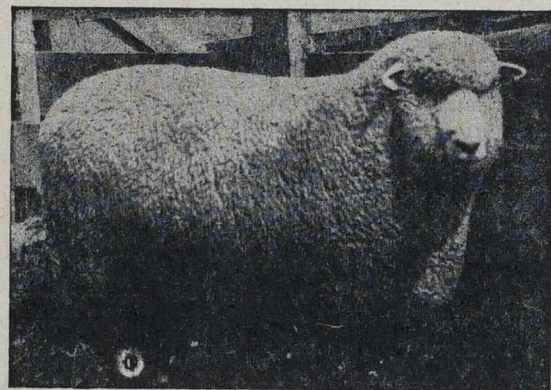
Founded in 1928 from famous New Zealand Studs, these sheep have been heavily culled and selected each year until to-day they represent the cream of the true Romney type. The rams are low set, compact, heavy-woolled sheep. Reared under perfectly natural conditions 1000 feet above sea level, they will thrive anywhere. Early inquiry is necessary each season.

A SELECT PEDIGREE SHORTHORN STUD IS ALSO REARED AT "MATAI AWA."

DAVID KILGOUR Jun.

KIWITEA

Private Bag, Feilding — 'Phone 686K, Feilding



The Kamano Top-Priced Ram, Feilding, 1939.

Stud Rams retained for Manawatu and West Coast Stud Sale at Feilding, January, 1941.

H. B. JOHNSTON PRIVATE BAG - FEILDING

KAMANO STUD Romney Flock

The first three "Kamano" Rams offered at the 1939 Feilding Stud Sale made 300, 190, and 210 gns. "Kamano's" total offering of 22 Rams sold in the ring for an average of 80 gns.—the best public sale of Romney Rams in New Zealand for 1939.

The 1940 offering of 22 Rams realised an average of 50 gns.

"Kamano" Romneys have consistently predominated the open Romney classes at the Feilding Show, and have won the points prizes ten times within the past fourteen years. At the 1939 Show the "Kamano" entries secured more points than all the other exhibitors combined.

"KAMANO" ROMNEYS INCORPORATE ALL THE NECESSARY ROMNEY QUALITIES.

"Bankhead" Romneys

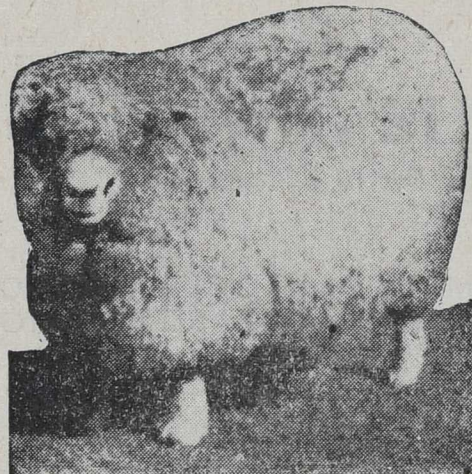
FLOCK No. 508

The home of this flock is situated at Kiwitea, over 1000 feet above sea level. Rams from this flock obtained top average and top price at the Feilding Flock Fair in 1940 and top average in 1934, 1935 and 1938. At the Feilding Stud Fair, 1938, Bankhead Romneys also obtained top price and average with an average of 103 guineas for 5 rams. Top average at Te Kuiti Flock Fair, 1938, for 32 rams.

SHOW RECORD

Winner of N.Z. Romney Marsh North Island Autumn Ram Championship Shield, 1935, 1936, 1937 and 1940; and Ewe Championship, 1938 and 1940.

Over a period of the last four Show seasons stock from this flock have secured at the following Shows—Palmerston North, Wanganui, Feilding, Dannevirke and Masterton—no fewer than 80 1st prizes, 34 2nd prizes, 29 3rd prizes, 20 championships and 8 reserve championships.



A "BANKHEAD"-BRED EWES.

Winner of 5 Championships, also N.Z. Romney Marsh North Island Show Championship Shield at Feilding, 1938.

PHONE 6740

Alexander Brown & Sons FEILDING

"BLYTHEWOOD" BERKSHIRES

The Stud is headed by
 WILLOW LODGE BARON (Imp.)

And the recently-imported English Sow

WHITLING AMELIA 21st.

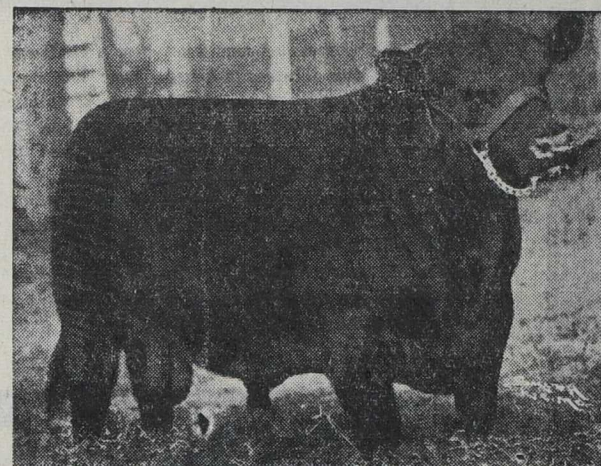
An English Royal Show winner and whose dams and grand-dams for generations have been Royal Show winners. Whitling Amelia 21st. was bred by Stephen Player, the leading English breeder of Berkshire Pigs.

A number of YOUNG BOARS and SOWS (progeny of the above) are now available.

A PEDIGREE HERD OF JERSEYS AND A SOUTHDOWN FLOCK TYPE ALSO BRED AT "BLYTHEWOOD."

J. A. RUSSELL
 PALMERSTON NORTH

"CANNOBIE LEA"



ABERDEEN ANGUS STUD

Home of Cattle of Great Constitution, combining Quality, Selectness of Breeding, and Grand Fleshing Properties.

ENCHANTER BARMAR

Our Imported American Herd Sire, first prize two-year-old 1937 N.Z. Royal Show.

Headed by **ENCHANTER BARMAR (imp.)**

He is by Barmar Quality (a double grandson of the greatest of all sires, Earl Marshall) from El Dara of Rose Hill 3rd, a great American breeding cow, who doubly descends from the famous Eston of Denison.

Companion Sire: **BENGAL OF WAITERENUI**
 Who represents a combination of choice imported blood and that of the original Flower. He is by Theme of Waiterenui (Ossian of Waiterenui—Twig of Ben Lomond) from Minerva of Waiterenui.

Outstanding Young Stock for Sale by both **ENCHANTER BARMAR (imp.)** and **BENGAL OF WAITERENUI**.

J. F. KNIGHT

Newbury :: Palmerston North

"COLLINGWOOD" ROMNEYS

Founded in 1910 on stock specially selected from the then best available studs, "Collingwood" Romneys are now numbered amongst the oldest and best flocks in New Zealand.

To-day, after over 30 years of scientific breeding, the sheep are excellent natural condition animals that will do well in any country.

SOME
 FIRST CLASS
 STOCK
 FOR SALE

E. W. COLLINS

NEWBURY, PALMERSTON NORTH

1940 H.B. Spring Show = Oct. 23 & 24

COMPREHENSIVE RANGE OF COMPETITIONS

Wednesday

Sheep	9.30
Cattle	9.30
Aberdeen Angus Cattle Judging Competition	9.15
Pigs	9.30
Entires for Harness Purposes, Pony Entires and Pony Brood Mares, Harness Horses and Harness Ponies (except Tradesmen's Turnouts), Saddle Classes Nos. 33 to 37	10.30
Implement, Machinery, and Vehicles	9.30
Fleece Wool	9.00
Poultry	9.15
Dogs (Kennel Section only)	9.15
All Indoor Exhibits unless otherwise stated	11.00
LUNCH	
Best Pony Driven by a Lady	1.45
Maiden Leaping Match	2.30
Pony Leaping Match (Maiden)	3.00
Pony Leaping (Girl Riders)	3.30
Harness Horses (Pace and Style)	4.00
Hunters' Competition (Open)	4.15

The usual comprehensive range of competitions is provided in the schedule for the Hawke's Bay A. and P. Society's Spring Show at Tomoana this year, and once again the event offers something to interest everyone.

For farmers, with their increased production drive in mind, the sheep and cattle classes will hold particular attraction, as will the displays of farm implements. For those interested in horse events, the jumping competitions have earned recognition as among the foremost in their class. Dogs, poultry, and stock of every description are similarly covered.

There is much, too, to interest townspeople in the produce hall, where, among many other interesting exhibits, the school children's classes will be displayed.

On either side will be found the programmes for each day of the show, Wednesday, October 23, and People's Day, Thursday, October 24, with the judging times for the various sections.

Thursday

Clydesdales, Working Draughts and Tradesmen's Turnouts	9.30
Entires and Brood Mares for Saddle Purposes	9.30
Progeny of Trotting Sire	10.00
Hacks and Cobs (Ladies and Gentlemen), Classes 38 to 52 Inclusive	9.30
Saddle Ponies and Children's Riding Competitions	10.00
Dogs (Working Section)	9.15
Wool Classing Competition	10.30
LUNCH	
Parade of all Dogs in Oval	1.30
Parade of Prize Cattle and all Horses to assemble at 1 p.m. and enter ring at	1.45
Pony Leaping Match (Boy Riders)	2.45
Champion Leaping Match	3.00
Ladies' Leaping Match (Open)	3.45
Consolation Leaping Match	4.15

For . . . **ECONOMIC SMARTNESS**

Elizabeth Horne

SHOWROOMS—
VILLA D'ESTE BUILDINGS,
Heretaunga St. W. - Hastings
— Telephone 2988 —

- ENCHANTING STYLES
- SOMETHING UNIQUE

a cool smoke...

NO MORNING COUGH!

. . . if you smoke
Toasted Cigarettes!

Less nicotine and therefore healthier. Slow burning and last longer!



Desert Gold

CIGARETTES



These delightful Cigarettes, made from the finest Tobacco, are still obtainable in packets of—

10 for 6d.

Also "Extra Special" Cork-tipped 25s for 1/6

NATIONAL TOBACCO CO. LTD.
PORT AHURIRI - - - NAPIER

SPORTSMEN! . . . CAMPERS!

Fishing Tackle, Guns, Golf and Tennis—everything for every Sport you'll find at LAND & HEIGHWAY'S in a most extensive range at wonderful Value Prices.



YOU'LL CATCH 'EM

ON TACKLE SUPPLIED BY US!

We cater fully for the Sportsman! Rods in stock include such well-known makes as Hardy, Allcock, Shakespeare, etc.

RODS From 12/6

REELS From 3/6

Complete range of Lines and Accessories.

TENNIS PLAYERS!

We have an excellent range of RACQUETS at prices to suit all.

If your Racquet requires RESTRINGING, bring it to us.

For the convenience of Country Customers, bring your Racquet in and we will Restring it while you are at the Show.



TENTS FOR YOUR CAMPING TRIP

We have them in every conceivable shape, size, and price.

Come in early and select your Tent! Think of the fun your family will have on a camping holiday.

Complete stocks of Camp Stoves, Stretchers Tables, Chairs, Cooking Gear, and Camp Equipment.



SEE OUR RANGE OF TAKAPUNA BACH AND CAMP FURNITURE AT THE SHOW

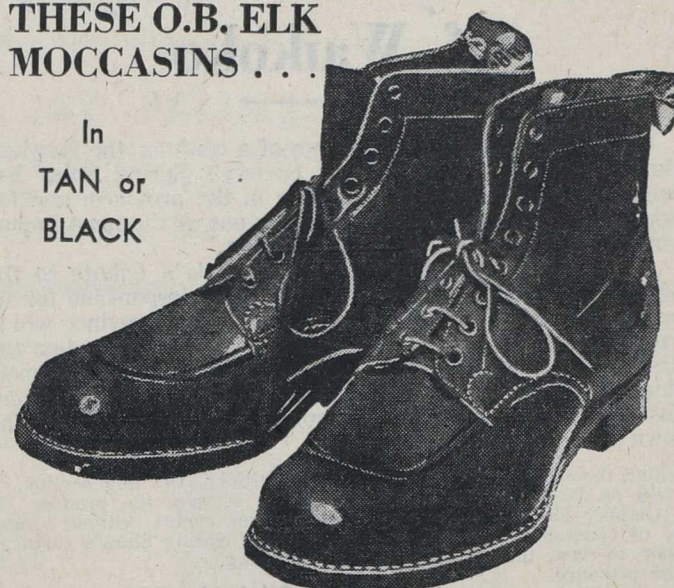
LAND & HEIGHWAY LTD.

NAPIER and HASTINGS

For Summer Work..

THESE O.B. ELK MOCCASINS . . .

In
TAN or
BLACK



Extremely comfortable boots with soft "viscolised" uppers which quickly mould themselves to the shape of the feet. These moccasins-fronted Cuckhams are firm favourites with many men. Obtainable with either leather or rubber soles.

C. GRIFFITHS

Hastings

EVERYTHING for the Garden!

Call in and Inspect our Complete Range of GARDEN REQUIREMENTS

HEDGE SHEARS
GRASS SHEARS
PRUNING SHEARS
SPRAY PUMPS

DIGGING FORKS
WEED FORKS
EDGING TOOLS
SHOVELS

TROWELS
RAKES
SPADES
HOES, ETC.

OUR SPRAYS WILL PROTECT YOUR GARDEN FROM ANY PESTS.



AGENTS FOR
"MASPORT"
LAWNMOWERS

N.Z.-Made Easy Pushing
Dependable Reasonably Priced

REMEMBER! STIPULATE
YATES RELIABLE SEEDS
FOR THE BEST RESULTS.
Fresh Seed in stock at all times.

HENRY WILLIAMS & SONS, Ltd.

NAPIER

FOR ALL HARDWARE

HASTINGS

WILLIAMS & KETTLE LTD.

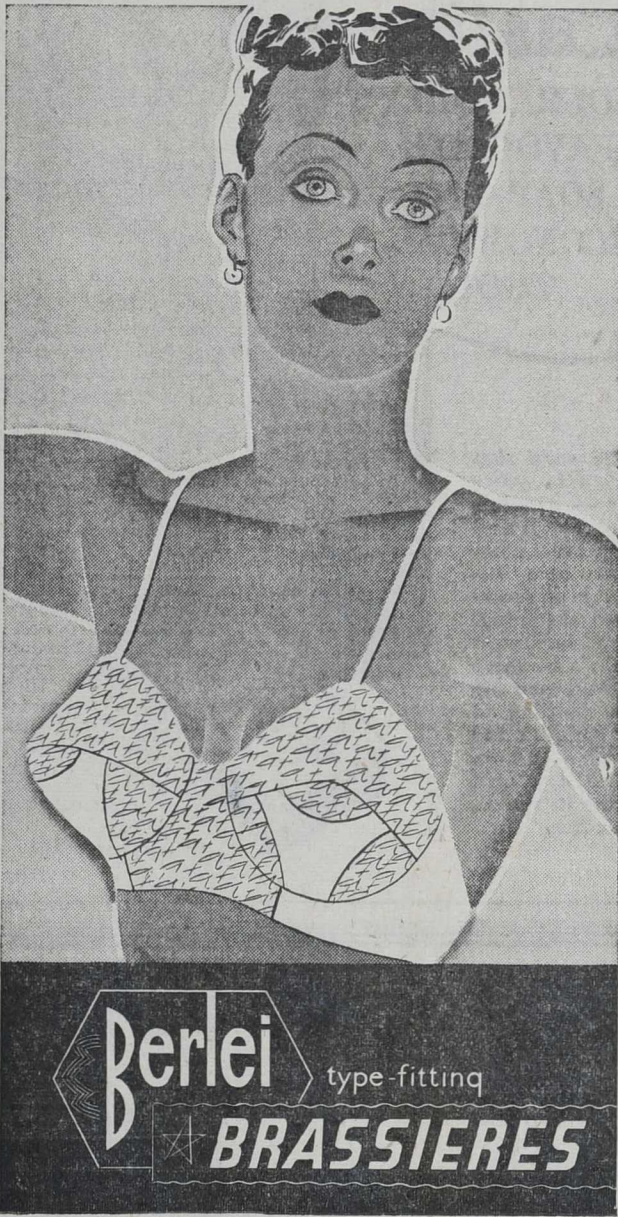
Wool Brokers - Stock and Station Agents - General Merchants

We solicit your enquiries for Stud Stock

Our Stock Agents will be in attendance at the Hawke's Bay A. & P. Show, and will give prompt and careful attention to your requirements.

Head Office:—NAPIER. Branch Offices at Hastings, Waipawa, Waipukurau, Dannevirke, Wairoa and Gisborne.

ALL EYES ARE ON BOSOMS!



"Affectionately Yours..."

Fashion insists you shall have a bosom that is definitely a bosom. And Berlei makes the brassiere that makes the bosom.

Berlei sculptures it to follow the exact swell and fall of the curves of your own particular type of bosom.

So... Berlei makes seven different fittings for your bust size, one of them yours—and yours alone. To fit like a nickname.

Diaphragm bands of varying depth keep you flat as a palm in front; special supports protect the frail tissues from sag and strain.

Truly, you'll find your bosom friend in Berlei!

Berlei type-fitting BRASSIERES

THE NEW WAY TO BUY YOUR BERLEI. Now you can buy your Berlei brassiere just as you do your shoes, gloves, frocks...



Honey For The Navy GARDEN FETE FUNDS

Many Attractions For Everyone AT WOODFORD HOUSE

The idea of buying New Zealand honey to send to the navy is an excellent thought which will be put into practice as a result of the Garden Fete to be held at Woodford House, Havelock North, on Saturday, November 2.

The scheme was outlined by Miss Holland, the principal of Woodford House at a meeting of the fete committee and stall holders which was held at the H.B. Farmers' committee room, Hastings, yesterday afternoon.

Miss Holland said that the school was a constituted branch of the Navy League, affiliated to the Auckland branch and she had therefore been able to arrange the scheme of sending N.Z. honey overseas through the Auckland branch.

Mrs Masterson presided at the meeting. The secretary, Miss Ruth Small, reported various arrangements which had been made.

The Mayor of Hastings, Mr G. A. Maddison, had consented to open the fete at two o'clock and it was decided to arrange a bus service from Hastings to Woodford House to enable many hundreds of people from all over the district to avail themselves of an opportunity of seeing the beautiful grounds, patronising the stalls for present needs and Christmas gifts.

Perspiration stains which show on the shoes can often give an indication of health conditions. If a white deposit on the upper is noticeable it often indicates a diabetetic tendency.

Five o'Clock Gossip

Mr and Mrs N. Blackmore, Victoria Avenue, Palmerston North, and Miss E. D. Laing are spending two weeks in Napier.

Mrs J. Wakelin is a Carterton visitor to Napier.

Mr and Mrs T. Alston Coleman and Mr and Mrs E. S. Baker, Gisborne, are visiting Napier.

Mr and Mrs J. Dodds are Christchurch visitors to Napier.

Mrs H. E. H. Aplin, Wellington, is the guest of her son-in-law and daughter, Mr and Mrs H. Russell Moss, Napier.

Mr and Mrs A. T. Spain, Bluff Hill, Napier, who have been the guests of Mrs F. S. Bowen, "Marataha," Muriwai, are now staying in Auckland with Mrs Reedy, Remuera.

Miss H. G. Smallbone, senior tutor sister of the Napier Hospital, has been appointed sub-matron of the Waikato Hospital, in place of Miss E. G. Jenkins, who is now matron of the Tauranga Hospital.

Many friends in Otane of the late Mrs Driver learned with regret of her death at Hikurangi. While living in Otane with her son-in-law and daughter, Mr and Mrs R. Thompson, during Mr Thompson's period as headmaster of the Otane School, her cheerful nature made her a close friend of many of the people.

To develop the bust, exercise is naturally the best method, but massage will also help. Smooth the oiled palm of the hand over the chest with light pressure, taking care not to actually massage the bust itself.

It saves a lot of time if there is a neat, portable first-aid box always kept in the same place in the house. And such an outfit can easily be made from two knife-boxes. If there are no disused ones in the home, they can be bought very inexpensively.

Before setting out for Tomoana we have but to remember the Red Cross tent—to bring with us some article for sale and on arrival to deliver it at the tent which will be found between the Produce Hall and the Plunket Rooms.

A pine bath can be prepared by adding one ounce of pine to your ordinary bath water. Pine baths are true beauty givers.

Recibes for the Enterprising Housewife

Milk Puddings Are Appreciated With Fruit In Warmer Weather

TAPIOCA PUDDING

Take 2 tablespoonfuls tapioca, 1 pint milk, 1oz. sugar, 1oz. butter, 1 egg, a little grated nutmeg.

RICE PUDDING

Take 2 small tablespoonfuls rice, 1 pint milk, 1 oz. sugar, 1 oz. butter, a little grated nutmeg.

SAGO CREAM

Take 3 cup sago, 2 cups milk, 2 tablespoonfuls sugar, 2 eggs, pinch of salt, few drops vanilla, 1 teaspoonful butter.

COCONUT PUDDING

Take 2 cupfuls milk, 2 1/2 tablespoonfuls each of flour, sugar and desiccated coconut, 1 tablespoonful butter, the grated rind of a lemon, 2 eggs, pinch of salt, 1 tablespoonful of sugar for meringue.

CORN FLOUR PUDDING

Take 1/2oz. cornflour, 1 pint milk, flavouring, 1oz. sugar, 1 egg.

MACARONI PUDDING

Take 2ozs. macaroni, 1 pint of milk, 1oz. sugar, pinch of salt, 1 egg.

MILK JELLY

Take 3 pint milk, a strip of lemon rind, 1oz. gelatine, 1 tablespoonful of water, 1oz. sugar, 1 tablespoonful cream.

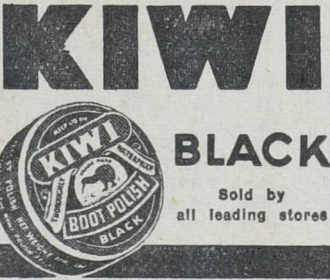
BAKED CUSTARD

Take 2 eggs, 1 pint of milk, pinch of salt, 1 oz. sugar, flavouring.



BETTER— BY MILES!

Shoes last miles longer and look miles better, when polished regularly with KIWI BLACK.



MISS A. PLUMLEY late of DAPHNE, Specialist in Lingerie, Children's Dresses, and Smocking.

The older women can disguise wrinkles by keeping the rouge close up under the eyes.

The longest love letter in the world is on view at the British Museum. It was penned by one of Queen Elizabeth's courtiers to his lady love and it covers four hundred closely written pages.

Stockings must fit the feet. If they are too large they will wrinkle beneath the foot and around the toes, and the hard ridges of fabric will rub the tender flesh into painful areas.

The way always opens for the determined soul, the man or woman of faith and courage. It is the victorious mental attitude, the consciousness of power, the sense of mastery, that does the big things in this world.

MEN! WE CAN SUIT YOU FOR THE SHOW! CHOOSE FROM OUR GREAT SELECTION — THE LARGEST WE HAVE EVER SHOWN! SAVILLE SUITS, BRIGHTON SUIT, MEN'S TWO PIECE SUITS, FLANNEL SUITS, MEN'S SPORTS COATS, MEN'S SPORTS TROUSERS

A Call To Arms HAVELOCK NORTH RED CROSS TENT AT SHOW. One of the most beautiful things in life is to see how quick and generous is the succour given to a wounded comrade by a soldier who himself is not wounded at all, or in a much less degree.

Gibbs Dentifrice. NOTICE TO HOUSEWIVES... For Greater Food Value at Lower Cost—Use More BOURNVILLE COCOA IN YOUR COOKING

THINK what this means to your housekeeping budget! Use more Bournville Cocoa and cut down on more expensive energy foods...

NO RISE in the Price of BOURNVILLE COCOA. Ample Stocks Available

See! oh! WAXSHINE. WHAT A SHINE. Gives a quick, lasting brilliance to linos, furniture, motor cars, etc.

Gill & Fenton Limited. FURNISHERS Market St. Hastings

FOR THE MATRON W.X. and O.S. fitting ATTRACTIVE FROCKS, COATS AND SUITS FOR ALL OCCASIONS. VICTOR GOWNS

RETYLING — your FUR COAT ALL FUR REPAIRS BRING TO US. ZALAS ★ ZALAS THE PREMIER FURRIERS OF HAWKE'S BAY HASTINGS

BRING YOUR SOFT FURNISHING PROBLEMS TO US! We are Specialists. THE HOME ART CO. EMERSON ST. : NAPIER

Guaranteed RESTFUL SLEEP. That's what you get with BETTEL'S PAIN POWDERS, be returned by BETTEL, Chemist, Christchurch.

MR H. M. BENNETT F.S.M.C., F.I.O., F.I.O.N.Z. MR BROMLEY M. BENNETT F.S.M.C. (Hons.), F.B.O.A. (Hons.) F.I.O. OPTICIANS HASTINGS STREET, NAPIER

VILLA D'ESTE SALON. Have your hair permanently waved by the method best suited to its individual requirements.

FOR THE SHOW! NAVY, WHITE AND BLACK STRAWS, large and small shapes; also all colours in Felts for your Show Suits. SALON JOSEPHINE HASTINGS ST., NAPIER

DEVELOP NEW ZEALAND. IMPORT RESTRICTIONS don't worry Housewives who use

"LION" SAUCES TOMATO and WORCESTERSHIRE. Only the finest ingredients are used in "Lion" Products.

W. PLOWMAN & SONS LTD. NAPIER

PSYCHIC DIAGNOSIS AND HEALING. The NATURAL way for the cure of ALL ILLMENTS. So-called incurables welcomed.

FIRST WITH THE LATEST! Join Our Progressive and Modern Library to Get the Latest Novels. OXFORD BOOK CLUB NAPIER

