



NAPIER OPERATIC SOCIETY INC.  
PRESENTS

NEIL SIMON'S

NEW VERSION OF

The  
**CODD**  
Couple



TABARD THEATRE, NAPIER

25 NOVEMBER - 11 DECEMBER 2004



The Napier Operatic Society is delighted to welcome you all to another Restaurant Theatre Production



**THE TABARD THEATRE NEEDS YOU!**

Have you considered becoming a member of the Napier Operatic Society, which boasts an active and progressive social club?

**YOU WILL BE ASSURED OF A WARM WELCOME**

If you require further information visit our website or feel free to speak with one of our members

**Active and subscribing membership forms available at the:**

- Reception desk
- Camelot lounge bar
- Costume hire
- Napier Municipal Theatre

## NAPIER OPERATIC SOCIETY INC

By arrangement with The Play Bureau New Zealand Ltd.

Presents Neil Simon's New Version of  
THE ODD COUPLE

Directed by Sylvia Richardson

"The way I see things, life is both sad and funny. I can't imagine a comical situation that isn't at the same time also painful. I used to ask myself: What is a humorous situation? Now I ask: What is a sad situation and how can I tell it humorously?"

*Neil Simon*

Do you recall the enjoyment of sloppy Oscar and finicky Felix in the male version of "The Odd Couple" Why not have equal enjoyment with their counterparts, sloppy Olive and finicky Florence.

Just how far can you push friendship?

Come along and watch their life together with the support of their "Trivial Pursuit Pals" (females) and the delightful males in the upstairs unit!!



## PRESIDENT'S MESSAGE

### Lesley Reid



Welcome to the Tabard Theatre, the Napier Operatic Society has great pleasure in bringing you this performance of "The Odd Couple" - female version. Refreshing indeed is an old play with a new twist, which is what Napier Operatic has done with the "Odd Couple" by producing the new version of the Neil Simon classic. This production is brought to you tonight after months of planning, hard work and determination by many people, who have been determined to bring to you, our patrons, a production of the very high standard to which you are accustomed.

We are privileged to once again have Sylvia Richardson, with her experience and expertise, direct this production. She has brought together an outstanding cast, and we are grateful to Sylvia for her dedication to the Napier Operatic. Sylvia last directed for the Society in 2003, with her production of "Annie", and it has been our pleasure to work with such a talented director again.

On behalf of the Napier Operatic Society, I thank you, our audience, for your ongoing support, as always you are our lifeblood. We would also like to thank our Principal Sponsor, Esam Cushing & Co, for their support again in 2004. Thanks also to supporting sponsors Riverside Wines, The Napier Municipal Theatre, Ellingham Holdings, Century Foundation and Blue Water Hotel for their generosity; together with Esam Cushing they enable us to bring to you this great night's entertainment.

Sit back and enjoy!

## DIRECTOR

### Sylvia Richardson



Once again, Sylvia wishes to acknowledge the professional and artistic commitment of Napier Operatic Society, plus the extremely hard working and talented cast and crew of Neil Simon's "The Odd Couple" and trusts you will enjoy her vision of this hilarious play.

Sylvia has worked in local theatre for the last 28 years and has truly enjoyed every experience. She is extremely proud of her performances for Napier Operatic Society's "Annie" (1983), "Chicago", "Tom Jones", "Canterbury Tales", "Les Miserables" (1995) and "Dirty Weekends" and her directing credits 1996 and 1999 Music Halls and "Annie" (2003).

Sylvia has also acted or directed numerous productions for Napier Repertory, Group Theatre, Theatre Hawke's Bay, Frivs and Centre Stage Taupo. She is proud and grateful for the love and encouragement of her family and believes Hawke's Bay is truly blessed with theatrical talent.



*"Please turn off all cellphones during the performance"*

# MENU

Tender Pork Medallions with Orange Sauce

New Minted Potatoes

Mesculin Salad with Baby Beetroot

Fresh Steamed Asparagus

## DESSERT

Brandy Snaps filled with  
Whipped Berry Couli Cream and topped with  
Chocolate Dipped Strawberries



## WINE



### RIVERSIDE SAUVIGNON BLANC

Invitingly fruity notes of pineapple and gooseberry  
greet the nose followed by refreshing citrus  
flavours that linger in the mouth. A truly  
satisfying experience.

### RIVERSIDE CHARDONNAY

The aromas lead you into this wine, tempting  
you to take the next step, where you will find  
a powerful combination of fruit and subtle  
oak on the palate. It has a hot finish with  
lasting creamy and stone fruit characters  
which fashion a very drinkable wine.

### RIVERSIDE CABERNET MERLOT

A complex palate of cedar and plums  
leading through to coffee and cassis.  
A soft round lingering finish.



### RESTAURANT MANAGER:

Sonya Aifai

### HOSPITALITY MANAGER:

Kaye Tristram

### HOSTESSES:

Yvonne Arrowsmith

Philippa Jones

Judy White

### FRONT OF HOUSE MANAGERS:

John Briggs

Tessa-May Brown

Ian Reid

Lesley Reid

Peter Shepherd

### IN ADDITION:

A TABLE SERVICE CASH BAR  
WILL BE OPERATING FROM THE  
RESTAURANT THEATRE AREA.



## CLIVE RALPH PHOTOGRAPHER

M.Photos. NZIPP

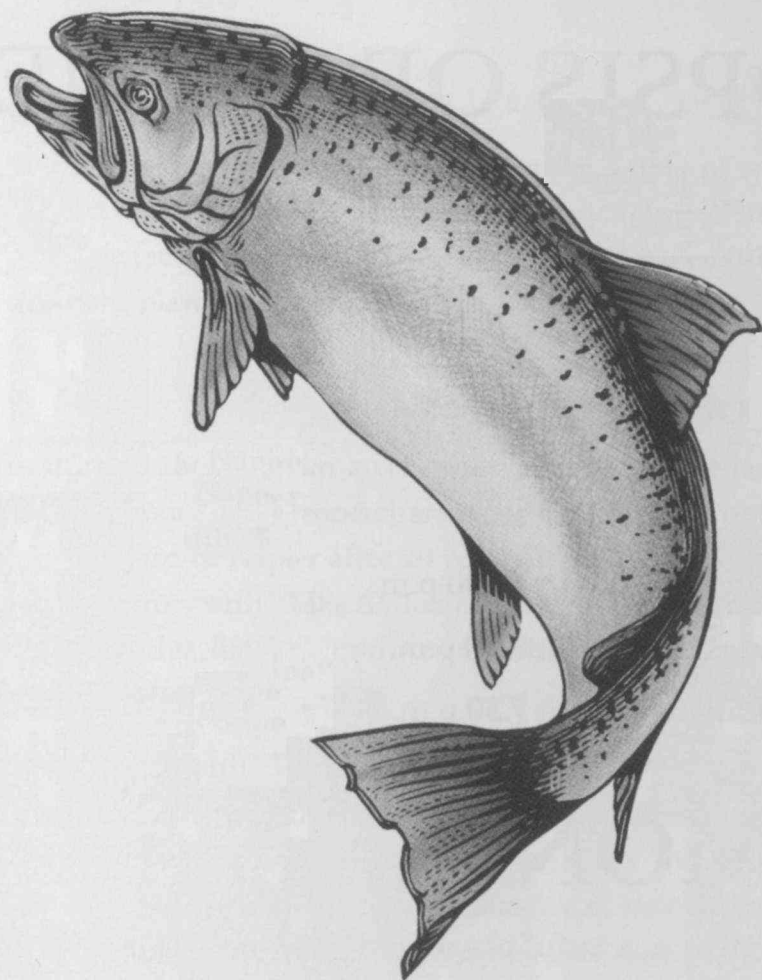
Studio: 17 Cathedral Lane, Napier

Postal Address: 5 Elizabeth Rd, Napier

Phone: (06) 835 7204 Fax: (06) 835 7304 Mobile: (025) 439 865

Email: [clive.ralph@xtra.co.nz](mailto:clive.ralph@xtra.co.nz)

**Supporting the Napier Operatic Society &  
the Odd Couple at Riverside Drive**



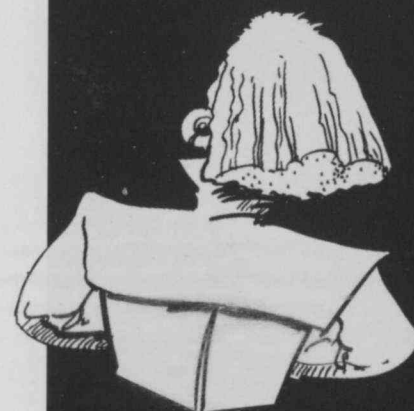
# *Riverside Wines*

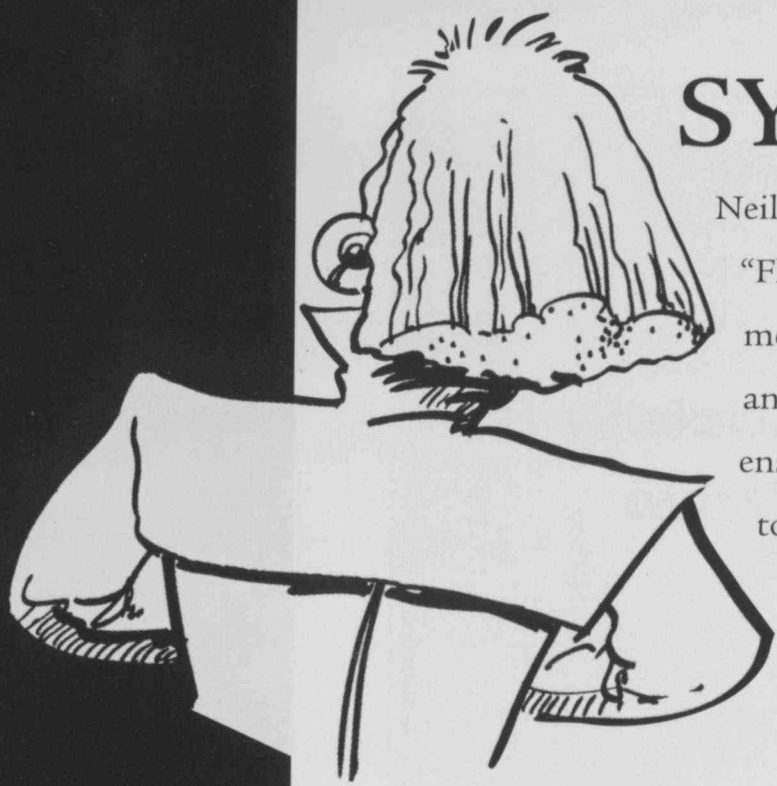
***the wine friends recommend to friends***

**Riverside Wines, 434 Dartmoor Road, Puketapu, Napier**

**Phone: 06 844 4942, Fax: 06 844 4671**

**[info@riversidewines.co.nz](mailto:info@riversidewines.co.nz), [www.riversidewines.co.nz](http://www.riversidewines.co.nz)**





# SYNOPSIS

Neil Simon's update of *THE ODD COUPLE* has transformed "Felix" into "Florence Unger" and "Oscar" into "Olive Madison". Recently divorced, the very messy Olive, who produces a prime time news show, invites the suddenly single and compulsively neat, at-home Mom, Florence, to move in with her. Hilarity ensues as Florence and Olive are quite possibly the most mis-matched pair ever to live under the one roof. Their weekly Trivial Pursuit game-playing buddies are appalled at the turn of events and the much anticipated dinner date with Olive's neighbours, the very dashing Castilian Costazuela brothers, has some very funny results.

## SYNOPSIS OF SCENES

**Time:** 1980's

**Place:** Olive Madison's Riverside Drive apartment

### ACT 1

A hot summer's night

### ACT II

Scene 1 Two weeks later: About 11.00 p.m.

Scene 2 A few days later: About 8.00 p.m.

Scene 3 The next evening: About 7.30 p.m.

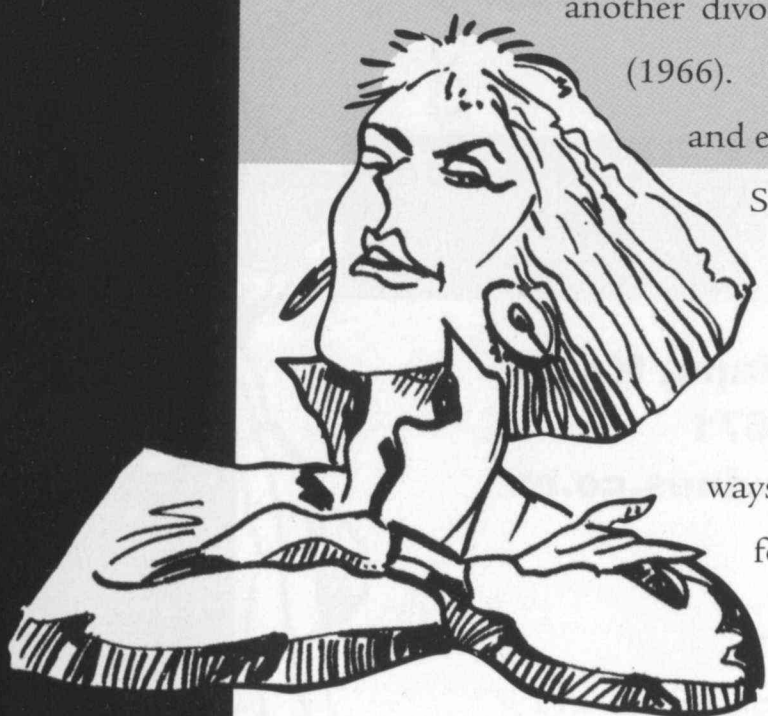
## NEIL SIMON

Neil Simon is the world's most successful playwright. He has had dozens of plays and nearly as many major motion pictures produced. He has been showered with more Academy and Tony nominations than any other writer and is the only playwright to have four Broadway productions running simultaneously.

Simon's brother, Danny, played a major role in his writing. After his divorce, Danny moved in with another divorced man and this situation became the set-up for "The Odd Couple" (1966). Though Danny had begun writing the story himself, he reached a block and eventually handed it off to Simon who soon made it a smash on Broadway.

Starring Jack Lemon and Walter Mathau, the 1968 film version was equally successful and prompted a popular television series.

Neil Simon's gender-switch rewrite, which premiered on Broadway in 1985 (twenty years after the original), outclasses the old script in many ways. The most effective changes can be ascribed to his reworking the script for women. "I like writing women very much" Simon said in an interview the same year the female version opened. "Men are more closemouthed about their real feelings, whereas women, if the situation is right, open up" (*The New York Times Magazine*, 26 May, 1985).





**BIRGITTA SOLLMAN-WEST**

Birgitta has been performing on stage, both in the UK and NZ since she was eight years old. As Head of Drama at Taradale High School, she enjoys both teaching, directing and practising the performing arts herself. Birgitta has worked with Sylvia Richardson in several drama productions over recent years, including "Rough Justice" and the original "The Odd Couple" in 2000.

**DAVID GLENDAY**

David, a late developer, was introduced to the Napier Theatre world by accepting the position of Treasurer of Napier Repertory Players and he has recently graduated from this position to appearing on stage in two recent successful productions with Rep. David has lived in Napier for over 30 years and is enjoying meeting so many keen and talented people. Working with Sylvia again is another highlight plus renewing friendships with other cast members. Olé!



**JANE SUTHERLAND**

Jane specialises in playing women who serve cups of tea and like to dust a lot. In "Take a Chance On Me" at Napier Repertory way back in August, Jane played a variety of manic female roles. The theme continues with the obsessive compulsive Florence, a role she played in 2000.

**DAVE RICHARDSON**

Dave has been involved in music and theatre from a very young age. For the last five years he has been Australasian demonstrator/concert artist for Yamaha electronic musical instruments. Recently returned to Napier after 20 years, he jumped straight back into local theatre at Napier Repertory with "Take A Chance On Me" and is pleased to be involved in this, his first production at the Tabard Theatre.



**SHARRON PARDOE**

Sharron is relishing the opportunity to play drama queen "Mickey the Cop". She has been involved with theatre since she was a child, performing in Wellington and Hawkes Bay and is enjoying the challenge of this comedy. Sharron thanks her late Mother, Maire, for instilling in her a love of drama and her family for their love and support.

**AMANDA JACKSON**

From silly, tearful blonde in "Take A Chance On Me" to silly, dumb blonde in "The Odd Couple" was easy, and from insane, murderous daughter in "Beauty Queen of Lenane" to insane, crippled mother in "Sweeney Todd" was easy, but the easiest transition of all was from Napier Repertory to Napier Operatic. There only has to be a stage.



**ELEANORE McLEAN**

Eleanore was involved with Napier Repertory and Mugwort when she left high school. Her interest was rekindled when she played Eleanore in Roger Hall's "Take A Chance On Me" earlier this year and she is thrilled to be directed by Sylvia again in "The Odd Couple".

**KERRY UNSWORTH**

Kerry has enjoyed playing a variety of musical and dramatic roles in over 22 productions locally and in Auckland since first playing "Sandy" in "Grease" for Napier Operatic. After her last role as "Grace" in "Annie" last year, she is delighted to work once again with Sylvia Richardson and be part of such a strong cast.



# PRODUCTION TEAM



Alan Jones STAGE DIRECTOR	Peter Eade CO-LIGHTING MANAGER	Raymond Gempton HAIRDRESSER	Anita Davies PROMPT	Clare Allington PROPS MANAGER
Norah Griffin PRODUCTION MANAGER	Colin Pritchard SET CONSTRUCTION MANAGER	Maria Peta WARDROBE MANAGER	Anthony Gouder CO-LIGHTING MANAGER	Gail Jones STAGE MANAGER
				Donna O'Shaughnessy SUPPERS

## PRODUCTION PERSONNEL

<b>BOOKING OFFICERS</b>	Dale Reid, Gail Jones
<b>FOYER &amp; TABLE DECORATIONS</b>	Yvonne Arrowsmith
<b>PROGRAMME</b>	Sonya Aifai, Norah Griffin, Darryl Mitchell
<b>PROPERTIES TEAM</b>	Chris Cheyne, Chris Kenah, Joanne Liddy Michelle Winter
<b>PUBLICITY TEAM</b>	Sonya Aifai, Barbara Brown, Jeff Foley Anthony Gouder, Donald Hurley, Gail Jones, Karen McLean, Dale Reid, Kaye Tristram
<b>REHEARSAL PHOTOGRAPHER</b>	Christine Hannah
<b>SET CONSTRUCTION/ STAGE CREW &amp; PAINTING</b>	Clive Buttery, Alan Holt, Alan Jones, Eric Richardson Ian Scott
<b>SIGN BOARDS</b>	Oliver Christoffersen, Theatre School Children & Society Members
<b>SPONSORSHIP</b>	Dale Reid
<b>SUPPERS &amp; REFRESHMENTS</b>	Ngairé Boyce, Pam Christensen, Annette Clifford Lynne Gibson, Bev O'Neill
<b>WAITERS &amp; WAITRESSES</b>	Friends of the Society
<b>WARDROBE TEAM</b>	Josie Bell, Margery Gurney, Gail Jones Adrienne Parsons

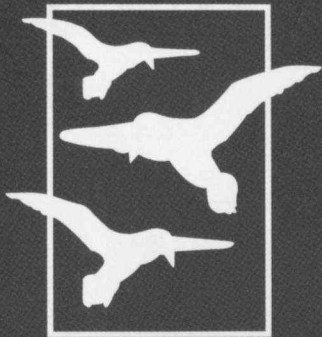


*First Rate & Up-to-Date*  
**HIRE SERVICES**

COSTUME HIRE - LIGHTING HIRE - SOUND HIRE  
ALL AVAILABLE THROUGH THE TABARD THEATRE

Telephone 06 8358775 Website: [www.nos.org.nz](http://www.nos.org.nz)





# Bluewater NAPIER Hotel

## SPORTZ BAR

GIANT SCREEN - T.A.B.

CASINO

RESTAURANT & CONFERENCE FACILITIES



**45** SPA  
UNIT

**FAMILY  
STUDIO SUITES**

Wonderful sea views

**NAPIER • HAWKE'S BAY**

Reservations Freephone 0508 NAPIER (627 437)



# OFFICERS OF THE SOCIETY

PATRON

Peter Cox

PRESIDENT

Lesley Reid

VICE PRESIDENT

Darryl Mitchell

IMMEDIATE PAST PRESIDENT

Neill Page

SECRETARY

Tessa-May Brown

TREASURER

Fiona McKay

HONORARY SOLICITOR

John Matthews

HONORARY PHOTOGRAPHER

Clive Ralph

## EXECUTIVE COMMITTEE

CHAIRMAN

Jonathan Krebs

COMMITTEE

Sonya Aifai, Clive Buttery, Mary Crook, Jeff Foley  
Anthony Gouder, Norah Griffin, Alan Jones  
Irene McKinnon, Colin Pritchard, Kaye Tristram

LIFE MEMBERS

Gwyn Ace, Cliff Allen, John Briggs, Barrie Browne  
Lyndsay Browne, John Collier, Gillian Davies  
Peter Eade, Donald Hurley, Alan Jones, Brian Nathan  
Colin Pritchard, Lois Reefman, Ian Reid  
Les Robertson, Peter Shepherd, Fred Twyford  
Dawn Unsworth, Ros van de Ven

### ACKNOWLEDGEMENTS

Marjory & Keith Allington, Blue Water Hotel  
Century Foundation, Selwyn Cook  
Ellingham Holdings, Esam Cushing  
Horizon Advertising, Amanda & Philip Jackson  
S.W. Jones & Co. Ltd., Langley Twigg  
Napier Municipal Theatre, NOS Social Club  
Clive Ralph, Raphael Furnishing Studios  
Dave Richardson

*And all of those who have participated and contributed in ways large and small, the Society and Company of The Odd Couple wish to extend their sincere gratitude.*

Yamaha Clavinova digital piano supplied by

**Kingdom Music** ...LET THE MUSIC PLAY

## CHILDREN'S THEATRE

The Napier Operatic Society Theatre School welcomes

Children from the ages of 5 - 15 years

Contact: Irene McKinnon - Phone: 835 7216

On stage & technical experience - Monthly workshops - Annual production



Napier Operatic Society  
*presents*

“The World’s Best  
Loved Musical”



# My Fair Lady

*Book and lyrics by Alan Jay Lerner Music by Frederick Loewe*  
Adapted from Bernard Shaw's Play and  
Gabriel Pascal's motion picture 'PYGMALION'

Napier  
Municipal  
Theatre

Hawke's Bay  
Performing  
arts



The Napier Municipal Theatre  
proudly hosts the season of  
'My Fair Lady' - March 2005

NEED ADVICE

INVESTING

The  
**ODD**  
Couple

OF DOLLARS?



Then talk to us  
We can make sure its 'Odds on'  
You come out well ahead of 'Even'

ESAM  CUSHING

127 Queen Street East, P. O. Box 241, Hastings, New Zealand

Telephone: (06) 876 8129, Fax: (06) 878 5059

Email: [esam@esamcushing.co.nz](mailto:esam@esamcushing.co.nz), Website: [www.esamcushing.co.nz](http://www.esamcushing.co.nz)



# THE ODD COUPLE

Written by Neil Simon  
Directed by Sylvia Richardson



## SYNOPSIS

Neil Simon's update of *THE ODD COUPLE* has transformed "Felix" into "Florence Unger" and "Oscar" into "Olive Madison". Recently divorced, the very messy Olive, who produces a prime time news show, invites the suddenly single and compulsively neat at-home Mum, Florence to move in with her. Hilarity ensues as Florence and Olive are quite possibly the most mis-matched pair ever to live under the one roof. Their weekly Trivial Pursuit game-playing buddies are appalled at the turn of events and the much-anticipated dinner date with Olive's neighbours, the very dashing Castilian Costazuela brothers, has some very funny results.

## CAST OF CHARACTERS

Birgitta Sollman-West	OLIVE
Jane Sutherland	FLORENCE
Amanda Jackson	VERA
Eleanore McLean	RENEE
Sharron Pardoe	MICKEY
Kerry Unsworth	SYLVIA
Dave Richardson	MANOLA
David Glenday	JESUS

## NEIL SIMON

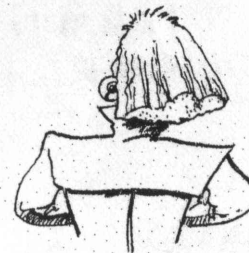
Neil Simon is the world's most successful playwright. He has had dozens of plays and nearly as many major motion pictures produced. He has been showered with more Academy and Tony nominations than any other writer and is the only playwright to have four Broadway productions running simultaneously. Simon's brother, Danny played a major role in his writing. After his divorce, Danny moved in with another divorced man and this situation became the set-up for "The Odd Couple" (1966). Though Danny had begun writing the story himself, he reached a block and eventually handed it off to Simon who soon made it a smash on Broadway. Starring Jack Lemon and Walter Mathau, the 1968 film version was equally successful and prompted a popular television series.

## SYNOPSIS OF SCENES

Time: 1980's  
Place: Olive Madison's Riverside Drive apartment

ACT I  
A hot summer's night

ACT II  
Scene 1 Two weeks later About 11.00pm  
Scene 2 A few days later About 8.00pm  
Scene 3 The next evening About 7.30 pm



Neil Simon's gender-switch rewrite, which premiered on Broadway in 1985 (20 years after the original), outclasses the old script in many ways. The most effective changes can be ascribed to his reworking the script for women. "I like writing women very much" Simon said in an interview the same year the female version opened. "Men are more closemouthed about their real feelings, whereas women, if the situation is right, open up" (*The New York Times Magazine*, 26 May, 1985).



**The Napier Operatic Society is delighted to welcome you all  
to another Restaurant Theatre Production**



**TABARD THEATRE  
25 NOVEMBER – 11 DECEMBER, 2004**

ESAM  CUSHING

**Bluewater**  
NAPIER Hotel

*Riverside Wines* 