

THE HASTINGS PERMANENT PICTURE CO. LTD

**Monday • July 18, 1910**

Under the Direction of

F. C. HARTSHORN, J. D. RIVERS  
AND R. SORENSON

Introducing

The Crystal Picture Co. of Permanent  
Cinematograph Entertainment



**Souvenir  
Programme**

of the  
Opening  
of the  
New

**King's Theatre**

**HASTINGS**  
H.B.

**RICHARD SORENSON,**  
Managing Director

# **BALLINGER BROS.**

## **Cash Grocery & Provision Market**

HASTINGS



Famous throughout Hawke's Bay for  
High-class Groceries and Provisions  
at reduced prices for cash.

Telephone 318.

P.O. Box 139

---

## **REBAY'S CAFE ROYAL**

Two Minutes from Theatre.

### **The Leading Supper Rooms**

Cleanliness, Civility and Attention Guaranteed  
Meals at all hours.

After the Theatre visit the Cafe Royal for supper.

Opposite Carlton Hotel

---

## **Berryman Bros.**

### **Music Warehouse**

Heretaunga Street : : Hastings

• Pianos, Organs, Edison Phonographs and  
Records, Sheet Music, including all the  
latest sixpenny pops.

### **Agents for the Dresden Piano Co.**

---

A Card]

**H. A. WILSON**

**Builder and Contractor**

KARAMU ROAD  
HASTINGS

---

A Card]

**R. FORTUNE**

**Electrician and Machinist**

HERETAUNGA ST.  
HASTINGS

---

**Change of Programme Twice Weekly at the  
Kings Theatre**

**Ring up 390**

For Fresh Fish  
Fresh Rabbits  
Etc.

Dressed Poultry  
Smoked Fish  
Etc.

**Douglas Bros. & Lane**

STATION ST.

---

**THOS. RITCHIE & CO.**

HASTINGS

Sanitary Plumbers, Gas, Hot and Cold  
Water Fitters.

Windmills and Hydraulic Ram Experts. Sole Patentees  
and Manufacturers of the Premier Economic Acetylene  
Gas Generators

**Telephones :** Office and Show Room 279  
Private Residence 341

Workshops 341  
P.O. BOX 108

---

**When Dealing with Advertisers please mention  
King's Picture Programme**

---

**JOSEPH BAXTER**

**The King's Confectionery**

SUPERVISOR

Get Lollies from the Tray Boys

---

**CADBURY'S  
CHOCOLATES**

AT

**THE KING'S**

---

**HALL & SON**

**\* BOOKSELLERS**

THE BOOKING OFFICE FOR YOUR  
RESERVES AT THE KING'S THEATRE

---

**For Spaces on Programme apply to Cliff & Co.  
Printers Karamu Road.**

---

**EATON & RASHLEIGH**

FOR

**Artistic Painting, Signwriting,**

**Decorating and Wallpapers**

'PHONE No. 356

# SOUVENIR VIEWS OF HASTINGS



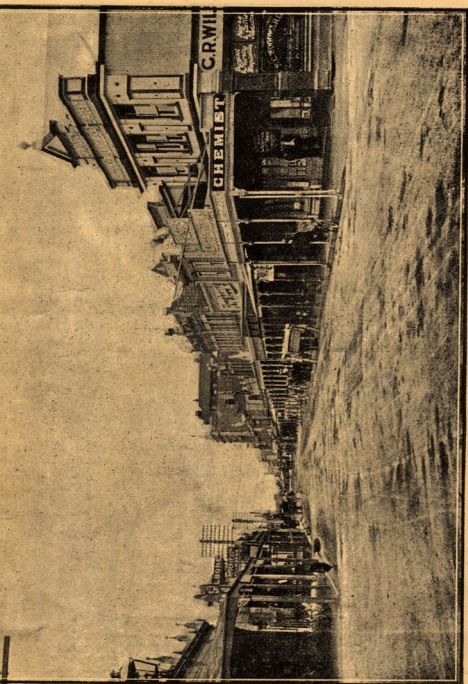
The Racecourse.



With the Compliments of the Directors  
King's Theatre and Crystal Pictures,  
Hastings.



# SOUVENIR VIEWS OF HASTINGS

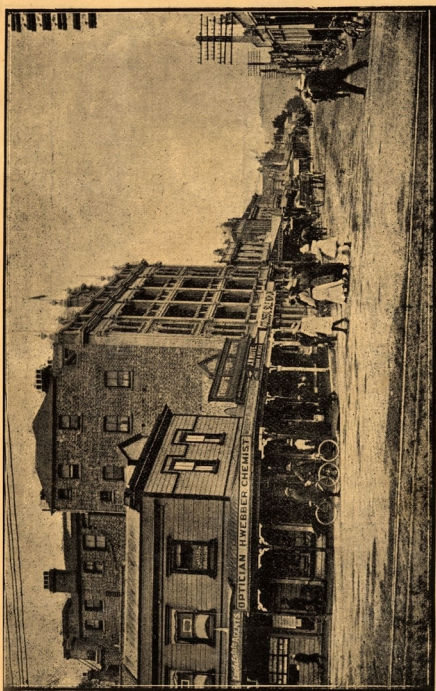


Heretaunga Street, looking West.



Write to the Manager for Souvenir  
Programme to send to your Friends

# SOUVENIR VIEWS OF HASTINGS

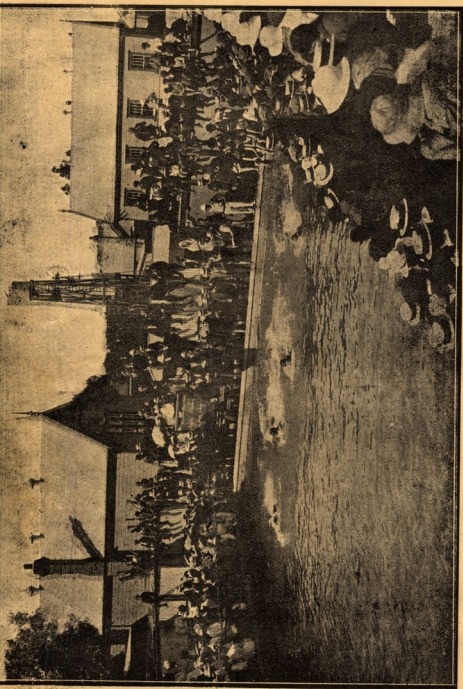


Heretaunga Street, looking East.



To commemorate the Opening of  
New King's Theatre.

SOUVENIR VIEWS OF HASTINGS



High School Swimming Bath



Crystal Permanent Pictures.  
King's Theatre,

# **The Hastings Timber, Brick & Tile Company, Ltd**

The Best JOINERY OF ALL DESCRIPTIONS

Also

TIMBER, FIREWOOD AND COAL

---

## **T. Honnor**

### **Ladies' and Gents' Tailor**

Karamu Road

---



## **C. BRIGGS**

Wholesale and Retail Manufacturer of Harness and Saddlery of every description. Horse covers, Cow covers Tarpaulins, Rick covers, tents, etc. Direct importer of English and American goods.

None but the best of labour employed.

## **C. BRIGGS**

The People's Saddler

Phone No. 9.

Karamu Road

---

## **REG. PEARCE**

For the past two years Cycle Mechanic for W. Farrelly, has now commenced business on his own account, next to Cliff & Co. and Sorenson's, Karamu Road.

Bicycles built to order. Bicycles and Prams Repaired

Also BIKE AND PRAM STAND - - THREEPENCE  
The nearest to "Picture Theatre."

---

A Card]

## **CURD & CO,**

Brick and Concrete Work Contractors

HASTINGS

---

Twice Weekly we change our Programme at the  
King's Theatre

---

## **C. H. THOMPSON**

### **Albert Stalles**

Leave your vehicles and bikes with us  
while at the King's Theatre.

## **Hawke's Bay Motor Cycle and Sports Depot**

Aeroplane Cycles from £7 10s. with all the latest improvements; will speak for themselves.

Largest stock in H.B. of Cycle Accessories, Sporting Goods, in and outdoor games of all descriptions to choose from. Call in and inspect for yourselves.

NOTE ADDRESS:

## **SACHS & JOHNSTON**

Station Street, Hastings.

---

For Everything in the FURNISHING LINE  
call or Ring Up

## **Tombs & Grubb**

**The "King's" Furnishers**

The leading House in Hawke's Bay.

All goods made at our local factory. We employ the largest and most efficient staff in the district.

Telephone No. 14

---

## **Lane Town**

Buy a Section in this desirable block before prices rise.

New Sewerage System serves every section.

New Footpaths and channelling.

To clear remaining sections we are offering at £50 and £65 each, all over quarter-acre.

**£10 Deposit Balance at 5 per cent**

Secure a valuable home site  
close to town **AT ONCE**

## **Wellwood & Wellwood**

Station Street

Hastings, H.B.

---

FOR TAILORING and GENTS' OUTFITS

## **THE "KASK"**

Heretaunga Street

Hastings

Next Webber, Chemist.

---

## **FARQUHAR & McGOLDRICK**

'Phone 258

---

## **A. A. GEORGE**

Nxt to King's Theatre  
Hastings

**For Printing**

500 Art Union Tickets at 1/-

---

## **FOSTER BROOK**

BOOKSELLER AND STATIONER

Telephone 134

HASTINGS.

Newspapers and Magazines posted or delivered to any part of the District.

BROK'S for Books

Circulating Library



AN UNKEPT Grass plot looks like a man who needs a shave; but a smooth lawn greatly improves the appearance of any dwelling. If your lawn needs a shave, a Granite State Lawn Mower will stay sharp, push easier, cut smoother, and wear longer than any other makes. Let us show you them.

**Price: 17/6 to 60/-**

**Henry Williams & Sons, Limited**

Ironmongers, Hastings

W. Robertson, Mgr

## KING'S THEATRE HASTINGS

### CRYSTAL & PICTURES

Under the direction of J. D. Rivers, F. C. Hartshorn  
and R. Sorenson.

Manager ... .. R. Sorenson

### Programme for Week ending July 20

#### PART I.

Overture [March] "Waldmere"  
The King's Special Orchestra

**Cocoanut Plantation—(Scenic)**  
Cake Walk—"Frisk Yankies" Leigh

**The Airship Destroyers—(Dramatic)**  
Prolude—"Blumenlied" Lauze

**Foolshead Receiver—(Comic)**  
Galop—"Faster and Faster" Lublitz

**Agar in Bengal—(Scenic)**  
Waltz—"Kiss of Spring" Laurendeau

**Her Terrible Ordeal—(Dramatic)**  
Romanza—"Melody in F" Rubenstein

**Afraid of Father—(Comic)**  
Two-Step—Selected

**Day Sales for Tickets at King's Confectionery**

### S. Charlton's CARLTON CLUB HOTEL

Bottling Cellars are in full swing.  
Christchurch and Dunedin Ales and Stout at Wholesale  
Prices.

**XMAS HAMPERS A SPECIALITY**  
A Trial Order Solicited

**Ring up 302 for Day Sales**

### The "PHONO"

The newest in ALARM CLOCKS.  
The most Up-to-to-morrow Alarm Clock in the market  
Stocked ONLY by

**W. F. HALL**  
**Hastings Leading Jeweller**

# Stokes for Cycles



---

INTERVAL

---

## PART II.

Overture [March]—"Home Coming Boys" Paul

The King's Special Orchestra

---

### A Midsummer Nights Dream (Shakespearian Dramatic)

Gavotte—"Stephanic" Czilulka

---

### Lieutenant Ross, R.N.—(Dramatic)

Intermezzo—"Hearts and Flowers" Fobani

---

### The Lady with the Camelias—(Dramatic)

Intermezzo—"Alicia" Betz

---

### The Gibson Goddess—(Comic)

March—"United States for Ever."

---

## The King.

---

### Orchestral Effects and Music by the King's Theatre Orchestra.

Musical Conductor ... .. E. A. SCOTT

---

**MATINEE EVERY SATURDAY AT THE KING'S**  
**Bookings at Hall & Son, Bookseller**

---

## The Albert Hotel

---

CORNER KARAMU ROAD  
Near King's Theatre.

During the Interval call on CON. O'DONOGHUE, mine  
favourite host.

C. O'DONOGHUE, Proprietor

